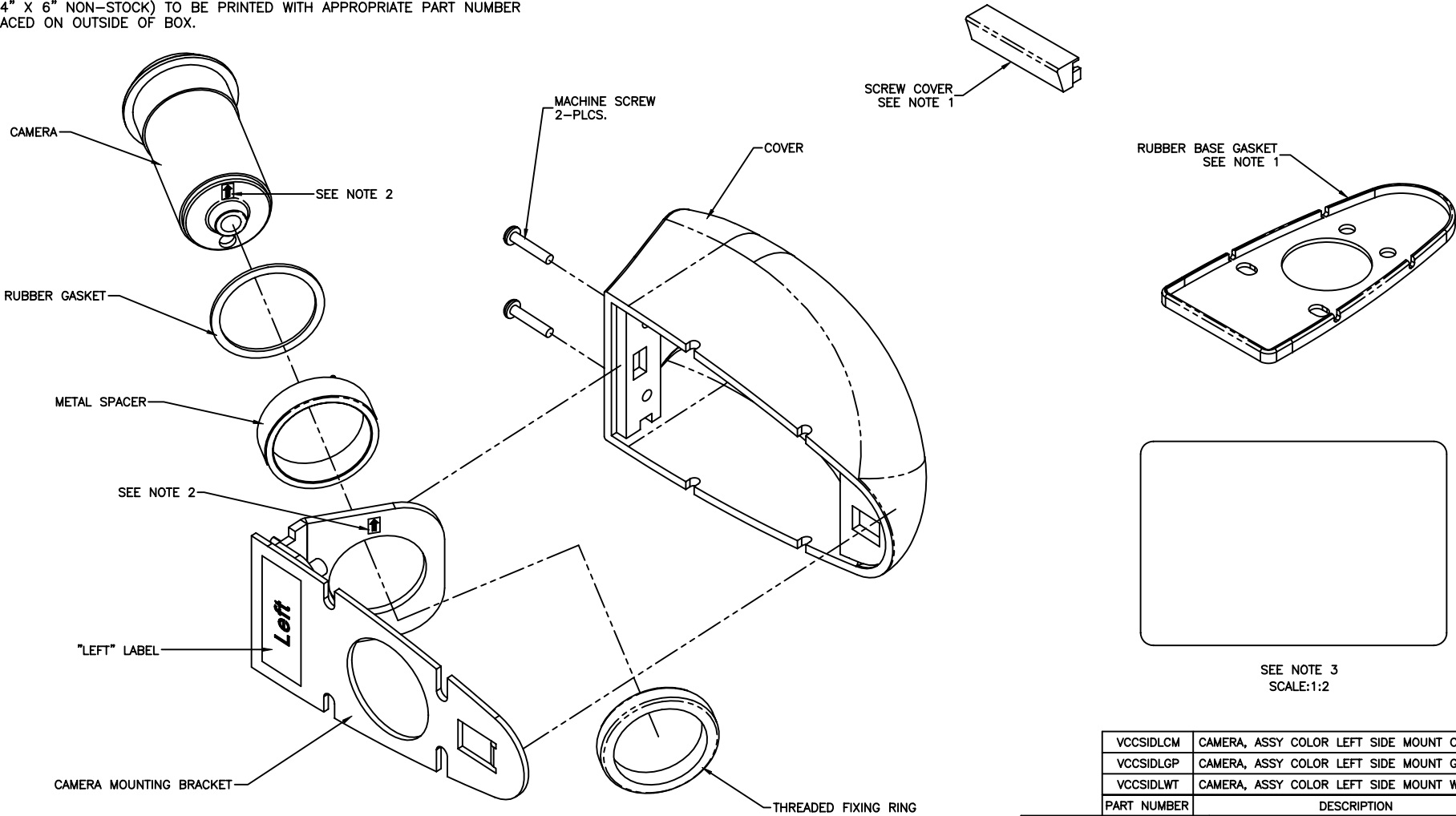


SOLID Y

- NOTES:
- 1) RUBBER BASE GASKET AND SCREW COVER TO BE PACKED IN BOX WITH ASSEMBLY
  - 2) WITH THE CAMERA MOUNTING BRACKET POSITIONED AS SHOWN THE ARROW ON THE REAR OF THE CAMERA MUST BE POINTED STRAIGHT UP MATCHING THE ARROW SHOWN ON PRINT.
  - 3) LABEL (4" X 6" NON-STOCK) TO BE PRINTED WITH APPROPRIATE PART NUMBER AND PLACED ON OUTSIDE OF BOX.

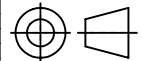
DESIGN REVISIONS			
REV	DATE	REVISION HISTORY	ECO#
A	04/15/04	ORIGINAL	.



VCCSIDLCM	CAMERA, ASSY COLOR LEFT SIDE MOUNT CHROME
VCCSIDLGP	CAMERA, ASSY COLOR LEFT SIDE MOUNT GRAY
VCCSIDLWT	CAMERA, ASSY COLOR LEFT SIDE MOUNT WHITE
PART NUMBER	DESCRIPTION

REV	DATE-BY	CHK.BY	CHANGE DESCRIPTION	EDR#
3.0	04/26/06-DH		CHANGED LABEL WAS 1324831T NOW NON-STOCK	VCCSIDL(XX)-A-3
2.0	01/14/05-JH		ADDED ASSEMBLED VIEW SHEET 2, SHEET 3 WAS SHEET 2	VCCSIDL(XX)-A-2
1.0	04/15/04-JH		REVISION A	VCCSIDL(XX)-A-1
DOCUMENT REVISIONS				

THIRD ANGLE PROJECTION



TOLERANCES (UNLESS OTHERWISE SPECIFIED)	
DECIMALS .X ±.015	DECIMALS .XX ±.005
DECIMALS .XX ±.010	ANGLES ±1°
ALL DIMENSIONS ARE IN INCHES, UNLESS OTHERWISE SPECIFIED.	
SCALE N/A	SHEET 1 OF 3
Confidential: This drawing and the information contained within are the intellectual property of ASA. This drawing may not be reproduced or distributed without the written authorization of ASA.	

PART #:	VCCSIDL(XX)	REVISION	A
DESCRIPTION: CAMERA, ASSY COLOR LEFT SIDE MOUNT			
ORIGIN DATE	04/15/04	DRAWN BY	J.HAMILTON
23319 COOPER DRIVE ELKHART, IN			
Audiovox Specialized Applications, LLC			