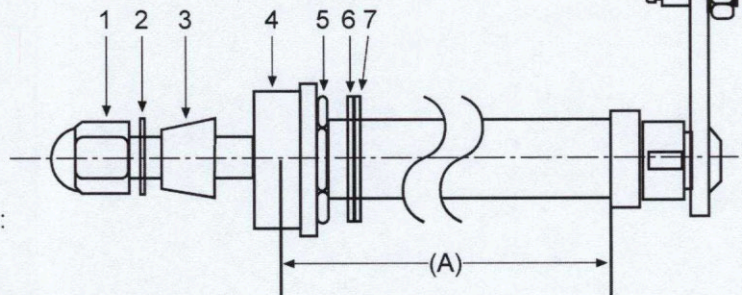
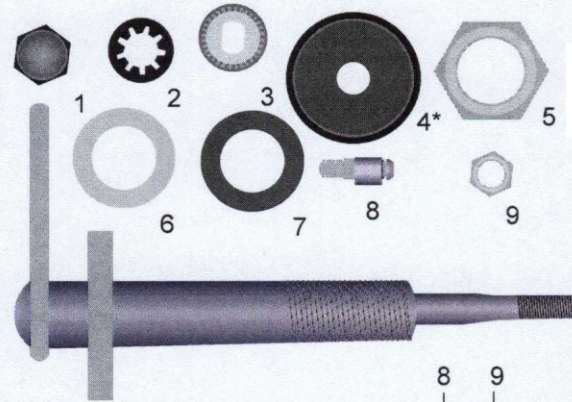


1. 407-1010 black cap nut
2. 407-1023 lockwasher
3. 407-1002 knurl
4. 407-1017 rubber cap*
5. 407-1007 nut
6. 407-1015 metal washer
7. 407-1012 rubber washer
8. 407-1005 pin
9. 414-1124 locknut

*Optional 1" (25.4)
inside height rubber
cap: #407-1072



Complete shaft assemblies:

- 304-1200 .63" (16 mm)
- 304-1201 1" (25 mm)
- 304-1202 1 1/4" (32 mm)
- 304-1203 2" (51 mm)
- 304-1204 2 1/2" (64 mm)
- 304-1205 3" (76 mm)

To identify a shaft, measure the pivot body from the base of the mounting flange to the end that protrudes to the wiper arm attachment (A). When considering a new application, this section must pass through the bulkhead and allow mounting with item #5 nut. Items #8 and #9 can be mounted as shown or inverted for different applications.