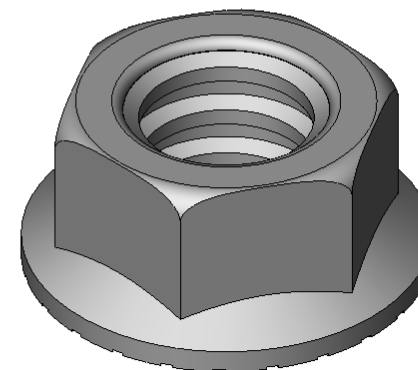
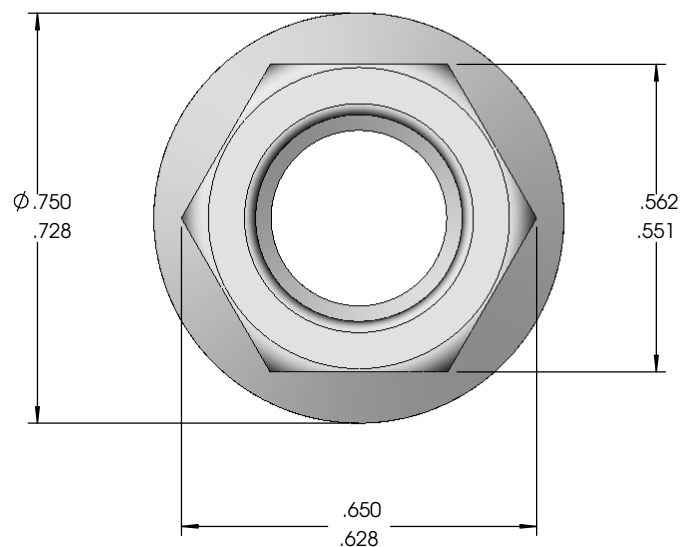
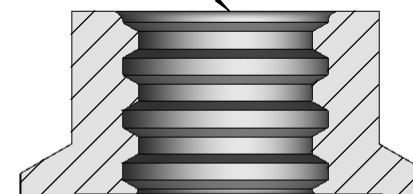


REVISIONS				
DRWN BY	REV.	DESCRIPTION	DATE	APPROVED
	A		9/13/2005	

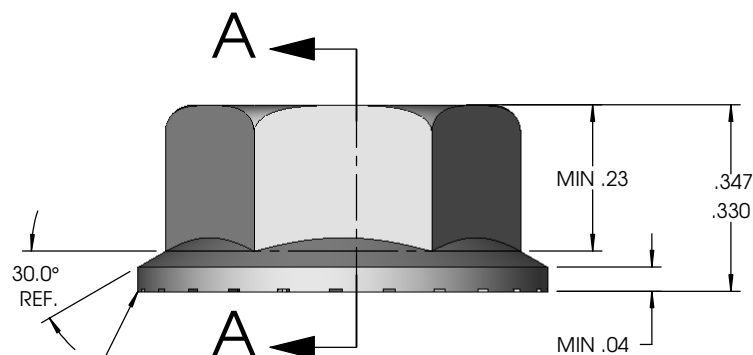
PART NO.	119072
Size:	GA NUT - 3/8 - 16; FLANGE NUT GR5 ZINC



3/8" - 16 STANDARD
THREADS



SECTION A-A
SCALE 3 : 1



SLIGHT ROUNDING
PERMISSIBLE

FASTENER



LIPPERT COMPONENTS INC.
A Division of Drew Industries

16849 County Road 38
Goshen, IN 46526
(574) 533-2180 Phone
(574) 533-2470 Fax

DIMENSIONS ARE IN INCHES
TOLERANCES:
FRACTIONAL: $\pm 1/16"$
.XX: ± 0.06
.XXX: ± 0.062
ANGLE: ± 1 DEGREE

SCALE: 2:1

PAGE: 1 OF 1

PROPRIETARY AND CONFIDENTIAL
THE INFORMATION CONTAINED IN THIS
DRAWING IS THE SOLE PROPERTY OF
LIPPERT COMPONENTS, INC. ANY
REPRODUCTION IN PART OR AS A WHOLE
WITHOUT THE WRITTEN PERMISSION OF
LIPPERT COMPONENTS, INC. IS PROHIBITED.

Customer	Due	Date	QTY.	Mat.

Mat. Type:		Blank Size:	
Mat. Grade:		DWG. NO.	119072
Mat. Class:		Customer:	LIPPERT
Gauge:		DRAWN BY:	J.Frick
Decimal:		DATE	09/13/05
Blk. Weight:		APPR. BY:	SWM
WEIGHT:	0.0197 lbs.	DATE	09/13/05
		REV.	A