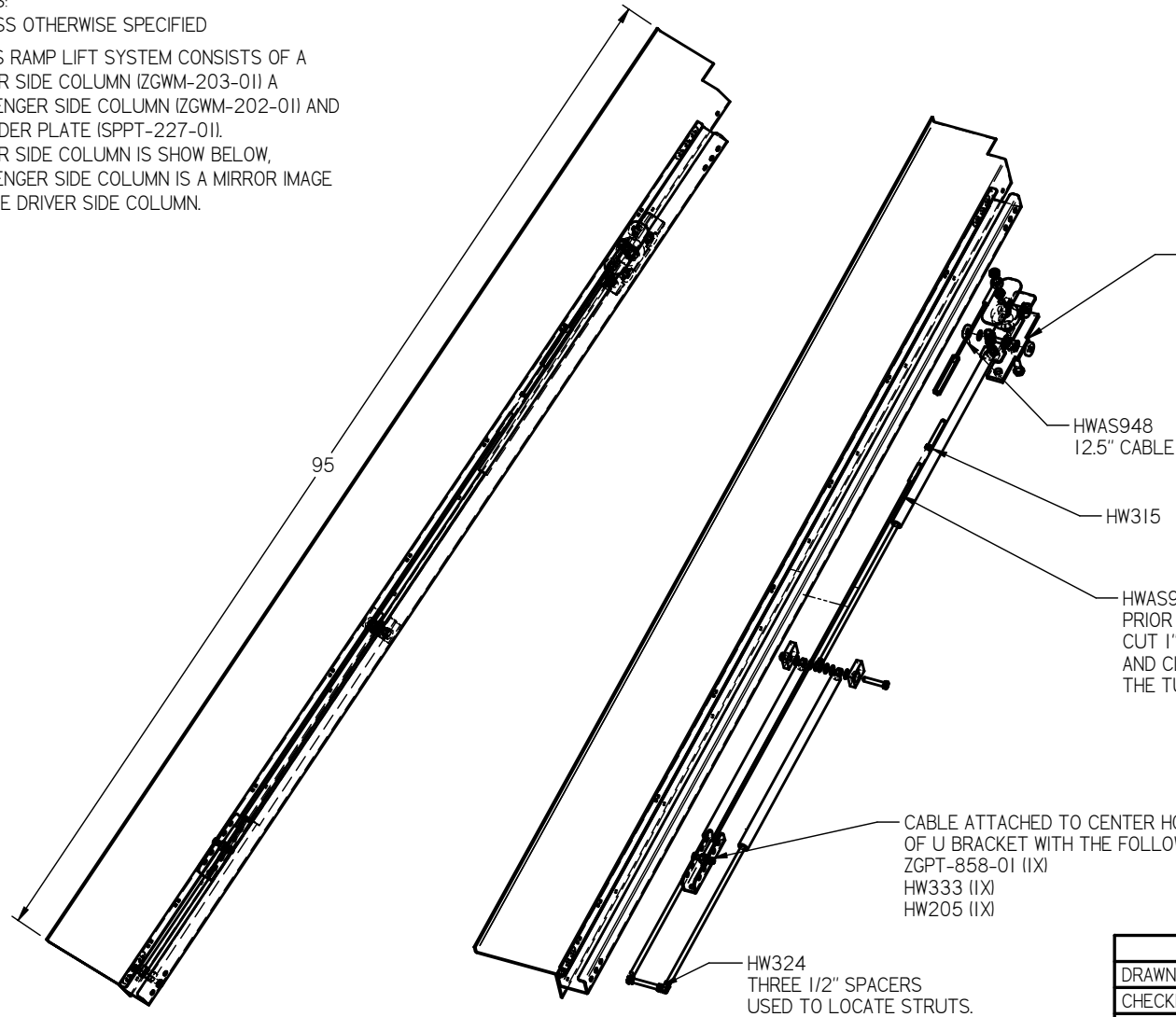


NOTES:

UNLESS OTHERWISE SPECIFIED

1) THIS RAMP LIFT SYSTEM CONSISTS OF A DRIVER SIDE COLUMN (ZGWM-203-01) A PASSENGER SIDE COLUMN (ZGWM-202-01) AND A HEADER PLATE (SPPT-227-01). DRIVER SIDE COLUMN IS SHOWN BELOW, PASSENGER SIDE COLUMN IS A MIRROR IMAGE OF THE DRIVER SIDE COLUMN.



SPECIAL STRUT PACKAGE
(1) 7859XS-980N STRUT & (E)
(2) 7861XZ-800N STRUTS

HWAS948
12.5" CABLE

HW315

HWAS939
PRIOR TO FINAL ASSEMBLY
CUT 1" OF THREAD FROM STUD
AND CLEAN THREADS SUCH THAT
THE TURN BUCKLE THREADS IN EASILY.

CABLE ATTACHED TO CENTER HOLE (B)
OF U BRACKET WITH THE FOLLOWING:
ZGPT-858-01 (1X)
HW333 (1X)
HW205 (1X)

HW324
THREE 1/2" SPACERS
USED TO LOCATE STRUTS.

REVISION HISTORY

REV	DESCRIPTION	DATE	APPROVED
B	ZGPT-858-01 WAS 95DMA, HW333 WAS HW327, REMOVED HW312	10.20.10	DLS
C	PART CHANGE HWAS948	06.29.11	DLS
D	NOTE 2	07.28.11	DLS
E	-980N WAS -1000N	08.28.11	DLS
G	SEE NOTE (TAPE CHANGE)	12.07.11	DLS
H	TROLLEY DESIGN CHANGE	04.05.12	DLS

SPECIAL NOTICE

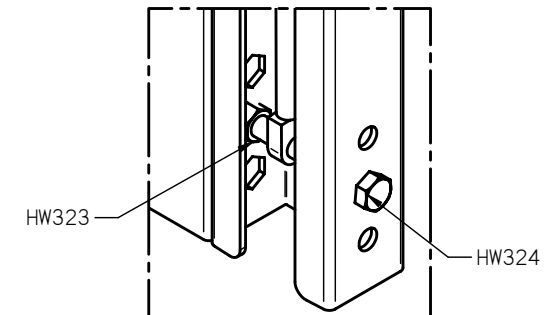
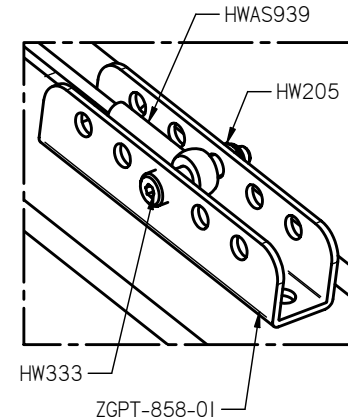
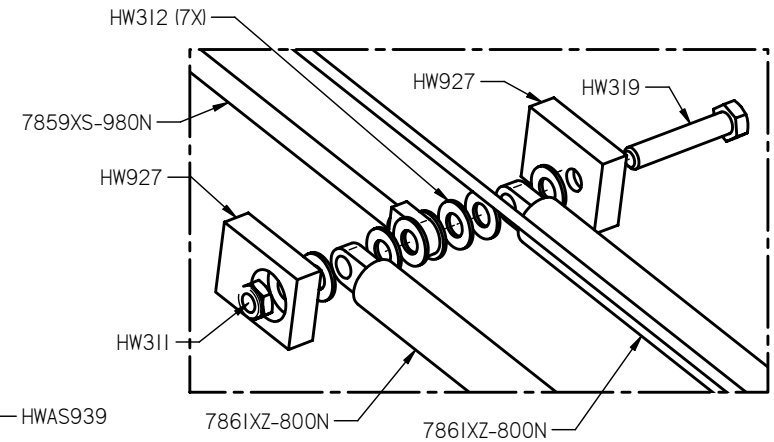
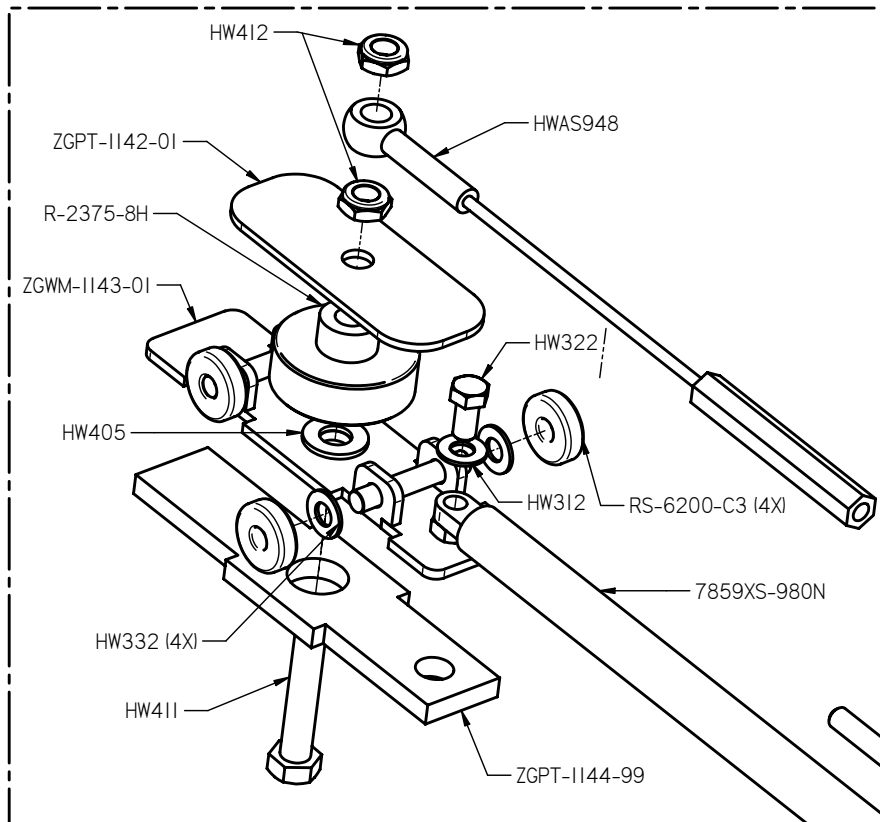
THIS DRAWING IS THE PROPERTY OF CASS HUDSON CO. IT SHALL NOT BE COPIED OR DUPLICATED IN ANY MANNER, AND SHALL NOT BE SUBMITTED TO OUTSIDE PARTIES FOR EXAMINATION WITHOUT OUR WRITTEN CONSENT. IT SHALL BE USED WITH REFERENCE TO WORK UNDER CONTRACT OR PROPOSALS SUBMITTED BY CASS HUDSON CO.

	NAME	DATE	CASS HUDSON COMPANY	
DRAWN	darrens	11/15/07		
CHECKED			COME ROLL WITH US	
ENG APPR			TITLE ZERO-G RAMP LIFT SYSTEM	
MGR APPR			NEWMAR REAR RAMP LIFT GAS	
SIZE B	DWG NO	ZGRL-90-NRRG	REV	H
FILE NAME: ZGRL90NRRG.dft				
SCALE:		WEIGHT:	SHEET 1 OF 2	

UNLESS OTHERWISE SPECIFIED
DIMENSIONS ARE IN INCHES
ANGLES $\pm 0.5^\circ$
2 PL ± 0.03 3 PL ± 0.010

NOTES:
UNLESS OTHERWISE SPECIFIED

REVISION HISTORY			
REV	DESCRIPTION	DATE	APPROVED
	SEE SHEET I		



	NAME	DATE	CASS HUDSON COMPANY	
DRAWN	darrens	11/15/07		
CHECKED			COME ROLL WITH US	
ENG APPR			TITLE ZERO-G RAMP LIFT SYSTEM	
MGR APPR			NEWMAR REAR RAMP LIFT GAS	
SIZE B	DWG NO	ZGRL-90-NRRG	REV H	
FILE NAME: ZGRL90NRRG.dft				
SCALE:		WEIGHT:	SHEET 2 OF 2	

SPECIAL NOTICE

THIS DRAWING IS THE PROPERTY OF CASS HUDSON CO. IT SHALL NOT BE COPIED OR DUPLICATED IN ANY MANNER, AND SHALL NOT BE SUBMITTED TO OUTSIDE PARTIES FOR EXAMINATION WITHOUT OUR WRITTEN CONSENT. IT SHALL BE USED WITH REFERENCE TO WORK UNDER CONTRACT OR PROPOSALS SUBMITTED BY CASS HUDSON CO.

UNLESS OTHERWISE SPECIFIED
DIMENSIONS ARE IN INCHES
ANGLES $\pm 0.5^\circ$
2 PL ± 0.03 3 PL ± 0.010