


Style		4874-68CS/CL/CR		Approved:		 Flexsteel America's Seating Specialist
Division:		Metal Division				
Season		4000 series 0000				
Unit:		RAISED FLOOR		Date Folder Created:	12 May 04 10:31 AM	
Date Modified:		09 Jan 18 08:42 AM		Issue Date:	01 Jul 04	
OA HEIGHT (UP):	33"	OA HEIGHT (RECL):	33"	REVISION 1:		
OA DEPTH (UP):	36-3/4"	OA DEPTH (RECL):	86-1/2"	REVISION 2:		
SEAT DEPTH:	23-3/4"	SEAT HEIGHT:	22"	REVISION 3:		
SEAT WIDTH:	68"	ARM HEIGHT:	24-1/2" from floor	WALL PROXIMITY:		
OA WIDTH:	80"	WEIGHT:	175 lbs			
PROTOTYPER:	RANDY	NOTES:	measurements were taken on a 2-1/2" slide	NOTE:		



35 "C": ENCAP UNIT - AIR COIL w/PUMP
 35 "I": BED UNIT W/INNERSPRING MATTRESS
 35 "D": DREAM FLEX PLUS MATTRESS

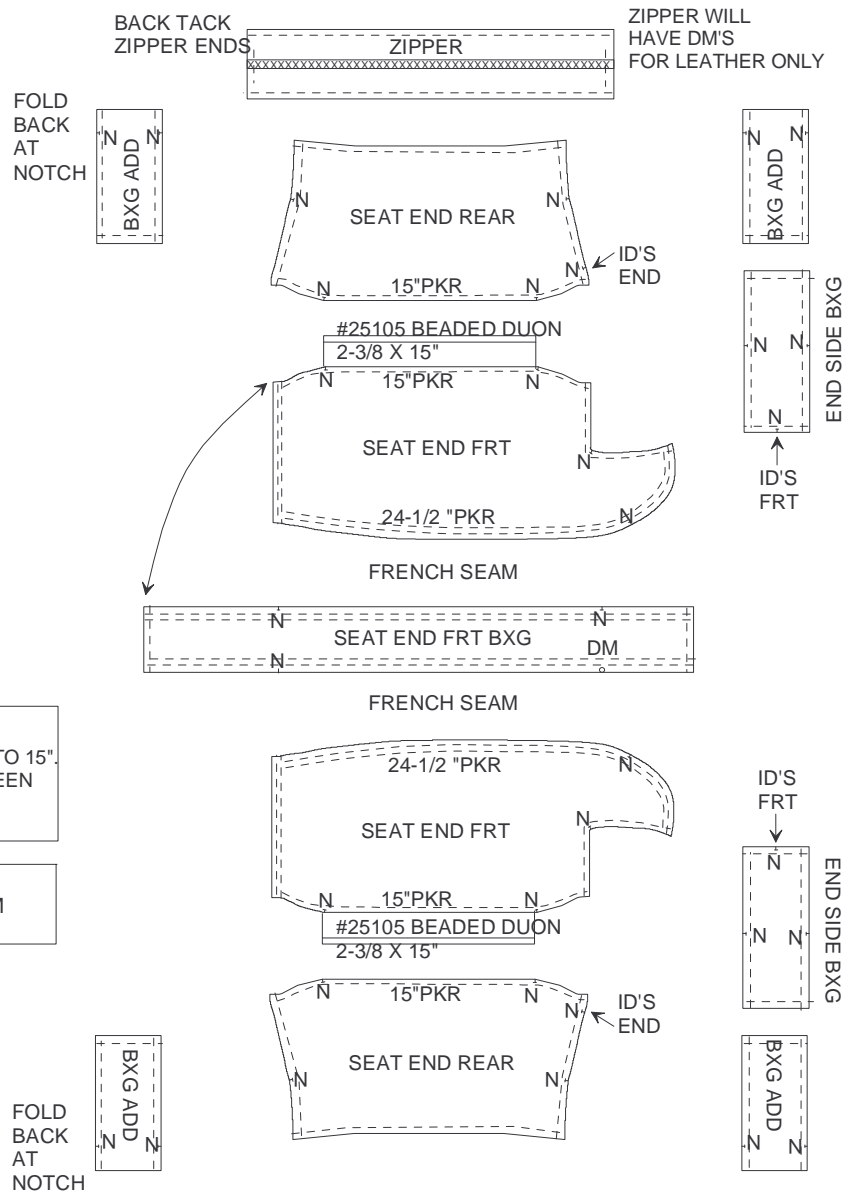
36 "-": 3722-DL/PL LEGS ATTACHED- RAISED
 36 "F": 3723-DL/PL LEGS ATTACHED - FLAT

338 "M": MINI DECK

39 "-": NO CARTON
 39 "I": 1 PER CARTON

42 "T": TUTONE

Style	4874-68CS/CL/CR	Approved:	
Division:	Metal Division		
Season	4000 series 0000		
Unit:	RAISED FLOOR	Date Folder Created:	12 May 04 10:31 AM
Date Modified:	09 Jan 18 08:42 AM	Issue Date:	01 Jul 04



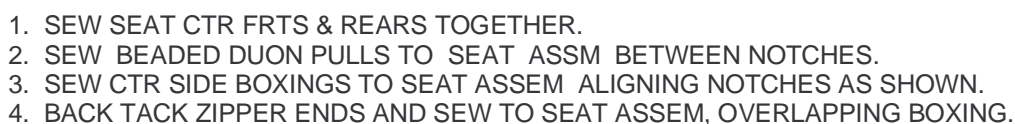
PKR SEAT END FRTS TO 24-1/2"
PUCKER REAR OF SEAT END FRT TO 15"
PUCKER SEAT REAR TO 15" BETWEEN
NOTCHES.

SEW SEAT END FRT'S TO SEAT
END FRT BX.AND FRENCH SEAM

1. SEW SEAT END REARS TO SEAT END FRT ASSEMS.
2. SEW BEADED DUON PULLS TO SEAT ASSEMBLY BETWEEN NOTCHES.
3. SEW END AND CTR SIDE BOXINGS TO SEAT ASSM ALIGNING NOTCHES AS SHOWN.
4. BACK TACK ZIPPER ENDS AND SEW TO SEAT END ASSEM, OVERLAPPING BOXING..

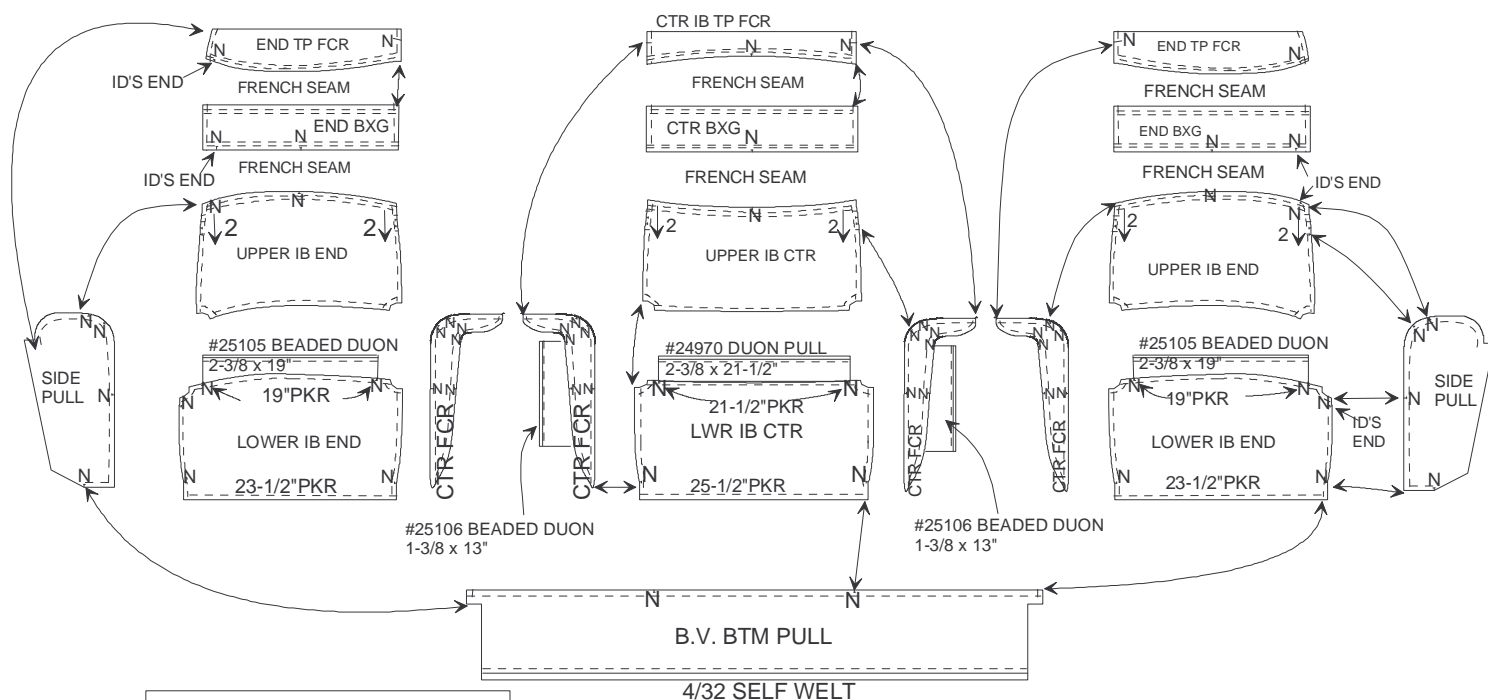
NOTE: Stitches Per Inch: Cloth = 7"-9", Leather = 5"-6"

Style	4874-68CS/CL/CR	Approved:	
Division:	Metal Division		
Season	4000 series 0000		
Unit:	RAISED FLOOR	Date Folder Created:	12 May 04 10:31 AM
Date Modified:	09 Jan 18 08:42 AM	Issue Date:	01 Jul 04



Page 3 of 25

Style	4874-68CS/CL/CR	Approved:	
Division:	Metal Division		
Season	4000 series 0000		
Unit:	RAISED FLOOR	Date Folder Created:	12 May 04 10:31 AM
Date Modified:	09 Jan 18 08:42 AM	Issue Date:	01 Jul 04



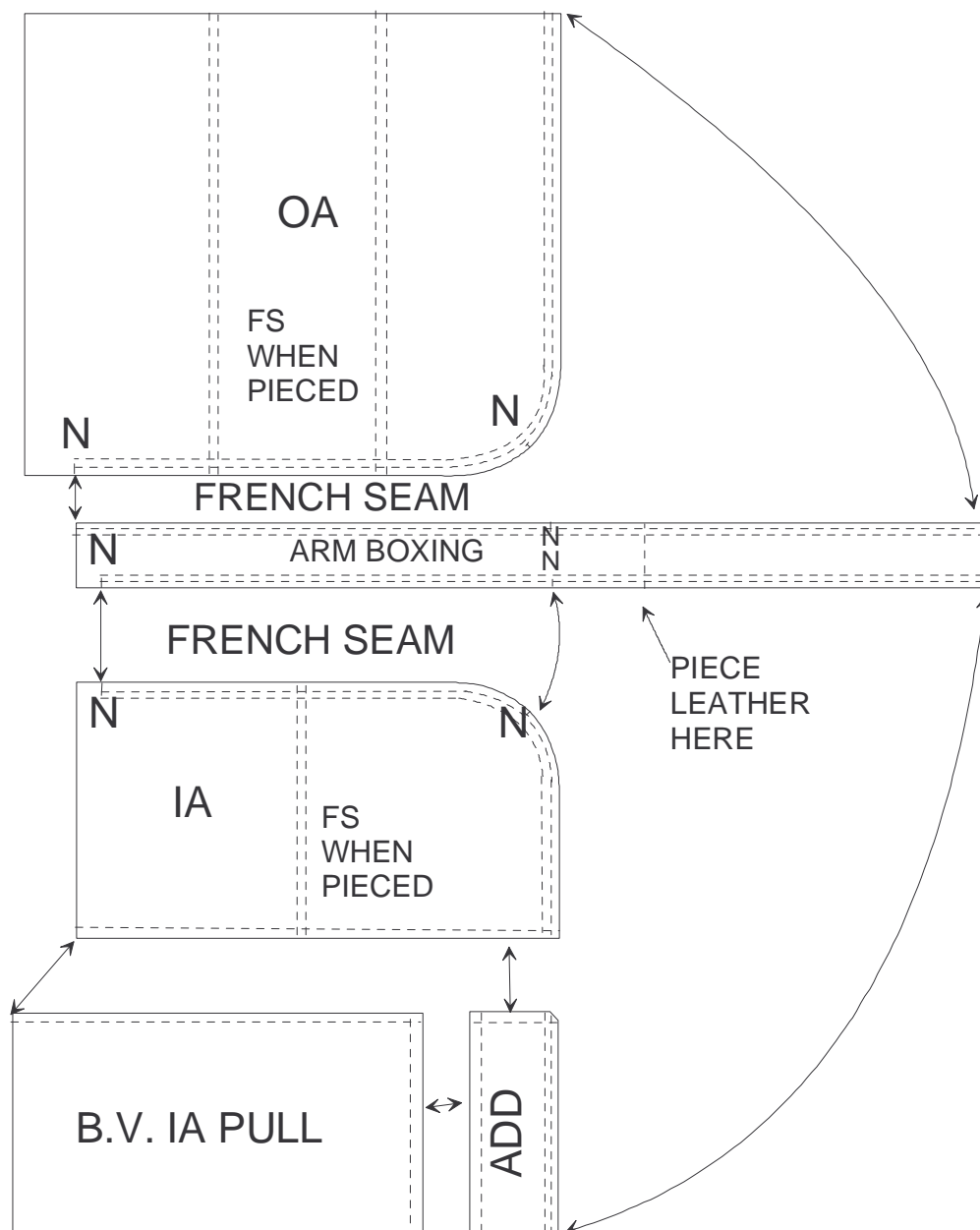
PKR LWR IB'S AS SHOWN

SEW TOP FCR'S & UPPER IB'S TO BOXINGS.
FRENCH SEAM AS SHOWN.

1. CLOSE NOTCHES IN DIRECTIONS SHOWN.
2. SEW LOWER IB'S TO UPPER IB ASSEMS.
3. SEW CTR FCRS TO IB ASSEMS. SEW IB ASSEMS TOGETHER.
4. SEW BEADED DUON PULLS TO IB ASSEMS BETWEEN NOTCHES. SEW PULLS TO CTR FCR SELVAGES.
5. SEW 4/32 SELF WELT TO BV BTM PULL. SEW PULL TO IB ASSEM.
6. SEW SIDE PULLS TO IB ASSEM.

NOTE: Stitches Per Inch: Cloth = 7"-9", Leather = 5"-6"

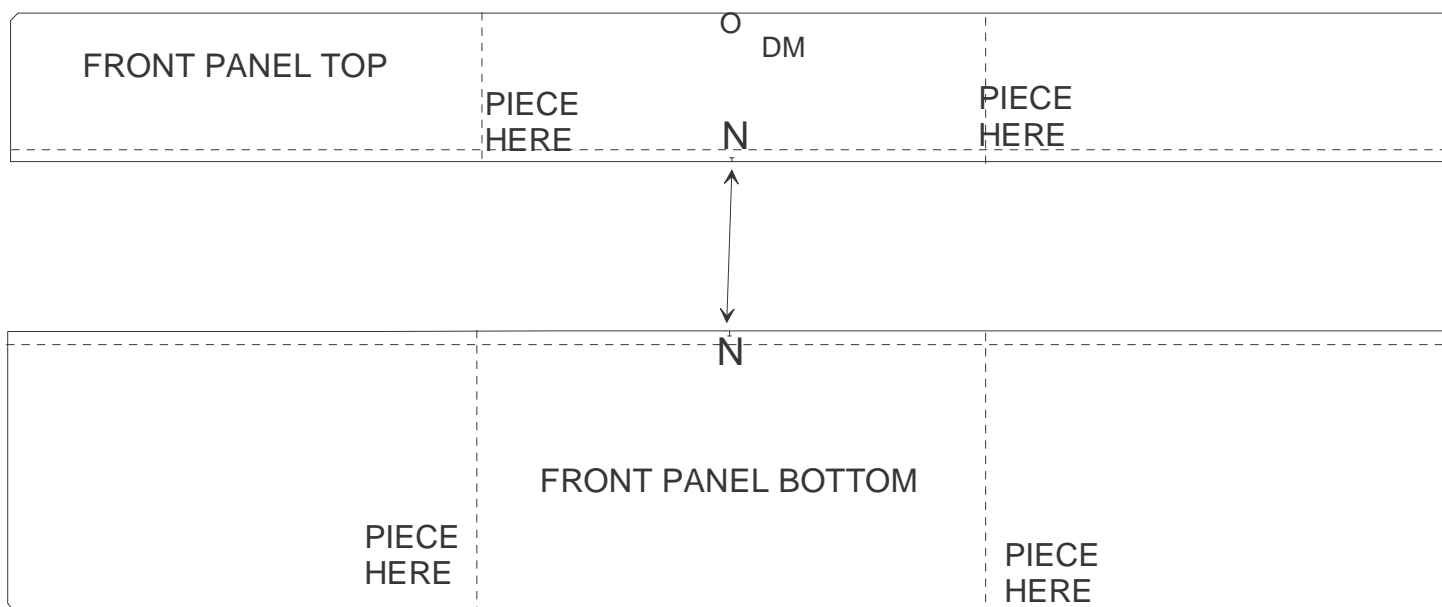
Style	4874-68CS/CL/CR	Approved:	
Division:	Metal Division		
Season	4000 series 0000		
Unit:	RAISED FLOOR	Date Folder Created:	12 May 04 10:31 AM
Date Modified:	09 Jan 18 08:42 AM	Issue Date:	01 Jul 04



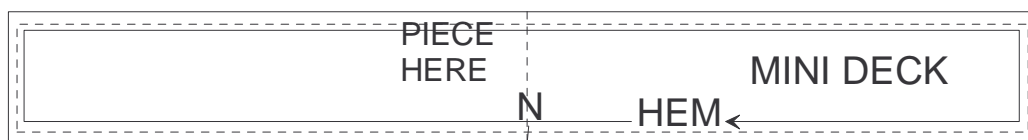
1. SEW B.V. PULL TO ADD. SEW ADD ASSEM TO IA.
2. SEW IA ASSEM & OA TO BOXING.
3. SEND ARM TO FRENCH SEAM MACHINE.
FRENCH SEAM AS SHOWN.

NOTE: Stitches Per Inch: Cloth = 7"-9", Leather = 5"-6"

Style	4874-68CS/CL/CR	Approved:	
Division:	Metal Division		
Season	4000 series 0000		
Unit:	RAISED FLOOR	Date Folder Created:	12 May 04 10:31 AM
Date Modified:	09 Jan 18 08:42 AM	Issue Date:	01 Jul 04



SEW FRONT PANEL TOP & BOTTOM TOGETHER.



HEM MINI DECK AS SHOWN

OPTION 38 "M": MINI DECK

NOTE: Stitches Per Inch: Cloth = 7"-9", Leather = 5"-6"

68CS: IN(V)/OUT(V) CLOTH CUT & SEW SHEET

Style	4874-68CS/CL/CR	Approved:	
Division:	Metal Division		
Season	4000 series 0000		
Unit:	RAISED FLOOR	Date Folder Created:	12 May 04 10:31 AM
Date Modified:	09 Jan 18 08:42 AM	Issue Date:	01 Jul 04

SEAT MISC
BEADED DUON

#25105 2-3/8" X 17" - 2 PCS (CTR 8)
 #25105 2-3/8" X 15" - 4 PCS (END 7&9)

ARM MISC

BONDTEX: 12" X 42" - 2 PCS
 BLACK VERSARE: 12-1/8" X 25-1/2" - 2 PCS (5/6)

SEAT

8PK/FS I)SEAT CTR FRONT PATTERN CUT 2
 8FS O)SEAT CTR FRONT BOXING PATT CUT 1
 8PK I)SEAT CTR REAR PATT CUT 2
 8ZP O)CTR ZIPPER PATTERN CUT 2 (DM)
 7/8/9 O)SEAT CTR SIDE BOX PATT CUT 4
 7/9 O)SEAT END SIDE BOX PATT CUT 1 PAIR
 7/9PK/FS I)SEAT END FRONT PATT CUT 2 PAIR
 7/9 FS O)SEAT END FRT BOX PATT CUT 1 PAIR (DM)
 7/9 PK I)SEAT END REAR PATT CUT 4
 7/9 ZP O)SEAT END ZIPPER PATT CUT 4 (DM)

ARM

5/6 I)INARM PATTERN CUT 1 PAIR
 5/6 O)OUTARM PATTERN CUT 1 PAIR
 5/6 I)ARM BOXING PATTERN CUT 1 PAIR
 5/6 O)INARM ADD PATTERN CUT 1 PAIR

OPTION 38 "M" MINI DECK

10 O)MINI DECK PATTERN CUT 1

IB MISC

BLACK VERSARE:

IB BTM PULL PATTERN CUT 1 (10-7/8" X 70-1/2")

BEADED DUON:

#25106 1-3/8" X 13" - 2 PCS (IB CTR FCR)
 #25105 2-3/8" X 19" - 2 PCS (IB END)
 #24970 2-3/8" X 21-1/2" - 1 PC (IB CTR)

BACK

01PK I)LOWER IB END PATTERN CUT 1 PAIR
 01FS I)UPPER IB END PATTERN CUT 1 PAIR
 01PK I)LOWER IB CTR PATTERN CUT 1
 01FS I)UPPER IB CTR PATTERN CUT 1
 01 I)IB CTR FACER PATTERN CUT 2 PAIR
 01FS O)IB CTR BOXING PATTERN CUT 1
 01FS O)CTR IB TOP FACER PATTERN CUT 1
 01FS O)END IB TOP FACER PATTERN CUT 1 PAIR
 01FS O)IB END BOXING PATTERN CUT 1 PAIR
 01 O)IB SIDE PULL PATTERN CUT 1 PAIR

FRONT PANEL

91 O)FRT PANEL TOP PATTERN CUT 1 (DM)
 91 O)FRT PANEL BTM PATTERN CUT 1

68CS: SOLID CLOTH CUT & SEW SHEET

Style	4874-68CS/CL/CR	Approved:	
Division:	Metal Division		
Season	4000 series 0000		
Unit:	RAISED FLOOR	Date Folder Created:	12 May 04 10:31 AM
Date Modified:	09 Jan 18 08:42 AM	Issue Date:	01 Jul 04

SEAT MISC
BEADED DUON

#25105 2-3/8" X 17" - 2 PCS (CTR 8)
#25105 2-3/8" X 15" - 4 PCS (END 7&9)

ARM MISC

BONDTEX: 12" X 42" - 2 PCS
BLACK VERSARE: 12-1/8" X 25-1/2" - 2 PCS (5/6)

SEAT

8PK/FS SEAT CTR FRONT PATTERN CUT 2
8FS SEAT CTR FRONT BOXING PATT CUT 1
8PK SEAT CTR REAR PATT CUT 2
8ZP CTR ZIPPER PATTERN CUT 2 (DM)
7/8/9 SEAT CTR SIDE BOX PATT CUT 4
7/9 SEAT END SIDE BOX PATT CUT 1 PAIR
7/9PK/FS SEAT END FRONT PATT CUT 2 PAIR
7/9 FS SEAT END FRT BOX PATT CUT 1 PAIR (DM)
7/9 PK SEAT END REAR PATT CUT 4
7/9 ZP SEAT END ZIPPER PATT CUT 4 (DM)

ARM

5/6 INARM PATTERN CUT 1 PAIR
5/6 OUTARM PATTERN CUT 1 PAIR
5/6 ARM BOXING PATTERN CUT 1 PAIR
5/6 INARM ADD PATTERN CUT 1 PAIR

OPTION 38 "M" MINI DECK

10 MINI DECK PATTERN CUT 1

IB MISC

BLACK VERSARE:

IB BTM PULL PATTERN CUT 1 (10-7/8" X 70-1/2")

BEADED DUON:

#25106 1-3/8" X 13" - 2 PCS (IB CTR FCR)
#25105 2-3/8" X 19" - 2 PCS (IB END)
#24970 2-3/8" X 21-1/2" - 1 PC (IB CTR)

BACK

01PK LOWER IB END PATTERN CUT 1 PAIR
01FS UPPER IB END PATTERN CUT 1 PAIR
01PK LOWER IB CTR PATTERN CUT 1
01FS UPPER IB CTR PATTERN CUT 1
01 IB CTR FACER PATTERN CUT 2 PAIR
01FS IB CTR BOXING PATTERN CUT 1
01FS CTR IB TOP FACER PATTERN CUT 1
01FS END IB TOP FACER PATTERN CUT 1 PAIR
01FS IB END BOXING PATTERN CUT 1 PAIR
01 IB SIDE PULL PATTERN CUT 1 PAIR

FRONT PANEL

91 FRT PANEL TOP PATTERN CUT 1 (DM)
91 FRT PANEL BTM PATTERN CUT 1

68CL: SOLID LEATHER CC & SEW

Style	4874-68CS/CL/CR	Approved:	
Division:	Metal Division		
Season	4000 series 0000		
Unit:	RAISED FLOOR	Date Folder Created:	12 May 04 10:31 AM
Date Modified:	09 Jan 18 08:42 AM	Issue Date:	01 Jul 04

SEAT MISC
BEADED DUON

#25105 2-3/8" X 17" - 2 PCS (CTR 8)
#25105 2-3/8" X 15" - 4 PCS (END 7&9)

ARM MISC

BONDTEX: 12" X 42" - 2 PCS
BLACK VERSARE: 12-1/8" X 25-1/2" - 2 PCS (5/6)

SEAT

8PK/FS SEAT CTR FRONT PATTERN CUT 2
8FS SEAT CTR FRONT BOXING PATT CUT 1
8PK SEAT CTR REAR PATT CUT 2
8ZP CTR ZIPPER 3-1/4" X 32-3/4" - 2 PCS
7/8/9 SEAT CTR SIDE BOX PATT CUT 4
7/9 SEAT END SIDE BOX PATT CUT 1 PAIR
7/9PK/FS SEAT END FRONT PATT CUT 2 PAIR
7/9 FS SEAT END FRT BOX PATT CUT 1 PAIR (DM)
7/9 PK SEAT END REAR PATT CUT 4
7/9 ZP SEAT END ZIPPER 3-1/4" X 30-5/8" CUT 4 (DM)

ARM

5/6 INARM FRT - PATT CUT 1 PAIR
5/6 INARM REAR - PATT CUT 1 PR
5/6 OUTARM FRT - PATT CUT 1 PR
5/6 OUTARM CTR - PATT CUT 1 PR
5/6 OUTARM REAR - PATT CUT 1 PR
5/6 ARM BOXING PATTERN CUT 1 PAIR
5/6 ARM BOXING ADD - PATT CUT 2
5/6 INARM ADD PATTERN CUT 1 PAIR

OPTION 38 "M" MINI DECK

10 MINI DECK PATTERN CUT 1 PR

IB MISC

BLACK VERSARE:

IB BTM PULL PATTERN CUT 1 (10-7/8" X 70-1/2")

BEADED DUON:

#25106 1-3/8" X 13" - 2 PCS (IB CTR FCR)
#25105 2-3/8" X 19" - 2 PCS (IB END)
#24970 2-3/8" X 21-1/2" - 1 PC (IB CTR)

BACK

01PK LOWER IB END PATTERN CUT 1 PAIR
01FS UPPER IB END PATTERN CUT 1 PAIR
01PK LOWER IB CTR PATTERN CUT 1
01FS UPPER IB CTR PATTERN CUT 1
01 IB CTR FACER PATTERN CUT 2 PAIR
01FS IB CTR BOXING PATTERN CUT 1
01FS CTR IB TOP FACER PATTERN CUT 1
01FS END IB TOP FACER PATTERN CUT 1 PAIR
01FS IB END BOXING PATTERN CUT 1 PAIR
01 IB SIDE PULL PATTERN CUT 1 PAIR

FRONT PANEL

91 FRT PANEL TOP CTR - PATT CUT 1 (DM)
91 FRT PANEL TOP END - PATT CUT 1 PR
91 FRT PANEL BTM CTR - PATT CUT 1
91 FRT PANEL BTM END - PATT CUT 1 PR

68CR: IN/OUT CLOTH CUT & SEW SHEET

Style	4874-68CS/CL/CR	Approved:	
Division:	Metal Division		
Season	4000 series 0000		
Unit:	RAISED FLOOR	Date Folder Created:	12 May 04 10:31 AM
Date Modified:	09 Jan 18 08:42 AM	Issue Date:	01 Jul 04

SEAT MISC
BEADED DUON

#25105 2-3/8" X 17" - 2 PCS (CTR 8)
#25105 2-3/8" X 15" - 4 PCS (END 7&9)

ARM MISC

BONDTEX: 12" X 42" - 2 PCS
BLACK VERSARE: 12-1/8" X 25-1/2" - 2 PCS (5/6)

SEAT

8PK/FS I)SEAT CTR FRONT PATTERN CUT 2
8FS I)SEAT CTR FRONT BOXING PATT CUT 1
8PK I)SEAT CTR REAR PATT CUT 2
8ZP I)CTR ZIPPER PATTERN CUT 2 (DM)
7/8/9 I)SEAT CTR SIDE BOX PATT CUT 4
7/9 I)SEAT END SIDE BOX PATT CUT 1 PAIR
7/9PK/FS I)SEAT END FRONT PATT CUT 2 PAIR
7/9 FS I)SEAT END FRT BOX PATT CUT 1 PAIR (DM)
7/9 PK I)SEAT END REAR PATT CUT 4
7/9 ZP I)SEAT END ZIPPER PATT CUT 4 (DM)

ARM

5/6 I)INARM PATTERN CUT 1 PAIR
5/6 O)OUTARM PATTERN CUT 1 PAIR
5/6 I)ARM BOXING PATTERN CUT 1 PAIR
5/6 I)INARM ADD PATTERN CUT 1 PAIR

OPTION 38 "M" MINI DECK

10 O)MINI DECK PATTERN CUT 1

IB MISC

BLACK VERSARE:

IB BTM PULL PATTERN CUT 1 (10-7/8" X 70-1/2")

BEADED DUON:

#25106 1-3/8" X 13" - 2 PCS (IB CTR FCR)
#25105 2-3/8" X 19" - 2 PCS (IB END)
#24970 2-3/8" X 21-1/2" - 1 PC (IB CTR)

BACK

01PK I)LOWER IB END PATTERN CUT 1 PAIR
01FS I)UPPER IB END PATTERN CUT 1 PAIR
01PK I)LOWER IB CTR PATTERN CUT 1
01FS I)UPPER IB CTR PATTERN CUT 1
01 I)IB CTR FACER PATTERN CUT 2 PAIR
01FS I)IB CTR BOXING PATTERN CUT 1
01FS I)CTR IB TOP FACER PATTERN CUT 1
01FS I)END IB TOP FACER PATTERN CUT 1 PAIR
01FS I)IB END BOXING PATTERN CUT 1 PAIR
01 I)IB SIDE PULL PATTERN CUT 1 PAIR

FRONT PANEL

91 O)FRT PANEL TOP PATTERN CUT 1 (DM)
91 O)FRT PANEL BTM PATTERN CUT 1

2nd Proto	4874-68CS/CL/CR	Flexsteel Industries, Inc.
68CL: IN:LEATHER/OUT:VINYL CC & SEW		
Style	4874-68CS/CL/CR	Approved:
Division:	Metal Division	
Season	4000 series 0000	
Unit:	RAISED FLOOR	Date Folder Created: 12 May 04 10:31 AM
Date Modified:	09 Jan 18 08:42 AM	Issue Date: 01 Jul 04

SEAT MISC
BEADED DUON
#25105 2-3/8" X 17" - 2 PCS (CTR 8)
#25105 2-3/8" X 15" - 4 PCS (END 7&9)

ARM MISC
BONDTEX: 12" X 42" - 2 PCS
BLACK VERSARE: 12-1/8" X 25-1/2" - 2 PCS (5/6)

SEAT
8PK/FS I)SEAT CTR FRONT PATTERN CUT 2
8FS O)SEAT CTR FRONT BOXING PATT CUT 1
8PK I)SEAT CTR REAR PATT CUT 2
8ZP O)CTR ZIPPER 3-1/4" X 32-3/4" - 2 PCS
7/8/9 O)SEAT CTR SIDE BOX PATT CUT 4
7/9 O)SEAT END SIDE BOX PATT CUT 1 PAIR
7/9PK/FS I)SEAT END FRONT PATT CUT 2 PAIR
7/9 FS O)SEAT END FRT BOX PATT CUT 1 PAIR (DM)
7/9 PK I)SEAT END REAR PATT CUT 4
7/9 ZP O)SEAT END ZIPPER 3-1/4" X 30-5/8" CUT 4 (DM)

ARM
5/6 I)INARM FRT - PATT CUT 1 PAIR
5/6 I)INARM REAR - PATT CUT 1 PR
5/6 O)OUTARM FRT - PATT CUT 1 PR
5/6 O)OUTARM CTR - PATT CUT 1 PR
5/6 O)OUTARM REAR - PATT CUT 1 PR
5/6 I)ARM BOXING PATTERN CUT 1 PAIR
5/6 I)ARM BOXING ADD - PATT CUT 2
5/6 O)INARM ADD PATTERN CUT 1 PAIR

OPTION 38 "M" MINI DECK
10 O)MINI DECK PATTERN CUT 1 PR

IB MISC
BLACK VERSARE:
IB BTM PULL PATTERN CUT 1 (10-7/8" X 70-1/2")
BEADED DUON:
#25106 1-3/8" X 13" - 2 PCS (IB CTR FCR)
#25105 2-3/8" X 19" - 2 PCS (IB END)
#24970 2-3/8" X 21-1/2" - 1 PC (IB CTR)

BACK
01PK I)LOWER IB END PATTERN CUT 1 PAIR
01FS I)UPPER IB END PATTERN CUT 1 PAIR
01PK I)LOWER IB CTR PATTERN CUT 1
01FS I)UPPER IB CTR PATTERN CUT 1
01 O)IB CTR FACER PATTERN CUT 2 PAIR
01FS O)IB CTR BOXING PATTERN CUT 1
01FS O)CTR IB TOP FACER PATTERN CUT 1
01FS O)END IB TOP FACER PATTERN CUT 1 PAIR
01FS O)IB END BOXING PATTERN CUT 1 PAIR
01 O)IB SIDE PULL PATTERN CUT 1 PAIR

FRONT PANEL
91 O)FRT PANEL TOP CTR - PATT CUT 1 (DM)
91 O)FRT PANEL TOP END - PATT CUT 1 PR
91 O)FRT PANEL BTM CTR - PATT CUT 1
91 O)FRT PANEL BTM END - PATT CUT 1 PR

Front Panel Upholstery Procedure

Style	4874-68CS/CL/CR	Approved:	
Division:	Metal Division		
Season	4000 series 0000		
Unit:	RAISED FLOOR	Date Folder Created:	12 May 04 10:31 AM
Date Modified:	09 Jan 18 08:42 AM	Issue Date:	01 Jul 04



FRONT PANEL:

1. Staple front panel cardboard, ends to each end of panel. Hold flush with end, center top to bottom, and let excess extend to center.

2. Center cover side to side on front of panel with seam 8" up from bottom of wood. Fold up cover and baste staple selvage.

3. Place 85" of #93659 pulp strip over selvage and secure with staples.

4. Center lower fiber (47746842) below seam and secure with staples.Wrap cover to bottom/rear and secure with staples. Make folds in cover as needed.

5. Center upper poly (48746841) above seam (excess wraps top), and secure with staples. Wrap cover to top/rear and staple. Make folds in cover as needed.

FOR 38 "M": position mini deck to top rear of panel. Selvage aligns to top edge of wood. Secure with staples.

Position 54" of #93659 pulp strip over hem and secure with staples.

SEND TO FINAL ASSEMBLY

Style	4874-68CS/CL/CR	Approved:	
Division:	Metal Division		
Season	4000 series 0000		
Unit:	RAISED FLOOR	Date Folder Created:	12 May 04 10:31 AM
Date Modified:	09 Jan 18 08:42 AM	Issue Date:	01 Jul 04



SEAT:

1. Prefill seat cushion fronts. Be sure poly is worked into place and cover is filled out. Pull pulls together and hogring (4) places each cushion.
2. Prefill seat cushion rears. Be sure poly is worked into place and cover is filled out. Close zipper at rear.

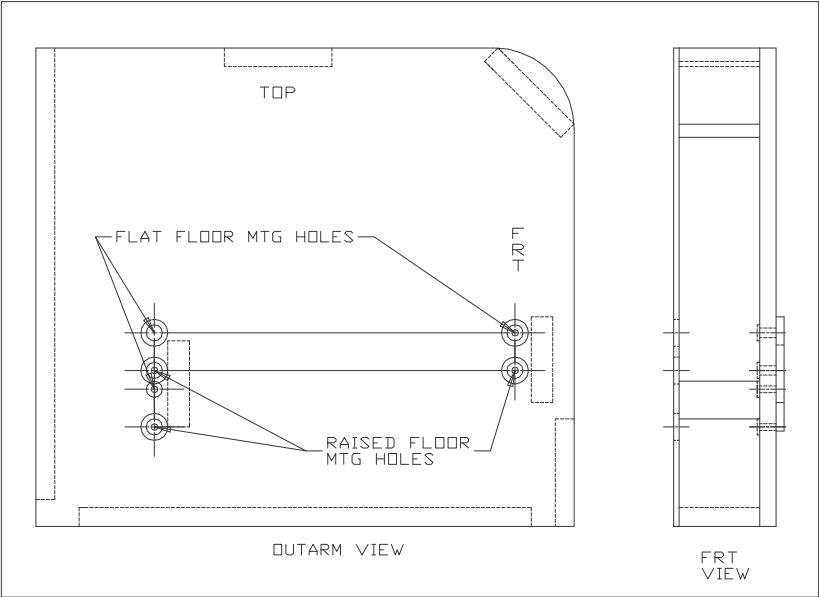
BACK:

1. Attach (1) M4874Y top rail to top rear of back frame with (4) #23877 screws at ends and evenly spaced. Center rail side to side, and hold flush with bottom edge of upper rail. Attach M4874U L/R wood frame fillers to rear of back frame using (4) #23877 screws thru pilot holes; (2) screws per filler. NOTE: cutouts in vertical rails clear brackets-cutouts to center.
2. Spray glue perimeter of back frame and back poly. Center poly side to side on frame and bond (keep poly tight to top of frame).
3. Align notch in bottom of cover with bottom of IB poly and pulls thru poly (to poly backing). Turn IB over and make (15) slits in back at pulls, (3) each slit. Place (2) #92772 13" PCTW over vertical slits. Pull and hogring pulls at slits.
4. Pull IB bottom pull to hogring rod and hogring. Be sure cover is centered. Pull IB top facers and secure with staples (to bottom of top rail).
5. Pull side pull around to rear and staple to the wood filler.

SEND TO FINAL ASSEMBLY

Arm Upholstery Procedure

Style	4874-68CS/CL/CR	Approved:	
Division:	Metal Division		
Season	4000 series 0000		
Unit:	RAISED FLOOR	Date Folder Created:	12 May 04 10:31 AM
Date Modified:	09 Jan 18 08:42 AM	Issue Date:	01 Jul 04



- MAKE IN PAIRS
- FOR 36 "-": attach (1) M0874F arm block to arm bottom front with (2) #8329 screws; hold flush to front and center side to side.
1. Staple top arm cardboard to top front and top rear of wood arm. Center side to side, and start at bottom front.
 2. Spray glue first layer of top arm poly (48746811) to top of arm wood. Center side to side, and start at bottom front.
 3. Spray glue second layer of top arm poly (48746812) to first layer of poly. Start at bottom front, and center side to side.
 4. Spray glue IA poly (48746814) to arm. Hold flush with top and front.
 5. Spray glue OA poly (48746813) to arm. Hold flush with top and front.
 6. Place bondtex over arm (center on top front corner). Work cover over top front of arm, then to rear. Align seams in cover to poly edges at top and front.
 7. Staple top rear of cover to rear of wood (to hold cover in place), then bottom front. Pull down IA cover and staple to IA wood, keeping seam straight. Cut cover at wood patches as needed. Cut away excess cover as needed. Pull IA cover to rear and staple to rear of wood. Pull down OA cover and staple to bottom of wood. Pull OA cover to rear of wood, keeping seam straight. Make folds at top rear corners. Fold rear of OA under and staple to rear inside edge of wood.
 8. Cut fabric away at (3) T-nut holes in IA.

SEND TO F INAL ASSEMBLY

CDBD =:
STR =:
IA =:
OA =:
IAFF =:
OAFF =:
BCR =:
TR =:
PNL =:
FF =:

Style	4874-68CS/CL/CR	Approved:	
Division:	Metal Division		
Season	4000 series 0000		
Unit:	RAISED FLOOR	Date Folder Created:	12 May 04 10:31 AM
Date Modified:	09 Jan 18 08:42 AM	Issue Date:	01 Jul 04

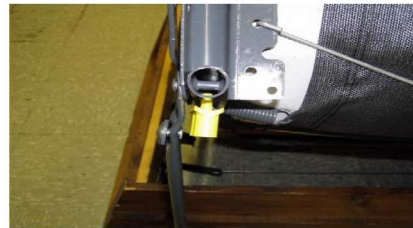


Flexsteel # 25041 Spacer Blocks Installation In A 4800 Series CS Bed W/ L & P Sleeper Unit

(One spacer block is required on each side of bed for the
L & P Air Coil sleeper installation)



1. Get styling block.



2. Insert styling block shaft into hole in
pilot section tube, as shown.



3. Tap lightly with hammer until shaft
is completely inserted into tube.



4. Styling block should be flush with
bottom of tube when finished.

FOR 35 "A": BED UNIT WITH PILLOW TOP MATTRESS
FOR 35 "C": BED UNIT WITH AIR COIL MATTRESS
FOR 35 "D": DREAM FLEX PLUS MATTRESS
FOR 35 "I": BED UNIT WITH INNERSPRING MATTRESS

1. Turn unit upside down; remove tie down wires and plastic stops (discard). Open linkage approx. 45 degrees. FOR 35 "C": install (2) #25041 styling blocks; refer to photos.
2. Place #91079 washer on #91041 screw and start into leg weld nuts; (2) places. Position leg to linkage. Guide screws into slots (keep washers to inside of linkage). Push legs to rear until screw hits rear of slot. Run (2) #23561 screws thru linkage mounting holes, and secure with #91055 keps nuts (on outside of leg). Wrench tighten all of fasteners, and repeat for other side.
3. Return unit to upright position.
4. Position 3722LC to front of RSF linkage (for 35"C", position 3722LC to rear of RSF linkage) on bed (2nd hole from bottom or bottom hole on existing HS unit) with bolt head to front (1) #23561. Position flange of 3722LC towards mattress, and position lip to front (to catch lock) and secure with (1) #91055 keps nut (to rear). Push LC tight to linkage (to right) and tighten. Place 3722LK on RSF leg studs (center below LC). Place spacer bar on studs and secure both ends with #23606 whiz nuts. Wrench tighten LSF and hand tighten RSF.
5. Position tailored back to legs, place #22514 bushings on #23732 screw, and run screws thru mounting holes (at leg top) thru back, and secure with #22506 lock nut. NOTE: keep legs to outside and be sure all screws are in place before wrench tightening.
6. Partially open bed to access front hole. Position a tailored arm to unit and run #23785 screws thru legs (with a #22514 bushing) into T-nuts in arm. Slide arm completely forward, and wrench tighten. Repeat for other arm. FOR 35 "C": open motor box and place folded instruction sheet into box, and tape closed. Wrap quicksilver around box and stretch wrap to top of a cushion. Replace cushion before packing.
7. Position tailored front panel to bracket on front of legs, and secure with (2) #22592 screws each side (thru bracket into T-nuts in panel).
8. Open unit and remove wood block, and discard.

FOR 35 "A": replace innerspring mattress with (1) #92616 pillow top mattress
FOR 35 "D": use (1) #24586 unit with (1) #25170 mattress

Dimensions:

Check bed operation, adjust lock as needed, and wrench tighten. NOTE: bed closes hard to activate lock.

SEND TO PACKING & CARTONING

Packing & Cartoning Procedure

Style	4874-68CS/CL/CR	Approved:	
Division:	Metal Division		
Season	4000 series 0000		
Unit:	RAISED FLOOR	Date Folder Created:	12 May 04 10:31 AM
Date Modified:	09 Jan 18 08:42 AM	Issue Date:	01 Jul 04



OPTION 39 "-": NO CARTON
Remove packing slip from bed. Place a poly bag over bed and close bag with masking tape. Attach shipping ticket to bag. Be sure bag is tight around bed.

OPTION 39 "1": 1 PER CARTON:
Remove packing slip from bed. Place a poly bag over bed and close bed with masking tape. Place bed in bottom cardboard, place sides and end cardboards into position. Place filler in box, then close with cardboard top. Secure both ends with banding. Attaching shipping ticket to box.

FRONT PANEL & MINI DECK Bill of Materials

Style	4874-68CS/CL/CR	Approved:	
Division:	Metal Division		
Season	4000 series 0000		
Unit:	RAISED FLOOR	Date Folder Created:	12 May 04 10:31 AM
Date Modified:	09 Jan 18 08:42 AM	Issue Date:	01 Jul 04



C/Cs = Category/Contractor Supplied; PR/LS = ProRate/Loss Factor; DC/EC = Dimension Cost/Extended Cost								None	DC	Adj Qty
C/Cs	MatCode/Season	Description	Vendor/Item#	Use	Width/Size	Qty/UOM	PR/LS	None	EC	Adj Cost
O	M0874A	FRT PNL ASMGDM PRICE	GDM	36 "F"		1	100.00%	<ALL COMBINATIONS>	0*	1
						Each	0.00%	None	0*	0*
O	48746841	FRONT PANEL UPPER POLY		attach to front panel assembly		1	100.00%	<ALL COMBINATIONS>	0*	1
						Each	0.00%	PA FOAM	0*	0*
O	47746842	FRONT PANEL LOWER FIBER		attach to front panel assembly		1	100.00%	<ALL COMBINATIONS>	0*	1
						Each	0.00%	PA FOAM	0*	0*
O	92618	CARDBOARD .08 X 35.00 X 38.00	MENASHA CORP	36 "F" - (2) #487401 .08 x 12" x 32" - ends		0	100.00%	<ALL COMBINATIONS>	0*	0
	7000 series 0000					Square Foot	0.00%	NoneNoneNone	0*	0*
O	93659	CARDBOARD STRIP .08 X .625 X 38.000	ROBERDS CONVERTING CO	across panel selvage		85	100.00%	<ALL COMBINATIONS>	0*	85
						Each	0.00%	None	0*	0*
O	M0874C	FRT PNL ASM	GDM	36 "-"		1	100.00%	<ALL COMBINATIONS>	0*	1
						Each	0.00%	None	0*	0*
O	92618	CARDBOARD .08 X 35.00 X 38.00	MENASHA CORP	36 "- (2) #487402 .08 x 12-1/2" x 32" - ends		0	100.00%	<ALL COMBINATIONS>	0*	0
	7000 series 0000					Square Foot	0.00%	NoneNoneNone	0*	0*
O	93659	CARDBOARD STRIP .08 X .625 X 38.000	ROBERDS CONVERTING CO	38 "M" mini deck		54	100.00%	<ALL COMBINATIONS>	0*	54
						Each	0.00%	None	0*	0*

Style	4874-68CS/CL/CR	Approved:	
Division:	Metal Division		
Season	4000 series 0000		
Unit:	RAISED FLOOR	Date Folder Created:	12 May 04 10:31 AM
Date Modified:	09 Jan 18 08:42 AM	Issue Date:	01 Jul 04



C/Cs = Category/Contractor Supplied; PR/LS = ProRate/Loss Factor; DC/EC = Dimension Cost/Extended Cost								None	DC	Adj Qty
C/Cs	MatCode/Season	Description	Vendor/Item#	Use	Width/Size	Qty/UOM	PR/LS	None	EC	Adj Cost
O	41191	ZIPPER CHAINZIP RITE BEIGE (500 YDS/SP)	PROGRESSIVE PRODUCTS INC	32 30 30		92	100.00%	<ALL COMBINATIONS>	0*	92
						Yards	0.00%	None	0*	0*
O	41192	ZIPPER SLIDEZIP RITE NICKEL (1M/BAG-10M CS	PROGRESSIVE PRODUCTS INC			3	100.00%	<ALL COMBINATIONS>	0*	3
						Each	0.00%	None	0*	0*
O	91142	HOG RING .75" P10M/BX BULK	KING HUGHES FASTENERS CORP			12	100.00%	<ALL COMBINATIONS>	0*	12
						Each	0.00%	None	0*	0*
O	25105	BEADED DUOND1440 60MM X 96"	GEMINI PLASTICS INC	(2) cut down to 17"; (4) cut down to 15"		7.8	100.00%	<ALL COMBINATIONS>	0*	7.8
						Linear Yard	0.00%	none	0*	0*
O	48746831	SEAT END FRONT POLY				2	100.00%	<ALL COMBINATIONS>	0*	2
						Each	0.00%	PA FOAM	0*	0*
O	48746833	SEAT CENTER FRONT POLY				1	100.00%	<ALL COMBINATIONS>	0*	1
						Each	0.00%	PA FOAM	0*	0*
O	48746835	SEAT CENTER REAR POLY				1	100.00%	<ALL COMBINATIONS>	0*	1
						Each	0.00%	PA FOAM	0*	0*
O	48746836	SEAT END REAR POLY				2	100.00%	<ALL COMBINATIONS>	0*	2
						Each	0.00%	PA FOAM	0*	0*

Style	4874-68CS/CL/CR	Approved:	
Division:	Metal Division		
Season	4000 series 0000		
Unit:	RAISED FLOOR	Date Folder Created:	12 May 04 10:31 AM
Date Modified:	09 Jan 18 08:42 AM	Issue Date:	01 Jul 04



C/Cs = Category/Contractor Supplied; PR/LS = ProRate/Loss Factor; DC/EC = Dimension Cost/Extended Cost								None	DC	Adj Qty
C/Cs	MatCode/Season	Description	Vendor/Item#	Use	Width/Size	Qty/UOM	PR/LS	None	EC	Adj Cost
O	3327BF	CNV SOFA BCK FR	FLEXSTEEL METAL DIV. MFG. PARTS JIM ROBINSON			1	100.00%	<ALL COMBINATIONS>	0*	1
						Each	0.00%	None	0*	0*
O	48746821	BACK POLY ASSEMBLY		attach to back frame		1	100.00%	<ALL COMBINATIONS>	0*	1
						Each	0.00%	PA FOAM	0*	0*
O	91142	HOG RING .75" P10M/BX BULK	KING HUGHES FASTENERS CORP	10 3 3 3 3 3		25	100.00%	<ALL COMBINATIONS>	0*	25
						Each	0.00%	None	0*	0*
O	94132	4/32" PERFLEX UFAC FOAM PLUS WELT CORD	SACKNER PRODUCTS	67 67		134	100.00%	<ALL COMBINATIONS>	0*	134
						Inches	0.00%	none	0*	0*
O	32305	55" BLACK VERSARE 2.7 OZ. (250 YDS/ROLL)	HANES CONVERTING CO	(2) 3-1/4" x 21"; (1) 3-1/4" x 23"; (2) 2" x 15"; (1) 10-7/8" x 70-1/2"; (1) 12-1/4" x 69-3/4"		0	100.00%	<ALL COMBINATIONS>	0*	0
						Yards	0.00%	None	0*	0*
O	M4874Y	TOP RAILGDM PRICE	GDM	attach to back frame		1	100.00%	<ALL COMBINATIONS>	0*	1
						Each	0.00%	none	0*	0*
O	23877	#8-18 X 1.250 PAN HD CRS RCS SDS ZINC	WHITE DISTRIBUTION & SUPPLY INC	2 2 4 - attach rear fillers & top rail		8	100.00%	<ALL COMBINATIONS>	0*	8
						Each	0.00%	None	0*	0*
O	24970	D1440 BEADED DUON 2.375" WIDE X 21.5" LONG	GEMINI PLASTICS INC			1	100.00%	<ALL COMBINATIONS>	0*	1
						Each	0.00%	None	0*	0*
O	25105	BEADED DUOND1440 60MM X 96"	GEMINI PLASTICS INC	(2) cut down to 13"		2.16	100.00%	<ALL COMBINATIONS>	0*	2.16
						Linear Yard	0.00%	none	0*	0*
O	25105	BEADED DUOND1440 60MM X 96"	GEMINI PLASTICS INC	(2) cut down to 19"		3.16	100.00%	<ALL COMBINATIONS>	0*	3.16
						Linear Yard	0.00%	none	0*	0*
O	M4874U L	LSF BF REAR FLR ASM	GDM			1	100.00%	<ALL COMBINATIONS>	0*	1
						Each	0.00%	none	0*	0*
O	M4874U R	BF REAR FLR ASM	GDM			1	100.00%	<ALL COMBINATIONS>	0*	1
						Each	0.00%	none	0*	0*

ARM Bill of Materials

Style	4874-68CS/CL/CR	Approved:	
Division:	Metal Division		
Season	4000 series 0000		
Unit:	RAISED FLOOR	Date Folder Created:	12 May 04 10:31 AM
Date Modified:	09 Jan 18 08:42 AM	Issue Date:	01 Jul 04



C/Cs = Category/Contractor Supplied; PR/LS = ProRate/Loss Factor; DC/EC = Dimension Cost/Extended Cost								None	DC	Adj Qty
C/Cs	MatCode/Season	Description	Vendor/Item#	Use	Width/Size	Qty/UOM	PR/LS	None	EC	Adj Cost
O	M4874A L	LSF WOOD ARM ASSEMBLY		[36 "-" - 01] [36 "F" - 17]		1	100.00%	<ALL COMBINATIONS>	0*	1
						Each	0.00%	none	0*	0*
O	M4874A R	RSF WOOD ARM ASSEMBLY		[36 "-" - 01] [36 "F" - 17]		1	100.00%	<ALL COMBINATIONS>	0*	1
						Each	0.00%	none	0*	0*
O	48746811	1ST LAYER TOP ARM POLY				2	100.00%	<ALL COMBINATIONS>	0*	2
						Each	0.00%	PA FOAM	0*	0*
O	48746812	2ND LAYER TOP ARM POLY				2	100.00%	<ALL COMBINATIONS>	0*	2
						Each	0.00%	PA FOAM	0*	0*
O	48746813	IA POLY				2	100.00%	<ALL COMBINATIONS>	0*	2
						Each	0.00%	PA FOAM	0*	0*
O	48746814	OA POLY				2	100.00%	<ALL COMBINATIONS>	0*	2
						Each	0.00%	PA FOAM	0*	0*
O	92618	CARDBOARD .08 X 35.00 X 38.00	MENASHA CORP	(2) #477401 .08" x 4-3/4" x 38" - top arm rear		0	100.00%	<ALL COMBINATIONS>	0*	0
	7000 series 0000					Square Foot	0.00%	None none none	0*	0*
O	92618	CARDBOARD .08 X 35.00 X 38.00	MENASHA CORP	(2) #477402 .08" x 4-3/4" x 9-3/4" - top arm front		0	100.00%	<ALL COMBINATIONS>	0*	0
	7000 series 0000					Square Foot	0.00%	None none none	0*	0*
O	94071	42" WHITE DELTA 1000 (BONDTEX) 500 YD/ROLL	HANES CONVERTING CO	(2) 12" x 42"		0	100.00%	<ALL COMBINATIONS>	0*	0
						Yards	0.00%	None	0*	0*
O	32305	55" BLACK VERSARE 2.7 OZ. (250 YDS/ROLL)	HANES CONVERTING CO	(2) 12-1/8" x 25-1/2"		0	100.00%	<ALL COMBINATIONS>	0*	0
						Yards	0.00%	None	0*	0*
O	M0874F	ARM BLOCKGDM PRICE	GDM	[36 "-" - 01] attach to arm, bottom front		2	100.00%	<ALL COMBINATIONS>	0*	2
						Each	0.00%	none	0*	0*
O	8329	10-10X2-1/2PHFLHD STL TYPE17 STRBD SCR PHOS&O	BRICO IND INC	[36 "-" - 01] 2 2 - attach wood fillers		4	100.00%	<ALL COMBINATIONS>	0*	4
						Each	0.00%	None	0*	0*

FINAL ASSEMBLY Bill of Materials

Style	4874-68CS/CL/CR	Approved:	
Division:	Metal Division		
Season	4000 series 0000		
Unit:	RAISED FLOOR	Date Folder Created:	12 May 04 10:31 AM
Date Modified:	09 Jan 18 08:42 AM	Issue Date:	01 Jul 04



C/Cs = Category/Contractor Supplied; PR/LS = ProRate/Loss Factor; DC/EC = Dimension Cost/Extended Cost								None	DC	Adj Qty
C/Cs	MatCode/Season	Description	Vendor/Item#	Use	Width/Size	Qty/UOM	PR/LS	None	EC	Adj Cost
O	3722DL	CS DRVR LEG RF	FLEXSTEEL METAL DIV. MFG. PARTS JIM ROBINSON	36 "-"		1	100.00%	<ALL COMBINATIONS>	0*	1
						Each	0.00%	None	0*	0*
O	3722PL	CS PSGR LEG RF	FLEXSTEEL METAL DIV. MFG. PARTS JIM ROBINSON	36 "-"		1	100.00%	<ALL COMBINATIONS>	0*	1
						Each	0.00%	None	0*	0*
O	3327SP	CNV SOFA SP BAR	FLEXSTEEL METAL DIV. MFG. PARTS JIM ROBINSON			1	100.00%	<ALL COMBINATIONS>	0*	1
						Each	0.00%	None	0*	0*
O	3722LC	CS LOCK CATCH	FLEXSTEEL METAL DIV. MFG. PARTS JIM ROBINSON			1	100.00%	<ALL COMBINATIONS>	0*	1
						Each	0.00%	None	0*	0*
O	3722LK	CS LOCK	FLEXSTEEL METAL DIV. MFG. PARTS JIM ROBINSON			1	100.00%	<ALL COMBINATIONS>	0*	1
						Each	0.00%	None	0*	0*
O	22592	HEX HEAD BOLT5/16-18UNC-2A X .625 GR5 ZINC	WHITE DISTRIBUTION & SUPPLY INC	attach front panel		4	100.00%	<ALL COMBINATIONS>	0*	4
						Each	0.00%	None	0*	0*
O	23785	SCREW, HEX HEAD SEE PRINT	WHITE DISTRIBUTION & SUPPLY INC	attach arms		6	100.00%	<ALL COMBINATIONS>	0*	6
						Each	0.00%	None	0*	0*
O	23561	HEX HEAD SCREW.250-20UNC-2B X .750 GR5 ZINC	WHITE DISTRIBUTION & SUPPLY INC	attach legs to linkage		2	100.00%	<ALL COMBINATIONS>	0*	2
						Each	0.00%	None	0*	0*
O	91079	FLAT STL WASHER - PLAIN	WHITE DISTRIBUTION & SUPPLY INC	attach legs to linkage		4	100.00%	<ALL COMBINATIONS>	0*	4
						Each	0.00%	None	0*	0*
O	91055	HEX KEPS ZINC.250-20UNC-2B	WHITE DISTRIBUTION & SUPPLY INC	lock & linkage to legs		3	100.00%	<ALL COMBINATIONS>	0*	3
						Each	0.00%	None	0*	0*

FINAL ASSEMBLY Bill of Materials

Style	4874-68CS/CL/CR	Approved:	
Division:	Metal Division		
Season	4000 series 0000		
Unit:	RAISED FLOOR	Date Folder Created:	12 May 04 10:31 AM
Date Modified:	09 Jan 18 08:42 AM	Issue Date:	01 Jul 04



C/Cs = Category/Contractor Supplied; PR/LS = ProRate/Loss Factor; DC/EC = Dimension Cost/Extended Cost								None	DC	Adj Qty
C/Cs	MatCode/Season	Description	Vendor/Item#	Use	Width/Size	Qty/UOM	PR/LS	None	EC	Adj Cost
O	91041	SCREW, HEX HD GR 5 ZINC .250-20UNC-2A X .500	WHITE DISTRIBUTION & SUPPLY INC	lock & linkage to legs		5	100.00%	<ALL COMBINATIONS>	0*	5
						Each	0.00%	None	0*	0*
O	23606	NUT, HEX FLANGE WHIZ-LOCK SEE PRINT	WHITE DISTRIBUTION & SUPPLY INC	front spacer		4	100.00%	<ALL COMBINATIONS>	0*	4
						Each	0.00%	None	0*	0*
O	23732	SCREW, HEX HEAD.375-16UNC-ZA X 1.750 GR5 PLN	WHITE DISTRIBUTION & SUPPLY INC	attach back		4	100.00%	<ALL COMBINATIONS>	0*	4
						Each	0.00%	None	0*	0*
O	22514	WASHER, FLT, PL.474 ID X .942 OD X .060	WHITE DISTRIBUTION & SUPPLY INC	(4) attach back; (6) attach arms		10	100.00%	<ALL COMBINATIONS>	0*	10
						Each	0.00%	None	0*	0*
O	22506	NUT, HEX LOCKSEE PRINT	WHITE DISTRIBUTION & SUPPLY INC			4	100.00%	<ALL COMBINATIONS>	0*	4
						Each	0.00%	None	0*	0*
O	24257	68" RV CONVRT SOFA BED UNIT S/DREAMFLEX MTTRS	HICKORY SPRINGS-PLATTVILLE	35 "I"		1	100.00%	<ALL COMBINATIONS>	0*	1
						Each	0.00%	None	0*	0*
O	24747	ENCAPSULATED AIR COIL MATTRESS QUEEN 170952	LEGGETT & PLATT/SLEEPER BRANCH 341	35 "C"		1	100.00%	<ALL COMBINATIONS>	0*	1
						Each	0.00%	None	0*	0*
O	24748	AIR COIL PRODUCTION MOTOR 600799	NO-SAG KENDALLVILLE	35 "C"		1	100.00%	<ALL COMBINATIONS>	0*	1
						Each	0.00%	None	0*	0*
O	8230	9" QUICKSILVER12" PERFORATED EVERY 9"	CAROLINA TAPE & SUPPLY CO	35 "C"		2	100.00%	<ALL COMBINATIONS>	0*	2
						ROLL	0.00%	None	0*	0*
O	484	INSTRUCTION SHT FOR AIR COIL MATT	NO-SAG KENDALLVILLE	35 "C" - place in motor box		1	100.00%	<ALL COMBINATIONS>	0*	1
						Each	0.00%	None	0*	0*
O	25041	PLASTIC,STYLING BLOCK 1.250X1.500X.790	LEGGETT & PLATT/SLEEPER BRANCH 341	35 "C"		2	100.00%	<ALL COMBINATIONS>	0*	2
						Each	0.00%	None	0*	0*
O	42366	3.5" WEBBING(250 YDS/ROLL)	JSI CORPORATION	24 24 - secure CS unit	webbing	48	100.00%	<ALL COMBINATIONS>	0*	48
						Yards	0.00%	None	0*	0*

FINAL ASSEMBLY Bill of Materials

Style	4874-68CS/CL/CR	Approved:	
Division:	Metal Division		
Season	4000 series 0000		
Unit:	RAISED FLOOR	Date Folder Created:	12 May 04 10:31 AM
Date Modified:	09 Jan 18 08:42 AM	Issue Date:	01 Jul 04



C/Cs = Category/Contractor Supplied; PR/LS = ProRate/Loss Factor; DC/EC = Dimension Cost/Extended Cost								None	DC	Adj Qty
C/Cs	MatCode/Season	Description	Vendor/Item#	Use	Width/Size	Qty/UOM	PR/LS	None	EC	Adj Cost
O	24586	CS MATT UNITUPH #44202	HICKORY SPRINGS-PLATTVILLE	35 "D"		1	100.00%	<ALL COMBINATIONS>	0*	1
						Each	0.00%	None	0*	0*
O	25170	DREAM FLEX PLUS QUEEN 59.50 X 71.50	RESTONIC--METAL DIVISION	35 "D"		1	100.00%	<ALL COMBINATIONS>	0*	1
						Each	0.00%	None	0*	0*
O	3723DL	CS DRVR LEG FF	FLEXSTEEL METAL DIV. MFG. PARTS JIM ROBINSON	36 "F"		1	100.00%	<ALL COMBINATIONS>	0*	1
						Each	0.00%	None	0*	0*
O	3723PL	CS PSGR LEG FF	FLEXSTEEL METAL DIV. MFG. PARTS JIM ROBINSON	36 "F"		1	100.00%	<ALL COMBINATIONS>	0*	1
						Each	0.00%	None	0*	0*
O	92616	QUEEN SZ MATTPILLOW TOP MVS 60 X 72 X 7	RESTONIC--METAL DIVISION	35 "A"		1	100.00%	<ALL COMBINATIONS>	0*	1
						Each	0.00%	None	0*	0*

PACKING & CARTONING Bill of Materials

Style	4874-68CS/CL/CR	Approved:	
Division:	Metal Division		
Season	4000 series 0000		
Unit:	RAISED FLOOR	Date Folder Created:	12 May 04 10:31 AM
Date Modified:	09 Jan 18 08:42 AM	Issue Date:	01 Jul 04



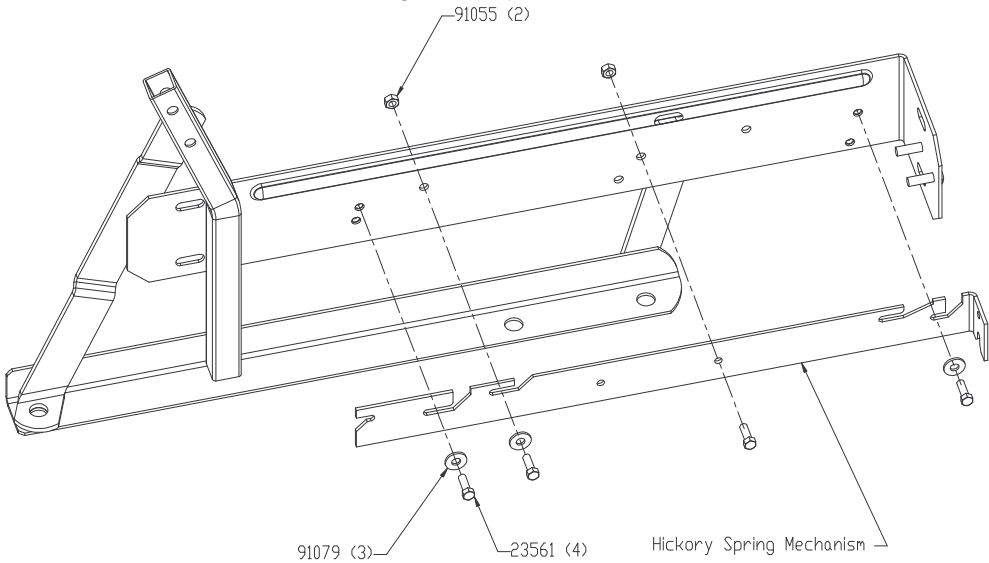
C/Cs = Category/Contractor Supplied; PR/LS = ProRate/Loss Factor; DC/EC = Dimension Cost/Extended Cost

								None	DC	Adj Qty
C/Cs	MatCode/Season	Description	Vendor/Item#	Use	Width/Size	Qty/UOM	PR/LS	SO	EC	Adj Cost
F	*	*		assembled bed		1	100.00%	<ALL COMBINATIONS>	0*	1
						Each	0.00%	(invalid detail 41162)	0*	0*
O	93513	POLY BAG124 X 54 CF 2-MIL	WHITE DISTRIBUTION & SUPPLY INC	39 "-" or "1"		1	100.00%	<ALL COMBINATIONS>	0*	1
						Each	0.00%	None	0*	0*
F	*	*		masking tape - as required		0	100.00%	<ALL COMBINATIONS>	0*	0
						Each	0.00%	(invalid detail 41162)	0*	0*
O	4002	PLASTIC STRAP#SP718 BLACK	WW GRAINGER INC	39 "1" (2) 12.7 each end		25.4	100.00%	<ALL COMBINATIONS>	0*	25.4
						Feet	0.00%	None	0*	0*
O	23078	CARDBOARD TOP 51.375X100.375 SC & SLOT 200BC	KAPSTONE CONTAINCER CORP	39 "1"		2	100.00%	<ALL COMBINATIONS>	0*	2
						Each	0.00%	None	0*	0*
O	23076	CARDBOARD END 44X50 SC & SLOT 200 BC	KAPSTONE CONTAINCER CORP	39 "1"		2	100.00%	<ALL COMBINATIONS>	0*	2
						Each	0.00%	None	0*	0*
O	23077	CARDBOARD SIDE44X99.75 SC & SLOT 200BC	KAPSTONE CONTAINCER CORP	39 "1"		2	100.00%	<ALL COMBINATIONS>	0*	2
						Each	0.00%	None	0*	0*
O	23079	CARDBOARD FILLER 45X47.50 SC & SLOT 200 BC	COLOR BOX	39 "1"		1	100.00%	<ALL COMBINATIONS>	0*	1
						Each	0.00%	None	0*	0*

Style	4874-68CS/CL/CR	Approved:	
Division:	Metal Division		
Season	4000 series 0000		
Unit:	RAISED FLOOR	Date Folder Created:	12 May 04 10:31 AM
Date Modified:	09 Jan 18 08:42 AM	Issue Date:	01 Jul 04



4800 Series CS Bed
W/ Flexsteel #24256 (60) & #24257 (68)
Hickory Sleeper units



CAD# 3722Spec.dwg

4800 Series CS Bed
W/ Flexsteel #24746 (60) & #24747 (68)
L & P Air Coil Sleeper units
(Seat spacer blocks as shown on Page 3 must be used for this mounting)

