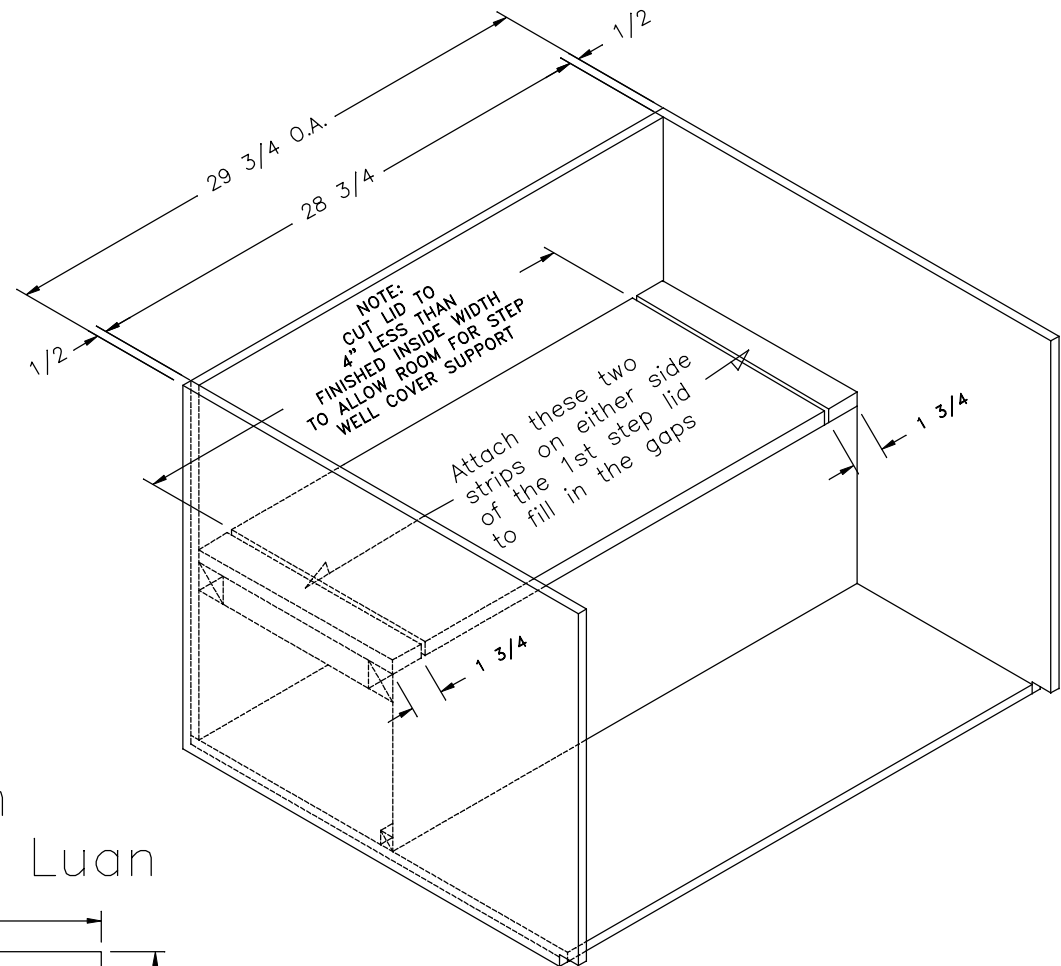
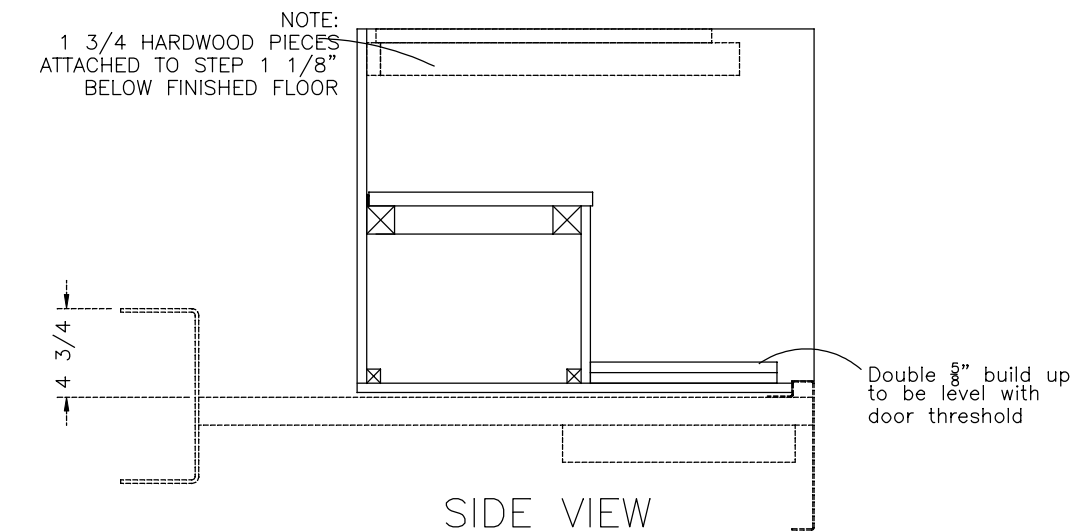
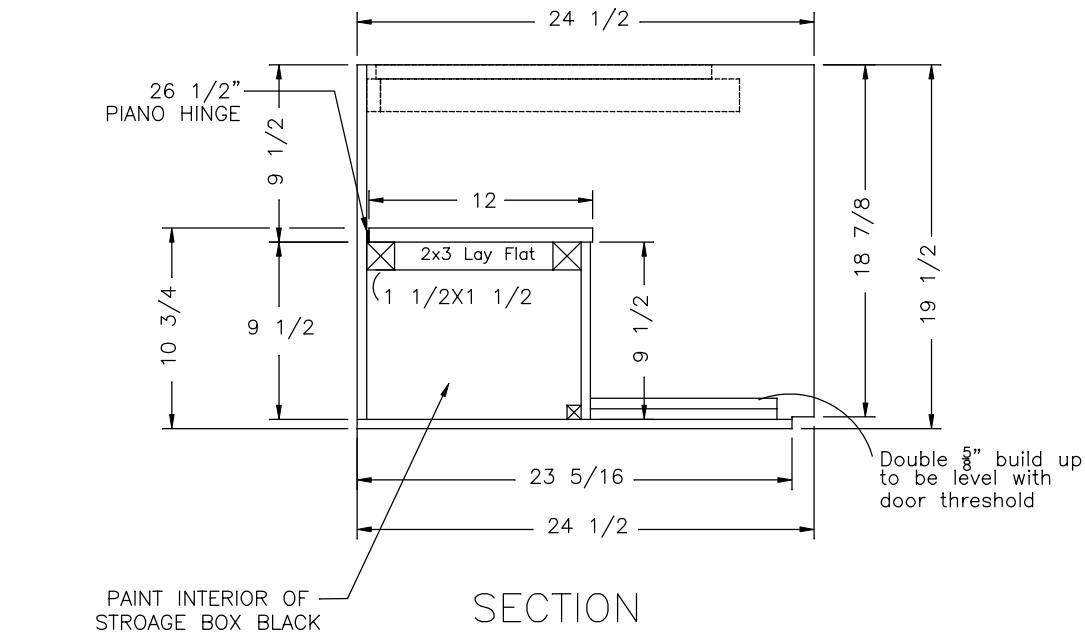
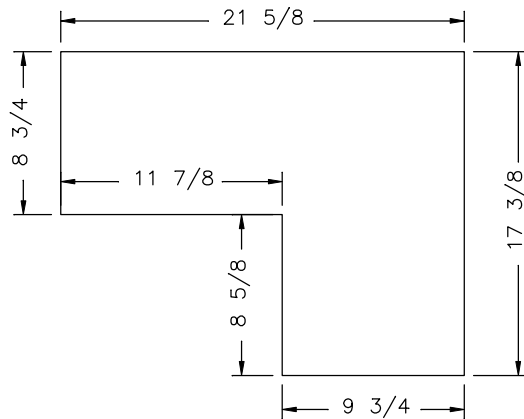


ITEM #	QTY	NEWMAR #	DESCRIPTION
1	1	70060	26 1/2 PIANO HINGE
2	1	139978	17" HINGE
3	1	140198	CATCH DOUBLE BALL BRASS



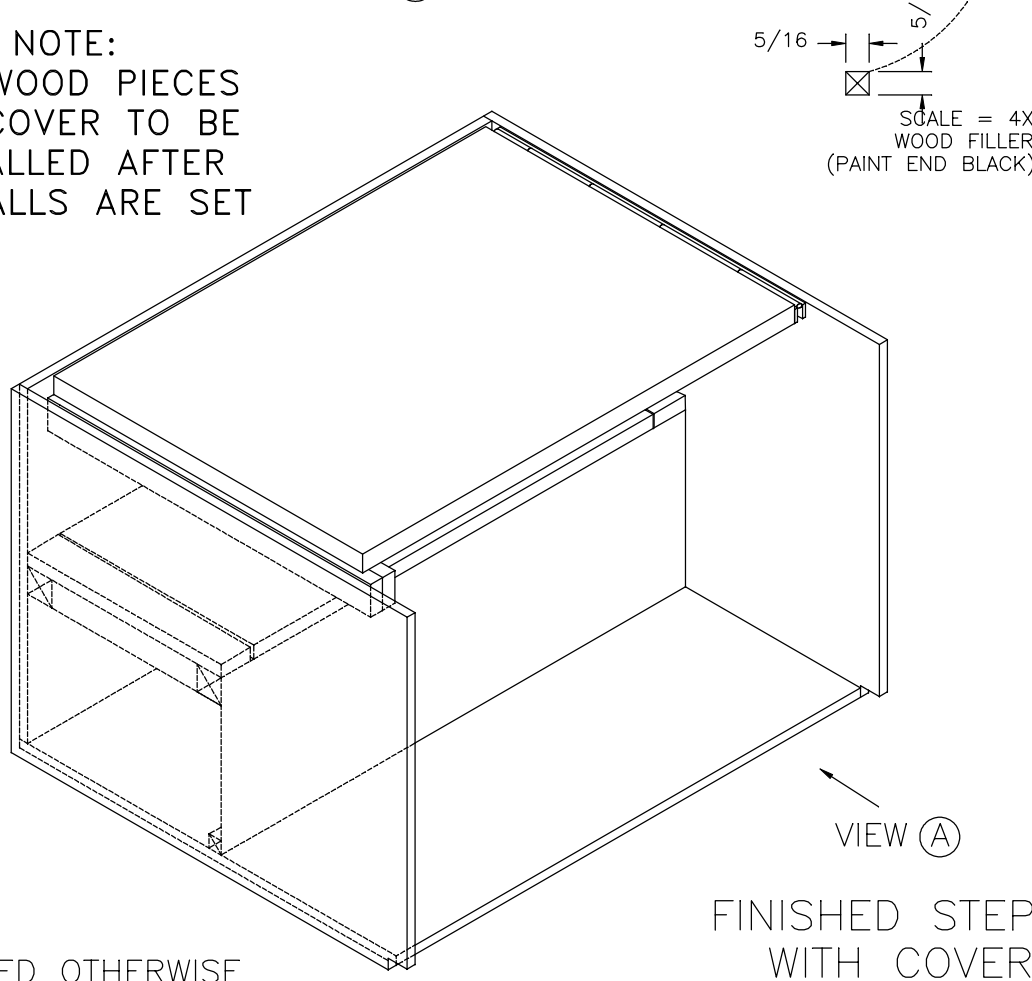
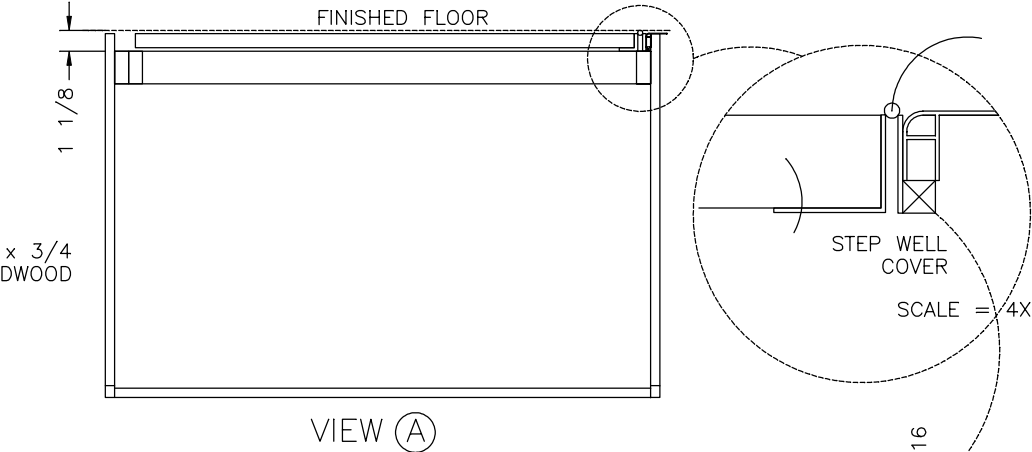
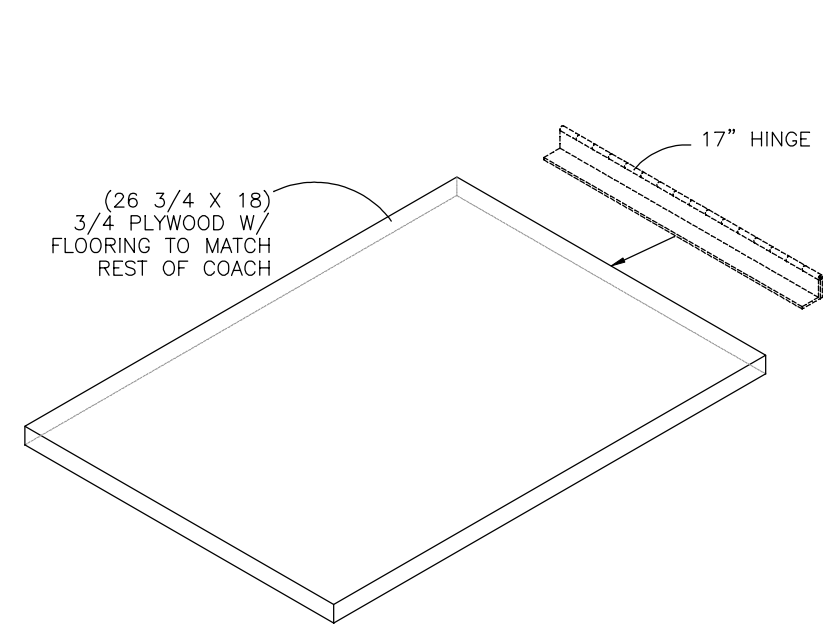
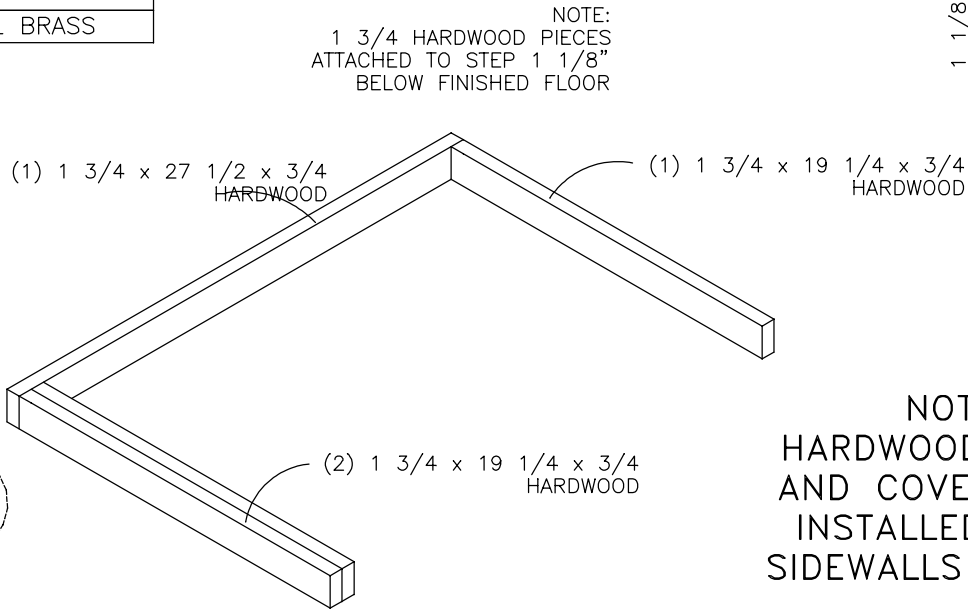
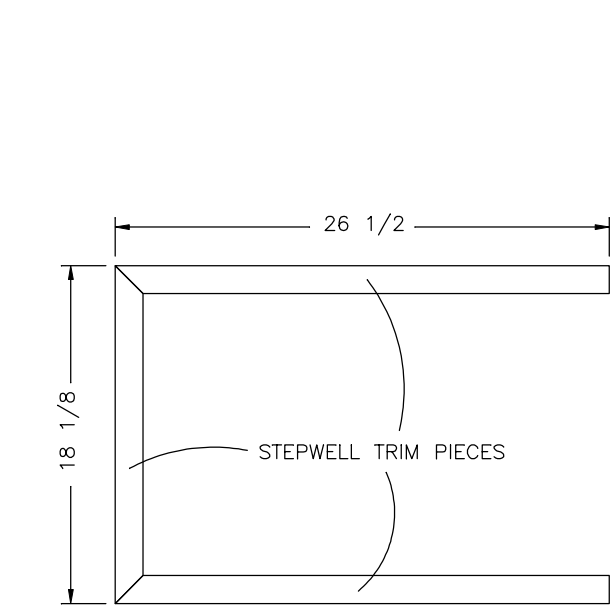
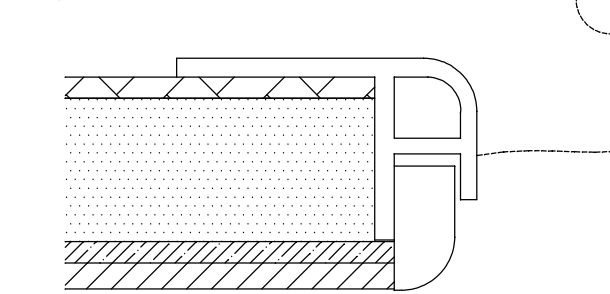
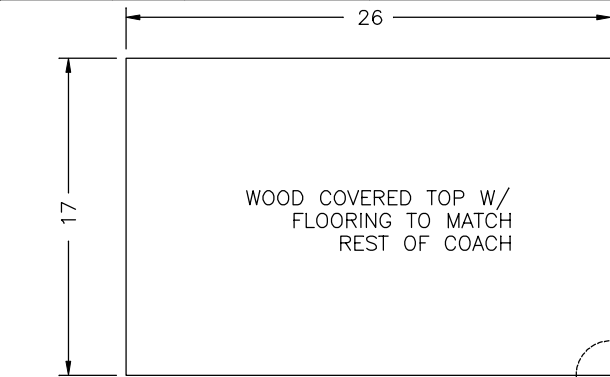
Side fill-in panel; 2.7 Luan



ALL MATERIAL TO BE 1/2" UNLESS NOTED OTHERWISE

NEWMAR CORP P.O. Box 30, Nappanee, IN. 46550 UNITS: INCHES TITLE BLOCK: 1TB	Model:	(R305)	Sheet	Drawn by:	Checked by:	Revision: ADDED THE TWO GAPS IN ON EITHER SIDE OF THE 1ST STEP LID	By: C. B.
		CS CA 3911	1 OF 2	R. W.	R. R.		Date:RR 11/20/17
	Title:	ENTRANCE STEP WELL W/ COVER	I.D. # 2018\CA\FRAME\PARTS\STEPWELL	Date:	Date:	Revision:	By:
				5/31/17	8/24/17		Date:

ITEM #	QTY	NEWMAR #	DESCRIPTION
1	1	70060	26 1/2 PIANO HINGE
2	1	139978	17" HINGE
3	1	140198	CATCH DOUBLE BALL BRASS



ALL MATERIAL TO BE 1/2" UNLESS NOTED OTHERWISE

NEWMAR CORP P.O. Box 30, Nappanee, IN. 46550 UNITS: INCHES TITLE BLOCK: 1TB	Model:	(R305)	Sheet	Drawn by:	Checked by:	Revision:	By:
	CS CA 3911		2 OF 2	R. W.	R. R.	ADDED THE TWO GAPS IN ON EITHER SIDE OF THE 1ST STEP LID	C. B.
	Title:	ENTRANCE STEP WELL W/ COVER	I.D. # 2018\CA\FRAME\PARTS\STEPWELL	Date:	Date:	Revision:	Date:RR 11/20/17
				5/31/17	8/24/17		By:
							Date: