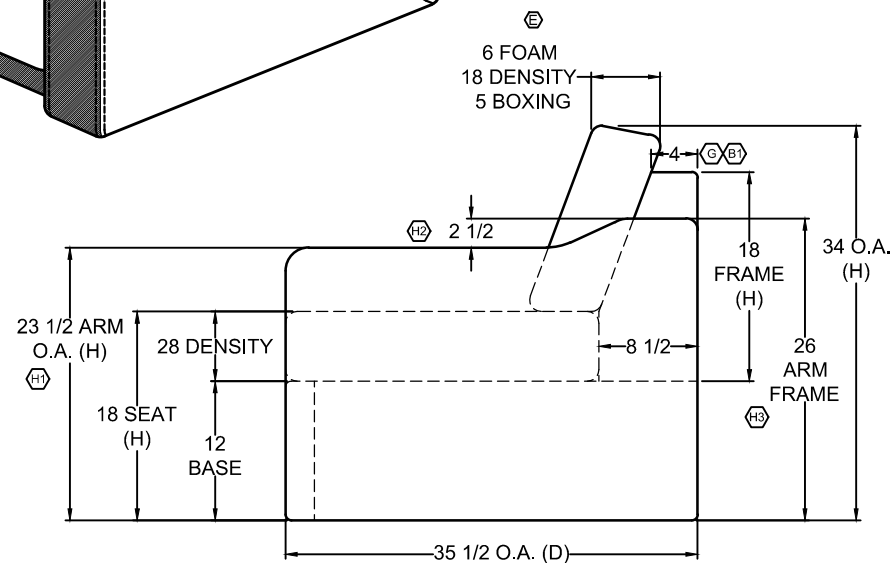
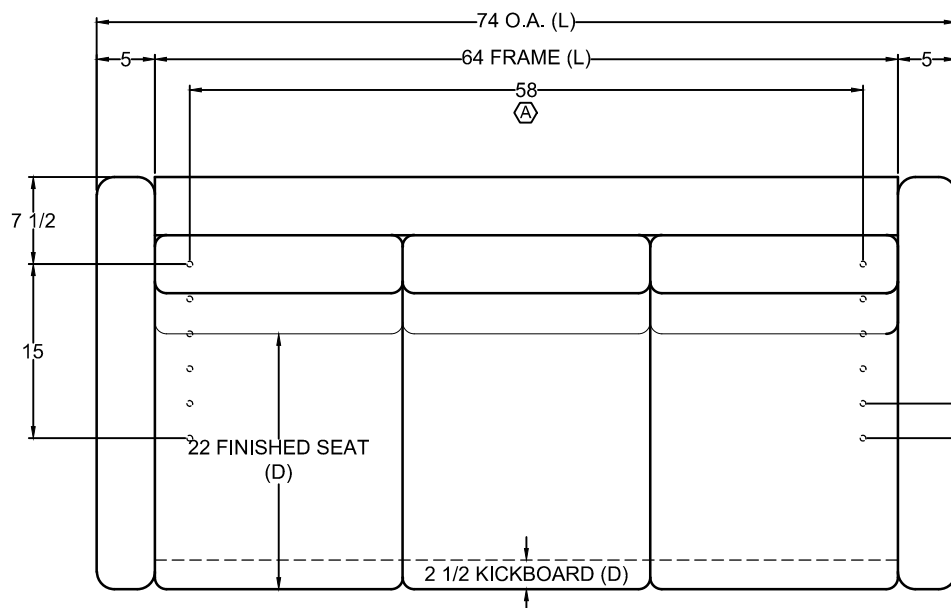
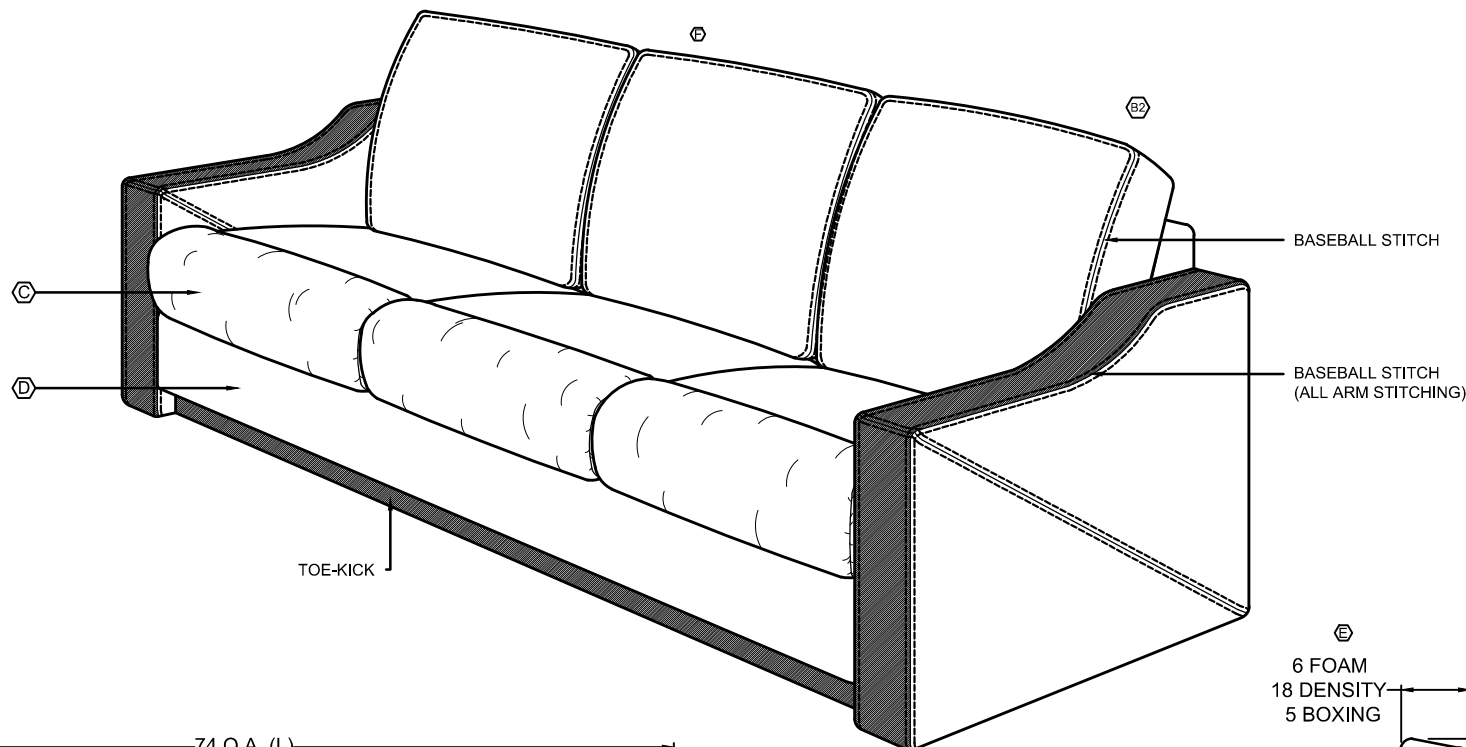




Sofa will not have accents



| | | | |
|------|---|---|------------|
| LB | H | PRODUCTION UPDATE: [1] CHANGED FRONT ARM FRAME HEIGHT TO 23 1/2"; WAS 25"; [2] ADDED HEIGHT DIMENSION FROM TOP OF FRONT ARM FRAME TO TOP OF BACK ARM FRAME. [3] ADDED BACK ARM FRAME DIMENSION. | 02.20.20 |
| JA | G | PRODUCTION UPDATE: CHANGE TOP OF BACK FRAME DEPTH BACK TO 4"; WAS 5". | 01.09.2020 |
| F.P. | F | PER RL: REMOVED SEAM STITCHING FROM THE BOTTOM OF A BACK PILLOW | 01.23.19 |
| F.P. | E | CUTTING REQUEST: ADDED 6" FOAM 18 DENSITY AND 5" BOXING TO THE BACK PILLOW. | 01.22.19 |
| J.A. | D | REMOVED ACCENT FROM KICKBOARD. | 11.17.17 |
| A.C. | C | REMOVED CUSHION WRAP FROM SEATS. | 10.13.17 |
| A.C. | B | B1 - MADE BACK FRAME 5" X 8 1/2"; WAS 4" X 8 1/2" B2 - CHANGED STYLE OF BACK PILLOWS | 09.08.17 |
| JA | A | PER PRODUCTION, WIDTH BETWEEN BOLTS IS 58"; WAS 61" | 08.24.17 |



13760 Midway St.
Cerritos, CA 90703
Tel 562-404-8111
Fax 562-404-7781

TITLE
2019 MOUNTAIN AIRE
74" SOFA BED

DWG. NO.
VI1000555

DR
A.CERVANTES

DATE
08.01.17

REV.
H

APV
J.H.

08.02.17

SCALE 1:1
DO NOT SCALE
DRAWING.
UNLESS OTHERWISE
SPECIFIED DIMENSIONS
ARE IN INCHES.

THIS DRAWING IS THE PROPERTY OF VILLA INTERNATIONAL MFG. ALL RIGHTS RESERVED.

REVISIONS