

REMOTE FUNCTIONS

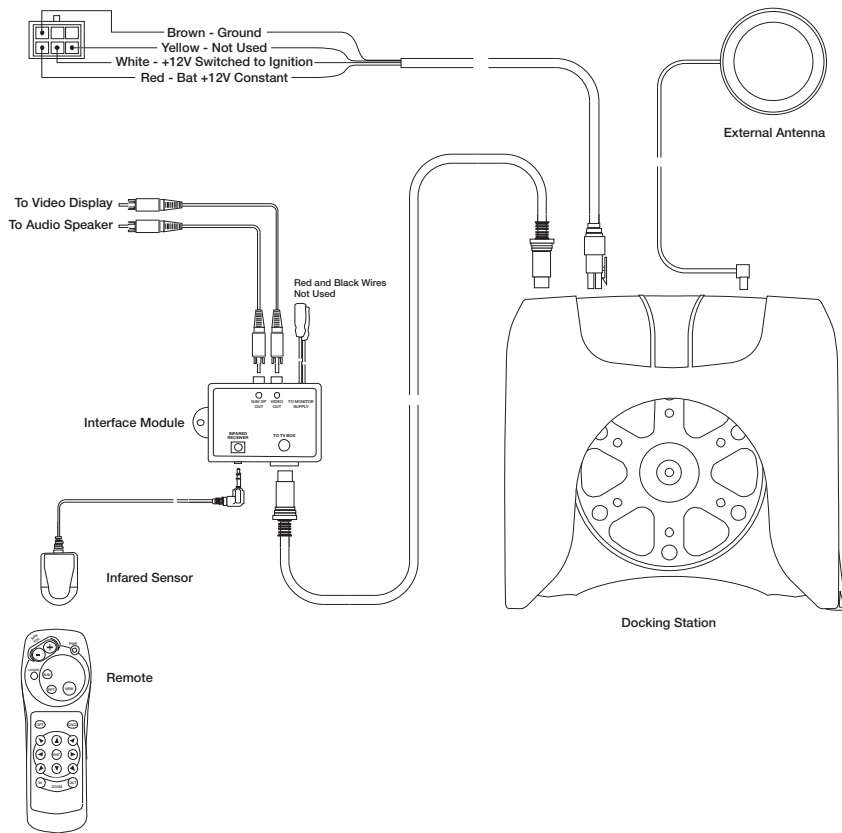


MONITOR FUNCTIONS

If your motorhome is equipped with the Sony RVTV monitor (model #VCB-MHD1), select Input “B” to display the navigational signal.



Connections



The 750V Plus uses a different wiring scheme than other 750 products. Please pay particular attention to the wire colors and their connections. Do not interchange the power harness with non-750V harnesses.

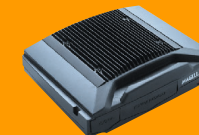
The Magellan 750Vplus



Installation and User Guide Addendum

This addendum provides supplemental information for installing and operating the 750Vplus navigation system. For installation and useage instructions for third-party displays, please consult the manual for that product. The remote control works similar to the keypad described in the manual. NOTE: You must press the NAV button on the remote control each time the unit is powered up and before using any other buttons. For more complete navigational information, please consult your Magellan 750NAV Plus User Manual.

Remote      Docking Station      Navigation Computer      GPS Antenna



IMPORTANT SAFETY WARNING



When using the Magellan 750Vplus, these safety rules must be followed to prevent accidents that can result in injury or death to yourself or others.

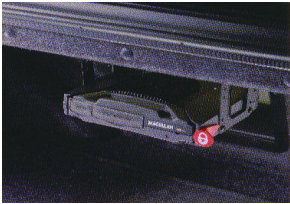
- The unit should be operated only by vehicle passengers or by the driver when the vehicle is stopped.
- When driving, the need to view the display is minimal. Voice prompts will guide you to your destination.
- It is your responsibility to ensure compliance to all traffic laws. Disregard any unsafe, hazardous or illegal route suggestions.
- While every attempt is made to ensure that the Magellan 750V+ database is accurate, roadways, points of interest, and business and service locations may change over time. Contact Magellan Customer Service toll-free at 1-877-4-CAR-NAV (1-877-422-7628) for information about upgrades.



960 Overland Court • San Dimas, CA 91773  
toll-free 1-877-4-CAR-NAV (1-877-422-7628)  
web [www.magellangps.com](http://www.magellangps.com)

© 2003 by Thales Navigation, Inc. All rights reserved.  
Magellan is a registered trademark of Thales Navigation.  
750Vplus is a trademark of Thales Navigation.

INSTALLING THE COMPUTER AND DOCKING STATION



Overhead Mount



Floor Mount

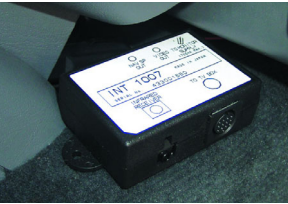
Determine whether you want the 750Vplus installed on the floor or overhead. Select the Docking Station Floor Mount or Overhead Mount Brackets. Attach the mounting brackets to the Docking Station using the #8-32 phillips screws. *Do not overtighten screws when securing the Mounting Brackets to the Docking Station or damage may occur.*

There are three possible ways to install the Docking Station's Mounting Brackets. The first option is to apply the carpet tape to the mounting bracket bottoms and secure them to the vehicle floor. (Do not attach the mounting brackets and Docking Station to loose carpeting – the Docking Station *must* be held firmly in place.) The next option is to use the four Self-Tapping Screws using them to secure the Mounting Brackets through the carpet only. The final option is to use the four Self-Tapping Screws to attach the mounting brackets completely through the vehicle floor or overhead surface.

Slide the Navigation Computer into the Docking Station until it is seated. Lock the Navigation Computer in place by pushing the red lock button. If the lock button does not push in, then Navigation Computer is not fully seated.

Connect the power cable to the docking station. Do not make any connections to the vehicle at this time.

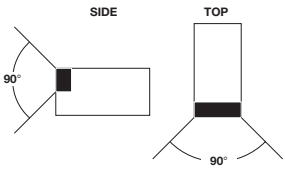
INSTALLING INTERFACE MODULE



Display & Audio Interface Module (red and black wires not used)

The interface module can be installed anywhere within 160 inches of the docking station. Connect one end of the DIN cable to the docking Station. Connect the end with the red "Display" label to the interface module (see wiring diagram).

INSTALLING THE IR SENSOR



Reception Angles



Console Mount

The IR sensor must be placed in an area where there are no obstructions and and direct signal can be acheived. The preferred placement would be as close to the screen as possible.

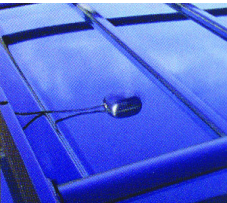
Clean the surface thoroughly before fixing IR sensor. Peel the backing from the IR sensor and firmly press into place.

Connect the IR sensor connector to the inter-face module.

INSTALLING THE GPS ANTENNA



Trunk Mount GPS Antenna



Roof Mount

The GPS Antenna should be located on the vehicle exterior. The trunk lid is recommended for passenger cars. Trucks, vans RV's, and sport utility vehicles should have the GPS Antenna located on the roof top. Ensure that the GPS Antenna's exterior view of the sky is not blocked by luggage racks or other accessories.

For best reception, the GPS Antenna must be placed at least 12 inches away from any radio or cellular antenna.

The GPS antanna comes in two lengths, 16 feet (included in the 750Vplus kit part number 980646-03, and IR docking station kit only part number 980646-08), and 20 feet (included in the 750Vplus RV kit part number 980646-04).

Connect the GPS antenna to the docking station.

INSTALLING THE DISPLAY AND EXTERNAL SPEAKER

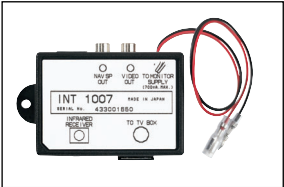
You will need two RCA connector type cables(not supplied) to connect the external NTSC display and external non-amplified speaker. Connect each to the appropriate connector on the interface module, and the other end to the appropriate connector of the dispaly and speaker (refer to the display and speaker manual for additional information). PLEASE NOTE: The interface module sound output IS amplified; DO NOT connect to an amplified speaker or you will cause an impedance mismatch causing a loud humming sound.

Magellan 750Vplus Parts Overview

The 750V Plus is very similar to the 750NAV Plus with two major differences. The docking station on the 750V+ has an RGB to NTSC converter buit-in to facilitate the use of third-party displays. Please refer to the third party display owners manual or the RV manufacturers provided operating instructions to select the proper video input to display the navigation signal.



IR RECEIVER



INTERFACE MODULE



DOCKING STATION



REMOTE CONTROL