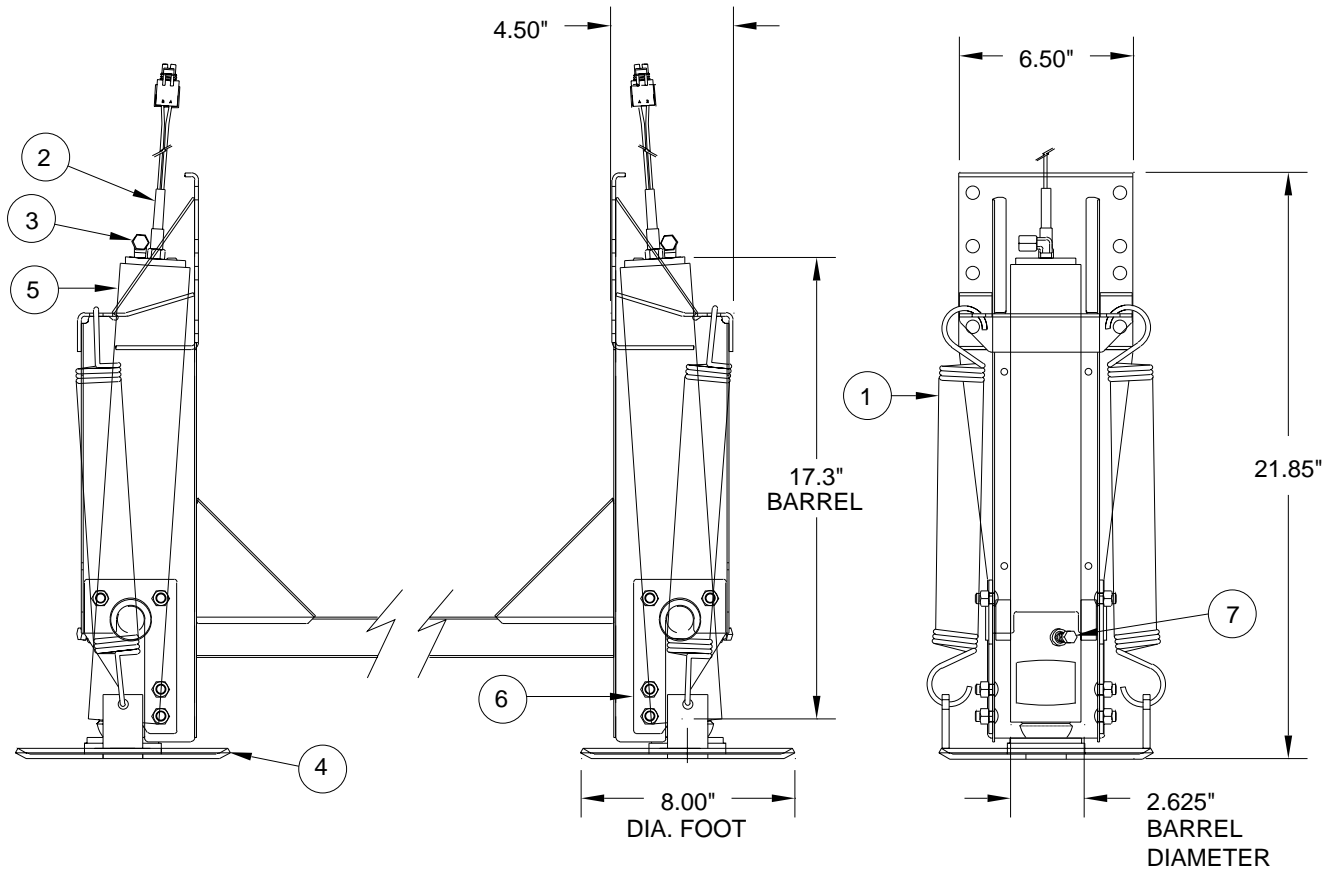


# **AP16105 - STRAIGHT-ACTING JACK, 7 DEGREE PIVOT** **9,000 # CAPACITY; 2.00" ROD DIAMETER; 13.00" STROKE**

REPLACEMENT OF ENTIRE ASSEMBLY IS NOT NECESSARY. REFER TO INDIVIDUAL ITEMS BELOW FOR REPLACEMENT PARTS.



**USED PRIMARILY ON THE REAR  
OF P-12 CHEVY CHASSIS WITH EITHER 19.5" OR 22.5" TIRES**

ITEM	PART	QTY	DESCRIPTION	ITEM	PART	QTY	DESCRIPTION
1	R3847	1	SPRING KIT 1-11/16" X 14"	5	RAP90491	1	CYL. ASSY. 2.00" X 13"
		2	SPRING 1-11/16" X 14"				(INCLUDES ITEM 3)
2	RAP1008	1	SWITCH WARNING 2-WIRE				(EXCLUDES ITEM 2)
			(REPLACES AP1008)	6	RAP90505	1	RETAINING PLATE KIT
3	RF1453	1	ELBOW 1/8" X 1/4"			2	RETAINING PLATES
4	RAP8464	1	8.00" DIAMETER FOOT			8	HHCS 3/8-16 X 1"
						8	HEX NUT 3/8-16 LOCK DEF.
				7	RF90272	1	HEX PLUG 1/8"

**NOTE:** INDENTED ITEMS ARE INCLUDED WITH PRECEDING ITEM.