

# HoseMaster Dimensions

## SPECIFICATIONS

HOSE LENGTH — 35' (standard) or 50' (optional)

VOLTAGE — 12 or 24 VDC

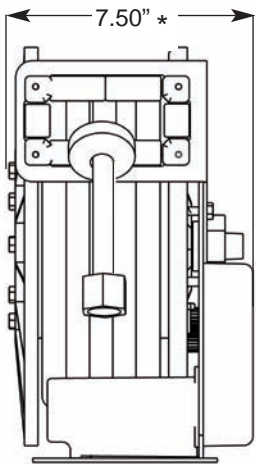
CURRENT (RETRACTION) — 3 amps

OVERLOAD CIRCUIT BREAKER — included

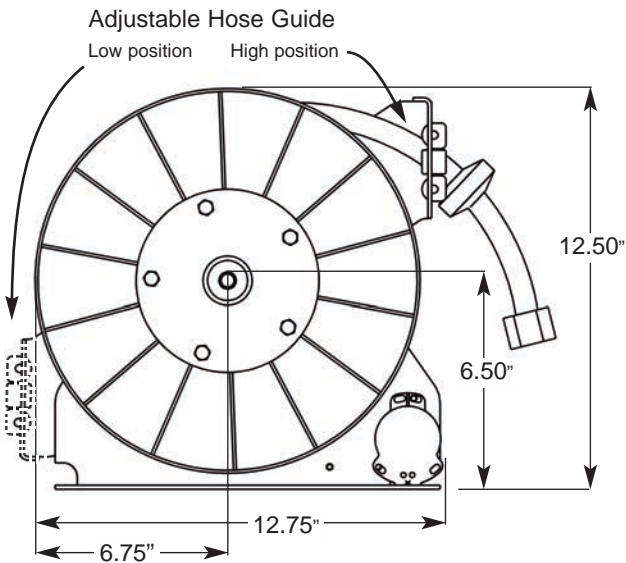
WATER CONNECTION — 1/2" NPT

HOSE TYPE — IAPMO approved (required for potable water applications)

WEIGHT — 16 lbs. with 35' hose length

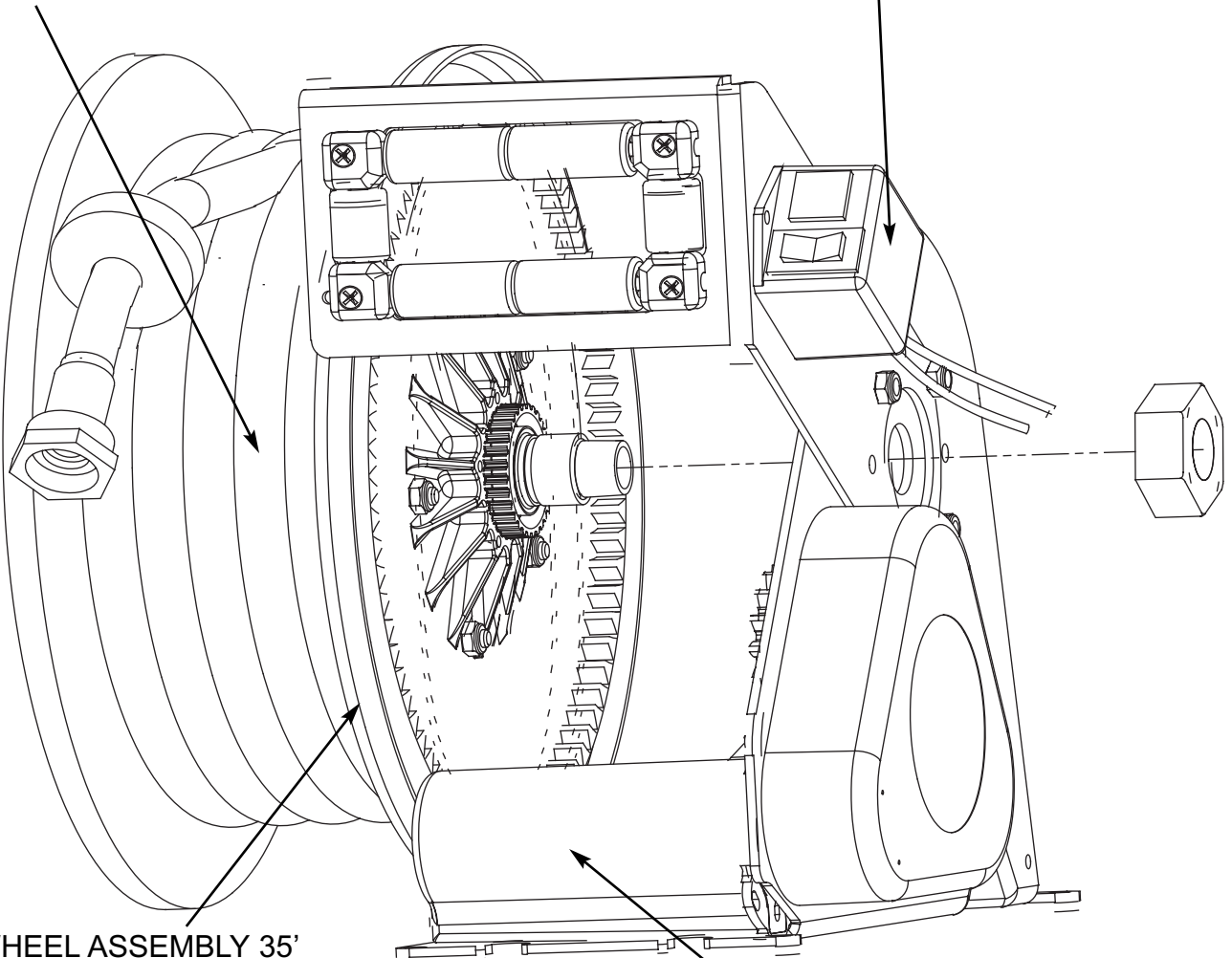


(\*NOTE: Add 1" to width dimension (8.5") for 50' hose)



19558-35 HOSE ASSEMBLY  
INCLUDES: 35' HOSE  
HUB HOSE CONNECTOR  
FEMALE SWIVEL

19553-1 SWITCH ASSEMBLY



19551 WHEEL ASSEMBLY 35'  
INCLUDES: ROTATING JOINT  
19558-35 HOSE ASSEMBLY  
2 FLANGES  
1/2" NPT CONNECTION  
END CAP  
GRIP GROMMET  
BUMPER  
WHITE TUBE

20550 MOTOR WITH  
52553 DRIVE GEAR