

Specification Details for the CF Series Portable Refrigerators/Freezers

Model	CF-018DC	CF-025DC	CF-035AC	CF-040AC	CF-050DC	CF-050AC	CF-080AC	CF-110AC
Gross Capacity (qt./cu. ft.)	19/0.70	24/0.90	33/1.10	39/1.30	52/1.70	52/1.70	85/2.80	113/3.77
12 oz. Can Capacity	23	27	41	48	68	68	103	144
Voltage	12/24V DC	12/24V DC	12/24V DC, 100-240V AC	12/24V DC, 100-240V AC	12/24V DC	12/24V DC, 100-240V AC	12/24V DC, 100-240V AC	12/24V DC, 100-240V AC
Avg. Power Consumption	35 watts, 2.9 amps	35 watts, 2.9 amps	45 watts, 3.75 amps	45 watts, 3.75 amps	45 watts, 3.75 amps	45 watts, 3.75 amps	55 watts, 4.5 amps	55 watts, 4.5 amps
Insulation	CFC-free polyurethane foam							
Compressor	Danfoss BD35F							
Refrigerant	R-134A							
Cabinet Material	High-impact polypropylene						Coated sheet steel	Coated sheet steel
Lid Material	Weather-resistant polyethylene							
Color	Pale gray/dark gray							
L x H x W (in/mm)	18.0 x 16.0 x 12.0 457 x 406 x 304	21.7 x 16.7 x 10.2 551 x 424 x 259	22.8 x 15.1 x 14.0 579 x 383 x 355	22.8 x 17.5 x 14.0 579 x 444 x 355	24.8 x 19.4 x 14.0 629 x 492 x 355	24.8 x 19.4 x 14.0 629 x 492 x 355	31 x 18.1 x 19.6 787 x 459 x 497	31.0 x 22.0 x 19.6 787 x 558 x 497
Net Weight (lbs/kg)	25.0/11.5	27.5/12.5	33.0/15.0	35.0/16.0	40.0/18.0	40.0/18.0	68.0/31.0	73.0/33.0
Lid	Hinged	Removable	Removable	Removable	Removable	Removable	Hinged	Hinged
Standard Features	<ul style="list-style-type: none"> • Repositional grid • Carrying handle 	<ul style="list-style-type: none"> • Special electronics • Removable coated-wire basket 	<ul style="list-style-type: none"> • Special electronics • Removable carrying handles • Removable coated-wire grid • Interior light 	<ul style="list-style-type: none"> • Special electronics • Removable carrying handles • Removable coated-wire basket • Interior light 	<ul style="list-style-type: none"> • Special electronics • Removable carrying handles • Removable coated-wire basket • Interior light 	<ul style="list-style-type: none"> • Special electronics • Removable carrying handles • Removable coated-wire basket • Interior light 	<ul style="list-style-type: none"> • Special electronics • Removable carrying handles • Removable coated-wire basket • Interior light 	<ul style="list-style-type: none"> • Special electronics • Removable carrying handles • 2 removable coated-wire baskets • Interior light
Accessories	<ul style="list-style-type: none"> • AC adapter • Insulating/protective cover (IC-CF-18) 	<ul style="list-style-type: none"> • AC adapter • Insulating/protective cover (IC-CF-25) 	<ul style="list-style-type: none"> • Insulating/protective cover (IC-CF-35) 	<ul style="list-style-type: none"> • Insulating/protective cover (IC-CF-40) 	<ul style="list-style-type: none"> • AC adapter • Insulating/protective cover (IC-CF-50) 	<ul style="list-style-type: none"> • Insulating/protective cover (IC-CF-50) 	<ul style="list-style-type: none"> • Insulating/protective cover (IC-CF-80) 	<ul style="list-style-type: none"> • Insulating/protective cover (IC-CF-110)



- The CF-50 fits in most marine slide drawers.

DOMETIC MARINE DIVISION

2000 N. Andrews Ave. Ext. I Pompano Beach, FL 33069 USA | 954-973-2477 | Fax 954-979-4414
www.DometicUSA.com | MarineSales@DometicUSA.com

24/7 Tech Support for United States & Canada:

8:00 AM to 5:00 PM Eastern Time: 800-542-2477

After hours and weekends: 888-440-4494

International Sales & Service:

Europe & the Middle East: Call +44(0)870-330-6101

For all other areas visit our website to find your nearest distributor.



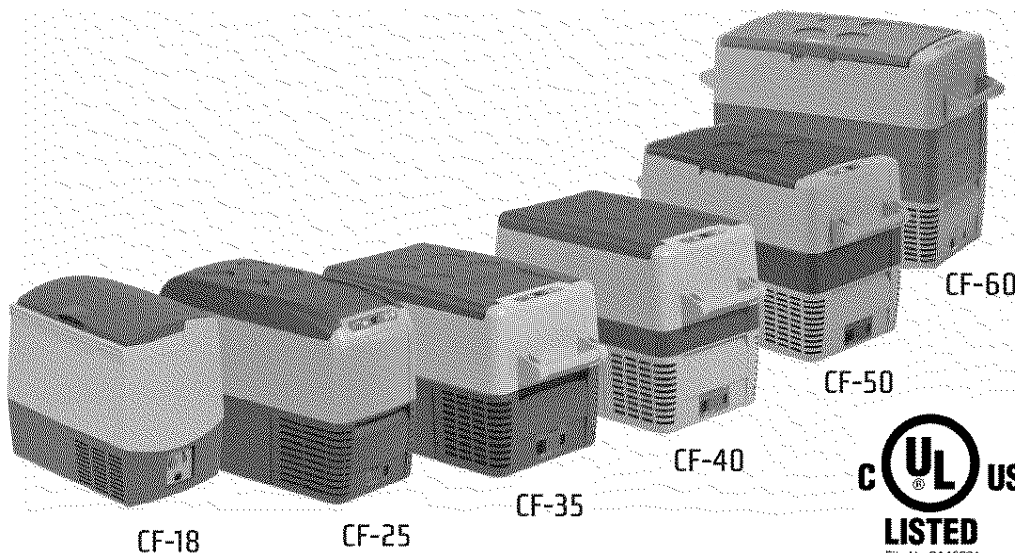
Dealer:



_CF-18_60.book Seite 1 Donnerstag, 26. Juli 2007 3:18 15


 **Dometic**

THE SIGN OF COMFORT



Dometic CoolFreeze

CF-18, CF-25, CF-35, CF-40, CF-50, CF-60

EN	7	Compressor Cooler Instruction Manual
FR	26	Glacière à compression Manuel d'utilisation
ES	48	Nevera por compresor Instrucciones de uso

Form No.54-AA-MAD65A 4/08
Dometic Corporation
LaGrange IN 46761





_CF-18_60.book Seite 2 Donnerstag, 26. Juli 2007 3:18 15



GB

We will be happy to provide you with further information about DOMETIC products.
Please order our free catalogue with no obligation to buy on our homepage:
www.dometic.com

F

Demandez d'autres informations relatives à la large gamme de produits de la maison
DOMETIC. Commandez tout simplement notre catalogue gratuitement et sans
engagement à l'adresse internet suivante : www.dometic.com

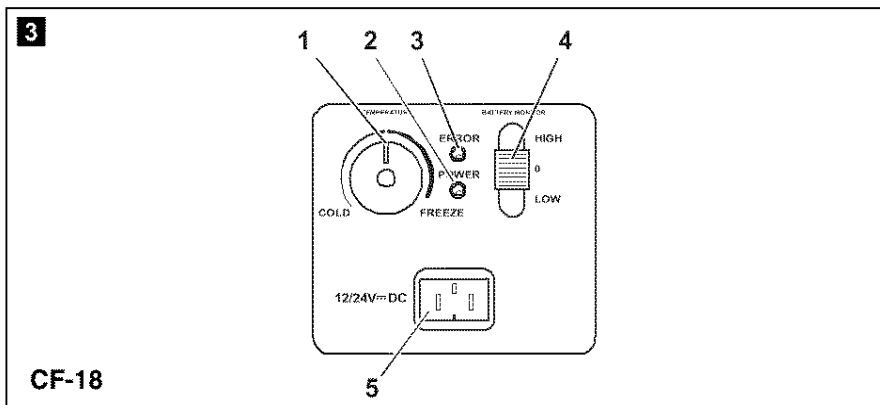
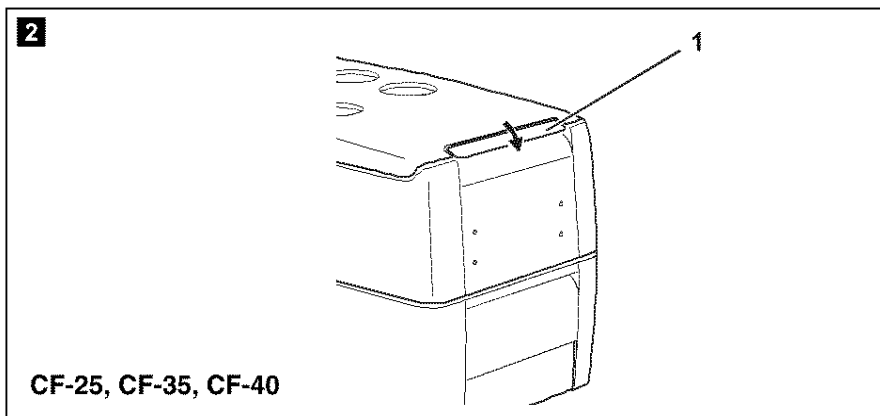
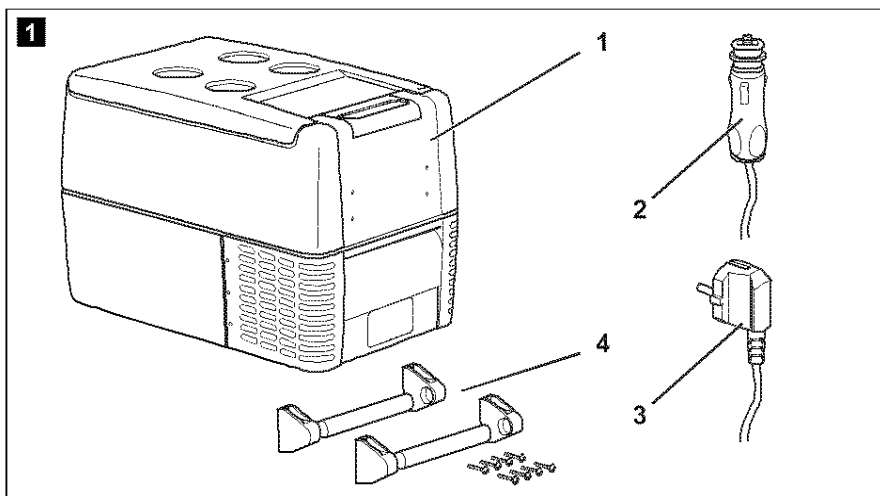
E

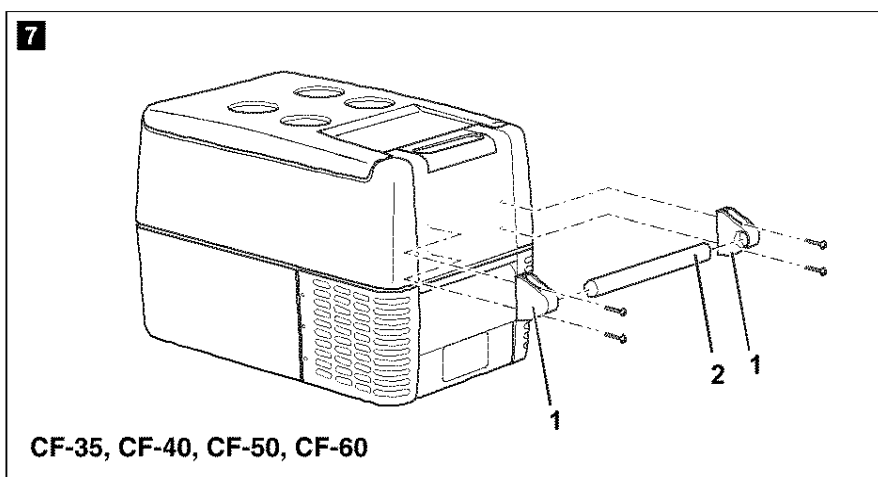
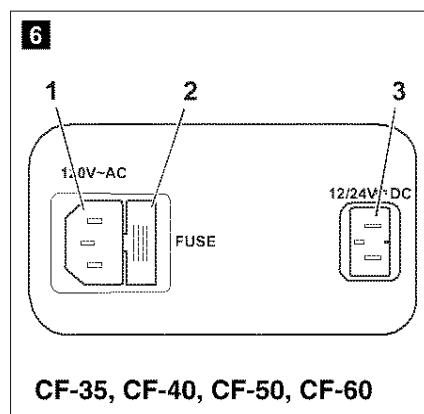
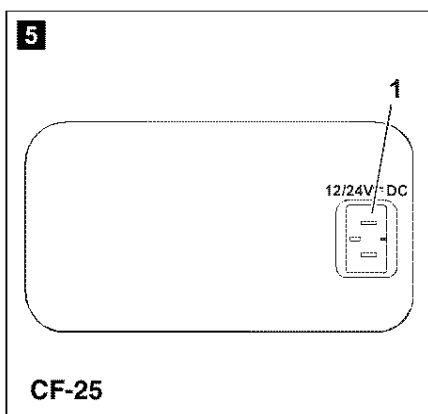
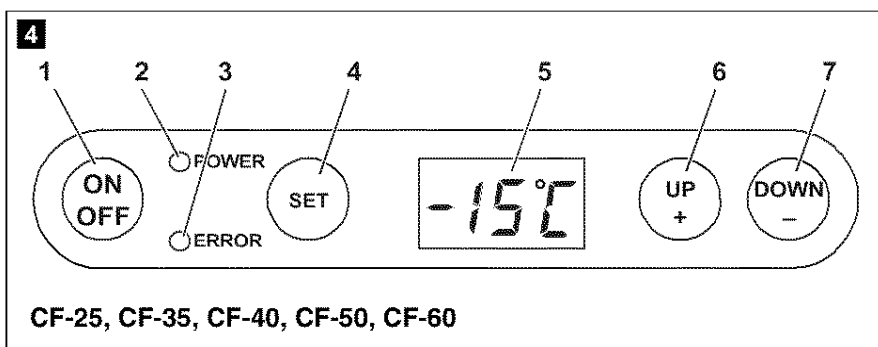
Solicite más información sobre la amplia gama de productos de la empresa DOMETIC.
Solicite simplemente nuestros catálogos de forma gratuita y sin compromiso en la
dirección de Internet: www.dometic.com





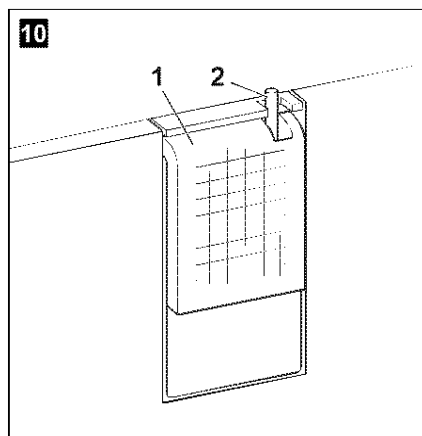
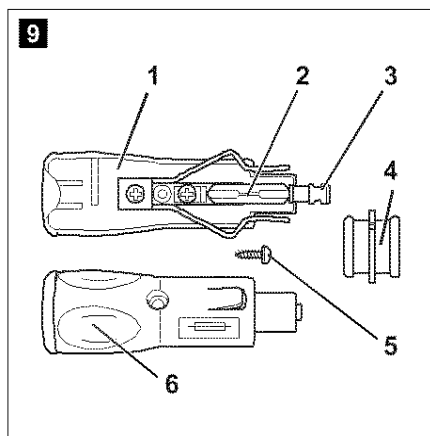
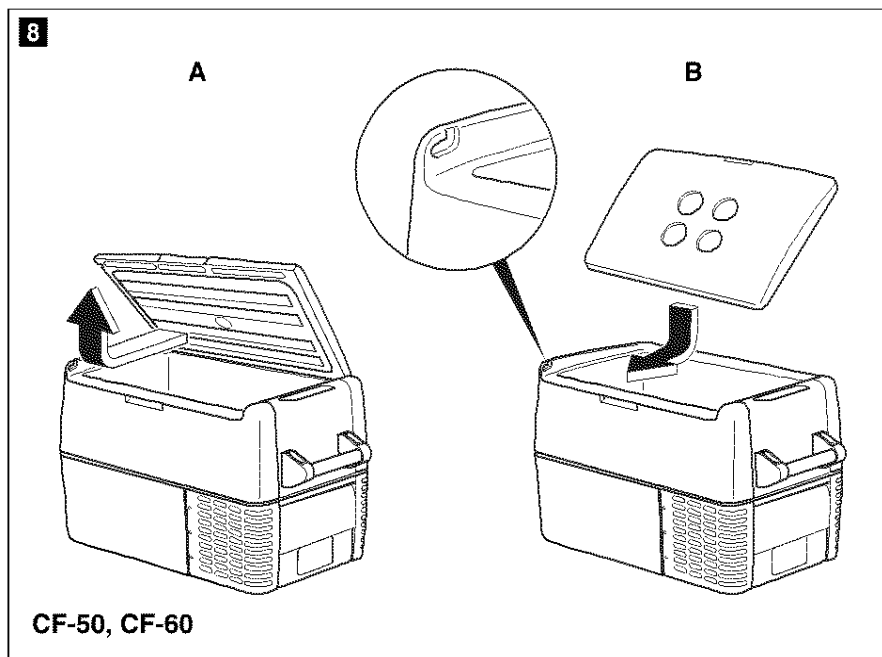
_CF-18_60.book Seite 3 Donnerstag, 26. Juli 2007 3:18 15

**Dometic CoolFreeze**





_CF-18_60.book Seite 5 Donnerstag, 26. Juli 2007 3:18 15

**Dometic CoolFreeze**



Dometic CoolFreeze

Please read this operating manual carefully before starting the device. Keep it in a safe place for future reference. If the device is handed over to another person, this operating manual must be handed over along with the device.

Contents

1	Notes on using the manual	28
2	Safety instructions	28
2.1	General safety	29
2.2	Operating the device safely	30
3	Scope of delivery	31
4	Intended use	31
5	Function description	32
5.1	Operating and display elements	33
5.2	Accessories	35
6	Operation	35
6.1	Before initial use	35
6.2	Energy saving tips	36
6.3	Connecting the cooler	37
6.4	Using the battery monitor	38
6.5	Using the cooler	39
6.6	Setting the temperature	40
6.7	Switching off the cooler	41
6.8	Defrosting the cooler	41
6.9	Replacing the device fuse	42
6.10	Replacing the plug fuse (12/24 V)	42
6.11	Replacing the light bulb	43
7	Cleaning and maintenance	43
8	Guarantee	44
9	Troubleshooting	44
10	Disposal	45
11	Technical data	45





Notes on using the manual

Dometic CoolFreeze



1 Notes on using the manual

The following symbols are used in this operating manual:

**Caution!**

Safety instruction: Failure to observe this instruction can cause personal injury or damage the device.

**Caution!**

Safety instruction relating to a danger from an electrical current or voltage. Failure to observe this instruction can cause injury or damage the device and impair its function.

**Note**

Supplementary information for operating the device.

➤ **Action:** This symbol indicates that action is required on your part. The required action is described step-by-step.

✓ This symbol indicates the result of an action.

Fig. 1, page 3: This refers to an element in an illustration. In this case, item 1 in figure 2 on page 3.

Please observe the following safety instructions.

2 Safety instructions

**• Caution!**

DOMETIC International will not be held liable for claims for damage resulting from the following:

- Damage to the device resulting from mechanical influences and overvoltage
- Alterations to the device made without the explicit permission of DOMETIC International
- Use for purposes other than those described in the operating manual



Dometic CoolFreeze

Safety instructions

2.1 General safety



- **Caution – Danger of electrocution!**

When using the device on boats: If the device is powered by the mains, ensure that the power supply is protected with a ground fault interrupter circuit.

- Check that the voltage specification on the type plate corresponds to that of the energy supply.
- Only connect the device as follows:
 - With the cable supplied (Fig. **1** 2, page 3) to the cigarette lighter in the vehicle or to a 12/24 V plug socket in the vehicle
 - or with the enclosed connection cable (Fig. **1** 3, page 3) to the 120 V AC mains (only **CF-35**, **CF-40**, **CF-50**, **CF-60**).
- If the connection cable is damaged, it must be replaced by a special cord or assembly available from the manufacturer or service agent.
- Do not pull the plug out of the cigarette lighter or the socket by the cable.
- Pull out the connection cable:
 - Before cleaning and maintenance
 - After use
 - Before changing a fuse
- Disconnect the cooling device and other power consuming devices from the battery before you connect the battery to a quick charging device. Overvoltage can damage the electronics of the device.



- **Electronic devices are not toys!**

Always keep and use the device out of the reach of children.

- Do not operate the device if it is visibly damaged.
- This device may only be repaired by qualified personnel. Inadequate repairs can lead to considerable hazards. Should your device need to be repaired, please contact DOMETIC customer service.
- Do not open the refrigerant circuit under any circumstances!
- The cooler is not suitable for transporting caustic materials or materials containing solvents.
- Food may only be stored in its original packaging or in suitable containers.





2.2 Operating the device safely



- **Caution – Danger of electrocution!**

Do not touch exposed cables with your bare hands. This especially applies when operating the device from an AC mains.

- Before starting the device, ensure that the power supply line and the plug are dry.



- Do not place any electrical devices inside the cooler.
- Set up the device in a dry location where it is protected against splashing water.
- Protect the device and the cable against rain and moisture.
- Do not place the device near naked flames or other heat sources (heaters, direct sunlight, gas ovens etc.)

- **Caution! Danger of overheating!**

Ensure at all times that there is sufficient ventilation so that the heat generated during normal operation is able to dissipate. Ensure that the ventilation slots are not covered. Make sure that the device is sufficiently far away from walls and other objects so that the air can circulate.

- Never immerse the device in water.
- Do not fill the inner container with ice or fluid.



**Dometic CoolFreeze**

Scope of delivery

3 Scope of delivery

Fig. **1**, page 3, shows the scope of delivery.

Item	Quantity	Description
1	1	Cooler
2	1	Connection cable for 12/24 V _{DC} connection Only CF-35, CF-40, CF-50, CF-60
3	1	Connection cable for 120 V _{AC} connection Only CF-35, CF-40, CF-50, CF-60
4	2	Carrying handle, consisting of: – 2 holders – 1 handle – 4 fastening screws
–	1	Operating manual

4 Intended use

The cooler is suitable for cooling and freezing foods. The device is also suitable for use on boats.



The device is designed to be operated from a 12 V_{DC} or 24 V_{DC} on-board supply socket of a vehicle (e. g. cigarette lighter), boat or caravan as well as from a 120 V_{AC} mains (for **CF-18** and **CF-25** only with the accessory to 220–240 V_{AC}).

**Caution – When cooling perishable medicines!**

If you wish to cool medicines, please check if the cooling capacity of the device is adequate for this purpose.



5 Function description

The cooler can chill products, keep them cool as well as freeze them. A maintenance-free, CFC-free refrigerant circuit with compressor provides the cooling. The extra strong CFC-free insulation and powerful compressor ensure especially fast cooling.

The cooler is designed for mobile use and can be carried by using a folding carrying bracket (**CF-18**), two recessed grips (**CF-25**) or two removable carrying handles (**CF-35, CF-40, CF-50, CF-60**).

When used on boats, the cooler can withstand a constant heel (inclination) of 30°.

Scope of functions:

	CF-18	CF-25	CF-35, CF-40, CF-50, CF-60
Power supply with priority circuit for connecting to the AC mains	—	—	•
Battery monitor for protecting the vehicle battery	2-level	3-level	
Turbo mode for rapid cooling	—	•	•
Display with temperature gauge	—	•	•
Temperature setting	With rotary-control	With two buttons in steps of 1 °C (2 °F)	
Removable carrying handles	—	—	•



**Dometic CoolFreeze**

Function description

5.1 Operating and display elements

CF-25, CF-35, CF-40

Lock for lid: Fig. **2** 1, page 3

CF-18

Operating panel and connection socket (Fig. **3**, page 3):

Item	Description	Explanation
1	TEMPERATURE	Temperature controller, cooling temperature at the end positions: COLD: +10 °C (+50 °F) FREEZE: -18 °C (0 °F)
2	POWER	Operating display LED is lit green: Device is switched on and ready for operation LED is lit yellow: Set temperature has been reached
3	ERROR	LED flashes red: Switched on device is not ready for operation
4	BATTERY MONITOR	Switch-on device/battery monitor: 0: Device is switched off HIGH: Device is switched on, battery monitor is in HIGH mode LOW: Device is switched on, battery monitor is in LOW mode
5	12/24V DC	Connection socket DC voltage supply



**Function description****Dometic CoolFreeze**

CF-25, CF-35, CF-40, CF-50, CF-60

Operating panel (Fig. **4**, page 4)

Item	Description	Explanation
1	ON OFF	Switches the cooler on or off when the button is pressed for between one and two seconds
2	POWER	Status indication LED lights up green: Compressor is on LED lights up orange: Compressor is off
3	ERROR	LED flashes red: Device is switched on but not ready for operation
4	SET	Selects the input mode - Temperature setting - Celsius or Fahrenheit display - Set battery monitor
5	—	Display, shows the information
6	UP +	Press once to increase the value
7	DOWN —	Press once to decrease the value

CF-25

Connection sockets (Fig. **5**, page 4):

Item	Description
1	Connection socket DC voltage supply

CF-35, CF-40, CF-50, CF-60

Connection sockets (Fig. **6**, page 4):

Item	Description
1	Connection socket AC voltage supply
2	Fuse holder
3	Connection socket DC voltage supply



Dometic CoolFreeze

Operation

5.2 Accessories

If you want to operate the coolers **CF-18** and **CF-25** from the 220–240 V AC mains, be sure to use the rectifier DOMETIC CoolPower EPS100.

6 Operation

6.1 Before initial use



Note

Before starting your new cooler for the first time, you should clean it inside and outside with a damp cloth for hygienic reasons (please also refer to the chapter “Cleaning and maintenance” on page 43).

Mounting the handles

CF-35, CF-40, CF-50, CF-60

The handles are enclosed unassembled. If you wish to attach the handles, proceed as follows:

- Make a handle by putting two holders (Fig. **7** 1, page 4) and a handle (Fig. **7** 2, page 4) together.
- Fasten the grip with the enclosed screws in the holes provided.

Turning the lid stop around

CF-50, CF-60

You can turn the lid stop around if you want to open the lid from the other side.

To do this, proceed as follows:

- Open the lid and pull it out (Fig. **8** A, page 5).
- Turn the lid.
- Insert the lid in the lid holders on the side opposite the cooler (Fig. **8** B, page 5).





Operation

Dometic CoolFreeze



Selecting the temperature units

CF-25, CF-35, CF-40, CF-50, CF-60

You can switch the temperature display between Celsius and Fahrenheit. This is how to do it:

- Switch on the cooler.
- Press the "SET" button (Fig. **4** 4, page 4) twice.
- Use the "UP +" (Fig. **4** 6, page 4) and "DOWN -" (Fig. **4** 7, page 4) buttons to select Celsius or Fahrenheit.
- ✓ The selected temperature units then appear in the display for a few seconds. The display flashes several times before it returns to the current temperature.

6.2 Energy saving tips

- Choose a well ventilated installation location which is protected from direct sunlight.
- Allow hot food to cool down first before you place it into the device.
- Do not open the cooler more often than necessary.
- Do not leave the lid open for longer than necessary.
- Defrost the cooler once a layer of ice forms.
- Avoid unnecessary low temperatures.





Dometic CoolFreeze

Operation

6.3 Connecting the cooler

Connecting to a battery (Vehicle or boat)

The cooler can be operated with 12 V or 24 V DC.



Caution – Danger of damaging the device!

Disconnect the cooler and other consumer units from the battery before you connect the battery to a quick charging device. Overvoltage can damage the electronics of the device.

For safety reasons the cooler is equipped with an electronic system to prevent the polarity reversal. This protects the cooler against short-circuiting when connecting to a battery.

- Plug the 12/24-V connection cable (Fig. **1** 2, page 3) into the DC voltage socket and also into the cigarette lighter or a 12 V or 24 V socket.

Connecting to a 120 V AC mains (E.g. in the home or office)



Caution – Danger of electrocution!

Never handle plugs and switches with wet hands or if you are standing on a wet surface.



Caution – Danger of electrocution!

If you are operating your cooler on board a boat from a mains connection of 120 V AC, you must install a residual current circuit breaker between the 120 V AC mains and the cooler. Seek advice from a trained technician.

CF-35, CF-40, CF-50, CF-60

The coolers **CF-35, CF-40, CF-50, CF-60** have an integrated multi-voltage power supply with priority circuit for connecting to an AC voltage source of 120 V. The priority circuit automatically switches the cooler to mains operation, if the device is connected to a 120 V AC mains, even if the 12/24 V connection cable is still attached.

When switching between the AC mains and the battery supply, the red LED may light up briefly.





Operation

Dometic CoolFreeze

- Plug the 120 V connection cable (Fig. **1** 3, page 3) into the AC voltage socket and connect it to the 120 V AC voltage mains (only **CF-35**, **CF-40**, **CF-50**, **CF-60**).

CF-18, CF-25

To operate the coolers **CF-18** and **CF-25** from the 220–240 V AC mains, use the rectifier DOMETIC CoolPower EPS100 (accessory).

6.4 Using the battery monitor



The device is equipped with a multi-level battery monitor that protects your vehicle battery against excessive discharging when the device is connected to the on-board 12/24 V supply.

If the cooler is operated when the vehicle ignition is switched off, the cooler switches off automatically as soon as the supply voltage falls below a set level. The cooler will switch back on once the battery has been recharged to the restart voltage level.



Caution – Danger of damage!

When switched off by the battery monitor, the battery will no longer be fully charged. Avoid starting repeatedly or operating current consumers without longer charging phases. Ensure that the battery is recharged.

In “HIGH” mode, the battery monitor responds faster than at the levels “LOW” and “MED” (see the following table).

Battery monitor mode	CF-18		CF-25, CF-35, CF-40, CF-50, CF-60		
	LOW	HIGH	LOW	MED	HIGH
Switch-off voltage at 12 V	10.4 V	11.5 V	10.1 V	11.4 V	11.8 V
Restart voltage at 12 V	11.5 V	12.5 V	11.1 V	12.2 V	12.6 V
Switch-off voltage at 24 V	22.1 V	24.0 V	21.5 V	24.1 V	24.6 V
Restart voltage at 24 V	23.6 V	25.4 V	23.0 V	25.3 V	26.2 V

**Dometic CoolFreeze****Operation**

This is how to select the battery monitor mode:

CF-25, CF-35, CF-40, CF-50, CF-60

- Switch on the cooler.
- Press the "SET" button (Fig. **4** 4, page 4) three times.
- Use the "UP +" (Fig. **4** 6, page 4) and "DOWN -" (Fig. **4** 7, page 4) buttons to select the battery monitor mode.
- ✓ The selected mode then appears in the display for a few seconds. The display flashes several times before it returns to the current temperature.

**Note**

When the cooler is supplied by the starter battery, select the battery monitor mode "HIGH". If the cooler is connected to a supply battery, the battery monitor mode "LOW" will suffice.

If you wish to operate the cooler from the AC mains, set the battery monitor to the "LOW" position.

6.5**Using the cooler****Caution – Danger of overheating!**

Ensure at all times that there is sufficient ventilation so that the heat that generated during operation can dissipate. Ensure that the ventilation slots are not covered. Make sure that the device is sufficiently far away from walls and other objects so that the air can circulate. There should be a clearance of ~150mm from the fridge handle.

- Place the cooler on a firm foundation.
Make sure that the ventilation slots are not covered and that the heated air can dissipate.

**Note**

Place the cooler as shown (Fig. **1**, page 3). If you operate the box in a different position it can be damaged.

- Close the cooler, see "Connecting the cooler" on page 37.

**Note**

If you wish to operate the cooler from the AC mains, set the battery monitor to the "LOW" position.



Operation

Dometic CoolFreeze



Caution – Danger from excessively low temperature!

Ensure that the only those objects are placed in the cooler that are intended to be cooled at the selected temperature.

CF-18

- **CF-18:** Slide the sliding switch (Fig. **3** 4, page 3) to HIGH if you wish to operate from a starter battery or to “LOW” if you want to operate from a supply battery.
- ✓ The “POWER” LED is lit green.
- ✓ The cooler starts cooling the interior.
- ✓ When the cooling temperature has been reached, the “POWER” LED is yellow lit.

CF-25, CF-35, CF-40, CF-50, CF-60

- Press the “ON/OFF” button (Fig. **4** 1, page 4) for between one and two seconds.
- ✓ The “POWER” LED lights up.
- ✓ The display (Fig. **4** 5, page 4) switches on and shows the current cooling temperature.



Note

The temperature displayed is that of the middle of the interior. The temperatures elsewhere can deviate from this temperature.

- ✓ The cooler starts cooling the interior.

Locking the cooler

- Close the lid.
- Press the lock (Fig. **2** 1, page 3) down, until it latches in place audibly.

6.6 Setting the temperature

CF-18

- Set the cooling temperature with the temperature controller (Fig. **3** 1, page 3).



Dometic CoolFreeze

Operation

CF-25, CF-35, CF-40, CF-50, CF-60

- Press the "SET" button (Fig. **4** 4, page 4) once.
- Use the "UP +" (Fig. **4** 6, page 4) and "DOWN -" (Fig. **4** 7, page 4) buttons to select the cooling temperature.
- ✓ The cooling temperature appears in the display for a few seconds. The display flashes several times and then the current temperature is displayed again.

6.7 Switching off the cooler

- Empty the cooler.
- Switch the cooler off.
- Pull out the connection cable.

If you do not want to use the cooler for a longer period of time:

- Leave the cover slightly open. This prevents odour build-up.

6.8 Defrosting the cooler

Humidity can form frost in the interior of the cooling device or on the vaporiser. This reduces the cooling capacity. Defrost the device in good time to avoid this.



Caution – Danger of damaging the device!

Never use hard or pointed tools to remove ice or to loosen objects which have frozen in place.

To defrost the cooler, proceed as follows:

- Take out the contents of the cooling device.
- If necessary, place them in another cooling device to keep them cool.
- Switch off the device.
- Leave the cover open.
- Wipe off the defrosted water.





Operation

Dometic CoolFreeze

6.9 Replacing the device fuse

Only CF-35, CF-40, CF-50, CF-60



Caution – Danger of electrocution!

Disconnect the connection cable before you replace the device fuse.

- Pull off the connection cable.
- Pry out the fuse insert (Fig. **6** 2, page 4) with a screwdriver.
- Replace the defective fuse with a new one that has the same rating (T2,5AL 250V).
- Press the fuse insert back into the housing.

6.10 Replacing the plug fuse (12/24 V)

- Pull the adapter sleeve (Fig. **9** 4, page 5) off of the plug.
- Unscrew the screw (Fig. **9** 5, page 5) out of the upper half of the housing (Fig. **9** 1, page 5).
- Carefully raise the upper half of the housing from the lower (Fig. **9** 6, page 5) half.
- Take out the contact pin (Fig. **9** 3, page 5).
- Replace the defective fuse (Fig. **9** 2, page 5) with a new one that has the same rating (8A 32V).
- Re-assemble the plug in the reverse order.





Dometic CoolFreeze

Cleaning and maintenance

6.11 Replacing the light bulb

Only CF-25, CF-35, CF-40, CF-50, CF-60

- Press the switch pin (Fig. 10 2, page 5) downwards so that the transparent part (Fig. 10 1, page 5) of the lamp can be removed at the front.
- Replace the light bulb.



Note

Make sure that the polarity is correct. The side of the light bulb marked with a plus must be placed at the contact which is connected to the red cable.



Note

The LEDs in the light bulb must be aligned with the transparent part of the lamp.

- Press the transparent part of the lamp back into the housing.

7

Cleaning and maintenance



Caution – Danger of electrocution!

Always pull out the mains plug before you clean and service the device.



Caution – Danger of damaging the device!

Never clean the device under running water or in dish water.
Do not use abrasive cleaning agents or hard objects during cleaning as these can damage the device.
Never use brushes, scouring pads or hard or pointed tools to remove ice or to loosen objects which have frozen in place.

- Occasionally clean the inside of the device with a damp cloth.





Guarantee

Dometic CoolFreeze

8 Guarantee

Our general guarantee conditions apply. If the product is defective, please send it back to the DOMETIC branch in your country (addresses on the back of the operating manual) or to your dealer. For repair and guarantee processing, please include the following documents when you send in the device:

- A copy of the receipt with purchasing date
- Reason for the claim or a description of the fault

9 Troubleshooting

Fault	Possible cause	Suggested remedy
Device does not function, LED does not glow.	There is no voltage present in the 12/24 V socket (cigarette lighter) in your vehicle.	The ignition must be switched on in most vehicles to apply current to the cigarette lighter.
	No voltage present in the AC voltage socket.	Try using another plug socket.
	The device fuse is defective.	Replace the device fuse, see "Replacing the device fuse" on page 42.
	The integrated mains adapter is defective.	This can only be repaired by an authorised repair centre.
The device does not cool (plug is inserted, "POWER" LED is lit).	Defective compressor.	This can only be repaired by an authorised customer services unit.
The device does not cool (plug is inserted, "ERROR" LED flashes).	Battery voltage is too low.	Test the battery and charge it as needed.
When operating from the 12/24-V socket (cigarette lighter): The ignition is on and the device is not working and the LED is not lit. Pull the plug out of the socket and make the following checks.	The cigarette lighter socket is dirty. This results in a poor electrical contact.	If the plug of your cooler becomes very warm in the cigarette lighter socket, either the lighter socket must be cleaned or the plug has not been assembled correctly.
	The fuse of the 12/24 V plug has blown.	Replace the fuse (5 A) in the cigarette lighter plug, see "Replacing the plug fuse (12/24 V)" on page 42.
	The vehicle fuse has blown.	Replace the vehicle's 12/24 V socket fuse (usually 15 A). Please refer to your vehicle's operating manual.
The display shows an error message (e.g. "Err1") and the appliance does not cool.	The appliance has switched off due to an internal fault.	This can only be repaired by an authorised repair centre.



Dometic CoolFreeze

Disposal

10 Disposal

- Place the packaging material in the appropriate recycling waste bins wherever possible.



If you wish to finally dispose of the device, ask your local recycling centre or specialist dealer for details about how to do this in accordance with the applicable disposal regulations.

11 Technical data

	CF-18	CF-25	CF-35
Overall capacity:	18 litres	23 litres	31 litres
Connection voltage:	12/24 V _{DC}		12/24 V _{DC} and 120V _{AC}
Rated current:			
– 12 V _{DC} :	3.1 A	6.8 A	6.0 A
– 24 V _{DC} :	1.9 A	3.0 A	3.0 A
– 120 V _{AC} :	—	—	1.3 to 0.7 A
Cooling capacity:	+10 °C to –18 °C (+50 °F to 0 °F)		
Dimensions (WxHxD) in mm:	465x414x300	550x425x260	580x385x360
Weight:	11.5 kg	12 kg	15 kg
	CF-40	CF-50	CF-60
Overall capacity:	37 litres	49 litres	59 litres
Connection voltage:	12/24 V _{DC} and 120 V _{AC}		
Rated current:			
– 12 V _{DC} :	6.0 A	7.0 A	7.0 A
– 24 V _{DC} :	3.0 A	3.0 A	3.0 A
– 120 V _{AC} :	1.3 to 0.7 A	1.3 to 0.7 A	1.3 to 0.7 A
Cooling capacity:	+10 °C to –18 °C (+50 °F to 0 °F)		
Dimensions (WxHxD) in mm:	580x445x360	630x480x360	630x582x360
Weight:	16 kg	18 kg	21.6 kg



Note

If the ambient temperature is above +32°C (+90 °F), the minimum temperature cannot be attained.





Technical data

 **Dometic CoolFreeze**



Test/certificates:



– 73/23/EEC – Low Voltage Electrical Equipment Directive

– 89/336/EEC – EMC Directive

– 95/54/EEC



Versions, technical modifications and delivery options reserved.
This device is CFC-free. The coolant circuit contains R134a.





When ordering parts, always state:
MODEL NO. - QUANTITY -
PART NUMBER - DESCRIPTION

USA
SERVICE OFFICE
Dometic, Corporation
2320 Industrial Parkway
Elkhart, IN 46516

CANADA
Dometic, Corporation
46 Zatonski, Unit 3
Brantford, ON N3T 5L8
CANADA

**For Service Center
and Dealer Locations
Please Visit:**
www.eDometic.com

MODEL:	DESCRIPTION:
CF-018DC	COOLFREEZE CF-18
CF-025DC	COOLFREEZE CF-25
CF-035AC110	COOLFREEZE CF-35-AC120-U
CF-035DC	COOLFREEZE CF-35-DC
CF-040AC110	COOLFREEZE CF-40-AC120-U
CF-050AC110	COOLFREEZE CF-50-AC120-U
CF-050DC	COOLFREEZE CF-50-DC
CF-080AC110	COOLFREEZE CF-80-AC120-U
CF-110AC110	COOLFREEZE CF-110-AC120-U

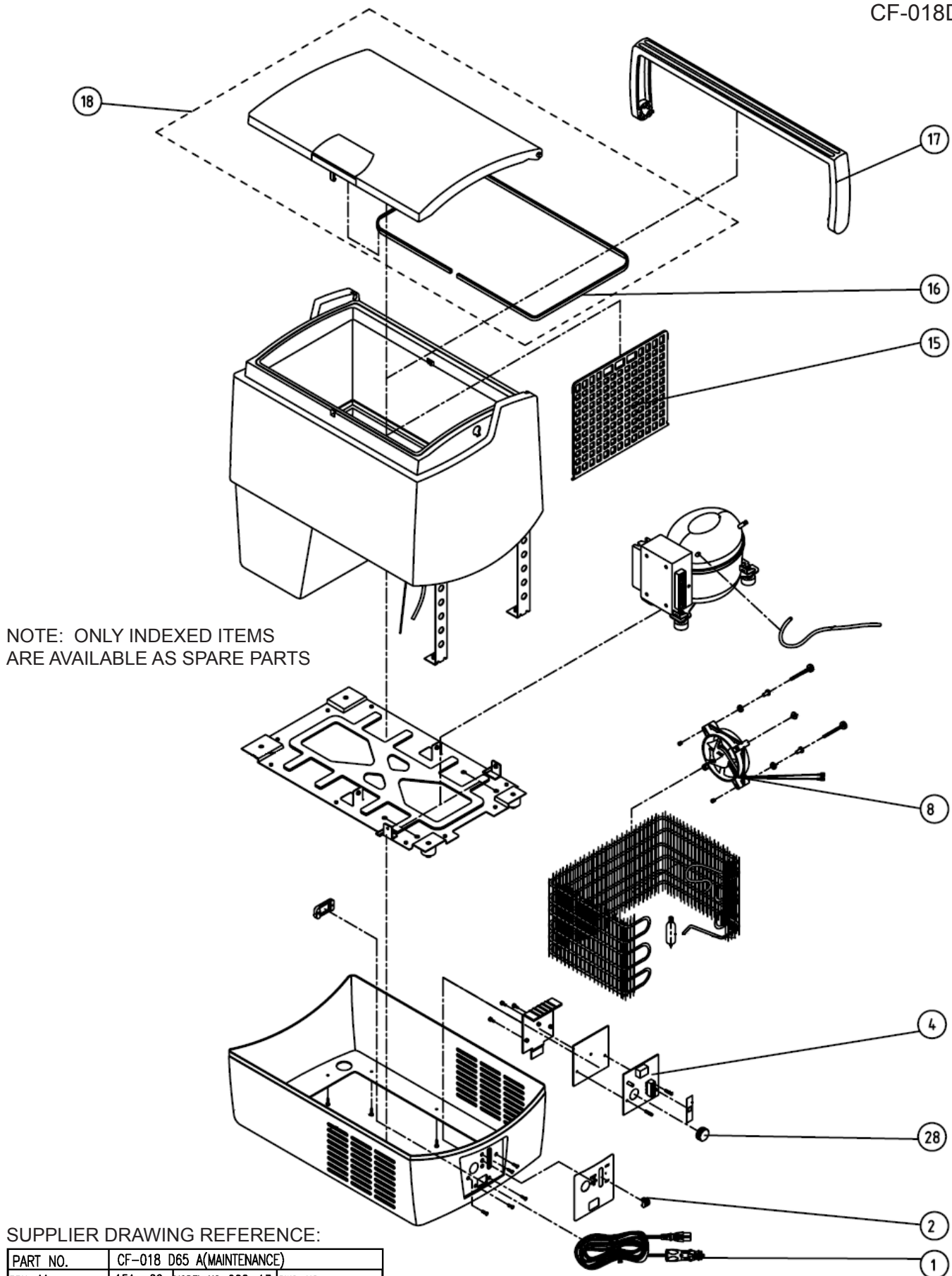
INDEX

PAGE:	MODELS:
2-3	CF-018DC
4-5	CF-025DC
6-7	CF-035AC110, CF-040AC110
8-9	CF-035DC
10-11	CF-050AC110
12-13	CF-050DC
14-15	CF-080AC110, CF-110AC110
16	REFERENCE PHOTOGRAPHS

PARTS LIST

**CF-XXXDC
CF-XXXAC110**

CF-018DC



CF-018DC

CF-018DC

Index	Part Number	Description
1	80-T2-2000AI1	DC CORD, CF-18/80/110
2	40-72-14AB8G	SWITCH, CONTROL CF-18
4	SP022MAINPCBASF	MAIN PCB, CF-18
	<i>fits serial numbers:</i>	<i>05000241-05000300,*</i> <i>MB81500001-MB91200045 & higher</i>
8	11-00-925L12S	FAN, CF-18
15	40-022-05PP90	DIVIDER, CF-18
16	42-01-11057048	GASKET, LID CF-18
17	SP022HANDLEASA	HANDLE, CF-18
18	SP022COVERAS1	LID ASM, CF-18
28	40-022-11AB8G	KNOB, CONTROL CF-18

* WAECO branded units.

CF-025DC



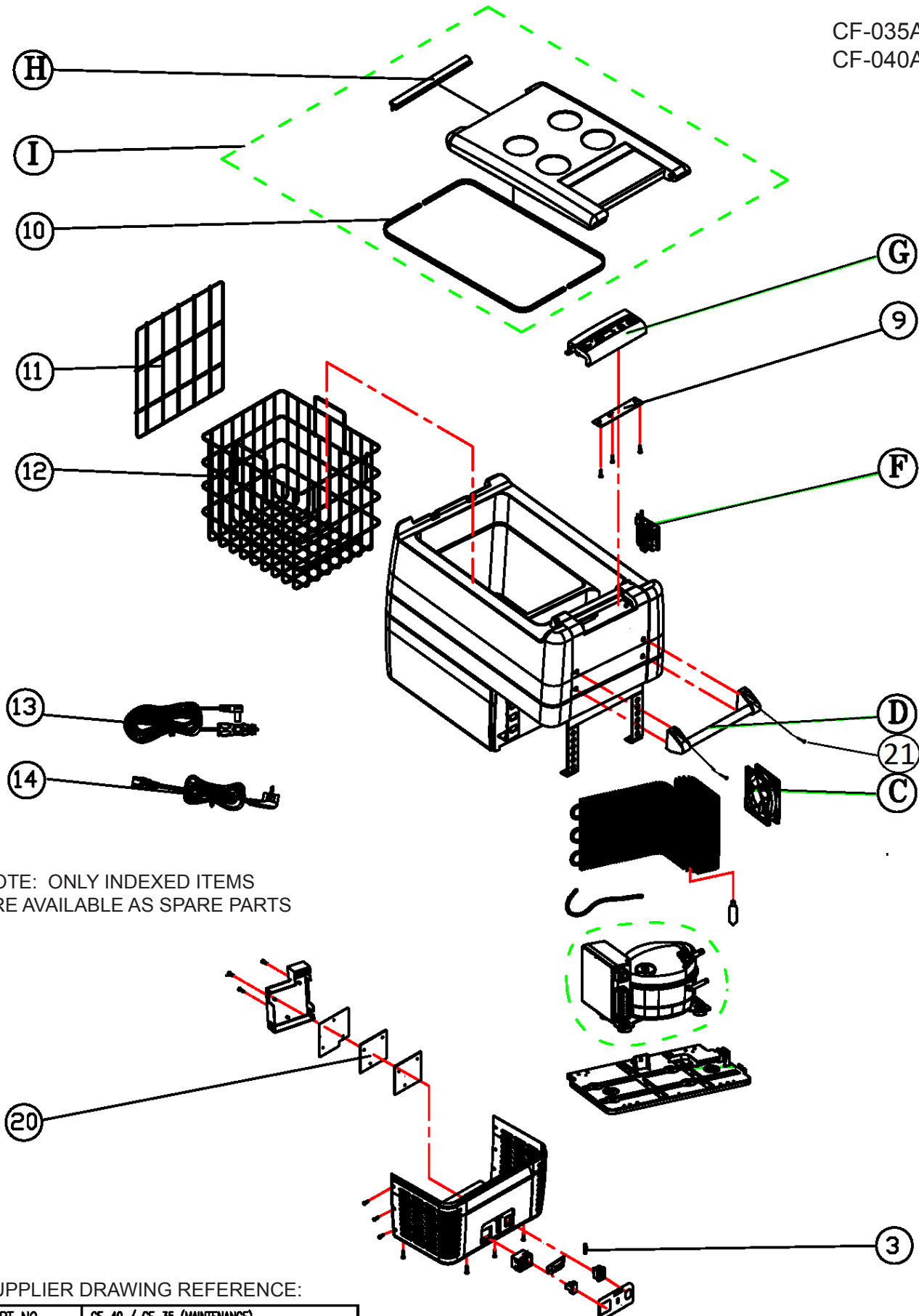
SUPPLIER DRAWING REFERENCE:

PART NO.	CF-25DC D65A(MAINTENANCE)		
DRN Lin	15/04/08	MODEL NO. CF-25	DWG. NO.018-13065A-W
MOBICOOL INTERNATIONAL LTD.			REV. 01

CF-025DC

Index	Part Number	Description
1	80-T2-2000AG1	DC CORD, CF-25/35/40/50
2	SP005DISPCBASD	DISPLAY PCB CF-25DC
9	81-01-980LGT	LIGHT ASM, CF-25/50DC
12	42-01-06355055	GASKET, LID CF-25
13	46-018-07TSW	BASKET, CF-25
17	018FANASA	FAN ASM, CF-25
18	SP018MAINPCBASD	MAIN PCB, CF-25
	<i>fits serial numbers:</i>	<i>MB81500001-MB81500095</i>
	SP018MAINPCBASE	MAIN PCB POWER INPUT CF-25DC
	<i>fits serial numbers:</i>	<i>MB91000001-MB91200050 & higher</i>
20	SP018LIDW40A	LID ASM, CF-25
22	018PCBCOVERASC	PCB COVER ASM, CF-25
23	SP018LOCKINGASA	LATCH ASM, CF-25

CF-035AC110
CF-040AC110



NOTE: ONLY INDEXED ITEMS
ARE AVAILABLE AS SPARE PARTS

SUPPLIER DRAWING REFERENCE:

PART NO.	CF-40 / CF-35 (MAINTENANCE)		
DRN Z.G.H	02APR04	MODEL NO. 026	DWG. NO.026-D65A
MOBICOOL INTERNATIONAL LTD.			REV. 01

CF-035AC110
CF-040AC110

CF-035AC110 = A

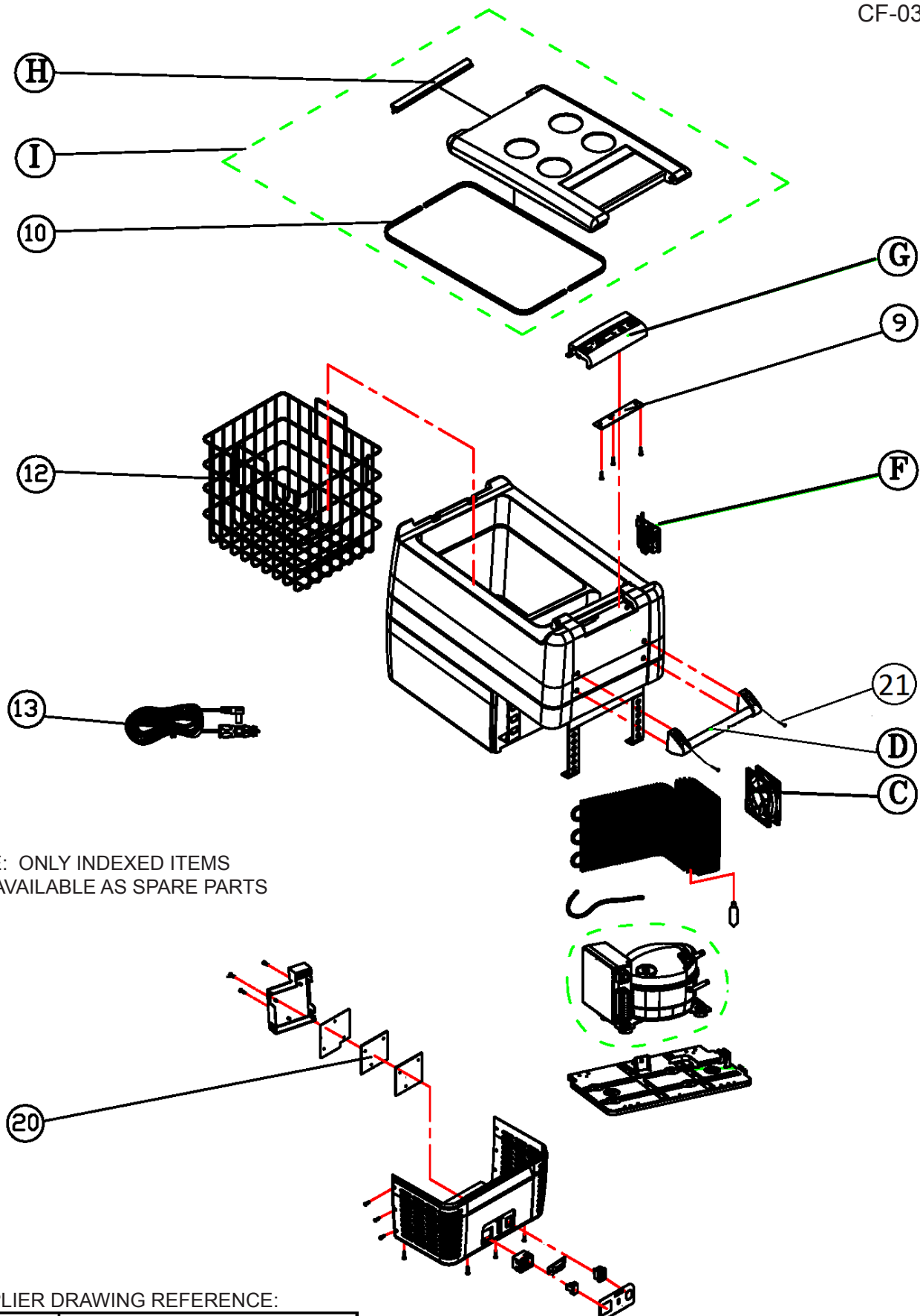
CF-040AC110 = B

Index	Part Number	Model		Description
C	SP005FANASA	A	B	FAN ASM, CF-35/40/50
D	SP026HANDLEASA	A	B	HANDLE ASM, CF-35/40
F	81-01-026LGT1	A	B	LIGHT ASM, CF-35/40
G	026PCBCOVERASC	A	B	PCB COVER ASM, CF-35/40/50
H	SP026LOCKINGASA	A	B	LATCH ASM, CF-35/40
I	SP026LIDASC	A	B	LID ASM, CF-35/40
3	15-25-F4A5X20	A	B	FUSE, CF-35-110AC
9	02-00-005221	A	B	PCB DISPLAY, CF-35/40/50/80/110
	<i>fits serial numbers:</i>			<i>04000001-05001200 *</i>
	SP005DISPCBASG	A	--	PCB DISPLAY, CF-35/40/50
	<i>fits serial numbers:</i>			<i>MB81500001-MB91200040</i>
	SP005DISPCBASH	A	--	DISPLAY PCB CF35-110
	<i>fits serial numbers:</i>			<i>MB92400001-MB92400025</i>
	SP026DISPCBASB	A	--	PCB DISPLAY, CF-35/40
	<i>fits serial numbers:</i>			<i>MB93500001-MB95100290</i>
				<i>MB00200001-MB01100185 & higher</i>
	(same p/n as above)	--	B	(same description as above)
	<i>fits serial numbers:</i>			<i>MB92800001-MB95100030</i>
				<i>MB01100001-MB01500040 & higher</i>
10	42-01-06955055	A	B	GASKET, LID CF-35/40
11	46-026-06TSW	--	B	DIVIDER, BASKET CF-40
12	46-026-04TSW	--	B	BASKET, CF-40
12	46-026-05TSW	A	--	BASKET, CF-35
13	80-T2-2000AG1	A	B	DC CORD, CF-25/35/40/50
14	38-UL-2000B6	A	B	AC CORD, CF-35/40/50/80/110
20	SP005MAINPCBASA **	A	B	MAIN PCB, DC/AC, CF-35/40/50
	<i>fits serial numbers:</i>			<i>04000001-05001200 *</i>
	SP005MAINPCBASI **	A	--	MAIN PCB POWER INPUT CF25-110
	<i>fits serial numbers:</i>			<i>MB81500001-MB91200040 & higher</i>
	(same p/n as above)	--	B	(same description as above)
	<i>fits serial numbers:</i>			<i>MB92800001-MB95100030</i>
				<i>MB01100001-MB01500040 & higher</i>
21	47-BX-M6020HB	A	B	HANDLE ASM SCREW (1 PC)

* WAECO branded units.

** See page 16 for pictures.

CF-035DC



NOTE: ONLY INDEXED ITEMS
ARE AVAILABLE AS SPARE PARTS

SUPPLIER DRAWING REFERENCE:

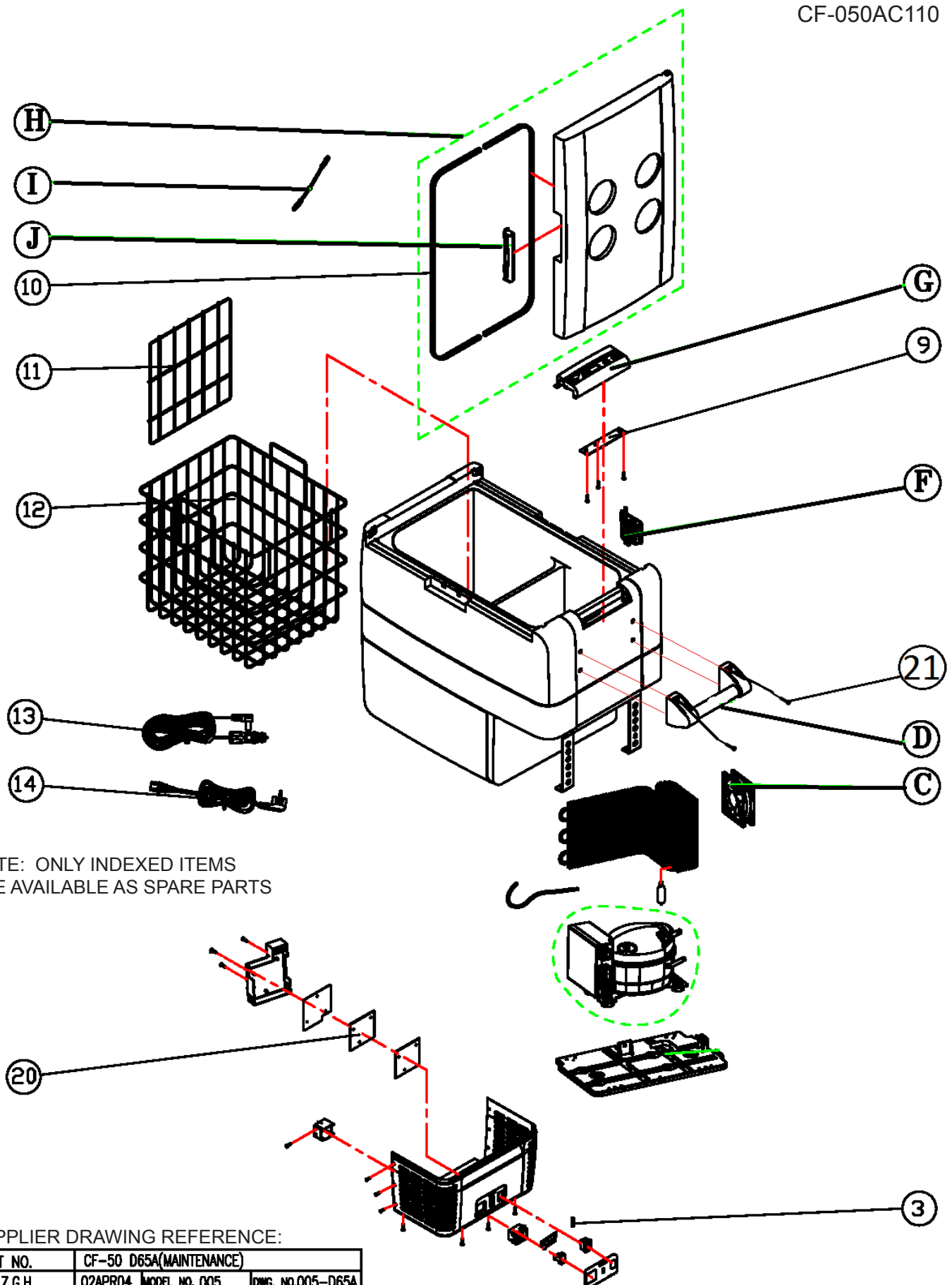
PART NO.	CF-40 / CF-35 (MAINTENANCE)		
DRN Z.G.H	02APR04	MODEL NO. 026	DWG. NO.026-D65A
MOBICOOL INTERNATIONAL LTD.			REV. 01

CF-035DC

CF-035DC

Index	Part Number	Description
C	SP005FANASA	FAN ASM, CF-35/40/50
D	SP026HANDLEASA	HANDLE ASM, CF-35/40/50
F	81-01-026LGT	LIGHT ASM, CF-35DC
G	026PCBCOVERASC	PCB COVER ASM, CF-35/40/50
H	SP026LOCKINGASA	LATCH ASM, CF-35/40
I	SP026LIDASC	LID ASM, CF-35/40
9	SP005DISPCBASD	DISPLAY PCB CF-25/35/40/50DC
10	42-01-06955055	GASKET, LID CF-35/40
12	46-026-05TSW	BASKET, CF-35
13	80-T2-2000AG1	DC CORD, CF-25/35/40/50
20	SP005MAINPCBASJ	MAIN PCB, DC ONLY, CF-35/50
21	47-BX-M6020HB	HANDLE ASM SCREW (1PC)

CF-050AC110



CF-050AC110

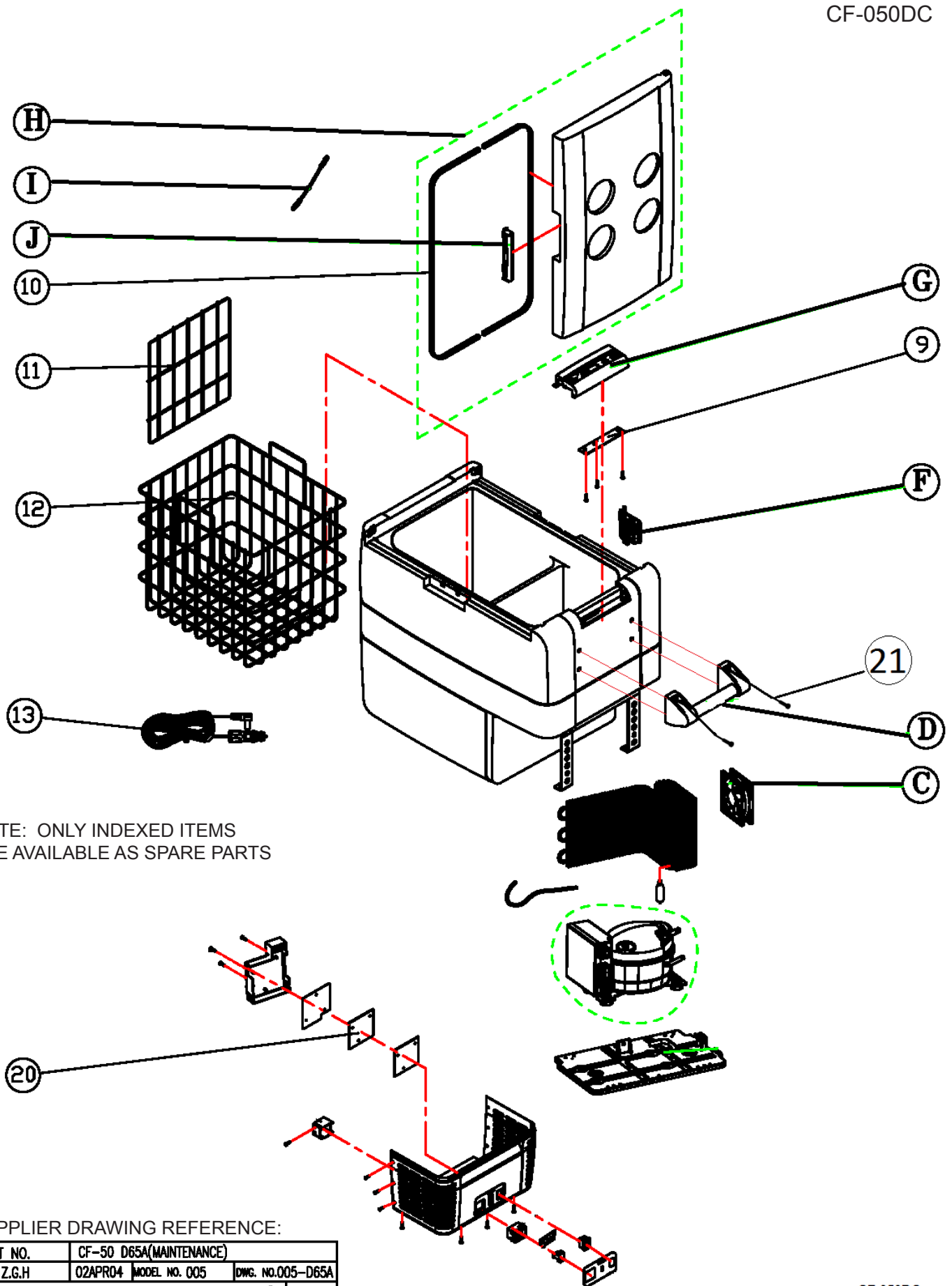
CF-050AC110

Index	Part Number	Description
C	SP005FANASA	FAN ASM, CF-35/40/50
D	SP005HANDLEASA	HANDLE ASM, CF-50
F	81-01-028LGT	LIGHT ASM, CF-50/80/110
G	005PCBCOVERASC	PCB COVER ASM, CF-50
H	SP005COVERASC	LID ASM, CF-50
I	SP005NYLONASA	NYLON LINE ASM, CF-50
J	SP005BUCKLEASA	LATCH ASM, CF-50
3	15-25-F4A5X20	FUSE, CF-35/40/50
9	02-00-005221	PCB DISPLAY,CF-35/40/50/80/110
	<i>fits serial numbers:</i>	<i>04000001-05001087 *</i>
	SP005DISPCBASG	PCB DISPLAY, CF-35/40/50
	<i>fits serial numbers:</i>	<i>MB81500196-MB91000200</i>
	SP005DISPCBASH	DISPLAY PCB CF35-110
	<i>fits serial numbers:</i>	<i>MB92600001-MB93900235</i>
		<i>MB01300001-MB01500030 & higher</i>
10	42-01-07855055	GASKET, LID CF-50
11	46-051-04TSW02	DIVIDER, BASKET CF-50
12	46-005-04TSW01	BASKET, CF-50
13	80-T2-2000AG1	DC CORD, CF-25/35/40/50
14	38-UL-2000B6	AC CORD, CF-35/40/50/80/110
20	SP005MAINPCBASA	MAIN PCB, DC/AC, CF-35/40/50
	<i>fits serial numbers:</i>	<i>04000001-05001087 *</i>
	SP005MAINPCBASI **	MAIN PCB POWER INPUT CF25-110
	<i>fits serial numbers:</i>	<i>MB81500196-MB93900235</i>
		<i>MB01300001-MB01500030 & higher</i>
21	47-BX-M6020HB	HANDLE ASM SCREW (1PC)

* WAECO branded units.

** See page 16 for picture.

CF-050DC



CF-050DC

CF-050DC

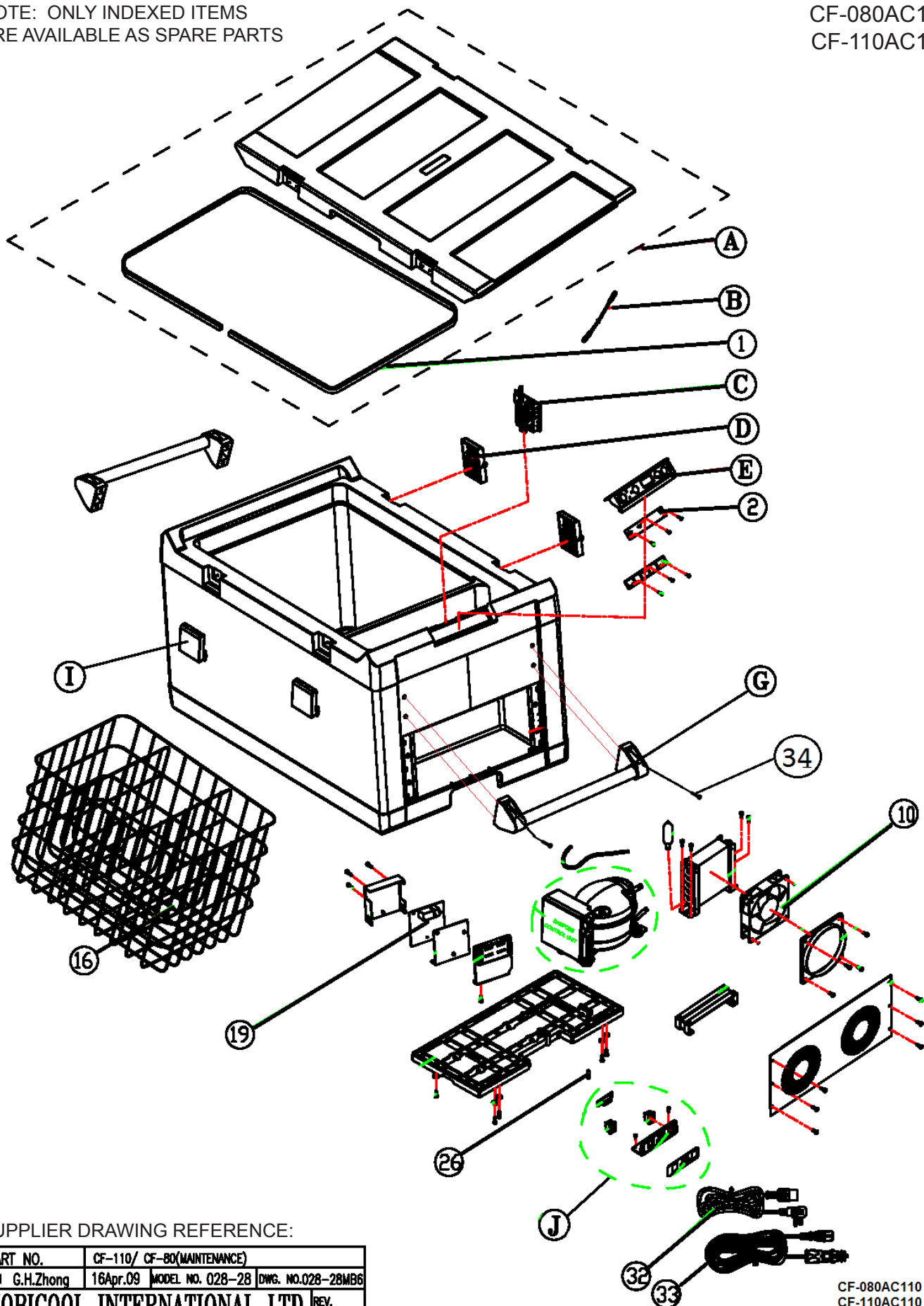
Index	Part Number	Description
C	SP005FANASA	FAN ASM, CF-35/40/50
D	SP005HANDLEASA	HANDLE ASM, CF-50
F	81-01-980LGT	LIGHT ASM, CF-25/50DC
G	005PCBCOVERASC	PCB COVER ASM, CF-50DC
H	SP005COVERASC	LID ASM, CF-50
I	SP005NYLONASA	NYLON LINE ASM, CF-50
J	SP005BUCKLEASA	LATCH ASM, CF-50
9	02-00-005221	PCB DISPLAY, CF-35/40/50/80/110
	<i>fits serial numbers:</i>	<i>04000821-05001543 *</i>
	SP005DISPCBASD	DISPLAY PCB CF-25/35/40/50DC
	<i>fits serial numbers:</i>	<i>MB81500001-MB91200085 & higher</i>
10	42-01-07855055	GASKET, LID CF-50
11	46-051-04TSW02	DIVIDER, BASKET CF-50
12	46-005-04TSW01	BASKET, CF-50
13	80-T2-2000AG1	DC CORD, CF-25/35/40/50
20	SP005MAINPCBASB	MAIN PCB, DC ONLY CF-50
	<i>fits serial numbers:</i>	<i>04000821-05001543 *</i>
	SP005MAINPCBASH **	MAIN PCB, DC ONLY, CF-50
	<i>fits serial numbers:</i>	<i>MB81500001-MB84600020</i>
	SP005MAINPCBASJ	MAIN PCB, DC ONLY, CF-50
	<i>fits serial numbers:</i>	<i>MB91000001-MB91200085 & higher</i>
21	47-BX-M6020HB	HANDLE ASM SCREW (1PC)

* WAECO branded units.

** See page 16 for picture.

NOTE: ONLY INDEXED ITEMS
ARE AVAILABLE AS SPARE PARTS

CF-080AC110
CF-110AC110



SUPPLIER DRAWING REFERENCE:

PART NO.	CF-110/ CF-80(MAINTENANCE)
DRN	G.H.Zhong
16Apr.09	MODEL NO. 028-28
DWG. NO.028-28MB6	
MOBICOOL INTERNATIONAL LTD.	
	REV. 00

CF-080AC110
CF-110AC110

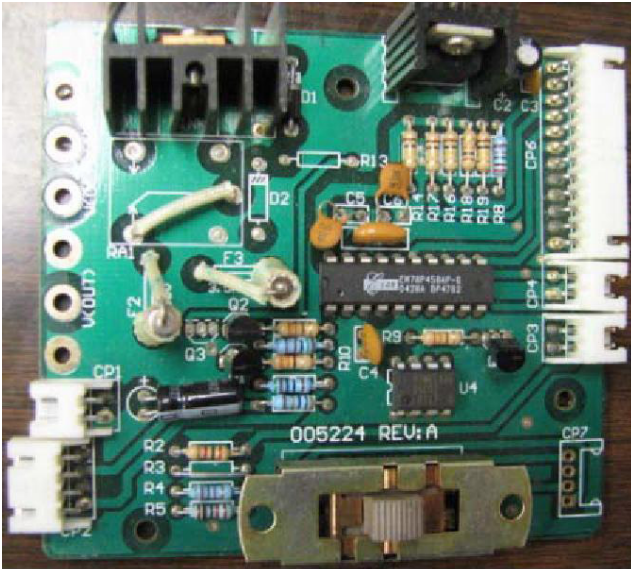
CF-080AC110 = A

CF-110AC110 = B

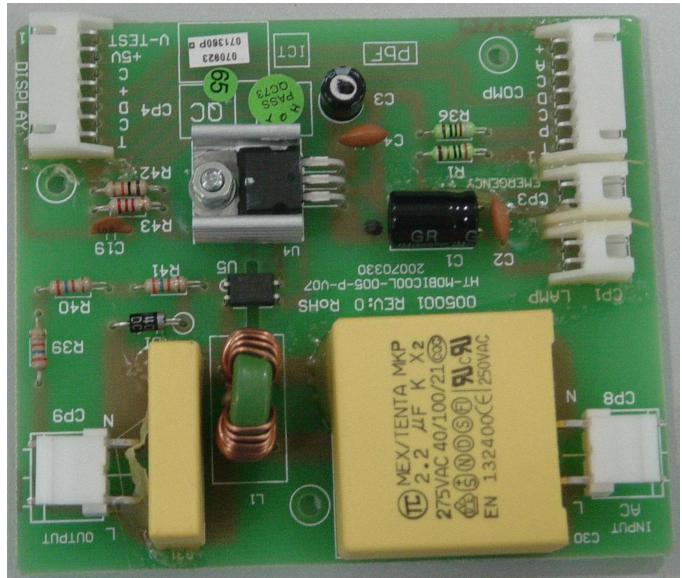
Index	Part Number	Model		Description
A	SP028COVERD65A	A	B	LID ASM, CF-80/110
B	SP028NYLONASA	A	B	NYLON LINE ASM, CF-80/110
C	81-01-028LGT	A	B	LIGHT ASM, CF-50/80/110
D	SP028HINGEASA	A	B	HINGE ASM, CF-80/110
E	028PCBCOVERASC	A	B	PCB COVER ASM, CF-80/110
G	SP028HANDLEASA	A	B	HANDLE ASM, CF-80/110
I	SP028LOCKASA	A	B	LATCH ASM, CF-80/110
J	028SOCKETASG	A	--	SOCKET ASM, CF-80
	028SOCKETASH	--	B	SOCKET ASM, CF-110
1	41-04-028GS0101	A	B	GASKET, LID CF-80/110
2	02-00-005221	A	B	PCB DISPLAY,CF-35/40/50/80/110
	<i>fits serial numbers:</i>			<i>04000141-05001543 *</i>
	SP005DISPCBASE **	A	B	PCB DISPLAY,CF-80/110
	<i>fits serial numbers:</i>			<i>MB81500001-MB81500130</i>
	SP005DISPCBASG	A	B	PCB DISPLAY,CF-80/110
	<i>fits serial numbers:</i>			<i>MB81500131-MB91200080</i>
	SP005DISPCBASH	A	--	DISPLAY PCB CF35-110
	<i>fits serial numbers:</i>			<i>MB92400001-MB95300225</i>
				<i>...MB01100001-MB01100085 & higher</i>
	(same p/n as above)	--	B	(same description as above)
	<i>fits serial numbers:</i>			<i>MB92600001-MB93000030</i>
				<i>MB00800001-MB01500020 & higher</i>
10	11-00-D12SM12	A	B	FAN, CF-80/110, CR-80/110
16	46-028-32TSW	A	--	BASKET, CF-80
	46-028-33TSW	--	B	BASKET, CF-110
19	SP028MAINPCBASA **	A	B	MAIN PCB, DC/AC, CF-80/110
	<i>fits serial numbers:</i>			<i>05000851-05001170 *</i>
	SP005MAINPCBASI **	A	--	MAIN PCB POWER INPUT CF25-110
	<i>fits serial numbers:</i>			<i>MB81500001-MB95300225</i>
				<i>MB01100001-MB01100085 & higher</i>
	(same p/n as above)	--	B	(same description as above)
	<i>fits serial numbers:</i>			<i>MB81500001-MB93000030</i>
				<i>MB00800001-MB01500020 & higher</i>
32	38-UL-2000B6	A	B	AC CORD, CF-35/40/50/80/110
33	80-T2-2000A11	A	B	DC CORD, CF-18/80/110
34	47-BX-M6020HB	A	B	HANDLE ASM SCREW (1PC)

* WAECO branded units.

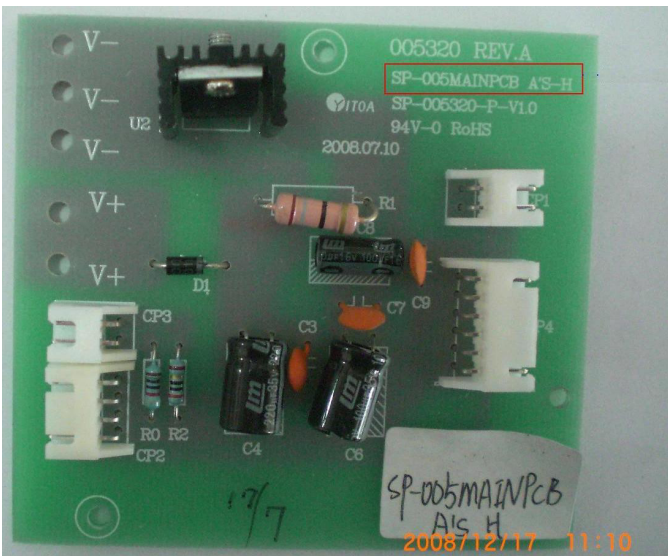
** See page 16 for pictures.



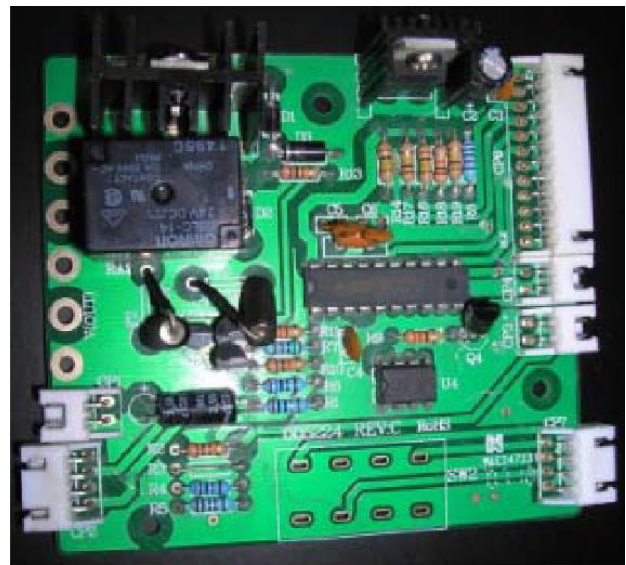
SP005MAINPCBASA



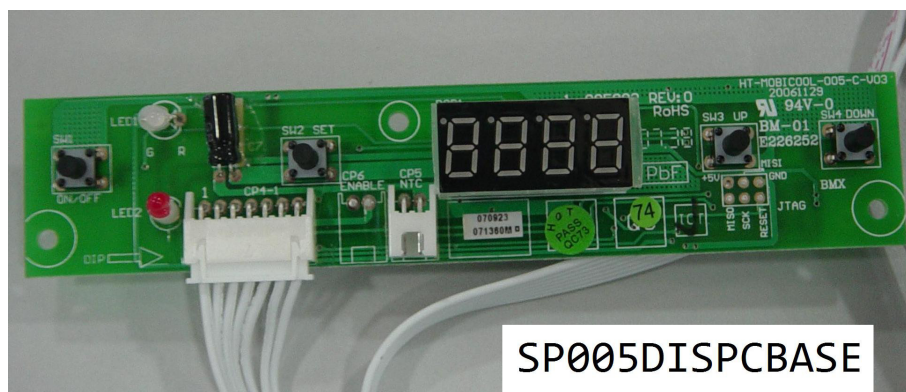
SP005MAINPCBASI



SP005MAINPCBASH



SP028MAINPCBASA



SP005DISPCBASE