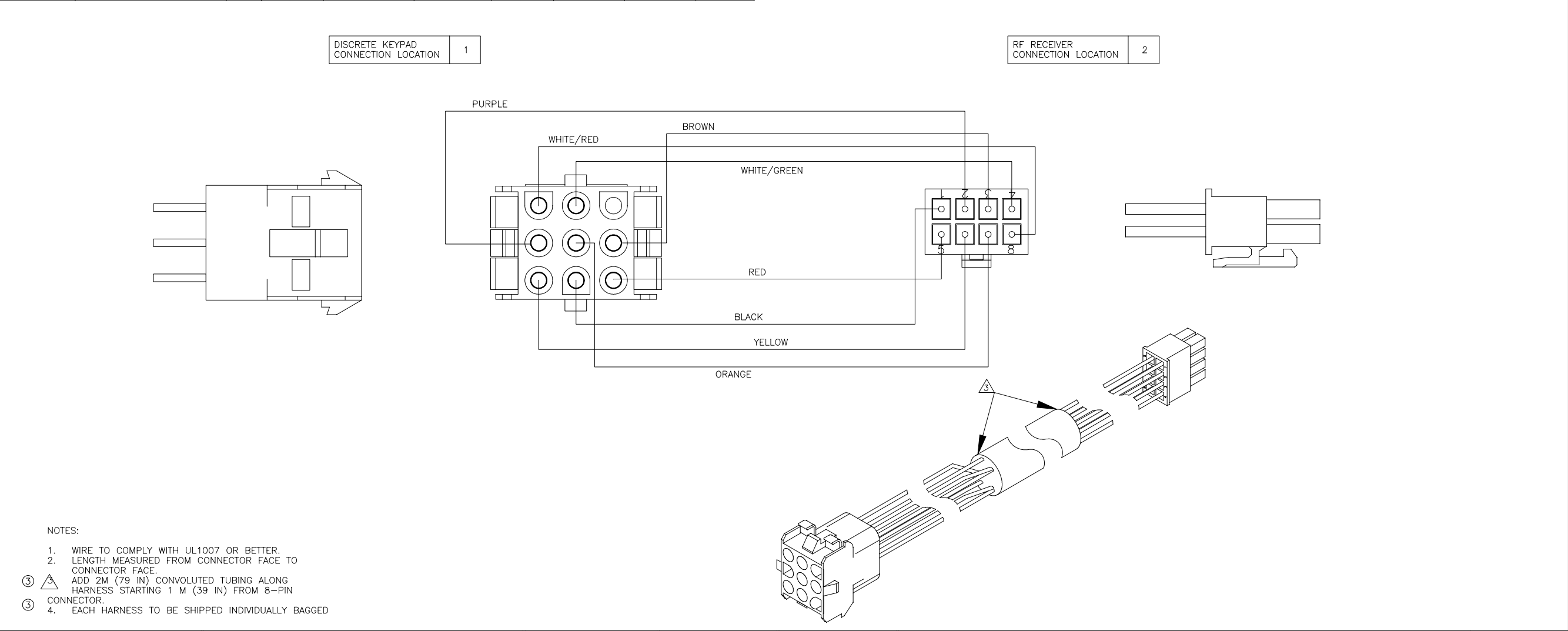


ITEM #	QTY	NEWMAR #	DESCRIPTION
1	1	117806	DOORBELL HARNESS

COLOR	FUNCTION	GAUGE	LOCATION	CONNECTOR	TERMINAL	LOCATION	CONNECTOR	TERMINAL	LENGTH ±25MM
—	—	18	C1/P1	②④		—	—	—	②③
WHITE/GREEN	LOCK ALL=INPUT		C1/P2			C2/P4	②④	②④	
WHITE/RED	UNLOCK ENTRY DOOR=INPUT		C1/P3			C2/P8			
BROWN	UNLOCK BANK 1=INPUT		C1/P4			C2/P3	AMP 794954-8 MOLEX 39-01-2080	AMP 794956-3 MOLEX 39-00-0059	
ORANGE	UNLOCK BANK 2=INPUT		C1/P5			C2/P7			
PURPLE	LIGHTS, TIMED=INPUT		C1/P6			C2/P2			
RED	SYSTEM POWER		C1/P7			C2/P5			
BLACK	SYSTEM GROUND		C1/P8			C2/P1			
YELLOW	LEARN MODE=(GND)		C1/P9			C2/P6	④		

REVISION	ECN	ECN BY	DESCRIPTION
A	PRE- RELEASE	ALP 4/23/07	RELEASE FOR QUOTE
1	RLSE	MEP 6/26/07	RELEASE FOR PRODUCTION
2	07584	MEP 6/26/07	8.0M WAS 7.17M. MOLEX TERMINAL & CONNECTORS WERE AMP.
3	10070	MEP 6/26/07	ATTACHED CONNECTOR TO HARNESS. ADDED: CONVOLUTED TUBING, LENGTH 6.0M WAS 8.0M. REVISED: NOTES 3,4.
4	17821	MEP 6/26/07	ADDED: AMP EQUIV. CONNECTOR AND TERMINAL NUMBERS.



NEWMAR CORP <i>P.O. Box 30, Nappanee, IN. 46550</i>	Model:	Sheet	Drawn by:	Checked by:	Revision:	By:
	MA/EX/KG	1 OF 1	N. G.			Date:
	Title:	I.D. # ELECT	Date:	Date:	Revision:	By:
	DOORBELL HARNESS	RICAL\HARNESSES\MISC\117806_DR_BLL	6/23/11			Date: