

Product Features

- Undermount installation.
- One bowl.
- 1135 Drain fittings are included.
- 25 1/4" x 19 1/4"
- Depth: 8".
- Bowl: 23" x 17" x 8".
- Stainless Steel
- Silk
- 20 Gauge, 1810 stainless steel.
- Fully undercoated.
- Factory applied rim seal.
- Fits 33" cabinets.
- Weight: 17 (lbs.)
- Bowl Dim. - 23" x 17"
- Width - 19-1/4"

Product Specifications

Width	19-1/4"
Length	25-1/4"
Material	Stainless Steel
Color / Finish	Satin Finish
Faucet Hole Count	0
Installation	Undermount
Depth	8"
Special Features	n/a
Stainless Steel Gauge	20
Reveal	No, Hidden Rim
Other Details	n/a
Condition	New
Mfg Warranty	Yes
Length Range	20.01" - 26"
Sink Mounting System	Standard
Stainless Steel Type	304

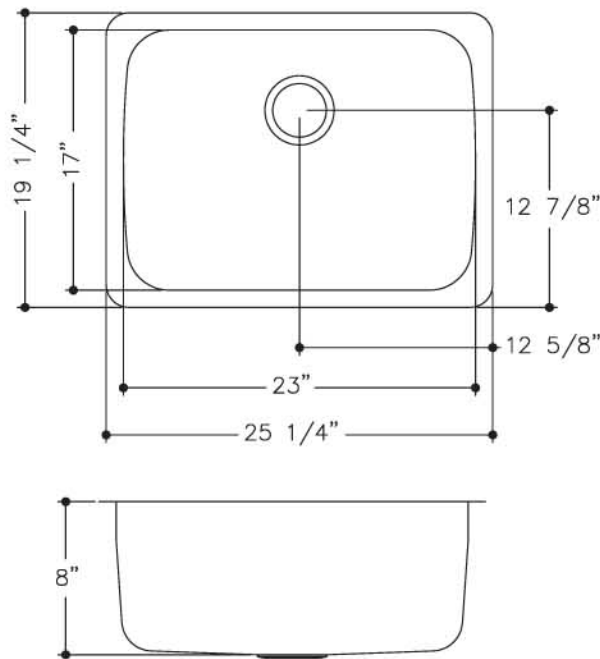
- 18-10 Stainless Steel
- Fully Undercoated
- Limited Lifetime Buyer Warranty



Fits 27" Cabinet

Model #	Faucet Holes	Finish Deck/Bowl	Bowl Size ↕ × ↔	Sink Depth	Overall Dimension	Gauge	Cutout Dimension
US1925/80ML	NA	Mirror/Lustre	17" x 23"	8"	19 1/4" x 25 1/4"	20	Refer To Template*

*DXF files are available for use with CNC equipment. Visit our website.



JOB NAME: _____

DATE: _____

CUSTOMER: _____

MODEL SPECIFIED: _____

QUANTITY: _____

ARCHITECT/ENGINEER: _____

CONTRACTOR: _____