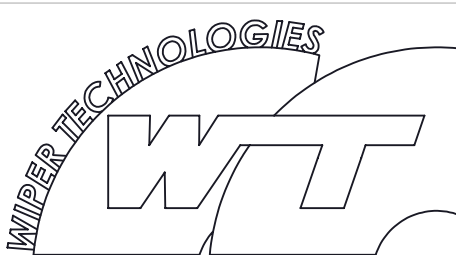
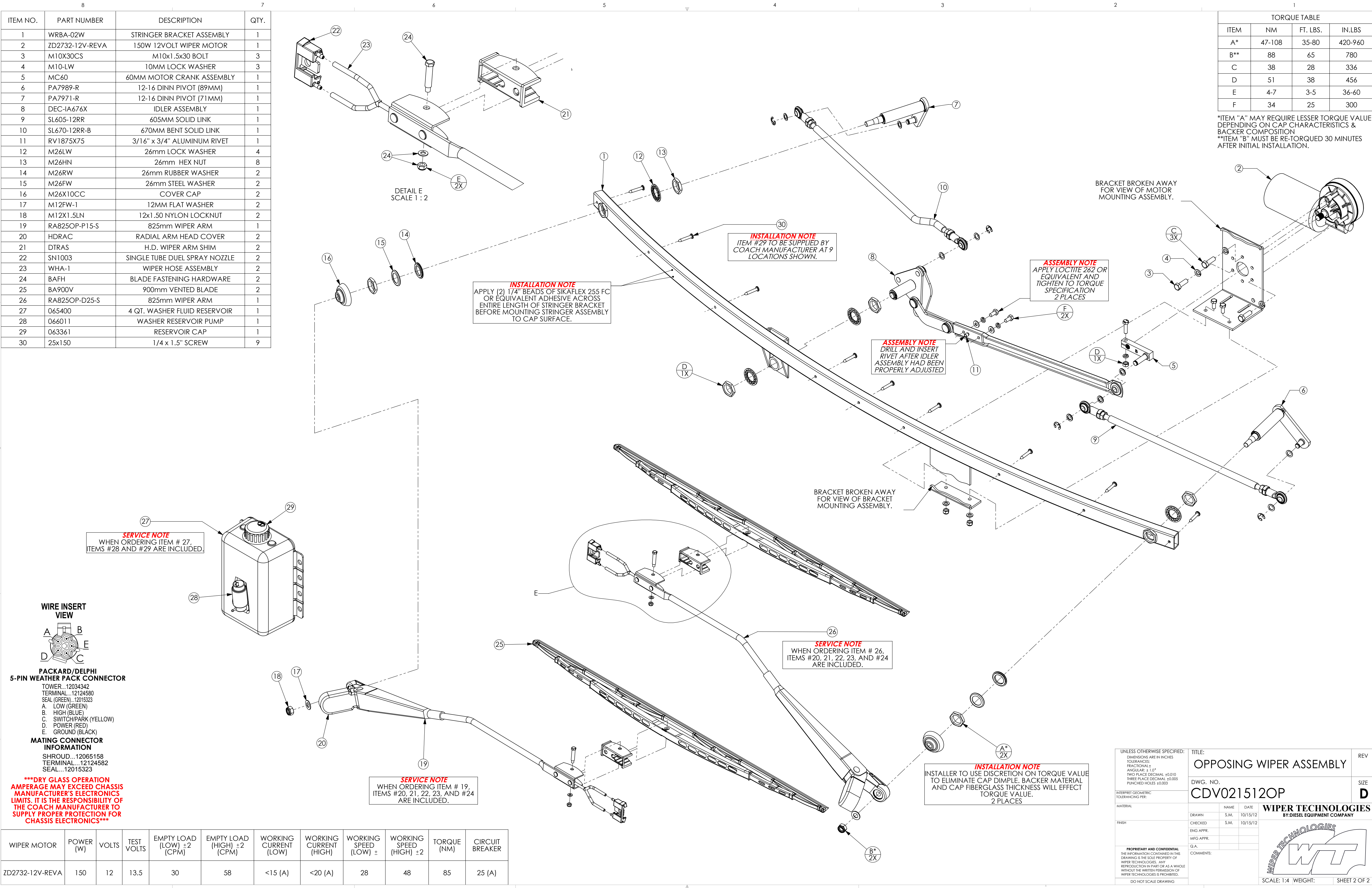


NOTES:  
1. HIDDEN LINES REMOVED FOR CLARITY.  
2. PIVOT HARDWARE NOT SHOWN FOR DIMENSIONING.

UNLESS OTHERWISE SPECIFIED: DIMENSIONS ARE IN INCHES TOLERANCES: FRACTIONAL ± ANGULAR: +1.0° TWO PLACE DECIMAL ±0.010 THREE PLACE DECIMAL ±0.005 PUNCHED HOLES ±0.005		TITLE: <b>OPPOSING WIPER ASSEMBLY</b>		REV
INTERPRET GEOMETRIC TOLERANCING PER:		DWG. NO. <b>CDV021512OP</b>		SIZE <b>D</b>
MATERIAL		NAME	DATE	<b>WIPER TECHNOLOGIES</b> BY:DIESEL EQUIPMENT COMPANY
FINISH		DRAWN	S.M. 10/15/12	
		CHECKED	S.M. 10/15/12	
		ENG APPR.		
<b>PROPRIETARY AND CONFIDENTIAL</b> THE INFORMATION CONTAINED IN THIS DRAWING IS THE SOLE PROPERTY OF WIPER TECHNOLOGIES. ANY REPRODUCTION IN PART OR AS A WHOLE WITHOUT THE WRITTEN PERMISSION OF WIPER TECHNOLOGIES IS PROHIBITED. DO NOT SCALE DRAWING		MFG APPR.		
		Q.A.		
		COMMENTS:		SCALE: 1:4 WEIGHT: SHEET 1 OF 2



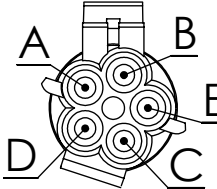
ITEM NO.	PART NUMBER	DESCRIPTION	QTY.
1	WRBA-02W	STRINGER BRACKET ASSEMBLY	1
2	ZD2732-12V-REVA	150W 12VOLT WIPER MOTOR	1
3	M10X30CS	M10x1.5x30 BOLT	3
4	M10-LW	10MM LOCK WASHER	3
5	MC60	60MM MOTOR CRANK ASSEMBLY	1
6	PA7989-R	12-16 DINN PIVOT (89MM)	1
7	PA7971-R	12-16 DINN PIVOT (71MM)	1
8	DEC-1A676X	IDLER ASSEMBLY	1
9	SL605-12RR	605MM SOLID LINK	1
10	SL670-12RR-B	670MM BENT SOLID LINK	1
11	RV1875X75	3/16" x 3/4" ALUMINUM RIVET	1
12	M26LW	26mm LOCK WASHER	4
13	M26HN	26mm HEX NUT	8
14	M26RW	26mm RUBBER WASHER	2
15	M26FW	26mm STEEL WASHER	2
16	M26X10CC	COVER CAP	2
17	M12FW-1	12MM FLAT WASHER	2
18	M12X1.5LN	12x1.50 NYLON LOCKNUT	2
19	RA825OP-P15-S	825mm WIPER ARM	1
20	HDRAC	RADIAL ARM HEAD COVER	2
21	DTRAS	H.D. WIPER ARM SHIM	2
22	SN1003	SINGLE TUBE DUEL SPRAY NOZZLE	2
23	WHA-1	WIPER HOSE ASSEMBLY	2
24	BAFH	BLADE FASTENING HARDWARE	2
25	BA900V	900mm VENTED BLADE	2
26	RA825OP-D25-S	825mm WIPER ARM	1
27	065400	4 QT. WASHER FLUID RESERVOIR	1
28	066011	WASHER RESERVOIR PUMP	1
29	063361	RESERVOIR CAP	1
30	25x150	1/4 x 1.5" SCREW	9



TORQUE TABLE			
ITEM	NM	FT. LBS.	IN.LBS
A*	47-108	35-80	420-960
B**	88	65	780
C	38	28	336
D	51	38	456
E	4-7	3-5	36-60
F	34	25	300

\*ITEM "A" MAY REQUIRE LESSER TORQUE VALUE DEPENDING ON CAP CHARACTERISTICS & BACKER COMPOSITION  
\*\*ITEM "B" MUST BE RE-TORQUED 30 MINUTES AFTER INITIAL INSTALLATION.

WIRE INSERT VIEW



PACKARD/DELPHI 5-PIN WEATHER PACK CONNECTOR


TOWER...12034342  
TERMINAL...12124580  
SEAL (GREEN)...12015323  
A. LOW (GREEN)  
B. HIGH (BLUE)  
C. SWITCH/PARK (YELLOW)  
D. POWER (RED)  
E. GROUND (BLACK)

MATING CONNECTOR INFORMATION

SHROUD...12065158  
TERMINAL...12124582  
SEAL...12015323

\*\*\*DRY GLASS OPERATION  
AMPERAGE MAY EXCEED CHASSIS  
MANUFACTURER'S ELECTRONICS  
LIMITS. IT IS THE RESPONSIBILITY OF  
THE COACH MANUFACTURER TO  
SUPPLY PROPER PROTECTION FOR  
CHASSIS ELECTRONICS\*\*\*

WIPER MOTOR	POWER (W)	VOLTS	TEST VOLTS	EMPTY LOAD (LOW) ±2 (CPM)	EMPTY LOAD (HIGH) ±2 (CPM)	WORKING CURRENT (LOW)	WORKING CURRENT (HIGH)	WORKING SPEED (LOW) ±	WORKING SPEED (HIGH) ±2	TORQUE (NM)	CIRCUIT BREAKER
ZD2732-12V-REVA	150	12	13.5	30	58	<15 (A)	<20 (A)	28	48	85	25 (A)

UNLESS OTHERWISE SPECIFIED: DIMENSIONS ARE IN INCHES TOLERANCES: FRACTIONAL: ± ANGULAR: +1.0° TWO PLACE DECIMAL: ±0.010 THREE PLACE DECIMAL: ±0.005 PUNCHED HOLES ±0.003		TITLE:  OPPOSING WIPER ASSEMBLY		REV	
INTERPRET GEOMETRIC TOLERANCING PER:		DWG. NO.  CDV021512OP		SIZE  D	
MATERIAL		NAME	DATE	<b>WIPER TECHNOLOGIES</b> BY:DIESEL EQUIPMENT COMPANY  	
		S.M.	10/15/12		
FINISH		CHECKED	S.M.		10/15/12
		ENG APPR.			
		MFG APPR.			
<b>PROPRIETARY AND CONFIDENTIAL</b> THE INFORMATION CONTAINED IN THIS DRAWING IS THE SOLE PROPERTY OF WIPER TECHNOLOGIES. ANY REPRODUCTION IN PART OR AS A WHOLE WITHOUT THE WRITTEN PERMISSION OF WIPER TECHNOLOGIES IS PROHIBITED.  DO NOT SCALE DRAWING		G.A.			
		COMMENTS:			
		SCALE: 1:4 WEIGHT: SHEET 2 OF 2			