

Year: 2016-2017
Make: Newmar
Model: Dutch Star
Last Update: 06-07-16

DIAMOND SHIELD
1278 LYELL AVE ROCHESTER, NY 14606
TOLL FREE: 888.806.5862
EMAIL: INFO@DIAMOND-SHIELD.COM
WEBSITE: DIAMOND-SHIELD.COM


Cut Date: _____
Cut By: _____
Kind of Film: _____

Please write legibly. Complete entire face sheet and double check any numbers copied down.

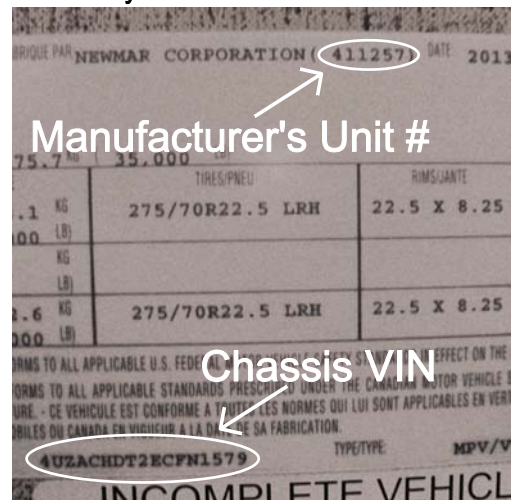
Installation Date: _____
Installer(s): _____
Location Of Installation: _____
Chassis VIN (Last 8): _____
Manufacturer's Unit #: _____

Lot #(s): _____

P.O. # (if needed): _____

ARE ALL PAINT IMPERFECTIONS AND POTENTIAL PROBLEMS
SHOWN BELOW ON PATTERN (Including Based Areas): Yes / No
Who Approved The Paint for Installation: _____
Was Diamond Placed in Recommend Location On Unit: Yes \ No
Were All Edges Heat Gunned and Re-Squeegeed: Yes \ No
Warranty and Product Care Should Be Placed In Cabinet Over The Sink
Was Warrantry Card Filled Out and Left In Unit: Yes \ No
Was Product Care Left In Unit: Yes \ No
Diamond placement indicated below by 

Chassis VIN And Unit # Located
On Wall By Driver's Seat Close To The Floor



Parts:
1. Header
2. Hood
3. PS Bumper Corner
4. DS Bumper Corner
5. Upper Center Bumper
6. Lower Center Bumper

7. PS Fog Light Trim (2pcs)
8. DS Fog Light Trim (2pcs)
9. Door Latch
10. Grab Handle

