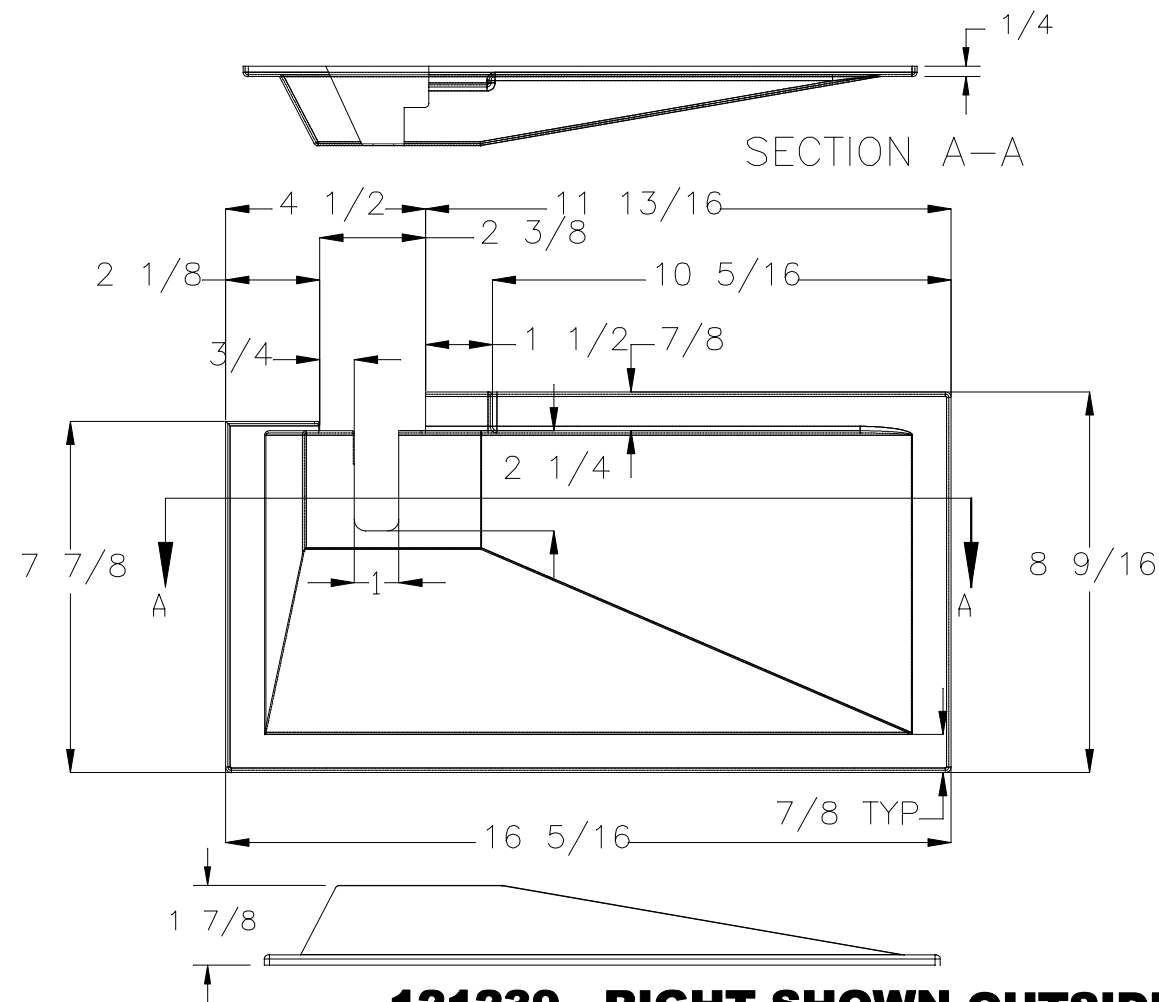
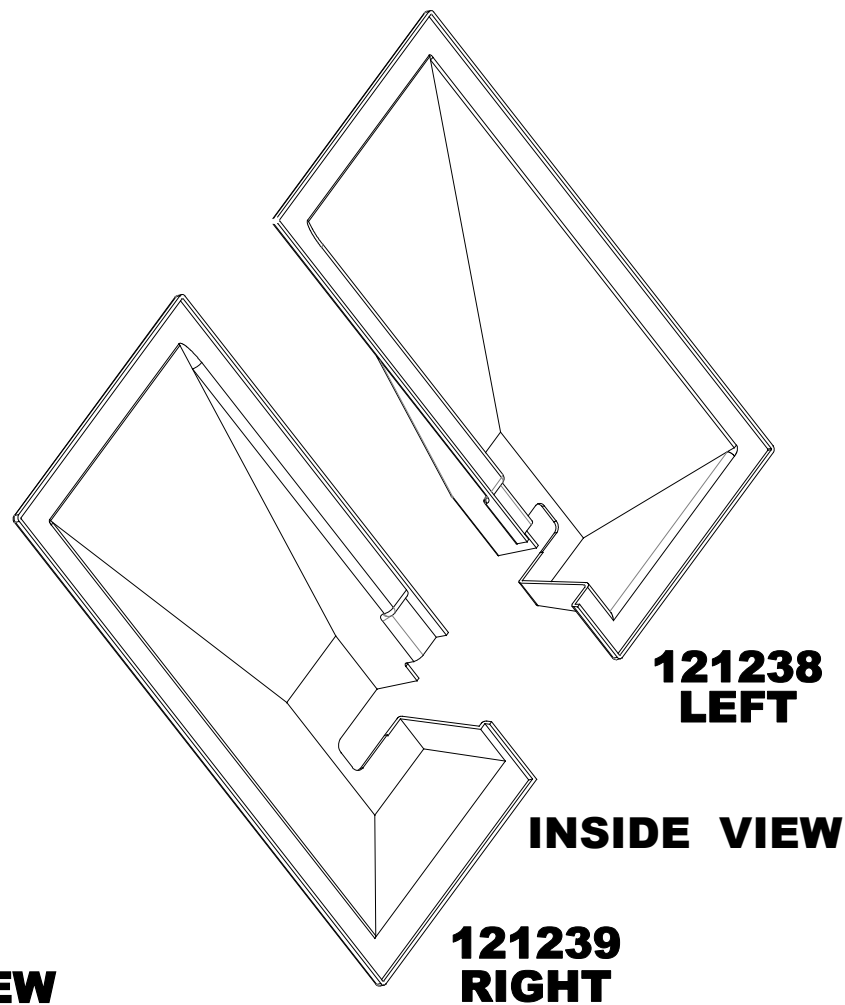


| ITEM # | QTY | NEWMAR # | DESCRIPTION |
|--------|-----|----------|---------------------------------|
| 1 | 1 | 121238 | POWER LOCK COVER, BLACK - LEFT |
| 2 | 1 | 121239 | POWER LOCK COVER, BLACK - RIGHT |



121239 - RIGHT SHOWN OUTSIDE VIEW



| | | | | | | | | | | |
|--|--------|-------------------------------|--------|--|-----------|---------|-------------|---------|---|--------------|
| NEWMAR CORP P.O. Box 30, Nappanee, IN. 46550 Title block--3125TB | Model: | (SEE INDEX) | Sheet | 1 OF 1 | Drawn by: | G. C. | Checked by: | D. K. | Revision: ADDED PART #'S AND CALL OUTS UNDER GEOMETRY TO CLARIFY WHICH PART IS LEFT AND RIGHT (PCR #155215) | By: D. K. |
| | Title: | BAGGAGE DOOR POWER LOCK COVER | I.D. # | 2014\HE\PROFILE\PARTS\POWER_LOCK_COVER | Date: | 9/20/13 | Date: | 10/8/13 | Revision: ADDED 'LEFT' AND 'RIGHT' DESCRIPTION TO PART NUMBERS | By: D. K. |
| | | | | | | | | | | Date: 6/4/14 |

NEW PRINT WITH NEW CORRECT P/N'S (PCR #141888)

G. C.
9/24/13