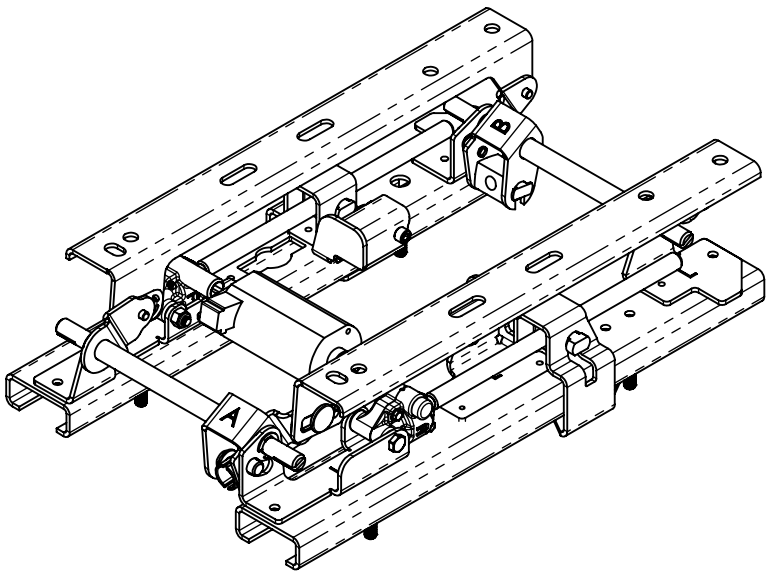
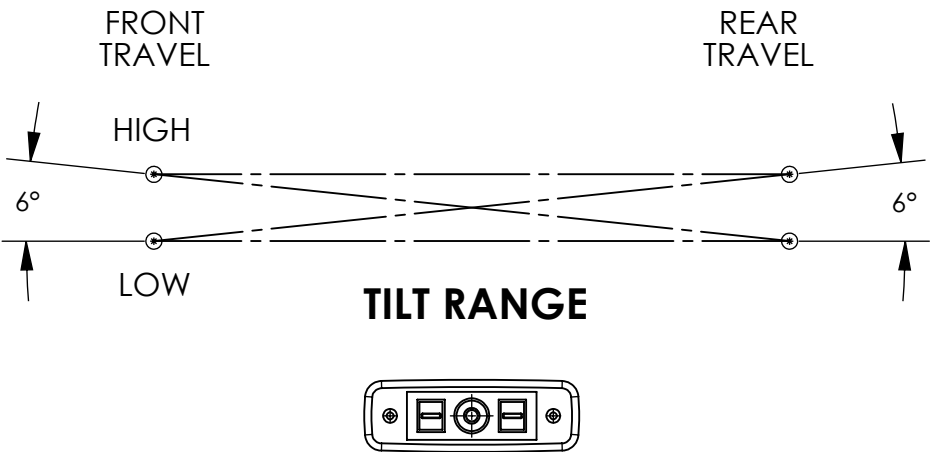
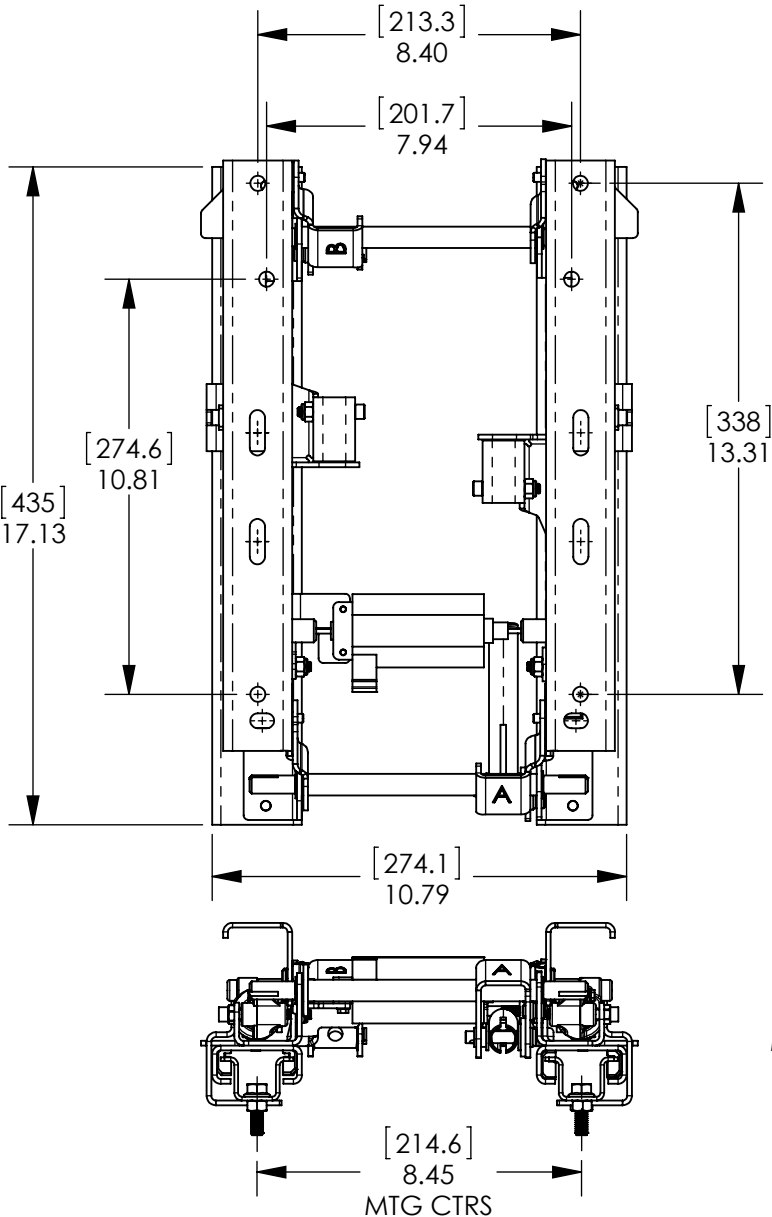
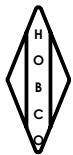


8	7	6	5	4	3	2	1
PART NUMBER	DESCRIPTION	POWER WIRE CONNECTORS	POWER WIRE TERMINALS	MOTOR WIRE CONNECTORS	MOTOR WIRE TERMINALS	SWITCH WIRE CONNECTORS	PART NUMBER
24000488NB	PLAIN FINISH, RH	DELPHI 8917548	DELPHI 12020338	SEBRO PLASTICS 1529 RED, 1531 BLACK	AMP 1438231-5	DELPHI 12066386	2400048XN SERIES
24000488NBB	BLACK E-COAT, RH	DELPHI 8917548	DELPHI 12020338	SEBRO PLASTICS 1529 RED, 1531 BLACK	AMP 1438231-5	DELPHI 12066386	
24000489NB	PLAIN FINISH, LH	DELPHI 8917548	DELPHI 12020338	SEBRO PLASTICS 1529 RED, 1531 BLACK	AMP 1438231-5	DELPHI 12066386	
24000489NBB	BLACK E-COAT, LH	DELPHI 8917548	DELPHI 12020338	SEBRO PLASTICS 1529 RED, 1531 BLACK	AMP 1438231-5	DELPHI 12066386	



- NOTES:**
- ALL DIMENSIONS HAVE AN IMPLIED TOLERANCE OF $\pm .25"$ [6.4MM] EXCEPT THE MOUNTING DIMENSIONS.
 - DIMENSIONS IN [] ARE IN MILLIMETERS.
 - THE 6-WAY POWER SEAT ADJUSTER CONFORMS TO FMVSS 207 IN AFFECT AT TIME OF MANUFACTURE.
 - ALL COMPONENTS WITH E-COAT OR ZINC NICKEL DICHROMATE FINISH CONFORM TO ASTM B-117, 250 HOURS OF SALT SPRAY.
 - STALL CURRENT AT 12 VDC IS 22 A PER MOTOR.
 - THE RECOMMENDED MAXIMUM WEIGHT IS 400 LBS.
 - THE TRAVEL RATE IN THE VERTICAL MOTION IS 64 MM/SEC OR 2.5 INCH/SEC.
 - THE TRAVEL RATE IN THE HORIZONTAL MOTION IS 25 MM/SEC OR 1.0 INCH/SEC.
 - THE RECOMMENDED TEMPERATURE RANGE IS -29°C TO +71°C OR -20°F TO +160F.
 - THE WIRE HARNESS LENGTH FROM THE REAR VERTICAL MOTOR TO SWITCH IS 31.5 INCH (800MM).



H.O. BOSTROM

H.O. BOSTROM CO., INC.
818 PROGRESS AVENUE
WAUKESHA, WI 53186
www.hobostrom.com

NOTICE:
THIS DRAWING CONTAINS CONFIDENTIAL
PROPRIETARY INFORMATION OWNED BY H.O. BOSTROM, INC.
BY ACCEPTING THIS DRAWING, THE BORROWER AGREES NOT TO
DISCLOSE, USE OR DUPLICATE IT TO OTHERS, EXCEPT AS
AUTHORIZED IN WRITING BY H.O. BOSTROM CO., INC.

DESCRIPTION:

6-WAY POWER SEAT ADJUSTER, NARROW

CHECKED BY:

TDK

DRAWN BY:

JSJ

FINISH:

SEE TABLE

DATE:

1/8/2016

DATE:

2/24/2014

SIMILAR TO:

SCALE:

1:5

PART NUMBER:

2400048XN SERIES

REV LVL

A

WEIGHT:
22.0 LBS
10.0 KGS

5/16-18 X 1.0" LG STUD (4) PLCS
ALTERNATE LENGTH OF 1.75"