

Year: 2015-2017  
Make: Newmar  
Model: Essex  
Type: Diesel Pusher  
Last Update: 09-16-15

**DIAMOND SHIELD**  
1278 LYELL AVE ROCHESTER, NY 14606  
TOLL FREE: 888.806.5862  
EMAIL: INFO@DIAMOND-SHIELD.COM  
WEBSITE: DIAMOND-SHIELD.COM


Cut Date: \_\_\_\_\_  
Cut By: \_\_\_\_\_  
Kind of Film: \_\_\_\_\_

Please write legibly. Complete entire face sheet and double check any numbers copied down.

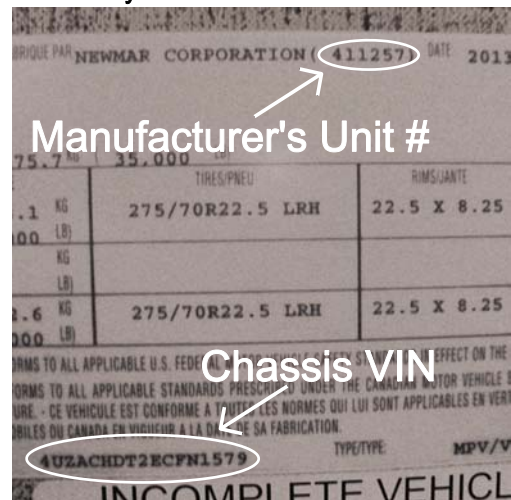
Installation Date: \_\_\_\_\_  
Installer(s): \_\_\_\_\_  
Location Of Installation: \_\_\_\_\_  
Chassis VIN (Last 8): \_\_\_\_\_  
Manufacturer's Unit #: \_\_\_\_\_

Lot #(s): \_\_\_\_\_

P.O. # (if needed): \_\_\_\_\_

ARE ALL PAINT IMPERFECTIONS AND POTENTIAL PROBLEMS  
SHOWN BELOW ON PATTERN (Including Based Areas): Yes / No  
Who Approved The Paint for Installation: \_\_\_\_\_  
Was Diamond Placed in Recommend Location On Unit: Yes \ No  
Were All Edges Heat Gunned and Re-Squeegeed: Yes \ No  
Warranty and Product Care Should Be Placed In Cabinet Over The Sink  
Was Warrantry Card Filled Out and Left In Unit: Yes \ No  
Was Product Care Left In Unit: Yes \ No  
Diamond placement indicated below by 

Chassis VIN And Unit # Located  
On Wall By Driver's Seat Close To The Floor



#### Parts

- |                        |                        |
|------------------------|------------------------|
| 1. Upper Header        | 6. DS Fog Light Insert |
| 2. Lower Header        | 7. Door Latch          |
| 3. Bumper              | 8. Grab Handle         |
| 4. Lower Center Bumper | 9. Kick Plate          |
| 5. PS Fog Light Insert |                        |

