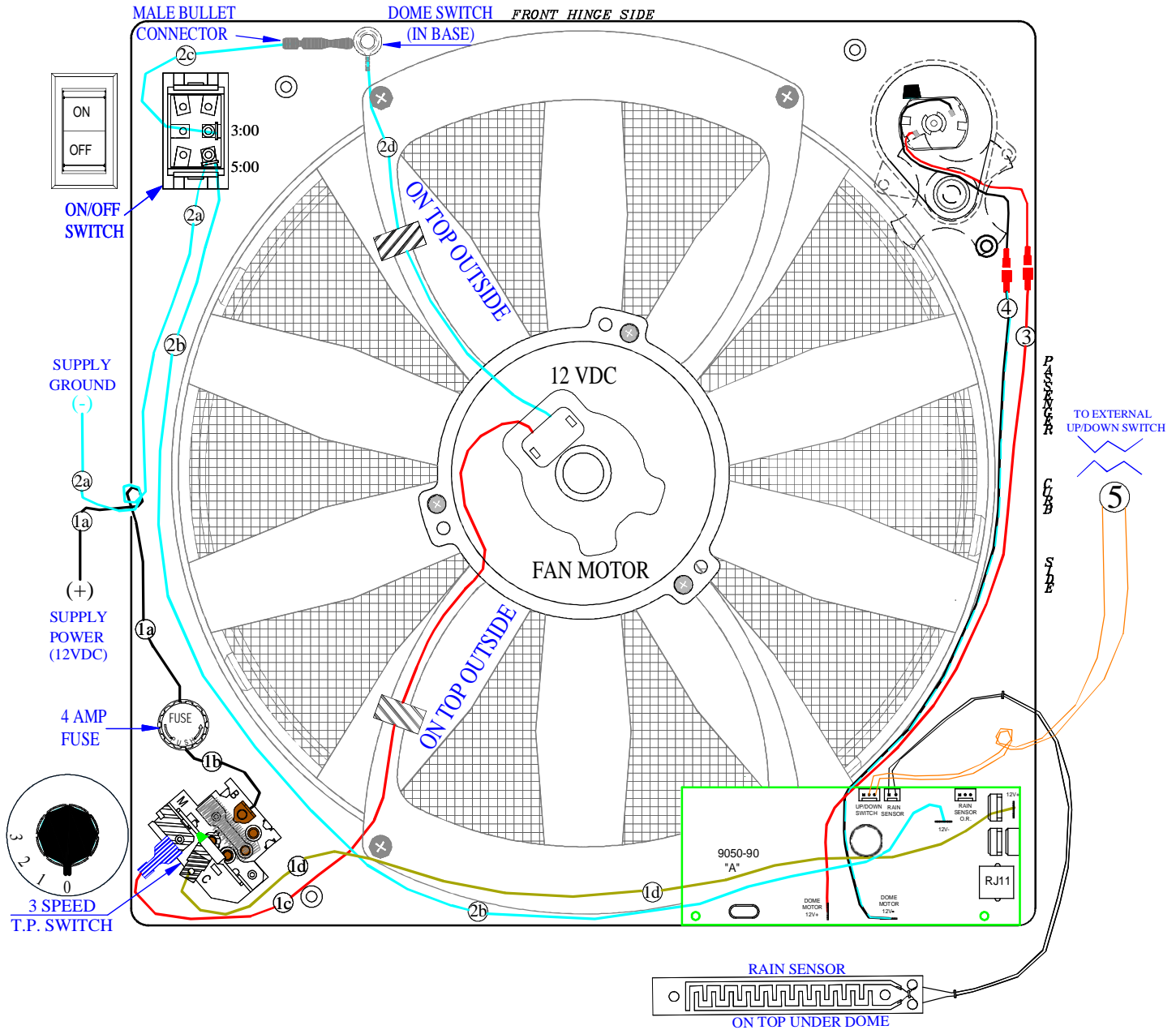


FAN-TASTIC VENT

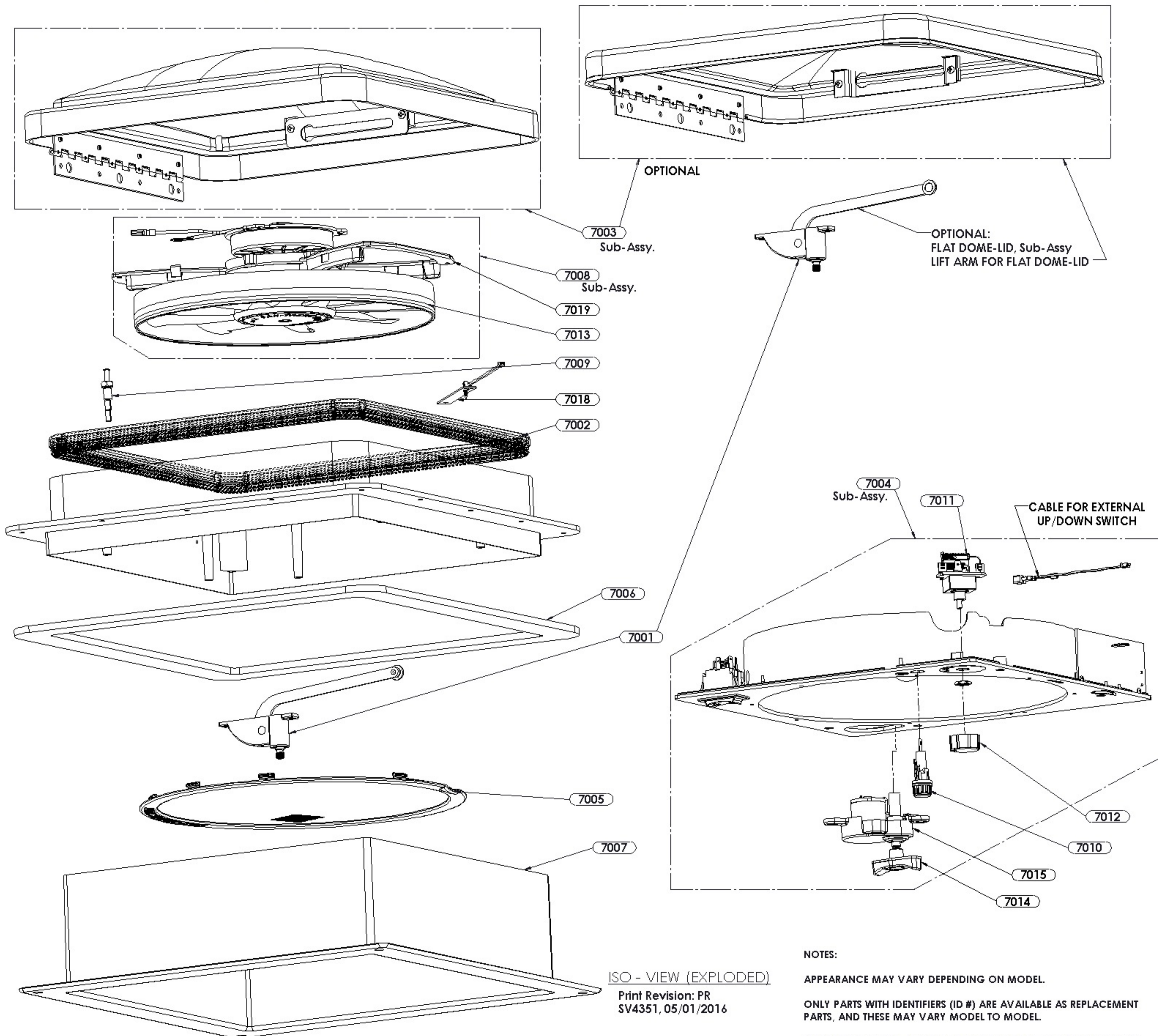
MODEL 4301, 17 RPM DOME LIFT MOTOR w/EXTERNAL WIRES FOR UP/DOWN SWITCH.
INTERNAL THERMALLY PROTECTED 3-SPEED SWITCH, FAN BLADE ON/OFF & RAIN SENSOR.



12 VOLT SYSTEM COLOR KEY;

- | | | |
|------|---------------|--|
| (1a) | WS-0342-09 | #16 BLACK POSITIVE FROM 12VDC POWER SUPPLY TO 4 AMP SLO-BLO FUSE |
| (1b) | WS-0110-09 | #16 BLACK POSITIVE FROM 4 AMP SLO-BLO FUSE TO 3-SPEED "B" TERMINAL |
| (1c) | | |
| (1d) | WS-0633-89 | #16 RED POSITIVE FROM 3 SPEED "M" POST TO 12V DC FAN MOTOR POSITIVE |
| (2a) | WS-0280-81 | #18 YELLOW POSITIVE FROM 3-SPEED SWITCH "C" POST TO PCB "12V+" POST |
| (2b) | WS-0268-81 | #16 WHITE GROUND FROM SUPPLY GROUND TO ON/OFF SWITCH 5:00 POST |
| (2c) | WS-0170-81 | #16 WHITE GROUND FROM ON/OFF 5:00 POST TO PCB "12V-" POST |
| (2d) | | |
| (3) | WS-0602-88 | #16 WHITE GROUND FROM ON/OFF SWITCH 3:00 POSITION TO DOME SWITCH IN BASE |
| (4) | WS-0602-09/81 | #16 WHITE GROUND FROM DOME SWITCH IN BASE TO FAN MOTOR GROUND |
| (5) | 9051-91 | #18 RED POSITIVE FROM PCB "DOME MOTOR 12V+" POST TO 17 RPM LIFT MOTOR |
| | | #18 BLACK w/WHITE STRIPE NEGATIVE FROM PCB "DOME MOTOR 12V-" POST TO 17 RPM LIFT MOTOR |
| | | #24 ORANGE 3 PIN CABLE FROM PCB "UP/DOWN PLUG" TO EXTERNAL WALL UP/DOWN SWITCH |

4351 / 4301 / 4251 / 4201 -SERIES FAN MODEL SERVICE PARTS



NOTES:

APPEARANCE MAY VARY DEPENDING ON MODEL.

ONLY PARTS WITH IDENTIFIERS (ID #) ARE AVAILABLE AS REPLACEMENT PARTS, AND THESE MAY VARY MODEL TO MODEL.

SEE SPECIFIC MODEL NUMBER LISTING FOR AVAILABLE SERVICE PARTS.

Service Parts Detail

Service parts for FV4301LWTSD81-SP

Model #: **810146**
Product #: 958676249

ID	SERVICE PART	DESCRIPTION
7001	K8011-05	▶ LIFT ARM KIT-DOME LID
7002	K1145-09	▶ HI-PRO SEAL REPLACEMENT KIT
7003	K1020-19	▶ DOME KIT - SMOKE
7004	810325	▶ S4301-81 SCREEN ASM, WHITE
7005	K2034-81	▶ POP 'N LOCK SERVICE KIT
7008	K8017-00	▶ FAN MOTOR ASSEMBLY - STANDARD
7009	K1122-05	▶ DOME SWITCH - PLUNGER STYLE
7010	K9018-09	▶ FUSE HOLDER KIT (TURN CAP)
7011	K1031-05	▶ 3-SPEED SWITCH w/NUT
7012	K1034-09	▶ KNOB-PUSH ON, BLACK
7013	K1137-00	▶ 11.5" CLEAR FAN BLADE-8MM
7014	K1142-09	▶ KNOB KIT,WITH SCREW
7015	K6010-81	▶ 17 RPM LIFT MOTOR ASM
7018	K9050-42	▶ RAIN SENSOR ASSMEBLY
7019	K8015-00	▶ MOTOR MOUNT - CLEAR POLYCARB