

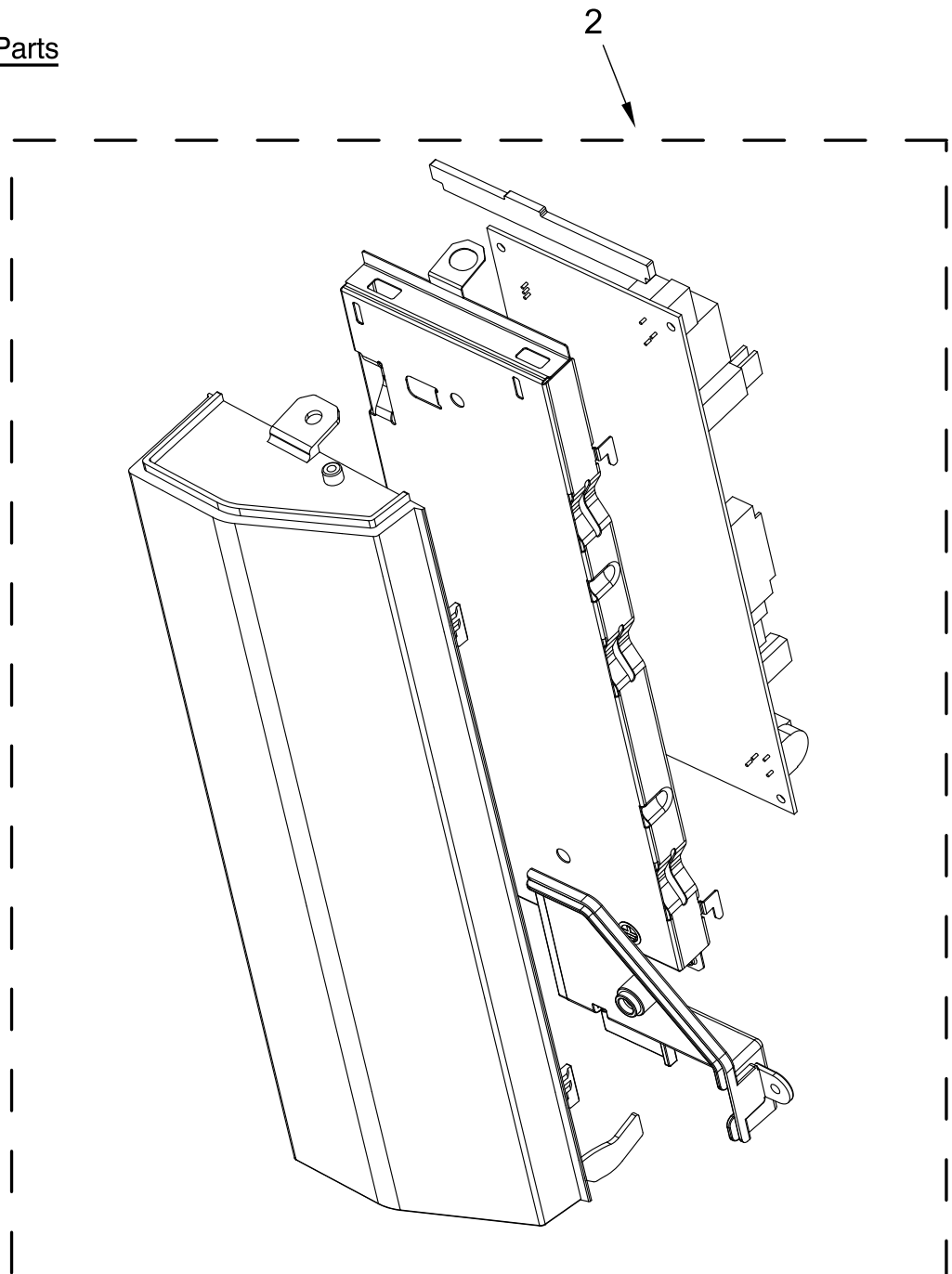
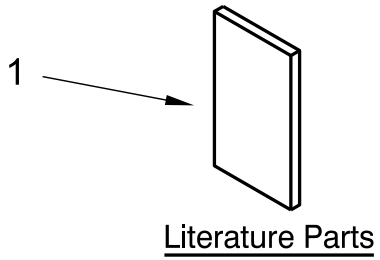


1.9 CUBIC FOOT MICROWAVE HOOD (TimeSavor Plus True Convection)

MODELS:

YWMH76719CW0 (White)
YWMH76719CB0 (Black)
YWMH76719CS0 (Stainless)

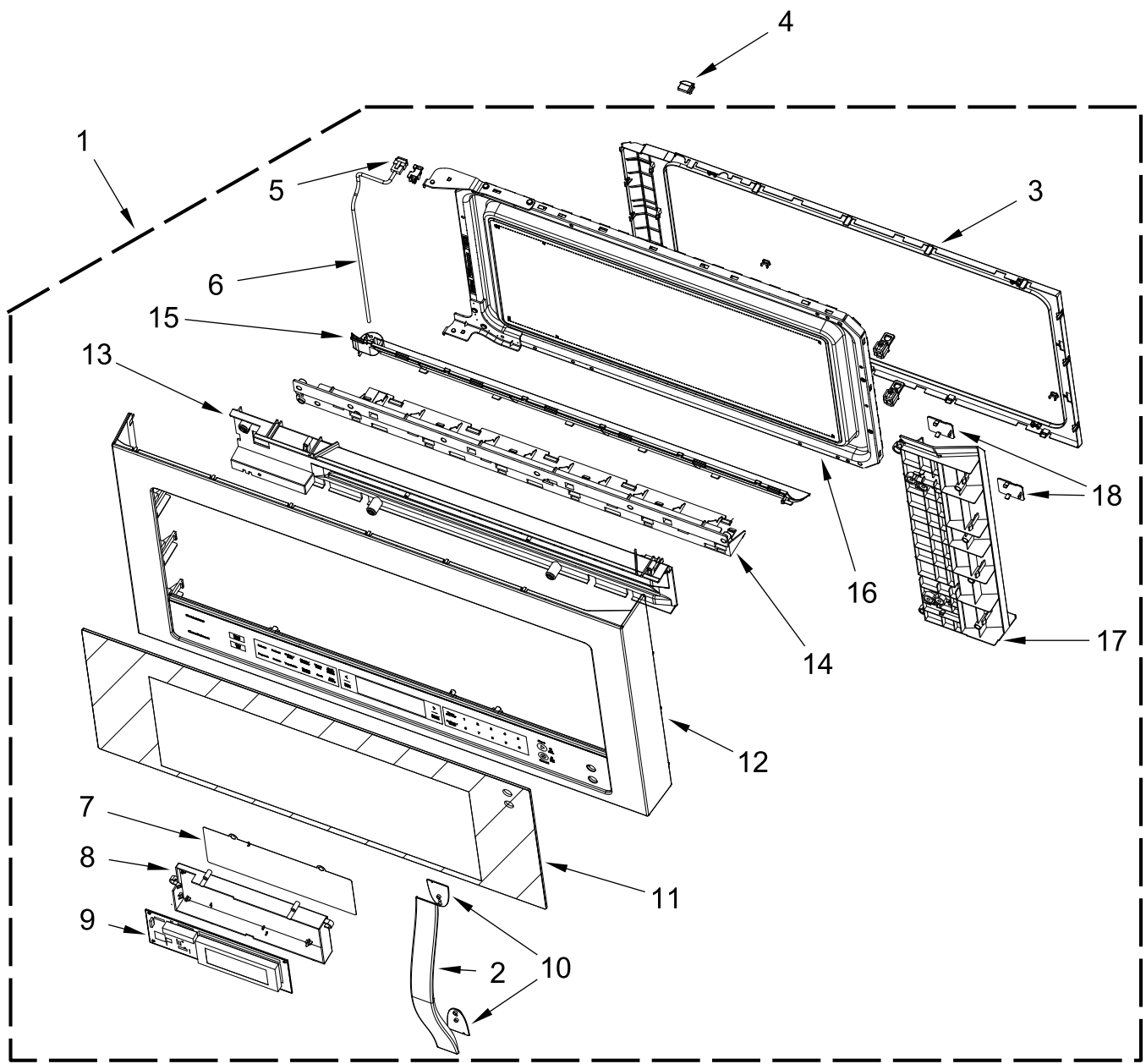
CONTROL PANEL PARTS



CONTROL PANEL PARTS

| <u>Illus.</u> <u>No.</u> | <u>Part No.</u> | <u>Description</u> | <u>Illus.</u> <u>No.</u> | <u>Part No.</u> | <u>Description</u> |
|-----------------------------|-----------------|---------------------------|-----------------------------|-----------------|-----------------------------|
| 1 | | Literature Parts | 2 | | Board, Control (With Cover) |
| | W10644787 | Installation Instructions | | W10722386 | White |
| | W10644784 | Use and Care Guide | | W10722387 | Black |
| | W10644786 | Quick Reference Guide | | W10722388 | Stainless |
| | W10644785 | Tech Sheet | | | |

DOOR PARTS



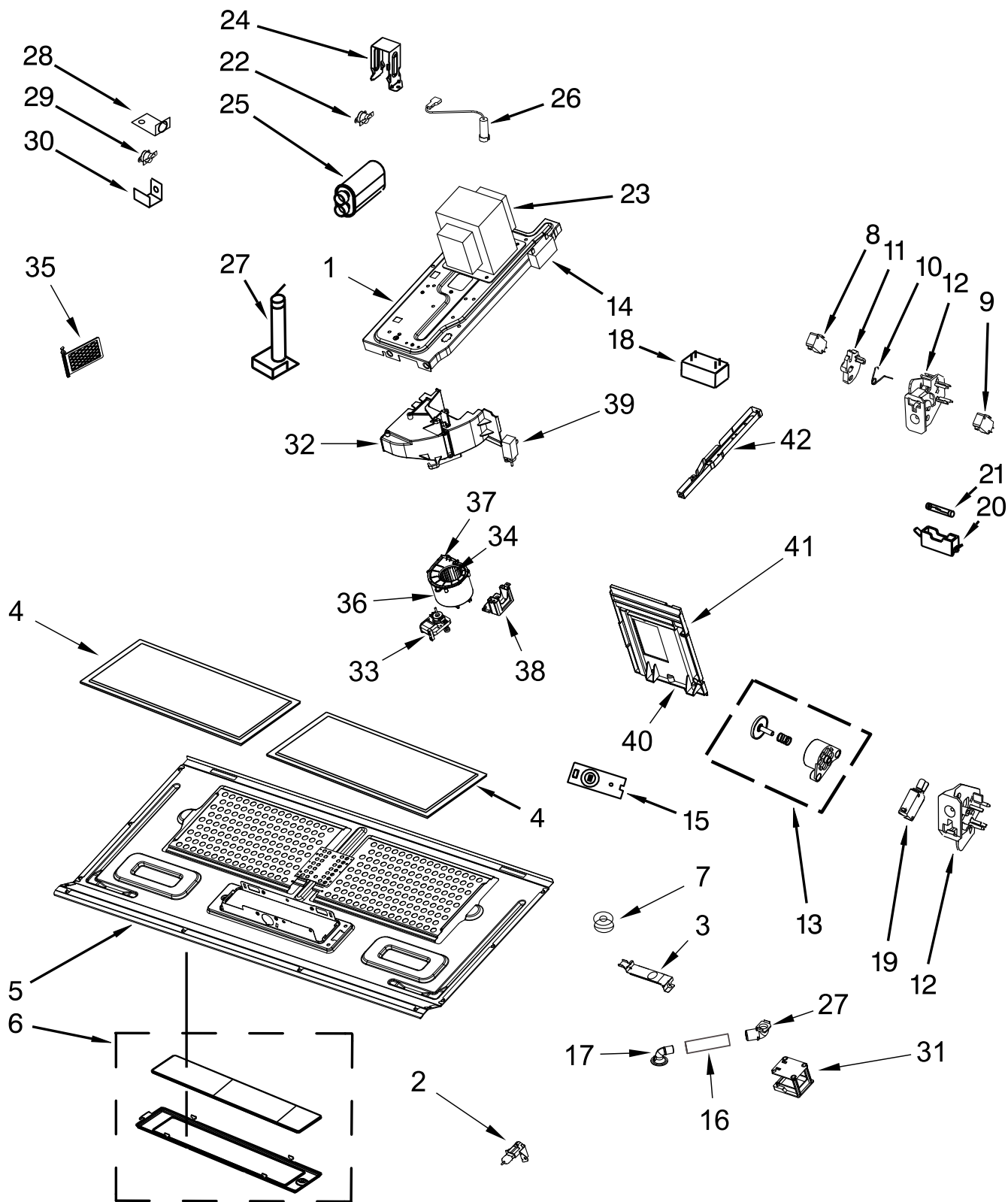
DOOR PARTS

| <u>Illus.</u> <u>No.</u> | <u>Part No.</u> | <u>Description</u> |
|-----------------------------|-----------------|-----------------------------|
| 1 | | Door, Complete |
| | W10622223 | White |
| | W10622226 | Black |
| | W10622227 | Stainless |
| 2 | | Handle |
| | W10571333 | White |
| | W10571332 | Black |
| | W10478162 | Stainless |
| 3 | W10648086 | Frame, Inner |
| 4 | W10643448 | Stopper, Door |
| 5 | W10478659 | Holder, Door Cable |
| 6 | W10508745 | Wire, Door Control Cable |

| <u>Illus.</u> <u>No.</u> | <u>Part No.</u> | <u>Description</u> |
|-----------------------------|-----------------|----------------------|
| 7 | W10540298 | Plate, UI Insulation |
| 8 | W10478216 | Holder, UI |
| 9 | W10643784 | Control |
| 10 | W10478213 | Cushion, Handle |
| 11 | | Glass, Outer |
| | W10478716 | White |
| | W10478721 | Black |
| | W10478675 | Stainless |
| 12 | | Assembly, Door Frame |
| | W10648087 | White |
| | W10648088 | Black |
| | W10579828 | Stainless |

| <u>Illus.</u> <u>No.</u> | <u>Part No.</u> | <u>Description</u> |
|-----------------------------|-----------------|-------------------------|
| 13 | W10617743 | Cover, UI |
| 14 | W10476546 | Bracket, Door |
| 15 | | Frame, Back Decorating |
| | W10570992 | White |
| | W10476550 | Black |
| 16 | W10568846 | Body, Door (With Glass) |
| 17 | | Bracket, Outer Door |
| | W10571118 | White |
| | W10478656 | Black |
| 18 | | Cover, Screw |
| | W10571119 | White |
| | W10478657 | Black |

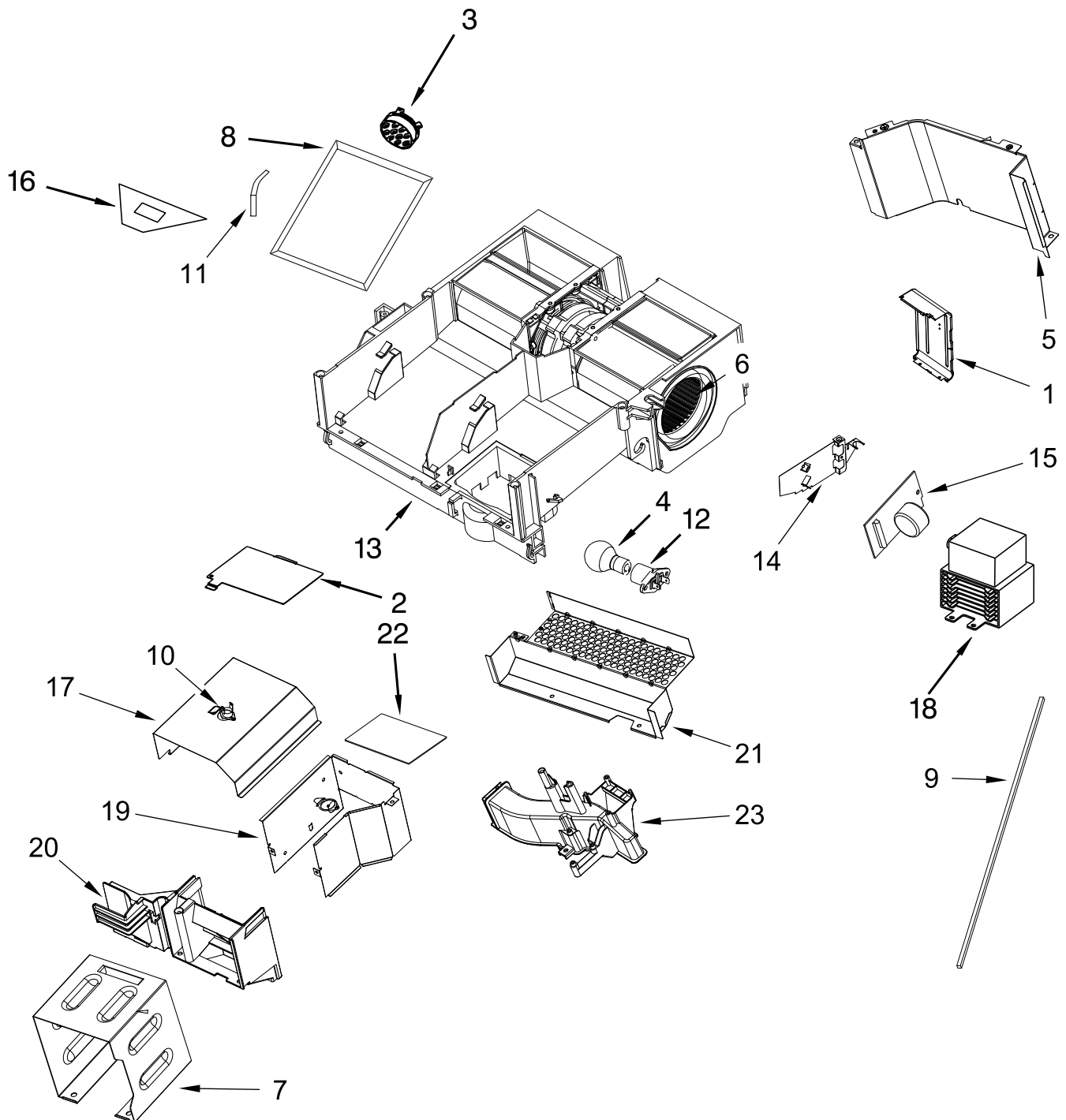
INTERIOR AND VENTILATION PARTS



INTERIOR AND VENTILATION PARTS

| <u>Illus.</u> <u>No.</u> | <u>Part No.</u> | <u>Description</u> | <u>Illus.</u> <u>No.</u> | <u>Part No.</u> | <u>Description</u> | <u>Illus.</u> <u>No.</u> | <u>Part No.</u> | <u>Description</u> |
|-----------------------------|-----------------|------------------------------------|-----------------------------|-----------------|------------------------------|-----------------------------|-----------------|----------------------|
| 1 | W10540723 | Chassis | 15 | W10536989 | Thermistor PCBA | 30 | 8206223 | Clip |
| 2 | W10208564 | Lamp, Halogen | 16 | W10510235 | Tube, Smart Pop Sound | 31 | W10508748 | PCBA, Smart Pop |
| 3 | W10525853 | Terminal, Smart Pop | 17 | W10510234 | Terminal, Smart Pop | 32 | W10631701 | Magnetron, Air Guide |
| 4 | W10535950 | Filter, Grease | 18 | W10568805 | Resistor, Cement | 33 | W10536556 | Motor, Cooling |
| 5 | W10571126 | Plate, Bottom | 19 | W10211974 | Switch, Micro | 34 | W10533503 | Wheel, Cooling Fan |
| 6 | W10240330 | Assembly, Lamp Glass and Holder | 20 | W10245194 | Holder, Fuse | 35 | W10533486 | Valve, Door |
| 7 | W10510237 | Spacer, Smart Pop | 21 | W10138793 | Fuse | 36 | W10533501 | Housing, Cooling Fan |
| 8 | W10269457 | Microswitch V15T16-CZ200/NC/NO | 22 | W10591803 | Thermostat, Magnetron | 37 | W10533502 | Cover, Cooling Fan |
| 9 | W10269458 | Microswitch V15T16-CC200/NC | 23 | W10709970 | Transformer, High Voltage | 38 | W10533480 | Holder, NTC |
| 10 | W10156812 | Spring, Interlock | 24 | W10518719 | Bracket, Capacitor | 39 | W10458325 | Actuator |
| 11 | W10156811 | Plate, Cam | 25 | W10345331 | Capacitor, High Voltage | 40 | W10533107 | Deflector, Air |
| 12 | | Support, Interlock | 26 | W10575765 | Diode, High Voltage | 41 | W10571453 | Insulation, Side |
| | 8206419 | Top | 27 | W10510233 | Terminal, PCBA Smart Pop | 42 | W10540718 | Bracket, Cavity |
| | W10156813 | Bottom | 28 | W10259248 | Cover, Thermostat | | | |
| 13 | W10197758 | Assembly, Piston | 29 | 8206068 | Thermostat, Convection | | | |
| 14 | W10605897 | Capacitor, Hood Motor | | | | | | |

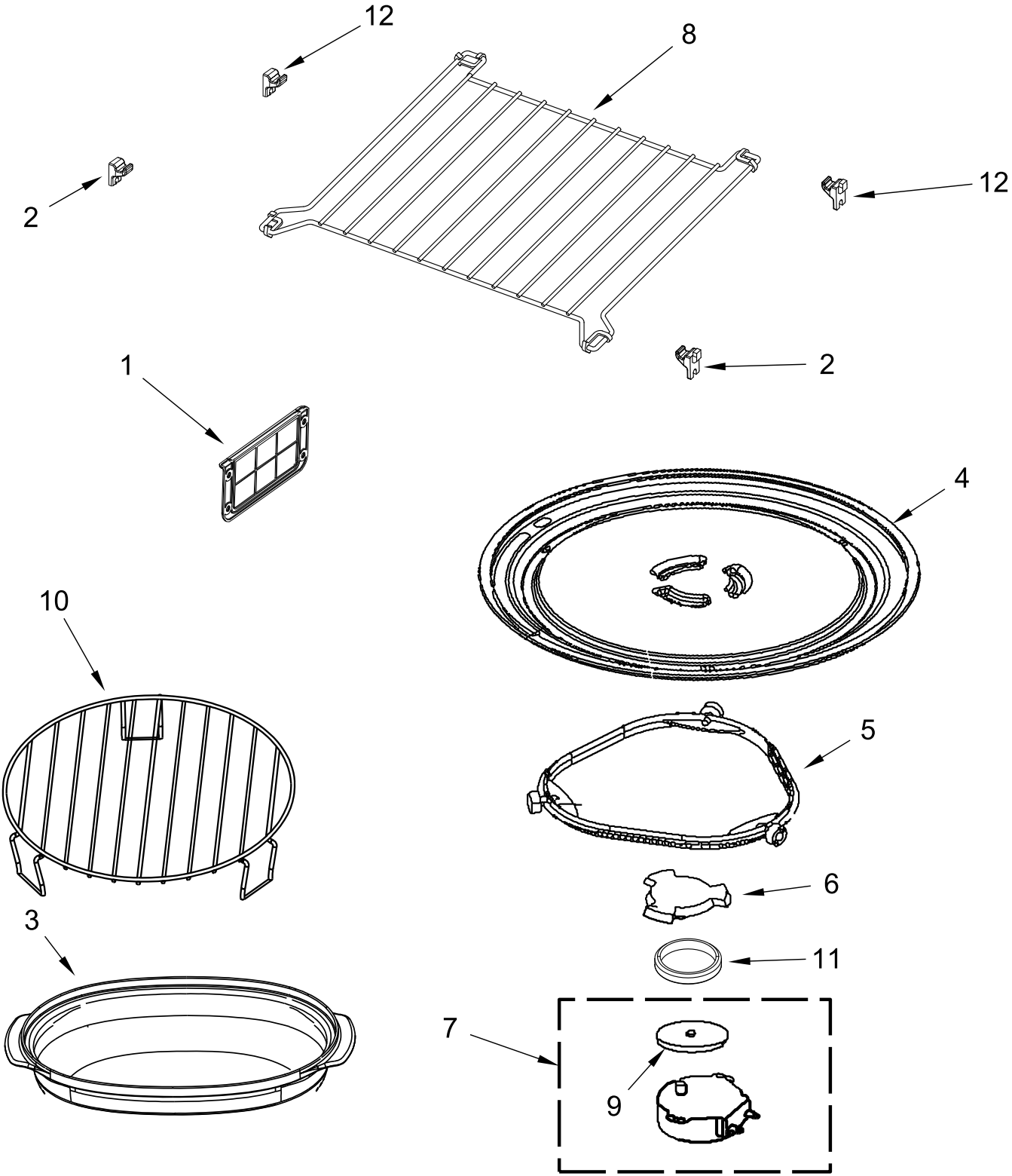
AIR FLOW PARTS



AIR FLOW PARTS

| <u>Illus.</u> <u>No.</u> | <u>Part No.</u> | <u>Description</u> | <u>Illus.</u> <u>No.</u> | <u>Part No.</u> | <u>Description</u> | <u>Illus.</u> <u>No.</u> | <u>Part No.</u> | <u>Description</u> |
|-----------------------------|-----------------|----------------------|-----------------------------|-----------------|-----------------------|-----------------------------|-----------------|--------------------------------|
| 1 | W10631698 | Deflector, Air | 11 | W10557537 | Sensor, Convection | 19 | W10533483 | Duct, Cavity (Rear) |
| 2 | 8206382 | Cover, Lamp | 12 | W10210878 | Holder, Lamp Cavity | 20 | W10570209 | Duct, Cavity (Front) |
| 3 | W10557536 | Sensor, Humidity | 13 | W10632409 | Baseplate, Air Guide | 21 | W10629803 | Shield, Finger (Includes Seal) |
| 4 | 4393681 | Lamp, Cavity 30 Watt | 14 | W10533484 | Cover, Duct (Right) | 22 | W10531724 | Glass, Lamp |
| 5 | W10533487 | Plate, Air Guide | 15 | W10531156 | Board, Filter | 23 | W10533106 | Assembly, Air Guide Grill |
| 6 | W10479847 | Motor, Fan | 16 | W10139750 | Socket, Motor Wire | | | |
| 7 | W10556824 | Housing, Damper | 17 | W10533112 | Outlet, Cavity (Back) | | | |
| 8 | 8206230 | Filter, Charcoal | 18 | W10626122 | Magnetron | | | |
| 9 | W10571180 | Seal, Foam | | | | | | |
| 10 | W10654514 | Thermostat, Cavity | | | | | | |

TURNTABLE PARTS



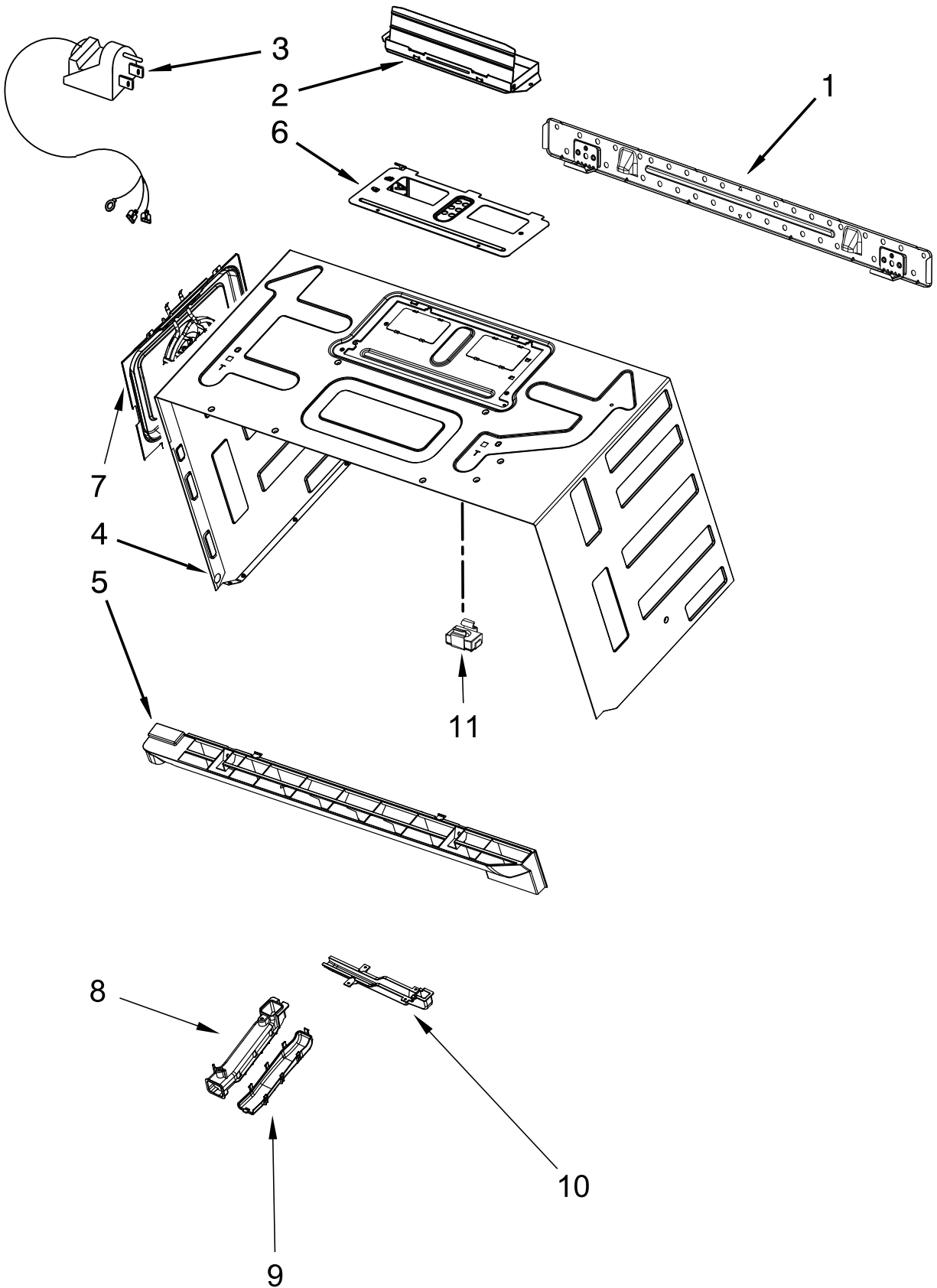
TURNTABLE PARTS

| <u>Illus.</u> <u>No.</u> | <u>Part No.</u> | <u>Description</u> |
|-----------------------------|-----------------|--|
| 1 | W10533498 | Inlet, Cover |
| 2 | W10626726 | Hook, Microwave (Left Front & Right Front) |
| 3 | W10660051 | Steamer |
| 4 | W10531726 | Turntable |

| <u>Illus.</u> <u>No.</u> | <u>Part No.</u> | <u>Description</u> |
|-----------------------------|-----------------|--------------------|
| 5 | W10570257 | Ring, Turntable |
| 6 | W10337248 | Driver, Turntable |
| 7 | W10466420 | Motor, Turntable |
| 8 | W10249618 | Rack, Microwave |
| 9 | 8184109 | Seal, Waterproof |

| <u>Illus.</u> <u>No.</u> | <u>Part No.</u> | <u>Description</u> |
|-----------------------------|-----------------|---|
| 10 | W10440082 | Rack, Convection |
| 11 | W10568148 | Seal, Turntable Block |
| 12 | W10573936 | Hook, Microwave (Left Rear & Right Rear) |

CABINET AND INSTALLATION PARTS



CABINET AND INSTALLATION PARTS

| <u>Illus.</u> <u>No.</u> | <u>Part No.</u> | <u>Description</u> | <u>Illus.</u> <u>No.</u> | <u>Part No.</u> | <u>Description</u> |
|-----------------------------|-----------------|------------------------------------|-----------------------------|-----------------|---------------------------------|
| 1 | W10440498 | Plate, Mounting | 11 | W10596040 | Assembly, Mounting Nut |
| 2 | 8206442 | Damper | | | Following Parts Not Illustrated |
| 3 | W10708076 | Cord, Power | | W10571450 | Insulation, Back |
| 4 | | Case, Outer | | W10571451 | Insulation, Top |
| | W10571409 | White | | W10571454 | Insulation, Bottom |
| | W10571408 | Black | | | Miscellaneous Parts |
| 5 | | Grille, Vent | | | |
| | W10701700 | White | | 8206614 | Installation, Hardware |
| | W10701701 | Black | | | |
| 6 | W10625423 | Cover, Fan Motor | | W10190020 | Template, Upper |
| 7 | W10722311 | Assembly, Convection Motor and Fan | | 8169704 | 1/4-20x3" Panhead Screw |
| 8 | W10533488 | Duct, Cooling (Upper) | | W10622246 | Harness, Main |
| 9 | W10533489 | Duct, Cooling (Bottom) | | W10530090 | Harness, Headlamp and Turntable |
| 10 | W10570212 | Duct, Air Turntable Motor | | W10539840 | Harness, PCBA Ground Wire |
| | | | | W10508741 | Wire, Door Control Cable |



User Guide

Microwave Hood Combination

THANK YOU for purchasing this high-quality product. If you should experience a problem not covered in PROBLEM SOLVER, please visit our website at www.whirlpool.com for additional information. If you still need assistance, call us at 1-800-253-1301. You will need your model and serial number located on the front facing of the microwave oven opening, behind the door.

Para obtener acceso a "Instrucciones para el usuario de la combinación microondas campana" en español, o para obtener información adicional acerca de su producto, visite: www.whirlpool.com

Tenga listo su número de modelo completo. Puede encontrar su número de modelo y de serie en la etiqueta ubicada en la parte frontal de la abertura del horno de microondas, detrás de la puerta.

MICROWAVE HOOD COMBINATION SAFETY

Your safety and the safety of others are very important.

We have provided many important safety messages in this manual and on your appliance. Always read and obey all safety messages.



This is the safety alert symbol.

This symbol alerts you to potential hazards that can kill or hurt you and others.

All safety messages will follow the safety alert symbol and either the word "DANGER" or "WARNING."

These words mean:

⚠ DANGER

You can be killed or seriously injured if you don't immediately follow instructions.

⚠ WARNING

You can be killed or seriously injured if you don't follow instructions.

All safety messages will tell you what the potential hazard is, tell you how to reduce the chance of injury, and tell you what can happen if the instructions are not followed.

IMPORTANT SAFETY INSTRUCTIONS

When using electrical appliances basic safety precautions should be followed, including the following:

WARNING: To reduce the risk of burns, electric shock, fire, injury to persons, or exposure to excessive microwave energy:

- Read all instructions before using the microwave oven.
- Read and follow the specific "PRECAUTIONS TO AVOID POSSIBLE EXPOSURE TO EXCESSIVE MICROWAVE ENERGY" found in this section.
- The microwave oven must be grounded. Connect only to properly grounded outlet. See "GROUNDING INSTRUCTIONS" found in this section and in the provided Installation Instructions.

- Install or locate the microwave oven only in accordance with the provided Installation Instructions.
- Some products such as whole eggs in the shell and sealed containers - for example, closed glass jars - are able to explode and should not be heated in the microwave oven.

SAVE THESE INSTRUCTIONS

IMPORTANT SAFETY INSTRUCTIONS

- Use the microwave oven only for its intended use as described in the manual. Do not use corrosive chemicals or vapors in the microwave oven. This type of oven is specifically designed to heat, cook, or dry food. It is not designed for industrial or laboratory use.
- As with any appliance, close supervision is necessary when used by children.
- Do not operate the microwave oven if it has a damaged cord or plug, if it is not working properly, or if it has been damaged or dropped.
- The microwave oven should be serviced only by qualified service personnel. Call an authorized service company for examination, repair, or adjustment.
- Do not cover or block any openings on the microwave oven.
- Do not store this microwave oven outdoors. Do not use the microwave oven near water - for example, near a kitchen sink, in a wet basement, near a swimming pool, or similar locations.
- Do not immerse cord or plug in water.
- Keep cord away from heated surfaces.
- Do not let cord hang over edge of table or counter.
- See door surface cleaning instructions in the "Microwave Oven Care" section.
- To reduce the risk of fire in the oven cavity:
 - Do not overcook food. Carefully attend the microwave oven when paper, plastic, or other combustible materials are placed inside the oven to facilitate cooking.
 - Remove wire twist-ties from paper or plastic bags before placing bags in oven.
 - If materials inside the oven ignite, keep oven door closed, turn oven off, and disconnect the power cord, or shut off power at the fuse or circuit breaker panel.
 - Do not use the cavity for storage purposes. Do not leave paper products, cooking utensils, or food in the cavity when not in use.
- Liquids, such as water, coffee, or tea are able to be overheated beyond the boiling point without appearing to be boiling. Visible bubbling or boiling when the container is removed from the microwave oven is not always present. **THIS COULD RESULT IN VERY HOT LIQUIDS SUDDENLY BOILING OVER WHEN THE CONTAINER IS DISTURBED OR A SPOON OR OTHER UTENSIL IS INSERTED INTO THE LIQUID.**
To reduce the risk of injury to persons:
 - Do not overheat the liquid.
 - Stir the liquid both before and halfway through heating it.
 - Do not use straight-sided containers with narrow necks.
 - After heating, allow the container to stand in the microwave oven for a short time before removing the container.
 - Use extreme care when inserting a spoon or other utensil into the container.
- Do not mount over a sink.
- Do not store anything directly on top of the microwave oven when the microwave oven is in operation.
- Clean Ventilating Hoods Frequently - Grease should not be allowed to accumulate on hood or filter.
- When flambéing foods under the hood, turn the fan on.
- Suitable for use above both gas and electric cooking equipment.
- Intended to be used above ranges with maximum width of 36" (91.44 cm).
- Use care when cleaning the vent-hood filter. Corrosive cleaning agents, such as lye-based oven cleaners, may damage the filter.

SAVE THESE INSTRUCTIONS

PRECAUTIONS TO AVOID POSSIBLE EXPOSURE TO EXCESSIVE MICROWAVE ENERGY

- (a) Do not attempt to operate this oven with the door open since open-door operation can result in harmful exposure to microwave energy. It is important not to defeat or tamper with the safety interlocks.
- (b) Do not place any object between the oven front face and the door or allow soil or cleaner residue to accumulate on sealing surfaces.
- (c) Do not operate the oven if it is damaged. It is particularly important that the oven door close properly and that there is no damage to the:
 - (1) Door (bent),
 - (2) Hinges and latches (broken or loosened),
 - (3) Door seals and sealing surfaces.
- (d) The oven should not be adjusted or repaired by anyone except properly qualified service personnel.

State of California Proposition 65 Warnings:

WARNING: This product contains one or more chemicals known to the State of California to cause cancer.

WARNING: This product contains one or more chemicals known to the State of California to cause birth defects or other reproductive harm.

WARNING



Electrical Shock Hazard

Plug into a grounded 3 prong outlet.

Do not remove ground prong.

Do not use an adapter.

Do not use an extension cord.

Failure to follow these instructions can result in death, fire, or electrical shock.

Observe all governing codes and ordinances.

Required:

- A 120 volt, 60 Hz, AC only, 15- or 20-amp electrical supply with a fuse or circuit breaker.

Recommended:

- A time-delay fuse or time-delay circuit breaker.
- A separate circuit serving only this microwave oven.

GROUNDING INSTRUCTIONS

■ **For all cord connected appliances:**

The microwave oven must be grounded. In the event of an electrical short circuit, grounding reduces the risk of electric shock by providing an escape wire for the electric current. The microwave oven is equipped with a cord having a grounding wire with a grounding plug. The plug must be plugged into an outlet that is properly installed and grounded.

WARNING: Improper use of the grounding plug can result in a risk of electric shock. Consult a qualified electrician or serviceman if the grounding instructions are not completely understood, or if doubt exists as to whether the microwave oven is properly grounded.

Do not use an extension cord. If the power supply cord is too short, have a qualified electrician or serviceman install an outlet near the microwave oven.

SAVE THESE INSTRUCTIONS

This device complies with Part 18 of the FCC Rules.

OPERATING YOUR MICROWAVE OVEN

Settings

Clock

The Clock is a 12-hour (12:00-11:59) or 24-hour (0:00-23:59) clock. Touch **OPTIONS/CLOCK** to reach Clock submenu, and follow the prompts to set the Clock. Clock format (12 hours with AM and PM or 24 hours) may also be set in the Clock submenu.

Timer

With the microwave oven in standby mode, touch the Timer control, enter time, then touch the Timer control or the Start control. Cook functions may be entered while the Timer is counting down. To cancel timer, touch Timer control while the Timer countdown is active in the display.

Control Lock

Activate to avoid unintended start. Touch and hold the Cancel control for about 3 seconds until 2 tones sound and padlock icon appears in the display. Repeat to unlock control.

Options/Clock

Twelve options/settings may be adjusted: 1-Clock; 2-Scrolling Speed; 3-Sound; 4-Language (English or French); 5-Energy Save; 6-Auto Adapt Fan; 7-Filter Alert; 8-30 Minute Fan Timer; 9-Light Timer; 10-Temp Calibration (on convection models); 11-Demo Mode; 12-Factory Reset.

Vent Fan

Various speeds, ranging from high to low, and off. Comes on automatically as cooling fan during any cook function.

30 Minute Fan Timer: Set vent fan to run for exactly 30 minutes, or to run for only 30 minutes more (off after 30 minutes). The vent fan may be turned off at any time using the Vent Fan control. Touch **OPTIONS/CLOCK** to reach the 30 Minute Fan Timer submenu, and select the setting.

Auto Vent Fan: To keep the microwave oven from overheating, the auto vent fan will automatically turn on at high speed if the temperature from the range or cooktop below the microwave oven gets too hot. When this occurs, the vent fan cannot be turned off. "FAN ON for heat circulation" appears in the display.

Light Timer

Set the cooktop light to turn on and off at certain times. Touch **OPTIONS/CLOCK** to reach the Light Timer submenu, and follow the prompts to set the light on time and light off time in hours and minutes, or to cancel Light Timer.

NOTE: Light Timer uses 12-hour clock only.

Filter Alert

Reset the filter status after replacing and/or cleaning the filters. Touch **OPTIONS/CLOCK** to reach the Filter Alert submenu, and activate reset.

Sound (Tones)

Programming tones and signals. Key beep tones may be turned off, or all tones (including end-of-function signals) may be turned off. Touch **OPTIONS/CLOCK** to reach the Sound submenu, then follow the prompts to turn off or on the programming tones or all tones.

Scroll Speed

Scroll speed of the text may be adjusted. Touch the **OPTIONS/CLOCK** to reach the Scrolling Speed submenu, and follow the prompts to set speed.

Demo Mode

Activate to practice using the control without actually turning on the magnetron. Touch **OPTIONS/CLOCK** to reach the Demo Mode submenu, then follow the prompts to activate. The DEMO icon will light up in the display. Repeat to deactivate.

Energy Save

To conserve energy, the Clock will automatically turn off when the microwave oven goes into standby mode. Touch **OPTIONS/CLOCK** to reach the Clock and Energy Save submenu, and follow the prompts to turn on Clock.

Language (on some models)

Language of the display text may be changed. Touch the **OPTIONS/CLOCK** to reach the Language submenu, and follow the prompts to set language to English or French.

Features

CLEANRELEASE® Cavity Coating (on some models)

The durable, nonstick coating resists soil buildup by making cleaning easier. See “Microwave Oven Care” section.

6th SENSE® System

A sensor in the microwave oven detects moisture released from food as it heats, and adjusts the cooking time accordingly.

Convection Element and Fan

The convection element and fan are embedded in the wall of the microwave oven cavity, behind the metal screen.

Accessories

Convection Rack

Use the short convection rack for convection cycles (baking or roasting). Place cookware directly on rack for bake and for some roast functions. Some roast functions require that the food be placed directly on the rack. Use a microwave-safe, ovenproof dish or pan under the rack to catch the drippings.

Calibrate Temp

The actual convection cooking temperature may be calibrated higher or lower than the displayed temperature. For example, if you want the microwave oven to be a bit hotter, you may try setting the calibration to +10°. Touch **OPTIONS/CLOCK** to reach the Calibration submenu. The current setting will appear in the display with a checkmark next to it. Use number pads to select temperature variations in degrees Fahrenheit: 1= ±0° (reset to default), 2= +5°, 3= +10°, 4= +15°, 5= +20°, 6= -5°, 7= -10°, -8= -15° and 9= -20°.

NOTE: The microwave oven will remember the setting after a power failure.

Cooking Rack

Use the rectangular cooking rack only for 2-level cooking. To avoid damage to the microwave oven, always remove rack after 2-level cooking. To avoid damage to the microwave oven due to soil buildup, clean rack supports often.

Turntable

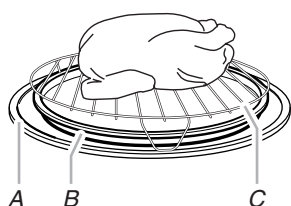
Turntable may be turned off for manual cooking only. This is helpful when cooking with plates that are bigger than the turntable, or when cooking with plates that are side by side. Turntable cannot be turned off during preset or sensor (on some models) functions.

Steamer Vessel

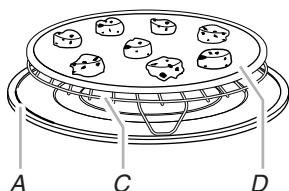
Use the steamer vessel base, insert and lid for steaming, or use just the base and lid for simmering.

Accessory Configurations

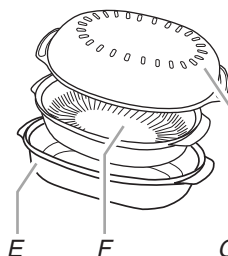
Roasting



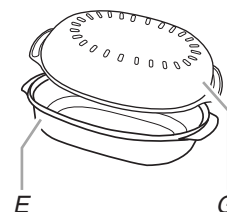
Baking



Steaming



Simmering



A. Turntable
B. Pan (not provided)
C. Convection rack

D. Cookie sheet (not provided)
E. Steamer base

F. Steamer insert
G. Steamer lid

Cookware and Dinnerware

Microwave-Safe

- Browning dish (Follow manufacturer recommendations.)
- Ceramic glass, glass
- China, earthenware (Follow manufacturer recommendations.)
- Melamine (Follow manufacturer recommendations.)
- Paper towels, paper plates, napkins (Use non-recycled paper.)
- Plastic wraps, bags, covers, dinnerware, containers (Follow manufacturer recommendations.)
- Pottery and clay (Follow manufacturer recommendations.)
- Silicone bakeware (Follow manufacturer recommendations.)
- Wax paper

To Test Cookware/Dinnerware: Place dish in microwave oven with 1 cup (250 mL) of water beside it. Program 1 minute of cook time at 100%. If dish becomes hot and the water stays cool, do not use the dish in the microwave oven.

Do Not Use

- Metal cookware and bakeware
- Straw or wicker
- Gold, silver or pewter
- Non-approved meat thermometers, skewers
- Twist ties
- Foil liners, such as sandwich wrappers
- Staples
- Objects with gold or silver trim or with metallic glaze

Microwave Oven Use

For list of preset programs, see the Quick Reference Guide provided with your model.

Manual Cooking/Stage Cooking

Touch COOK TIME, touch number pads to enter time, touch COOK POWER (if not 100%), touch number pads to enter power level (10-90), then touch the Start control.

If programming additional stages (up to three), touch OPTIONS/CLOCK to enter programming for the next stage, then enter the cook time and cook power of each, then touch the Start control.

Sensor Cooking

A sensor in the microwave oven detects moisture released from food as it heats, and adjusts the cooking time accordingly.

Make sure microwave oven has been plugged in for at least 1 minute. Use microwave-safe dish with loose-fitting lid, or cover microwave-safe dish with plastic wrap and vent. For optimal performance, wait at least 30 minutes after convection cooking or grilling (on some models) before sensor cooking.

Add More Time

At the end of any cycle using less than 100% cook power, "PRESS 0 TO ADD MORE TIME" scrolls in the display. Enter the additional time, if desired, and start the microwave oven. The cook power for all non-sensor cycles will be the same as in the finished cycle, but may be changed. If Add More Time is used after a sensor cycle, the cook power will be 100%, but may be changed.

Doneness

Adjust doneness for automatic cooking functions by touching COOK TIME repeatedly to scroll through "NORMAL," "MORE DONE" or "LESS DONE" within the first 20 seconds of starting the cook cycle. Doneness cannot be adjusted for Defrost functions.

Warm Hold

! WARNING

Food Poisoning Hazard

Do not let food sit in oven more than one hour before or after cooking.

Doing so can result in food poisoning or sickness.

Hot cooked food can be kept warm in the microwave oven. The Warm Hold function uses 10% cook power. Warm Hold can be used by itself or can be programmed to follow a cooking cycle. Opening the door during Warm Hold will cancel the function.

MICROWAVE OVEN CARE

General Cleaning

IMPORTANT: Before cleaning, make sure all controls are off and the microwave oven is cool. Always follow label instructions on cleaning products.

To avoid damage to the microwave oven caused by arcing due to soil buildup, keep cavity, microwave inlet cover, cooking rack supports, and area where the door touches the frame clean.

Clean with mild soap, water and a soft cloth or sponge, or as indicated below.

- Nonstick cavity coating (on some models): To avoid damage to the microwave oven cavity, do not use metal or sharp utensils or scrapers, or any type of abrasive cleanser or scrubbers.
- Cavity: Steam Clean function (on some models). See Quick Reference Guide
- Grease filter: mild soap and water or dishwasher.
- Door and exterior: mild soap and water, or glass cleaner applied to paper towel.
- Control panel: sponge or soft cloth and water.
- Stainless steel (on some models): mild soap and water, then rinse with clean water and dry with soft cloth, or use stainless steel cleaner.
- Turntable: mild soap and water or dishwasher.
- Rack(s): mild soap, water and washcloth. Dishwasher cleaning is not recommended.

Installing/Replacing Filters and Light Bulbs

NOTE: A filter status indicator (on some models) appears in the display when it is time to replace the charcoal filter, and clean or replace the grease filters. See "Settings" section to reset filter status.

- Grease filters: Grease filters are on the underside of microwave oven. Clean monthly, or as prompted by filter status indicator. Slide the filter away from the tab area, and drop out the filter. To reinstall, place end of the filter into the opening opposite the tab area, swing up the other end, and slide it toward the tab area.
- Charcoal filters: The charcoal filters are behind the vent grille at the top front of the microwave oven. The charcoal filters cannot be cleaned, and should be replaced about every 6 months, or as prompted by filter status indicator. Remove two screws on the vent grille, tilt the grille forward, lift it out, and remove filter. To reinstall, place the filter into its slotted area – wire mesh side up, replace vent grille, and secure with screws.
- Cooktop light: The cooktop light is located on the underside of the microwave oven, and is replaceable. Remove bulb cover screw, and open the bulb cover. Replace bulb, close bulb cover, and secure with screw.
- Cavity light: The cavity light bulb is located behind the vent grille at the top front of the microwave oven, under the bulb cover, and is replaceable. Open door. Remove two screws on the vent grille, tilt the grille forward, and lift it out. Remove right side charcoal filter. Open bulb cover and replace bulb. Close bulb cover, replace charcoal filter, replace vent grille, and secure with screws.

ACCESSORIES

Following is a list of available parts and supplies which may be purchased separately. Please refer to the cover for contact and model identification information.

Replacement Parts

- Turntable
- Turntable support and rollers
- Turntable hub
- Cooking rack
- Rack clip
- Rack support
- Grease filter
- Charcoal filter
- Cooktop light bulb
- Cavity light bulb

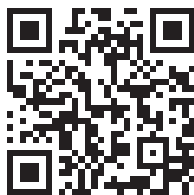
Provided Accessories

- Convection rack
- Steamer vessel

Cleaning Supplies

- Heavy Duty Degreaser
- affresh® Kitchen Appliance Cleaner
- affresh® Stainless Steel Cleaner
- affresh® Stainless Steel Wipes

PROBLEM SOLVER



Scan the code at left with your mobile device, or visit www.whirlpool.com/product_help for recommendations that may help you avoid a service call.

| If you experience | Recommended Solutions |
|---|--|
| Microwave oven will not operate | <p>Check the following:</p> <ul style="list-style-type: none"> ■ Household fuse or circuit breaker - If a household fuse has blown or a circuit breaker has tripped, replace the fuse or reset the circuit breaker. If the problem continues, call an electrician. ■ Magnetron - Try to heat 1 cup (250 mL) of cold water for 2 minutes at 100% cooking power. If water does not heat, try the steps in the bullets below. If microwave oven still does not operate, call for service. ■ Door - Firmly close door. On some models, if a packaging spacer is attached to inside of the door, remove it, then firmly close door. If a message about the door appears in the display, the door has been closed for 5 minutes or more without the microwave oven being started. This occurs to avoid unintended starting of the microwave oven. Open and close the door, then start the cycle. ■ Control - Make sure control is set properly. Make sure Control Lock is off. Make sure Demo Mode (on some models) is off. |
| Arcing in the microwave oven | <p>Check the following:</p> <ul style="list-style-type: none"> ■ Soil buildup - Soil buildup on cavity walls, microwave inlet cover, cooking rack supports, and area where the door touches the frame can cause arcing. See "General Cleaning" in "Microwave Oven Care" section. |
| Turntable alternates rotation directions | <ul style="list-style-type: none"> ■ This is normal and depends on motor rotation at the beginning of the cycle. |
| Display shows messages | <ul style="list-style-type: none"> ■ "Enter clock" with flashing digits means there has been a power failure. Reset the clock. ■ A letter followed by a number is an error indicator. Call for assistance. |
| Fan running during cooktop usage | <ul style="list-style-type: none"> ■ This is normal. The microwave oven's cooling fan, which is separate from the vent fan, automatically comes on during microwave oven operation to cool the microwave oven. It may also automatically come on and cycle on and off to cool the microwave oven's controls while the cooktop below is being used. |
| Radio, TV or cordless phone interference | <p>Check the following:</p> <ul style="list-style-type: none"> ■ Proximity - Move the receiver away from the microwave oven, or adjust the radio or TV antenna. ■ Soil - Make sure the microwave oven door and sealing surfaces are clean. ■ Frequency - Some 2.4 GHz-based cordless phones and home wireless networks may experience static or noise while microwave oven is on. Use a corded phone, a different frequency cordless phone or avoid using these items during microwave oven operation. |

WARRANTY

Whirlpool Corporation Major Appliance Warranty

ONE YEAR LIMITED WARRANTY

For one year from the date of purchase, when this major appliance is installed, operated and maintained according to instructions attached to or furnished with the product, Whirlpool Corporation or Whirlpool Canada LP (hereafter "Whirlpool") will pay for Factory Specified Parts and repair labor to correct defects in materials or workmanship that existed when this major appliance was purchased or at its sole discretion replace the product. If replaced, the product will be covered by the remaining one-year limited warranty of the original unit.

YOUR SOLE AND EXCLUSIVE REMEDY UNDER THIS LIMITED WARRANTY SHALL BE PRODUCT REPAIR AS PROVIDED HEREIN. Service must be provided by a Whirlpool designated service company. This limited warranty is valid only in the United States or Canada and applies only when the major appliance is used in the country in which it was purchased. Outside the 50 United States and Canada, this limited warranty does not apply. This limited warranty is effective from the date of original consumer purchase. Proof of original purchase date is required to obtain service under this limited warranty.

ITEMS EXCLUDED FROM WARRANTY

This limited warranty does not cover:

1. Service calls to correct the installation of your major appliance, to instruct you on how to use your major appliance, to replace or repair house fuses, or to correct house wiring or plumbing.
2. Service calls to repair or replace appliance light bulbs, air filters or water filters. Consumable parts are excluded from warranty coverage.
3. Repairs when your major appliance is used for other than normal, single-family household use or when it is used in a manner that is contrary to published user or operator instructions and/or installation instructions.
4. Damage resulting from accident, alteration, misuse, abuse, fire, flood, acts of God, improper installation, installation not in accordance with electrical or plumbing codes, or use of consumables or cleaning products not approved by Whirlpool.
5. Cosmetic damage, including scratches, dents, chips or other damage to the finish of your major appliance, unless such damage results from defects in materials or workmanship and is reported to Whirlpool within 30 days from the date of purchase.
6. Any food loss due to refrigerator or freezer product failures.
7. Costs associated with the removal from your home of your major appliance for repairs. This major appliance is designed to be repaired in the home and only in-home service is covered by this warranty.
8. Repairs to parts or systems resulting from unauthorized modifications made to the appliance.
9. Expenses for travel and transportation for product service if your major appliance is located in a remote area where service by an authorized Whirlpool servicer is not available.
10. The removal and reinstallation of your major appliance if it is installed in an inaccessible location or is not installed in accordance with published installation instructions.
11. Major appliances with original model/serial numbers that have been removed, altered or cannot be easily determined. This warranty is void if the factory applied serial number has been altered or removed from your major appliance.
12. Removal or replacement of trim, decorative panels, flooring, cabinetry, islands, countertops, drywall or other built-in fixtures that interfere with servicing, removal or replacement of the product.

The cost of repair or replacement under these excluded circumstances shall be borne by the customer.

DISCLAIMER OF IMPLIED WARRANTIES

IMPLIED WARRANTIES, INCLUDING ANY IMPLIED WARRANTY OF MERCHANTABILITY OR IMPLIED WARRANTY OF FITNESS FOR A PARTICULAR PURPOSE, ARE LIMITED TO ONE YEAR OR THE SHORTEST PERIOD ALLOWED BY LAW. Some states and provinces do not allow limitations on the duration of implied warranties of merchantability or fitness, so this limitation may not apply to you. This warranty gives you specific legal rights, and you also may have other rights that vary from state to state or province to province.

DISCLAIMER OF REPRESENTATIONS OUTSIDE OF WARRANTY

Whirlpool makes no representations about the quality, durability, or need for service or repair of this major appliance other than the representations contained in this warranty. If you want a longer or more comprehensive warranty than the limited warranty that comes with this major appliance, you should ask Whirlpool or your retailer about buying an extended warranty.

LIMITATION OF REMEDIES; EXCLUSION OF INCIDENTAL AND CONSEQUENTIAL DAMAGES

YOUR SOLE AND EXCLUSIVE REMEDY UNDER THIS LIMITED WARRANTY SHALL BE PRODUCT REPAIR AS PROVIDED HEREIN. WHIRLPOOL SHALL NOT BE LIABLE FOR INCIDENTAL OR CONSEQUENTIAL DAMAGES. Some states and provinces do not allow the exclusion or limitation of incidental or consequential damages, so these limitations and exclusions may not apply to you. This warranty gives you specific legal rights, and you also may have other rights that vary from state to state or province to province.

If outside the 50 United States and Canada, contact your authorized Whirlpool dealer to determine if another warranty applies.

6/13

For additional product information or to view FAQs (Frequently Asked Questions), visit **www.whirlpool.com**.

If you do not have access to the Internet and you need assistance using your product, you may contact Whirlpool at the number below.

Have your complete model number ready. You can find your model number and serial number on the label located on the upper or lower front facing of the microwave oven opening, behind the door.

For assistance or service, call 1-800-253-1301.

If you need further assistance, you can write to Whirlpool with any questions or concerns at:

Whirlpool Brand Home Appliances
Customer eXperience Center
553 Benson Road
Benton Harbor, MI 49022-2692

Please include a daytime phone number in your correspondence.

Please keep this User Guide and model number information for future reference.



W10573568A

W10573568A
SP PN W10573569A