

HWH® SPACEMAKER® SLIDE-OUT MECHANISM

“Universal Straight-Out Light Duty (USOLD)” Mechanism with
2.68" Wide Channel | Two Cylinders | One Synchronizing Cylinder

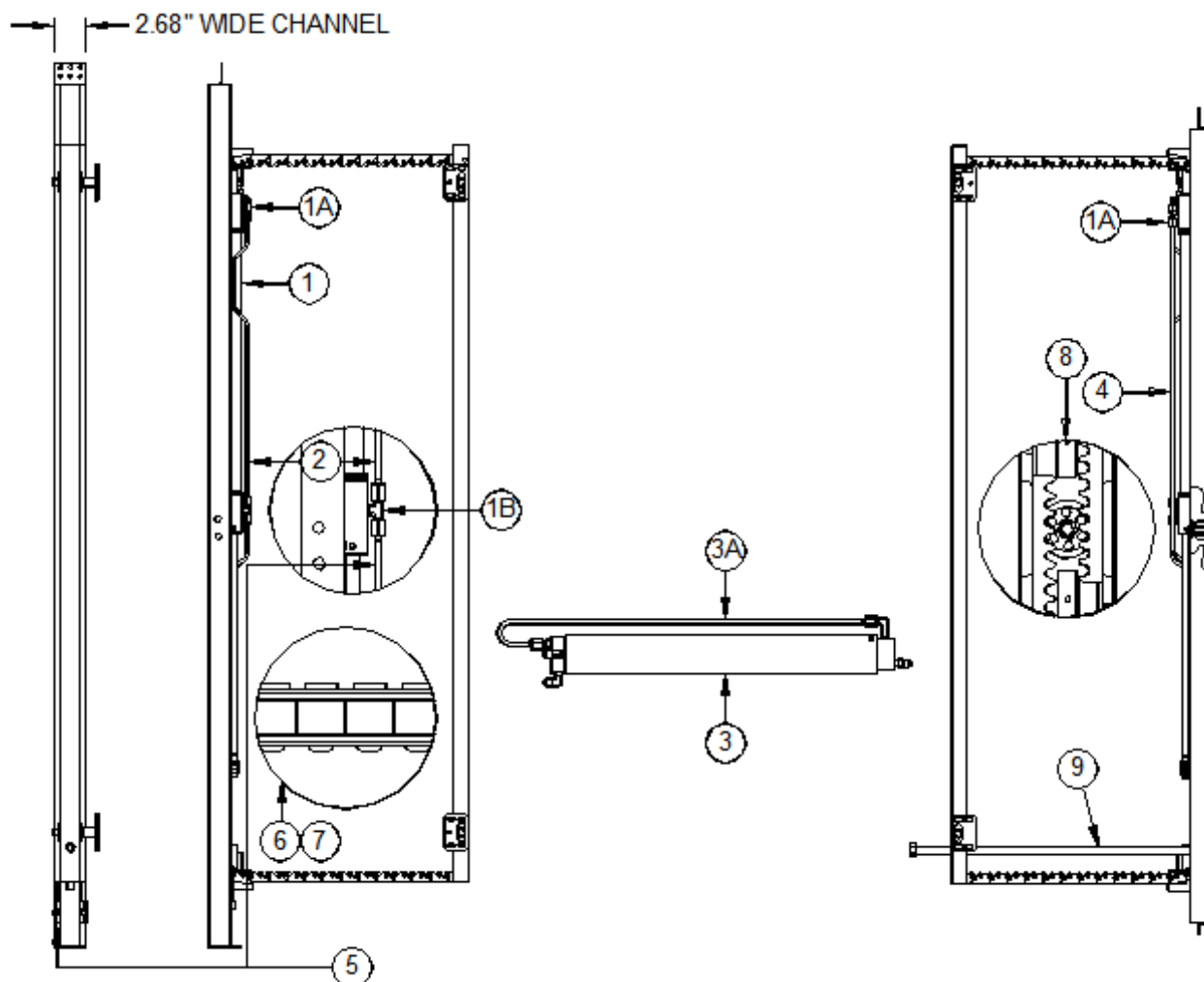
(File: MR41.2693.doc | Revised: 25JAN17)

► [Printable PDF File](#)

The diagrams below represent the **BASE MODEL SLIDE-OUT MECHANISM** as described above.

The information on this page is similar in all adaptations of the base model.

* Slide-out parts that have been adapted to OEM specifications can be found in the
OEM-Specific Parts Guide ► [MR40.HTML](#) .



ITEM	ORDER#	QTY	DESCRIPTION
1*	-	-	CYLINDER ASY
1A	RF1453	1	90 DEG MALE
1B	RF90151	1	ELBOW MALE BRANCH TEE
2*	-	-	STEEL TUBE ASY
3*	-	-	SYNC CYL
3A*	-	-	TUBE ASY SYNC CYL (IF USED)
4*	-	-	HOSE ASY OR STEEL TUBE ASY (CAP END)

ITEM	ORDER#	QTY	DESCRIPTION
5*	-	-	HOSE ASY OR STEEL TUBE ASY (ROD END)
6	-	-	CONTACT HWH®
7	-	-	CONTACT HWH®
8	RX93250	1	PINION KIT FOR RACK ASY (For replacement information on all other rack related items, contact HWH®)
9	RAP91357	1	MANUAL RETRACT SCREW 39"
	RAP91643	1	MANUAL RETRACT SCREW 30"

NOTE: Indented items included with preceding item.