

wedi Fundo Riolito

- Pre-sloped and internally waterproof linear drain shower base system
- Factory integrated linear drain trench
- Ready for tiling upon installation



General product description

Internally waterproof and pre-sloped shower floor base with factory integrated and waterproofed close-to-wall channel drainage for fast track installations that eliminate the many different steps and products involved in traditional mortar bed or semi pre-fabricated sheet – or liquid membrane system installations. Fundo Riolito can be customized in the field and cut to size fitting shower stalls smaller than the nominal size of the product. Fundo Riolito is available in select sizes featuring either four – way slope designs with even perimeter thickness for easy recessing into subfloor construction or as traditional one – way slope designs especially accommodating the use of large format tile. Fundo Riolito can be directly tiled over upon installation and there is no limitation to the size of tile or type of tile and cement based tile setting materials selected. Fundo Riolito is available with select drain cover options.

Areas of application

- New Construction of Residential/Commercial use buildings
- Renovation in Residential/Commercial use buildings
- For barrier free or curbed installations
- For customized or standard tiled showers
- Over wooden or concrete substructures

Product features

- 100% waterproof due to its extruded polystyrene (closed cell) foam core
- 100% mold and mildew proof due to the product 's natural composition.
- Precisely pre-sloped and ready to tile surface made of reinforcing fiberglass mesh embedded in a heavy duty cement resin coating performing as a strong tile backing and strong enough surface to work on during system installation and prior to tiling
- High insulating properties due to its extruded polystyrene core giving tile or stone finish surfaces a warmer touch.
- Extremely lightweight due to its rigid foam core benefitting installations over older structures and handling on construction sites.
- Easy and clean to cut to size using a circular saw or handsaw.
- Installation is extremely fast and safe due to the one piece shower base application. The product or installation requires no curing times allowing for a continuous installation process.
- Factory integrated drain trench eliminates the traditional risk of manually waterproofing single linear drain products into conventional shower floor constructions.
- Drain covers are height adjustable for a perfect finish with the tile selected
- No limitation to use of tile sizes or the type of tile
- No limitation to use of cement based thinset mortars and grouts. Product works perfectly with polyurethane or epoxy based grouts.

Substrate/ Material Preparation and Requirements Before Installation

General Limitations / Requirements (Concrete & Wood Subfloors)

- wedi Product Systems are only used for interior installations.
- Do not use as a wear surface or without tile / stone or other suitable coverings.
- Do not use organic mastic adhesives for setting tile on wedi systems in wet areas.
- Use only thinset mortar setting materials suitable for installation and adhesion to the specific substrate / subfloor type.
- Certain substrates must be primed prior to thinset mortar attachment.
- Do not use where substrate is subject to excessive moisture and moisture content changes.
- Do not use over substrates including, but not limited to: particle board, luan, asbestos, plank, bamboo, hardwood, chipboard, Sponge backed Vinyl Tile / Flooring, Laminates, Fiberglass based surfaces, Metal or Steel surfaces. Do not install over any dimensionally unstable surfaces.
- Consult wedi for questions regarding specific approved installations over substrates not listed here.
- Subfloors must be clean, even, sufficiently loadbearing and dry (cured).
- Residues, oil, waxes, grease or other contaminants acting as possible bond breakers must be removed.
- Deflection of all subfloor installations must not exceed L/360 for ceramic tile installations and L/720 for dimensional stone installations over wedi product, under consideration of live and dead loads measured between joists.
- Any leveling of the subfloor must be done prior to installing wedi product and tile. Subfloor maximum variation from plane must not exceed ¼" in 10 ft.
- wedi products should not be installed over bowl shaped, uneven structures.
- A wedi installation does not replace the need for Expansion and/ or Movement joint placement within a tile installation. Please follow recommendations found in the TCNA guidelines (Detail EJ171).
- All installations shall be in conformance with IRC for residential installations and IBC for commercial installations or applicable building codes in a region including the consideration of properly designed substrates and subfloors. All installations including the consideration of properly designed substrates and subfloors should be in compliance with current TCNA Handbook for Ceramic, Glass and Stone Tile Installation.
wedi's technical recommendations supersede all requirements of IRC, IBC, IPC or TCNA where in conflict and exceeding minimum requirements established by the above mentioned institutions.
- Contact wedi for installation of tile or stone smaller than 2" x 2" and larger than 12 x 12 inches in size to learn more about the best practices and requirements applied in such applications. Follow tile manufacturers' recommendations for appropriate flooring tile choice, setting materials and installation techniques.

Installation over structural wooden surfaces – Flooring

- The cut out for the Fundo Riolito Drain Unit around the existing floor pipe must be exactly to template provided. Floor must be reinforced from below if deflection in this area occurs which would exceed the L/360 maximum allowance.
- Plywood subfloor joist spacing must not exceed 16" o.c. with minimum thickness of T&G exterior grade plywood of 19/32 inch. Joist spacing in excess of 16" o.c. and up to 24: o.c. requires a double layer of ¾" Exterior Grade Plywood T&G subfloor sheets, glued and screwed.
- Plywood sheets must be installed with a 1/8" gap between sheets.
- Wood subfloors and structures attached to wooden subfloors must be kept dry and wood moisture content must be maintained at consistent service and use levels and must not exceed 15 %. Where constant moisture or vapor is present, ventilation must be installed to eliminate exposure of the wood structure from below the wedi product layer.

Installation over concrete /cement surfaces – Flooring

- Concrete slabs or other structural cement based substrates must be fully cured (at least 28 days but up to 3 months for new Portland cement based concrete or lightweight concrete under normal conditions, mix ratio and ambient climate). Field verification of full cure (see moisture level indicators below) is necessary to determine a full cure.
- Residual humidity must not exceed the following value per each floor type when setting wedi product and / or tile coverings:
Calcium Sulphate Screeds: 0.5 %
Calcium Sulphate Screeds, heated: 0.3 %
Cement Screeds: 3.5 %
Gypsum based underlayment: 1 % or per manufacturer recommendation
Anhydrite Screeds: 0.5 %
Conduct measures with CM device.
- Please note that wedi product systems might trap rising moisture during subfloor cure time or in general from un-isolated concrete ground floors not equipped with a vapor barrier.
- Concrete Subfloors must not be subject to hydrostatic water pressure.
- When installing wedi Fundo Riolito over a concrete subfloor please consider the possible structural impact of cutting into the concrete to allow for a recess area of the drain which must be provisioned for in the size of its oval shape (according to template provided) and 1 ¼" deep (before it connects to floor pipe). The drain must be fully supported. This can be done by floating dry pack mortar in an earth moist consistency to fill voids prior to gluing the wedi trap to the floor pipe.
- Existing cracks in subfloor must be filled and secured.
- Do not use over control and / or expansion joints subject to out-of plane movement or in- plane-movement.

Fundo Riolito Technical Properties

Fundo Riolito Shower Base Material	XPS/ Extruded Polystyrene Foam Core covered with fiberglass mesh fully embedded in a cement based resin coating
Surface Burning Characteristics; ASTM E84-04	Passed
Tensile Strength (Thinset Mortar to wedi Coating to Foam); ASTM C297	65 PSI
Shear Strength (Thinset Mortar to wedi Coating to Foam); within ANSI 118.10-1999; wet conditions	54 PSI
Waterproofness; ASTM D4068 and within ANSI 118.10-1999	Passes
Waterproofness of Assembled System; IAPMO PS 106-2015	Passes
Capillarity	0
Temperature Exposure Limits	-58°F to + 175°F
R- Value; ASTM C518	4.3hr ft. 2 F/Btu/in (R – value for 1 inch of wedi foam = 4.3
Robinson Floor Test; ASTM C627	Heavy Duty Commercial Use, Passes
Fungus & Bacteria Resistance	No Growth , Passes

Building & Plumbing Code Compliance

2015,2012,and 2009 International Plumbing Code (IPC)	Compliant
2015,2012, and 2009 International Residential Code (IRC)	Compliant
2015,2012, and 2009 International Building Code (IBC)	Compliant
2010 and 2005 National Plumbing Code of Canada	Compliant
2012 and 2009 Uniform Plumbing Code (UPC)	Compliant
2012 and 2009 National Standard Plumbing Code (NSPC)	Compliant
ANSI 118.10-2008 Load – Bearing Bonded, Waterproof Membranes for Thinset Ceramic Tile and Dimension Stone Installations	Compliant
ASME A112.6.3-2001 (R07) Floor and Trench Drains	Compliant
IAPMO PS 46-2012 Field Fabricated Tiling Kits	Compliant

Building & Plumbing Code Compliance continued

IAPMO PS 106-2015 Tileable Shower Receptors and Shower Kits	Compliant
New York City Approval OTCR	Approved
City of L.A. Approval	Approved; Report No M-100017 in reference to ICC ES PMG 1189
Illinois State Approval IDPH	Approved
Michigan State Approval	Approved ; Report 1625-PA
Wisconsin State Approval	Approved, File 20130265
Massachusetts State Approval	Approved; P3-0315-306 & P3-0315-306
Worldwide Approvals Quality Management & Control	ISO 9001-2008
North- America Approvals Code Compliances & Quality Management	ICC ES PMG 1189

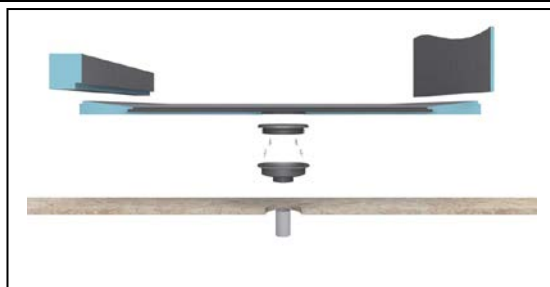
Drain Technical Properties

Factory integrated and waterproofed drainage channel with trap connection (compression fit). Trap unit to be cement glued to 2" Schedule 40 floor pipe.

Fundo Riolito Drain Material	ABS
------------------------------	-----

Code Compliance (International Plumbing Code/ IPC): ASME 112.6.3-2001 (R07); ASME A112.18.2 (no liner/no bonding flange / no weepholes needed with wedi system)

Compliant (ICC PMG 1189)



Channel Covers Technical Properties

wedi Fundo Riolito Standard Channel Cover	Stainless Steel 304; Polished
wedi Fundo Riolito Exclusive Channel Cover	Stainless Steel 316; Brushed
wedi Fundo Riolito Tileable Channel cover	Stainless Steel 304; matte

The channel covers are available in three variants: Standard, Exclusive and Tileable. They are height adjustable from 3/16" to 7/8" to match tile installation height on shower base floor.

The Product Range

wedi Fundo Riolito Shower Base	External Dimensions Length x Width x Height	Channel Length	Item #
Fundo Riolito, floor base, with channel drain	36" x 60" x 2 3/8" incl. drain, four-way slope	43 5/16"	75100016
Fundo Riolito, floor base, with channel drain	48" x 60" x 2 1/2" incl. drain, four-way slope	27 1/2"	75100012
Fundo Riolito, floor base, with channel drain	48" x 72" x 2" incl. drain, four-way slope	43 5/16"	75100014
Fundo Riolito, floor base, with channel drain	32" x 72" x (2 3/4" – 1 3/8") incl. drain, single slope (one-way slope)	27 1/2"	75100015
Fundo Riolito, floor base, with channel drain	32" x 72" x 2 3/4" incl. drain, two-way slope, drain 12" offset	27 1/2"	75100035
Fundo Riolito Shower KIT	32" x 72" x (2 3/4" – 1 3/8") incl. drain, single slope (one-way slope); incl. wedi Building Panel, wedi Curb, wedi Fasteners, wedi Joint Sealant	27 1/2"	US4000010
Cover Standard	Width x Length x Height	Unit	Item #
Fundo Riolito Standard drain cover for 36" x 60" and 48" x 72" Riolito base	1 5/8" x 43 1/4" x 3/4"	1 pc	676797045
Fundo Riolito Standard drain cover for 48" x 60" and 32" x 72" Riolito base	1 5/8" x 27 5/8" x 3/4"	1 pc	676797048
Cover Exclusive	Width x Length x Height	Unit	Item #
Fundo Riolito Exclusive drain cover for 36" x 60" and 48" x 72" Riolito base	1 5/8" x 43 1/4" x 3/4"	1 pc	676797046
Fundo Riolito Exclusive drain cover for 48" x 60" and 32" x 72" Riolito base	1 5/8" x 27 5/8" x 3/4"	1 pc	676797049
Cover Tileable	Width x Length x Height	Unit	Item #
Fundo Riolito Tileable drain cover for 36" x 60" and 48" x 72" Riolito base	1 5/8" x 43 1/4" x 3/4"	1 pc	676797047
Fundo Riolito Tileable drain cover for 48" x 60" and 32" x 72" Riolito base	1 5/8" x 27 5/8" x 3/4"	1 pc	676797050



Standard Cover



Exclusive Cover



Tileable Cover

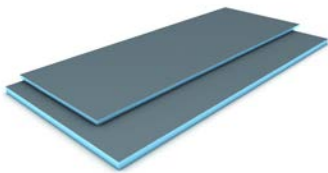


Scope of Delivery

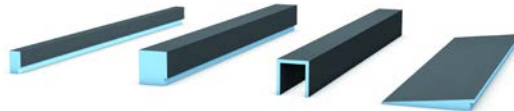
The wedi Fundo Riolito Unit includes the Shower Base and the Drain Unit Assembly. The Channel Covers are separately available in three variants: Standard, Exclusive and Tileable.

Complementary Products to build an entire wedi Riolito Shower System

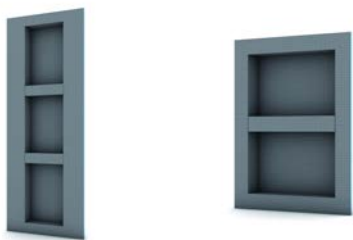
wedi Building Panel to provide a
waterproof Tile Backer for the walls



wedi Curbs and Ramp



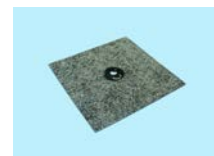
wedi Recess Niches to provide storage
for Shampoo and Utensils



wedi Seats & Benches to upgrade Showers



wedi Installation Accessories: Sealants, Fasteners & Tools



Specialty Applications with wedi Fundo Riolito

- Extending wedi Fundo Riolito

wedi offers pre-sloped Extension panels which are available in two sizes and are designed to fit most wedi Fundo shower floor elements. These panels come with pre-made notch connections to safely seal to a Riolito base and serve as an extension of the shower floor. These extensions connect at a height of 1 ½" to the perimeter of a Fundo base featuring an even perimeter. Naturally, they cannot be used along the long sides of wedi Fundo Riolito models which feature a one or two – way slope as these do not provide an even perimeter.

In addition, please make sure to increase the installation height of any extension panel which connects to wedi Fundo models which feature a perimeter thickness of more than 1 ½ inches. This can be done easily using a ½" wedi building panel (choose appropriate thickness) and installing it under the extension panel.



Fundo Extension	24" x 48" ; sloped ¼" / ft along 24" length	One -way slope	73783528
Fundo Extension	12" x 72" ; sloped ¼" / ft along 12" length	One- way slope	73783523

- Cutting wedi Fundo Riolito to size

wedi Fundo Riolito Shower Bases may be cut to size to make the fit a floor pipe location or the overall framed shower area. Cuts can be made in clean ways by simply using a circular saw or handsaw. When using a circular saw please make sure to use a carbide or diamond blade as you are cutting through the base's cement surface. Due to the sloped surface and design of the wedi slope in all 4 – way slope models, we recommend to not cut off more than 6 inches of either side of the wedi Fundo Riolito bases (This requirement is not active when cutting off the long sloped area of wedi's single slope models (one way and two way sloped). When intending to cut the Riolito base in the area of the base's channel drain, please note that the channel is factory integrated and in part extends inside the base and flanges extend below the surface coating. When turning the Riolito shower base on its back you will note the installation panel (seams) for the drain channel visible only from below. Any cutting of the Riolito base may proceed if the cutting line is at minimum 1 inch away from the drain channel installation panel and towards the main shower base area. Once cut to fit, the base perimeter's notch channel (Z notch) must be re-created and be ½" wide x at least ½" deep (depends on depth of adjacent channels and model) in dimension. Newly made channels should horizontally align with adjacent channels so it is recommended to mark the existing and adjoining channels depth as the lowest cutting point/depth prior to using a straight edge and a utility knife to cleanly cut out the new channel by cutting horizontally into the base edge ½" deep. A circular saw with adjusted blade depth should be used to cut at least ½" deep into the base surface (½" away from edge of base).

When measuring for the Fundo Riolito's fit into the shower area please start out by measuring from the existing floor pipe's center and from there to all walls (inside of framing) and the line at which the wedi curb would start (note: the wedi curbs are designed to fully interlock into the Fundo Riolito base channel (1/2" or deeper) which is important to consider when planning the overall dimensions of the shower structure to be built and including the curb).

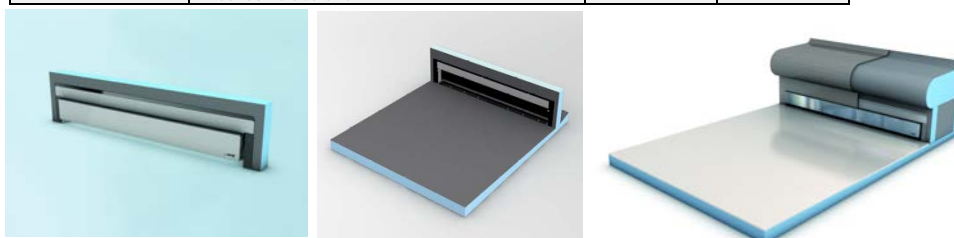
Please make sure the Fundo Riolito base always fits in tightly and square against the length of all (framed or other) walls leaving only a maximum gap of 1/8" if unavoidable. This ensures a tight connection to wedi Building Panels and a proper support and (framed) wall backing of the transitional area from shower base into wall tile backer area.

Try to avoid cutting wedi Fundo Riolito to fit into out of square installation areas. While you may be able to install the wedi shower system safely the procedure of making product work to attach to out of square areas and surfaces will continue into the finish tile installation and the appearance of the finished work may suffer. It is recommended to square all areas before installation of the wedi system to provide a professional and efficient starting point for the entire installation.

• Upgrading the Riolito linear floor channel drain to a wall drainage

Select wedi Fundo Riolito Models qualify to fit to wedi's wall drain module Fundo Discreto. This module , when installed over the linear channel, covers the floor drain and creates a wall drainage look . The Discreto module can be installed as a part of a bench or foot rest. Qualifying Riolito models are

Fundo Riolito, floor base, with channel drain	48" x 60" x 2 1/2" incl. drain, four-way slope	27 1/2"	75100012
Fundo Riolito, floor base, with channel drain	32" x 72" x (2 3/4" – 1 3/8") incl. drain, single slope (one-way slope)	27 1/2"	75100015
Fundo Riolito, floor base, with channel drain	32" x 72" x 2 3/4" incl. drain, two-way slope, drain 12" offset	27 1/2"	75100035
Fundo Riolito Shower KIT	32" x 72" x (2 3/4" – 1 3/8") incl. drain, single slope (one-way slope); incl. wedi Building Panel, wedi Curb, wedi Fasteners, wedi Joint Sealant	27 1/2"	US4000010



Sustainability & Environmental Considerations

- wedi's product is rated by the International Panel on Climate Change (IPCC) with a Global Warming Potential of 1 (no negative impact considering its entire lifetime including its production process, its use in application and its ultimate disposal). wedi's extrusion agent is CO₂. No CFC as commonly used with foam extrusion is utilized.
- wedi refrains from using global warming halogenides, negatively impacting global warming and commonly found in foam products , in its wedi foam product.
- wedi's highly automated manufacturing facilities source electric power exclusively from energy sources producing renewable energy such as from water, wind, solar.
- All foam material waste occurring during the manufacturing processes is recycled and used to manufacture lightweight cement floor filler products.
- wedi polystyrene foam ingredients consist of recycled material at a rate of 25%.
- wedi's waterproof product systems protect wet room tile & stone installations against deterioration and mold due to water exposure damages and increase the average lifetime of wetroom installations such as showers , this conserving energy and material. The maintenance, cleanliness and added value to surfaces, air quality as well as general health of users is provided by the natural mold protection offered by wedi product.
- wedi product offers insulation properties and will help conserving energy when product is used on walls as well as on cold floor substrates and/ or with floor warming systems.

Warranty Information

Please refer to wedi's 10 year limited warranty on www.wedicorp.com

Please note that the International Plumbing Code requires a waterproof transition from waterproof shower base into the wall. This can be done by installing wedi's waterproof Building Panel (as the tile backer board) and wedi's waterproof curbs. The assembly and transitional seams have to be sealed with wedi joint sealant, a wedi engineered MS Polymer sealant and adhesive. Please note: There is no suitable alternative to wedi's joint sealant.

MasterFormat™ 2004 Sections

Section 09305 Tile Setting Materials and Accessories

Section 10185 Shower Compartments

Section 09300 Tile

Storage

Store flat, cool and not exposed to weather. Store in original , protective packaging.

Health & Safety information

Work appropriate work wear , gloves and safety glasses. Product contains cement. Please consult the wedi Material Safety Data Sheet (MSDS) "wedi Fundo" on www.wedicorp.com.

Information about finishing and application options for wedi products, technical recommendations or advice and other information provided by our employees (technical usage advice) is accurate to the best of our knowledge, but is non-binding and is given with the exclusion of any liability. It does not exempt our customers and their buyers from carrying out their own checks and trials on the suitability of the products for the intended processes and purposes.

Installation of wedi Fundo Riolito System incl. Drain Unit and Covers

Drain to Base Assembly

Legend

- A Curb
- B wedi Fundo Riolito/Riofino
- C Building Panel
- D Sealing collar
- E Screws
- F Drain body



Tools

- Bucket
- Notch Trowel
- Drill with Thinset Mixer
- Utility Knife
- Straight Edge/T Square 5 ft or longer
- Speed Square
- Caulk Gun
- Handsaw
- Flat Head Screwdriver
- Cordless Drill or Hammer
- Solid Putty Knife
- Paper Towels
- Level
- Circular Saw
- Saw Horse
- Tape Measure
- Permanent Marker
- Extension Cord for Powertools
- ABS or multipurpose pipe cement glue
- Inside PVC Pipe Cutter
- Shop vacuum cleaner

Before Installation

- Subfloor is sound, level and meets deflection criteria. Wooden or concrete structural substrates are dry and loadbearing. Steel framing is loadbearing.
- Floor joists not to exceed 16" o.c. Subfloor panels 3/4" T&G EGP or equivalent.
- If Shower base is to be installed floor level, make sure you build out a stable depression and deep enough to receive base + thin set
- 2" Floor pipe is cut 1 1/4" below surface of subfloor.
- The cut out in the subfloor to receive the drain trap is made using the wedi supplied, oval shape template.
- 2" drain assembly below floor is stabilized and will not sink under water load
- Make sure wedi drain and 2" pipe is safely connected using ABS/PVC multi use or ABS cement. wedi's drain is made of ABS.
- Only wedi products (wedi sealant, wedi fasteners, wedi building panel, wedi curb, wedi ramp) are used for wedi Fundo Riolito/Riofino assembly.
- Installer has been instructed by wedi staff or has been informed about proper wedi assembly steps through wedi installation brochure and video.
- Have 2 x 4 blocking installed vertically between studs along the bottom perimeter of framing to back the bottom of wedi wall panels
- wedi shower bases can be cut to size using a skilsaw. The Z notch channel must be remade. Remove all sawdust and contaminants from base and channels.

Assembly Instructions

wedi Fundo Riolito/Riofino

Installing wedi® Fundo Shower Base onto wooden or concrete floors



1 Cut the 2" pipe 1 1/4" below the top of the Subfloor. Use the oval shape cutting template to cut subfloor using a jigsaw to allow wedi drain trap to be inserted and connected to floor pipe using appropriate ABS compatible or multipurpose cement glue. Please also check cement glue compatibility to floor pipe material. The drain and trap have to be secured to the subfloor.



2 Assemble the drain unit following the instruction drawing. wedi's Riolito bases can be cut to size on all sides making drain positions close to the wall possible. Please do not cut into the linear drains plastic flange integrated into the coated foam part of the base. Once cut the 1/2" x 1/2" channels at the new base perimeter must be reestablished.



3 Glue and seal the wedi drain trap to the 2" pipe. Mount the sealing collar to the wedi Riolito/Riofino underside counterpart using a manual Phillips screwdriver.



4 Apply a skim coat and finally a combed through bed of a thinset using modified thinset ANSI 118.4 and 1/4" x 1/4" notch trowel.



5 Trowel the thinset on the rear side of the Fundo again using a 1/4" x 1/4" notch trowel.



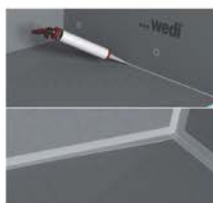
6 Press the Fundo firmly into the thinset bed, ensuring that the installation is level and void free. Ensure wedi drain's sealing gasket is firmly inserted in the wedi trap. Apply some weight equally and for at least 30 minutes (thinset bags).



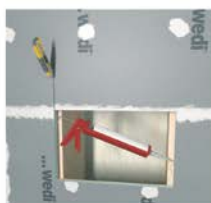
7 Set up a continuous 1/2" bead of wedi point sealant at the perimeter channel and only in areas where you can immediately install a wedi building panel into the fresh sealant.



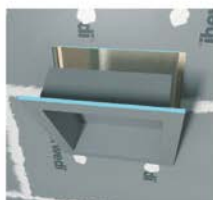
8 Push the wedi panel all the way into the channel of the shower base channel and its bead of sealant. Remove pushed out sealant on inside seam using a putty knife. Fasten the panels directly to the studs starting 1 ft above the base and at a rate of 1 fastener per 1ft. One extra fastener is set into the seam to the next panel to create a flush transition.



9 Apply continuous $\frac{1}{2}$ " beads of sealant between all connections of panels and install with tightly butted seams. Excess sealant must be spread flat with a putty knife. All seams and fastener heads in the assembly are covered with a secondary $\frac{1}{2}$ " bead of sealant and spread flat. The seams should be covered $\frac{3}{4}$ " to 1" on either side of seam. All fastener/washers are covered with sealant stretching 1" over the washer edges.



10 wedi Niches are installed in a cut out in the wedi wall and attached with it's flange right into the center of 16 o.c. studs. wedi sealant is set along the connection of wall to niche.



11 2 Fasteners each side of the niche are set to create a flush transition to the wall panels. Another $\frac{1}{2}$ " bead of wedi sealant is spread over fasteners and seams.



12 A continuous $\frac{1}{2}$ " bead of sealant is set into the channel and along the vertical curb notch part. A circle of $\frac{1}{2}$ " sealant bead is set against the wall panels where the curb attaches. A $\frac{1}{2}$ " x $\frac{1}{2}$ " bed of thinset mortar is applied to the subfloor. The tightly cut to fit curb is pressed into the connection. Weight is applied on and against the curb (from outside) and another $\frac{1}{2}$ " bead of sealant is applied over all curb seams and spread flat. The seams must be covered $\frac{3}{4}$ " to 1" either side of a seam.

After Installation

- All bottom perimeter joints, curb joints, vertical and horizontal panel joints are visibly covered with wedi sealant. Coverage should be continuously visible for at least $\frac{3}{4}$ " to 1" on each side of the joint.
- No mastic adhesives are to be used to install tile in wedi shower systems.
- Ceramic tiles smaller than 2"x2" must be grouted using epoxy grout. River Rock or Pebble Stones must be grouted with a modified cementitious sanded grout.
- Large format tile can be used on wedi Fundo bases. The tiles must be cut where the slope fields meet unless a single slope model is used.
- When complete wedi shower system is installed with wedi joint sealant, a water flood test may be performed only 2 hours after final application of wedi joint sealant (application temperature must be ambient / interior with normal relative humidity and temperatures above 40°F).

Additional Best Practices / Tips when installing wedi Fundo Riolito

- Skimcoat wedi curb bottom surfaces with thinset mortar prior to attaching the curb into the troweled thinset mortar on the subfloor.
- Seal all openings in your wedi wall building panels (shower valves/shower head pipes) as water in the thinset layer below the tile may escape through those openings inflicting damage to framing.

Assembly instructions

wedi Fundo Riolito/Riofino

Installation instructions wedi Fundo Riolito Drain Cover

General information

- A Drain Cover Fundo Riolito standard: Polished Stainless Steel Standard Version
- B Drain Cover Fundo Riolito exclusive: High Grade Stainless Steel Version
- C Drain Cover Fundo Riolito tileable: Can be tiled with epoxy glue/adhesive. Can be used for 1/4" and 1/2" tile/stone (reverse cover)
- D Drain cover can be adjusted from + 5 mm to + 25 mm from Riolito base surface



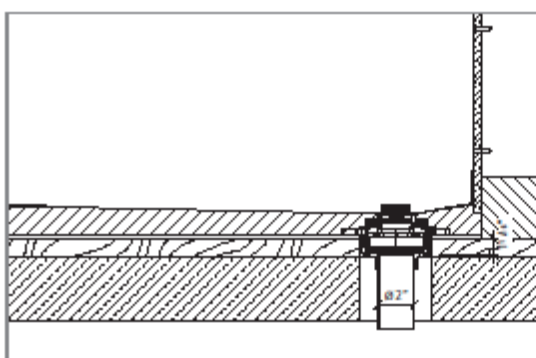
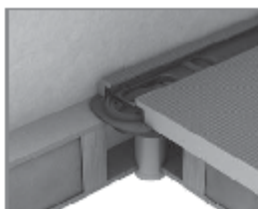
Special considerations during and after installation

- i** • Where wedi building panel or curb overs/caps are installed over horizontal surfaces (seats, curbs, tubdeck transitions) do not set any fasteners and do not allow the glass door installation to penetrate the wedi panel as it is your waterproofing.
- Make sure that doors are installed tight to contain water inside the shower. Make sure doors are installed to only load bearing reinforced framing.
- Where wedi building panel is installed over corners of a structure showing an angle other than 90° please miter the board edges to gain adhesion surface. Utilize a wedi sealing tape in addition to regular sealing for safety.

wedi Fundo *Riolito-ueo*

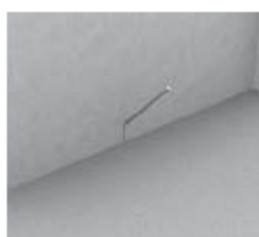
Vertical Drain for 2" ABS pipe connection

...wedi®



Art.-No. 07-70-00/040

Installation instructions wedi Riolito^{neo} vertical Drain



1 Mark center of drain at wall.



2 Use wedi template to mark cut out for drain body recess in subfloor.



3 Use jigsaw to cut out for drain recess.



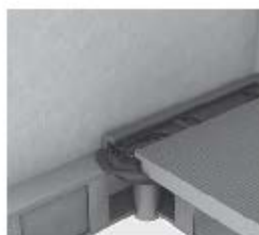
4 Recess wedi drain body and connect to ABS floor pipe using ABS cement glue. Fasten wedi drain pipe to subfloor using regular wedi wall panel screws. Over concrete floors adhere wedi drain body using wedi joint sealant instead.



5 Install wedi sealing gasket to underside of wedi base using the screws included in wedi drain box. Use a larger size MANUAL SCREW-DRIVER to safely tighten the gasket.



6 Install wedi base into thinsit setting bed so that gasket on underside of base will safely drop into the drain body resting on the subfloor.



7 Make sure no thinsit is pushed into the drain opening/area and that the gasket is firmly and entirely received in the drain body and in even position.



wedi Fundo *Riolito/Riofino*

linear channel cover standard | barrette standard | tapa de desagüe standard

linear channel cover exclusive | barrette exclusive | tapa de desagüe exclusiva

For installation instructions in
Spanish or French please go to
www.wedincorp.com



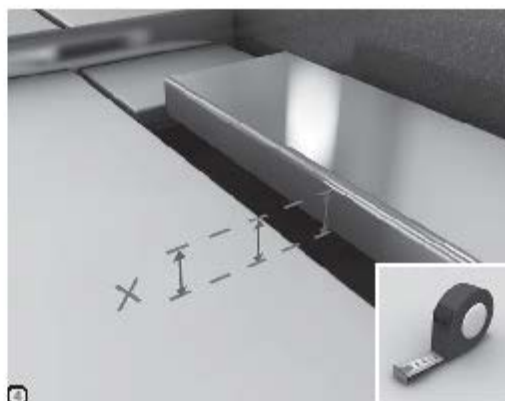
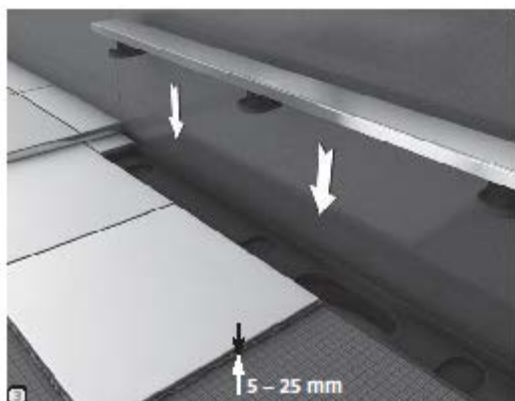
wedi Fundo Riolito/Riofino

Linear channel cover standard/exclusive | barrette standard/exclusive | tapa de desagüe standard/exclusiva

Assembly items and tools needed



Installation instructions wedi Fundo Riolito linear channel cover





...wedi

wedi corporation
171 South Gary Avenue - Carol Stream, Illinois 60188
Tel.: +1-847-357-9815 - Fax: +1-847-357-9819
info@wedincorp.com - www.wedincorp.com

© 1994 K. W. M. A. 8113307 wedi instructions are given according to best current knowledge and according to independent testing with wedi resin in the light of change technical recommendations due to product changes or building code changes.



wedi Fundo *Riolito/Riofino*

linear channel cover tileable | barrette à carreler | tapa de desagüe alicatable

For installation instructions in
Spanish or French please go to
www.wedincorp.com



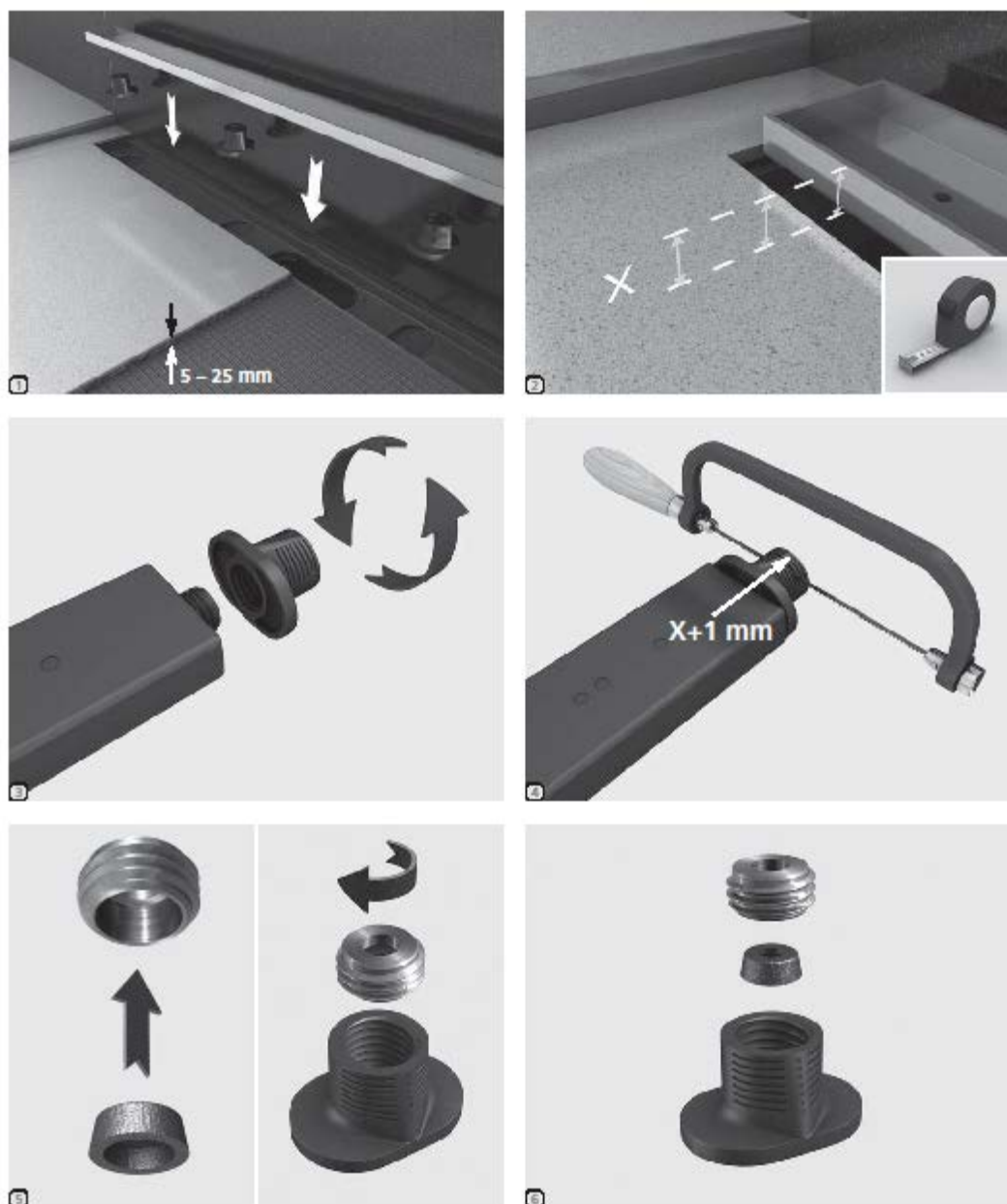
wedi Fundo Riolito/Riofino

Linear channel cover tileable | barrette à carreler | tapa de desagüe alicatable

Assembly items and tools needed



Installation instructions wedi Fundo Riolito linear channel cover





wedi corporation
171 South Gary Avenue - Carol Stream, Illinois 60188
Tel.: +1-847-357-9815 - Fax: +1-847-357-9819
info@wedincorp.com - www.wedincorp.com

© 1914 K 1014 A 811327 wedi instructions are given according to best current knowledge and according to independent technical tests. wedi reserves the right to change technical recommendations due to product changes or third party patent changes.

Technical Drawings

