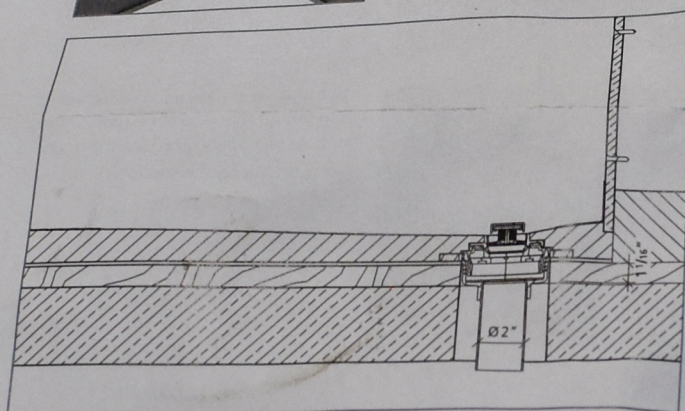
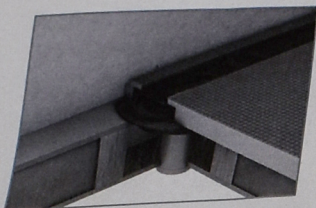
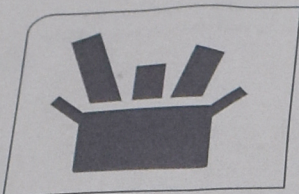


wedi Fundo *Riolito* <sup>neo</sup>  
Vertical Drain for 2" ABS pipe connection



... wedi®

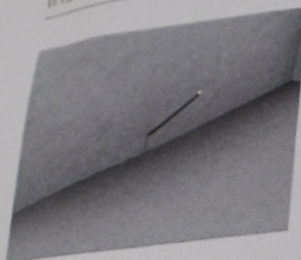


Art.-No. 07-70-00/040

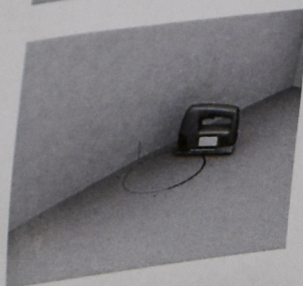


# Installation instructions wedi Riolito<sup>neo</sup> vertical Drain

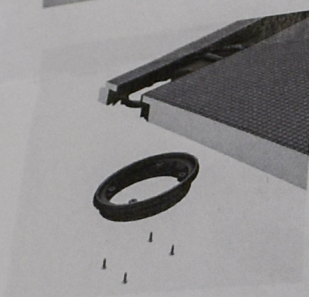
1 Mark center of drain at wall.



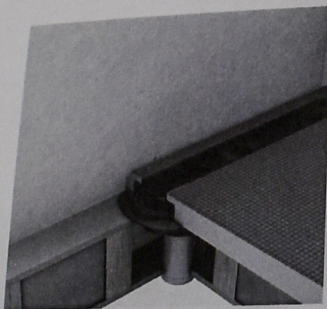
3 Use jigsaw to cut out for drain recess.



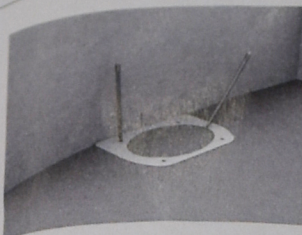
5 Install wedi sealing gasket to underside of wedi base using the screws included in wedi drain box. Use a larger size MANUAL SCREW-DRIVER to safely tighten the gasket.



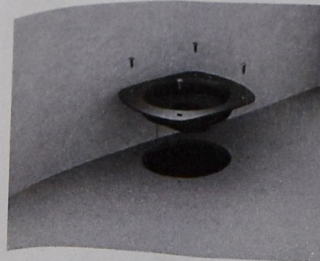
7 Make sure no thinset is pushed into the drain opening/area and that the gasket is firmly and entirely received in the drain body and in even position.



2 Use wedi template to mark cut out for drain body recess in subfloor.



4 Recess wedi drain body and connect to ABS floor pipe using ABS cement glue. Fasten wedi drain pipe to subfloor using regular wedi wall panel screws. Over concrete floors adhere wedi drain body using wedi joint sealant instead.



6 Install wedi base into thinset setting bed so that gasket on underside of base will safely drop into the drain body resting on the subfloor.

