

# PARTS LIST

for

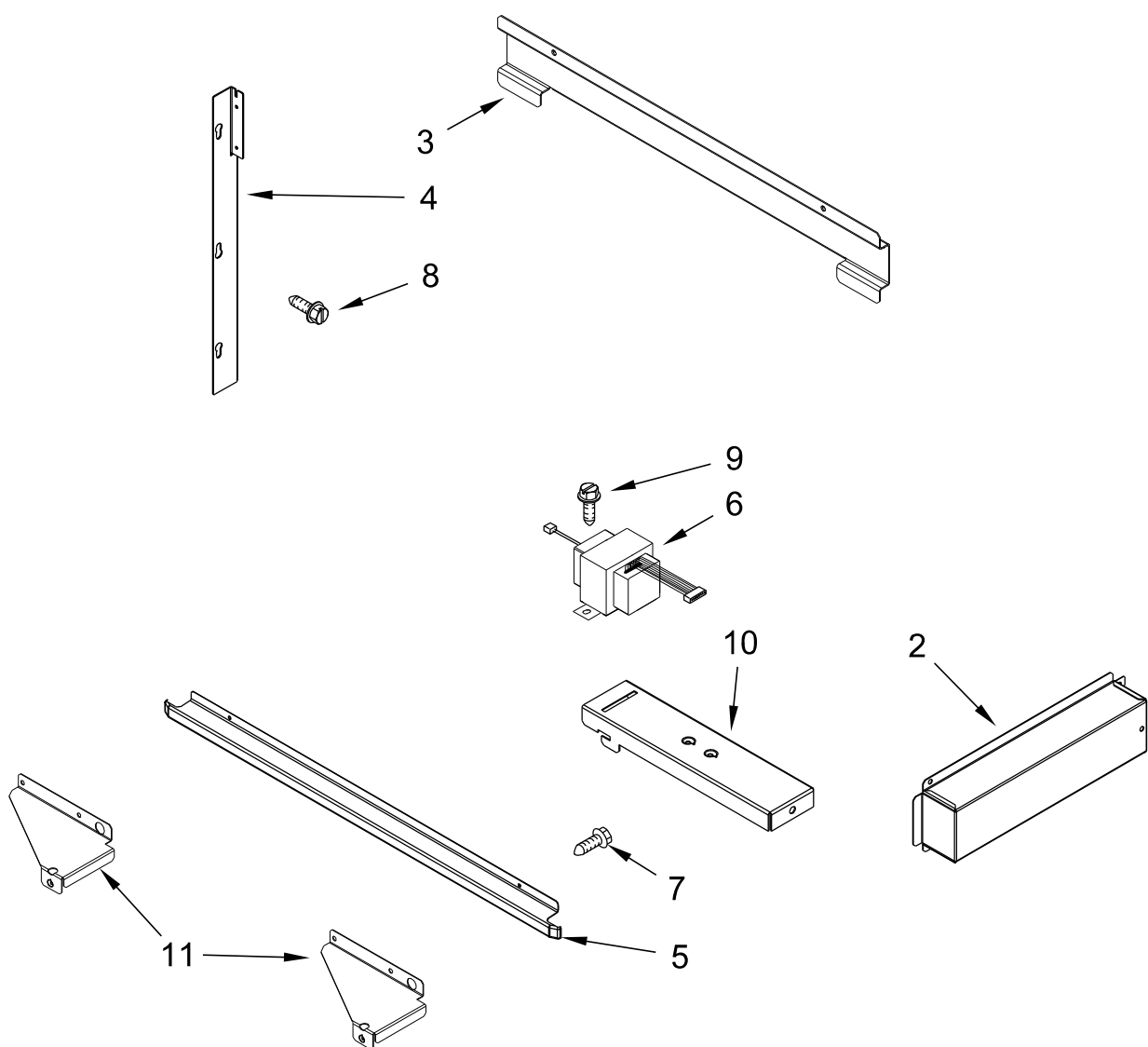
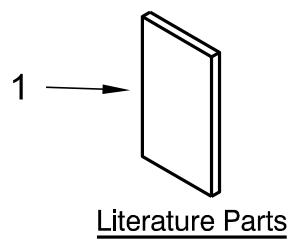
# **KitchenAid<sup>®</sup>** **30" BUILT-IN MICROWAVE**

**Models:**

**KBHS109BSS00 (Stainless)**

**FOR CUSTOMER SATISFACTION ALWAYS USE  
FACTORY SPECIFICATION PARTS**

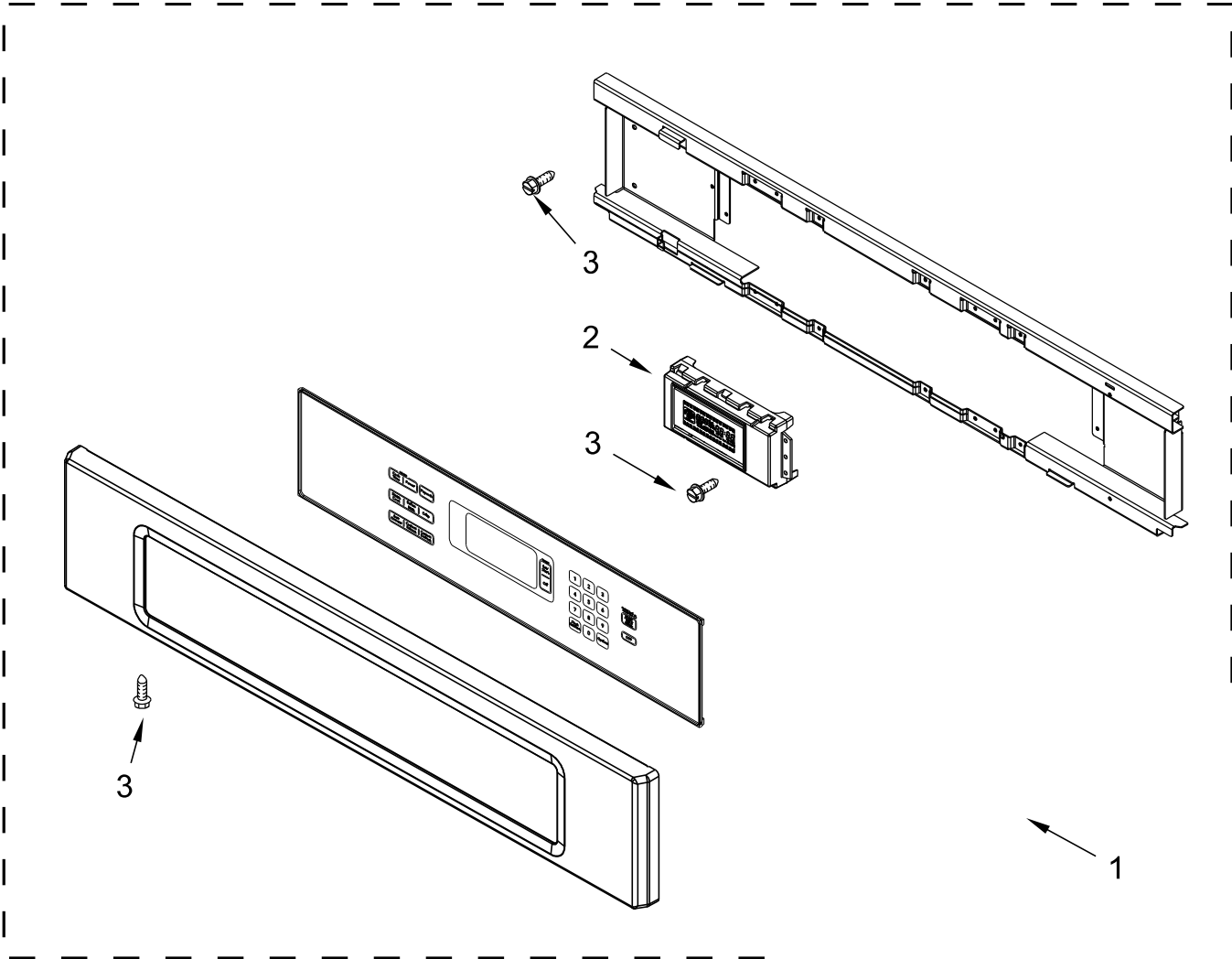
# OVEN PARTS



# OVEN PARTS

<u>Illus.</u> <u>No.</u>	<u>Part No.</u>	<u>Description</u>
1		Literature
	W10351317	Installation Instructions
	W10075750	Instructions, Installation (English/French)
	W10354195	Use and Care Guide ( Microwave Oven )
	W10220960	Tech Sheet
	W10220961	Tech Sheet (French)
2	W10239155	Box, Conduit
3	W10420960	Support, Microwave Module
4		Rail, Mounting Side
	W10416255	Right Hand
	W10416256	Left Hand
5	W10420958	Trim, Bottom
6	W10354050	Transformer, Microwave User Interface
7	3400832	Screw 8-18 x .375 MTR BLACK
8	7101P653-60	Screw 8-18 S6 X 3/8
9	90767	Screw 8-18 X .375 HW AB
10	W10323725	Plate, Mounting Transformer
11		Bracket, Support
	W10239156	Front Left Hand
	W10239157	Front Right Hand

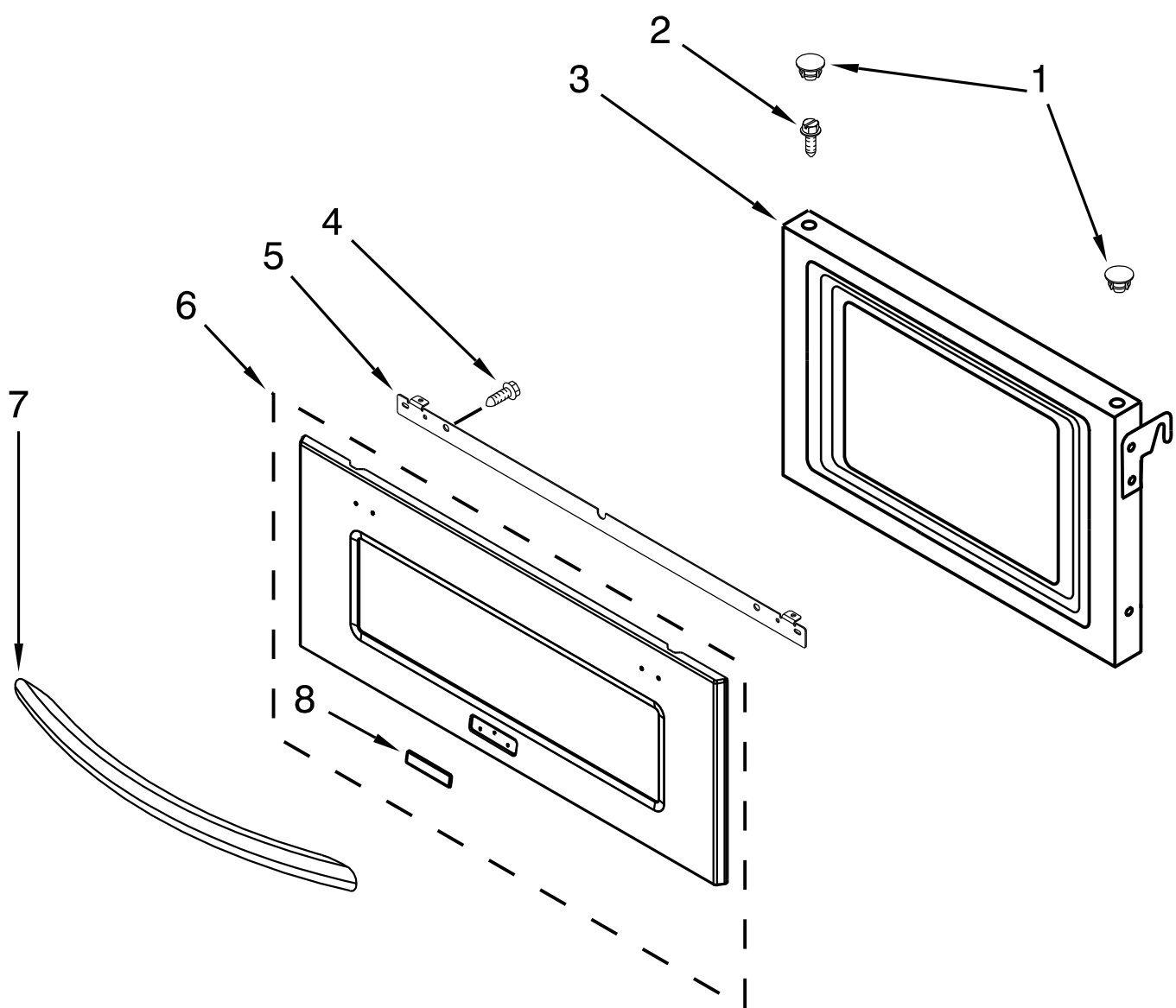
# CONTROL PANEL PARTS



# CONTROL PANEL PARTS

<u>Illus.</u> <u>No.</u>	<u>Part No.</u>	<u>Description</u>
1	W10420954	Panel, Control Assembly
2	W10434461	User Interface
3	3400832	Screw 8-18 x .375 MTR BLACK

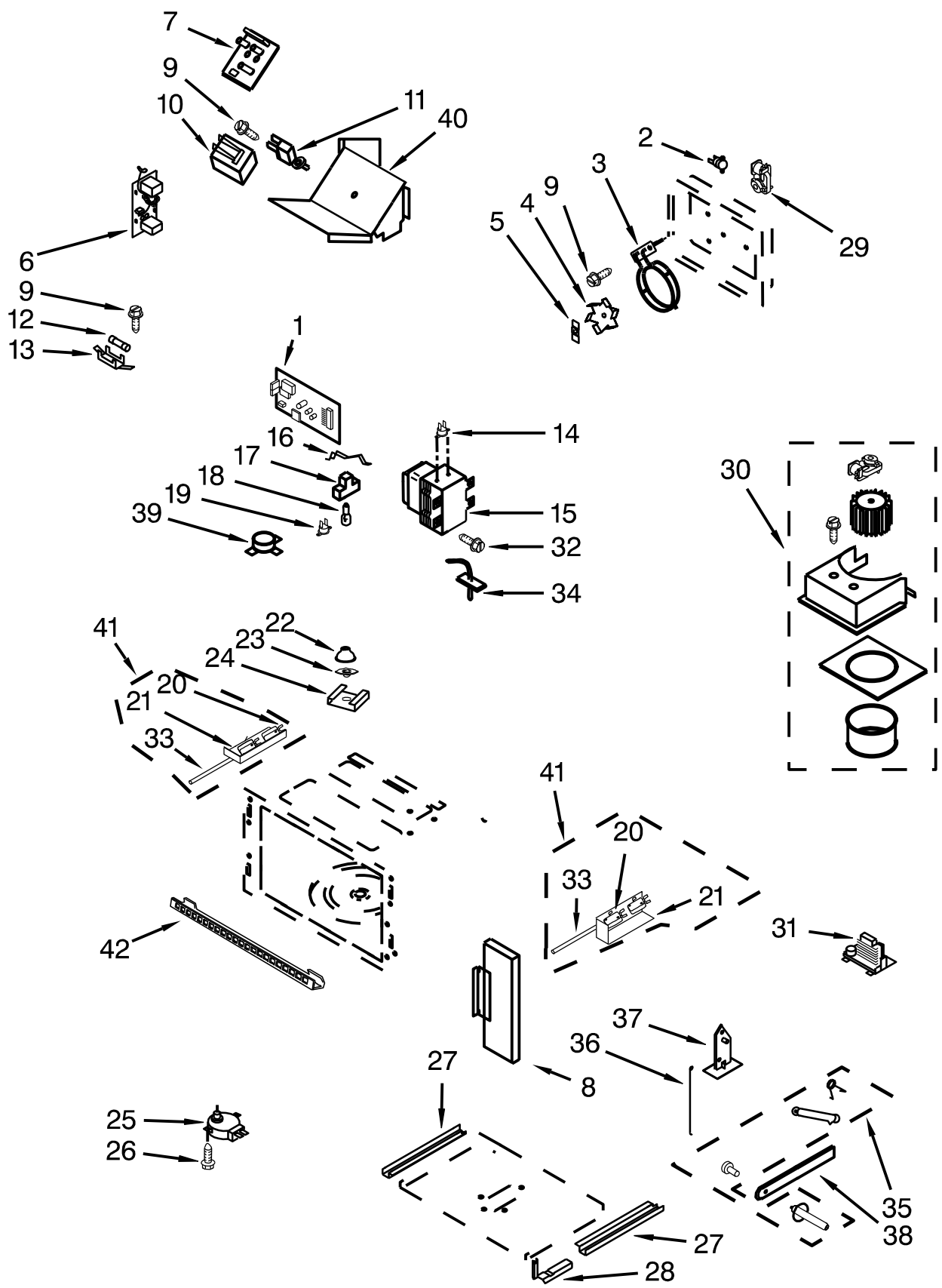
# DOOR, MICROWAVE



# DOOR, MICROWAVE

<u>Illus.</u> <u>No.</u>	<u>Part No.</u>	<u>Description</u>
1	8304588BL	Cap, Screw
2	W10143304	Screw
3	W10486210	Door, Inner
4	8533988	Screw 8-32 X .750 TR SC BLACK
5	W10359769	Foam, Handle
6		Glass Assembly, Outer Door
	W10420952	Stainless
7		Handle, Door
	W10289076	Stainless
8		Nameplate
	W10243391	Stainless

CABINET AND STIRRER PARTS

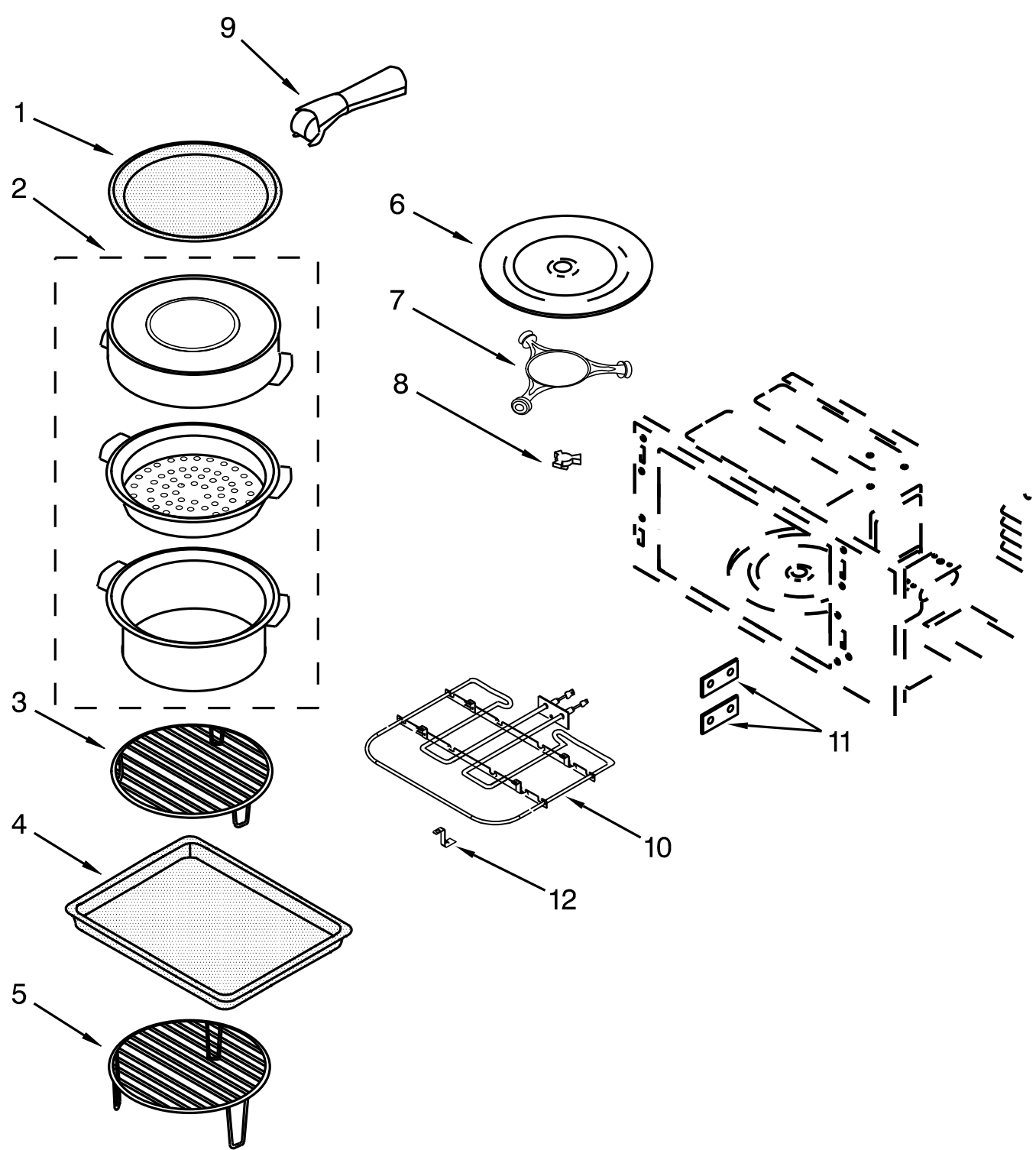




# CABINET AND STIRRER PARTS

<u>Illus.</u> <u>No.</u>	<u>Part No.</u>	<u>Description</u>	<u>Illus.</u> <u>No.</u>	<u>Part No.</u>	<u>Description</u>
1	W10510103	Appliance Manager Microwave	35	W10128850	Sliding Arm Assembly
2	W10120223	Thermostat	36	8205704	Spring, Torsion
3	W10493735	Heater, Convection Element	37	8205686	Support
4	4375418	Fan, Convection	38	W10120236	Sliding Arm
5	W10120233	Nut, Speed	39	W10389448	Sensor, Humidity
6	W10486187	Noise Filter	40	W10389596	Duct, Magnetron
7	W10120228	Control, Electric Converter, Wide	41	W10358241	Harness, Interlock Switch Assemblies
8		Trim, Side	42	W10486211	Vent, Top Microwave
	W10486208	Left Hand			
	W10486209	Right Hand			
9	W10131249	Screw			
10	8205692	Transformer			
11	4375427	Thermoactuator			
12	4375321	Fuse			
13	4375231	Block, Fuse			
14	W10287986	Thermostat			
15	W10120113	Magnetron			
16	W10475855	Spring, Lamp			
17	8205658	Housing, Lamp			
18	W10287972	Lamp, Halogen			
19	W10389447	Thermostat			
20	W10330566	Switch			
21	8205683	Holder, Switch			
22	4375320	Reflector			
23	4375318	Lens, Lamp			
24	W10120231	Clip. Spring			
25	W10510101	Motor, Turntable			
26	4375202	Screw			
27	8205707	Support, Bottom			
28	W10510097	Hinge, Door			
29	W10493733	Motor, Convection Fan			
30	W10330572	Blower Assembly			
31	W10510105	Inverter			
32	W10130890	Screw			
33	W10120235	Rod, Release			
34	W10287987	Sensor, Convection			

INTERNAL MICROWAVE PARTS



# INTERNAL MICROWAVE PARTS

<u>Illus.</u> <u>No.</u>	<u>Part No.</u>	<u>Description</u>
1	W10330573	Plate, Crisp
2	W10120484	Steamer
3	4452220	Rack, Convection Microwave
4	W10120486	Plate, Baking
5	W10120483	Rack, Convection
6	8205676	Tray, Cook
7	W10486179	Ring
8	8205677	Drive, Turntable
9	W10120481	Handle, Pan
10	W10387651	Element, Grill
11	W10120230	Cover, Plates
12	W10288008	Support, Element

# OPTIONAL PARTS

## PAINT, TOUCH-UP (1/2OZ.)

<u>Illus.</u> <u>No.</u>	<u>Part No.</u>	<u>Description</u>
	72017	White
	261869	Cord Brown
	72032	Black

## PAINT, SPRAY

<u>Illus.</u> <u>No.</u>	<u>Part No.</u>	<u>Description</u>
	350930	White
	261900	Citrine White
	830864	Black

## FOLLOWING PARTS NOT ILLUSTRATED

<u>Illus.</u> <u>No.</u>	<u>Part No.</u>	<u>Description</u>
	482338	Sealer, Silastic

## WIRING HARNESS PARTS

<u>Illus.</u> <u>No.</u>	<u>Part No.</u>	<u>Description</u>
	W10426471	Harness, Communication
	W10317407	Harness, Keypad-User Interface
	4450800	Screw, Grounding
	W10209041	Conduit
	W10392129	Lead, Ground Strap

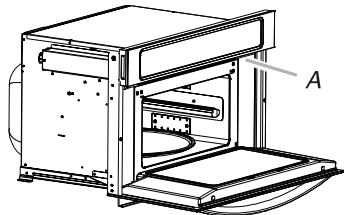
**KitchenAid®**

## PRODUCT MODEL SERIES

KBHS109B KBHS179B

## ELECTRICAL CONNECTION

- Microwave oven must be connected to the proper electrical voltage and frequency as specified on the model/serial number rating plate. The model/serial number rating plate is located underneath the control panel, along the oven vent.

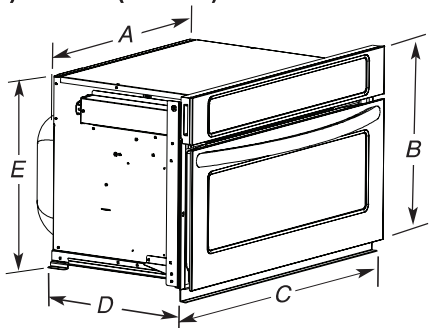


#### A. Model/serial number plate

- The microwave oven rated 120/240 volt, 20-amp, has 4 wires (L1, L2, N and G) in the flex conduit and should be connected to a 20-amp maximum rated circuit, overcurrent protected on both the L1 and L2 circuits.
- A time-delay fuse or circuit breaker is recommended.

## PRODUCT DIMENSIONS

### 27" (68.6 cm) and 30" (76.2 cm) Microwave Ovens



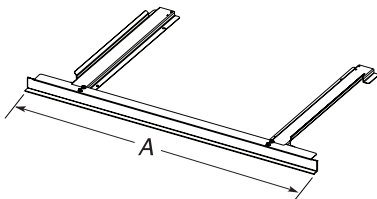
### 27" (68.6 cm) models

- A. 25  $\frac{5}{8}$ " (65.1 cm) recessed width  
B. 18  $\frac{5}{8}$ " (47.3 cm) overall height  
C. 26  $\frac{3}{4}$ " (68.0 cm) overall width  
D. 22  $\frac{3}{4}$ " (57.8 cm) overall depth  
E. 17  $\frac{1}{4}$ " (43.8 cm) recessed height

### 30" (76.2 cm) models

- A.  $25\frac{5}{8}"$  (72.7 cm) recessed width  
B.  $18\frac{5}{8}"$  (47.3 cm) overall height  
C.  $29\frac{3}{4}"$  (75.6 cm) overall width  
D.  $22\frac{3}{4}"$  (57.8 cm) overall depth  
E.  $17\frac{1}{4}"$  (43.8 cm) recessed height

### 27" (68.6 cm) and 30" (76.2 cm) Microwave Oven Spacer Kit



### 27" (68.6 cm) models

- A. 26  $\frac{3}{4}$ " (67.9 cm)  
overall width

### 30" (76.2 cm) models

- A. 29 <sup>3</sup>/<sub>4</sub>" (75.6 cm)  
overall width

**NOTE:** The microwave oven spacer kit will allow the microwave oven to be installed in a 17 $\frac{3}{8}$ "-17 $\frac{3}{4}$ " (44.1-45.1 cm) maximum cutout height.

A microwave oven spacer kit is available from your dealer that will allow the microwave oven to be installed in a 19"-19<sup>13</sup>/<sub>16</sub>" (48.3-50.2 cm) maximum cutout height. Match the oven size to the following kits:

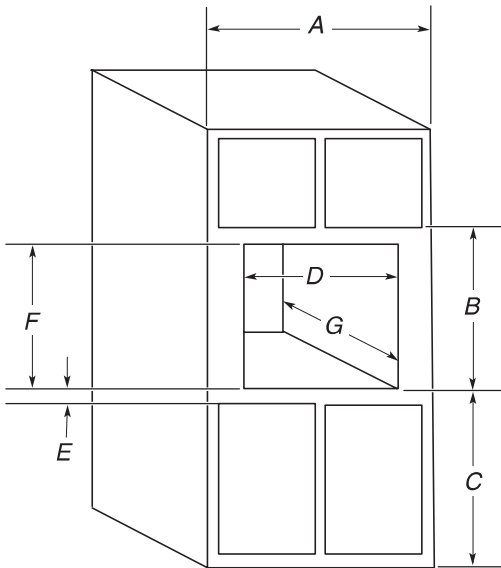
27" (68.6 cm) Stainless Steel - Model W10469901

30" (76.2 cm) Stainless Steel - Model W10469903

To order, see the “Assistance or Service” section of the Use and Care Guide.

## CABINET DIMENSIONS

### 27" (68.6 cm) and 30" (76.2 cm) Microwave Ovens



### 27" (68.6 cm) models

- A. 27" (68.6 cm) min. cabinet width
- B. 18 3/8" (47.3cm) from bottom of cutout to bottom of upper cabinet door
- C. 40" (101.6 cm) bottom of cutout to floor (recommended)
- D. 25 1/2" (64.8 cm) cutout width
- E. 1 1/2" (3.8 cm) min. bottom of cutout to top of cabinet door
- F. 17 3/8" (44.7 cm) recommended cutout height (will fit cutout height from 17 3/8" [44.1 cm] to 17 3/4" [45.1 cm])
- G. 21 3/8" (55.5 cm) min. cutout depth

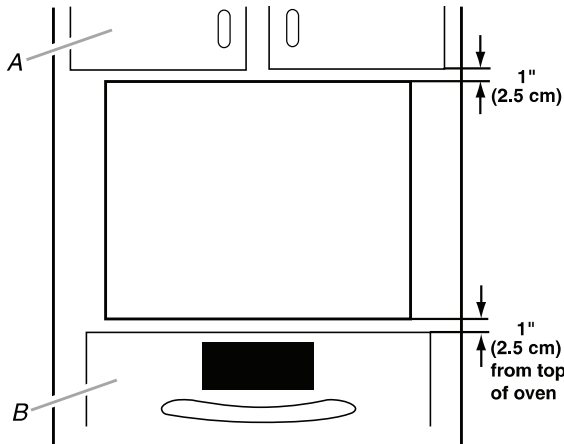
### 30" (76.2 cm) models

- A. 30" (76.2 cm) min. cabinet width
- B. 18 3/8" (47.3cm) from bottom of cutout to bottom of upper cabinet door
- C. 40" (101.6 cm) bottom of cutout to floor (recommended)
- D. 28 1/2" (72.4 cm) cutout width
- E. 1 1/2" (3.8 cm) min. bottom of cutout to top of cabinet door
- F. 17 5/8" (44.7 cm) recommended cutout height (will fit cutout height from 17 3/4" [44.1 cm] to 17 3/4" [45.1 cm])
- G. 21 7/8" (55.5 cm) min. cutout depth

## MINIMUM INSTALLATION CLEARANCES

For proper installation, the following minimum clearances must exist above and below the cabinet opening.

## Installation Above Single Built-In Oven



A. Upper cabinet  
B. Lower single oven

Approved models: KEBK171B, KEBK101B, KEBS179B, KEBS109B and KEBU109B.