

Year: 2016-2017
Make: Newmar
Model: Ventana
Type: Diesel Pusher
Last Update: 06-22-16

DIAMOND SHIELD
1278 LYELL AVE ROCHESTER, NY 14606
TOLL FREE: 888.806.5862
EMAIL: INFO@DIAMOND-SHIELD.COM
WEBSITE: DIAMOND-SHIELD.COM


Cut Date: _____
Cut By: _____
Kind of Film: _____

Please write legibly. Complete entire face sheet and double check any numbers copied down.

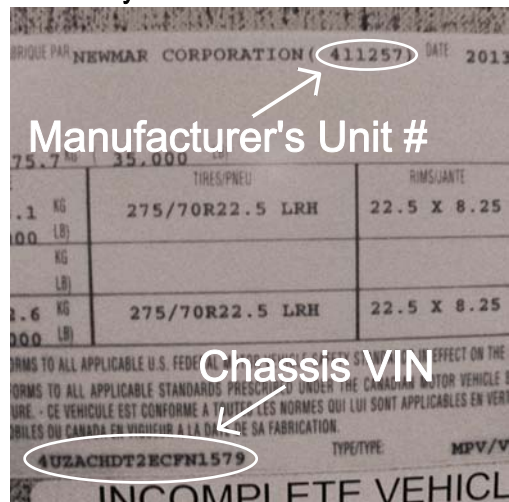
Installation Date: _____
Installer(s): _____
Location Of Installation: _____
Chassis VIN (Last 8): _____
Manufacturer's Unit #: _____

Lot #(s): _____

P.O. # (if needed): _____

ARE ALL PAINT IMPERFECTIONS AND POTENTIAL PROBLEMS
SHOWN BELOW ON PATTERN (Including Based Areas): Yes / No
Who Approved The Paint for Installation: _____
Was Diamond Placed in Recommend Location On Unit: Yes \ No
Were All Edges Heat Gunned and Re-Squeegeed: Yes \ No
Warranty and Product Care Should Be Placed In Cabinet Over The Sink
Was Warrantry Card Filled Out and Left In Unit: Yes \ No
Was Product Care Left In Unit: Yes \ No
Diamond placement indicated below by 

Chassis VIN And Unit # Located
On Wall By Driver's Seat Close To The Floor



- Parts:
- | | |
|-------------------------|--------------------------|
| 1. Header | 8. Mid Center Bumper |
| 2. Hood | 9. Lower Center Bumper |
| 3. Grille | 10. PS Fog Light Inserts |
| 4. PS Bumper Corner | 11. DS Fog Light Inserts |
| 5. DS Bumper Corner | 12. Door Latch |
| 6. Bumper Inserts (A,B) | 13. Grab Handle |
| 7. Upper Center Bumper | 14. Kick Plate |

