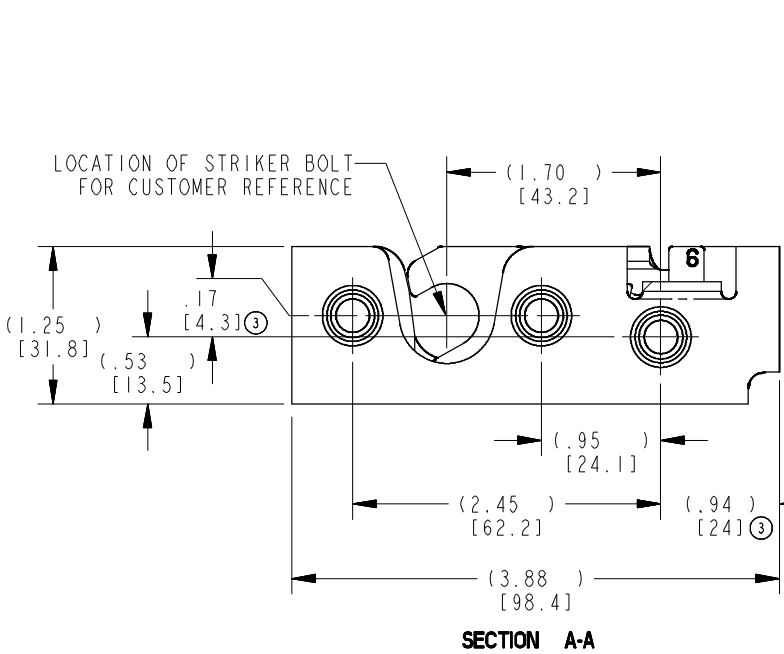
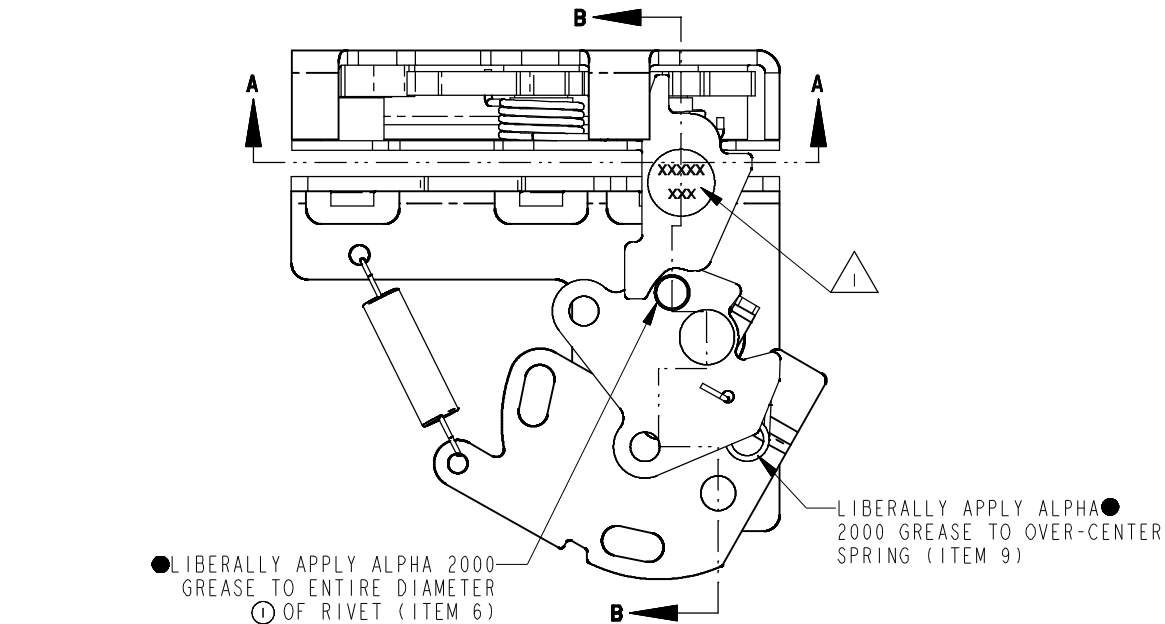
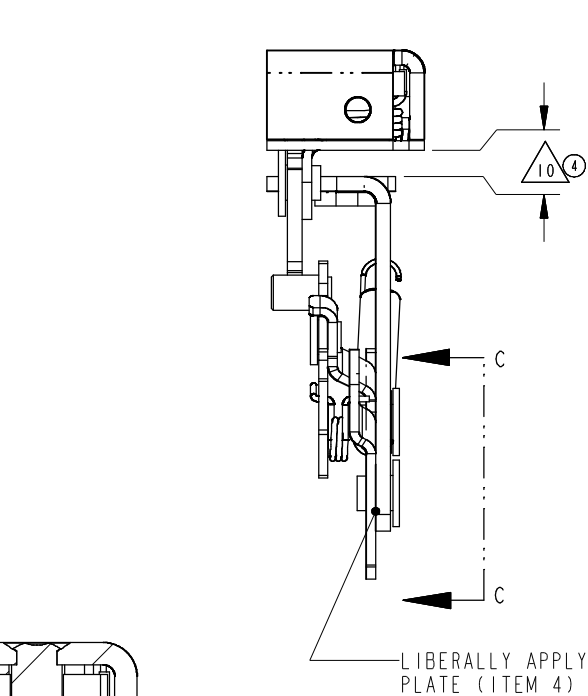


PART NUMBER	ITEM 1 BASE LATCH (QTY)	ITEM 2 LEVER (QTY)	ITEM 3 RIVET (QTY)	ITEM 4 PLATE (QTY)	ITEM 5 LOCK ARM (QTY)	ITEM 6 RIVET (QTY)	ITEM 7 LEVER (QTY)	ITEM 8 RIVET (QTY)	ITEM 9 SPRING (QTY)	ITEM 10 SPRING (QTY)	ITEM 11 WASHER (QTY)	③ PART MARKING
18497-01	④ 0500200-63 (1)	⑤ 18270-01 (1)	80635-16 (3)	18269-01 (1)	16510-01 (1)	81013-42 (1)	18302-01 (1)	81133-16 (1)	80710-57 (1)	12902-01 (1)	80950-15 (1) ②③	18497

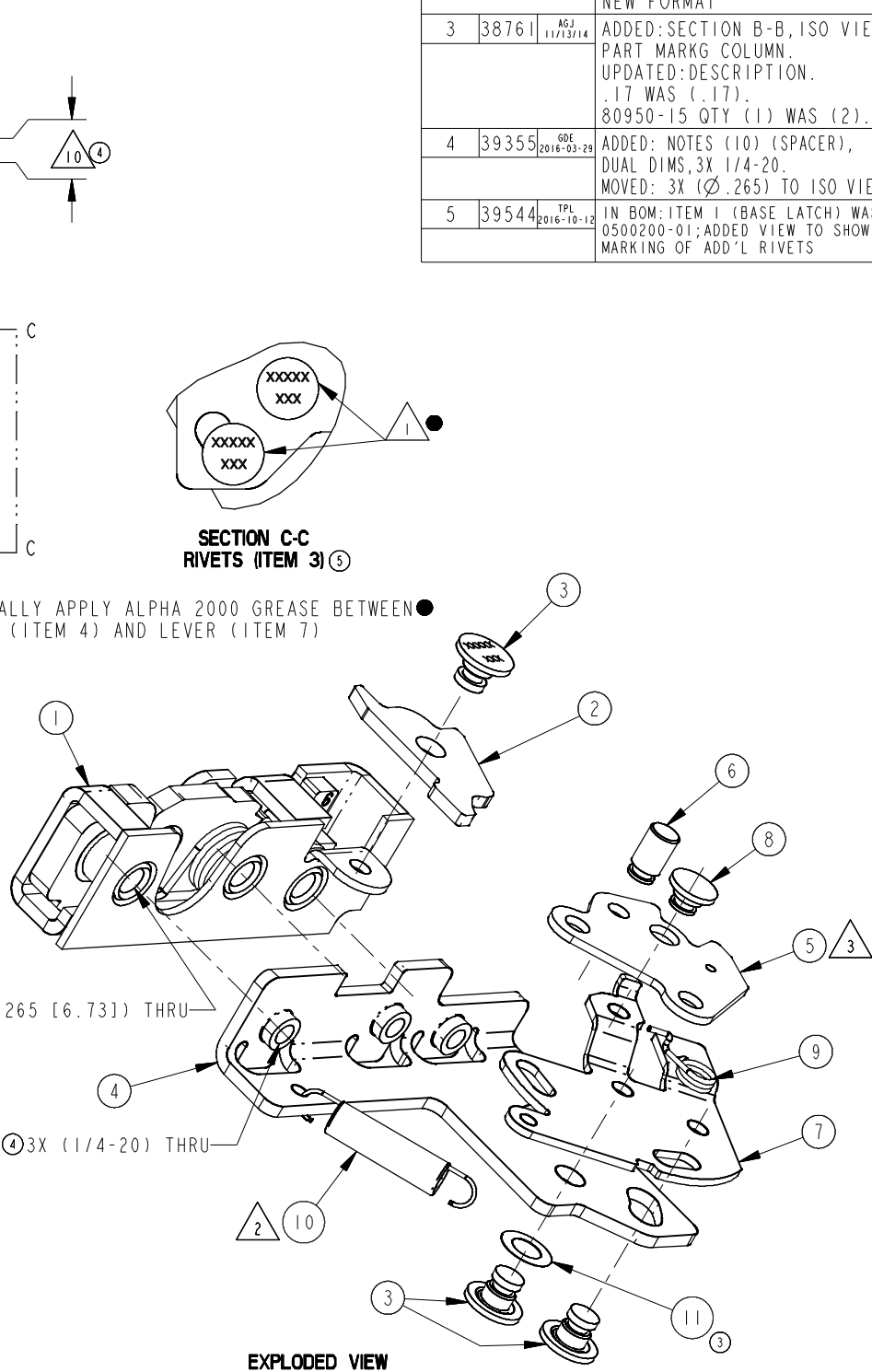
REVISION	ECN	ECN BY	DESCRIPTION
1	20499	MAD 1/16/05	(ITEM 6)WAS(ITEM 8)(X2), (ITEM 8)WAS(ITEM 7)
2	20769	MAD 3/9/06	ADDED 80950-15; .260-.290 WAS .305-.335;UPDATE TO NEW FORMAT
3	38761	AGJ 11/13/14	ADDED:SECTION B-B,ISO VIEW, PART MARKG COLUMN. UPDATED:DESCRIPTION. .17 WAS (.17). 80950-15 QTY (1) WAS (2).
4	39355	GOE 2016-03-29	ADDED: NOTES (10) (SPACER), DUAL DIMS,3X 1/4-20. MOVED: 3X (Ø.265) TO ISO VIEW.
5	39544	TPL 2016-10-12	IN BOM: ITEM 1 (BASE LATCH) WAS 0500200-01;ADDED VIEW TO SHOW MARKING OF ADD'L RIVETS



- NOTES: UNLESS OTHERWISE SPECIFIED;
- ① IDENTIFY ASSEMBLY WITH PART NUMBER AND DATE CODE APPROXIMATELY AS SHOWN, OR IN OTHER APPROVED LOCATIONS AS OUTLINED IN ES-121. ORIENTATION OF THE RIVET CONTAINING PART MARKING NOT IMPORTANT.
 - ② ORIENTATION OF SPRING (ITEM 10) NOT CRITICAL.
 - ③ AFTER STAKING, LOCK ARM (ITEM 5) SHOULD ROTATE FREELY WITH NO NOTICEABLE RESISTANCE.
 - ④ DIMENSIONS IN [] ARE MILLIMETERS, FOR REFERENCE ONLY.
 - ⑤ WHEN MOUNTING LATCH, MOUNTING HOLE SIZE NOT TO EXCEED Ø.312 [7.92].
 - ⑥ USE WITH TRIMARK'S Ø.500 STRIKER BOLT.
 - ⑦ TIGHTEN GRADE 5 OR BETTER MOUNTING FASTENERS TO THE FASTENER MANUFACTURER'S RECOMMENDED TORQUE VALUE; HOWEVER, DO NOT EXCEED 120 IN-LB [13.6 Nm].
 - ⑧ ASSEMBLY COMPLIES WITH STRENGTH REQUIREMENTS OF SAE STANDARD J839.
 - ⑨ OPPOSITE HAND ITEM IS 18861-01.
 - ⑩ FOR PROPER FUNCTION OF ASSEMBLY, A SPACER 0.197-0.221 IN [5.00-5.61 MM] THICK IS REQUIRED BETWEEN THE LATCH AND LOGIC MECHANISM.



SECTION B-B
SCALE 1.50



● INDICATES REQUIRED ASSEMBLY INFORMATION. UOS: THE -00 VERSION SHALL BE THE UNFINISHED VERSION OF PART SHOWN. UOS: ALL DIMENSIONS APPLY BEFORE COATING. (ASME Y14.5M, sec. 2.4.1)		TriMark 500 Bailey Avenue P. O. Box 350 New Hampton, Iowa 50659 U.S.A. Tel: 641-394-3188 Fax: 641-394-2392	
TOLERANCES UNLESS OTHERWISE SPECIFIED (UOS) ASME Y14.5M-1994 INCH MILLIMETER X.X ±.1 X ±.3 X.XX ±.03 X.X ±.8 X.XXX ±.010 X.XX ±.25 ANGLES X° ±3° X.X° ±1.0° X.XX° ±.50°		DRAWN BY TJZ 2001-06-20 CHECKED BY KPE 2005-01-06 PROJECT 03016 PRODUCT CODE E23 (050-0250) CUSTOMER - CUSTOMER PART NUMBER - PART WEIGHT (0.97 LB) SURFACE AREA - SIZE C SCALE 1.0 PART NUMBER 18497	
REF: T/M OP 4-20-2 FOR SUP. QUALITY REQ. REF: T/M OP 4-20-3 FOR INT. QUALITY REQ.		This drawing and the information contained herein is the property of TriMark Corporation and shall not be used for any purpose without our written consent.	