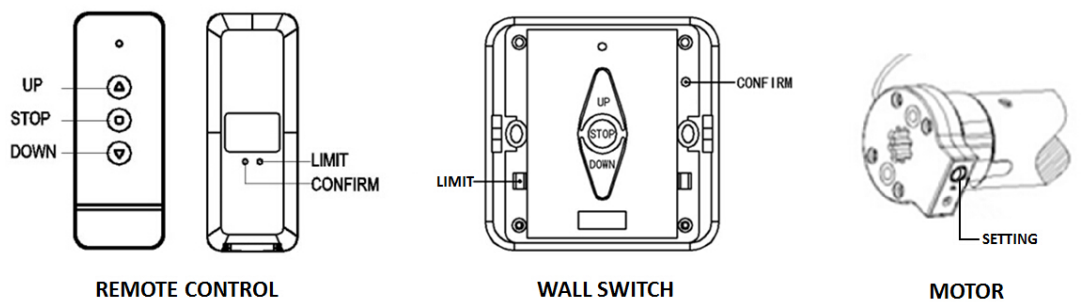


RETRACTABLE SCREEN REMOTE CONTROL OPERATING INSTRUCTIONS

Notice

- Install motor terminal on the same side as power supply.
- Antenna should be as straight as possible. Position the antenna as far away from metal objects so that receiving distance is not affected.
- Please replace batteries of remote control or wall switch before the battery use up.



New Purchased Motorized Screen

For new purchased motorized screen, operate according to step I and step II to set the BOTTOM limit and TOP limit.

I. To set BOTTOM limit

- 1) Press "Limit" key on the remote control for 3 seconds until the motor produces three beeps of "Di-Di-Di". Release the "Limit" key, the motor is now in the limit setting status.
- 2) Press the "Down" key on the remote-control, the screen should go down. When the screen is close to the desired position of the down limit, press the "Stop" key on the remote-control.
- 3) Press the "Up" or "Down" key, to fine tune the BOTTOM limit location.
- 4) Press the "Confirm" key, when the motor produces three beeps of "Di-Di-Di", the setting is completed.

II. To set TOP limit

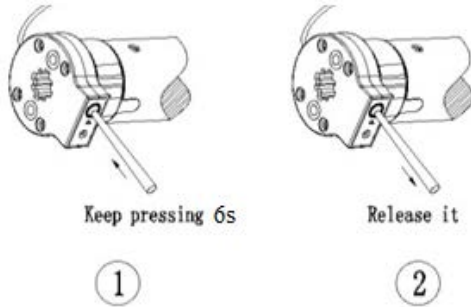
- 1) Press "Up" key on the remote control, the screen should go up. When the screen is close to the desired TOP limit, press the "Stop" key on the remote control.
- 2) Press "Up" or "Down" key to fine tune the TOP limit location.
- 3) Press the "Confirm" key, when the motor produces three beeps of "Di-Di-Di", the setting is completed.

New Remote Control

IF YOU lost the original remote control and need to replace with a new remote control, please operate according to the following steps.

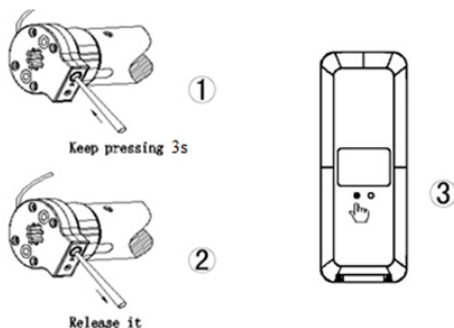
III. Eliminate the original connection between remote control and motor

Press and hold the “Setting” key on the motor for 6 seconds, until the motor produces beeps of “Di-Di” and “Di-Di-Di-Di” release the “setting” key, the memory on the motor has been eliminated.



IV. Match the remote control with motor.

Press and hold the “Setting” key on the motor for 3 seconds, until the motor gives out sounds “Di-Di”, release the “Setting” key, and press the “Confirm” key on the remote control before the “Di-Di” beeps stopped, the motor will vibrates and produces beeps of “Di-Di” , the setting is completed.



V. Adjust the motor running direction.

Press the “Up” key on the remote control.

- If the screen moves up, that means the key and the motor match, no need to adjust, skip this step and go to (VI).
- If the screen moves down: Press and hold the “Limit” key and “Stop” key for 3 seconds. When the motor produces three beeps of “Di-Di-Di” release both keys. The motor running direction has been changed.

TO TEST: Press the “Up” key on the remote-control, if the screen goes up, the setting is completed.

VI. Add wall switch controls

Press and hold the “Limit” key and “Confirm” key on the remote control for 3 seconds. When the motor produces three beeps of “Di-Di-Di” release both keys, and press the “Confirm” key on the wall switch before the “Di-Di-Di” beeps stopped, the motor will vibrates and produces three beeps of “Di-Di-Di”, the setting is completed. Now screen can be operated by both wall switch and remote control.

Q & A

If screen do not operate, please check:

- Whether the power supply is connected properly and well tightened. If yes, the motor will produce the sounds “Di-Di-Di”.

If the motor continues running, please check:

- If the motor continues running in one direction, go to step I and step II to set the limit.