



Product Transition Notice

In order to ensure our products continue to evolve as technology changes, ASA Electronics will be updating our camera line as follows:

The Voyager VCMS155B and VCMS155 color CMOS observation cameras will be discontinued. ASA's replacement cameras are the Voyager VCMS20B and VCMS20 color observation cameras. This change will be effective **January 1, 2019**

VCMS155B/VCMS155



- High-performance color optics
- Waterproof (IP69K)
- Diagonal viewing angle: 140°
- IR low-light assist (10 LEDs)
- Selectable Normal/Mirror orientation
- Microphone
- Aluminum housing
- Corrosion Resistant (ASTMB117)
- Available in white (VCMS155) or black (VCMS155B)

VCMS20B/VCMS20



- High-performance color optics
- Waterproof (IP69K)
- **Diagonal viewing angle: 145°**
- IR low-light assist (**19 LEDs**)
- Selectable Normal/Mirror orientation
- Microphone
- Aluminum housing
- Corrosion Resistant (ASTMB117)
- **600 TV line resolution**

Note: Mounting holes are the same for both cameras

If you have any questions regarding these product changes or want information on specific pricing, please contact your ASA sales representative or ASA Customer Service at 574-264-3135 or 800-688-3135.

Notification Date: 12/01/18

2602 Marina Drive - Elkhart, Indiana 46514
www.ASAelectronics.com

Voyager®

Color CMOS Camera

VCMS20B



PRODUCT FEATURES:

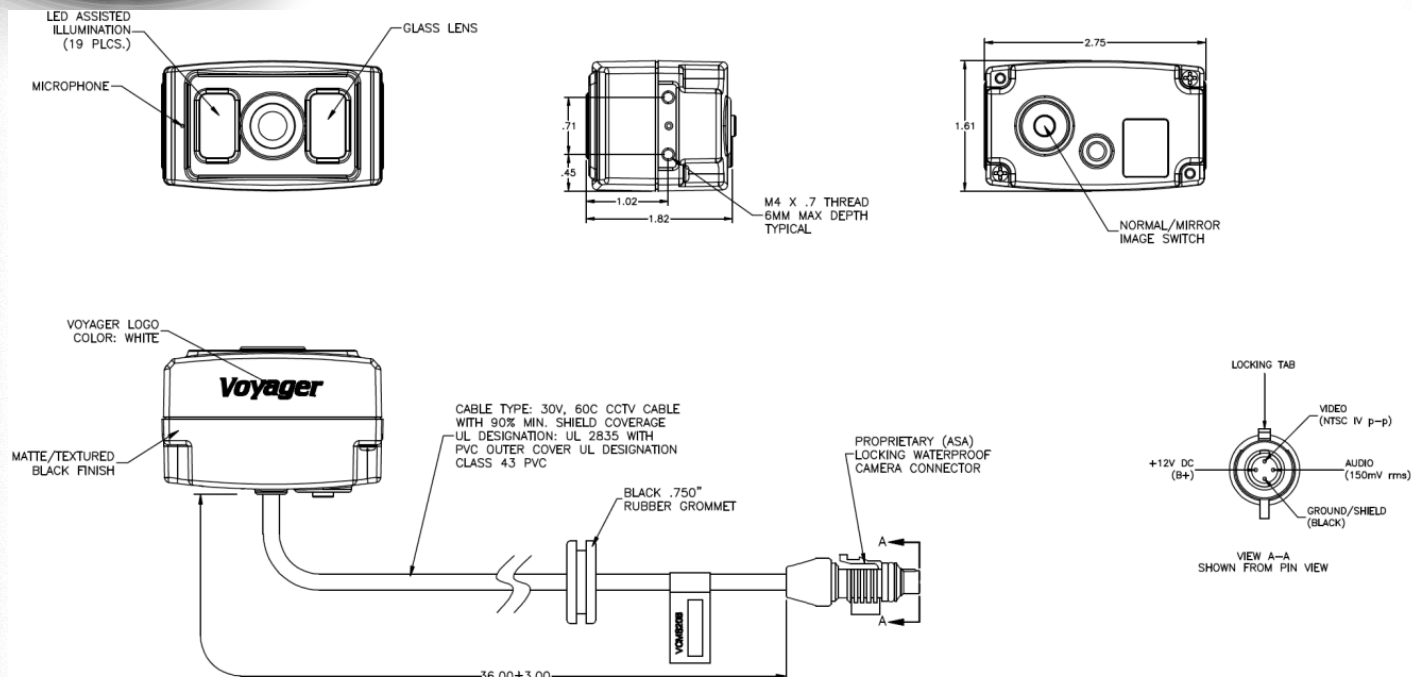
- High Performance Color Optics
- CMOS Technology
- LED Low Light Assist (19 LEDs)
- Microphone
- Normal/Mirror Image Switch
- Black Aluminum Housing
- IP69K Waterproof Rating
- Corrosion Resistant
- 12 Volt DC

EXPAND your vision™

asa
ELECTRONICS™
2602 Marina Drive • Elkhart, IN 46514
www.asaelectronics.com

Voyager®

Color CMOS Camera VCMS20B



Specifications: ES-0001 Electrical / ES-0013 Environmental

General Specifications:

Power System	12VDC	
Operating Voltage Range	9V – 15VDC	
Power Consumption	161 mA	
Operating Temperature Range	-40°F to 185°F	-40°C to 85°C
Storage Temperature Range	-40°F to 185°F	-40°C to 85°C
Operating Relative Humidity	100% RH	
Waterproof Rating	IP69K	
Overall Dimensions (without bracket)	1.61" x 1.82" x 2.75"	40.9 x 46.2 x 68.8 mm
Product Weight (unpackaged)	8.82 Oz	250 g

Optical Specifications

Video Output Signal Format		NTSC
Video Signal Output Level		1.0V p-p ; 75Ω
CCD Specifications	Sensor	1/3" CMOS
	Iris/Shutter Type	Electronic Automatic
	Shutter speed	1/60 s ~ 12 μs
	Resolution	600 TV Lines
	Sensitivity	0 Lux
	Image Orientation	Mirror / Normal
	View Angles	
	D	145°
	H	109°
	V	93°

Features and specifications subject to change without notice.