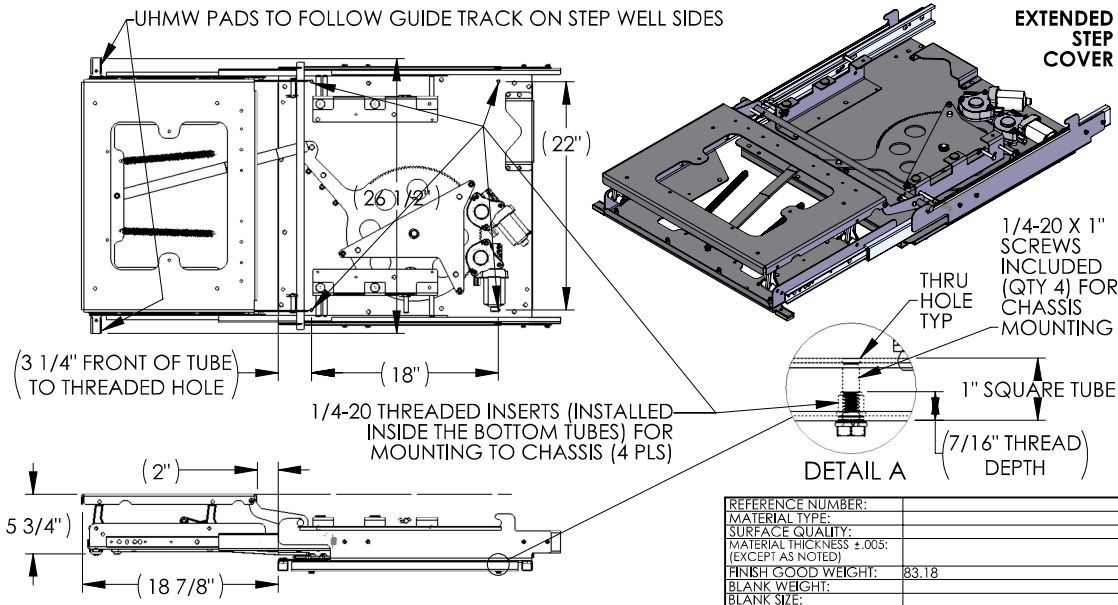
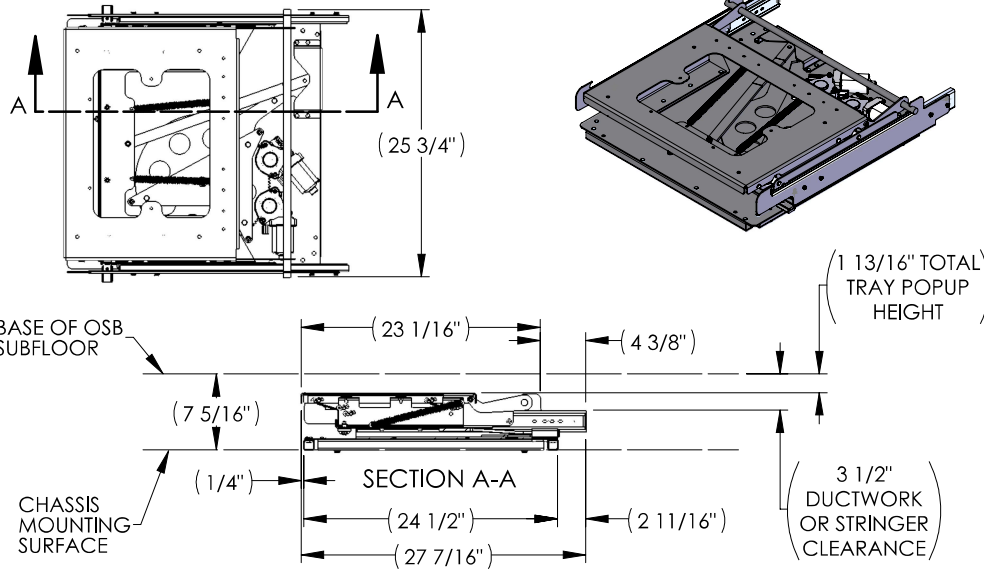


NOTES:

- SEE ADDITIONAL SHEETS FOR ASSEMBLY STEPS
- DIMENSIONS ON SHEET 1 ARE FOR CUSTOMER REFERENCE

RETRACTED
STEP COVER
(AS SHIPPED)



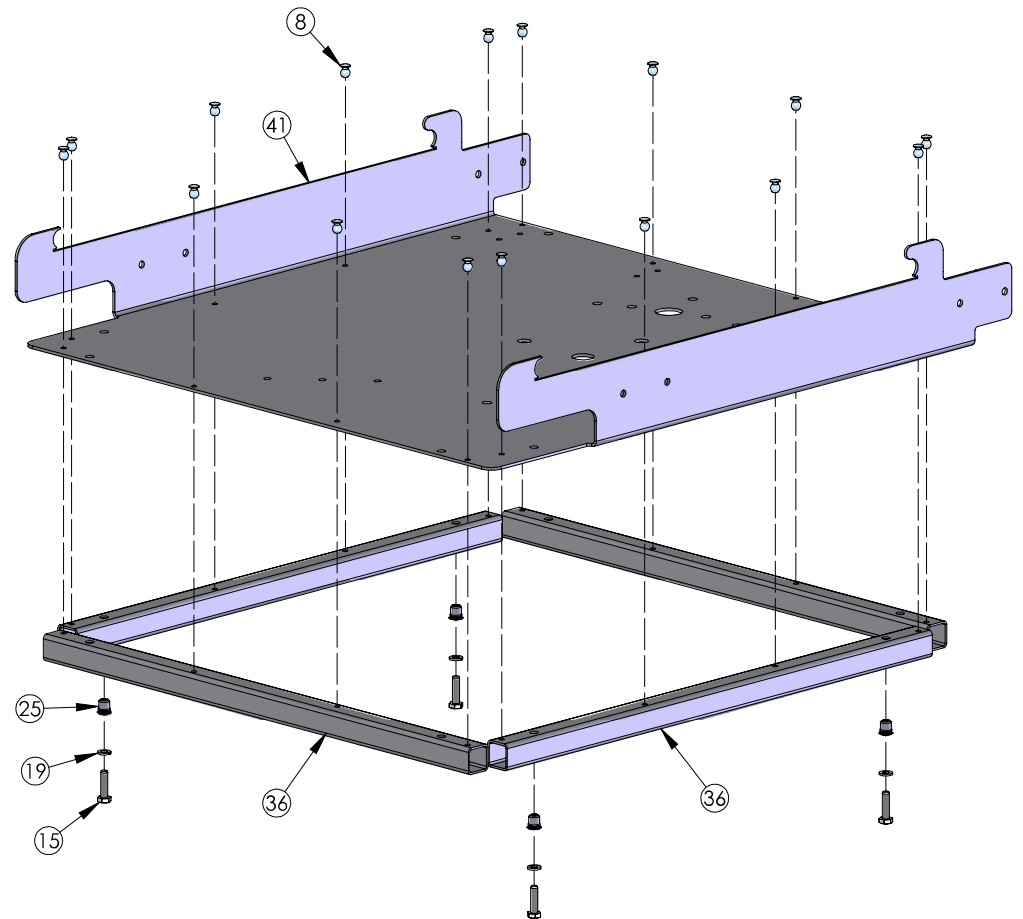
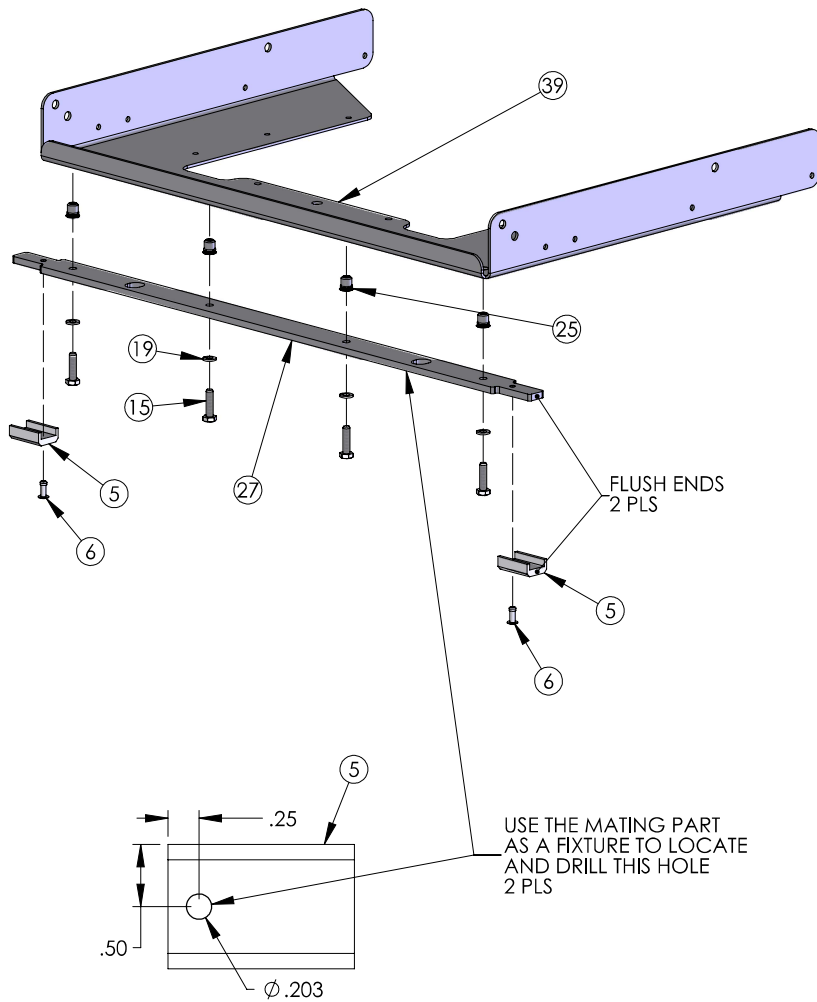
REFERENCE NUMBER:	
MATERIAL TYPE:	
SURFACE QUALITY:	
MATERIAL THICKNESS ±.005:	(EXCEPT AS NOTED)
FINISH GOOD WEIGHT:	83.18
BLANK WEIGHT:	
BLANK SIZE:	

REV	DATE	DESCRIPTION	CA	DWR	APVD
A	11/30/2017	RELEASED TO PRODUCTION	CA-0103457	NF	NF
B	3/30/2023	REPLACE 375174 W/118042, UPDATE SHEET TEMPLATE	CA-00173285	RWP	BJR
C	12/21/2023	REPLACE 378284 W/376267	CA-00212322	RWP	BJR



ITEM	PART NO.	CONFIG	DESCRIPTION	NAME	GA	QTY
1	366403	Default	SLIDE 22 IN 475017 (1910700)	SLIDE		2
2	704054	Default	STEP SA WELL COVER LINKAGE DRIVE	STEP		1
3	704055	Default	STEP WELL COVER PIVOT ARM WLDMT 25.75 X 6.25	STEP		1
4	704057	Default	STEP WLDMT TOP TRAY COVER 22.38 X 16.88	STEP		1
5	370929	Default	WEAR PAD .125"x1"x1.5" STEP WELL FOOT COVER (3010002892)	WEAR		2
6	201486	Default	FASTEN RIVET BOE BTNHD 3/16 .376 - .500 AL PLAIN LCSTL ST			2
7	370832	Default	ELEC - WIRE HARN STEP COVER DUAL MTR (NOT SHOWN) (1809867)	ELEC		1
8	369296	Default	FASTEN RIVET SB6-4 3/16 X .250	FASTEN		36
9	373579	Default	FASTEN SHLDR BOLT 3/8 X 3/8 5/16 18 BLKXOD SCH ST	FASTEN		1
10	118042	Default	NUT - 1/4-20 NYLOCK ZN GR2 ST	FASTEN		2
11	362350	Default	FASTEN RIVET BOE BTNHD 1/4 .063-.250 ST ZN ST PLAIN	FASTENER		8
12	369091	Default	BOLT - 10 - 32 X 2 HWH ZN PTHD ST	FASTENER		6
13	369112	Default	NUT - #10 - 32 NYLOCK PLAIN (1205420)	FASTENER		6
14	375308	Default	0.625" SHAFT BOWED SHAFT RETAINING RING (1217010)	FASTENER		2
15	375336	Default	BOLT - 1/4 - 20 X 1 HHCS GR5 ZN FTNP ST (1203070)	FASTENER		11
16	375344	Default	NUT - 5/16 - 18 NYLOCK ZN GR 2 ST (1205930)	FASTENER		1
17	375922	Default	BOLT: 1/4-20 X .500, HEX HEAD (1203010)	FASTENER		3
18	376092	Default	NUT - 1/4 - 20 HEX ZN GR ST (1205600)	FASTENER		6
19	376162	Default	1/4 SPLIT LOCK WASHER (1209420)	FASTENER		14
20	376267	Default	FASTEN 1/4 SAE FLAT WASHER (1209410)	FASTEN		4
21	378290	Default	FASTEN - CLVSPN - 2.25 X .31 ZN	FASTENER		6
22	405588	Default	FASTEN - CLVSPN - 1.75 X .31	FASTENER		4
23	405589	Default	COTTER PIN - 1/16 X 1 1/8 ZN ST	FASTENER		10
24	672863	Default	SHOULDER BOLT - 5/16 X 0.25 - 1/4-20, BLKXOD SCH ST	FASTENER		2
25	701090	Default	RIVET NUT, BRB - 1/4-20 X .027-.165 ZN ST	FASTENER		8
26	713150	1	HAT 2.73 X 6.25 X .94 X .75 BLACK	HAT	12	1
27	703478	1	PLATE 26.50 X 1.25 BLACK	PLATE	1/4	1
28	711019	1	PLATE 14.74 X 9.21 BLACK	PLATE	14	1
29	369506	Default	MOTOR 18NM DAEDONG RH PINION 9TOOTH	PURCH		2
30	369515	Default	GUIDE BUTTON 24 ELECTRIC STEP (1612730)	PURCH		9
31	370850	Default	1.55 X .63 (7204531)	RD. STOCK	-	1
32	369198	Default	STANDOFF MOTOR 24 25 1220056	RDTUBE		9
33	366059	Default	BEARING 5/8" ID (1102015)	SMALL PART		2
34	370828	Default	PLASTIC LIFTER CAM (1612547)	SMALL PART		4
35	370824	Default	SPRING .63 OD X .07 WIRE C 10 LG	SPRING		2
36	705246	1	TUBE 21.750 X 1.000 X 1.000 X .075 ERW BLACK	TUBE	14	4
37	370825	Default	RUBBER BUMPER PAD: 1/4" X 3/16" X 7/8" (1602025)	WEAR		4
38	370829	Default	WEAR PAD, PLASTIC DROP ROD BRKT (1612568) CUT TO 19-3/8	WEAR		2
39	703135	1	XMC 17.11 X 22.98 X 2.41 X 2.41 BLACK	XMC	12	1
40	703386	1	XMC 12.00 X 2.87 X 1.25 X 2.50 PC BLACK	XMC	12	2
41	704453	1	XMC 26.25 X 24.75 X 4.40 X 4.40 BLACK	XMC	12	1

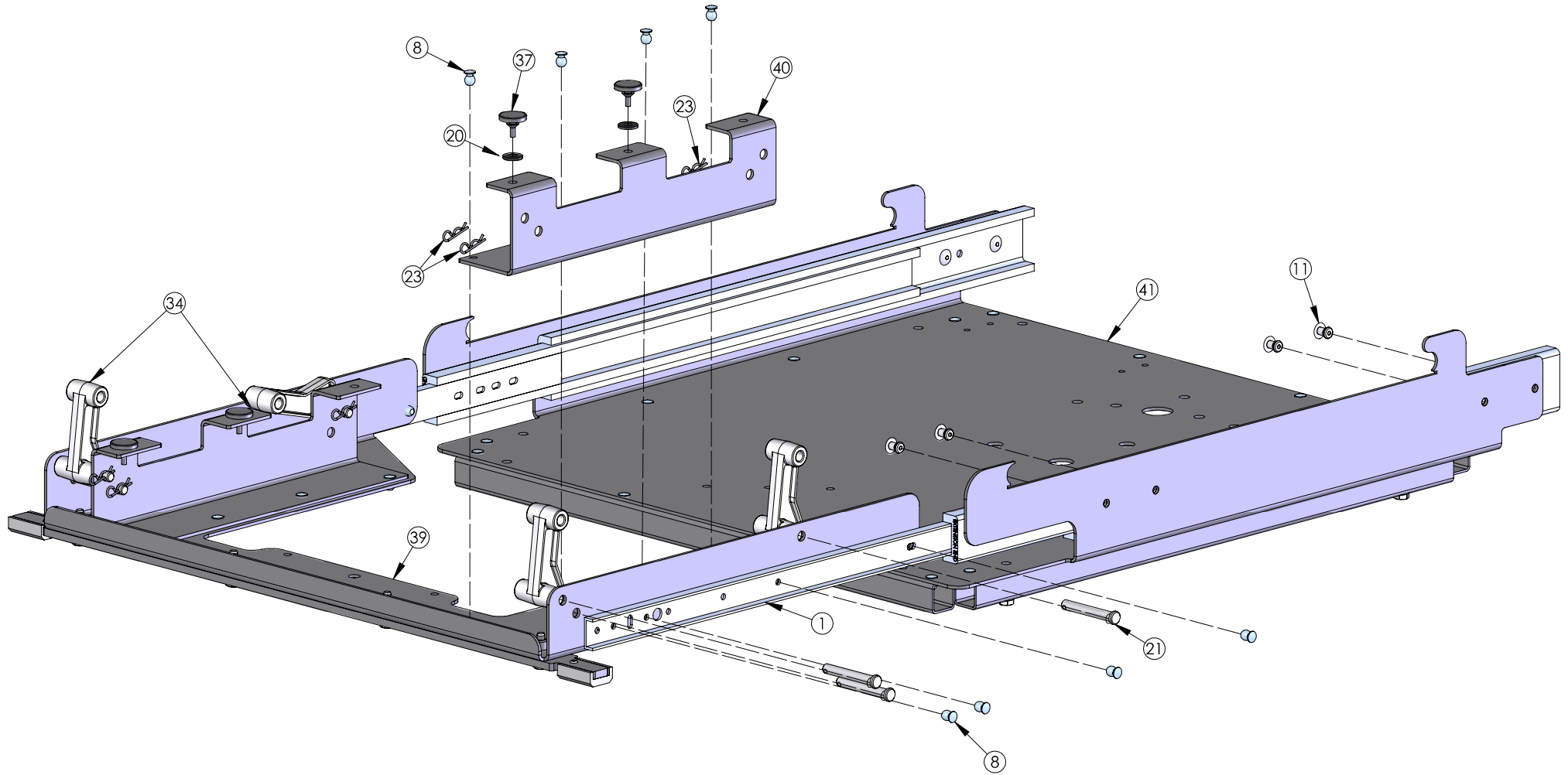
STEP WELL COVER STL ELEC 27.44 X 26.50



UNLESS OTHERWISE SPECIFIED 1. ALL DIMENSIONS ARE IN INCHES 2. BREAK SHARP EDGES & DEBURR 3. MATERIAL & FINISH TO BE AS NOTED OR SUBSTITUTED WITH AN APPROVED AND TESTED EQUIVALENT		TOLERANCES (EXCEPT AS NOTED)	THE INFORMATION CONTAINED IN THIS DRAWING IS THE SOLE PROPERTY OF LIPPERT. ANY REPRODUCTION IN PART OR AS A WHOLE WITHOUT THE WRITTEN PERMISSION OF LIPPERT IS PROHIBITED.		DWG. NO. 705247		SIZE B	DATE: 11/30/2017	REV. C
FILLETS R.015	FINISH ✓	DECIMAL .X ±.1 .XX ±.03 .XXX ±.015	FRACTIONAL ±1/16	ANGULAR ±1°	ENGINEER NF	DRAFTSMAN NF	APPROVED BY	SHEET 1	OF 6

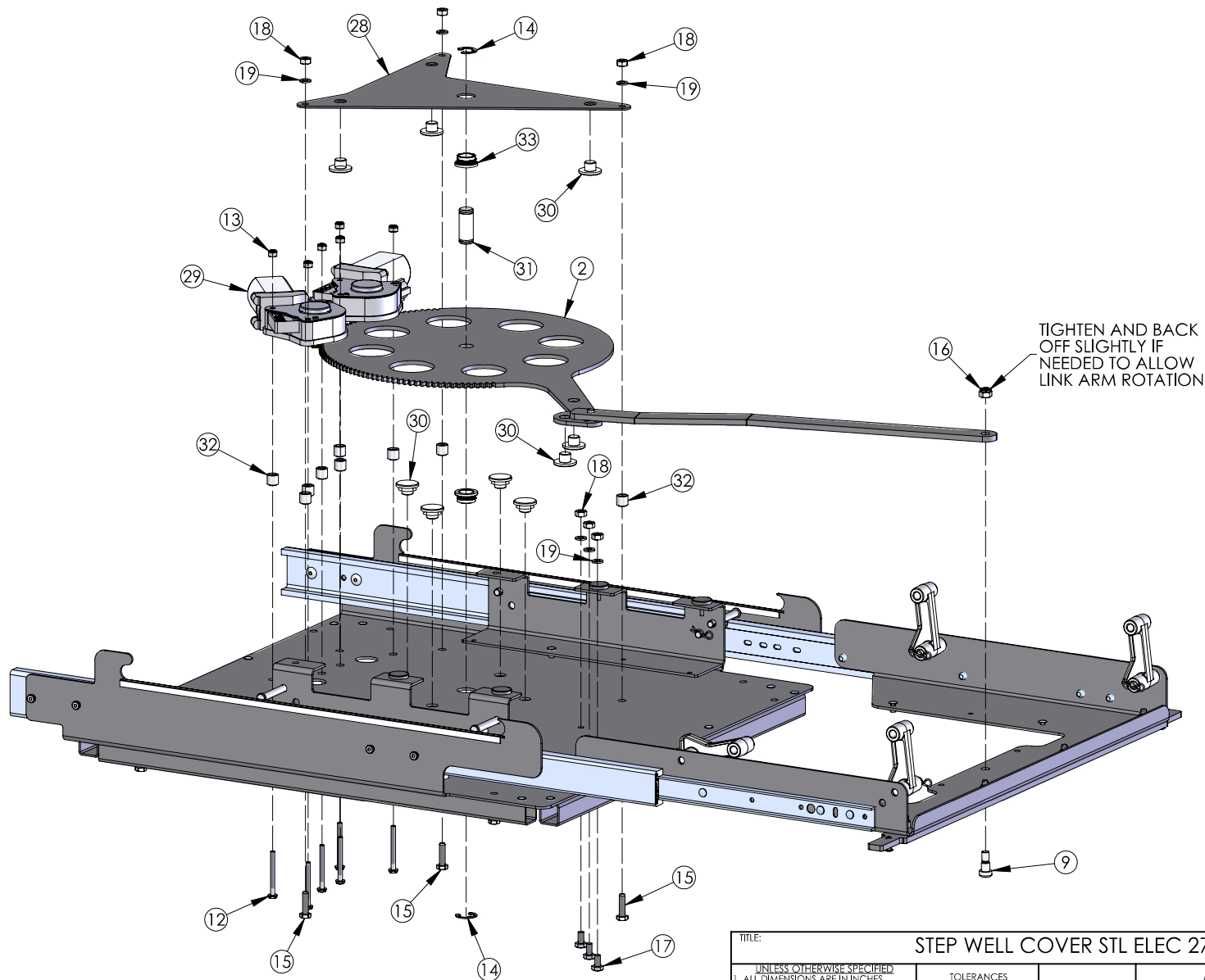


REFERENCE NUMBER:	
MATERIAL TYPE:	
SURFACE QUALITY:	
MATERIAL THICKNESS ±.005:	
(EXCEPT AS NOTED)	
FINISH GOOD WEIGHT:	83.18
BLANK WEIGHT:	
BLANK SIZE:	



TITLE:		STEP WELL COVER STL ELEC 27.44 X 26.50													
UNLESS OTHERWISE SPECIFIED		TOLERANCES (EXCEPT AS NOTED)		THE INFORMATION CONTAINED IN THIS DRAWING IS THE SOLE PROPERTY OF LIPPERT. ANY REPRODUCTION IN PART OR AS A WHOLE WITHOUT THE WRITTEN PERMISSION OF LIPPERT IS PROHIBITED.				DWG. NO. 705247		SIZE B		DATE: 11/30/2017		REV. C	
1. ALL DIMENSIONS ARE IN INCHES															
2. BREAK SHARP EDGES & DEBURR															
3. MATERIAL & FINISH TO BE AS NOTED OR SUBSTITUTED WITH AN APPROVED AND TESTED EQUIVALENT															
FILLETS R.015		FINISH <input checked="" type="checkbox"/>		DECIMAL .X ±.1 .XX ±.03 .XXX ±.015		FRACTIONAL ±1/16		ANGULAR ±1°		APPROVED BY		SHEET 2		OF 6	
THIRD ANGLE PROJECTION								ENGINEER NF		DRAFTSMAN NF					

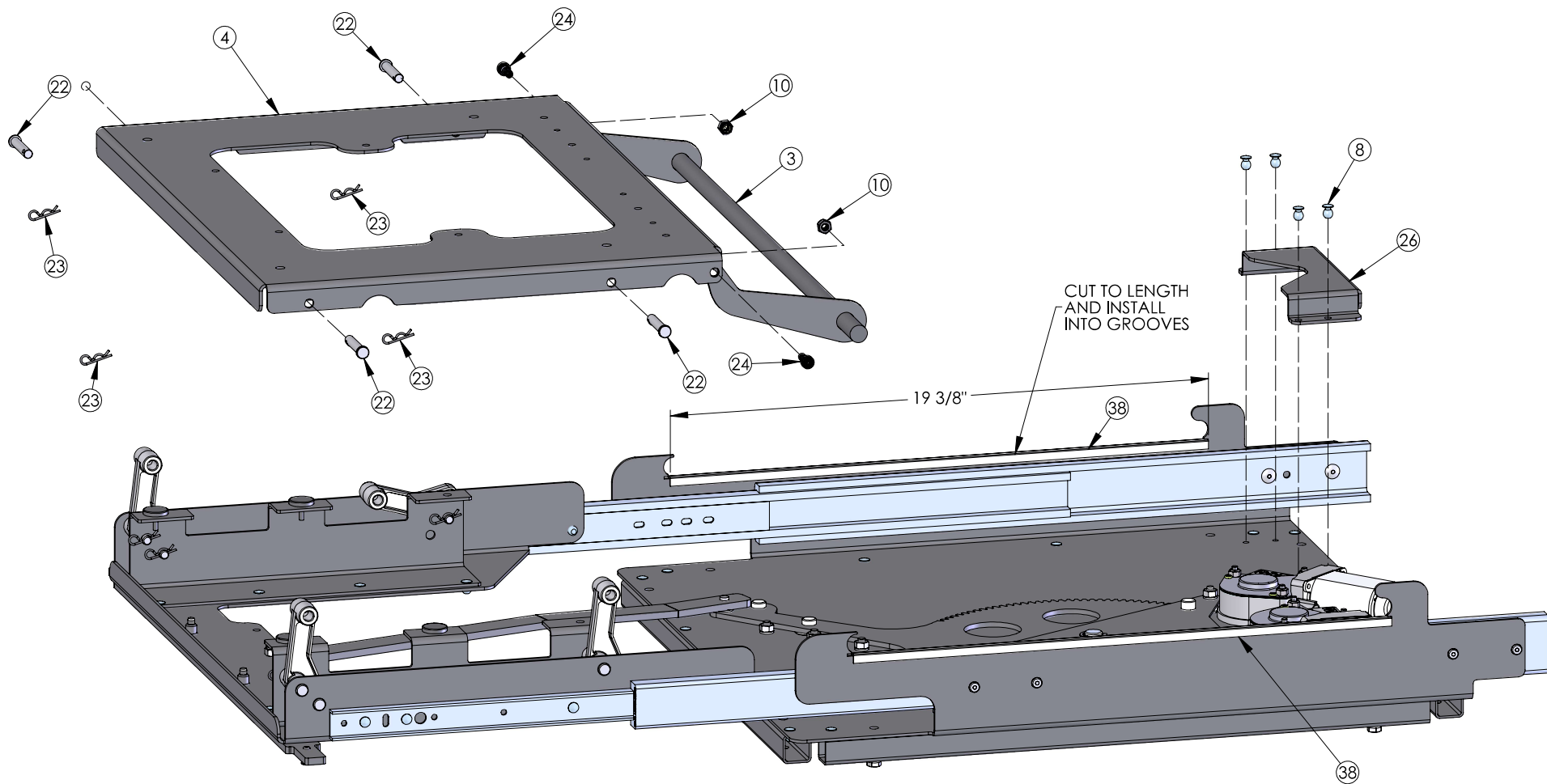





TITLE:		STEP WELL COVER STL ELEC 27.44 X 26.50			
UNLESS OTHERWISE SPECIFIED		TOLERANCES (EXCEPT AS NOTED)		<div></div> <div>THE INFORMATION CONTAINED IN THIS DRAWING IS THE SOLE PROPERTY OF LIPPERT. ANY REPRODUCTION IN PART OR AS A WHOLE WITHOUT THE WRITTEN PERMISSION OF LIPPERT IS PROHIBITED.</div>	
1. ALL DIMENSIONS ARE IN INCHES		DECIMAL .X ±.1			
2. BREAK SHARP EDGES & DEBURR		.XX ±.03			
3. MATERIAL & FINISH TO BE AS NOTED OR SUBSTITUTED WITH AN APPROVED AND TESTED EQUIVALENT		.XXX ±.015			
FILLETS R.015		FINISH ✓		DWG. NO. <div>705247</div>	
THIRD ANGLE PROJECTION		FRACTIONAL ±1/16		SIZE <div>B</div>	
		ANGULAR ±1°		DATE: 11/30/217	
				SCALE: 1:16	
				REV. <div>C</div>	
				APPROVED BY	
				SHEET 3 OF 6	

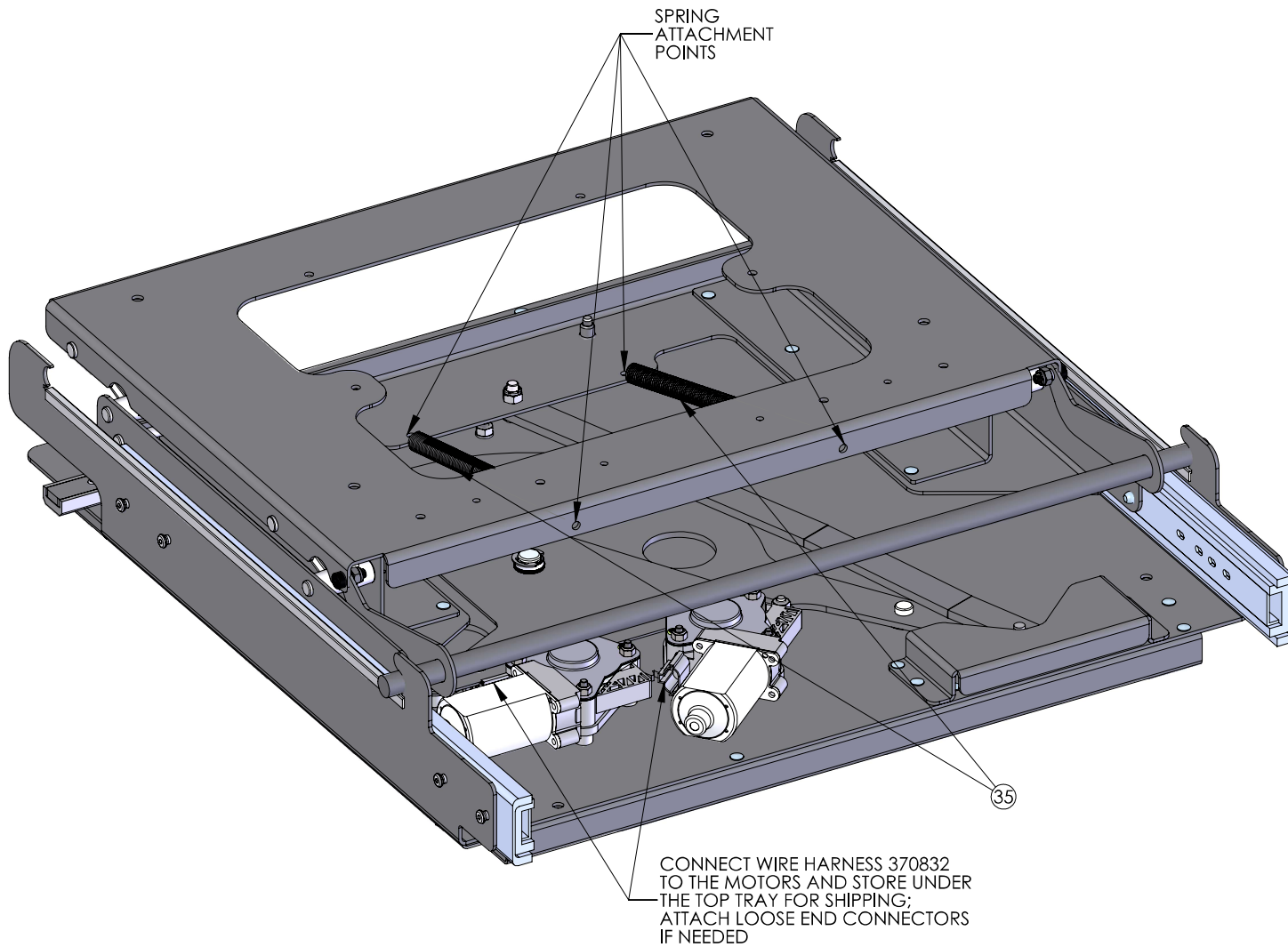


REFERENCE NUMBER:	
MATERIAL TYPE:	
SURFACE QUALITY:	
MATERIAL THICKNESS ±.005:	
(EXCEPT AS NOTED)	
FINISH GOOD WEIGHT:	83.18
BLANK WEIGHT:	
BLANK SIZE:	



TITLE:		STEP WELL COVER STL ELEC 27.44 X 26.50			
UNLESS OTHERWISE SPECIFIED		TOLERANCES (EXCEPT AS NOTED)		<div></div> <div>THE INFORMATION CONTAINED IN THIS DRAWING IS THE SOLE PROPERTY OF LIPPERT. ANY REPRODUCTION IN PART OR AS A WHOLE WITHOUT THE WRITTEN PERMISSION OF LIPPERT IS PROHIBITED.</div>	
1. ALL DIMENSIONS ARE IN INCHES		DECIMAL .X ±.1 .XX ±.03 .XXX ±.015			
2. BREAK SHARP EDGES & DEBURR					
3. MATERIAL & FINISH TO BE AS NOTED OR SUBSTITUTED WITH AN APPROVED AND TESTED EQUIVALENT					
FILLETS R.015		FINISH	✓	DWG. NO. 705247	
THIRD ANGLE PROJECTION				SIZE B	DATE: 11/30/2017
				SCALE: 1:16	REV. C
		FRACTIONAL ±1/16		ENGINEER NF	
		ANGULAR ±1°		DRAFTSMAN NF	
				APPROVED BY	
				SHEET 4 OF 6	



TITLE:		STEP WELL COVER STL ELEC 27.44 X 26.50						
UNLESS OTHERWISE SPECIFIED		TOLERANCES (EXCEPT AS NOTED)		<div></div> <div>THE INFORMATION CONTAINED IN THIS DRAWING IS THE SOLE PROPERTY OF LIPPERT. ANY REPRODUCTION IN PART OR AS A WHOLE WITHOUT THE WRITTEN PERMISSION OF LIPPERT IS PROHIBITED.</div>				
1. ALL DIMENSIONS ARE IN INCHES		DECIMAL .X ±.1						
2. BREAK SHARP EDGES & DEBURR		.XX ±.03						
3. MATERIAL & FINISH TO BE AS NOTED OR SUBSTITUTED WITH AN APPROVED AND TESTED EQUIVALENT		.XXX ±.015						
FILLETS R.015		FINISH 		DWG. NO.		SIZE	DATE: 11/30/2017	REV.
THIRD ANGLE PROJECTION		FRACTIONAL ±1/16		705247		B	SCALE: 1:12	C
		ANGULAR ±1°		ENGINEER		DRAFTSMAN	APPROVED BY	
				NF		NF	SHEET 5 OF 6	
		</						



REFERENCE NUMBER:	
MATERIAL TYPE:	
SURFACE QUALITY:	
MATERIAL THICKNESS $\pm .005$:	
(EXCEPT AS NOTED)	
FINISH GOOD WEIGHT:	83.18
BLANK WEIGHT:	
BLANK SIZE:	

TITLE:		STEP WELL COVER STL ELEC 27.44 X 26.50							
UNLESS OTHERWISE SPECIFIED		TOLERANCES (EXCEPT AS NOTED)		<div></div> <div>THE INFORMATION CONTAINED IN THIS DRAWING IS THE SOLE PROPERTY OF LIPPERT. ANY REPRODUCTION IN PART OR AS A WHOLE WITHOUT THE WRITTEN PERMISSION OF LIPPERT IS PROHIBITED.</div>					
1. ALL DIMENSIONS ARE IN INCHES		DECIMAL						.X ± .1	
2. BREAK SHARP EDGES & DEBURR		.XX ± .03							
3. MATERIAL & FINISH TO BE AS NOTED OR SUBSTITUTED WITH AN APPROVED AND TESTED EQUIVALENT		.XXX ± .015							
FILLETS R.015		FINISH <input checked="" type="checkbox"/>		DWG. NO.		SIZE	DATE: 11/30/2017	REV.	
				705247		B	SCALE: 1:24	C	
THIRD ANGLE PROJECTION		FRACTIONAL ± 1/16		ENGINEER		APPROVED BY		SHEET 6 OF 6	
		ANGULAR ± 1°		NF		NF			