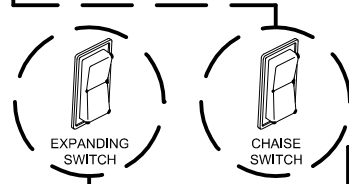
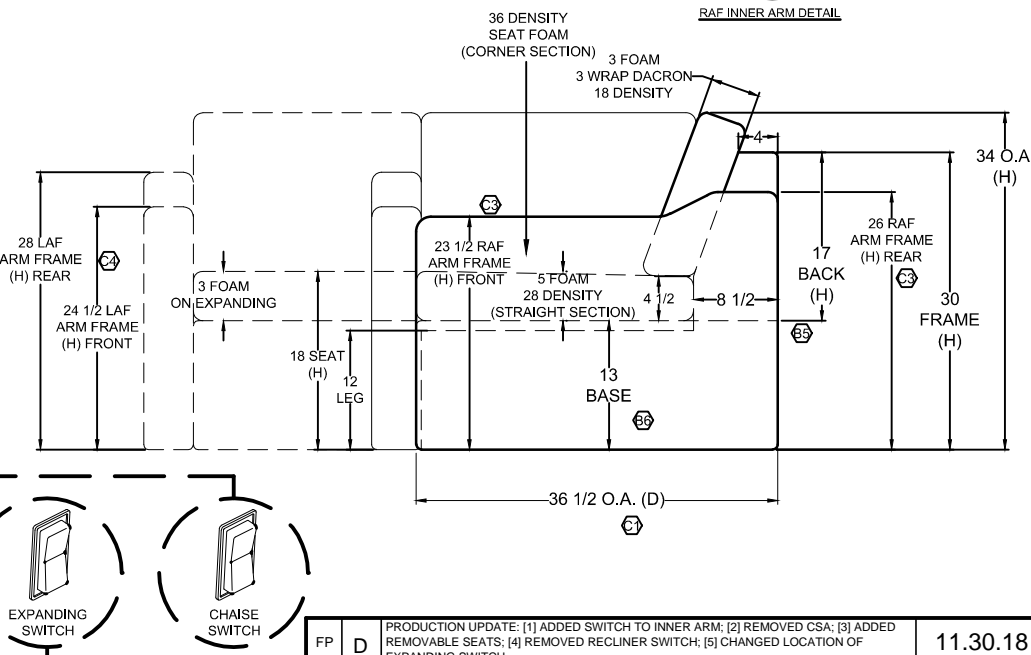
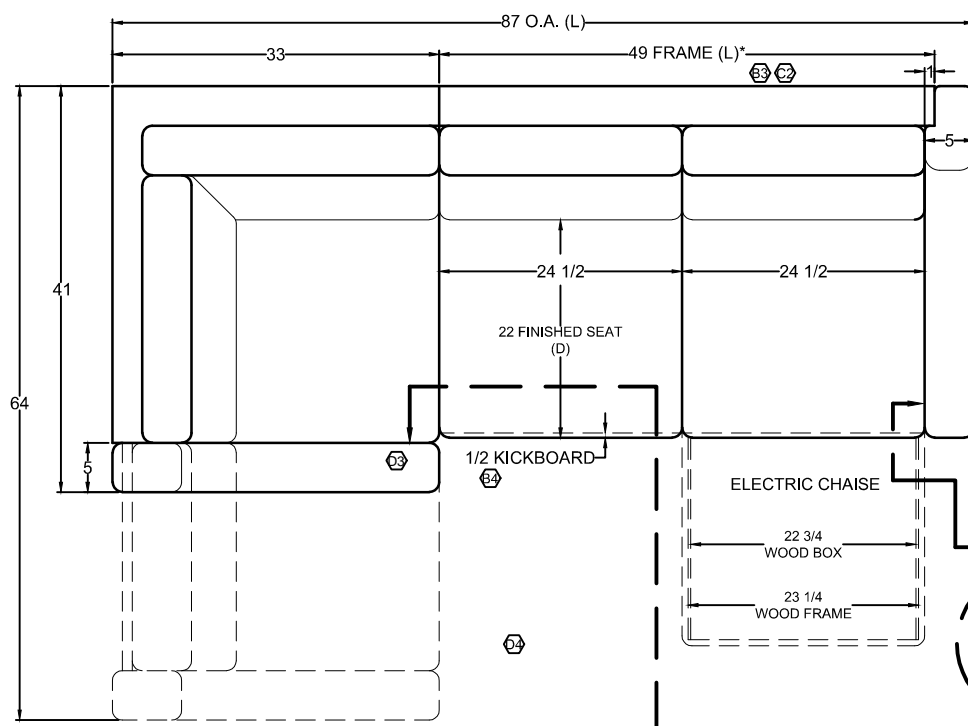
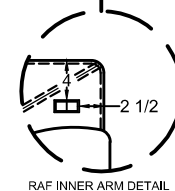
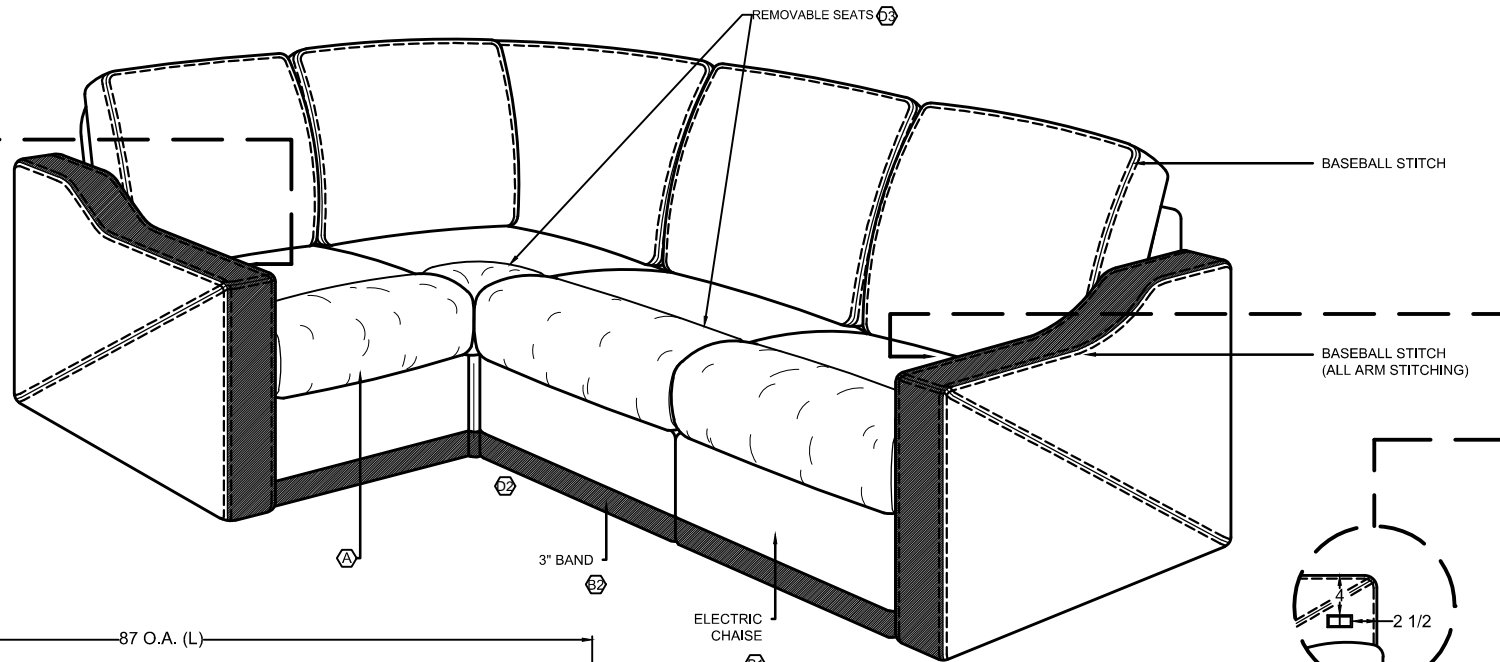
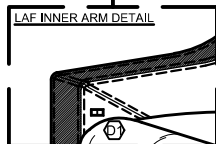


□ = MAIN
■ = ACCENT



TITLE
2019 MOUNTAIN AIRE
87" x 64"/41" FULL ELECTRIC LAF
EXP L-SECTIONAL SOFA W/ RAF ELECTRIC CHAISE

DWG. NO.
VI4000562
REV. **D**
APV **FTBM**
DATE **09.08.17**
A.CERVANTES

SCALE 1:1
DO NOT SCALE DRAWING.
UNLESS OTHERWISE SPECIFIED DIMENSIONS ARE IN INCHES.

FP	D	PRODUCTION UPDATE: [1] ADDED SWITCH TO INNER ARM; [2] REMOVED CSA; [3] ADDED REMOVABLE SEATS; [4] REMOVED RECLINER SWITCH; [5] CHANGED LOCATION OF EXPANDING SWITCH.	11.30.18
JA	C	PER RL PRODUCTION, [1] CHANGED O.A. DEPTH TO 38-1/2"; WAS 35-1/2"; [2] CHANGED FRAME WIDTH TO 49"; WAS 50"; [3] UPDATED RAF ARM FRAME HEIGHTS TO 23-1/2" FRONT & 26" REAR. [4] ADDED LAF ARM FRAME HEIGHTS OF 24-1/2" FRONT AND 28" REAR.	10.26.18
JA	B	[1] ADDED RAF ELECTRIC CHAISE. [2] REMOVED TOE KICK. [3] CHANGED FRAME WIDTH TO 50"; WAS 49". [4] CHANGED KICKBOARD TO 1/2"; WAS 2-1/2"; [5] CHANGED BACK FRAME HEIGHT TO 17"; WAS 18". [6] ADDED 13" BASE HEIGHT DIMENSION TO DRAWING. (REF ORDER #0131646)	09.26.18
JA	A	PER RL. REMOVED CUSHION WRAP FROM SEATS.	02.19.18

REVISIONS

THIS DRAWING IS THE PROPERTY OF VILLA INTERNATIONAL MFG. ALL RIGHTS RESERVED.