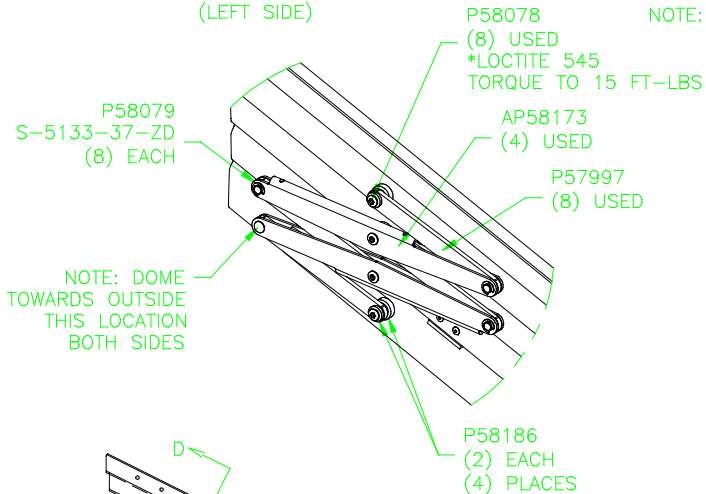
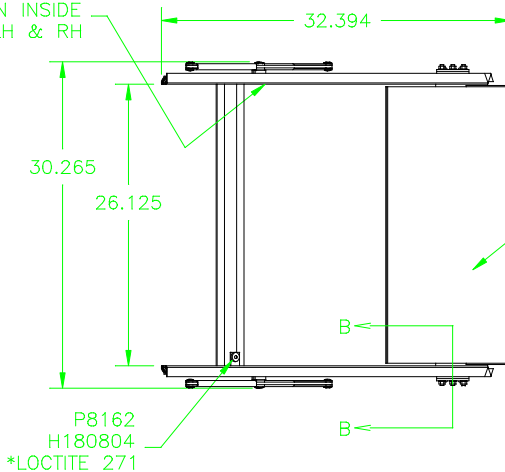


			HWH I-80 EXIT 267 SOUTH RT 1 MOSCOW, IOWA 52760		
			SCALE 1:3	DATE 19OCT18	DRAWN BY .
1	15JUN20	REV AP59081 & UPD	STEP C/MEC/3S/OSS/26.125		
NO.	DATE	REVISION			
THE INFORMATION DISCLOSED ON THIS DRAWING IS CONFIDENTIAL AND MUST NOT BE DISCLOSED OR USED IN ANY MANNER WHICH WILL BE DETRIMENTAL TO THE HWH CORPORATION			DRAWING NUMBER AP57999 B/B		

DETAIL-A  
(LEFT SIDE)

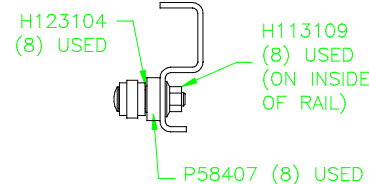


M751046 (30.600")  
NOTE: PLACE TAPE ON INSIDE OF TOP RAIL, LH & RH

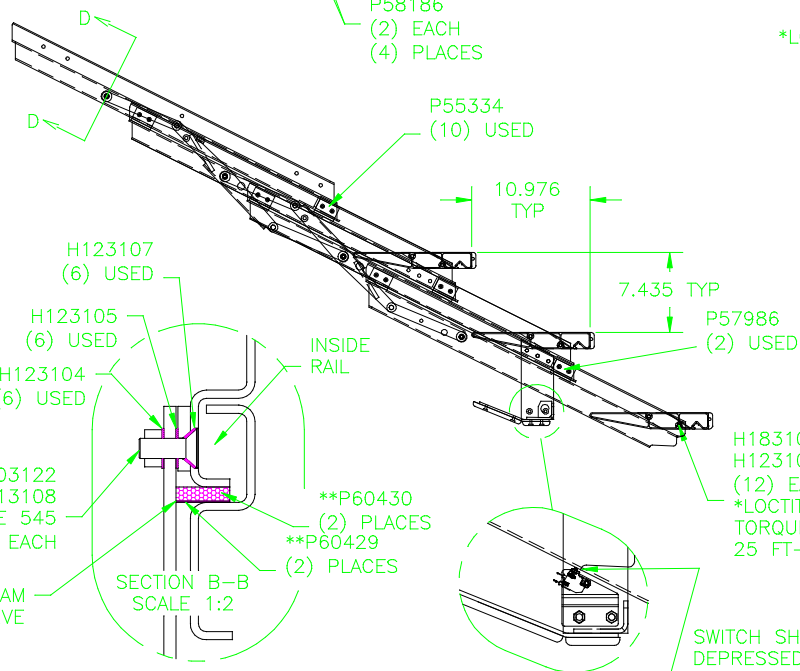


NOTE: PAINT ALL EXPOSED RIVETS AND BOLTS WITH M751223 BLACK ULTRA PRIMER.

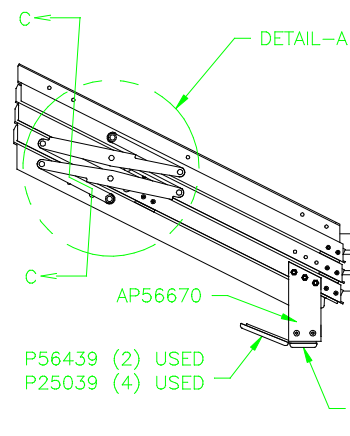
\*\*NOTE: BOND P60430 TO P60429, AND THEN TO RAIL WITH M751011. ROUGHEN AREA TO BE CLEANED WITH SCOTCHBRITE AND CLEAN WITH ACETONE. CENTER PARTS BEHIND AP56670.



SECTION D-D  
SCALE 1:3  
TYP



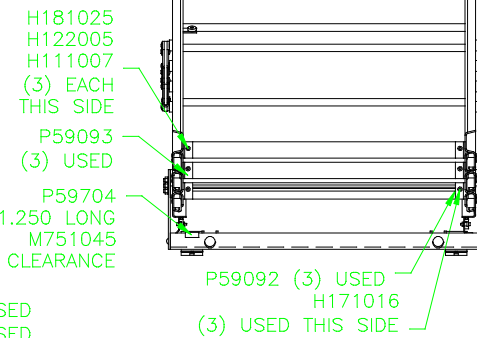
SWITCH SHOULD BE DEPRESSED IN THIS POSITION AND OPEN WHEN BOTTOM STEP IS LIFTED, BOTH SIDES.



NOTE: CHECK CLEARANCE

LEFT HAND RAILS  
TOP TO BOTTOM  
P58453  
AP58303  
AP58305  
AP58175

RIGHT HAND RAILS  
TOP TO BOTTOM  
P58452  
AP58302  
AP58304  
AP58177



\*LOCTITE NOTES:  
1. CLEAN ALL THREADS WITH ACETONE, AND ALLOW TO DRY.  
2. SPRAY ALL INTERNAL AND EXTERNAL THREADS WITH LOCTITE 7649 PRIMER "N" AND ALLOW TO DRY.  
3. APPLY SEVERAL DROPS OF LOCTITE TO MALE THREADS.

			HWH I-80 EXIT 267 SOUTH RT 1 MOSCOW, IOWA 52760	
3	20AUG19	ADDED P60430 & P60429	SCALE 1:1	DATE 19OCT18
2	02MAY19	UPD LOCATION OF P58214	DRAWN BY .	
1	02MAY19	UPD AP58175 & AP58177	STEP C/MEC/3S/OSS/26.125	
NO.	DATE	REVISION		
THE INFORMATION DISCLOSED ON THIS DRAWING IS CONFIDENTIAL AND MUST NOT BE DISCLOSED OR USED IN ANY MANNER WHICH WILL BE DETRIMENTAL TO THE HWH CORPORATION			DRAWING NUMBER AP57999 A/B	