

(A) OTTOMAN SWITCH

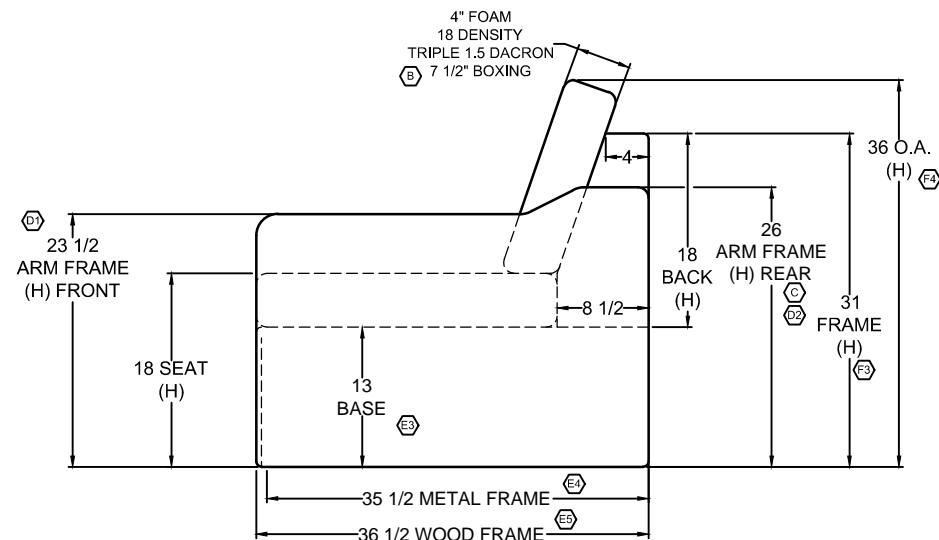
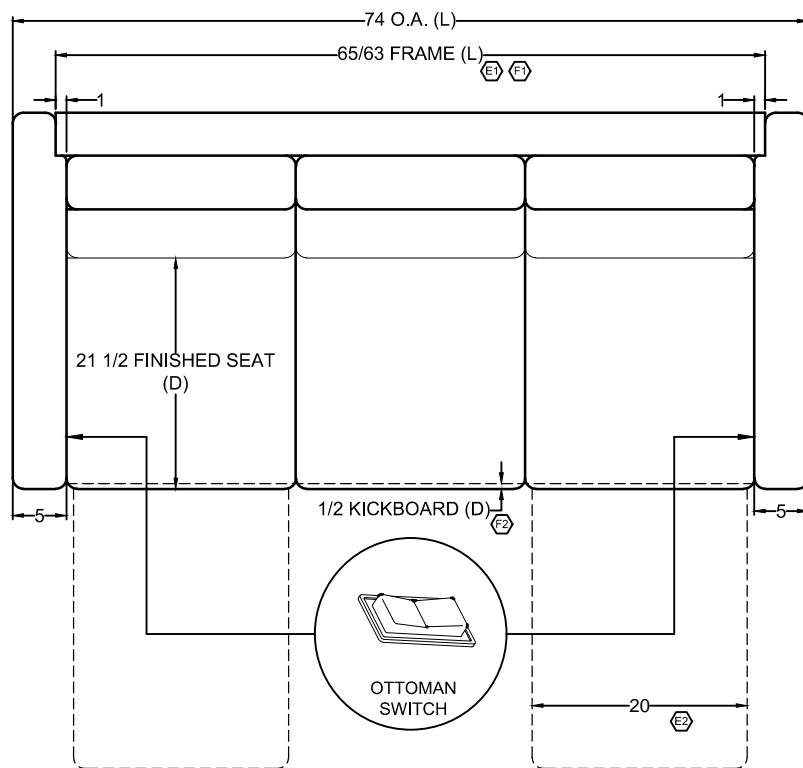
1/3RD LOWER BAND

ELECTRIC OTTOMAN

ELECTRIC OTTOMAN

BASEBALL STITCH

BASEBALL STITCH
(ALL ARM STITCHING)



LB	F	WOOD UPDATE: [1] CHANGED BACK FRAME TO 65\"/>
LB	E	PRODUCTION UPDATE: [1] CHANGED BACK FRAME LENGTH TO 64\"/>
JA	D	PER RL, [1] UPDATE FRONT ARM FRAME HEIGHT TO SHOW AS 23-1/2\"/>
JA	C	PRODUCTION UPDATE: ADDED 26\"/>
AC	B	CHANGED FOAM INFORMATION; WAS FIBER FILL. (REF. ECO#069-2018)
AC	A	RELOCATED ELECTRIC OTTOMAN SWITCHES TO BE 4\"/>