

□ = MAIN
■ = ACCENT

⬡ OTTOMAN SWITCH

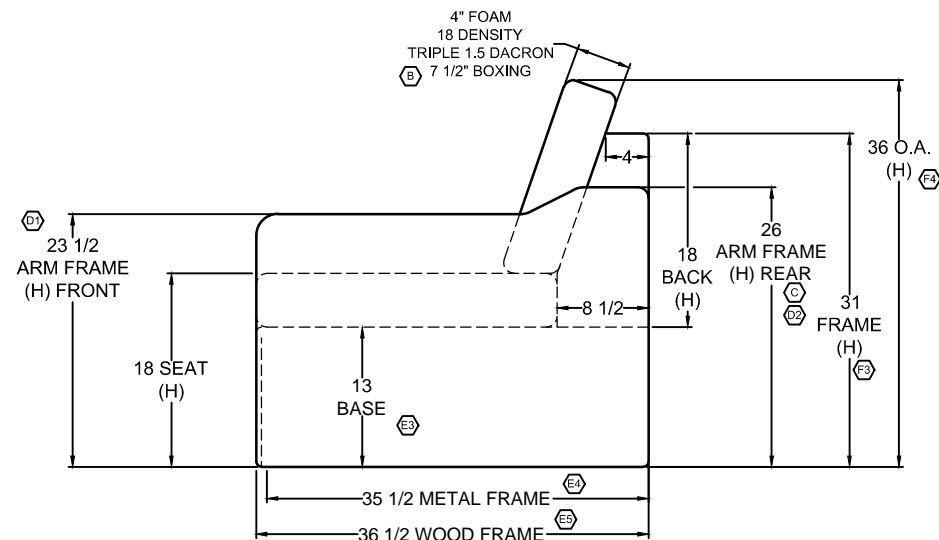
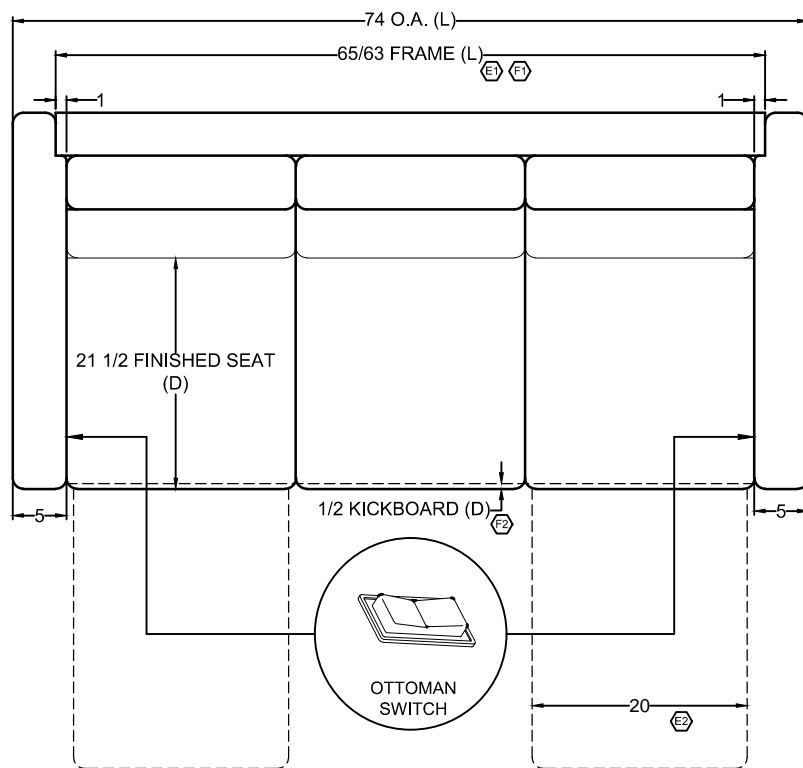
1/3RD LOWER BAND

ELECTRIC OTTOMAN

ELECTRIC OTTOMAN

BASEBALL STITCH

BASEBALL STITCH
(ALL ARM STITCHING)



LB	F	WOOD UPDATE: [1] CHANGED BACK FRAME TO 65"/63"; WAS 64"/66". [2] CHANGED KICKBOARD DEPTH TO 1/2"; WAS 2 1/2". [3] CHANGED HEIGHT OF BACK FRAME TO 31"; WAS 30". [4] CHANGED OVERALL HEIGHT TO 36"; WAS 33".	10.03.19
LB	E	PRODUCTION UPDATE: [1] CHANGED BACK FRAME LENGTH TO 64"/66"; WAS 66". [2] ADDED CHAISE WIDTH DIMENSION. [3] ADDED BASE HEIGHT DIMENSION. [4] ADDED METAL FRAME DEPTH DIMENSION. [5] ADDED WOOD FRAME DEPTH DIMENSION.	05.20.19
JA	D	PER RL, [1] UPDATE FRONT ARM FRAME HEIGHT TO SHOW AS 23-1/2" FRAME; WAS 24". [2] UPDATE REAR ARM FRAME TO SHOW AS 26"; WAS 27".	10.26.18
JA	C	PRODUCTION UPDATE: ADDED 26" REAR ARM HEIGHT DIMENSION TO DRAWING.	10.16.18
AC	B	CHANGED FOAM INFORMATION; WAS FIBER FILL. (REF. ECO#069-2018)	09.20.18
AC	A	RELOCATED ELECTRIC OTTOMAN SWITCHES TO BE 4" DOWN AND 2-1/2" FROM THE FRONT OF THE ARM FRAME.	08.17.18