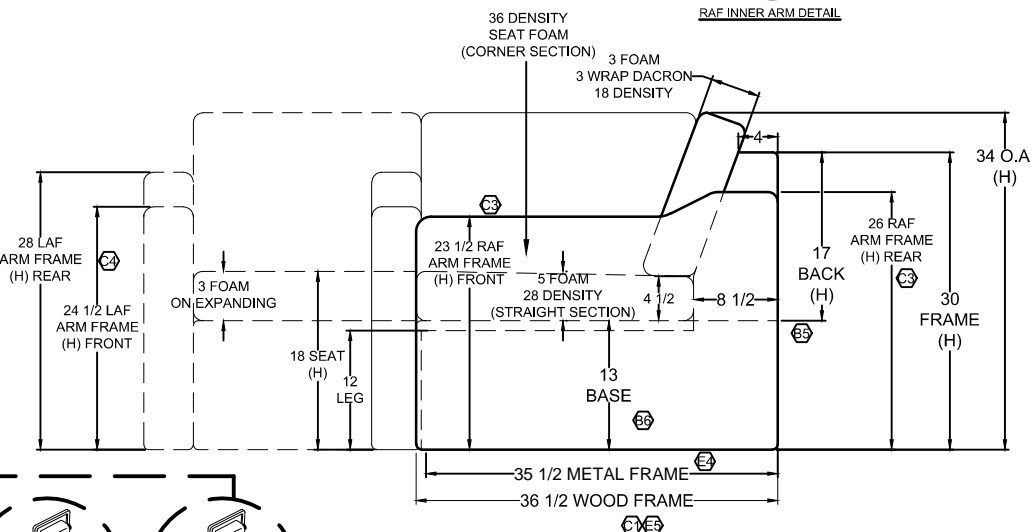
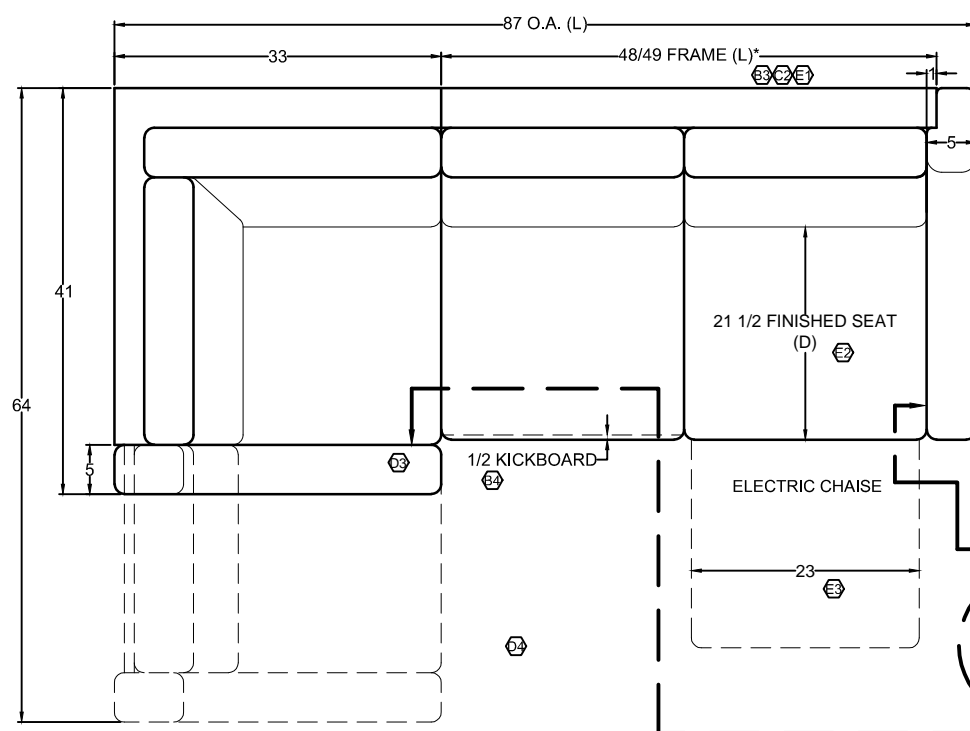
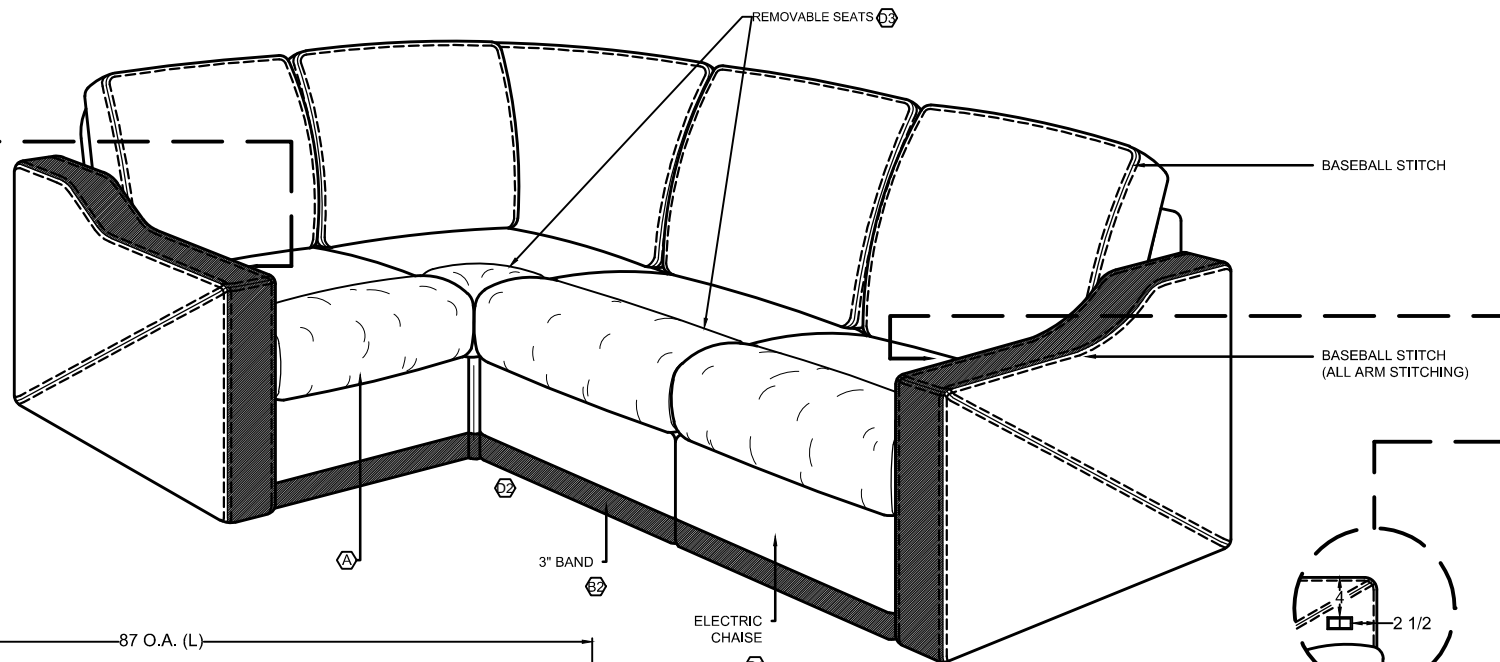


□ = MAIN
■ = ACCENT



LB	E	PRODUCTION UPDATE: [1] CHANGED BACK FRAME LENGTH TO 48/49"; WAS 49". [2] CHANGED FINISHED SEAT DEPTH TO 21 1/2"; WAS 22". [3] CHANGED WOOD FRAME WIDTH TO 23"; WAS 23 1/4". [4] ADDED METAL FRAME DEPTH DIMENSION. [5] ADDED WOOD FRAME DEPTH DIMENSION.	05.30.19
FP	D	PRODUCTION UPDATE: [1] ADDED SWITCH TO INNER ARM; [2] REMOVED CSA; [3] ADDED REMOVABLE SEATS; [4] REMOVED RECLINER SWITCH; [5] CHANGED LOCATION OF EXPANDING SWITCH.	11.30.18
JA	C	PER RL PRODUCTION: [1] CHANGED O.A. DEPTH TO 36-1/2"; WAS 35-1/2". [2] CHANGED FRAME WIDTH TO 49"; WAS 50". [3] UPDATED RAF ARM FRAME HEIGHTS TO 23-1/2" FRONT & 26" REAR. [4] ADDED LAF ARM FRAME HEIGHTS OF 24-1/2" FRONT AND 28" REAR.	10.26.18
JA	B	[1] ADDED RAF ELECTRIC CHAISE. [2] REMOVED TOE KICK. [3] CHANGED FRAME WIDTH TO 50"; WAS 49". [4] CHANGED KICKBOARD TO 1/2"; WAS 2-1/2". [5] CHANGED BACK FRAME HEIGHT TO 17"; WAS 18". [6] ADDED 13" BASE HEIGHT DIMENSION TO DRAWING. (REF ORDER #0131646)	09.26.18
JA	A	PER RL. REMOVED CUSHION WRAP FROM SEATS.	02.19.18

REVISIONS



13760 Midway St.
Cerritos, CA 90703
Tel 562-404-8111
Fax 562-404-7781

TITLE
2019 MOUNTAIN AIRE
87" x 64"/41" FULL ELECTRIC LAF
EXP L-SECTIONAL SOFA W/ RAF ELECTRIC CHAISE

DWG. NO.
VI4000562
REV.
E
APV
FTBM
DATE
09.08.17
DR
A.CERVANTES

SCALE 1:1
DO NOT SCALE
DRAWING.
UNLESS OTHERWISE
SPECIFIED DIMENSIONS
ARE IN INCHES.

THIS DRAWING IS THE PROPERTY OF VILLA INTERNATIONAL MFG. ALL RIGHTS RESERVED.