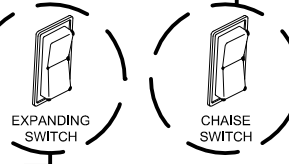
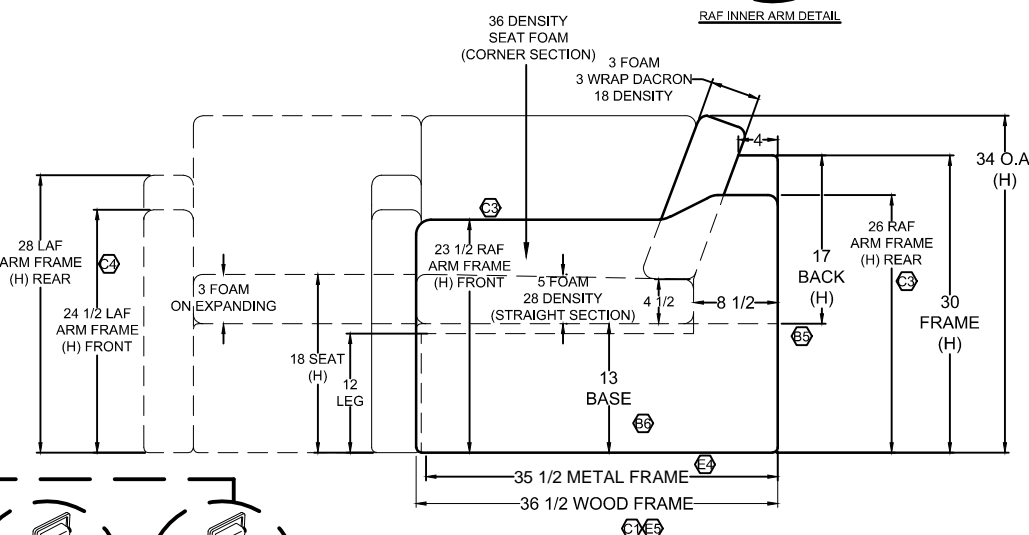
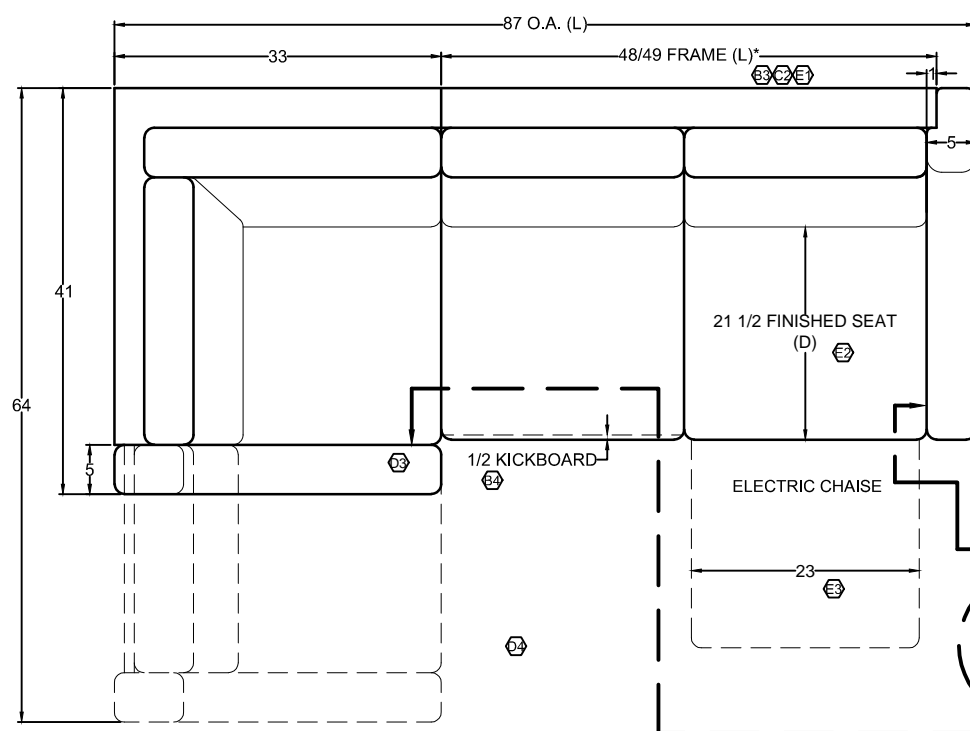
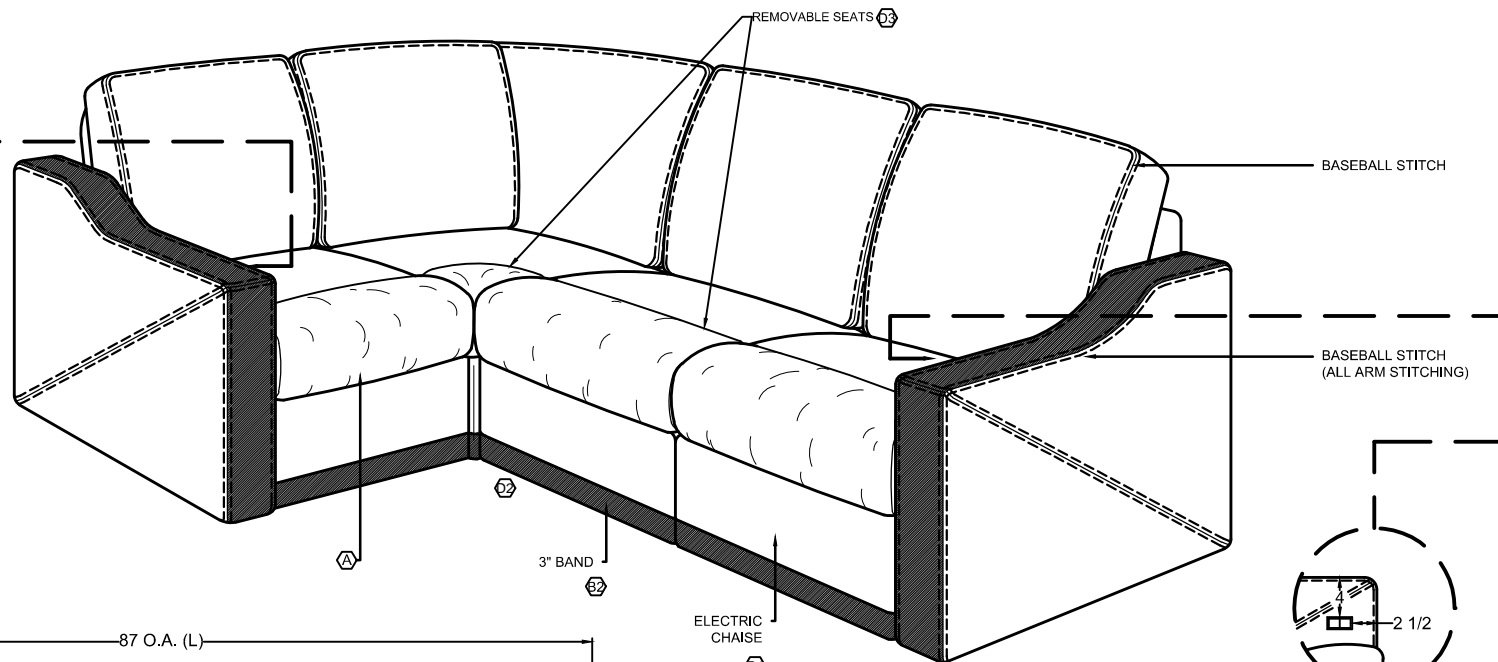


□ = MAIN
■ = ACCENT



LB	E	PRODUCTION UPDATE: [1] CHANGED BACK FRAME LENGTH TO 48/49"; WAS 49". [2] CHANGED FINISHED SEAT DEPTH TO 21 1/2"; WAS 22". [3] CHANGED WOOD FRAME WIDTH TO 23"; WAS 23 1/4". [4] ADDED METAL FRAME DEPTH DIMENSION. [5] ADDED WOOD FRAME DEPTH DIMENSION.	05.30.19
FP	D	PRODUCTION UPDATE: [1] ADDED SWITCH TO INNER ARM; [2] REMOVED CSA; [3] ADDED REMOVABLE SEATS; [4] REMOVED RECLINER SWITCH; [5] CHANGED LOCATION OF EXPANDING SWITCH.	11.30.18
JA	C	PER RL PRODUCTION: [1] CHANGED O.A. DEPTH TO 38-1/2"; WAS 35-1/2". [2] CHANGED FRAME WIDTH TO 49"; WAS 50". [3] UPDATED RAF ARM FRAME HEIGHTS TO 23-1/2" FRONT & 26" REAR. [4] ADDED LAF ARM FRAME HEIGHTS OF 24-1/2" FRONT AND 28" REAR.	10.26.18
JA	B	[1] ADDED RAF ELECTRIC CHAISE. [2] REMOVED TOE KICK. [3] CHANGED FRAME WIDTH TO 50"; WAS 49". [4] CHANGED KICKBOARD TO 1/2"; WAS 2-1/2". [5] CHANGED BACK FRAME HEIGHT TO 17"; WAS 18". [6] ADDED 13" BASE HEIGHT DIMENSION TO DRAWING. (REF ORDER #0131646)	09.26.18
JA	A	PER RL. REMOVED CUSHION WRAP FROM SEATS.	02.19.18