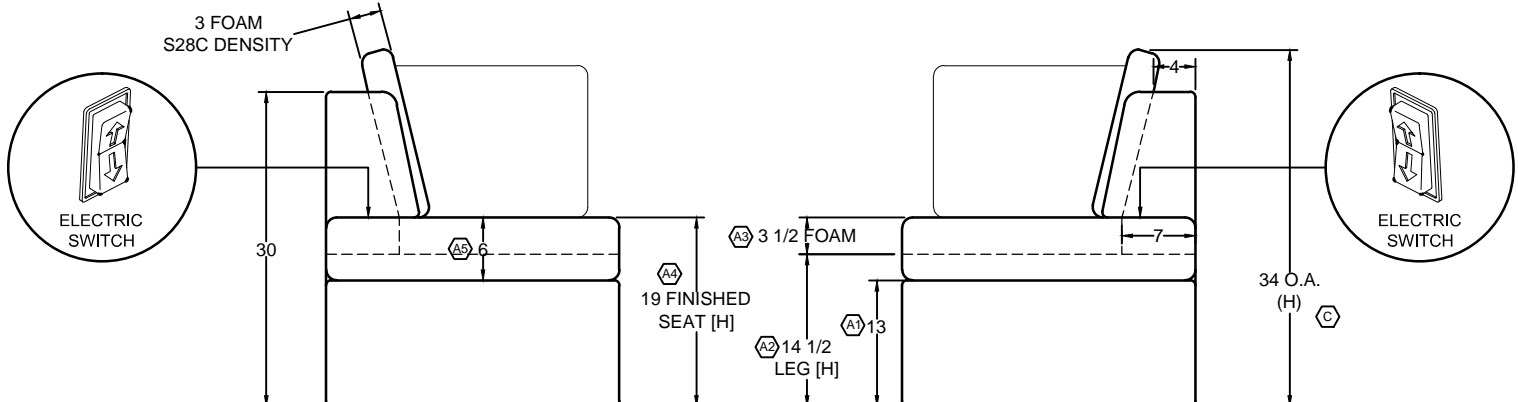
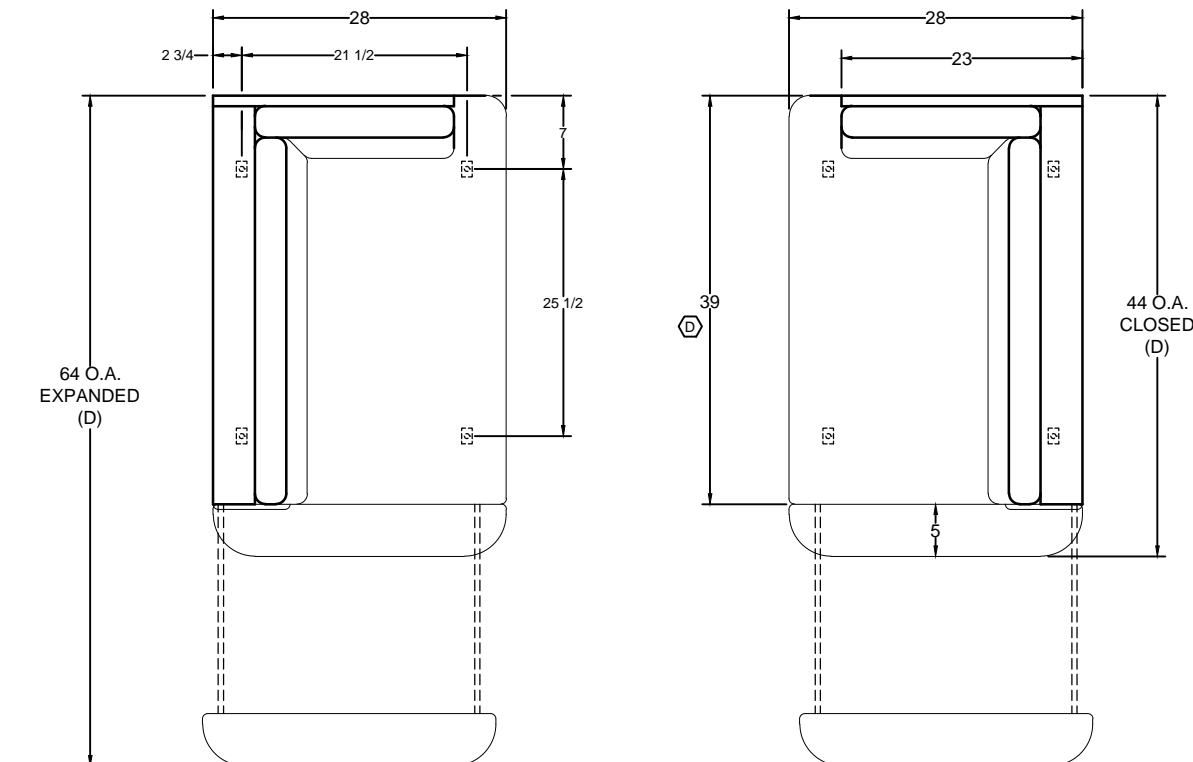
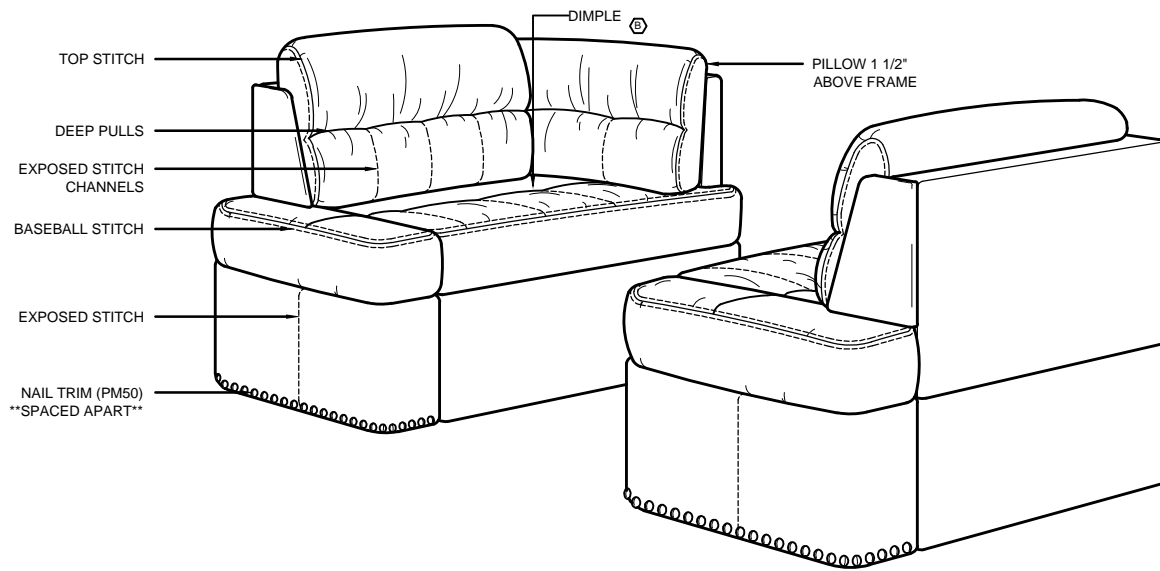


4

3

2

1



| | | | |
|----|---|---|----------|
| LB | D | PER NN: CHANGED FRAME DEPTH TO 39"; WAS 36". | 10.14.19 |
| LB | C | CHANGED OVERALL HEIGHT TO 34"; WAS 35 1/2". (REF. ECO #109-2019) | 10.07.19 |
| LB | B | PRODUCTION UPDATE: ADDED "DIMPLES" DESCRIPTION TO DRAWING. | 04.22.19 |
| AC | A | PER RL: (1) MODIFIED DIMENSION. (2) ADDED LEG HEIGHT DIMENSION. (3) ADDED SEAT FOAM THICKNESS. (4) ADDED FINISHED SEAT HEIGHT. (5) ADDED FINISHED SEAT THICKNESS. | 09.21.18 |

4

3

2

1