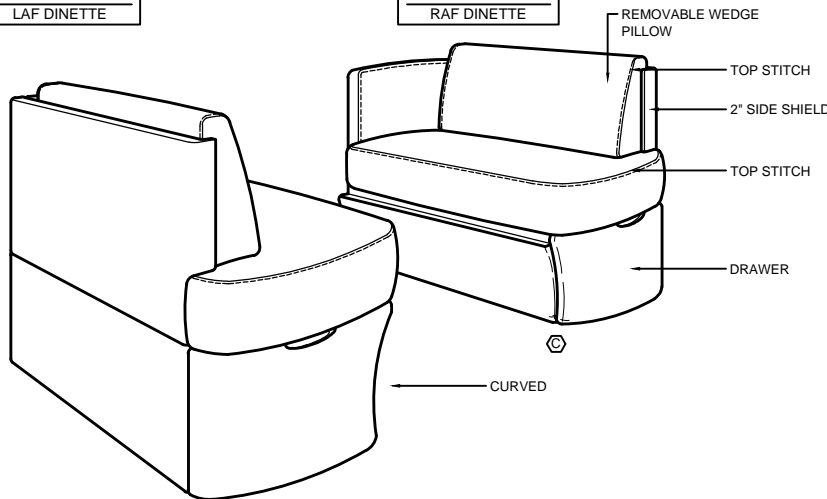


**CF3000556**  
LAF DINETTE

**CF3000557**  
RAF DINETTE

CUT PATTERN  
BACK FRAME NO.  
BASE FRAME NO.  
WOOD PATTERN



**CF3000520**  
TABLE CUSHION

(TABLE CUSHION ALSO ASSOCIATED WITH DRAWING FOR PART #CF3000514)

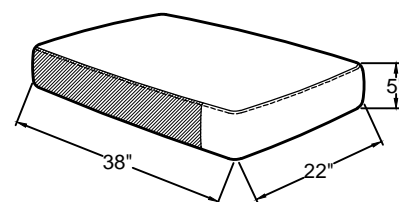
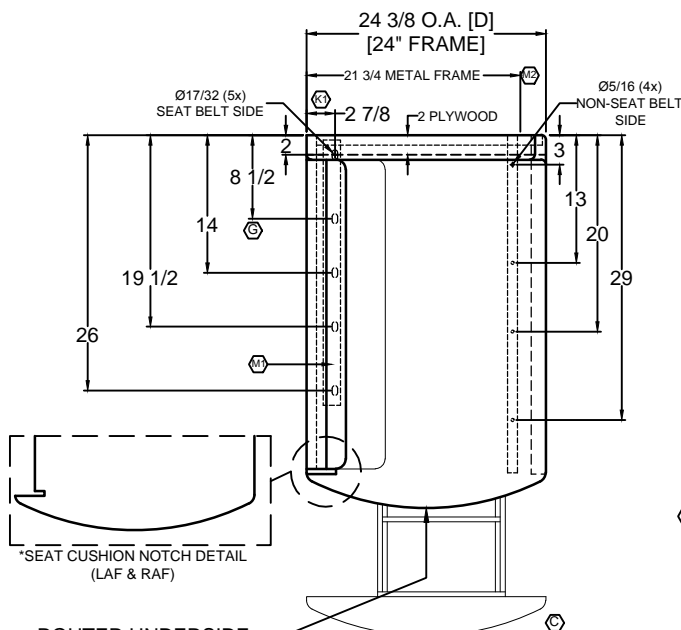
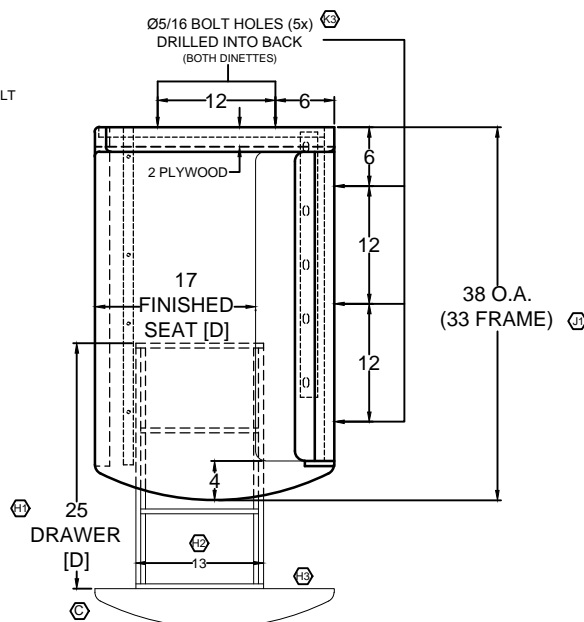


TABLE CUSHION (DECKING ON 3 SIDES)



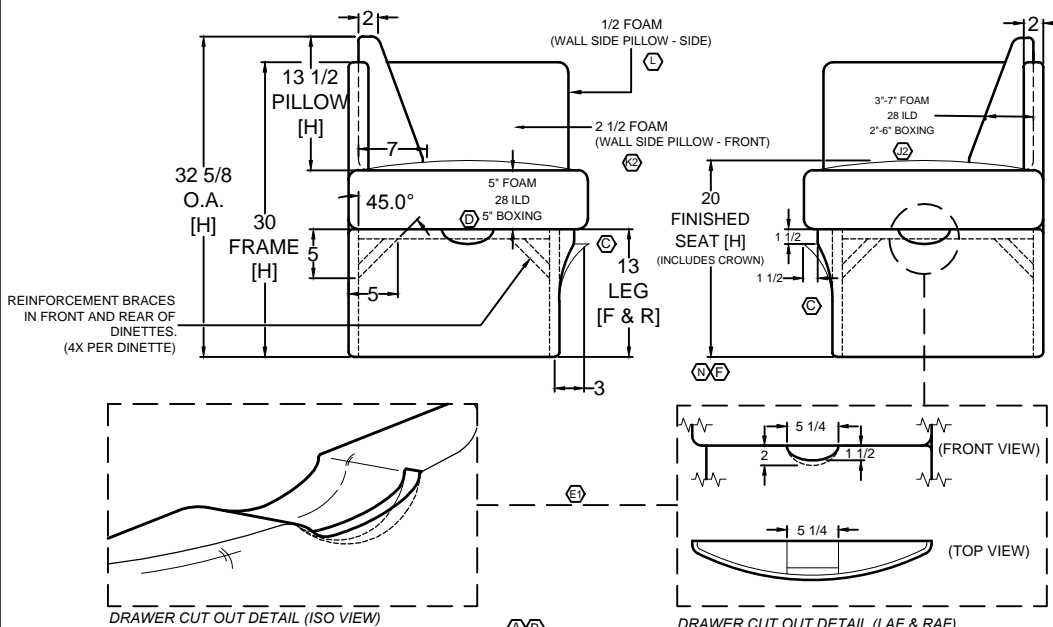
\*SEAT CUSHION NOTCH DETAIL (LAF & RAF)

ROUTER UNDERSIDE OF WOOD SEAT FRAME



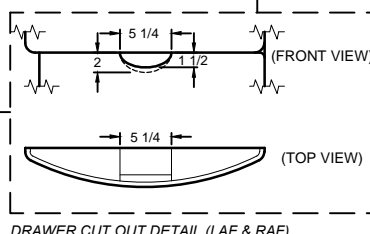
**CF3000556**  
LAF DINETTE

**CF3000557**  
RAF DINETTE



REINFORCEMENT BRACES IN FRONT AND REAR OF DINETTES. (4X PER DINETTE)

DRAWER CUT OUT DETAIL (ISO VIEW)



DRAWER CUT OUT DETAIL (LAF & RAF)

JA	N	PER RL, INCLUDE CROWN OF SEAT CUSHION TO SEAT HEIGHT DIMENSION. CHANGES TO 20", WAS 19".	11.20.19
JA	M	[1] UPDATE BOLT DOWN BRACKET ON ORTHO VIEWS. (REF ECO #071-2019). [2] CHANGE METAL FRAME UNDER WINDOW TO 21-3/4" WITH 3-4" METAL T-O-N FRAME. WAS 22-1/2". (REF. ECO #080-2019)	08.07.19
JA	L	ADD 1/4" FOAM TO THE SIDE OF THE WALL SIDE PILLOW. (REF. ECO #063-2019)	06.13.19
JA	K	[1] CHANGED BOLT TAB SPACING FROM WALL TO 2-7/8". WAS 2". (REF. ECO #046-2019). PER RL, [2] ADD 2-1/2" FOAM TO WALL SIDE PILLOW. [3] ADJUST DRAWING TO SHOW BOLT HOLES GOING INTO THE BACKS OF THE FRAME. WAS SHOWING FROM TOP	05.31.19
JA	J	PER FTBM, [1] CHANGE FRAME DEPTH TO 33". WAS 38". [2] CHANGE BACK PILLOW DENSITY TO 28". WAS 18". DRAWING UPDATES. [3] ADD 5TH BOLT TAB TO RAF DINETTE. CORRECTED BOLT TAB NOTE: CORRECTED SIDE SHIELD DESCRIPTION.	05.01.19
JA	H	PER RL, [1] CHANGE DRAWER DEPTH TO 25". WAS 21". [2] ADD 13" DRAWER WIDTH DIMENSION TO DRAWING. [3] OFFSET DRAWER INWARD.	04.23.19
JA	G	ADDED 5TH BOLT DOWN BRACKET TAB. (REF. ECO #014-2019)	02.20.19
FP	F	PER RL: ADJUSTED SEAT HEIGHT TO 19" WAS 18".	01.24.19
JA	E	[1] ADDED DRAWER FINGER NOTCH DETAIL. [2] ADDED ROUTER NOTE FOR WOOD SEAT FRAME. (REF. ECO #004-2019)	01.15.19
FP	D	ADJUSTED SEAT BOXING TO 5" WAS 6" REFERENCE (ECO 001-2018)	01.02.19
JA	C	PER RL, REMOVE LEDGE FROM DRAWER & REDUCED CURVE FROM DRAWER.	12.11.18
FP	B	PER RL, CHANGED STYLE NAME TO NEWMAR; WAS NEW AIRE.	11.27.2018
JA	A	PER NEWMAR, CHANGE STYLE NAME TO NEW AIRE; WAS BAY STAR.	11.19.18

REVISIONS

**COMFORTFIT**  
13760 Midway St.  
Cerritos, CA 90703  
Tel 562-404-8111  
BY VILLA INTERNATIONAL  
Fax 562-404-7781

TITLE  
**2020 NEWMAR**  
DINETTE SET

DWG. NO. -- REV. N  
DR J. ANCHETA DATE 11.16.18  
FTBM 05.01.19

SCALE 1:1  
DO NOT SCALE DRAWING.  
UNLESS OTHERWISE SPECIFIED DIMENSIONS ARE IN INCHES.

THIS DRAWING IS THE PROPERTY OF VILLA INTERNATIONAL MFG. ALL RIGHTS RESERVED.