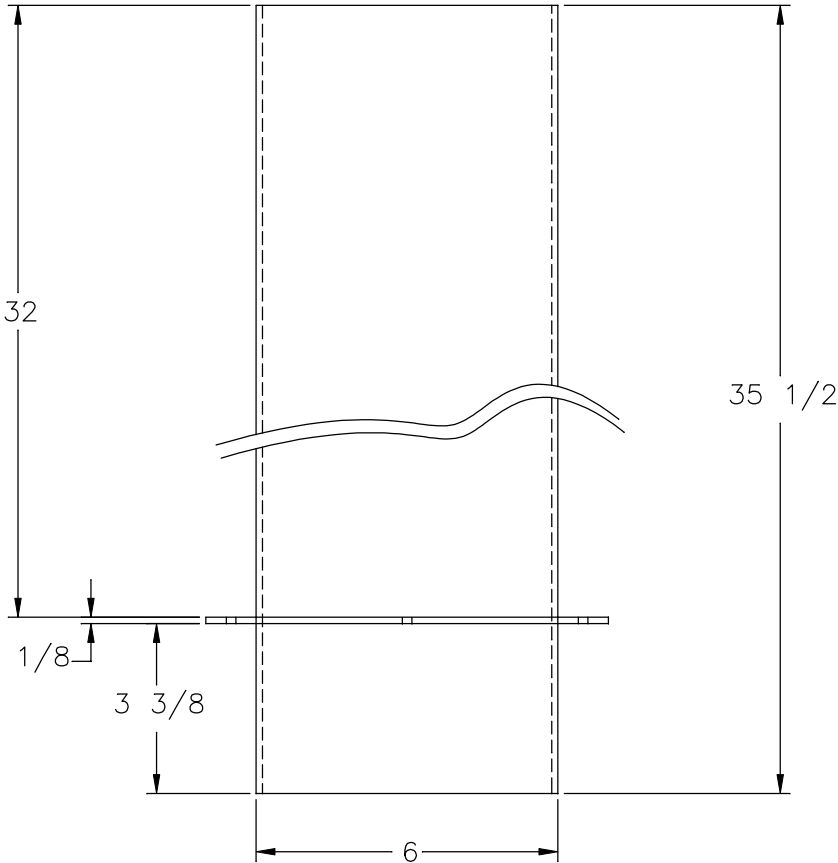
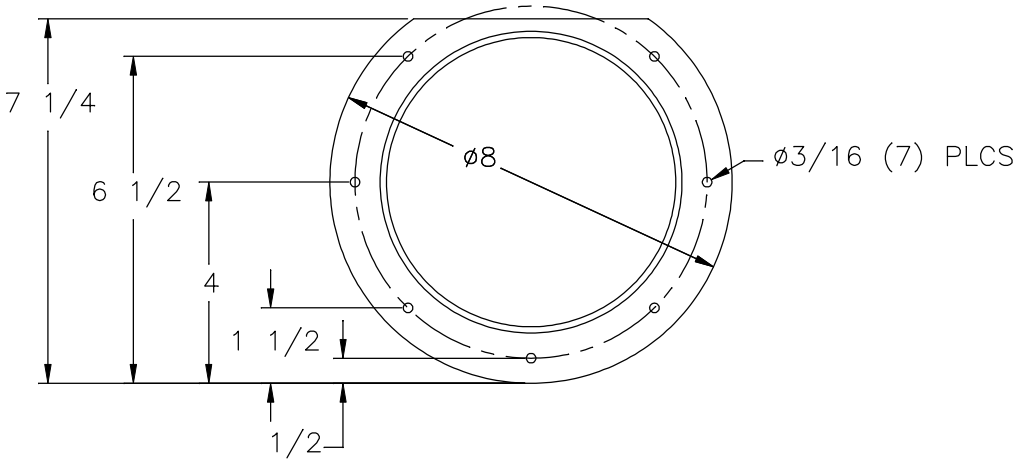
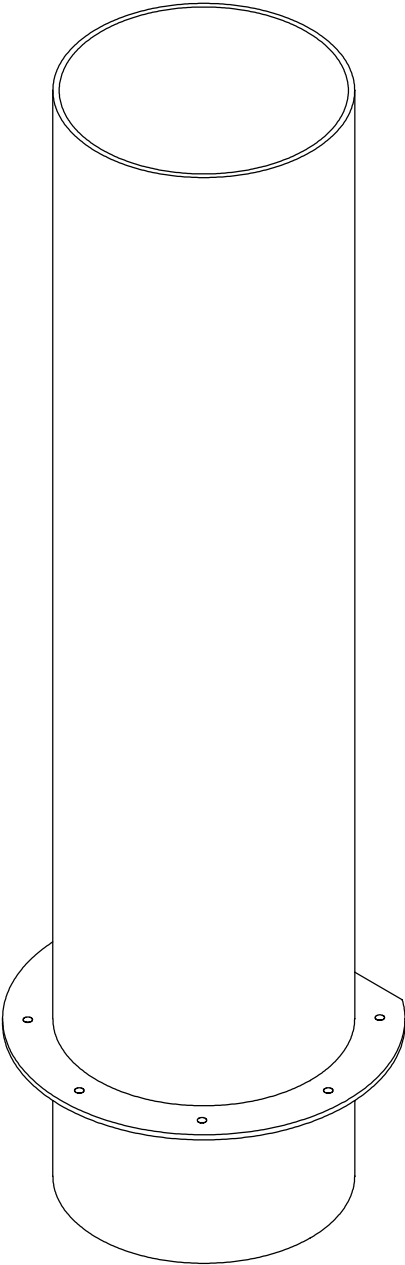


| ITEM # | QTY | NEWMAR # | DESCRIPTION |
|--------|-----|----------|---------------------------------|
| 1 | 1 | 156708 | TUBE AIR INTAKE 6X35-1/2 W/ FLG |



| | | | | | | |
|---|-----------------------|---|--------------------|----------------------|---|------------------|
| NEWMAR CORP P.O. Box 30, Nappanee, IN. 46550 UNITS: INCHES TITLE BLOCK: 75TB | Model: (SEE INDEX) | Sheet 1 OF 1 | Drawn by: G. Y. | Checked by: M. N. | Revision: ADD 1-1/2" TO TUBE BELOW FLANGE, 3-3/8" WAS 1-7/8". OVERALL | By: G. Y. |
| | Title: | I.D. # 2022\ COMPONENTS\ MISC6009 | Date: 11/3/20 | Date: 11/9/20 | LENGTH OF 35-1/2" WAS 34". (2022 ECO #615) | Date:MN 11/17/21 |
| | INTAKE PIPE | | | | Revision: SQUARED UP FLANGE TO BE PERPENDICULAR TO TUBE AND TRIMMED A | By: G. Y. |
| | | | | | FLAT, ADDED 3 HOLES (PCR #220297) | Date:MN 1/22/21 |