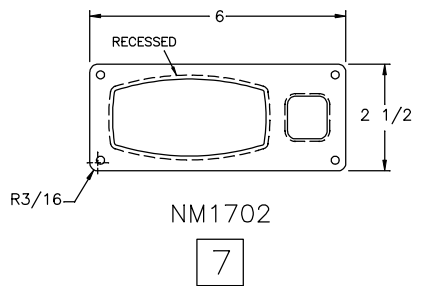
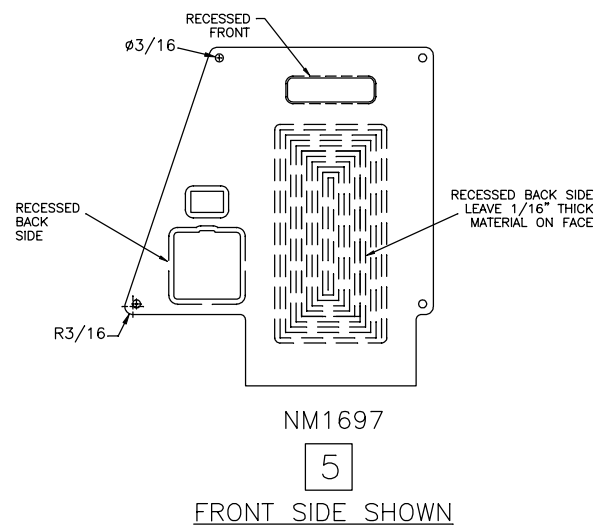
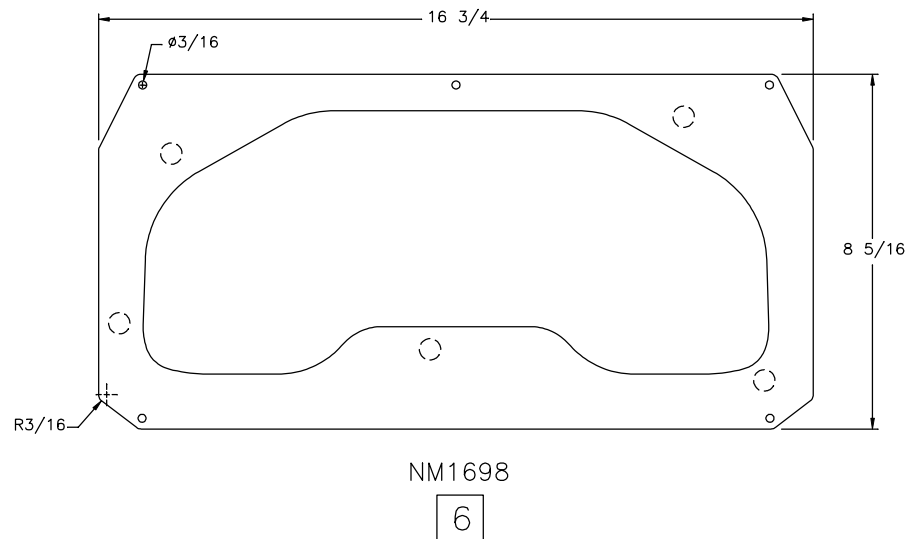
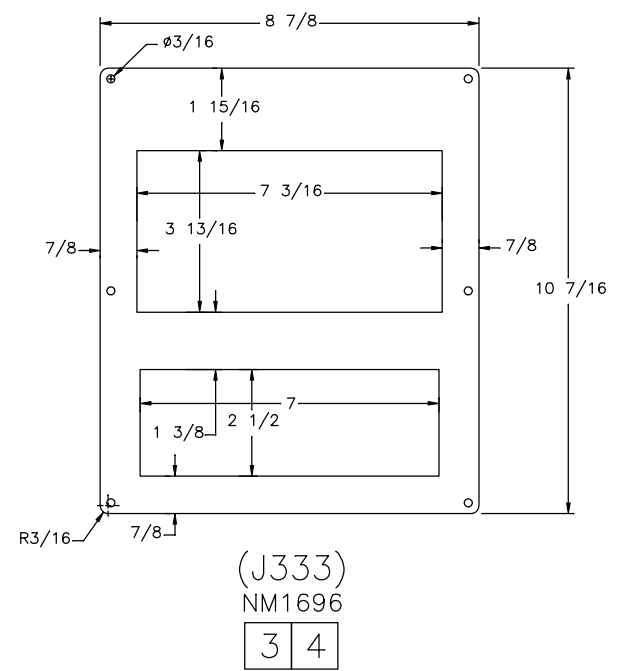
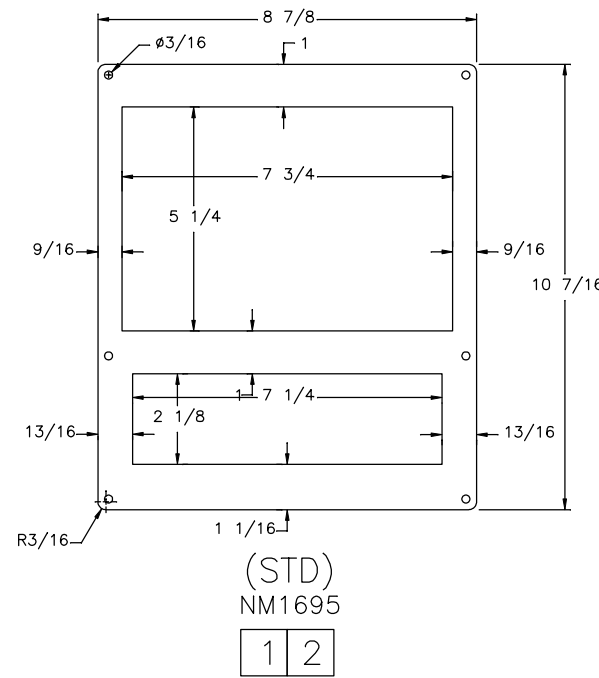


ITEM #	QTY	NEWMAR #	DESCRIPTION
1	1	155255	PANEL MONITOR 22BTCA STANDARD
2	1	157649	SCREEN POCKET VOYAGER 7"
3	1	155256	PANEL MONITOR 22BTCA OPTIONAL
4	1	156689	PANEL POCKET MONITOR
5	1	156688	PANEL LEFT CMPNT W/ WRLS22BTCA
6	1	155257	PANEL INSTR W/SMART CHIME
7	1	155258	PANEL LEFT COMPONENT



**NEWMAR CORP**  
P.O. Box 30,  
Nappanee, IN. 46550

UNITS: INCHES  
TITLE BLOCK: 1TB

Model: BTCA (SEE INDEX) (J333)  
Title: DASH PANELS

Sheet: 1 OF 1  
I.D. # 2022\COMPONENTS\BT\_DASH\_PANELS

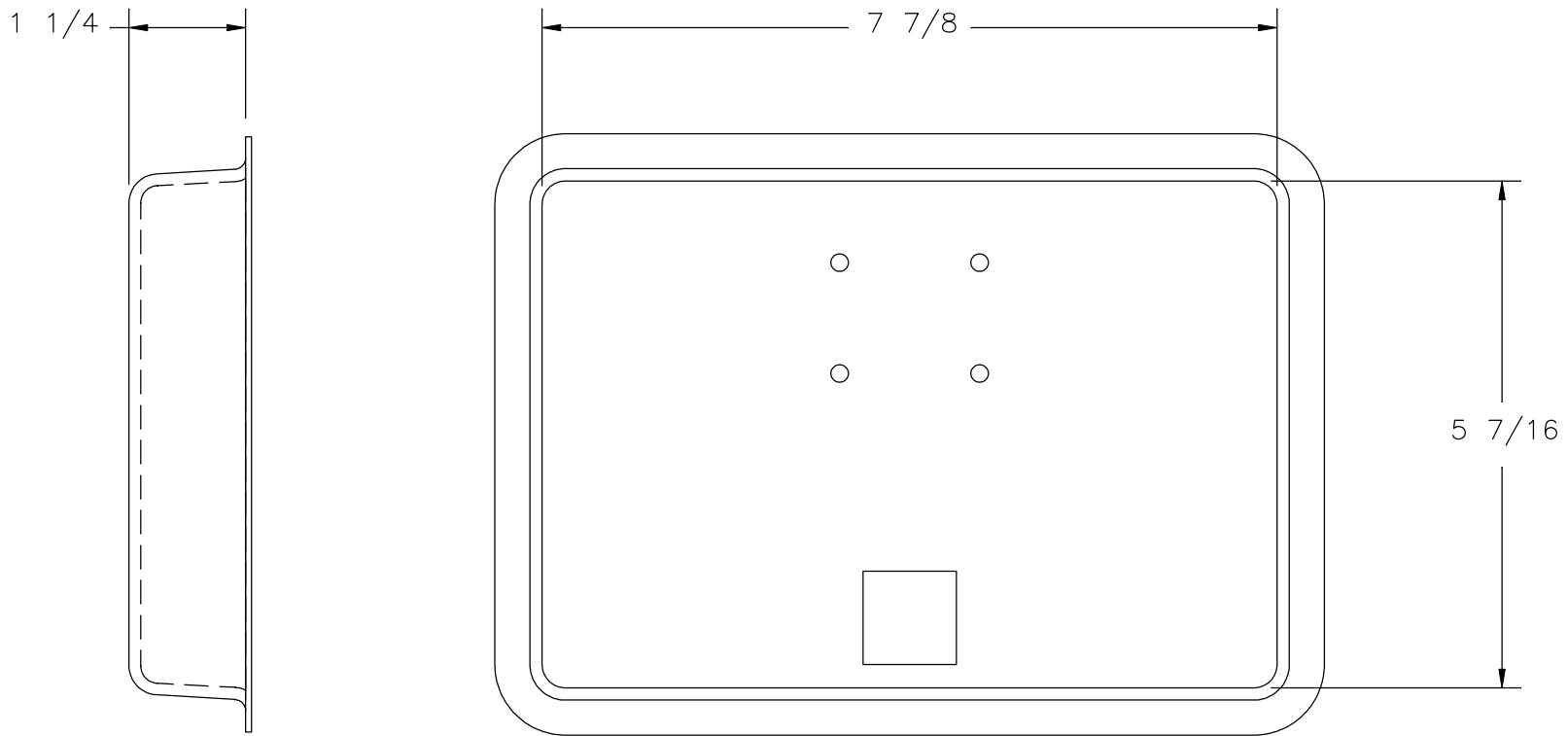
Drawn by: C. C.  
Date: 8/12/20

Checked by: D. E.  
Date: 11/5/20

Revision: UPDATED BILL OF MATERIAL ITEM NUMBERS TO CORRECTLY CORRESPOND TO REFERENCES SHOWN ON THE DRAWING. (PCR #221264)  
Revision: REDUCED ALL 4 EDGES OF TOP CUTOUT FOR OPT. J333 BY 3/64"; 7 3/16" ILO 7 1/4", 3 13/16" ILO 4 5/16", 7/8" ILO 13/16", 1 15/16 ILO 1 7/8", 1 3/8" ILO 7/8" (PCR #220740)

By: M. G.  
Date: DE 8/31/21  
By: J. M.  
Date: DE 5/13/21

<i>ITEM #</i>	<i>QTY</i>	<i>NEWMAR #</i>	<i>DESCRIPTION</i>
1	1	157649	SCREEN POCKET VOYAGER 7"



<b>NEWMAR CORP</b> P.O. Box 30, Nappanee, IN. 46550 UNITS: INCHES TITLE BLOCK: 3125TB	Model: BTCA (SEE INDEX)	Sheet 1 OF 1	Drawn by: J. H.	Checked by: D. E.	Revision: NEW PRINT FOR M.Y. 2022 (PCR #220340)	By: C. C.
	Title: POCKET PANEL VOYAGER	I.D. # 2022\ COMPONENTS\ MISC6012	Date: 1/25/21	Date: 2/1/21	Revision:	Date: DE 2/1/21
						By:
						Date: