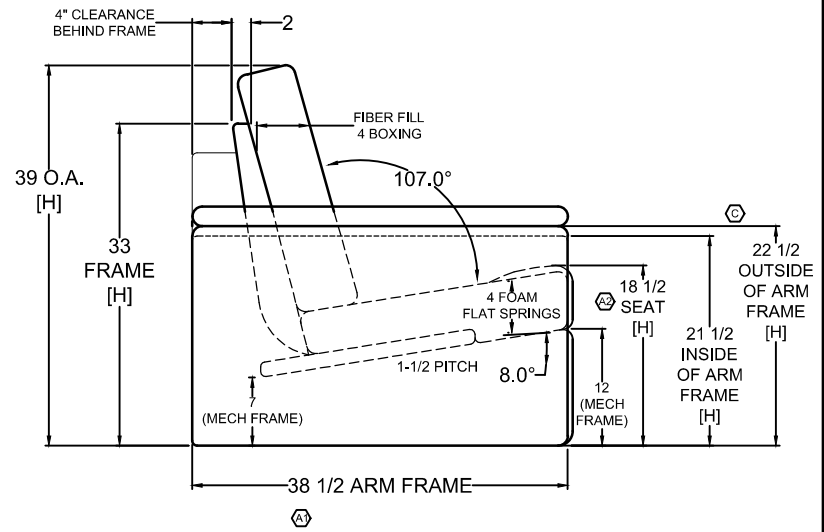
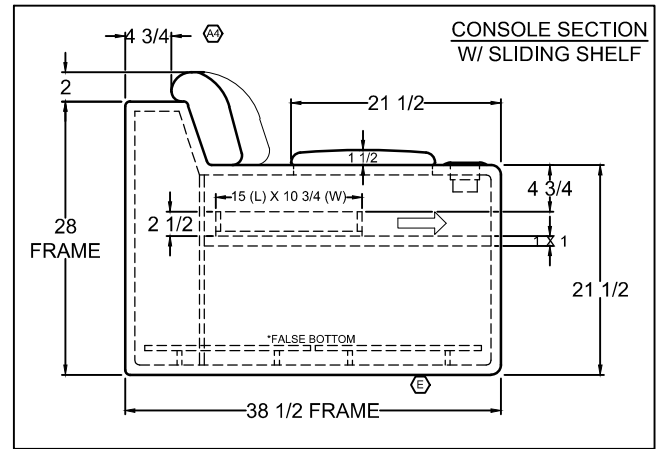


CUT PATTERN	
BACK FRAME NO.	
BASE FRAME NO.	
WOOD PATTERN	



JA	F	ADD 10-1/2" WOOD KICK PANEL DIMENSION TO DRAWING. (REF. ECO #002-2021)	02.09.21
JA	E	ADD FALSE BOTTOM TO MIDDLE CONSOLE. (REF. ECO #018-2019)	07.26.19
JA	D	DRAWING UPDATE: CHANGE DESCRIPTION ON PILLOW TOP ARM TO BASEBALL STITCH; WAS TOP STITCH.	05.09.19
JA	C	WOOD UPDATE: ADDED INSIDE AND OUTSIDE ARM FRAME HEIGHTS. 21-1/2" INSIDE AND 22-1/2" OUTSIDE.	02.01.19
JA	B	METAL UPDATE: [1] CHANGE TO BOLT TABS & ADD DIMENSIONS WOOD UPDATE: [2] CHANGE CONSOLE FRAME WIDTH TO 15"; WAS 15-1/4".	01.31.19
JA	A	PRODUCTION UPDATE: [1] REMOVED O.A. DEPTH AND CHANGED O.A. DEPTH TO 38-1/2"; WAS 38". [2] CHANGED SEAT HEIGHT TO 18-1/2"; WAS 18". [3] ADDED 74" METAL BASE FRAME WIDTH DIMENSION TO DRAWING. [4] ADDED BACK FRAME AND PILLOW TO CENTER CONSOLE.	01.16.19

REVISIONS

**VILLA INTERNATIONAL**  
13760 Midway St.  
Cerritos, CA 90703  
Tel 562-404-8111  
Fax 562-404-7781

TITLE  
**2020 LADP**  
87" HOME THEATER  
W/ DUAL POWER RECLINE

DWG. NO.  
**VI7000394**

REV.  
**F**

APV  
--

DR  
**J.ANCHETA**

DATE  
**01.03.19**

THIS DRAWING IS THE PROPERTY OF VILLA INTERNATIONAL MFG. ALL RIGHTS RESERVED.

SCALE 1:1  
DO NOT SCALE  
DRAWING.  
UNLESS OTHERWISE  
SPECIFIED DIMENSIONS  
ARE IN INCHES.