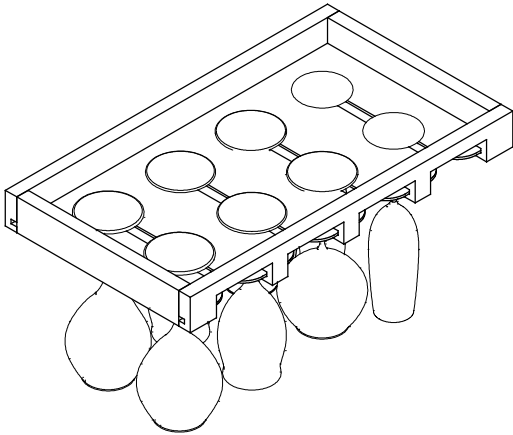
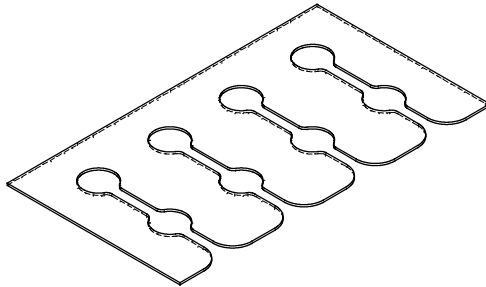


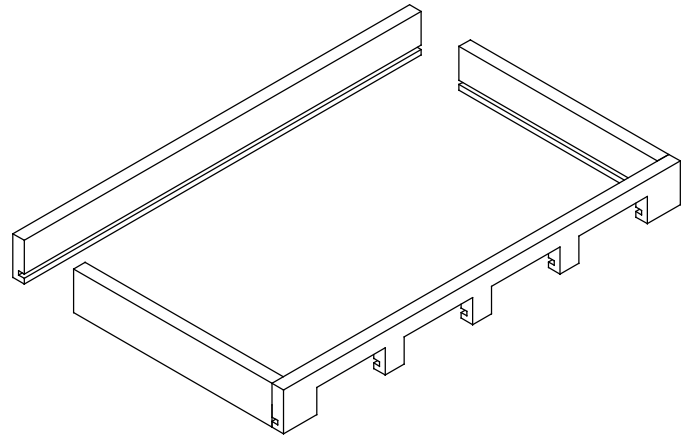
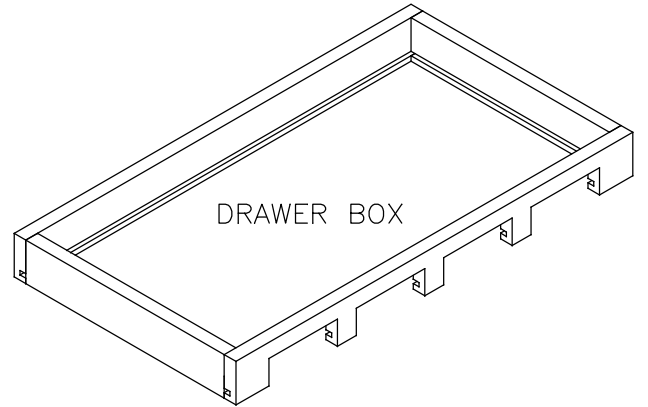
ITEM #	QTY	NEWMAR #	DESCRIPTION
1	1	162054	STEMWARE RACK 23EXDP (SET)
2	1	162055	DRAWER OHC 2X21.5X12 MPL



ASSEMBLY VIEW



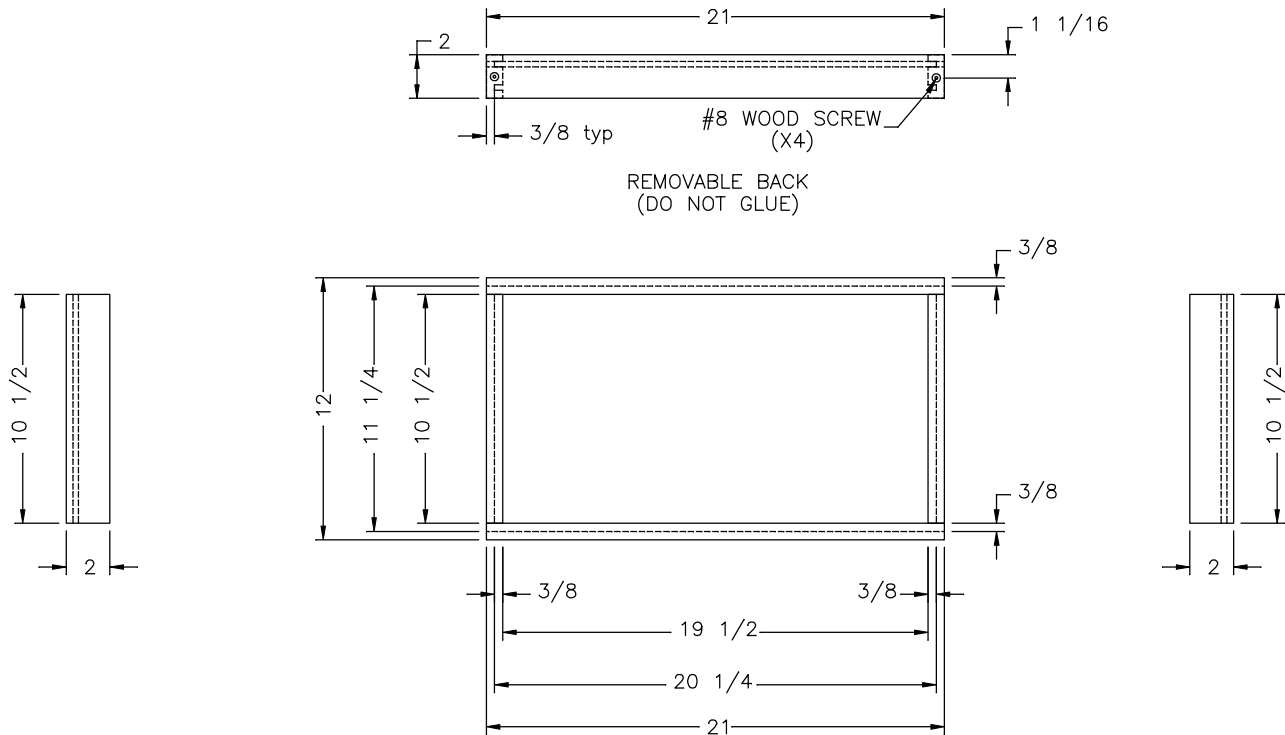
ACRYLIC BOTTOM PANEL FOR  
STEMWARE RACK



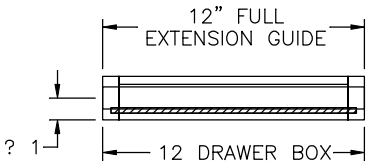
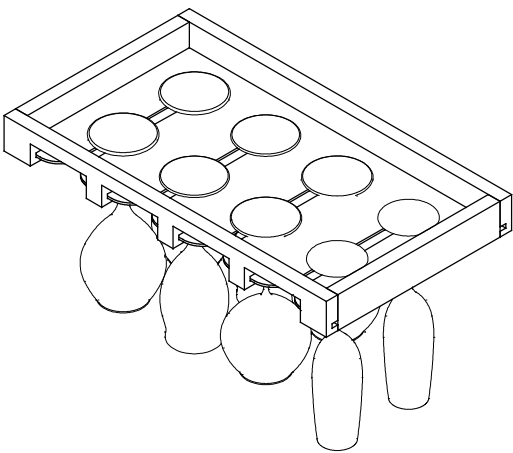
NOTES;  
 1; MATERIAL; PANELS; CLEAR ACRILIC  
 2; SEE SHEET 2 AND 3 FOR PART DETAILS

<b>NEWMAR CORP</b> P.O. Box 30, Nappanee, IN. 46550  UNITS: INCHES TITLE BLOCK: 1-5TB	Model:	(J085)	Sheet	Drawn by:	Checked by:	Revision:	By:
		EXDP 4595	1 OF 3	T. S.	B. B.	OF DRAWER BOX AND STEMWARE RACK SHRUNK BY 1/4" (PCR #231575)	S. H.
	Title:	WINE GLASS DRAWER	I.D. # 2023\	Date:	Date:	Revision: NEW PRINT CREATED	By:
		STEMWARE RACK - ACRYLIC	HE\CAB\MISC\	1/4/22	1/5/22		T. S.
			MISC7008				Date:BB 1/5/22

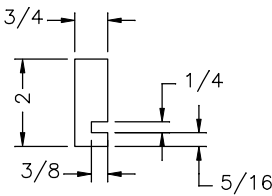
ITEM #	QTY	NEWMAR #	DESCRIPTION
2	1	162055	DRAWER OHC 2X21.5X12 MPL



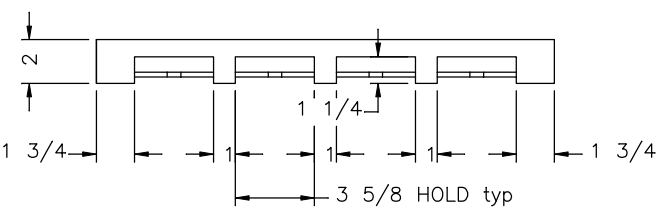
ASSEMBLY VIEWS



PULL-OUT RACK



TYPICAL PROFILE  
SCALE X2



VIEW FROM FRONT

<b>NEWMAR CORP</b> P.O. Box 30, Nappanee, IN. 46550  UNITS: INCHES TITLE BLOCK: 1-5TB	Model: (J085)	Sheet	Drawn by:	Checked by:	Revision: DUE TO STILES ON CABINET CHANGIN FROM 1-3/4 TO 2", EACH SIDE	By: S. H.
	EXDP 4595	3 OF 3	T. S.	B. B.	OF DRAWER BOX AND STEMWARE RACK SHRUNK BY 1/4" (PCR #231575)	Date:BB 4/7/22
	Title: WINE GLASS DRAWER	I.D. # 2023\	Date:	Date:	Revision: NEW PRINT CREATED	By: T. S.
	STEMWARE RACK - ACRYLIC	HE\CAB\MISC\	1/4/22	1/5/22		Date:BB 1/5/22