

4

3

2

1

CUT PATTERN	
BACK FRAME NO.	
BASE FRAME NO.	
WOOD PATTERN	

DUAL SIZE CUP HOLDERS

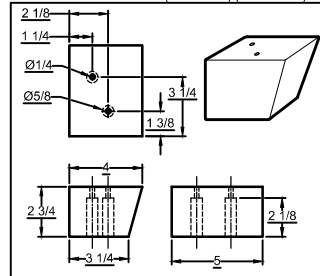
TOP STITCH

PULL

TOP STITCH

TOP STITCH

\*WOODEN FOOT DETAIL (RAF SIDE) (2:1 SCALE)

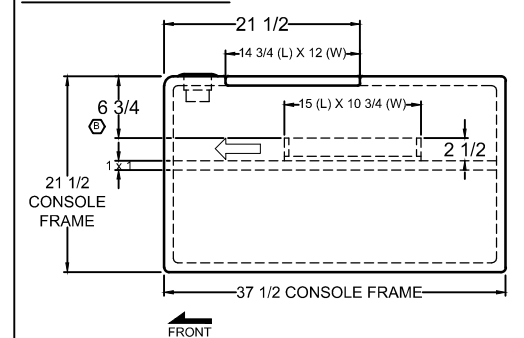


USB SWITCH

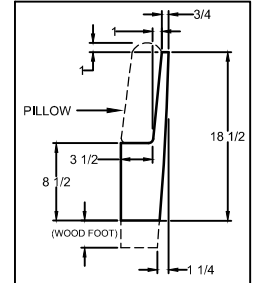
WOOD FOOT

\*WOODEN FOOT WILL BE INSTALLED BY CUSTOMER

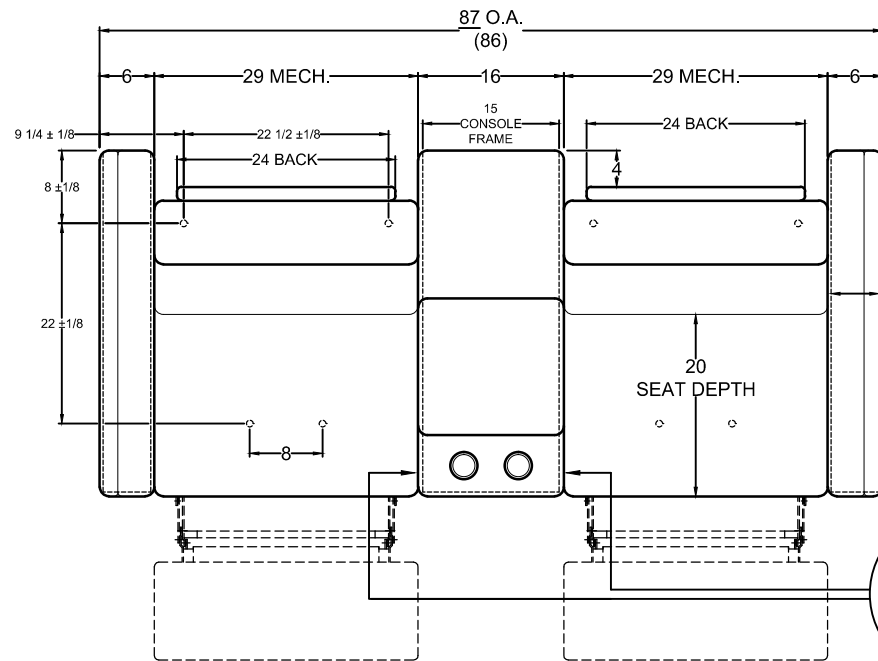
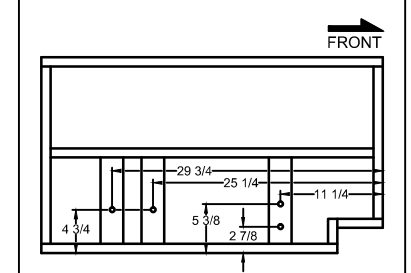
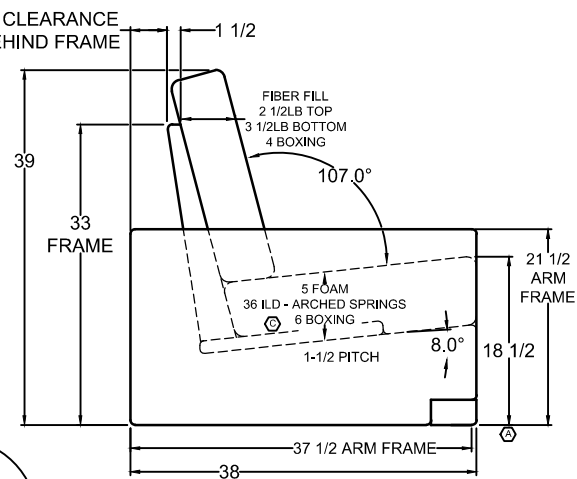
CENTER CONSOLE DETAIL



\*FRONT OF RAF ARM FRAME DETAIL



\*T-NUT LOCATIONS ON WOOD ARM FRAME.  
(RAF ARM BELOW)

4" CLEARANCE  
BEHIND FRAMESWITCH  
W/ USB  
(ROUND)

JA	E	PER RL, ADD T-NUT LOCATIONS ON WOOD ARM FRAME.	11.22.24
JA	D	PER SR, REMOVE BLIND STITCH FROM OUTSIDE OF ARMS.	09.13.24
JA	C	PER RL, [1] CHANGE SEAT BOXING TO 6"; WAS 5".	04.11.24
JA	B	PER RL, CORRECT CONSOLE SHELF HEIGHT TO 6-3/4"; WAS 4-3/4".	02.21.24
JA	A	CHANGE SEAT HEIGHT TO 18-1/2"; WAS 19". (REF. ORD. #0179528)	01.24.24

REVISIONS

**COMFORTFIT**  
BY VILLA INTERNATIONAL

13760 MIDWAY STREET  
CERRITOS CA 90703  
(562) 404-8111  
FAX (562) 404-7781

TITLE  
**2023 DSDP**  
**87" HOME THEATER**

DWG. NO.  
**CF7000696**  
REV. **E**  
APV  
**FTBM**  
DATE  
**01.17.24**  
DR  
**J.ANCHETA**

01.25.24

SCALE 1:1  
DO NOT SCALE  
DRAWING.  
UNLESS OTHERWISE  
SPECIFIED DIMENSIONS  
ARE IN INCHES.

THIS DRAWING IS THE PROPERTY OF VILLA INTERNATIONAL MFG. ALL RIGHTS RESERVED.