

The "Going" is Great!

1973
Kountry Aire

TRAVEL TRAILERS
and 5th WHEELS



NEWMAR INDUSTRIES INC.



Kountry Aire

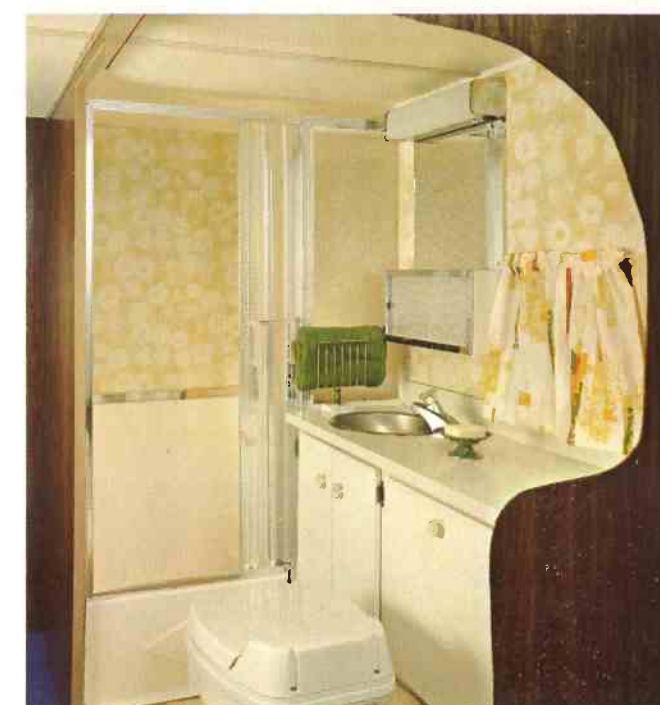
INDIVIDUALITY . . . Your choice of Twin or Double Beds — Rear or Center Bath — Gold, Green, Blue or Red Interiors — Linoleum or Carpeted Floors.

Kountry Aire

STYLE The styling means a lot in the design of a Kountry Aire Travel Trailer which is well balanced, making it easier for towing and living. The interior has many flowing colors to choose from, making it possible to have a beautiful interior. The interior has a selection of long lasting fabrics, prefinished paneling and high quality appliances.



You're Riding On Our Reputation And You Can Bank On It.



The "Going" is Great! With A

Kountry Aire

22' MODELS

6 cu. ft. gas-electric refrigerator, 22,000 BTU heater, 4 burner range with bi-fold lid, glass oven door, 6 gallon gas water heater, 30 gallon pressure water tank with air compressor, shower, lavatory, marine stool with holding tank, 80 amp battery with case and 12 volt converter, .030 metal, carpeting, 8 ply rated tires, tandem axles, 12" brakes, shocks, double sink, reinforced A frame, 30 lb. gas bottles, automatic changeover regulator.

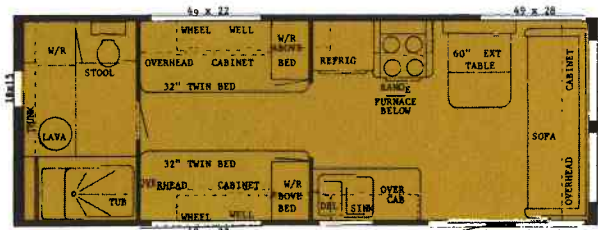


31' CENTER BATH

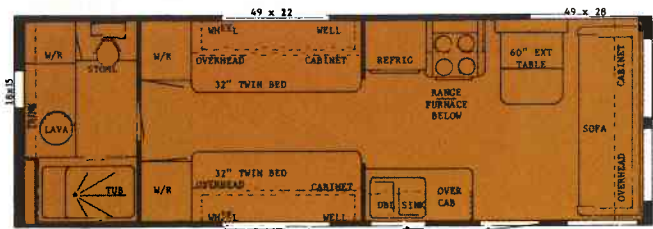
25' MODELS - CENTER BATH & REAR BATH

27' MODELS - CENTER BATH & REAR BATH

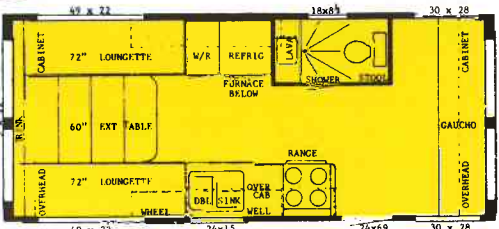
6 cu. ft. gas-electric refrigerator, 22,000 BTU heater, 4 burner range with glass oven door, 8 gallon gas-electric water heater, 30 gallon pressure water tank with air compressor, shower, lavatory, marine stool with holding tank, carpeting, 80 amp battery with case and 12 volt converter, .030 metal, 12 volt power fan in bath, 8 ply rated tires, tandem axles, 12" brakes, shocks, double sink, reinforced A frame, 30 lb. gas bottles, automatic change-over regulator.



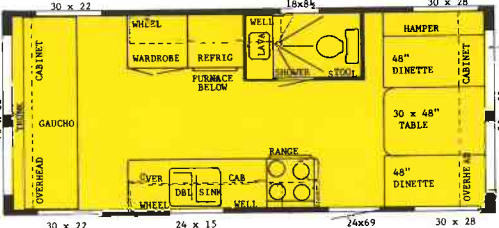
25 REAR BATH



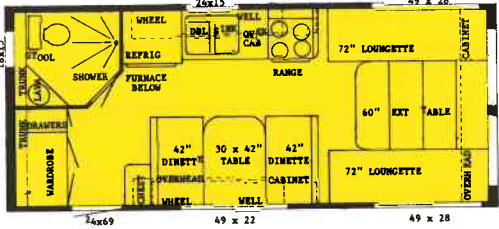
27 REAR BATH



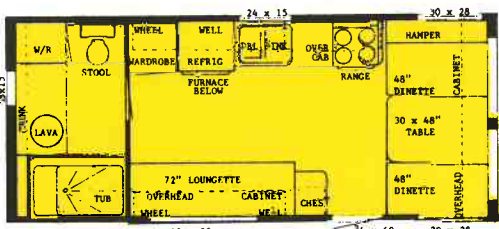
22 TWIN LOUNGETTE



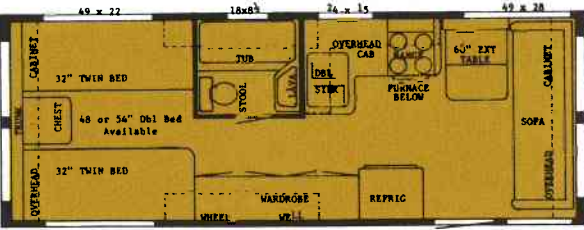
22 SIDE BATH



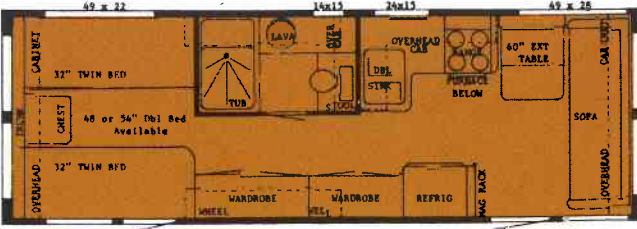
22 REAR BATH REAR DOOR



22 REAR BATH FRONT DOOR



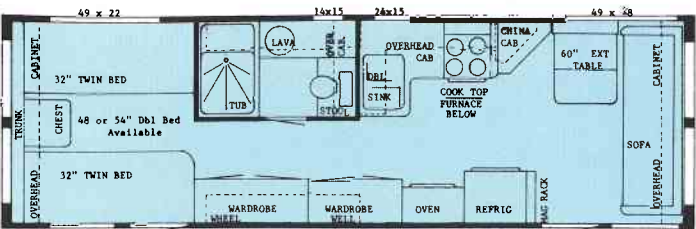
25 CENTER BATH



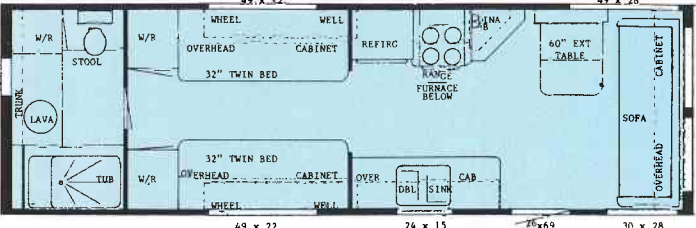
27 CENTER BATH

FLOOR PLANS WITH THE TRAVELER IN MIND

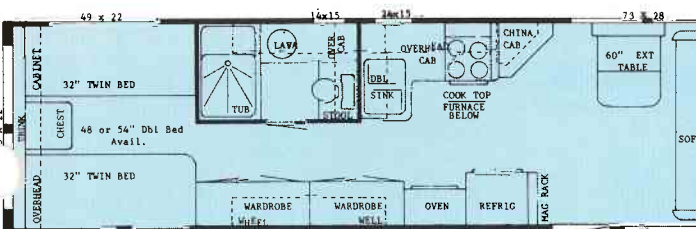
17 Floor Plans From Which To Choose.
All With Plenty Of Storage Space.
All Units Self-Contained.



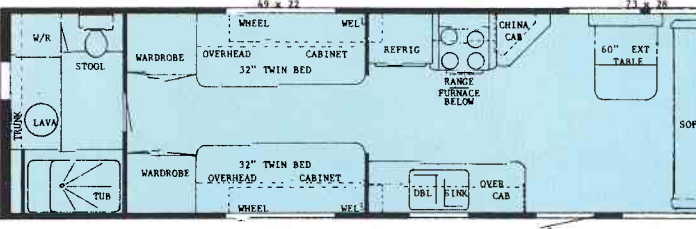
29 CENTER BATH



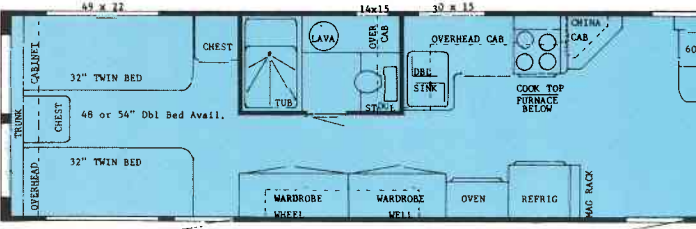
29 REAR BATH



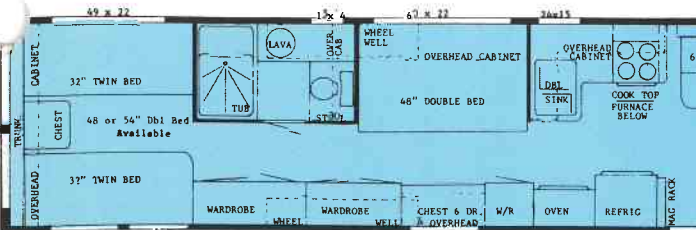
31 CENTER BATH



31 REAR BATH



35 CENTER BATH - 1 BEDROOM



35 CENTER BATH - 2 BEDROOM



31' CENTER BATH

29' MODELS 31' MODELS

6 cu. ft. gas-electric refrigerator, 32,000 BTU heater 4 burner range with wall mounted oven, glass oven door, 8 gallon gas-electric water heater, 30 gallon pressure water tank with air compressor, shower, lavatory, marine stool with holding tank, carpeting, 80 amp battery with case and 12 volt converter, .030 metal, 12 volt power fan in bath, 8 ply rated tires, tandem axles, 12" brakes, shocks, double sink, reinforced A frame, 30 lb. gas bottles, automatic changeover regulator.

35' MODELS — 1 BEDROOM 35' MODELS — 2 BEDROOMS

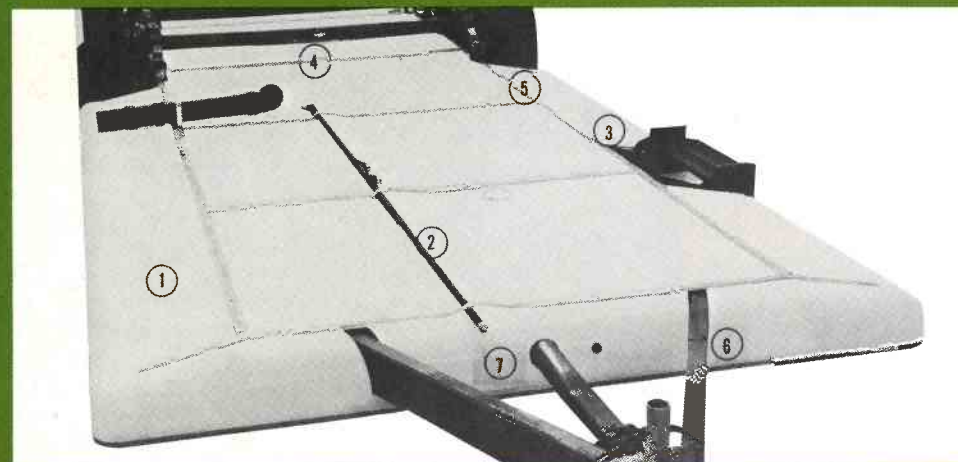
6 cu. ft. gas-electric refrigerator, 32,000 BTU heater, 4 burner range with wall mounted oven, glass oven door, 8 gallon gas-electric water heater, 30 gallon pressure water tank with air compressor, shower, lavatory, marine stool with holding tank, carpeting, 80 amp battery with case and 12 volt converter, .030 metal, 12 volt power fan in bath, 8 ply rated tires, tandem axles, 12" brakes, shocks, double sink, reinforced A frame, 30 lb. gas bottles, automatic changeover regulator.

Prices and specifications subject to change without notice. All prices F.O.B. Nappanee, Indiana.

Kountry Aire

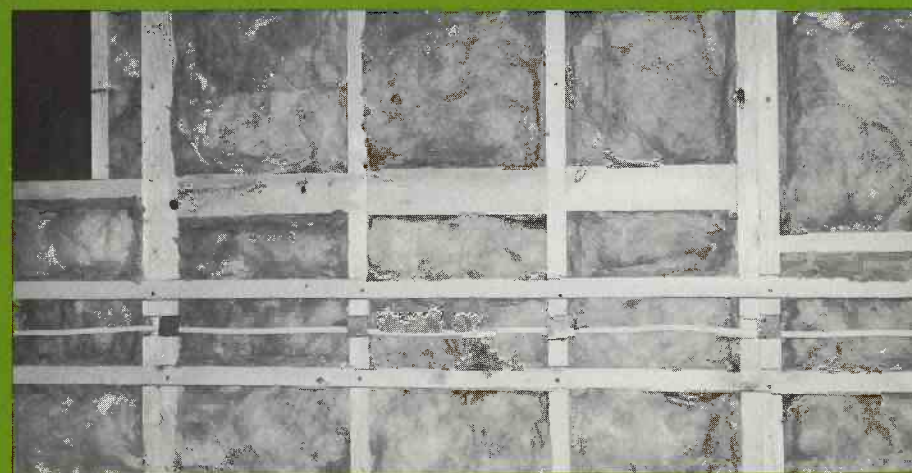
ENGINEERING & CONSTRUCTION

A. 1. 80 amp. Battery; 2. 30 amp. Converter; 3. 12 v. Light; 4. Back-up Lights (2); 5. Breaker-Box; 6. Lead-in Cord; 7. Combination Chrome Rear Bumper & Hose Carrier; 8. Safety-glass awning windows; 9. .030 Prefinished Aluminum Exterior.



B. 1. Underside .030 Prefinished Aluminum with 1½" spun fiberglass insulation with vapor barrier board; 2. ½" Black-pipe Gas Line to your appliances; 3. Foldaway Steel Door Step; 4. Tandem Axle with 5000 lb. Hub group per axle; Heavy-duty Leaf-spring suspension with centerload equalizer; 5. Heavy-duty 15" wheels with high capacity, heavy duty shocks and 12" electric brake systems; 700 x 15 8-ply rated white sidewall Tires; 6. Heavy-duty 2 5/16" Coupler and Jack, 6" electrically welded seamless tubular frame; 7. Heavy-duty reinforced 3rd member A-Frame.

C. Sidewalls formed in single unit; all walls and floor of 2 x 2 construction on 16" centers with reinforced screwed belt rails; 2 x 4 rafters with 5/8" plywood center construction; 1½" Fiberglass Insulation in floor and walls, 3" in ceiling; All-weather board in roof and floor; Floor is glued and screwed at all points.



Specifications

EXTERIOR

.030 Prefinished Exterior Aluminum — Gold Anodized Insert — Engineer designed caps and radius corners — Fully covered heavy aluminum under chassis (trailers only) — Roof seams fully coated — Wheelwells fully insulated — Storage trunk with light — Various models pre-wired for maximum equipment including air conditioning — Fold-away steel door step — Wheel Covers — Awning rail — Safety glass in all windows — Snap in exterior trim — ICC Cluster and side running lights — Four large tail lights — Two stop lights — two back up lights.

INTERIOR

Beautiful vinyl decorator finished paneling for easy care — Telephone-type shower with shutoff — Ample wardrobe and drawer storage space — Convenient overhead cabinets with shelves — Heavy-duty folding doors — Folding chairs in 25 ft. through 35 ft. models — Mirror in kitchen — Molded fibreglass tub or shower — Medicine cabinet with mirror — Stainless steel lavatory in bath with mixing faucet — Built in laundry hamper (var. models) — Full length screen doors on all doors — Forced air heating system — Indirect lighting in living room — Removable window screens — 6 cubic foot combination gas & electric refrigerator with freezer compartment standard, (7½ cu. ft. model optional) — Double stainless steel sink with mixing faucets — 4 burner plate range and oven with see-through glass door — Folding cover on plate range — Twin or double innerspring mattress.

CHASSIS & RUNNING GEAR

6 inch electrically welded seamless tubular frame — Heavy duty reinforced 3rd member A-Frame — Heavy duty 2 5/16 coupler and jack — Combination chrome rear bumper and hose carrier — Heavy duty leaf springs suspension with center load equalizer — Tandem axle on all Kountry-Aire models — 5000 pound hub group per axle — Heavy duty 15 inch wheels — Heavy duty high capacity shocks on all wheels — 12 inch electric brake systems — 700 x 15 - 8 ply rated tires.

BODY CONSTRUCTION

All walls and floor of 2 x 2 construction on 16 inch centers with reinforced belt rails — 2 x 4 rafters with 5/8 plywood center construction — 1½ inch fibreglass insulation in floor and walls — 3 inch fibreglass insulation in ceiling — Vinyl decorator finished plywood — All weather board in roof and floor — Floor is glued and screwed at all points.

ELECTRICAL, PLUMBING AND HEATING

110 volt and 12 volt lighting system with converter in all Kountry-Aire models — Heavy duty battery and locking case — Readily accessible power service breaker panel — Weatherproof exterior single patio outlet — Indirect lighting in living room — TV lead-in jack — All grounded convenience outlets and switches — 25 foot 110 volt power supply cord — Two 30 pound L.P. gas tanks and automatic changeover regulator — High capacity heating system with blower — Forced air above floor ducting system with adjustable registers — 30 gallon water pressure system with air compressor — 8 gallon gas and electric water heater in 25 ft. through 35 ft. models — 6 gallon water heater in 22 ft. models — All copper lines inside on hot and cold water system — Non-corrosive approved plastic drain and sewage plumbing — Trapped and ventilated plumbing system — Marine gravity-type toilet with holding tank.



TIP-OUTS AVAILABLE IN 35' MODELS ONLY

1 or 2 TIP-OUTS, 1 - BEDROOM ONLY



Prices and specifications subject to change without notice. All prices F.O.B. Nappanee, Indiana.

The "Going" is Great!

Kountry Aire FIFTH WHEEL



KOUNTRY - AIRE FIFTH WHEELS are available in 4 sizes and 8 models. Easy maneuverability & towability are real assets. The radius corners make this unit less wind resistant and add beauty to it.

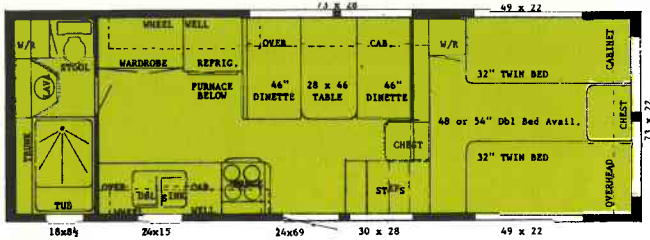


The "Going" is Great!
With A

Kountry Aire
FIFTH WHEEL

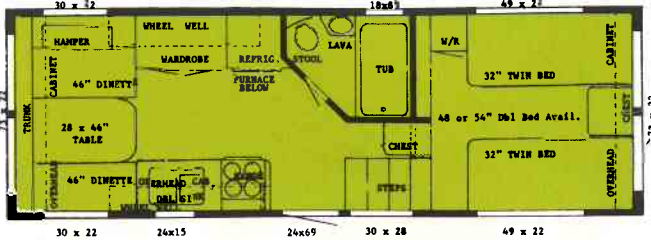
25' REAR BATH

6 cu. ft. gas-electric refrigerator, 22,000 BTU heater, 4 burner range with bi-fold lid, glass oven door, 6 gal. gas water heater, 30 gal. pressure water tank with air compressor, shower, lavatory, marine stool with holding tank, 80 amp battery with case and 12 volt converter, .030 metal, carpeting, 8 ply rated tires, tandem axles, 12" brakes, shocks, double sink, 30 lb. gas bottles, automatic changeover regulator.



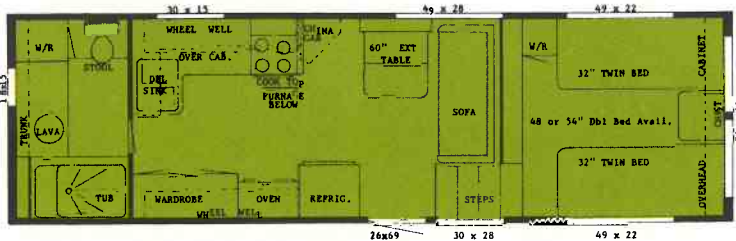
25' FRONT BATH

6 cu. ft. gas-electric refrigerator, 22,000 BTU heater, 4 burner range with bi-fold lid, glass oven door, 6 gal. gas water heater, 30 gal. pressure water tank with air compressor, tub, lavatory, marine stool with holding tank, 80 amp battery with case and 12 volt converter, .030 metal, carpeting, 8 ply rated tires, tandem axles, 12" brakes, shocks, double sink, 30 lb. gas bottles, automatic changeover regulator.



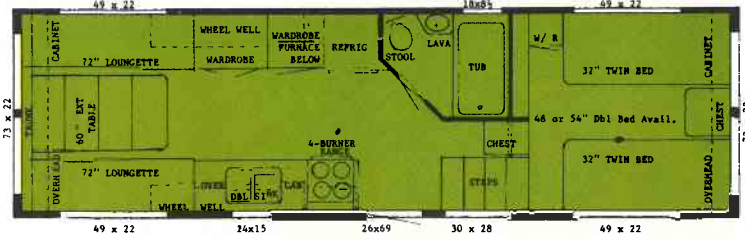
28' REAR BATH

6 cu. ft. gas-electric refrigerator, 32,000 BTU heater, 4 burner range with wall mounted oven, glass oven door, 8 gal. gas-electric water heater, 30 gal. pressure tank with air compressor, shower, lavatory, marine stool with holding tank, carpeting, 80 amp battery with case and 12 volt converter, .030 metal, 12 volt power fan in bath, 8 ply rated tires, tandem axles, 12" brakes, shocks, double sink, 30 lb. gas bottles, automatic changeover regulator.



28' FRONT BATH

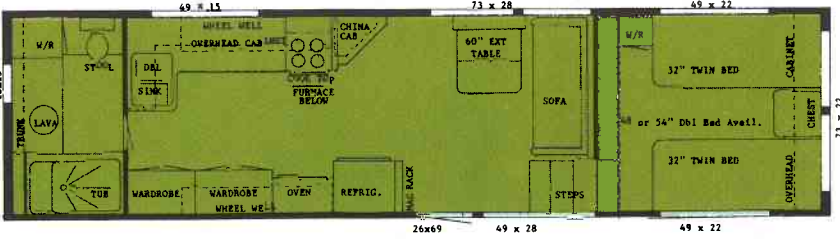
6 cu. ft. gas-electric refrigerator, 32,000 BTU heater, 4 burner range, glass oven door, 8 gal. gas-electric water heater, 30 gal. pressure water tank with air compressor, shower, lavatory, marine stool with holding tank, carpeting, 80 amp battery with case and 12 volt converter, .030 metal, 12 volt power fan in bath, 8 ply rated tires, tandem axles, 12" brakes, shocks, double sink, 30 lb. gas bottles, automatic changeover regulator.



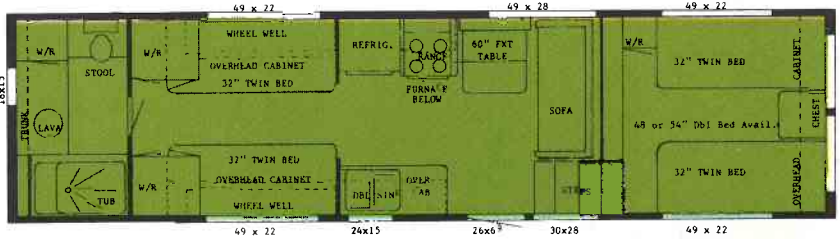
FLOOR PLANS WITH THE TRAVELER IN MIND

32' REAR BATH

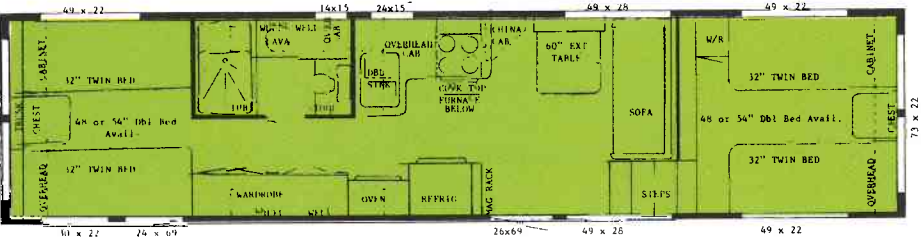
6 cu. ft. gas-electric refrigerator, 32,000 BTU heater, 4 burner range with wall mounted oven, glass oven door, 8 gal. gas-electric water heater, 30 gal. pressure water tank with air compressor, tub, lavatory, marine stool with holding tank, carpeting, 80 amp battery with case and 12 volt converter, .030 metal, 12 volt power fan in bath, 8 ply rated tires, tandem axles, 12" brakes, shocks, double sink, 30 lb. gas bottles, automatic changeover regulator.



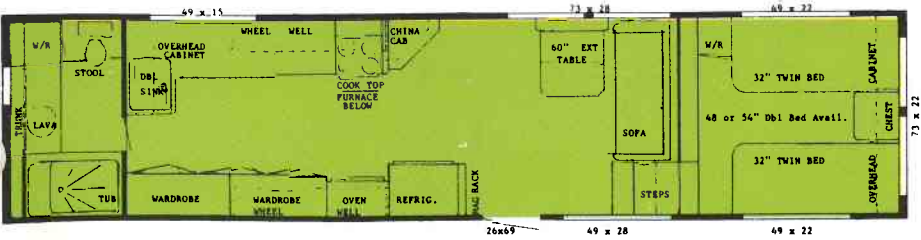
32' TWO BEDROOM



35' CENTER BATH



35' REAR BATH



6 cu. ft. gas-electric refrigerator, 32,000 BTU heater, 4 burner range with wall mounted oven, glass oven door, 8 gallon gas-electric water heater, 30 gal. pressure tank with air compressor, tub, lavatory, marine stool with holding tank, carpeting, 80 amp battery with case and 12 volt converter, .030 metal, 12 volt power fan in bath, 8 ply rated tires, tandem axles, 12" brakes, shocks, double sink, 30 lb. gas bottles, automatic changeover regulator.

The "Going" is Great!

Kountry Aire



You're Riding On Our Reputation

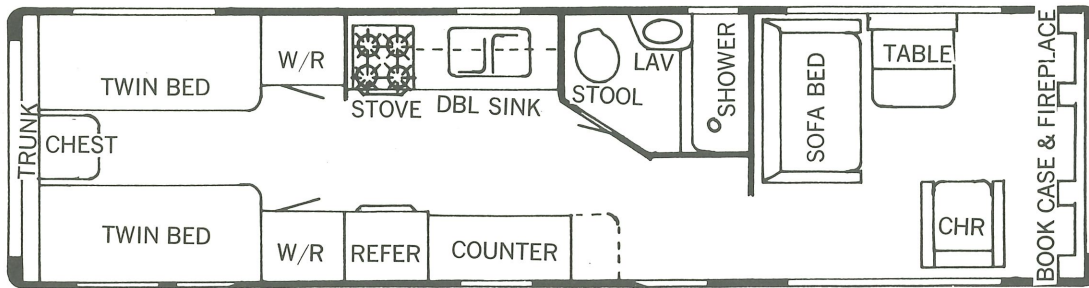
And You Can Bank On It.

NEWMAR INDUSTRIES, INC.
P.O. Box 30 Nappanee, Ind. 46550
Phone 219 773-7791

Prices and specifications subject to change without notice. All prices F.O.B. Nappanee, Indiana.



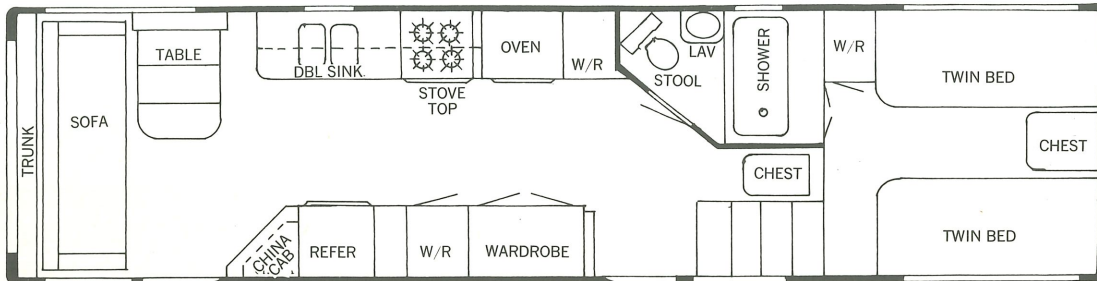
Kountry Aire NEW MODELS



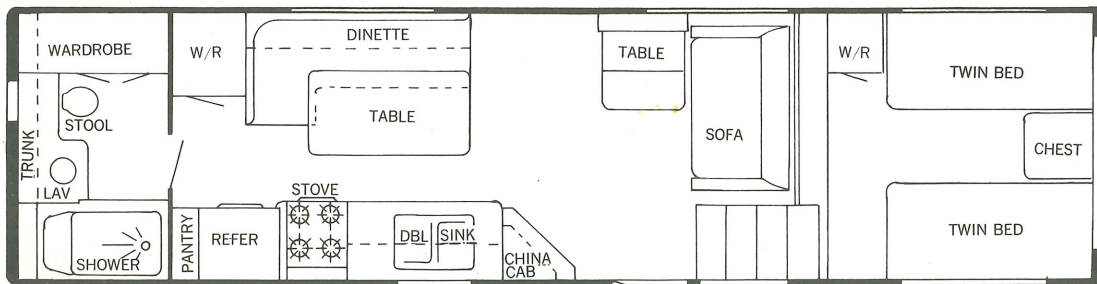
Fireplace, Optional
125.00 Retail

Sliding Glass Door,
Optional
150.00 Retail

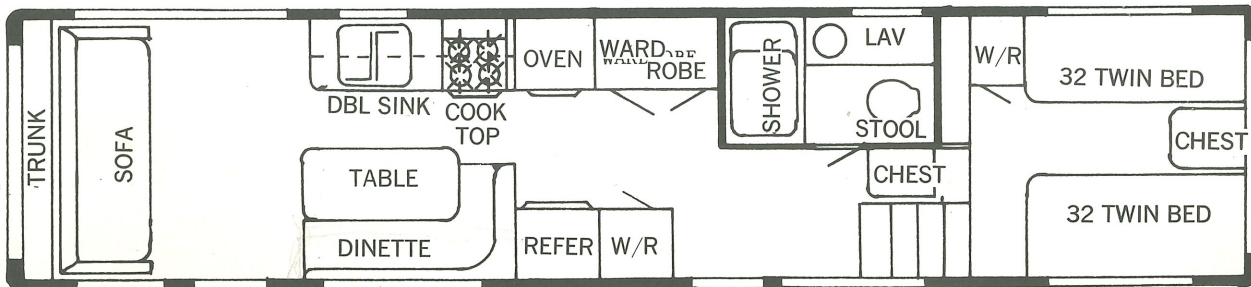
35' FRONT LIVING ROOM SELF CONTAINED OR PARK MODEL



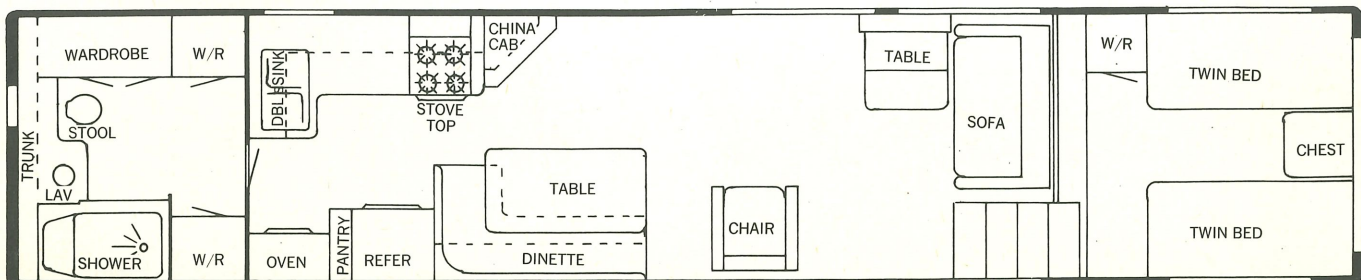
32' 5th WHEEL, FRONT BATH



32' 5th WHEEL, REAR BATH, SIDE DINETTE Dinette is Optional 150.00 Retail



35' 5th WHEEL, FRONT BATH, REAR DINETTE Dinette is Optional 150.00 Retail



40' 5th WHEEL ALL NEW FROM KOUNTRY AIRE

This unit manufactured for states where
40' 5th Wheels are legal.