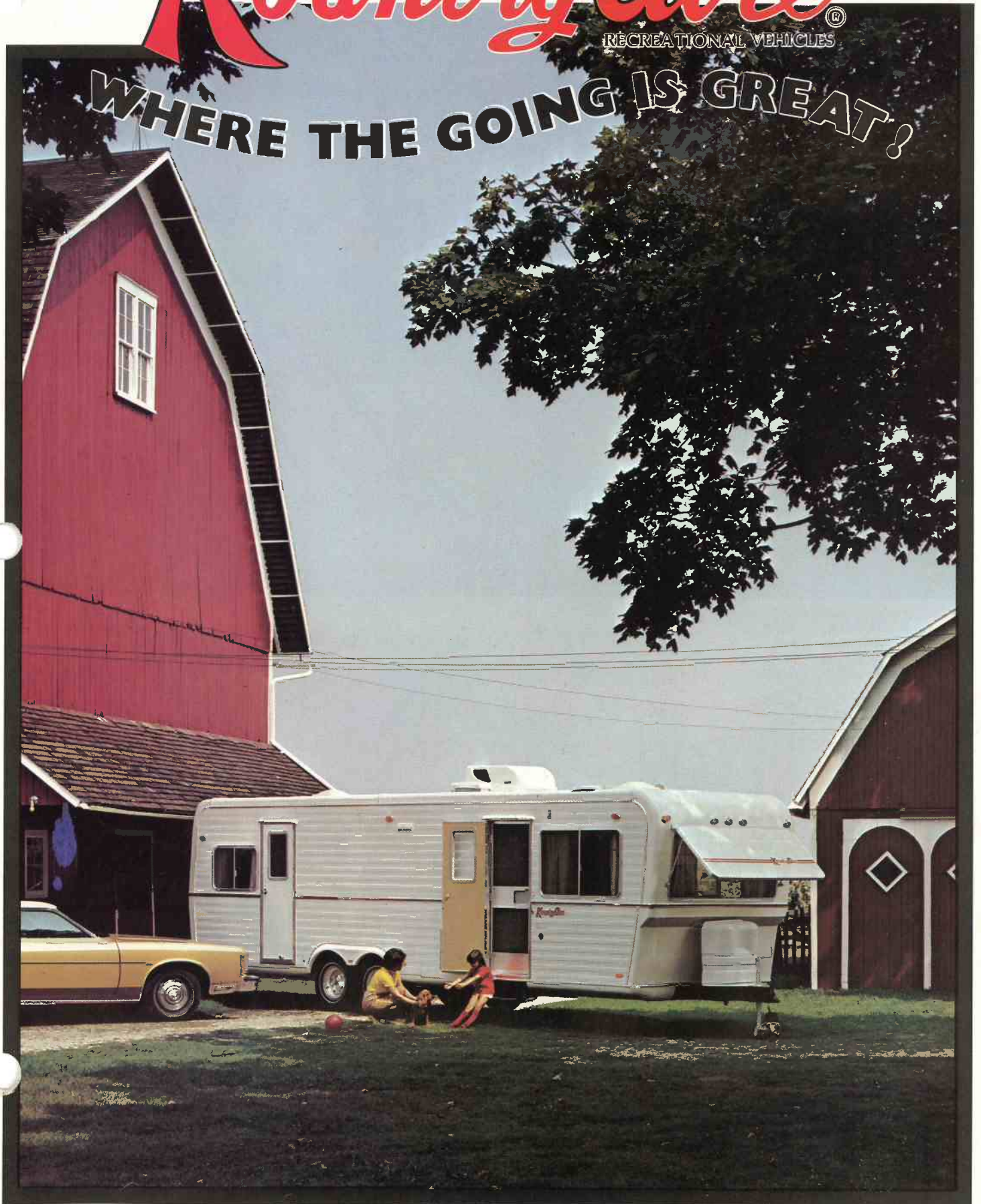


1974

Kountry Aire[®]

RECREATIONAL VEHICLES

WHERE THE GOING IS GREAT!



The 29' Kountry Aire Executive

Kountry Aire Fifth Wheels

Hook up the Kountry Aire Fifth Wheel and you're ready to hit the road in comfort and style. Self-contained, the fifth wheels are easy to tow and maneuver. Radius corners cut down on wind resistance and, on the inside, there's all the convenience you'd want in your home on the road.

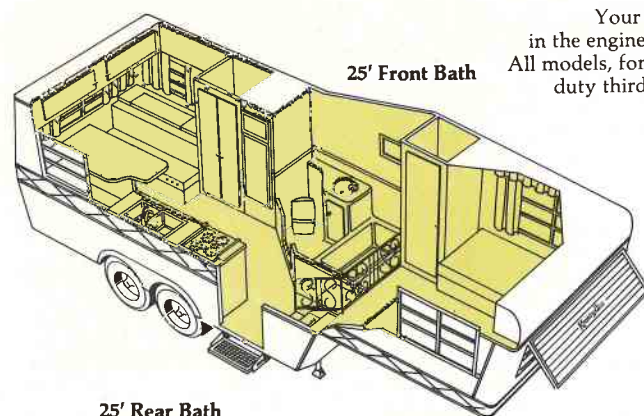
Kountry Aire fifth wheels offer the same features, accessories and furnishings as the travel trailers. Fifth wheel recreational vehicles by Kountry Aire are another way to make your going great. The 29' front bath with rear dinette is shown here.



Living areas in the fifth wheels are all decorator design coordinated and feature fine fabrics, pleated draperies and rich carpeting. The wrought iron railing adds an elegant decorator's touch to the stairs leading to the upper bedroom.



The rear area of this fifth wheel is an attractive dinette during the daytime and easily converts to a double bed for sleeping. The double stainless steel sink and four-burner range with vent hood are representative of the contemporary features throughout all Kountry Aires.

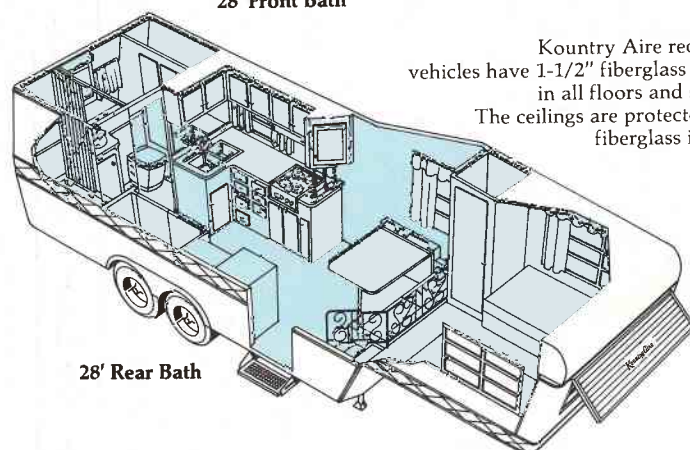


25' Front Bath

Your safety has been assured in the engineering of Kountry Aires. All models, for example, have a heavy duty third reinforcement member to the axle.

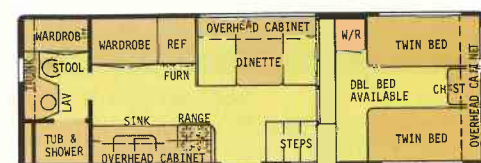


28' Front Bath

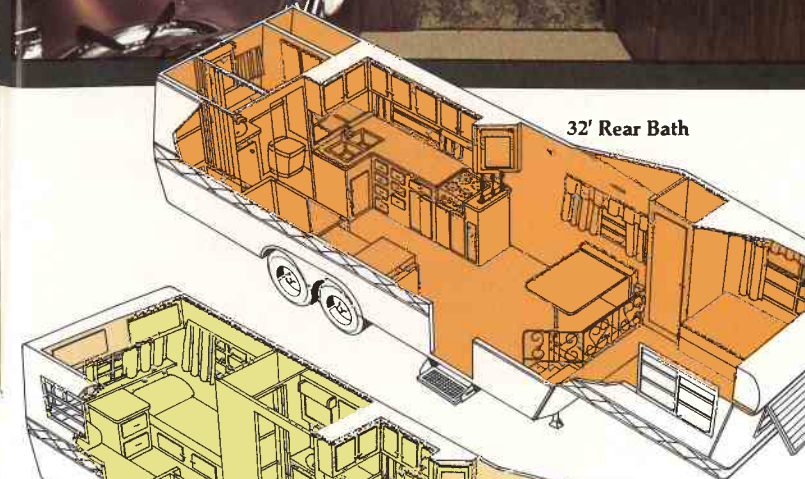


28' Rear Bath

Kountry Aire recreational vehicles have 1-1/2" fiberglass insulation in all floors and sidewalls. The ceilings are protected with 3" fiberglass insulation.



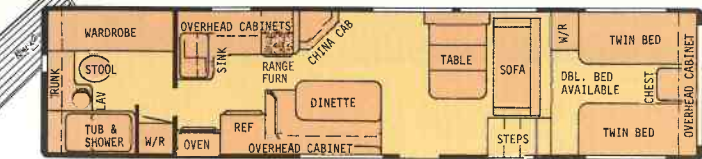
25' Rear Bath



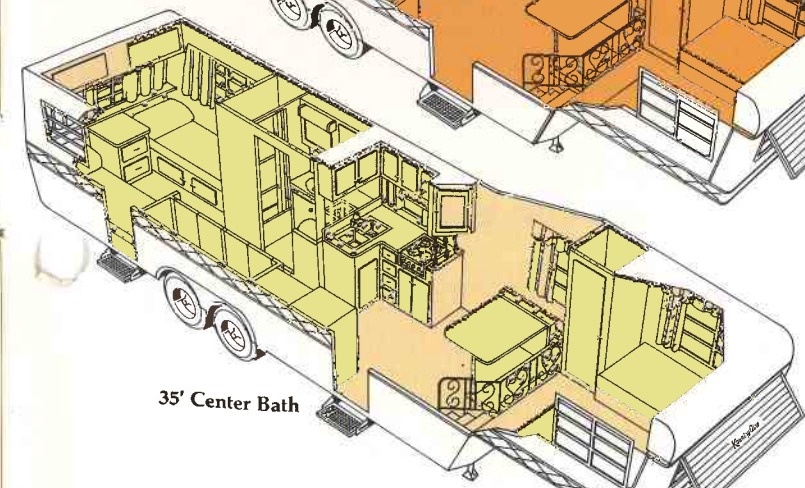
32' Rear Bath



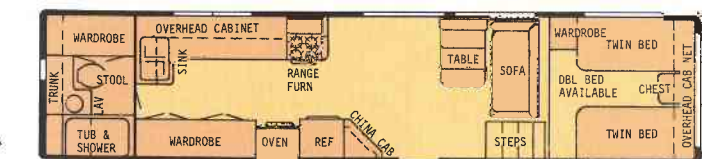
35' Front Bath



35' President



35' Center Bath



35' Rear Bath

All about the *Kountry Aire* GENERAL SPECIFICATIONS AND FEATURES

Exterior

.030 prefinished aluminum with gold anodized insert. Engineer-designed caps and radius corners. Fully covered heavy aluminum under chassis (trailers only). Fully coated roof seams. Insulated wheelwells. Storage trunk with light. Some models pre-wired for air conditioning. Fold-away steel door steps. Wheel covers. Awning rail. Safety glass. Snap-in exterior trim. ICC cluster and side running lights. Four large tail lights. Two stop lights. Two back-up lights.

Interior

Easy-care vinyl finished paneling. Telephone-type shower with shutoff. Ample wardrobe and drawer storage. Overhead cabinets with shelves. Heavy-duty folding doors. Folding chairs (in 27 ft. through 35 ft. models). Kitchen mirror. Molded fiberglass tub or shower. Medicine cabinet with mirror. Stainless steel bath lavatory. Built-in hamper (some models). Full length screen doors. Forced air heating system. Indirect lighting in living room. Removable window screens. 6 cu. ft. gas and electric refrigerator with freezer compartment (7-1/2 cu. ft. model optional). Double stainless steel sink. 4-burner range with folding cover and oven. Eye-level oven in 29 ft. and larger trailers. Wall-mounted oven standard in some fifth wheel models. Twin or double innerspring mattress.

Chassis and Running Gear

6" welded, seamless tubular frame. Reinforced third member A-frame. Heavy duty 2-5/16 coupler and jack. Chrome rear bumper and hose carrier. Leaf springs suspension with center load equalizer. Tandem axle (all models). 5000 pound hub group per axle. Heavy duty 15" wheels. High capacity shocks on all wheels. 12" electric brake systems. 700 x 15, 8-ply rated tires.

Body Construction

2 x 2 walls and floors on 16" centers with reinforced belt rails. 2 x 4 rafters with 5/8" plywood center. 1-1/2" fiberglass floor and wall insulation. 3" fiberglass ceiling insulation. Vinyl finished plywood. All-weather roof and floor board. Floor and sidewalls glued at all points.

Electrical, Plumbing and Heating

110 volt and 12 volt lighting system with converter. Heavy duty battery with locking case. Accessible power breaker panel. Television lead-in jack. All grounded outlets and switches. 25 ft., 110 volt power supply cord. 12 volt power fan (except 22' models).

Two 30 pound L.P. gas tanks and automatic changeover regulator. Forced air heating with blower and above-floor ducting system. 22,000 BTU furnace in 22', 25', 27'. 32,000 BTU furnace in 29', 31', 35'. 30 gallon water pressure system with air compressor. 8 gallon gas and electric water heater (27 ft. through 35 ft. models). 6 gallon water heater (22 ft. models). Inside copper lines on hot and cold water system. Non-corrosive plastic drain and sewage plumbing. Trapped and ventilated plumbing system. Marine gravity-type toilet with holding tank. Two exterior electrical outlets.

OPTIONS

(All options not available on all models.)

Fiberglass front, back and rear; Slider windows; Executive models only. Swing bunk. Raised roof for swing bunk. 7-1/2 cu. ft. refrigerator in lieu of 6 cu. ft. 10,000 BTU Coleman Mach I air conditioner. 12,000 BTU Coleman Mach II air conditioner. 13,500 BTU Coleman Mach III air conditioner. Storm windows. Rear travel awning. Divider folding door. Power fan in roof vent. Extra roof vent. Eye-level oven. Battery clock. Bedspreads. Spare tire (8-ply rated) and wheel. Spare tire carrier. AM-FM stereo, antenna and speakers. Roof-mount TV antenna. Extra overhead. Wire for stereo. Kitchen carpet. Extra holding tank. Additional 110-volt and 12-volt outlets and TV jacks. MOR/ryde suspension.

Customer check. Install fifth wheel. Gas bottle covers. Spare tire covers. Water purifier. Aluminum gas bottles. Tip-out room for 35 ft. model. Luggage rack and ladder. B.A.L. jacks. Door bell. 14" color TV. Two 32 x 72 mats with bolster and bookcase in lieu of sofa. 80" hide-a-sofa. 50" hide-a-sofa.

Note: Fifth wheel brackets are included in the price of all fifth wheel trailers. However, they are for Chevrolet and Ford pickups. All other brackets must be specially ordered.

Prices and specifications subject to change without notice. All prices F.O.B. Nappanee, Indiana.

For families desiring more room in their recreational vehicle, the 35 ft. Kountry Aire travel trailer can be ordered with a tip-out. Available in the one bedroom model only, tip-outs are an ideal way to gain additional living and sleeping space to make your going with Kountry Aire even greater.



**You're riding on our reputation
and you can bank on it.**

Kountry Aire



NEWMAR INDUSTRIES, INC.

P.O. Box 30, Nappanee, Ind. 46550

(DEALERS: Phone (219) 773-7791 for franchise)

Kountry Aire

NEWMAR INDUSTRIES, INC.

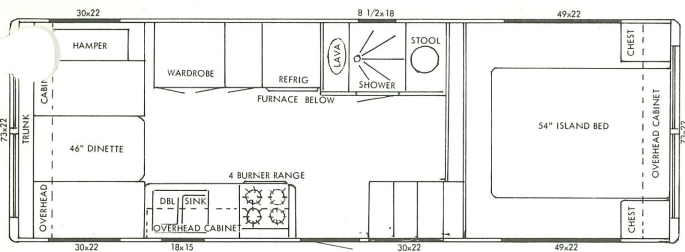
NAPPANEE, INDIANA

FIFTH WHEEL



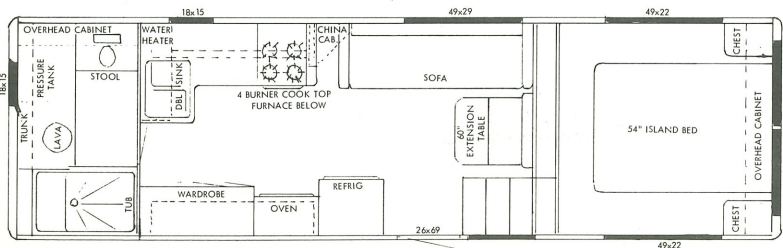
Very Smart Looking with Front Awning.

Well-built with Trouble Free Exterior.



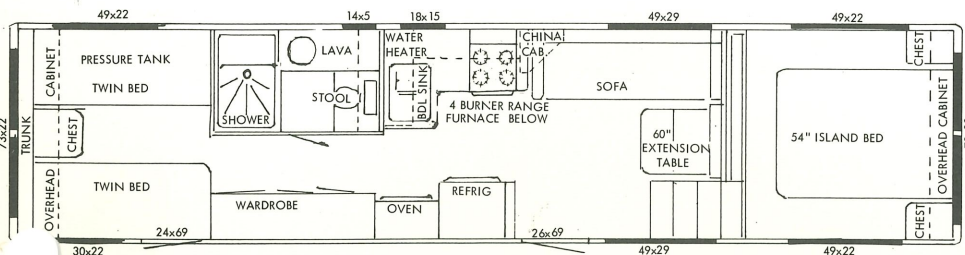
22 FT. REAR DINETTE

6 cu. ft. gas-electric refrigerator, 22,000 BTU heater, 4 burner range with bi-fold lid, glass oven door, 6 gallon gas water heater, 30 gallon pressure water tank with air compressor, shower, lavatory, marine stool with holding tank, 63 amp battery with case and 12 volt converter, .030 metal, carpeting, 8 ply rated tires, tandem axles, 12" brakes, shocks, double sink, 30 lb. gas bottles, automatic changeover regulator.



27 FT. REAR BATH

6 ft. gas-electric refrigerator, 30,000 BTU heater, 4 burner range with wall mounted oven, glass oven door, 8 gallon gas-electric water heater, 30 gallon pressure water tank with air compressor, shower, lavatory, marine stool with holding tank, carpeting, 63 amp battery with case and 12 volt converter, .030 metal, 12 volt power fan in bath, 8 ply rated tires, tandem axles, 12" brakes, shocks, double sink, 30 lb. gas bottles, automatic changeover regulator.



35 FT. CENTER BATH

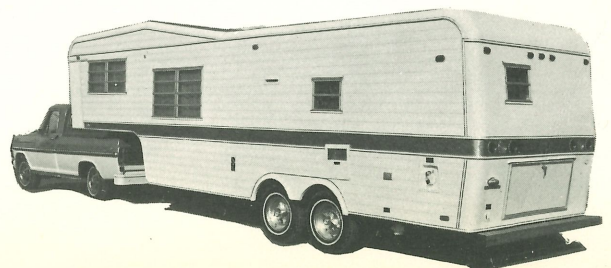
6 ft. gas-electric refrigerator, 30,000 BTU heater, 4 burner range with wall mounted oven, glass oven door, 8 gallon gas-electric water heater, 30 gallon pressure water tank with air compressor, shower, lavatory, marine stool with holding tank, carpeting, 63 amp battery with case and 12 volt converter, .030 metal, 12 volt power fan in bath, 8 ply rated tires, tandem axles, 12" brakes, shocks, double sink, 30 lb. gas bottles, automatic changeover regulator.

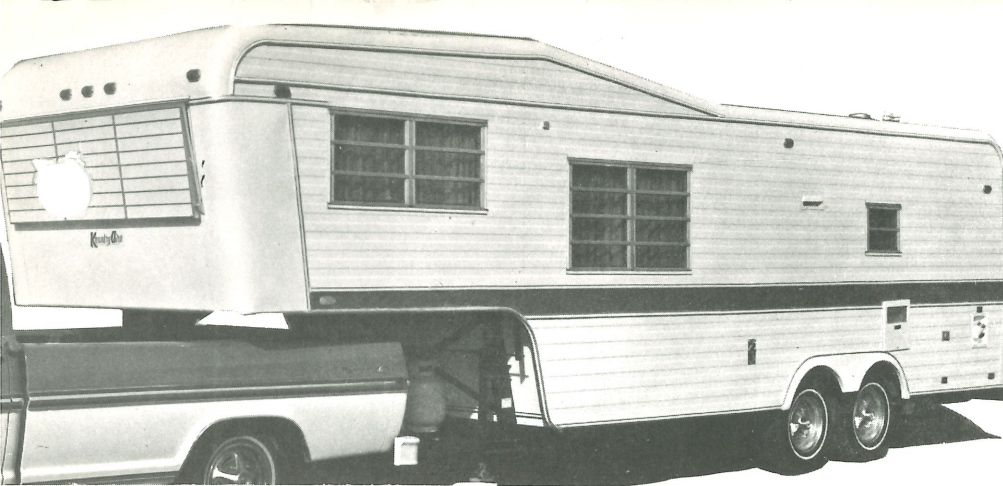
Prices and specifications subject to change without notice.

NEWMAR INDUSTRIES, INC.

Box 42 - Phone 219-773-7791

NAPPANEE, INDIANA 46550





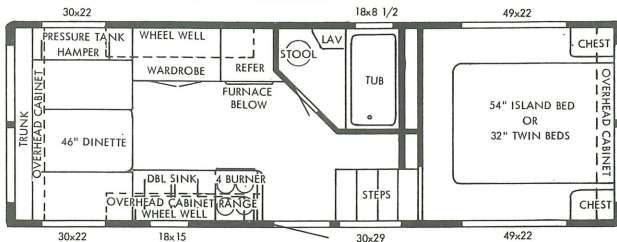
Kountry Aire

NEWMAR INDUSTRIES, INC. NAPPANEE, INDIANA

FIFTH WHEEL

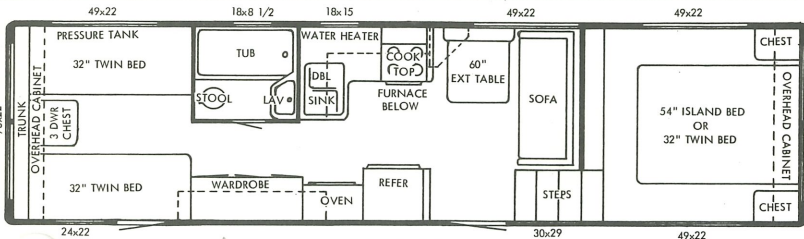
Well-built with Trouble Free Exterior.

1974

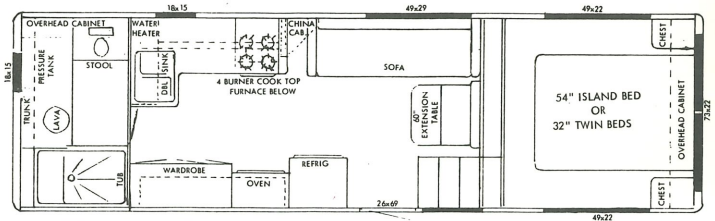


22 FT. REAR DINETTE \$5827.00

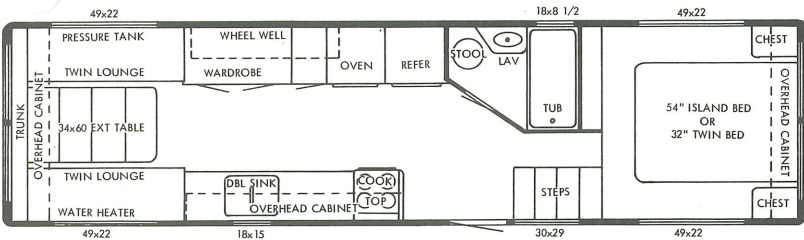
6 cu. ft. gas-electric refrigerator, 22,000 BTU heater, 4 burner range with bi-fold lid, glass oven door, 6 gallon gas water heater, 30 gallon pressure water tank with air compressor, shower, lavatory, marine stool with holding tank, 80 amp battery with case and 12 volt converter, .030 metal, carpeting, 8 ply rated tires, tandem axles, 12" brakes, shocks, double sink, 30 lb. gas bottles, automatic changeover regulator.



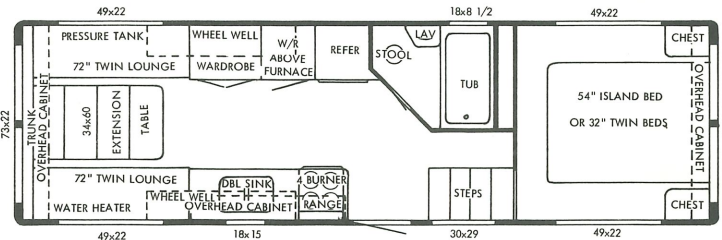
T. CENTER BATH — \$6820.00



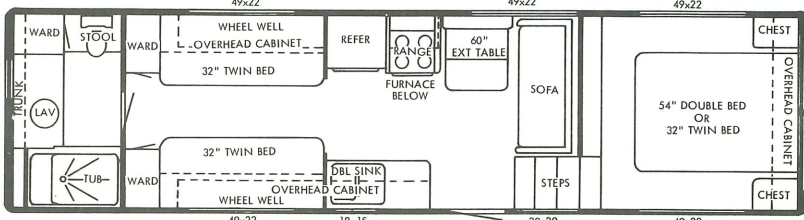
27 FT. REAR BATH — \$6360.00



32 FT. FRONT BATH — \$6820.00

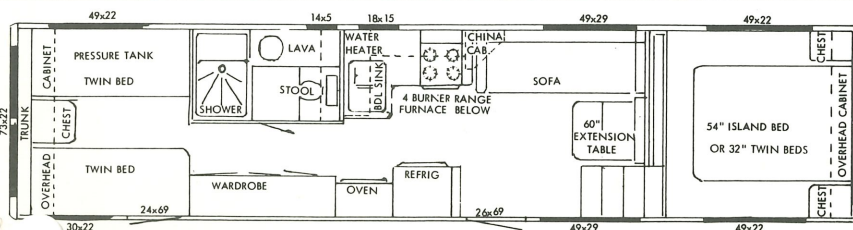


27 FT. FRONT BATH — \$6360.00



32 FT. REAR BATH — \$6820.00

6 cu. ft. gas-electric refrigerator, 30,000 BTU heater, 4 burner range with wall mounted oven, glass oven door, 8 gallon gas-electric water heater, 30 gallon pressure water tank with air compressor, shower, lavatory, marine stool with holding tank, carpeting, 80 amp battery with case and 12 volt converter, .030 metal, 12 volt power fan in bath, 8 ply rated tires, tandem axles, 12" brakes, shocks, double sink, 30 lb. gas bottles, automatic changeover regulator.



T. CENTER BATH — \$7160.00

Prices and specifications subject to change without notice.
All Prices F.O.B. Nappanee, Indiana

NEWMAR INDUSTRIES INC.

PHONE 219 773-7791

P. O. BOX 30

NAPPANEE, INDIANA 46550

