



ARABIAN

RECREATIONAL VEHICLES

FILLED WITH GOOD IDEAS FOR THOSE
WHO WISH TO GO STEADY



ARABIAN

The Arabian is a beautiful RV filled with good ideas for comfort and safety.

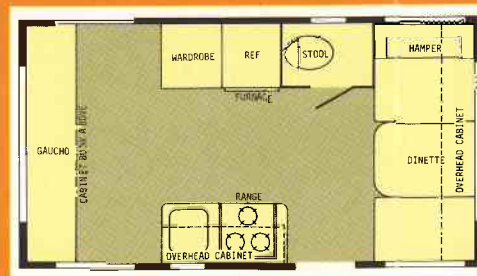
COMFORT — The Universally wanted feature by today's outdoor people. Arabian comfort includes complete baths, foam cushions, well designed living areas with 6'4" ceilings, sleeping and storage for 4 or more and self-containment contentment in electrical, plumbing, heating and pressure water systems.

SAFETY — Full attention is given to ever important safety considerations. These include safety glass, tandem axles with electric brakes on all wheels, exterior lighting system, break-a-way switch and excellent construction.

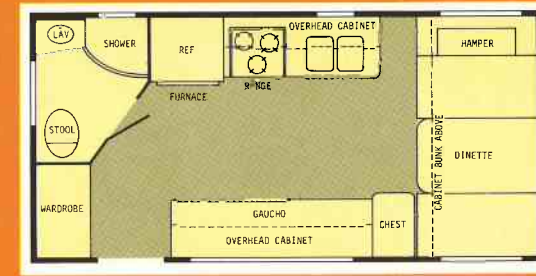
COVER: The Arabian 5th Wheel sports an attractive exterior with colorful striping, large jalousie windows, front awning and enclosed gas bottles and battery.

ABOVE: The travel trailers by Arabian have a similar decorative exterior and offer you a higher class of outdoor living from a medium priced class RV.

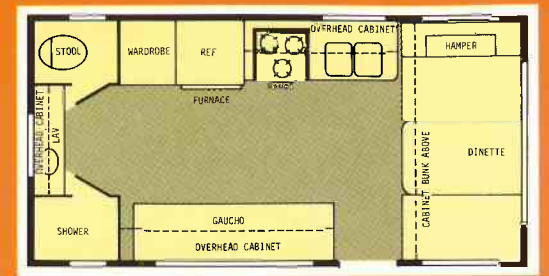
ARABIAN FLOOR PLANS



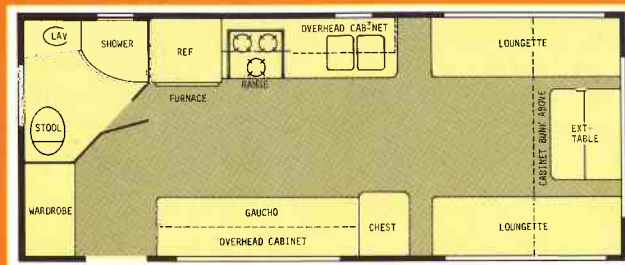
17' REAR GAUCHO



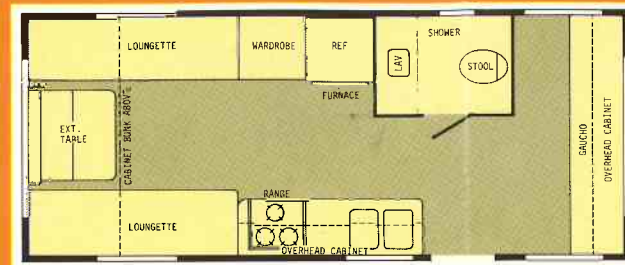
19' REAR BATH



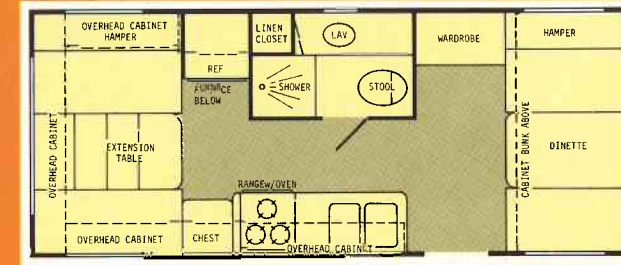
19' REAR VANITY



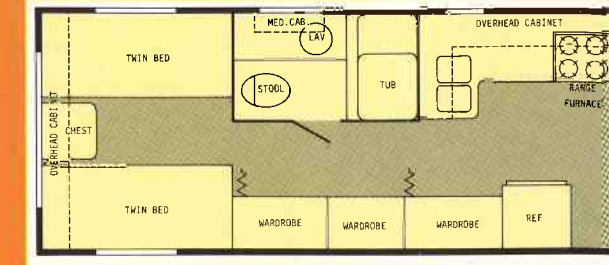
22' REAR DOOR REAR BATH



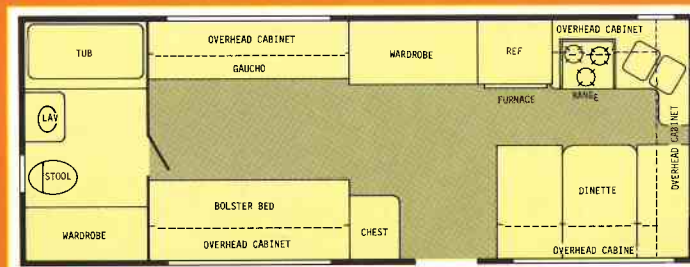
22' TWIN LOUNGETTE



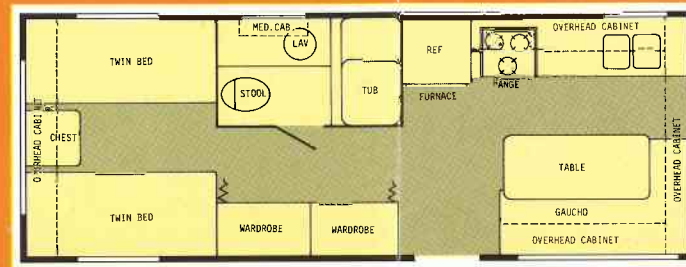
22' CENTER BATH



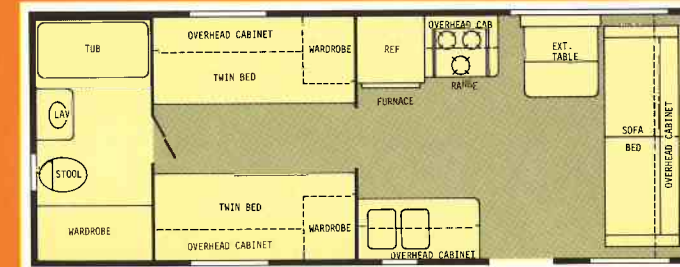
30' CENTER BATH



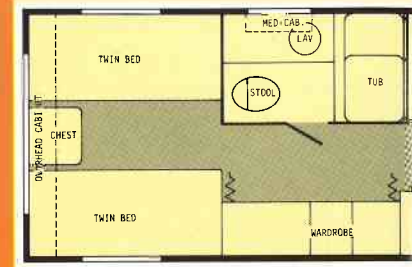
24' FRONT KITCHEN



24' CENTER BATH



24' REAR BATH

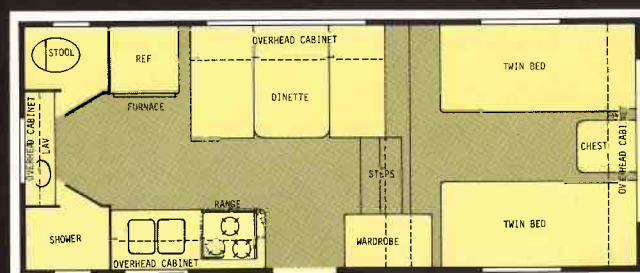


26' CENTER BATH

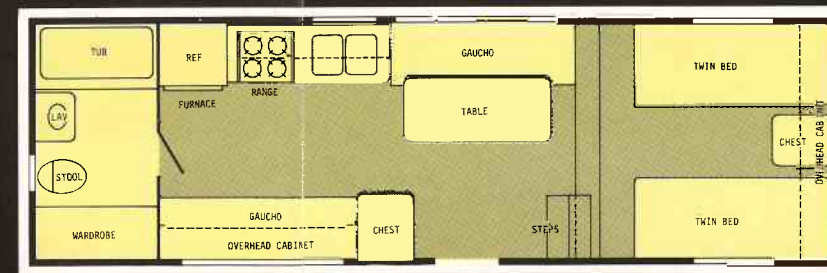
TRAVEL
TRAILERS

attractive interiors / conveniently arranged

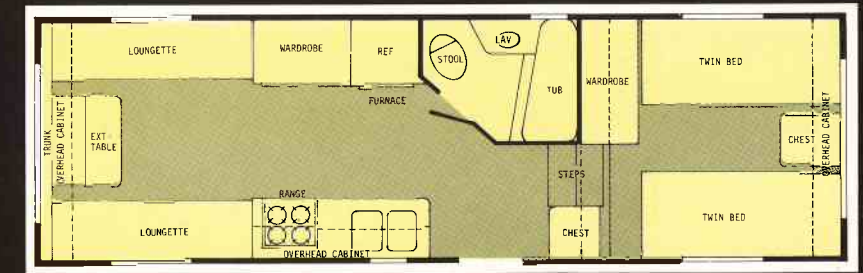
FIFTH
WHEELS



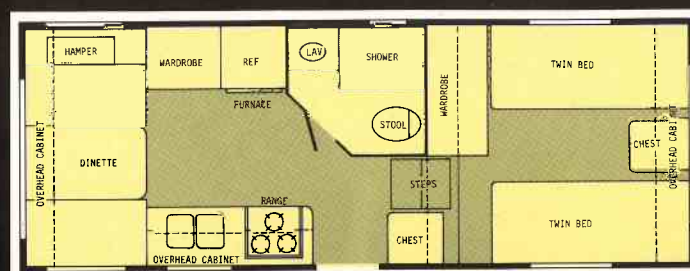
19' REAR VANITY 5th WHEEL



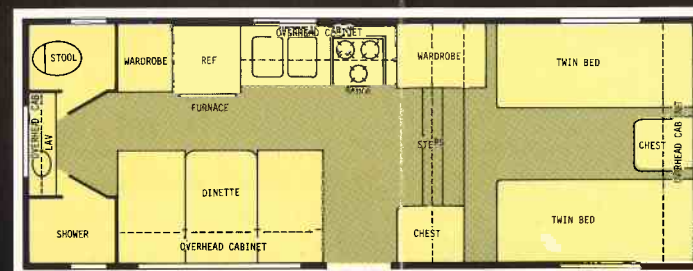
26' REAR BATH 5th WHEEL



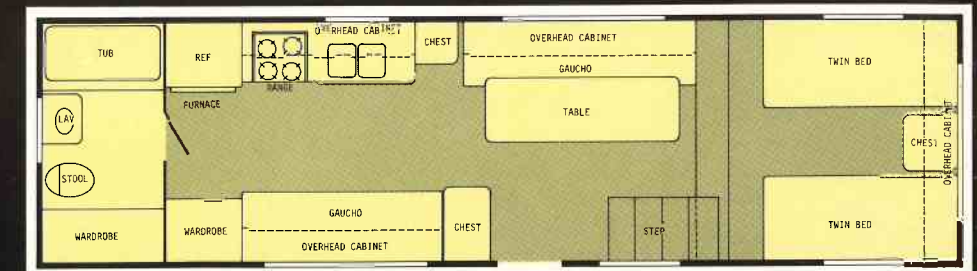
26' FRONT BATH 5th WHEEL



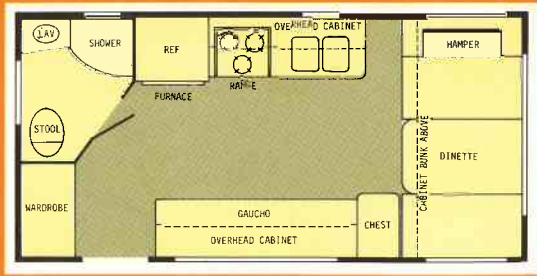
22' FRONT BATH 5th WHEEL



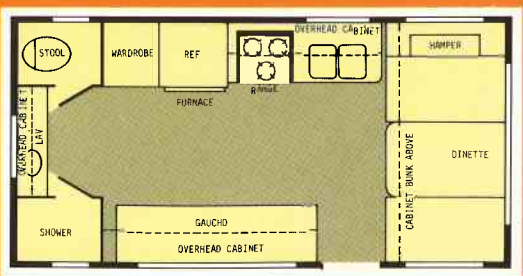
22' REAR BATH 5th WHEEL



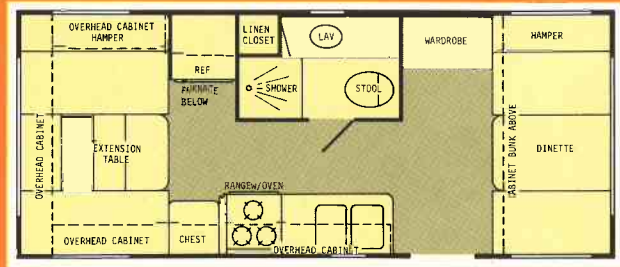
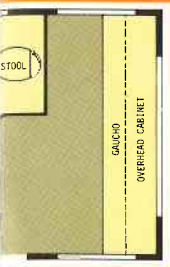
30' REAR BATH 5th WHEEL



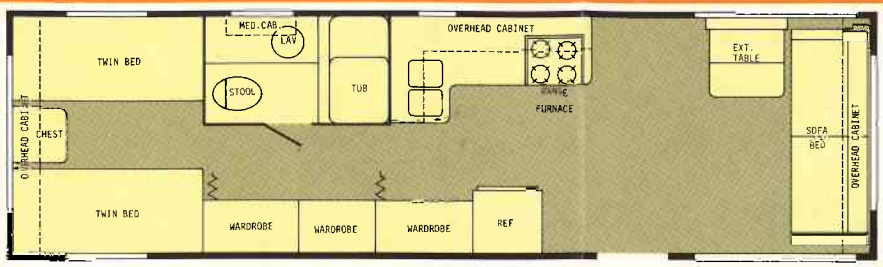
19' REAR BATH



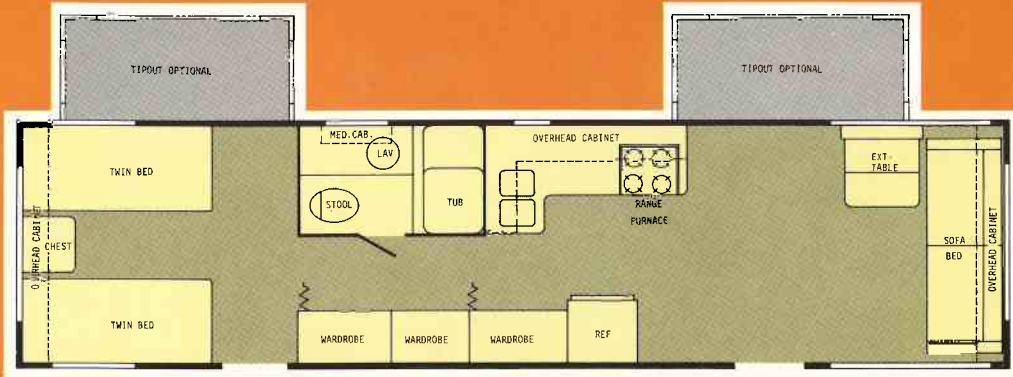
19' REAR VANITY



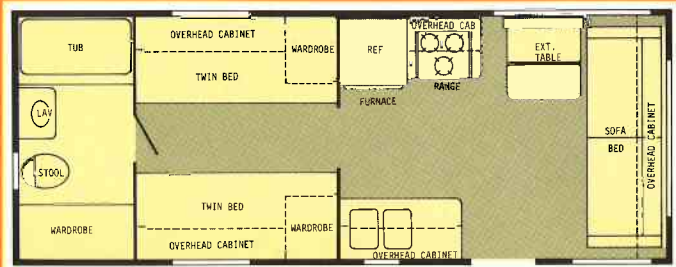
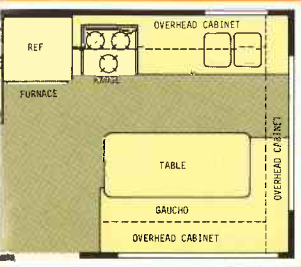
22' CENTER BATH



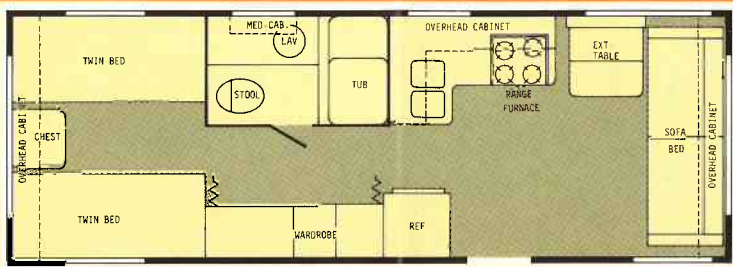
30' CENTER BATH



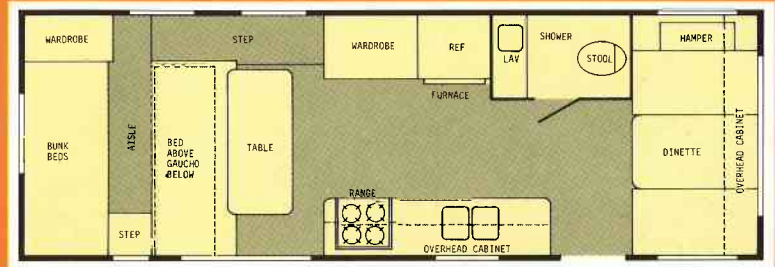
35' CENTER BATH



24' REAR BATH

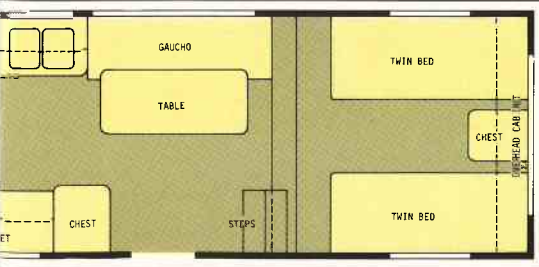


26' CENTER BATH

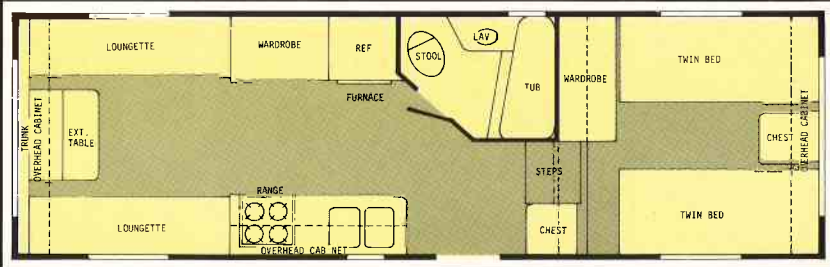


26' ESTATE

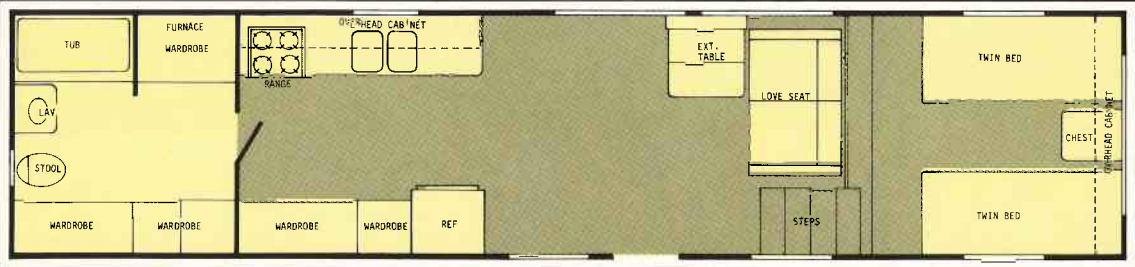
ly arranged



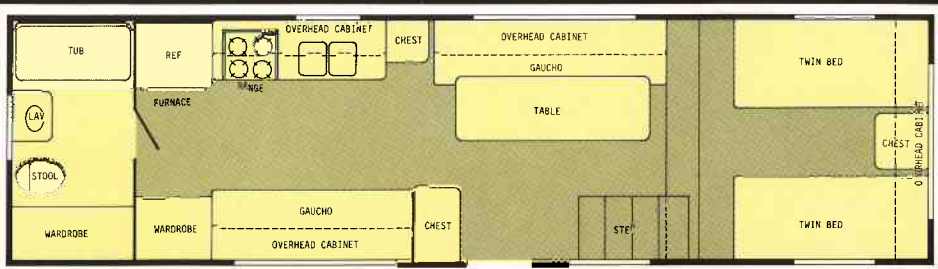
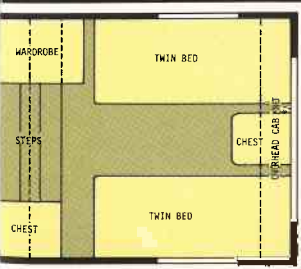
HEEL



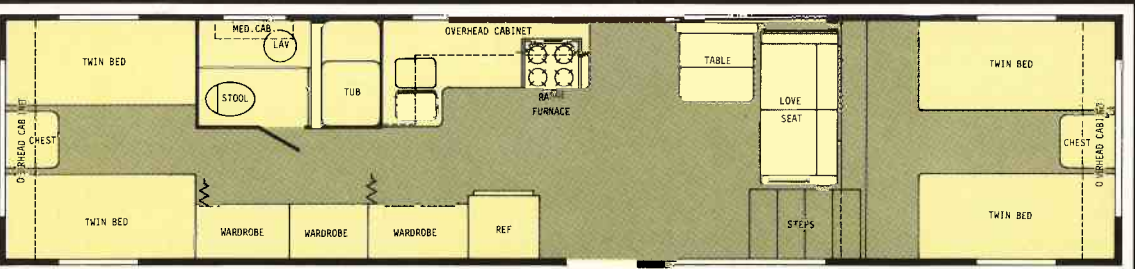
26' FRONT BATH 5th WHEEL



35' REAR BATH 5th WHEEL



30' REAR BATH 5th WHEEL



35' CENTER BATH 5th WHEEL



ARABIAN FEATURES AND SPECIFICATIONS

All the equipment you dreamed it would have.

EXTERIOR

Heavy gauge prefinished aluminum with gold anodized insert
 • Fully coated roof seams • Roof vents • All models pre-wired for air conditioning • Fold-away steel steps • Wheel covers • Awning rail • Safety glass • Vinyl screw cover • ICC cluster and side running lights • Two tail and stop lights • Break-a-way switch with battery • Two back-up lights • Porch light • Front travel awning • Enclosed gas bottles on fifth wheel models • Storage access doors on most models.

INTERIOR

Easy-care vinyl-finished paneling • Telephone-type shower with shut-off • Ample wardrobe and drawer storage • Overhead cabinets • Cabinet bunks in models 17' — 22' trailers • Heavy duty folding doors • Kitchen mirror in some models • Molded tub or shower • Medicine cabinet with mirror • Built-in hamper (some models) • Full length screen doors • 5 cu. ft. gas and electric refrigerator with freezer compartment (6 cu. ft. optional) • Double stainless steel sink in all models except 17' trailer • 3 burner range with bi-fold cover and oven in models 17' thru 24' • 4 burner range with bi-fold cover and oven in models 26' thru 35' • 5" cushions • Positive catches on all cabinet doors.

CHASSIS & RUNNING GEAR

5" frame • Reinforced third member A-frame • Heavy-duty 2-5/16" coupler and jack • Rear bumper and hose carrier • Multi-leaf springs with center load equalizer (tandem) • Tandem axles (all models except 17' travel trailer and 19' fifth wheel) • 3500 pound hub group per axle • 15" wheels • 10" electric brakes on all wheels • Load Range C rated tires.

BODY CONSTRUCTION

Floors 2 x 2s on 16" center with 5/8" plywood • 2 x 2 side-walls reinforced with belt rail • Insulation • Vinyl finished plywood • All-weather roof and floor board.

ELECTRICAL, PLUMBING, HEATING

110 and 12 volt lighting system with converter • Heavy duty battery with locking case • All grounded receptacles and switches • Breaker panel with 25 ft. 110 volt power supply cord • Two 20 lb. LP gas bottles with regulator • 15,000 BTU heaters with wall thermostat 17' — 22' models • 22,000 BTU above floor ducted heat with wall thermostat 24' and 26' models • 32,000 BTU above floor ducted heat with wall thermostat 30' and 35' models • 20 gallon pressure water system in 17', 19' model (trailers) and 19' and 22' models (fifth wheels) • 30 gallon pressure water system in 22', 24', 26', 30' and 35' models (trailers) and 26', 30' and 35' models (fifth wheels) • Air compressor • 6 gallon gas water heater (optional on 17' model) • Copper lines on hot and cold water system • Non-corrosive plastic drain and sewage plumbing • Trapped and ventilated plumbing system • Marine gravity-type toilet.

OPTIONAL EQUIPMENT

Raised roof for bunk • Cabinet bunk • Solid bunk with 2 pane windows • Refrigerators in larger sizes • 10,000, 12,000 or 13,500 BTU air conditioners • Storm windows • Travel awning (rear) • Power fan in roof vent • Extra roof vent • Spare tire and wheel • Spare tire carrier • AM-FM Stereo and 4 speakers • Roof mount TV antenna • Extra TV Jack • Outside 110 volt outlet • Extra inside 110 or 12 volt outlet • 12 volt 22,000 BTU ducted heat in lieu of 15,000 • Extra overhead cabinet • 30 lb. gas bottles • Automatic change over regulators • Stabilizing jacks, set of 4 • Carpet per running foot • Clock • 12 volt blower for 15,000 BTU heater • Extra holding tank • Divider folding door • Eye-level oven combination • Customer check • Install fifth wheel • 30 gallon water tank, when possible • Glass sliding door in lieu of standard door (35' Center Bath Park Model ONLY) • Tip out rooms (35' Center Bath Park Model ONLY) • Hurricane Straps.

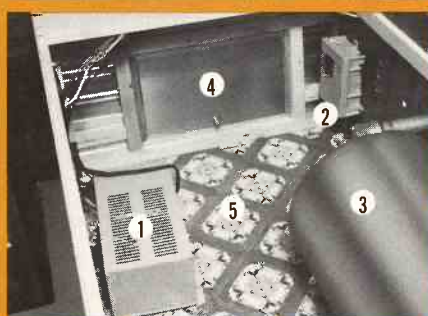
New Enclosed Gas Bottle Storage

1. 20 lb. gas bottles
2. Regulator
3. Battery
4. Aluminum Exterior
5. Heavy Duty 5th Wheel Jacks



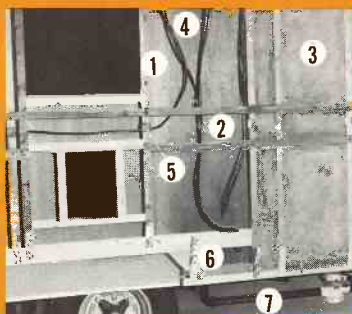
Electrical and Other Features

1. 30 amp. converter/charger
2. Breaker Box
3. Pressure Water Tank
4. Access Door for under bed storage (most models)
5. Floor completely tiled



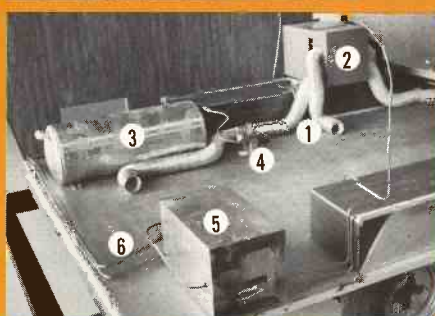
Sidewall Construction

1. 2" x 2" construction
2. Belt Rail Reinforcement
3. Fully Insulated
4. Code Approved Wiring, 110V & 12V.
5. Steel Wiring Sleeves.
6. Reinforcement straps tie studs to foundation
7. Code approved plumbing



Heating and Water Systems

1. Above floor ducted heat (24' to 35' models)
2. Furnace
3. Pressure Water Tank
4. Air Compressor
5. Gas Water Heater
6. Copper—hot and cold water lines



Newmar Industries warrants only factory installed equipment. Prices and specifications are subject

to change without notice. All prices are F.O.B., Nappanee, Indiana.

Newmar Industries does not recommend recreational vehicles for permanent dwelling.



ARABIAN

Arabian Industries, Inc. • P.O. Box 30 • Nappanee, Indiana 46550

A subsidiary of Newmar Industries, Inc.