

Kountry Aire[®]

RECREATIONAL VEHICLES

WHERE THE GOING IS GREAT

The 29' Kountry Aire shown with optional radius windows and optional bottle cover.

1976





An attractive front living room, fully carpeted, has roller curtains, indirect lighting in valances, both 12V and 110V lighting and vinyl covered paneling. (The TV antenna is optional).

2

The comfortable Kountry Aire is a natural to make going great with a handsome design and totally self-contained interiors.

Kountry Aire's exterior goes great because of a design that looks good and tows efficiently

Kountry Aire TRAVEL TRAILERS
NATURAL IN THE OUTDOORS
TO MAKE YOUR GOING GREAT

with minimum wind resistance. All exterior surfaces are aluminum and all windows are safety glass. Every model has tandem axles with weight distribution planned to make your Kountry Aire lighter on your car.

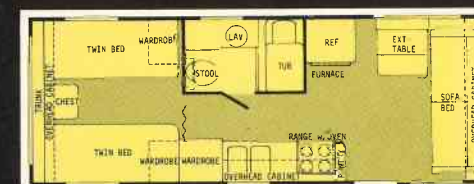
You'll relax in a Kountry Aire. Plush colorful carpeting. Well equipped kitchens that include a hidden pantry (most models) and 7 1/2 cu. ft. refrigerator. Your choice of decorator color schemes with dark or light paneling. These and other features combine to make Kountry Aire a great place to be and roller curtains make it all yours in complete privacy.

For greater traveling safety Kountry Aire features Load Range "D" rated tires; 12" electric brakes and high capacity shock absorbers on all wheels; running lights all around; and a heavy duty coupler.

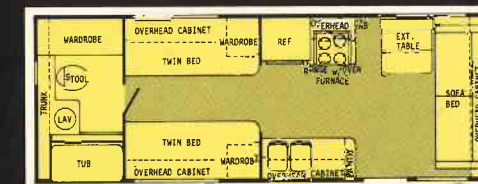
There's considerably more to say about Kountry Aire but we suggest you look closely at models that appeal to you and let Kountry Aire speak for itself.



The kitchen is beautiful and exceptionally well equipped. A pantry is hidden behind the magazine rack. The folding cover on the range and a fold down counter next to the sink add extra counter space.

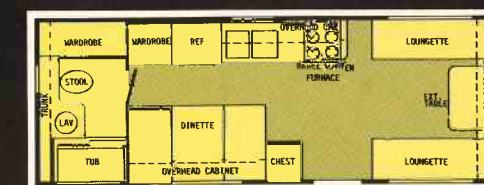


25' CENTER BATH

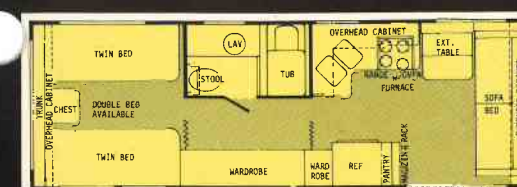


25' REAR BATH

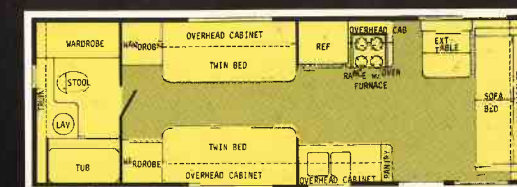
Travel Trailer floor plans



25' REAR BATH SIDE DINETTE



27' CENTER BATH

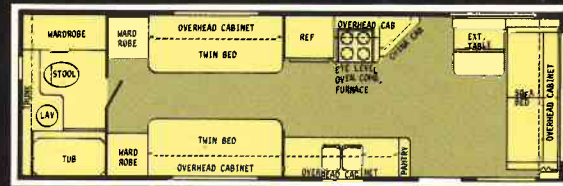


27' REAR BATH

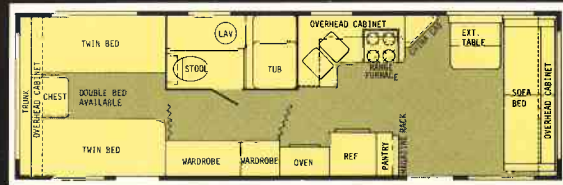
3

Kountry Aire

Travel Trailer floor plans



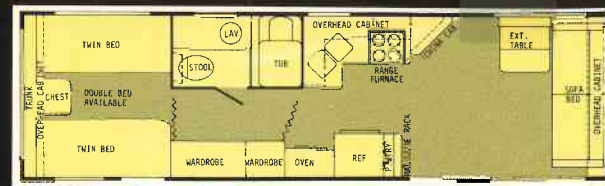
29' REAR BATH



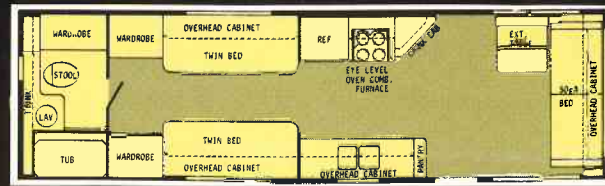
29' CENTER BATH

PARK MODELS with space making Tip-Outs

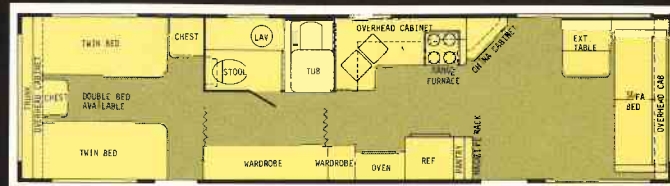
For families desiring more room a 35 ft. Kountry Aire recreational vehicle can be ordered with a tip-out. Available in one bedroom models only, tip-outs are an ideal way to gain additional living and sleeping space for living comfortably during extended periods of time. (Bottle cover and TV antenna are optional)



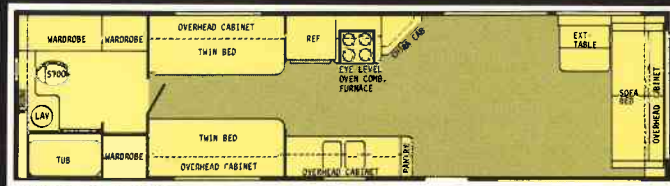
31' CENTER BATH



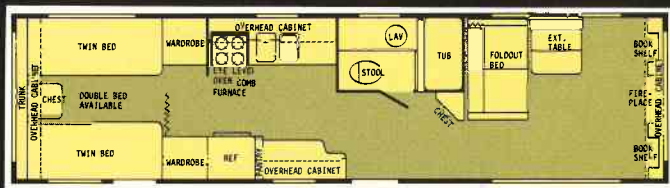
31' REAR BATH



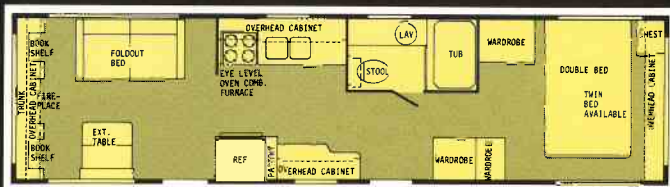
35' CENTER BATH 1 BEDROOM



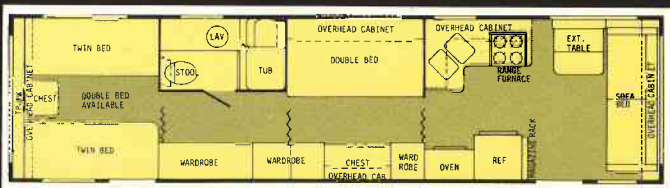
35' REAR BATH



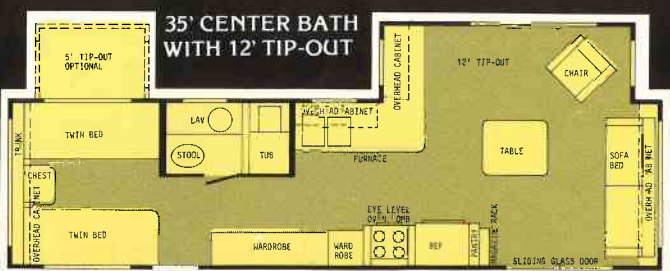
35' FRONT LIVING ROOM



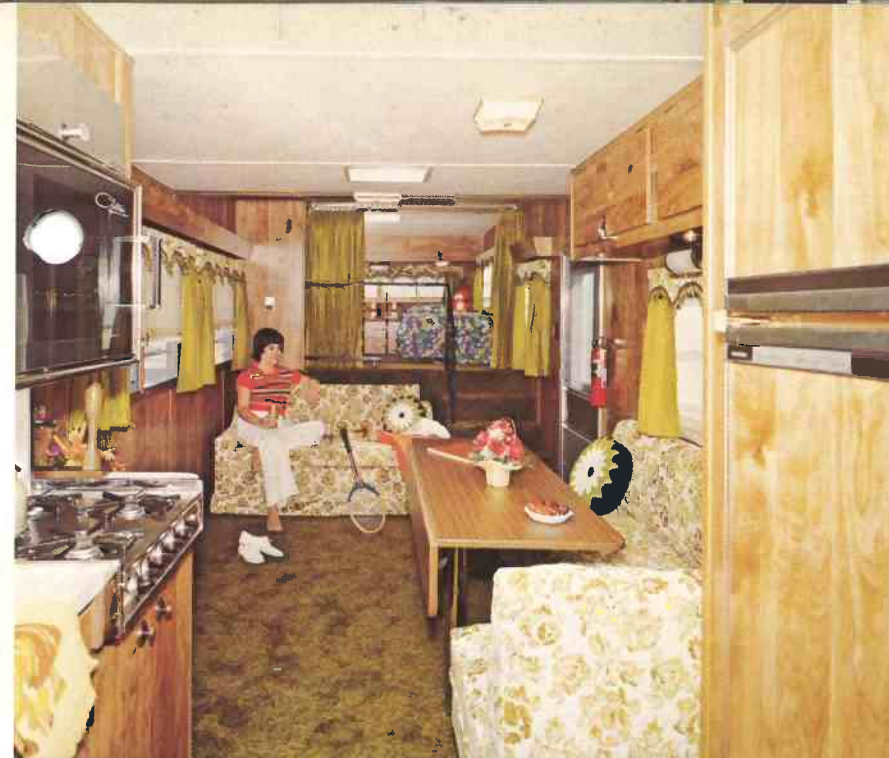
35' REAR LIVING ROOM



35' CENTER BATH 2 BEDROOMS



35' CENTER BATH WITH 12' TIP-OUT



Kountry Aire

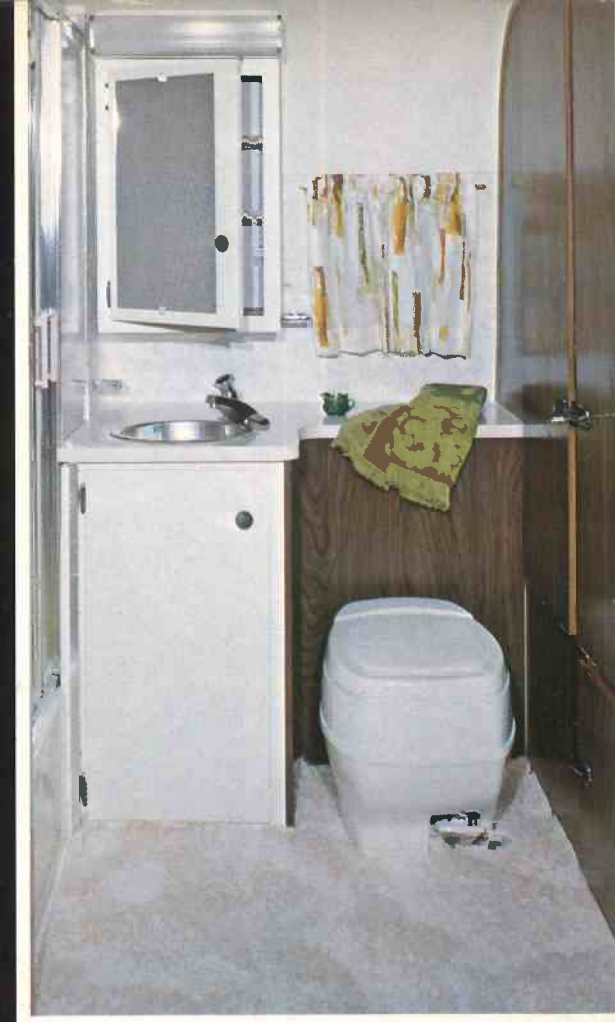
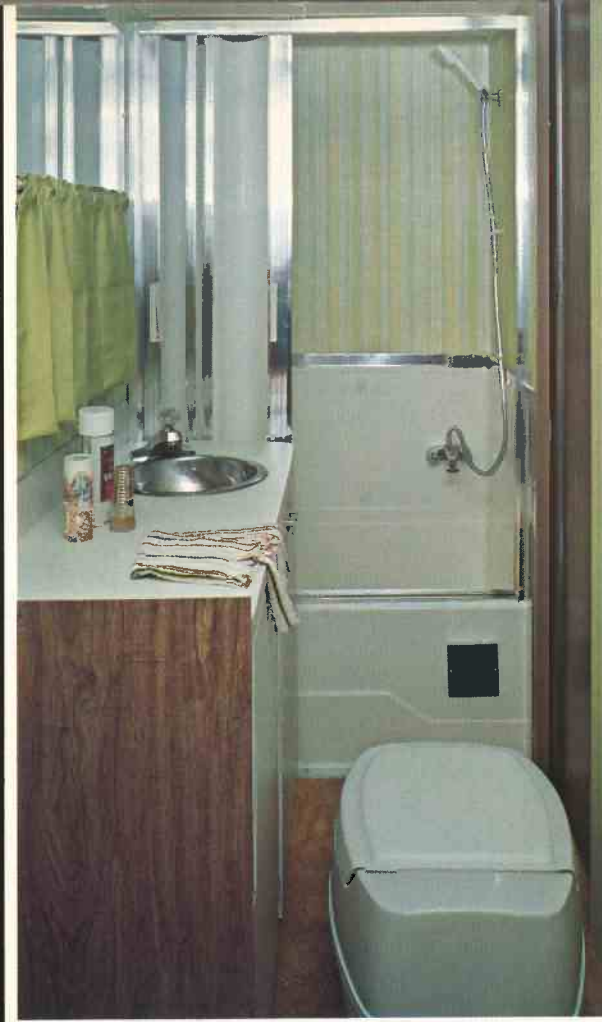
FIFTH WHEELS
Another great way to go.

Hook up the Kountry Aire Fifth Wheel and you're ready to hit the road in comfort and style. Self-contained, the fifth wheels are easy to tow and maneuver. A new slant back design combined with radius corners cuts wind resistance and, on the inside, there's all the convenience you'd want in your home on the road.

Kountry Aire fifth wheels offer the same features, accessories and furnishings as the travel trailers. Fifth wheel recreational vehicles by Kountry Aire are another way to make your going great.

The front bedroom and large living area are both carpeted, comfortably equipped and great to live in. The 35' model below is shown with optional radius corner windows. Exceptionally roomy the 35' makes itself home wherever it may be.





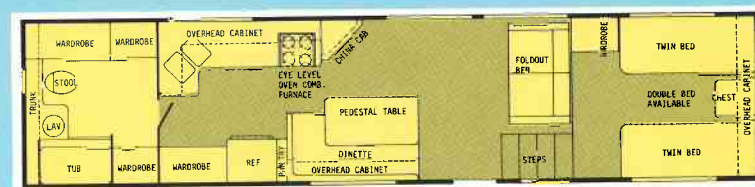
CENTER BATH
One of these attractive baths is available for all Kountry Aires. The Center Bath shown here has a molded fiberglass tub with shower enclosure. Storage space is provided in the medicine cabinet and below the stainless steel lavatory.

REAR BATH
The rear bath features a large closet, tub with shower enclosure, stainless steel lavatory, medicine cabinet, and like the center bath, it is colorfully carpeted.

The 35' Side Dinette has a large drop leaf table, exceptionally spacious kitchen and roomy rear bath.

Kountry Aire FIFTH WHEEL FLOOR PLANS

6



35' REAR BATH SIDE DINETTE



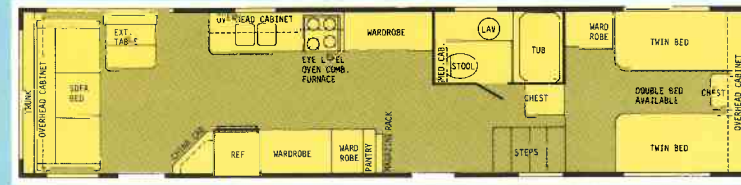
35' CENTER BATH 2 BEDROOMS



28' FRONT BATH



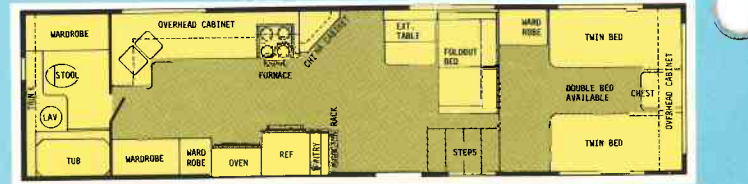
35' REAR BATH



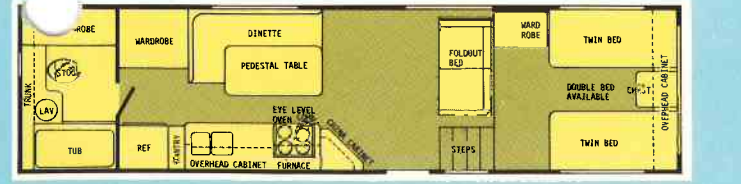
35' FRONT BATH



28' REAR BATH



32' REAR BATH



32' REAR BATH SIDE DINETTE



32' FRONT BATH

Living areas in fifth wheels are all decorator designed, featuring fine fabrics and rich carpeting. Wrought iron railings add an elegant look to the stairs leading to the upper bedroom. Valances with indirect lighting are in the front areas of all models.

7

EXTERIOR

.030 prefinished aluminum on front and rear and .024 on sides with gold anodized insert. Engineer-designed caps and radius corners. Fully covered aluminum under chassis. Fully coated aluminum roof. Insulated wheel wells. Storage trunk with light. All models pre-wired for air conditioning. Fold-away steel step with light. Wheel covers. Awning rail. Safety glass. Snap-in exterior trim. ICC cluster and side running lights. Two back-up lights. 12 volt light in front by gas bottles. Front travel awning. 12 volt light beside door. Break-away kit.

INTERIOR

Easy-care vinyl finished paneling. Telephone-type shower with shutoff. Ample wardrobe and drawer storage. Overhead cabinets with shelves. Heavy-duty folding doors. Folding chairs in most models. Kitchen

THE Elegant Kountry Aire

GENERAL SPECIFICATIONS AND FEATURES

mirror in most models. Molded fiberglass tub or shower. Medicine cabinet with mirror. Stainless steel bath lavatory. Full length screen doors. Forced air heating system. Indirect lighting in living room. Removable window screens. 7-1/2 cu. ft. gas and electric refrigerator with freezer compartment, (10 cu. ft. optional some models). Double stainless steel sink. 4-burner range with folding cover and oven. Twin or double innerspring mattress. Storage pantry and magazine rack most models. Roller curtains, drapes and valances. High quality carpet. Tile in kitchen in all trailers and some fifth wheels. Positive catches on cabinet doors. Shower enclosures on all tubs.

CHASSIS AND RUNNING GEAR

6" Steel frame. Reinforced third member A-frame. Heavy duty 2-5/16 coupler and jack. Chrome rear bumper and hose carrier. Leaf springs suspension with center load equalizer. Tandem axle (all models). 5200 pound hub group per axle. Heavy duty 15" wheels. High capacity

shocks on all wheels. 12" electric brake systems. 7:00 x 15, load range "D" rated tires.

BODY CONSTRUCTION

All floors are a double layer of 5/8" plywood glued and screwed. 2 x 2 walls on 16" centers reinforced with belt rails and all plywood glued. 1-1/2" fiberglass wall insulation. 3" fiberglass insulation in ceiling and floors. Vinyl finished plywood. All-weather roof and floor board.

ELECTRICAL, PLUMBING AND HEATING

110 volt and 12 volt lighting system with converter. Heavy duty battery with locking case. Accessible power breaker panel. Television lead-in jack. All grounded outlets and switches. 25 ft., 110 volt power supply cord. 12 volt power fan in bath.

Two 30 pound L.P. gas tanks and automatic changeover regulator. Forced air heating with blower and above-floor ducting system. 22,000 BTU furnace in 25' & 27'. 32,000 BTU furnace in all other models. Wall thermostat. 30 gallon water pressure system with air compressor. 8 gallon gas water heater all models. Inside copper lines on hot and cold water system. Non-corrosive plastic drain and sewage plumbing. Trapped and ventilated plumbing system. Marine gravity-type toilet. Two holding tanks in heated area.

OPTIONS

(All options not available on all models)

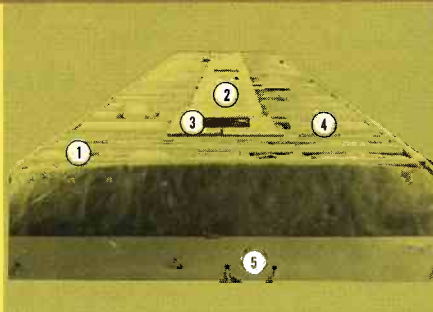
Slider windows. Swing bunk. Raised roof for swing bunk. 10 cu. ft. refrigerator in lieu of 7-1/2 cu. ft. 10,000 BTU, 12,000 BTU or 13,500 BTU air conditioner. Storm windows. Rear travel awning. Divider folding door. Power fan in roof vent. Extra roof vent. Battery clock. Bedspreads. Spare tire (load range "D" rated) and wheel. Spare tire carrier. 12V AM-FM stereo, antenna and speakers. Roof-mount TV antenna. Extra overhead. Wire for stereo. Carpeting in kitchen. Additional 110-volt and 12-volt outlets and TV jacks. Code approved bathroom and exterior 110V receptacle. Customer check. Install fifth wheel. Gas bottle covers. Spare tire covers. Water purifier. Aluminum gas bottles. Tip-out room for 35 ft. model. Luggage rack and ladder. Trailer stabilizing jacks. Door bell. 14" color TV.

NOTE: Fifth wheel brackets are included in the price of all fifth wheel trailers. However, they are for Chevrolet and Ford pickups. All other brackets must be specially ordered.

Solid Construction in Every Kountry Aire.

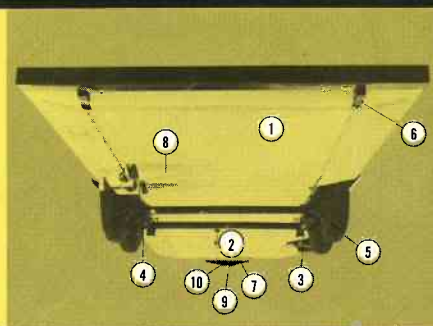
ROOF, Heavily Insulated.

(1) 2" x 4" rafters every 16". (2) 5/8" center construction. (3) Reinforced openings. (4) 3" fiberglass insulation. (5) Wiring Harness for Clearance Lights.



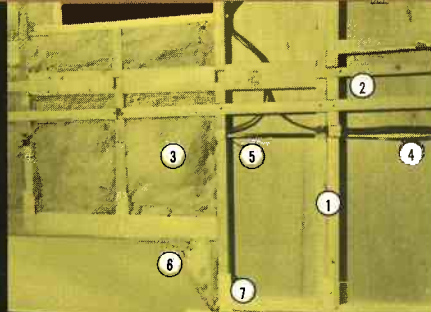
ALUMINUM UNDERSIDE

(1) Prefinished aluminum underside. (2) 1/2" gas line. (3) Foldaway step with light. (4) Tandem axle. Leaf spring suspension. (5) Heavy duty wheels with shocks and 12" electric brakes. (6) 6" steel frame. (7) 3-member A-frame. (8) Molded drain pipe cover. (9) Heavy duty jack. (10) 2-5/16" coupler.



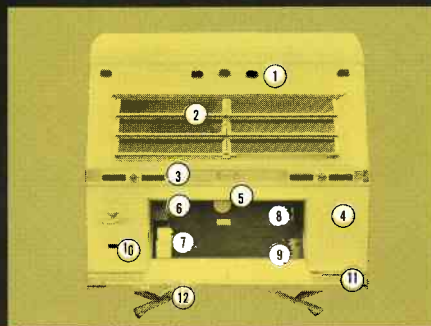
SIDEWALLS. Formed in single unit.

(1) 2" x 2" construction on 16" centers. (2) Reinforced, screwed belt rails. (3) 1-1/2" fiberglass insulation. (4) Heavy-duty wiring. (5) Steel wiring sleeves in studs. (6) Insulated wheel wells. (7) Reinforcement straps tie studs to foundation.



REAR EQUIPMENT

(1) 5 red clearance lights. (2) Safety glass awning windows. (3) Backup, clearance and turn lights. (4) .030 prefinished aluminum exterior. (5) 12V light. (6) Breaker box. (7) 80 amp. battery. (8) 110V electrical outlet. (9) 30 amp. converter. (10) Lead in cord cover. (11) Combination rear bumper & hose carrier. (12) Stabilizing jacks (optional).



Prices and specifications subject to change without notice. All prices F.O.B., Nappanee, Indiana.

Kountry Aire NEWMAR INDUSTRIES, INC.
P.O. Box 30, Nappanee, Indiana 46550

