

81-82
London Aire

Inspired design
lets you live supremely



Inspired exterior design

London Aire, a noble recreational vehicle with smooth aerodynamic lines that create a flowing ride, to make handling an enjoyment. The unit has an aluminum covering over a welded aluminum super-structure. Each unit has tinted safety glass windows, full insulation in all exterior surfaces and Acra-Trac™ wide-track suspension.

Warm and livable interiors

London Aire's warm interiors are made that way with 1/4 in. solid oak wood paneled walls and cabinetry. The ceiling is an acoustical vinyl panel that quiets sounds while it looks beautiful. There is soft fluorescent lighting in the living room and bedroom. The draperies, sheers and tinted windows combine to give privacy 24 hours a day. There are 3 decor combinations in 2 tones of brown and in blue. All colors are in soft shades that are tasteful, relaxing and beautiful. The harmonizing colors are carried throughout each unit to give your

London Aire a quiet spirit that relaxes. Yes, you'll enjoy the warm, quiet and hospitable living a London Aire will provide. And you may also enjoy the prestige as an extra gift that your London Aire will bring.

(bottom right and cover)

The aerodynamically designed London Aire is sharp from any angle. It has wide radius corners and its dove gray color with black accents gives an elegant appearance. The 32 ft. 5th wheel is shown below and a 31 ft. travel trailer is on the cover.

(below left)

Warm oak wood and a triumphant interior design make the London Aire a leader in its field. The kitchen has a pull-out pantry and 10 cu. ft. refrigerator along with a double sink and 4-burner oven. You can store 12 inch plates on the upper cabinet shelves.

(below center)

The soft carpeted living area is almost sweeter than home. The soft colors enhance the genuine woods to provide a truly excellent appearance.

(below right)

The London Aire bath features a large 36" x 40" tub. In addition, the oak vanity offers an oversized lavatory and a 3-mirror medicine cabinet with a light bar.

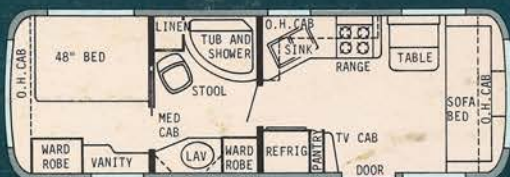


The carpeted rear bedroom has a dressing table, double wardrobe and a double bed. There are large windows on three sides. One serves as a large escape hatch in an emergency.

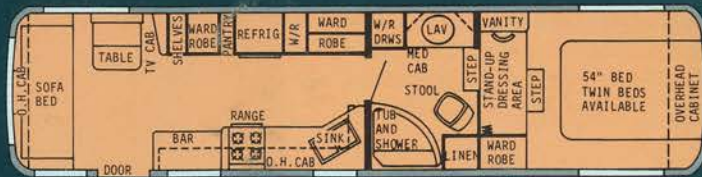
Warm and livable arrangements, decor, and furnishings



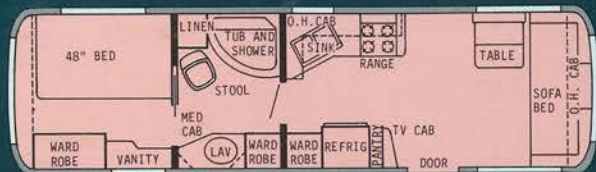
Plans that make living comfortable



THE 27 FT. VISCOUNT CENTER BATH TRAVEL TRAILER



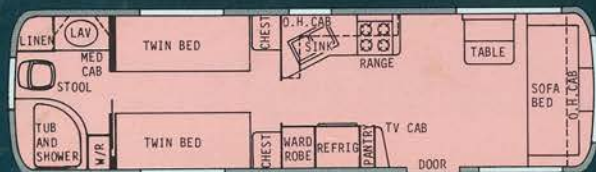
THE 32 FT. STATESMAN WALK-THRU BATH FIFTH WHEEL



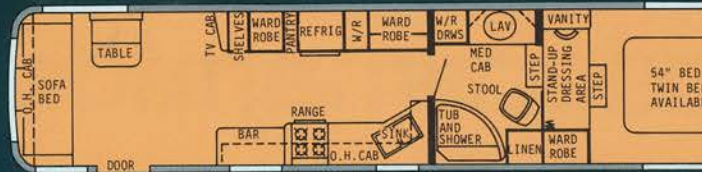
THE 31 FT. VISCOUNT CENTER BATH TRAVEL TRAILER



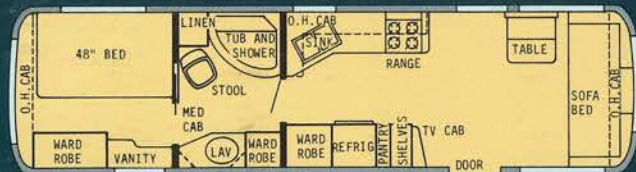
THE 32 FT. BARON REAR BATH FIFTH WHEEL



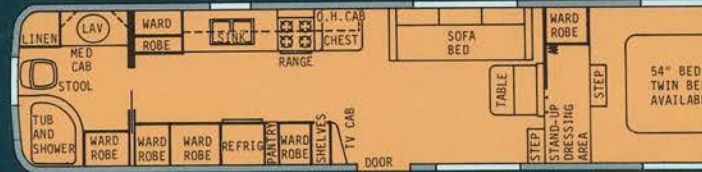
THE 31 FT. BARON REAR BATH TRAVEL TRAILER



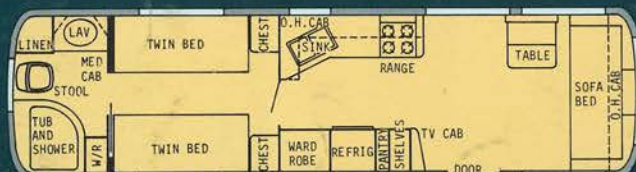
THE 35 FT. STATESMAN WALK-THRU BATH FIFTH WHEEL



THE 33 FT. VISCOUNT CENTER BATH TRAVEL TRAILER



THE 35 FT. BARON REAR BATH FIFTH WHEEL



THE 33 FT. BARON REAR BATH TRAVEL TRAILER

London Aire design features

INTERIOR:

1/4 in. natural oak paneling on walls and cabinets • Perforated, padded vinyl ceiling • Carpeted living room and bedroom • Resilient, no wax, linoleum in kitchen and bath.

KITCHEN

10 cu. ft. refrigerator and freezer • Pull-out pantry • 4-burner range with oven and power vented hood • Double stainless steel sink with single control faucet • Oak cabinets with spring loaded hinges on doors.

BATH

36 in. x 40 in. almond color tub and shower with seat • Telephone-type shower head • Almond stool with padded seat • Double-medicine cabinet with 3 mirrors and light bar • Built-in lavatory with drawers • Linen closet and wardrobe • Power vent in ceiling.

LIVING ROOM

Variegated, sculptured shag carpet with thick pad • Extendable table that seats 4 or 6 • 84 in. sofa bed • Draperies with sheers.

Each London Aire meets all requirements of the RVIA, Recreational Vehicle Industry Association; the ANSI, American National Standards Institute; and all state and federal codes. Some items shown in photographs are not included. Features and specifications are subject to change without prior notice.

BEDROOM

48" beds with comfortable mattress (travel trailers), 54" beds with comfortable mattress (fifth wheels) • Variegated, sculptured carpet with thick pad • Dressing table with drawers and mirror • Wardrobe and overhead cabinets • Stand-up dressing areas (5th wheels).

ELECTRICAL

30 amp. 110V and 12V electrical systems • 40 amp. 110V-12V converter • Overhead fluorescent lighting • Stereo radio with FM, cassette, power booster balance and 10 ounce speakers • Power rotating TV antenna • Digital clock.

COMFORT SYSTEMS

30,000 BTU furnace with forced air ducted heat • 13,500 BTU air conditioner • Demand water system and city water fill • 6 gal. high performance water heater • 40 gal. fresh water tank • 2, 35 gal. waste holding tanks • Dual aluminum 30 lb. gas bottles with gauges and automatic change over.

CONSTRUCTION

6 in. 11 gauge steel tube frame • Welded aluminum superstructure (walls and roof) • Double 5/8" plywood flooring • R10 insulation in ceiling and floors • R5 insulation in sidewalls • Aluminum sides, roof and underside • Front travel awning • Rear travel awning • Tinted safety-glass windows.

RUNNING GEAR

Acra-Trac™ wide track suspension • 12 in. electric brakes on all 4 wheels • 8:55 x 15 white side-wall tires • 4 in. drop axle on travel trailers • Straight axle on fifth wheels • Power jacks (travel trailers) • Manual jacks (5th wheels).

London Aire

Newmar Industries, Inc., P.O. Box 30, Nappanee, Indiana 46550

ONE OF THE GREATEST pleasures of being the Midwest RV test family for TL is that once or twice a year we have the privilege of using an all-new, truly fine recreational vehicle. Our recent test of the new London Aire fifth-wheel trailer and matching Centurion tow vehicle was that kind of experience. Although we always try to be conservative with our praise of any RV we examine and we look very hard sometimes to find shortcomings we can criticize (after all, the perfect RV hasn't been built yet), it is hard for us to describe our feelings about the London Aire without using superlatives.

We judged the silver-gray coach by Newmar Industries to be the most beautiful fifth-wheel trailer we've ever seen and it was the smoothest-towing fiver we've ever used.

Now, wait a minute before you take those words to heart and run out to buy a new London Aire. Remember, we said that the perfect RV hasn't been built yet

and despite its beauty and its roadability, the London Aire is, like all other RVs, an imperfect product. We'll explain why a little later, but first we want to dwell on its strong points.

Newmar Industries of Nappanee, Indiana, developed the London Aire line of fifth-wheels and travel trailers over a three-year period, culminating in an introduction of the first models to the nation's RV dealers at the annual industry trade show in Louisville last December. Newmar has long been regarded as one of the leading producers of quality trailers for full-time RVers and company executives viewed the London Aire line as primarily a continuation of Newmar's commitment to well-built, livable products. Their aim was to offer their customers a series of trailers with all of the livability benefits of their highly regarded Kountry Aire line, but featuring aluminum-frame construction, a dramatically

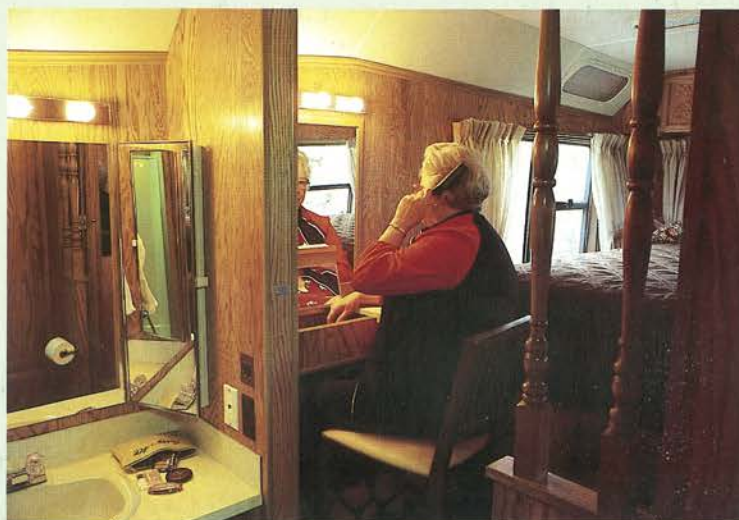
TL Tests: **LONDON AIRE** *Fifth-Wheel*

The *silver giant*, towed by Ford's Centurion, averaged 8.7 mpg and created excitement on and off the road.

by Don Wright



Curbside galley offers many overhead cabinets and lots of under-galley storage space (above). One outstanding feature of the trailer is a make-up table in the bedroom's dressing area.



aerodynamic shape, a new suspension system and an eye-catching exterior appearance. The London Aire units unveiled in Louisville generated a great deal of excitement among RV dealers, but that excitement was nothing compared to the interest we saw in peoples' eyes when we towed a 32-foot fiver through parts of Indiana and Ohio in April.

During our test trip, we discovered we could not stop anywhere without being barraged by questions from curious consumers. Interestingly enough, when we told them the trailer cost \$25,000 and that together, the coach and tow-er retailed around \$47,700, no one seemed surprised.

The distinctive shape of the silver-gray unit was accented by black belt lines and stripes and heavily tinted radius windows added to the smooth appearance. The Ford tow vehicle, built by Centurion (L & D Manufacturing Company) of Sturgis, Michigan, was painted to match and its passenger section was decorated with a black vinyl landau cover that added to the overall attractiveness of the rig. Front and rear windows of the trailer were covered by special lock-down awnings that fit flush with the unit's exterior skin. There was not a wind-catching protuberance anywhere on the coach; even the painted-to-match air-conditioner was placed at mid-point in the shelter of the overhead cab section. Aerodynamically, it was one of the best designed fifth-wheels built.

The roadability of the rig was simply outstanding. How much of that was due to the aerodynamics, how much to the power and size of the Centurion and how much to the all-new Acra-Trac suspension system, we couldn't judge. We suspected a combination of all those factors resulted in the London Aire's being the most stable, smoothest towing fifth-wheel we've ever used. March-like winds hit northern Indiana the day we picked up the rig, but the trailer breezed through the strong air currents as if there were no crosswinds at all. A rather large Class A motorhome that we ran with the London Aire for several miles was blown all over the road while the fiver held to its path effortlessly.

The test trip marked the first time we'd used the new Acra-Trac suspension system and although we don't claim to be experts on such things, in our judgment the coil-spring system furnished the trailer with improved stability on both sharp curves and over rough terrain. The Acra-Trac system incorporated maintenance-free, self-aligning rubber bushings in its mountings and the coils enabled each side of the system to operate independently, countering vehicle sway during cornering situations and smoothing the ride over rough surfaces. Acra-Trac was developed by Moore's, Incorporated, of Elkhart, Indiana, and the company claims the independently sprung characteristics of the system also eliminate tire skip and hop during panic stop situations.

The Centurion tow vehicle was essentially a redecorated version of the Land Cruiser that has been built on chopped van chassis for the last few years. It was powered by Ford's 460-cid V-8 engine and a 4.10-1 rear axle ratio. To the chassis (the same kind used for mini motorhomes) was added a fiberglass cab extension, fiberglass truck sidewalls and fenders and a 14-gauge steel truck bed. The interior was furnished with cranberry-tone high-back captain's chairs and a flip lounge; bay windows; padded carpeting; velour drapes, sun visors and headliner; a Cobra CB radio; a Panasonic AM/FM radio with cassette player and four speakers, and a special engine cover console with drink holders. For towing, the truck was equipped with a Hellstar fifth-wheel hitch.

As we emphasized in an earlier TL article about the Centurion, the tow-er need not be equipped with such a large engine in order to perform satisfactorily; indeed, the 460-cid engine is due to be phased out of production in the coming months. But the silver-gray Centurion handled the new London Aire trailer with an ease that was unexpected. Also, from earlier tests, we had come to expect very poor fuel economy from the overpowered Centurion, but that expectation did not materialize during the London Aire test. Instead of using gasoline at the expected rate of about six mpg, the test rig achieved an unbelievable 8.7 mpg during a 400-mile run. That economy, more than anything else, forced us to conclude that the aerodynamic shape of the trailer was practical as well as beautiful.

The trailer was, indeed, a very comfortable, livable product—especially for full-time RVers. But we felt strongly that the tone of the interior did not measure up to the sleek, modern exterior. Furnishings were, for the most part, the same as have been offered for years in the Kountry Aire line. Don't interpret that statement to mean we're critical of the way Kountry Aire RVs

SPECIFICATIONS 32' London Aire

Weight (dry)	6,950 lbs.
Weight (full water, propane)	7,318 lbs.
Hitch weight	1,860 lbs.
GVWR	9,000 lbs.
Axle ratings	7,000 lbs.
Tires	8.55-15
Length	33'5"
Width	95"
Road height	10'6"
Interior height	
Aft	78"
Forward	54"
Dressing area	71"
Water cap	40 gal.
Propane cap	60 lb.
Holding tank cap	35 gal.
Sink/shower holding tank	35 gal.
Air-conditioner	13,500 BTU
Furnace	30,000 BTU
Refrigerator	10 cu. ft.
Base price	\$24,674
Sugg. retail, test unit	\$25,000

are furnished; we're not.

We felt, however, that the unique shape and color of the London Aire promised a type of interior atmosphere that Newmar Industries didn't deliver; we didn't feel that the oak cabinetry and paneling, the conservative upholstery and carpeting and the house-type draperies fit the modern image that the outside design of the trailer seemed bent on conveying.

The trailer featured a very practical layout: a flip lounge in the rear, facing forward with a self-storing extension table in front of it; a snack bar on the curbside just inside the entry door; a curbside galley with lots of overhead cabinets and plenty of under-galley storage space opposite a bank of wardrobes and closets; a walk-through bathroom just forward of the galley and an overhead bedroom with a stand-up dressing area. Livability, as we mentioned, was excellent—except for a few minor shortcomings. The flip lounge was uncomfortably hard, roughly upholstered and provided sub-standard sleeping space when the \$25,000 price tag of the trailer was considered; a full-size sofa that converted into a double bed should have been furnished. Lighting throughout the coach was, to be generous about it, subdued; brighter lighting was needed throughout, but especially in the bathroom and dressing room, where frosted 25-watt bulbs were totally inadequate. The bed lacked a headboard and it needed one badly because the only way we could prevent our pillows from falling on the floor while we slept was to jam the head of the bed against the trailer's front window.

Newmar-built RVs are famous for their interior storage space and our test trailer lived up to that image. There were overhead cabinets, single closets, double wardrobes, drawers, compartments and shelving everywhere. The closets were outfitted with interior lights and the doors closed securely with magnetic catches. The walk-through bathroom was quite spacious, well laid out and practically furnished; a hinged door leading into the galley and a folding accordion door at the bedroom provided excellent privacy. Other good features included a make-up table in the bedroom's dressing area; a living room stereo sound system with a cassette tape player, a digital clock and an automatic programmer with a built-in memory; a digital clock with an alarm in the bedroom; a five-level lighted linen closet in the bathroom; a six-level slideout pantry; a Jensen weather center that included a humidity gauge, a barometer and a thermometer.

London Aire fifth-wheel trailers are available in lengths of 31, 32, 35 and, eventually, 40 feet. Travel trailers are produced in lengths of 27, 29, 31 and 33 feet. **TL**

(Newmar Industries, PO Box 30, Napanee, Indiana 46550.)



The London Aire Fifth-wheel (top) is the sleekest and smoothest-towing fiver our test family has ever encountered. The interior offers exceptional quantity and quality.



London Aire

An extraordinary recreational vehicle created for the rest-of-your-life enjoyment.

**Inspired aerodynamic design; lightweight, welded
aluminum superstructure; warm and livable interiors**

Your future is here. Your extra-special, recreational sanctuary is London Aire. The livable, natural wood interior has a delightful kitchen, commendable bath and comfortable living and sleeping areas. All have been created to make recreational or retirement time a constant enjoyment.

The London Aire is aerodynamically designed for beauty and less wind resistance. It has a totally enclosed aluminum exterior and has Acra-Trac™ suspension with uniform wheel loading, increased stability and a superior ride.

Add all the comfort and construction features of the London Aire together and you have an extraordinary vehicle to enjoy for years.

WRITE FOR COMPLETE INFORMATION

London Aire, Newmar Industries, Inc.,
P.O. Box 30, Dept. 26, Nappanee, Indiana 46550

