

**A WORLD AHEAD**

***Kountry Lite***



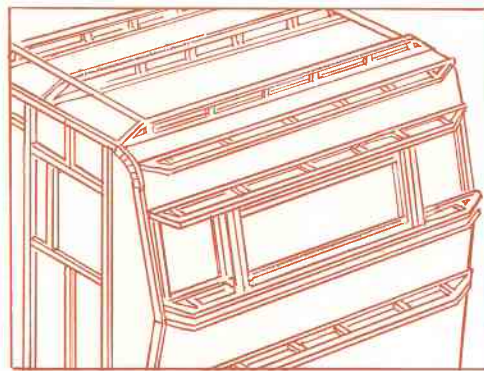
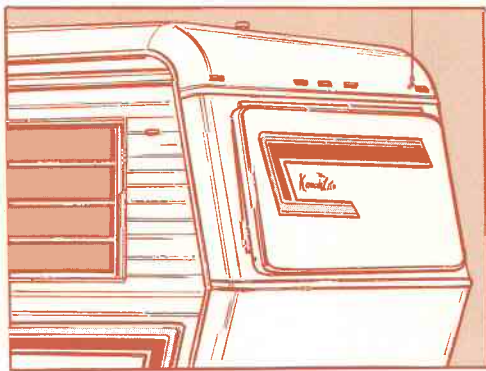
**IN TIME AND DESIGN**

1983



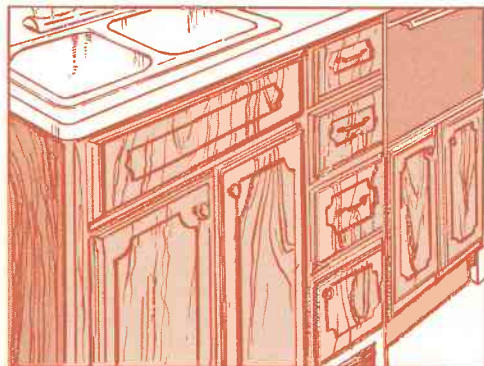
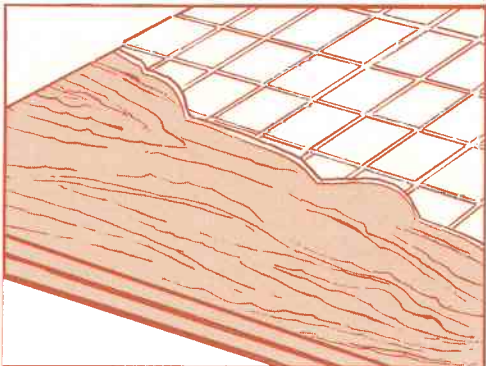
# WHAT *Kountry Lite* MEANS FOR YOU...

Pre-painted aluminum skin with radius exterior corners. Fiberglass cap front and rear. Hehr jalousie windows. All running lights. Attractive persimmon color striping accents on white. Coaches are fully insulated top, sides and floor. You'll be nice and cozy.



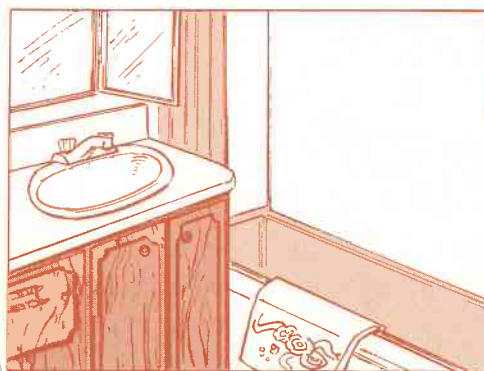
The new Kountry Lite coach is light, but not a lightweight... there's a difference! Exterior construction features 1 1/2" aluminum sidewall construction with 16" centers. Aluminum truss style roof rafters. A 5" tubular steel frame with structural cross members on units up to 30' in length. Six-inch steel tubular frame with structural cross members on units 30' and over.

Lite but solid! That's the whole idea behind the engineering and construction of your Kountry Lite coach. For example, all coaches feature double half-inch laminated floor construction for strength and rigidity. All floors are insulated and covered with a combination of Armstrong vinyl floor covering and plush nylon carpeting.



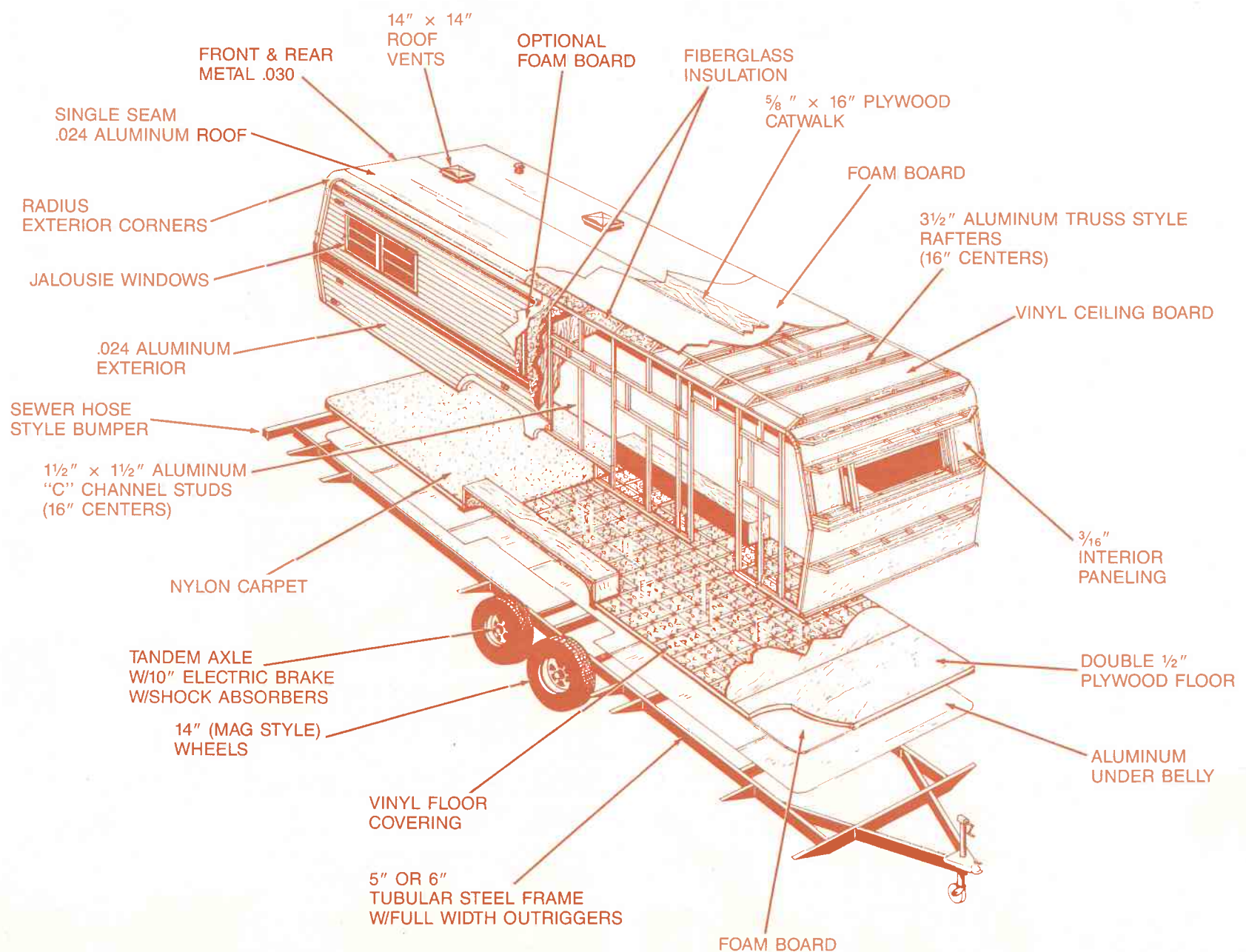
This large double stainless steel sink with plenty of storage below make camping chores a clean-up breeze. You have room to move around in your Kountry Lite kitchen!

You'll find everything you need to cook up a gourmet delight right at your fingertips with the convenient slide-out pantry. It's standard in every Kountry Lite kitchen.



Your Kountry Lite coach has all the comforts and amenities of home, such as this lovely extra size bathroom with 41" tub, shower, vanity, and rich hard-wood veneer cabinetry.

## A TRADITION OF QUALITY CRAFTSMANSHIP...





BEAUTIFULLY ENGINEERED...



DINETTE WITH BACK BAR. Plenty of room for your table settings with additional room behind for serving dishes. Another nice idea from Kountry Lite.

ROOM FOR LIVING. Graciously entertain guests, relax, or stretch out and snooze. This beautiful room setting invites all of that and more. Various color combinations and decors available, your choice.



S = Std  
A = Available  
NA = Not Available

	22 CBTT	22 RBD-TT	25 CB-TT	25 CBD-TT	25 RBB-TT	27 CB-TT	27 RB-TT	29 CB-TT	29 RB-TT
Appliances									
4 Burner Range w/oven	S	S	S	S	S	S	S	S	S
Single door refrigerator	S	S	S	S	S	S	S	S	S
Double door refrigerator	A	A	A	A	A	A	A	A	A
Gas Water Heater (gal)	6	6	6	6	6	6	6	6	6
Gas/Elec. Water Heater 6 gal	A	A	A	A	A	A	A	A	A
8 gal. Gas Water Heater	A	A	A	A	A	A	A	A	A
Electronic Ignit. Furnace	S	S	S	S	S	S	S	S	S
Larger Furnace	A	A	A	A	A	A	A	A	A
Wired for Air Conditioner	S	S	S	S	S	S	S	S	S
Air Conditioner	A	A	A	A	A	A	A	A	A
Wired for Stereo	S	S	S	S	S	S	S	S	S
Stereo w/cassette	A	A	A	A	A	A	A	A	A
Wired for T V Antenna	A	A	A	A	A	A	A	A	A
Rotating T V Antenna	A	A	A	A	A	A	A	A	A
Range Hood w/light & fan	S	S	S	S	S	S	S	S	S
Power Roof Vent	A	A	A	A	A	A	A	A	A
Double Gas Bottles #20	S	S	S	S	S	S	S	S	S
Larger Gas Bottles #30	A	A	A	A	A	A	A	A	A
Plumbing Features									
Demand Water System	S	S	S	S	S	S	S	S	S
City Water Hookup	S	S	S	S	S	S	S	S	S
Double Stainless Steel Sink	S	S	S	S	S	S	S	S	S
Large Lavatory Sink	S	S	S	S	S	S	S	S	S
Fresh Water Holding Tank	30 gal	30 gal	30 gal	30 gal	30 gal	30 gal	30 gal	30 gal	30 gal
Grey Waste Holding Tank	25 gal	25 gal	25 gal	25 gal	25 gal	35 gal	35 gal	35 gal	35 gal
Sewage Waste Holding Tank	25 gal	25 gal	25 gal	25 gal	25 gal	35 gal	35 gal	35 gal	35 gal
Tub/Shower Combination	41"	41"	41"	38"	41"	41"	41"	41"	41"
Monitor Panel	A	A	A	A	A	A	A	A	A
Interior Extra Comfort									
Vinyl Floor Covering	S	S	S	S	S	S	S	S	S
Carpeted Bedroom Area	NA	NA	S	S	NA	S	S	S	S
Carpeted per requested area	A	A	A	A	A	A	A	A	A
Carpet Padding	A	A	A	A	A	A	A	A	A
Sofa	NA	NA	NA	NA	NA	NA	NA	NA	NA
Sofa Bed	S	S	S	NA	S	S	S	S	S
Twin Bed	NA	NA	S	NA	NA	S	S	S	S
Double Bed	NA	NA	A	S	NA	A	NA	A	A
Bunk—Cabinet	A	A	A	A	A	A	A	A	A
Bunk—Stationary	NA	NA	A	A	S	A	A	A	A
Bed Spreads	A	A	A	A	A	A	A	A	A
Sink Covers	A	A	A	A	A	A	A	A	A
Luxury Exterior Features									
Frame size	5"	5"	5"	5"	5"	5"	5"	5"	5"
10" Electric Brake axles	S	S	S	S	S	S	S	S	S
Shock absorbers	S	S	S	S	S	S	S	S	S
14" Road Style Wheels	S	S	S	S	S	S	S	S	S
F78 x 14 Load Range C Tires	S	S	S	S	S	S	S	S	S
Exter or Recept	S	S	S	S	S	S	S	S	S
Dead Bolt Lock	A	A	A	A	A	A	A	A	A
Porch Light	S	S	S	S	S	S	S	S	S
Grab Handle	S	S	S	S	S	S	S	S	S
Bumper Cover	A	A	A	A	A	A	A	A	A
Power Jack	A	A	A	A	A	A	A	A	A
Stabilizer Jacks	A	A	A	A	A	A	A	A	A
Front Window w/Travel Awning	S	S	S	S	S	S	S	S	S
Rear Travel Awning	A	NA	A	A	NA	A	NA	A	NA
Spare Tire & Wheel	A	A	A	A	A	A	A	A	A
Spare Tire Carrier	A	A	A	A	A	A	A	A	A
Rack & Ladder	A	A	A	A	A	A	A	A	A
Roll-out Awning	A	A	A	A	A	A	A	A	A
Bay (Picture) Window	A	A	A	A	A	A	A	A	A
R5 Fiberglass insulation	S	S	S	S	S	S	S	S	S
Foam Core Insulation Sidewalls	A	A	A	A	A	A	A	A	A
12 Volt Battery w/case	S	S	S	S	S	S	S	S	S

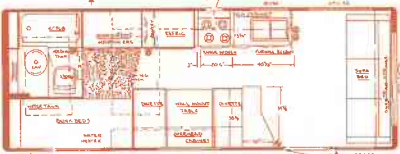
TRAVEL TRAILERS



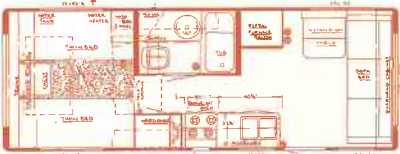
22' Center Bath Travel Trailer  
Dry Weight - 3600 lbs. Hitch Weight - 400 lbs. Overall Length - 21' 11"



22' Rear Bath Dinette Travel Trailer  
Dry Weight - 3600 lbs. Hitch Weight - 400 lbs. Overall Length - 21' 11"



25' Rear Bath Bunks Travel Trailer  
Dry Weight - 4000 lbs. Hitch Weight - 450 lbs. Overall Length - 24' 11"



25' Center Bath Travel Trailer  
Dry Weight - 4000 lbs. Hitch Weight - 450 lbs. Overall Length - 24' 11"



25' Center Bath Dinette Travel Trailer  
Dry Weight - 4000 lbs. Hitch Weight - 450 lbs. Overall Length - 24' 11"



27' Center Bath Travel Trailer  
Dry Weight - 4400 lbs. Hitch Weight - 500 lbs. Overall Length - 26' 11"



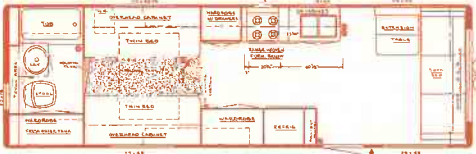
27' Rear Bath Travel Trailer  
Dry Weight - 4400 lbs. Hitch Weight - 500 lbs. Overall Length - 26' 11"



29' Center Bath Dinette Travel Trailer  
Dry Weight - 4800 lbs. Hitch Weight - 500 lbs. Overall Length - 28' 11"



29' Center Bath Travel Trailer  
Dry Weight - 4800 lbs. Hitch Weight - 500 lbs. Overall Length - 28' 11"



29' Rear Bath Travel Trailer  
Dry Weight - 4800 lbs. Hitch Weight - 500 lbs. Overall Length - 28' 11"



31' Center Bath Dinette Travel Trailer  
Dry Weight - 5200 lbs. Hitch Weight - 500 lbs. Overall Length - 30' 11"



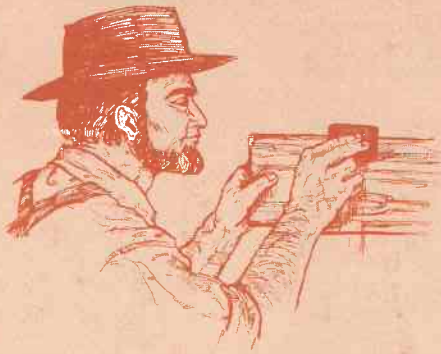
31' Rear Bath Dinette Travel Trailer  
Dry Weight - 5200 lbs. Hitch Weight - 500 lbs. Overall Length - 30' 11"

All weights shown are approximate.  
All Kountry Lite features and options are listed in the brochure.  
Each Kountry Lite meets all requirements of the Recreational Vehicle Industry Association (RVIA) Standard Institute; and state and local regulations.  
Some features shown in the photos are not standard.  
and specifications are subject to change without notice.









# Kountry Lite

## **NEWMAR QUALITY IS YOUR REASON TO BUY... HERE ARE TWENTY REASONS WHY YOU WILL VALUE YOUR DECISION.**

1. Rugged tubular steel frame with cross members and outriggers.
2. All four wheels equipped with 10" electric brake axles and shocks.
3. Rust-resistant, insulated, galvanized wheel wells.
4. Double 1/2" plywood floor. (1" of solid wood floor)
5. Aluminum underbelly.
6. Large dual holding tanks.
7. Large fresh water tank with demand water system and standard city water hook up.
8. A.B.S. drain, waste, and vent lines for leakproof joints.
9. All copper "code" approval electrical wiring.
10. Aluminum super structure - (1 1/2" x 1 1/2" Aluminum C Channel studs 16" Centers) (3 1/2" Aluminum truss style rafters, 16" Centers)
11. Fiberglass insulation with insulated vapor foam board in ceiling and floors.
12. Smooth Aerodynamically designed radius exterior corners.
13. Single seam aluminum roof.
14. .024 White aluminum exterior metal with color keyed accent stripping.
15. Fully opening jalousie style windows.
16. High quality interior plywoods with vinyl covering.
17. Cabinets and drawers are glued and screwed for strength.
18. High quality linoleum, and carpets are standard.
19. Quality name brand fixtures and appliances used throughout.
20. Built to RVIA approved standards and codes for your complete satisfaction and comfort.