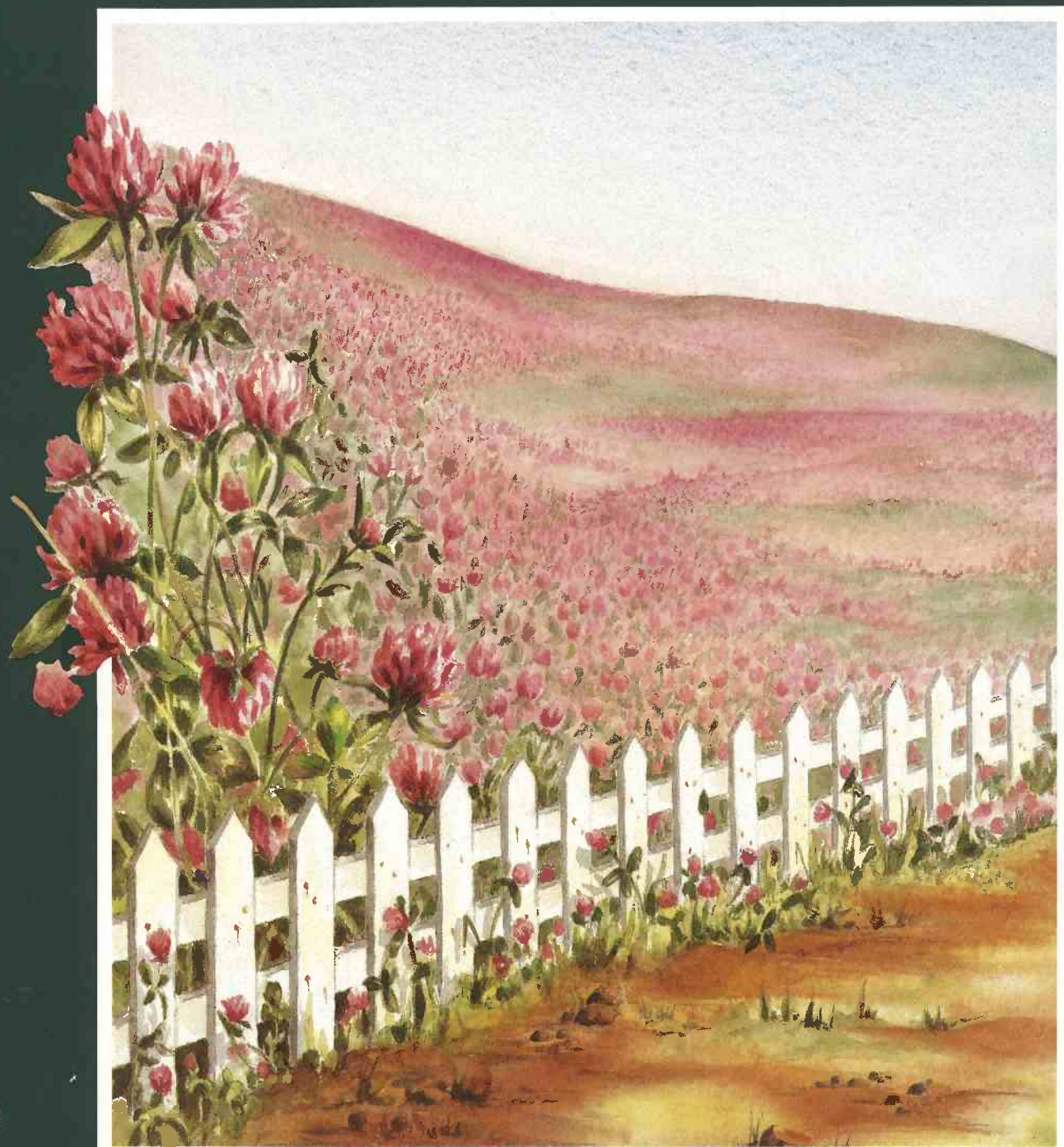


# Kountry Style

A publication of Newmar Corporation

Volume 1

September 1984



*This magazine has been published  
in celebration of the American way of life,  
fine art and craftsmanship.*

To our readers:

In presenting the 1985 product line of Newmar Corporation, it has been the intention of this publisher to also bring to our readers a magazine depicting American talent, integrity and pride.

On the following pages, we have combined the fine art of watercolor, exacting still photography, and a distinctly American literary style — all to better focus on the single most important art form displayed here: the Newmar Corporation recreational vehicles.

It is our sincere wish that you, the reader, enjoy this publication as much as we have enjoyed preparing it for you.

## CONTENTS

Volume 1, September 1984

# Kountry Style

## Kountry Lite

Towables 2

## Kountry Aire

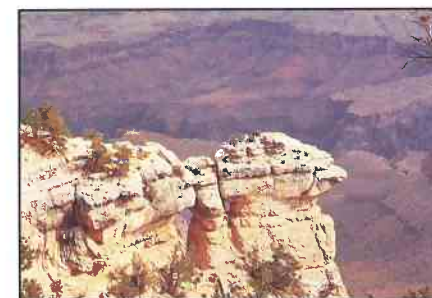
Towables 6

Motorized 10

## London Aire

Towables 14

Motorized 18



The Grand Canyon — where Mother Nature gives a spectacular performance daily! This is but one of the “natural art forms” you’ll see as you travel America with us.

Special Features 22

Construction 23

Be Our Guest! 24

Kountry Style is published annually by Newmar Corporation. Editorial and executive offices are located in Nappanee, Indiana 46550.

Copyright©1984 Newmar Corporation. All rights reserved. Copyright contents may not be reproduced in any manner without prior written permission of Kountry Style.

## Kountry Style

*Established 1984*

Editor-in-Chief: Mahlon Miller

Associate Editor: Krisanne Anglin

Advertising Director: Donald Rink

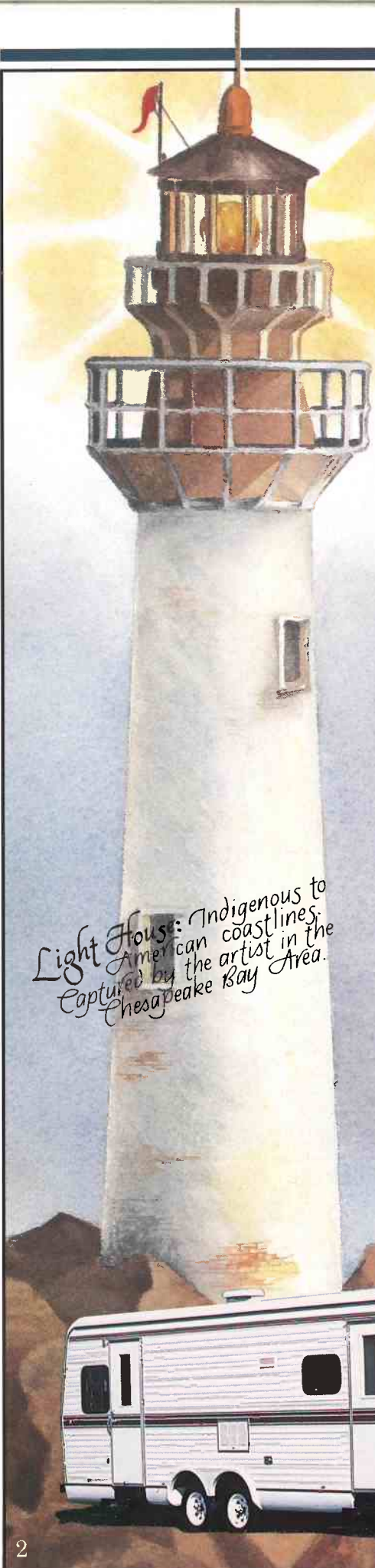
Watercolorist: Betty Brant

Photographer: Gary Mills

Stylist: Bonnie Hoffer

Publishers: Hendershot & Associates

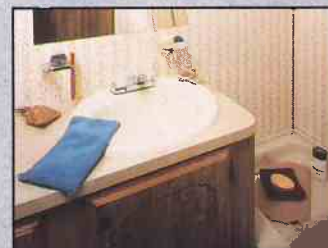




Light House: Indigenous to American coastlines, captured by the artist in the Chesapeake Bay Area.



All the comforts of home — in your Kountry Lite "land yacht."



After a long day on the road, you can treat yourself to a bubble bath!

## Kountry Lite

*The first of the three Newmar Corporation lines presented here is the Kountry Lite line. This line consists of two towable units: the Kountry Lite Travel Trailer and the Kountry Lite Fifth Wheel. Both are fine examples of expert workmanship at affordable prices.*



Cook up something special for "stowaways" in the fully-equipped kitchen of the Fifth Wheel.

## Lite House

A lighthouse can be different things to different people.

It's a welcome beacon to weary travellers. It's a picturesque point to landlubbers. To some, it's even a home.

Our "lite house" is all these things — and more.

"Lite House" — because its aluminum structure makes this house-on-wheels very lightweight.

Both the Kountry Lite Travel Trailer and Fifth Wheel are "lite houses." And because they're lightweight, they'll lower your fuel consumption when towing. Radius caps and corners and the aerodynamic design also tend to increase your m.p.g.



As you travel this enormous land of ours, be sure you visit our beaches and coastal areas. They're some of the prettiest anywhere!



Lots of room to stow your gear in Kountry Lite's exterior storage compartments.



Decorative wire mesh accents living room cabinet doors in the Kountry Lite line.





Built-in nightstands give extra storage space to the Travel Trailers.



Stretch out in the roomy Fifth Wheel bedroom.



This convenient dinette in the Kountry Lite line not only converts to an extra bed, but has easy-access storage areas underneath.

## This lite house shines — inside and out!

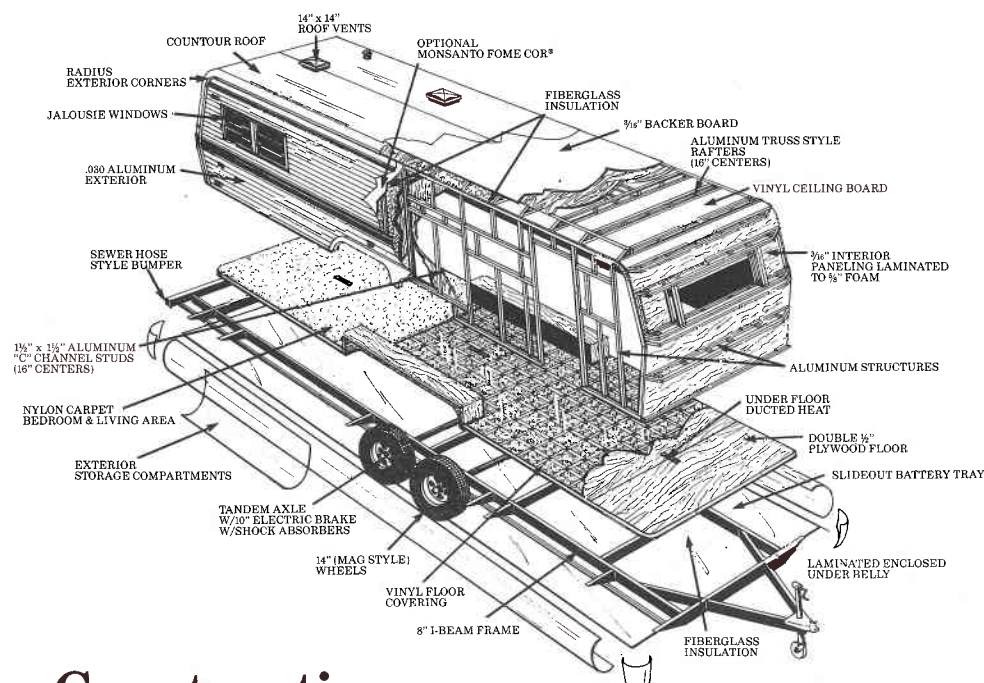
All new for Kountry Lite in '85 is the dramatic exterior striping. And the inside has changed just as dramatically! Pecan paneling, padded carpeting, designer-selected fabrics and colors in the living room. Tie-back draperies and valances with textured roller shades. Beautifully routed door lines on the cabinetry, and decorative headboards in the bedroom. So much for your money, you'll wonder how Kountry Lite remains Newmar Corporation's "economical line."

If you've been floundering in a "sea of RV's" — wondering just which one to buy — search no longer!

**THE KOUNTRY LITE SWITCH IS ON!**



## Construction



## Standard and Optional Features

S = Standard  
O = Optional

### A. AIR CONDITIONING, GAS & HEATING

Electronic Ignit. Furnace 25M (20'-24' Units)	1	S
Electronic Ignit. Furnace 32M (25'-30' Units)	2	S
Electronic Ignit. Furnace 35M (31'-35' Units)	3	S
Electronic Ignit. Furnace 41M (36'-40' Units)	4	S
Next Size Larger Furnace in Lieu of Standard	5	O
2-20# Steel LP Gas Bottles w/Manual Regulator	6	S
2-30# Steel LP Gas Bottles w/Automatic Regulator	7	O
2-40# Steel LP Gas Bottles w/Automatic Regulator	8	O
Rosan® LP Leak Detector	9	O
Wire for Air Conditioner (1 only)	10	S
Wire for Extra Air Conditioner	11	O
13.5 Coleman® Air Conditioner	12	O
Heat Strip for Air Conditioner	13	O
Under Floor Ducted Heat	14	S

### APPLIANCES

RV106 Sibir® Refrigerator 2-Way	1	S
RV108 Sibir® Refrigerator 2-Way	2	O
RV110 Sibir® Refrigerator 2-Way	3	O
Domestic® Refrigerator in Lieu of Std. (comp. size)	4	O
Model 763 3-Way AES	5	O
Model 1303 3-Way AES	6	O
Range Hood w/Light & Fan	7	S
18" 4-Burner Range w/Oven, Top Pilot	8	S
Bi-fold Range Cover	9	O
Microwave Oven	10	O
Microwave Prep 16"H x 21 1/2"W x 13 1/2"D	11	O
Double Stainless Steel Sink	12	S
Laminated Sink Cover (1 only)	13	S
Double Handle Mixing Faucet	14	S
6 Gallon Gas Water Heater	15	S
6 Gal. Gas Water Heater w/Elec. Ign. in Lieu of Std.	16	O
10 Gal. Gas/Electric Water Heater in Lieu of Std.	17	O
Large Lavatory Sink	18	S
Tub/Shower Combination	19	S
Full Fiberglass Bathtub and Door	20	O
Portable Vacuum System	21	O
Washer & Dryer Prep (incl. plumbing, elect. recept)	22	O
Washer & Dryer	23	O

### C. AWNINGS, DOORS, VENTS & WINDOWS

36" x 42" Picture Window at Dinette	1	S
Square Torque Regular Glass Window (Hehr®)	2	S
22'-32" TT & FW Radius Tinted Torque Safety Glass	3	O
(Must Option in New Jersey) (Hehr®)		
33'-40" TT & FW Radius Tinted Torque Safety Glass	4	O
(Must Option in New Jersey) (Hehr®)		
36" x 48" Picture Window - Radius Only (each)	5	O
48" x 36" Picture Window - Radius Only (each)	6	O
48" x 48" Picture Window - Radius Only (each)	7	O
48" x 36" Picture Window - Square (each)	8	O
36" x 30" Picture Window - Radius Only (each)	9	O
Power Roof Vent in Bath Area w/Wall Switch	10	S
Non-Power Roof Vent in A/C Location	11	S
Roof Vent	12	O
Power Roof Vent	13	O
26" Entrance Door w/Screen	14	S
Front Travel Awning (Travel Trailers)	15	S
Rear Travel Awning	16	O
Carter® Side Awning	17	O
Center Support for Side Awning	18	O
Front Window & Awning (Fifth Wheels)	19	O
Grab Handle	20	S
Vinyl Folding Door	21	S
Wood Folding Door in Lieu of Vinyl Door	22	O
Extra Vinyl Folding Door	23	O
Dead Bolt Lock (each)	24	O
Door Bell	25	O

### D. CABINETS & FURNITURE

Dinette w/Pedestal Table (Except in 27' RB & 31' CB TT; 23' FB, 26' FB, 35' CBWT, 35' WTRF, 35' WTRF, 40' CB, 40' CBWT, 40' WTRF, 40' WTRF FW)	1	S
Twin or Double Bed	2	S
Free Standing Sleeper Sofa (see floor plans)	3	S
Wall Mount Table (27' RB & 31' CB TT; 23' FB, 26' FB, 35' CBWT, 35' WTRF, 35' WTRF, 40' CB, 40' CBWT, 40' WTRF, 40' WTRF FW)	4	S
Cabinet Bunk w/Poly Foam Mattress, 32"	5	O
Stationary Bunk w/Poly Foam Mattress, 32"	6	O
Queen Bed	7	O
Fitted Sheets for Twin, Double & Queen Beds	8	O
Clothes Hamper (CB & FB Models only)	9	S
Medicine Cabinet	10	S
Night Stand (1 for TB; 2 for DBL)	11	S
Decorative Headboards	12	S
Rocker Chair	13	O
Pedestal Chair	14	O

Access Doors under Dinette	15	O
Hi-Lo Table	16	O
Counter Top Extension	17	O
Extra Overhead Cabinet (each)	18	O
Omit Dinette and Install Table Height Bar	19	O
Extra Wardrobe at Door Side w/Angle Lower	20	O
TV Cabinet (RB & CB FW only) (#131)		
Omit Front Door and Install Wardrobe (WT FW only) (#151)	21	O
Wall Mount Table (extra)	22	O
Drop Cabinet Top to Bar Level (32" WTRF)	23	O
Party Package - Omit Door Side Loungette.	24	O
Add 2 Pedestal Chairs, Small Pedestal Table & a 36" x 48" Bay Window (26' FBTL)		

### E. ELECTRICAL & LIGHTING EQUIPMENT

Wire for Stereo	1	S
AM/FM Stereo w/Cassette, Clock & 4 Speakers	2	O
TV Antenna w/2 Jacks	3	O
Hook Up for Cable TV	4	O
Radio Antenna w/4 Speakers	5	O
1 - 110v GFI Recept Interior	6	S
Exterior Recept	7	S
Porch Light w/Inside Switch	8	S
1 - 80 AMP Battery	9	S
1 - 85 AMP Deep Cycle Battery	10	O
40 AMP Converter w/Charger	11	S
30 AMP Service	12	S
50 AMP Service	13	S
Fire Extinguisher 5 BC	14	S
Fire Extinguisher 10 BC	15	S
Smoke Detector	16	S
Monitor Panel	17	O
Battery Clock	18	O
Exterior Security Lights (4)	19	O
Intercom	20	O
Wire for Telephone	21	O

### INTERIORS

Vinyl Floor Covering	1	S
Carpet w/Pad in Bedroom & Living Room	2	S
Carpet w/Pad (per ft.)	3	O
3/16" Pecan Paneling	4	S
Wainscoting in Living Room	5	S
Wood Grain Paneling in Lieu of Wainscoting	6	O
12" Raised Roof Option (Fifth Wheels)	7	O
Decorative Panels in Bath	8	S
Light Color Paneling in Bedroom	9	S
Textured Roller Shades w/Correlating	10	S
The Back Draperies & Matching Valances		
Kountry Aire Hercules Fabric Package (5-4 & 5-5) (Includes Upholstery, Drapes in Living Area & Carpet)	11	O
Bedspread Queen	12	O
Bedspread Double	13	O
Bedspread Twins	14	O

### WATER SYSTEMS

Air Accumulator Tank	1	S
Demand Water System	2	S
City Water Hook-Up	3	S
35 Gallon Grey Water Tank	4	S
35 Gallon Sewage Waste Holding Tank	5	S
Fresh Water Tanks		
Travel Trailers:		
22 RBD 27 Gallon	6	S
25 CBD, 27 RB 31 Gallon	7	S
29 CBD, 31 CB, 31 CBD, 33 RBD, 35 CBD, 35 RBD 56 Gallon	8	S
Fifth Wheels:		
23 FBD, 23 RBD, 26 FBTL, 26 RBD, 29 RBD	9	S
29 WTD, 29 FBTK 31 Gallon		
35 WTRF, 35 WRFD, 40 WTRF, 40 WRFD 35 Gal.	10	S
32 RBD, 32 WTRF, 32 WTD, 35 FBTK, 35 RBD, 40 FBTK 45 Gallon	11	S
35 CBWT, 35 WTRF, 35 WTD, 40 CB, 40 CBWT, 40 RBD, 40 WTRF, 40 WTD 56 Gallon	12	S

### EXTERIOR

Exterior Storage Compartments (Doors, no Slide Outs)	1	S
Bumper Cover	2	O
Roof Rack & Split Ladder	3	O
Roof Storage Pod 21 cu. ft.	4	O
Roof Storage Pod 10 cu. ft.	5	O

### I. RUNNING GEAR & CONSTRUCTION

Aluminum Structure (16" Centers)	1	S
Frame size 8" I-Beam	2	S
10" Electric Brake	3	S
Shock Absorbers	4	S
14" Wheels	5	S
15" Wheel (each)	6	O
F78 x 14 Load Range C Tires	7	S
8.55 Load Range C - White Walls (each)	8	O
Spare Tire & Wheel	9	O
Spare Tire Carrier	10	O
Spare Tire Cover	11	O
Fiberglass Insulation Sidewalls & Roof	12	S
Laminated 5/8" Foam Insulation Sidewalls & Roof	13	S
Enclosed Underbelly w/Laminated 5/8" Foam	14	S
Fome-Cor® Insulation Exterior Sidewalls & Roof	15	O
Double Entrance Step	16	S
Double 1/2" Plywood Floor	17	S
Power Hitch Jack (Travel Trailers)	18	O
Power Hitch Jacks (Fifth Wheels)	19	O
48" or 54" Fifth Wheel Hitch Plate & Bracket	20	O
Install Fifth Wheel Hitch	21	O
Stabilizer Jacks (set of 2)	22	O
Wire for Power Jack	23	O
Mor-Ryde® Suspension	24	O

### J. MISCELLANEOUS

Customer Pick Up	1	O
------------------	---	---

## Decor Packages



Rose Bouquet Honey & Spice Midnight Blue.





Midwesterners say they'll put their sunsets up against anybody's. Come take a look, and decide!



All-new diagonally accented cabinetry is featured in the 1985 Kountry Aire line. And the appointments you see here are standard.



Here's a close-up of the optional power slide-out that gives extra room to the Kountry Aire Fifth Wheel.

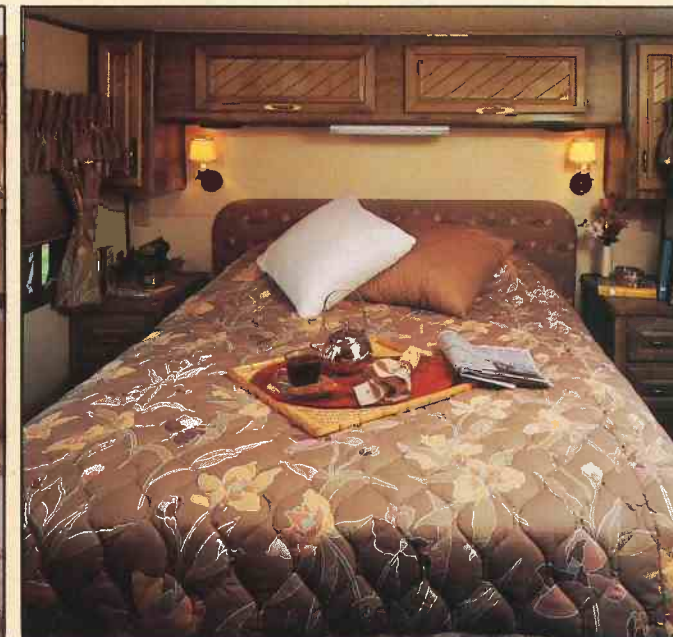
## Kountry Aire

*Newmar Corporation's mid-line vehicles are anything but middle-of-the-road! If you've had a chance to compare Kountry Aire to the competition, you'll recognize some important differences. If you haven't compared, we urge you to do so!*

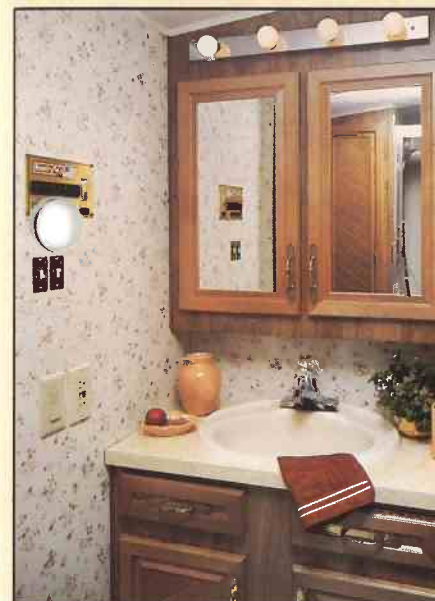
*Sweet Corn: Indigenous to the American Midwest. Captured by the artist in central Iowa.*



Executive Suite — this is the ultimate in space and style: the Kountry Aire Fifth Wheel with optional power slide-out.



Color-coordinated soft shades and padded headboard make this Fifth Wheel bedroom extra comfortable.



## Kountry Kitchen

Traveling — at its very best — involves all the senses: sight, sound, smell, touch and taste! And no matter when you travel, there's always something good cooking all across America.

**Take advantage of seasonal foods by taking a complete kitchen — Kountry Aire!**

Feast your family on Maine lobster or New England clam chowder, thanks to Kountry Aire's 22", 4-burner range.

Keep Florida citrus or Wisconsin cheese and sausage fresh in the 3-way Dometic refrigerator. Or freeze wild strawberries and huckleberries found in the north woods.

Spend the round-up season in the Southwest learning the secrets of Texas chili and "real" barbeque.

There's plenty of storage space in your Kountry Kitchen, so you can bring home things like Idaho potatoes and Michigan apples.

Clean-up is easy in a Kountry Aire kitchen thanks to the double stainless steel sink and the single handle mixing faucet with spray hose.

Best of all, the rest of the Kountry Aire vehicles are just as complete and comfortable as the kitchens! Take a closer look, and whet your appetite!

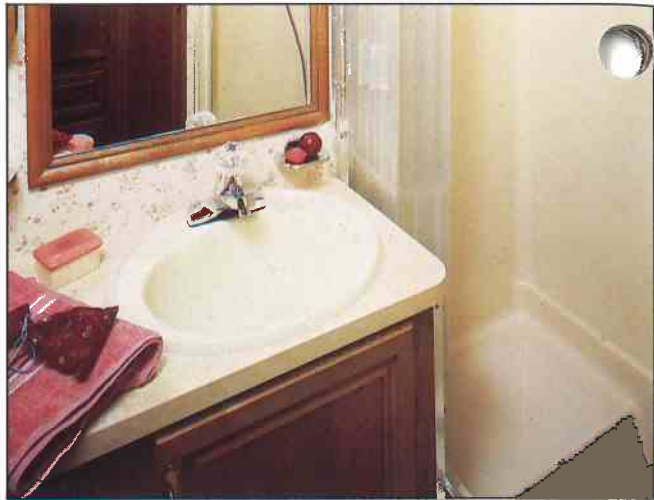
**TRAVELIN' IN THE KOUNTRY AIRE — NATURALLY!**







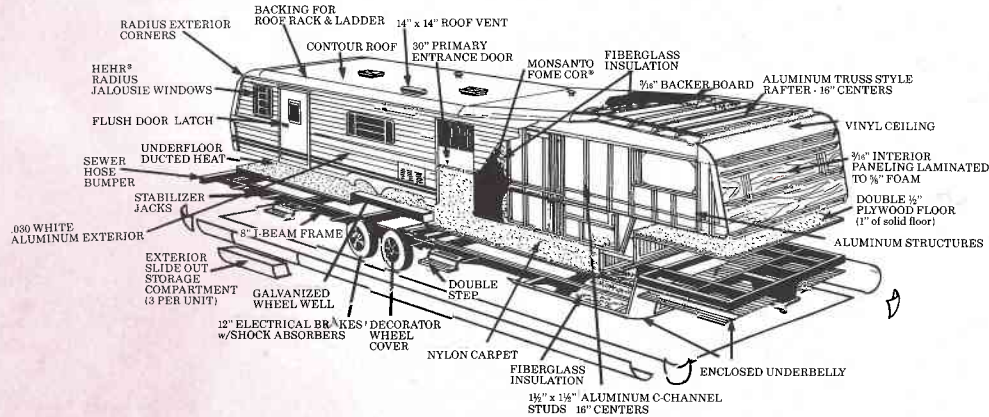
Roseberry is one of our freshest decor packages, shown here in the Travel Trailer.



Shower or bathe. It's your choice, in the Travel Trailer.



Some cabinets in the Travel Trailer have the decorative etched glass effect.



## Construction

Red Flower: Indigenous to the American Dairy Country. Captured by the artist in northern Wisconsin.

## Standard and Optional Features

S = Standard  
O = Optional

### A. AIR CONDITIONING, GAS & HEATING

Electronic Ignit. Furnace 25M (20' - 24' Units)	1	S
Electronic Ignit. Furnace 32M (25' - 30' Units)	2	S
Electronic Ignit. Furnace 35M (31' - 35' Units)	3	S
Electronic Ignit. Furnace 41M (36' - 40' Units)	4	S
Next Size Larger Furnace in Lieu of Standard	5	O
Wire for Air Conditioner (1 only)	6	S
13.5 Coleman® Air Conditioner	7	O
Heat Strip for Air Conditioner	8	O
Wire for Extra Air Conditioner	9	O
2 - 30# Steel LP Gas Bottles w/ Automatic Reg.	10	S
2 - 40# LP Gas Bottles w/ Auto Reg. in Lieu of 2 - 30#	11	O
LP See Level Gauges (set of 2)	12	O
Rosan® LP Leak Detector	13	O
Gas Bottle Light	14	S
Gas Bottle Cover	15	S
Under Floor Ducted Heat	16	S

### B. APPLIANCES

1303 Dometic® Refrigerator - 3-Way AES	1	S
Sibir® 2-Way Refrig. in Lieu of Std. (comparable size)	2	O
Range Hood w/ Light & Fan	3	S
22" 4-Burner Range w/ Oven, Top Pilot & Black Glass Door	4	S
Double Stainless Steel Sink	5	S
Laminated Sink Cover (1 only)	6	S
Single Handle Mixing Faucet w/ Spray Hose	7	S
Single Lever Lavatory & Shower Faucet	8	S
Ice Maker	9	O
Nutone® Food Center (Blender & Mixer)	10	O
Portable Vacuum System	11	O
10 Gallon Gas/Electric Water Heater in Lieu of Standard Gas w/ Electric	12	O
6 Gal. Atwood® Gas Water Heater w/ Elect. Ignition	13	S
Water Heater Bypass Kit	14	O
Water Purifier	15	O
Large Lavatory Sink	16	S
Tub/Shower Combination	17	S
Bi-Fold Range Cover	18	S
Microwave Prep 16"H x 21 1/2"W x 13 1/2"D	19	S
Spacemaker Microwave Oven JVM-48	20	O
Microwave Oven 16"H x 21 1/2"W x 13 1/2"D	21	O
Washer & Dryer Prep (includes plumbing, electric recept, shelf)	22	O
Washer & Dryer	23	O
Portable Gas Grill	24	O

### C. AWNINGS, DOORS, VENTS & WINDOWS

Radius Tinted Torque Safety Glass Windows (Hehr®)	1	S
36" x 48" Picture Window at Dinette	2	S
Opera Window 12" x 48"	3	O
36" x 48" Picture Window - Radius Only (each)	4	O
48" x 36" Picture Window - Radius Only (each)	5	O
48" x 36" Picture Window - Radius Only (each)	6	O
48" x 48" Picture Window - Radius Only (each)	7	O
Power Roof Vent in Bath Area w/ Wall Switch	8	S
Non-Power Roof Vent in A/C Location	9	S
Roof Vent	10	O
Power Roof Vent	11	O
30" Primary Door w/ Flush Mounted Latch & Dead Bolt Lock	12	S
26" Secondary Door (where applicable)	13	S
Front Travel Awning (Travel Trailers)	14	S
Front Window & Awning (Fifth Wheels)	15	O
Rear Travel Awning	16	O
Carter® Side Awning	17	O
Center Support for Side Awning	18	O
Grab Handle	19	S
Woven Folding Door	20	S
Wood Folding Door in Lieu of Woven Folding Door	21	O
Extra Woven Folding Door	22	O
Door Bell	23	O

### D. CABINETS & FURNITURE

Twin or Double Bed	1	S
Free Standing Sleeper Sofa (see floor plans)	2	S
Cabinet Bunk w/ Poly Foam Mattress 32"	3	O
Stationary Bunk w/ Poly Foam Mattress 32"	4	O
Queen Bed w/ Sheets	5	O
Rocker Chair	6	O
Pedestal Chair	7	O
Wood Folding Chair	8	O
Wall Mount Table (27' RB & 31' CB TT; 23' FB, 26' FB, 35' CBWT, 35' WTRF, 35' WTRF, 40' CB, 40' CBWT, 40' WTRF, 40' WTRF FW)	9	S
Wall Mount Table (Extra)	10	O
Hi-Lo Table (Extra)	11	O
Hi-Lo Table in Lieu of Wall Table	12	O
Counter Top Extension	13	O
Butcher Block Counter Top	14	O
Clothes Hamper (CB & FB Models only)	15	S
Medicine Cabinet	16	S
Extra Overhead Cabinet (each)	17	O
Book Case Front Cabinet	18	O
Book Case Front Angle Cabinet w/ TV Shelf	19	O
Extra Wardrobe at Door Side w/ Angle Lower	20	O
TV Cabinet (RB & CB FW Only) (#131)	21	O
Omit Front Door & Install Wardrobe (WT FW Only) (#151)	22	O
Drop Cabinet Top to Bar Level (32' WTRF)	23	O
Diagonal Cabinet Door Lines	24	S
Silverware Drawer	25	S
Dinette w/ Pedestal Table (Except 27' RB & 31' CB TT; 23' FB, 26' FB, 35' CBWT, 35' WTRF, 35' WTRF, 40' CB, 40' CBWT, 40' WTRF, 40' WTRF FW)	26	O
Omit Dinette and Install Table Height Bar	27	S
Access Doors under Dinette	28	S
Decorative Headboards	29	S

### E. ELECTRICAL & LIGHTING EQUIPMENT

AM/FM Stereo w/ Cassette, Clock & 4 Speakers	1	S
TV Antenna w/ 2 Jacks	2	S
Color TV AC/DC	3	O
Hook Up for Cable TV	4	O
Monitor Panel	5	S
Intercom System	6	O
Automatic Wardrobe Lights	7	S
Florescent Lighting	8	S
Swag Light	9	S
1 - 110v GFI Interior Recept	10	S
Exterior Recept	11	O
Exterior Security Lights (4)	12	O
Porch Light w/ Inside Switch	13	S
1 - 80 AMP Battery	14	S
1 - 85 AMP Deep Cycle Battery	15	O
40 AMP Converter w/ Charger	16	S
30 AMP Service	17	S
50 AMP Service	18	O
Fire Extinguisher 5 BC	19	S
Smoke Detector	20	S
Battery Clock	21	S
Wire for Telephone	22	O
4.0 k.w. Onan® Generator	23	O
6.5 k.w. Onan® Generator	24	O
Generator Prep (Wire & Door Only)	25	O

### F. INTERIORS

Carpet w/ Pad	1	S
Vinyl Floor Covering in Lieu of Carpet	2	O
3/16" Pecan Paneling	3	S
Wainscoting in Living Room	4	S
Wood Grain Paneling in Lieu of Wainscoting	5	O
12" Raised Roof Option (Fifth Wheels)	6	O
Decorative Panels in Bath	7	S
Light Colored Panel in Bedroom	8	S
Soft Shade Blinds w/ Correlating Tie Back	9	S
Draperies & Shirred Valances	10	S
Bedspreads	11	S
Fitted Sheets for Regular Beds	12	S

### G. WATER SYSTEMS

Air Accumulator Tank	1	S
Demand Water System	2	S
City Water Hook-Up	3	S
35 Gallon Grey Water Tank	4	S
35 Gallon Sewage Waste Holding Tank	5	S
Fresh Water Tanks		
Travel Trailers:		
25 CBD, 27 RB 31 Gallon	6	S
29 CBD, 31 CB, 31 CBD, 33 CBD, 33 RBD, 35 CBD, 35 RBD 56 Gallon	7	S
Fifth Wheels:		
23 RBD, 29 RBD, 29 WTD, 29 FBKD 31 Gallon	8	S
35 WTRF, 35 WTRF, 40 WTRF, 40 WTRF 35 Gallon	9	S
32 RBD, 32 WTRF, 32 WTD, 35 FBKD, 35 RBD, 40 FBKD 45 Gallon	10	S
35 CBWT, 35 WTRF, 35 WTD, 40 CB, 40 CBWT, 40 RBD, 40 WTRF, 40 WTD 56 Gallon	11	S

### H. EXTERIOR

Bumper Cover	1	S
Exterior Storage Slide Out Drawers	2	S
Roof Rack & Split Ladder	3	O
Roof Storage Pod 21 cu. ft.	4	O
Roof Storage Pod 10 cu. ft.	5	O

### I. RUNNING GEAR & CONSTRUCTION

Aluminum Structure (16" Center)	1	S
Wood Structure in Lieu of Aluminum (Fifth Wheels)	2	O
Frame Size 8" I-Beam	3	O
12" Electric Brake	4	S
Mor-Ryde® Suspension	5	O
Shock Absorbers	6	S
15" Wheels	7	S
8.55 Load Range C White Walls	8	S
Fome-Cor® Insulation Exterior Sidewalls & Roof	9	S
Fiberglass Insulation in Sidewalls, Floor & Roof	10	S
Laminated 5/8" Foam Insulation Sidewalls & Roof	11	S
Enclosed Underbelly w/ Laminated 5/8" Foam	12	S
Double 1/2" Plywood Floor	13	S
Spare Tire Carrier, Wheel & Cover	14	S
Chrome Styled Wheel Covers	15	S
Stabilizer Jacks	16	S
Extra Set of Stabilizer Jacks	17	O
Power Hitch Jack (Travel Trailers)	18	O
Power Hitch Jacks (Fifth Wheels)	19	O
48" or 54" Fifth Wheel Hitch Plate & Bracket	20	O
Install Fifth Wheel Hitch	21	O

### J. MISCELLANEOUS

Customer Pick Up	1	O
74" Power Slide Out w/ Lighting & Recepts	2	O
94" Power Slide Out w/ Lighting & Recepts	3	O
Hurricane Straps (3)	4	O

### K. STORM WINDOWS

25 CB Storm Window Set	1	O
27 RB Storm Window Set	2	O
29 CB Storm Window Set	3	O
31 CB Storm Window Set	4	O
33 CB Storm Window Set	5	O
35 CB Storm Window Set	6	O
529 FBKD Storm Window Set	7	O
532 WTD Storm Window Set	8	O
535 FBKD Storm Window Set	9	O
540 CB Storm Window Set	10	O
Storm for Slide Outs	11	O





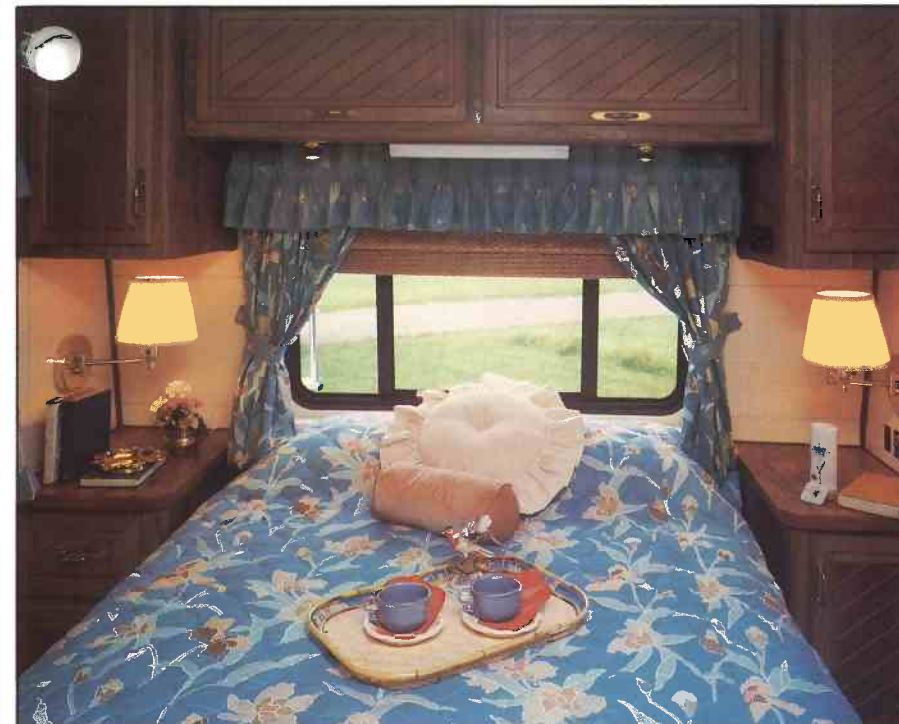
Brand new for 1985 — the Kountry Aire Class A Motorhome! It's one of our most artistic achievements to date.

## Kountry Kousins

There's nothing like the brand new Kountry Aire Motorhome — except its Kountry Kousin: The Kountry Aire Mini!



*Forget-Me-Nots: Indigenous to the American countryside. Captured by the artist in the Tennessee Valley.*



Decor packages in the Kountry Aire line are especially appealing. Pictured here is "biscuit and blue" in the Class A.



Slide out drawers in the new Motorhome give an unbelievable amount of exterior storage space. (The portable gas grill is also standard with this unit!)



Bluegrass Country — good music, good food, good people. Experience it in Kountry Aire!



Dual fuel conversion is standard on all Kountry Aire motorized vehicles (not available in California).



Closed-circuit rear view monitor (standard) makes maneuvering easier in the Class A.

Both are a delight to own, thanks to the expert craftsmanship and artistic design that goes into every Kountry Aire manufactured.

### Pretty as a picture!

Fabrics designed by artists and selected by interior decorators. Cabinetry crafted by the finest artisans. Sleek, aerodynamically engineered exteriors from top designers. And more...

### Because pretty is as pretty does.

Both Kountry Aire motorized RVs are real performers. Fully equipped with automatic transmission, power steering and brakes, Fome-Cor® insulation in the exterior, and aluminum structure, these Kountry Kousins are as good as they look!

Picture yourself owning one of the beautiful Kountry Kousins!

**TRAVELIN' IN THE KOUNTRY AIRE... NATURALLY!**







The rear bath/bedroom model of the Kountry Aire Mini is one of our most popular.



Room for the whole gang in this spacious Mini.



## Standard and Optional Features

S = Standard  
O = Optional

### A. AIR CONDITIONING, GAS & HEATING

Electronic Ignit. Furnace 25M (20'-24' Units)	1	S
Electronic Ignit. Furnace 32M (25'-30' Units)	2	S
Electronic Ignit. Furnace 35M (31'-35' Units)	3	S
Next Size Larger Furnace in Lieu of Standard	4	O
13.5 Coleman® Air Cond. in Living Room (Class A)	5	S
13.5 Coleman® Air Cond. in Bedroom (Class A)	6	S
Wire for Air Conditioner (1 only)	7	S
13.5 Coleman® Air Conditioner	8	O
Heat Strip for Air Conditioner	9	O
Wire for Extra Air Conditioner	10	O
Auxiliary Heater in Bedroom (Class A)	11	S
41 Gallon LP Gas Tank (Mini)	12	S
64 Gallon LP Gas Tank (Class A)	13	S
Defroster Fans (2) (Class A)	14	S
Under Floor Ducted Heat	15	S

### B. APPLIANCES

Ice Maker (Class A)	1	S
Ice Maker (Mini)	2	O
1303 Dometic® Refrigerator - 3-Way AES	3	S
Sibir® 2-Way Refrigerator in Lieu of Std. (compar. size)	4	O
Range Hood w/Light & Fan	5	S
22" 4-Burner Range w/Oven, Top Pilot & Black Glass Door	6	S
Double Stainless Steel Sink	7	S
Laminated Sink Cover (1 only)	8	S
Single Handle Mixing Faucet w/Spray Hose	9	S
Single Lever Lavatory & Shower Faucet	10	S
6 Gal. Atwood® Gas Water Heater w/Elect. Ignition	11	S
10 Gal. Gas/Elect. Water Heater in Lieu of Gas	12	O
Water Heater Bypass Kit	13	O
Water Purifier	14	O
Large Lavatory Sink	15	S
Tub/Shower Combination	16	S
Microwave Oven (Class A)	17	S
Microwave Prep (16"H x 21 1/2"W x 13 1/2"D) (Mini)	18	S
Microwave Oven (Mini)	19	O
Spacemaker Microwave Oven JVM 48 in Lieu of Std. (Class A)	20	O
Portable Vacuum System (Class A)	21	S
Portable Vacuum (Mini)	22	O
Gas Grill (Class A)	23	S
Portable Gas Grill (mini)	24	O
Nutone® Food Center (Blender & Mixer) (Class A)	25	S
Nutone® Food Center (Blender & Mixer) (Mini)	26	O
Bi-fold Range Cover	27	S

### C. AWNINGS, DOORS, VENTS & WINDOWS

Power Roof Vent in Bath Area w/Wall Switch	1	S
Roof Vent	2	O
Power Roof Vent	3	O
26" Entrance Door w/Flush Mounted Latch & Dead Bolt Lock	4	S
Grab Handle	5	S
Radius Tinted Slider Safety Glass Windows (Hehr®)	6	S
Driver Side Door (Class A)	7	S
Carter® Side Awning (Class A)	8	S
Center Support for Side Awning	9	O
Carter® Side Awning (Mini)	10	O
Exterior Window Shades (Class A)	11	S
36" x 48" Picture Window - Radius Only (each)	12	O
48" x 30" Picture Window - Radius Only (each)	13	O
48" x 36" Picture Window - Radius Only (each)	14	O
48" x 48" Picture Window - Radius Only (each)	15	O
Door Bell	16	O

### D. CABINETS & FURNITURE

Twin or Double Bed	1	S
Medicine Cabinet	2	S
Diagonal Cabinet Door Lines	3	S
Silverware Drawer	4	S
Dinette w/Pedestal Table & Picture Window	5	S
Access Doors under Dinette	6	S
Bar in Lieu of Dinette where applicable	7	O
Snack Table on Engine Cover	8	S
Decorative Headboards	9	S

### E. ELECTRICAL & LIGHTING EQUIPMENT

AM/FM Stereo w/Cassette, Clock & 4 Speakers (Mini)	1	S
CB AM/FM Stereo w/Cassette, Clock, 4 Speakers, 1 Headphone & Power Antenna (Class A)	2	S
CB Radio w/Antenna (Mini)	3	O
AM/FM Stereo w/Cassette, Clock & 2 Speakers (Bedroom Class A)	4	S
TV Antenna w/2 Jacks	5	S
Built-in Color TV AC/DC (Class A)	6	S
Color TV AC/DC (Mini)	7	O
Hook Up for Cable TV	8	O
Interior Courtesy Lights	9	S
Monitor Panel	10	S
Automatic Wardrobe Lights	11	S
Florescent Lighting	12	S
1 - 110v GFI Recept Interior	13	S
12v Inverter for Icemaker & 1 Recept (Class A)	14	S
Exterior Recept	15	S
Exterior Security Lights (4)	16	O
Porch Light w/Inside Switch	17	S
Remote Controlled Roof Spot Light (Class A)	18	S
Light Under Hood to Check Fluids (Class A)	19	S
Air Horns (Class A)	20	S
70 AMP Chassis Battery	21	S
1 - 80 AMP Battery (Mini)	22	S

1 - 85 AMP Deep Cycle Battery (Mini)	23	O
2 - 85 AMP Unit Batteries (Class A)	24	S
Battery Isolator	25	S
Auxiliary Start Switch (Class A)	26	S
6.5 k.w. Onan® Generator Set w/2 Start Switches (Class A)	27	S
Generator Prep - Wire & Door only (Mini)	28	S
4.0 k.w. Onan® Generator (Mini)	29	O
40 AMP Converter w/Charger	30	S
110 AMP Alternator (Class A)	31	S
30 AMP Service	32	S
50 AMP Service	33	O
Fire Extinguisher 5 BC	34	S
Fog Lights (Class A)	35	S
Single Automatic Electric Step (Mini)	36	S
Double Automatic Electric Step (Class A)	37	S
Smoke Detector	38	S
Closed Circuit Rear View Monitor (Class A)	39	S

### F. INTERIORS

Carpet w/Pad	1	S
3/16" Pecan Paneling	2	S
Wainscoting in Living Room	3	S
Wood Grain Paneling in Lieu of Wainscoting	4	O
Decorative Panels in Bath	5	S
Soft Shade Blinds w/Correlating Tie Back Draperies & Shirred Valances	6	S
Woven Wood Shades w/Shear Curtains & End Panels in Lieu of Soft Shade Blinds	7	O
Padded Automotive Style Vinyl Ceiling (Class A)	8	S
Cushioned Entrance Door Header	9	S
Bedsprads	10	S

### G. WATER SYSTEMS

Air Accumulator Tank	1	S
Demand Water System	2	S
City Water Hook-Up	3	S
Grey Water Tanks		
Mini Homes:		
24 RBRD, 26 RBRB, 26 RBB 26 Gallon	4	S
26 RBDB 36 Gallon	5	S
Class A's:		
33 CB, 35 CB 39 Gallon	6	S
Sewage Tanks		
Mini Homes:		
26 RBDB 26 Gallon	7	S
24 RBRD, 26 RBRD, 26 RBB 36 Gallon	8	S
Class A's:		
33 CB, 35 CB 55 Gallon	9	S
Fresh Water Tanks		
Mini Homes:		
24 RBRD, 26 RBRD, 26 RBDB, 26 RBB 32 Gallon	10	S
Class A's:		
33 CB, 35 CB 56 Gallon	11	S

### H. EXTERIOR

Exterior Mirrors w/Defrost (Class A)	1	S
Stainless Exterior Mirrors (Mini)	2	S
Roof Rack Ladder	3	S
Exterior Storage Slide Out Drawers	4	S
Stainless Steel Bumpers - Front & Rear (Class A)	5	S
Hitch for Towing Car w/Wire Connector (Class A)	6	S
Hitch for Towing Car w/Wire Connector (Mini)	7	O
Running Boards (Mini)	8	O
Roof Storage Pod 10 cu. ft.	9	O
Roof Storage Pod 21 cu. ft.	10	O

### I. RUNNING GEAR & CONSTRUCTION

Aluminum Structure (16" Centers)	1	S
Shock Absorbers	2	S
Fome-Cor® Insulation Exterior Sidewalls & Roof (Mini)	3	S
Fome-Cor® Insulation Exterior Roof (Class A)	4	S
Thermo-board Laminated to Exterior Metal - Sidewall (Class A)	5	S
Fiberglass Insulation Sidewalls, Floor & Roof	6	S
Laminated 5/8" Foam Insulation Sidewalls & Roof	7	S
Double 1/2" Plywood Floor	8	S
Spare Tire, Wheel & Carrier	9	S
Automatic Hydraulic Leveling Jacks (Class A)	10	S
Automatic Hydraulic Leveling Jacks (Mini)	11	O
4-Way Shocks on Front (Class A)	12	S
19.5 Polyester Tires (Class A)	13	S
Radial Tires (Mini)	14	O
Mud Flaps Front & Rear	15	S
Wire Style Wheel Covers	16	S
Dual Fuel Conversion (Except for California)	17	S

### J. CHASSIS FEATURES

Automatic Transmission	1	S
Power Steering	2	S
Power Brakes	3	S
Cruise Control	4	S
Custom Tilt Wheel (Class A)	5	S
High Output Heater/Air Conditioner	6	S
6-Way Power Driver Seat (Class A)	7	S
78 Gallon Gasoline Fuel Capacity (Class A)	8	S
41 Gallon Gasoline Fuel Capacity (Ford Mini)	9	S
36 Gallon Gasoline Fuel Capacity (Chevy Mini)	10	S

### K. MISCELLANEOUS

Automatic Rewind Cord (Class A)	1	S
Automatic Rewind Water Hose (Class A)	2	S
6-Way Power Passenger Seat (Class A)	4	O
Customer Pick Up	4	O





Castle: Indigenous to American dreams and legends. Captured by the artist's imagination.



This London Aire Travel Trailer is decorated in Sapphire Blue — one of many jewels suitable for a crown.

## London Aire

*London Aire — the superlative recreational vehicle — and Newmar Corporation's top-of-the-line. If it's luxury you're looking for, you'll find it here in the London Aire Travel Trailers, Fifth Wheels, Mini Homes and Motorhomes.*



Light and airy fabrics give a breezy atmosphere to this Fifth Wheel bedroom.

## Royally Appointed

Once upon a time, deserving kings spent their time — between battles — in absolutely splendid castles. They treated themselves to the very best of everything, because life was short and dragons were fierce!

Times have changed — but conditions really haven't. Kings (and their queens) still need a place to take refuge from day-to-day battles. And life's still too short (and "dragons too fierce") not to make your private time as luxurious as it can be.

**Indulge yourself in London Aire . . . because who's more deserving?**

Modern-day royalty can take to the road in "towable castles" — like the London Aire Travel Trailer or Fifth Wheel. And these kingly coaches are truly "royally appointed."

Kitchens to delight any gourmet with a 22", four-burner range, full oven and microwave — not to mention the Nutone Food Center, 3-way Dometic refrigerator and automatic ice-maker (all standard!). There's even a portable gas grill for barbeques outdoors!

Opulence abounds in posh interiors of real oak woodwork, sensuously thick carpeting, and designer fabrics and interior decors. And built-in color TV and cable hook-up are standards that raise standards in '85!

To be really appreciated, these fine recreational vehicles must be seen. See for yourself what's meant by "royal treatment!"

**HOW YOU TRAVEL IS AS IMPORTANT AS WHERE YOU TRAVEL . . .**



Yosemite, where a breath-taking sight meets you at every bend in the road. Just see for yourself!



Put yourself in perspective in the three-way mirror of the Fifth Wheel bath.







All London Aire recreational vehicles come equipped with a deluxe monitoring panel.



There are a wide variety of floorplans available in the London Aire Travel Trailer line. Shown here is a rear bath model.

Who says you can't take it with you? Our finest Fifth Wheel will convince you otherwise.

## Standard and Optional Features

S = Standard  
O = Optional

### A. AIR CONDITIONING, GAS & HEATING

- 1 Electronic Ignit. Furnace 25M (20'-24' Units)
- 2 Electronic Ignit. Furnace 32M (25'-30' Units)
- 3 Electronic Ignit. Furnace 35M (31'-35' Units)
- 4 Electronic Ignit. Furnace 41M (36'-40' Units)
- 5 Next Size Larger Furnace in Lieu of Standard
- 6 Air Conditioner 13.5 Coleman® (1 only)
- 7 13.5 Coleman® Air Conditioner
- 8 Heat Strip for Air Conditioner
- 9 Wire for Extra Air Conditioner
- 10 2-40# Steel LP Gas Bottles w/Automatic Regulator
- 11 Rosan® LP Leak Detector
- 12 LP See Level Gauges (set of 2)
- 13 Gas Bottle Light
- 14 Gas Bottle Cover
- 15 Under Floor Ducted Heat

### B. APPLIANCES

- 1 Ice Maker
- 2 Microwave
- 3 Space Maker Microwave Oven JVM 48 in Lieu of Std.
- 4 Nutone® Food Center (Blender & Mixer)
- 5 1303 Dometic® Refrigerator - 3-Way AES
- 6 Range Hood w/Light & Fan
- 7 22" 4-Burner Range w/Oven, Top Pilot & Black Glass Door
- 8 Bi-fold Range Cover
- 9 Double Stainless Steel Sink
- 10 Oak Sink Cover (2 each)
- 11 Single Handle Mixing Faucet w/Spray Hose
- 12 Single Lever Lavatory & Shower Faucet
- 13 6 Gallon Atwood® Gas Water Heater w/Elect. Ign.
- 14 6 Gallon Gas/Electric Water Heater in Lieu of Gas
- 15 Water Heater Bypass Kit
- 16 Large Lavatory Sink
- 17 Tub/Shower Combination
- 18 Adjustable Height Shower Head
- 19 Portable Vacuum System
- 20 Portable Gas Grill
- 21 Washer & Dryer Prep (plumbing, elect. recept & shelf)
- 22 Washer & Dryer
- 23 Water Purifier

### C. AWNINGS, DOORS, VENTS & WINDOWS

- 1 Power Roof Vent in Bath Area w/Wall Switch
- 2 Roof Vent
- 3 Power Roof Vent
- 4 30" Entrance Door w/Flush Mounted Latch & Dead Bolt Lock
- 5 Front & Rear Travel Awning (Travel Trailers)
- 6 Center Support for Side Awning
- 7 Front Window & Awning (Fifth Wheels)
- 8 Grab Handle
- 9 Radius Tinted Torque Safety Glass Windows (Hehr®)
- 10 Wood Folding Door
- 11 Door Bell
- 12 Rear Travel Awning (Fifth Wheels)
- 13 Carter® Side Awning

### D. CABINETS & FURNITURE

- 1 Twin or Double Bed
- 2 Free Standing Sleeper Sofa (see floor plans)
- 3 Queen Bed w/Sheet
- 4 Clothes Hamper (CB & FB Models only)
- 5 Medicine Cabinet
- 6 Silverware Drawer

- 7 Dinette w/Pedestal Table
- 8 Access Doors or Drawers under Dinette
- 9 Pedestal Chair
- 10 Hi-Lo Table
- 11 Decorative Headboards
- 12 Rocker Chair
- 13 Pedestal Chair (extra)
- 14 Wood Folding Chair
- 15 Hi-Lo Table (Extra)
- 16 Counter Top Extension
- 17 Extra Overhead Cabinet (each)
- 18 Omit Dinette and Install Table Height Bar
- 19 Wall Mount Table (extra)
- 20 L-Shaped Dinette in Lieu of Standard

### E. ELECTRICAL & LIGHTING EQUIPMENT

- 1 AM/FM Stereo w/Cassette, Clock & 4 Speakers
- 2 Color TV AC/DC
- 3 Hook Up for Cable TV
- 4 TV Antenna w/2 Jacks
- 5 Deluxe Monitor Panel
- 6 Automatic Wardrobe Lights
- 7 Fluorescent Lighting
- 8 Swag Light
- 9 1-110v GFI Recept Interior
- 10 Exterior Recept
- 11 Porch Light w/Inside Switch
- 12 1-85 AMP Deep Cycle Battery
- 13 40 AMP Converter w/Charger
- 14 30 AMP Service
- 15 Fire Extinguisher 10 BC
- 16 Smoke Detector
- 17 Intercom System
- 18 Exterior Security Lights (4)
- 19 50 AMP Service
- 20 4.0 k.w. Onan® Generator
- 21 6.5 k.w. Onan® Generator
- 22 Wire for Telephone
- 23 Generator Prep (Wire & Door only)

### F. INTERIORS

- 1 Carpet w/Pad
- 2 1/4" Oak Paneling
- 3 Light Paneling in Bedroom
- 4 Decorative Panels in Bath
- 5 Sheer Soft Shade w/Traverse Drapery and Matching Cornice Board Valance
- 6 Bedspreads
- 7 Fitted Sheets for Regular Beds
- 8 Vinyl Floor Covering in Lieu of Carpet

### G. WATER SYSTEMS

- 1 Air Accumulator Tank
- 2 Demand Water System
- 3 City Water Hook-Up
- 4 35 Gallon Grey Water Tank
- 5 35 Gallon Sewage Waste Holding Tank
- 6 Fresh Water Tanks
- 7 Travel Trailers:
- 8 25 CBD, 27 RB 31 Gallon
- 9 29 CBD, 31 CB, 31 CBD, 33 CBD, 33 RBD,
- 10 35 CBD, 35 RBD 56 Gallon
- 11 Fifth Wheels:
- 12 23 RBD, 29 RBD, 29 WTD, 29 FBKD 31 Gallon
- 13 35 WTRF, 35 WRFD, 40 WTRF, 40 WRFD 35 Gallon
- 14 32 RBD, 32 WTRF, 32 WTD, 35 FBKD, 35 RBD,
- 15 40 FBKD 45 Gallon
- 16 35 CBWT, 35 WTRF, 35 WTD, 40 CB, 40 CBWT,
- 17 40 RBD, 40 WTRF, 40 WTD 56 Gallon

### H. EXTERIOR

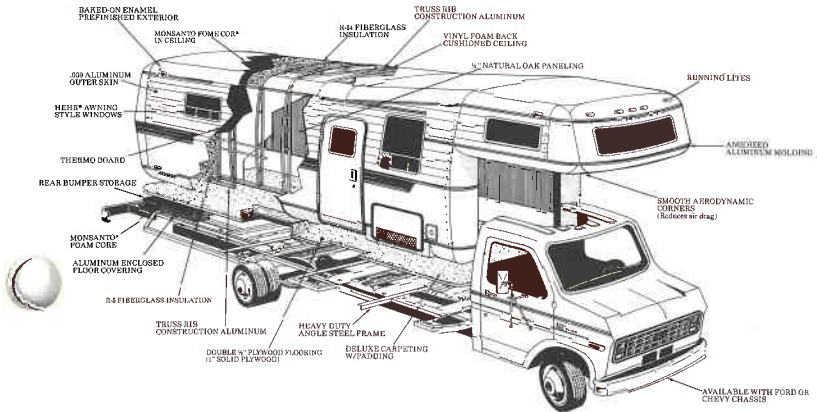
- 1 Chrome Auto Style Rear Bumper
- 2 Exterior Storage
- 3 Roof Rack & Split Ladder
- 4 Roof Storage Pod 10 cu. ft.

### I. RUNNING GEAR & CONSTRUCTION

- 1 Power Hitch Jack (Travel Trailers)
- 2 Power Hitch Jacks (Fifth Wheels)
- 3 48" or 54" Fifth Wheel Hitch Plate & Bracket
- 4 Install Fifth Wheel Hitch
- 5 Aluminum Structure
- 6 Double 6" Tube Frame (Except 32' Fifth Wheels)
- 7 12" Electric Brake
- 8 15" Aluminum Wheels
- 9 8.55 Load Range C White Walls
- 10 Fome-Cor® Insulation Exterior Sidewalls & Roof
- 11 Fiberglass Insulation in Sidewalls, Floor & Roof (R5)
- 12 Enclosed Underbelly w/Laminated 5/8" Foam
- 13 Double 1/2" Plywood Floor
- 14 Spare Tire, Wheel, Carrier & Cover
- 15 Stabilizer Jacks

### J. MISCELLANEOUS

- 1 Customer Pick Up

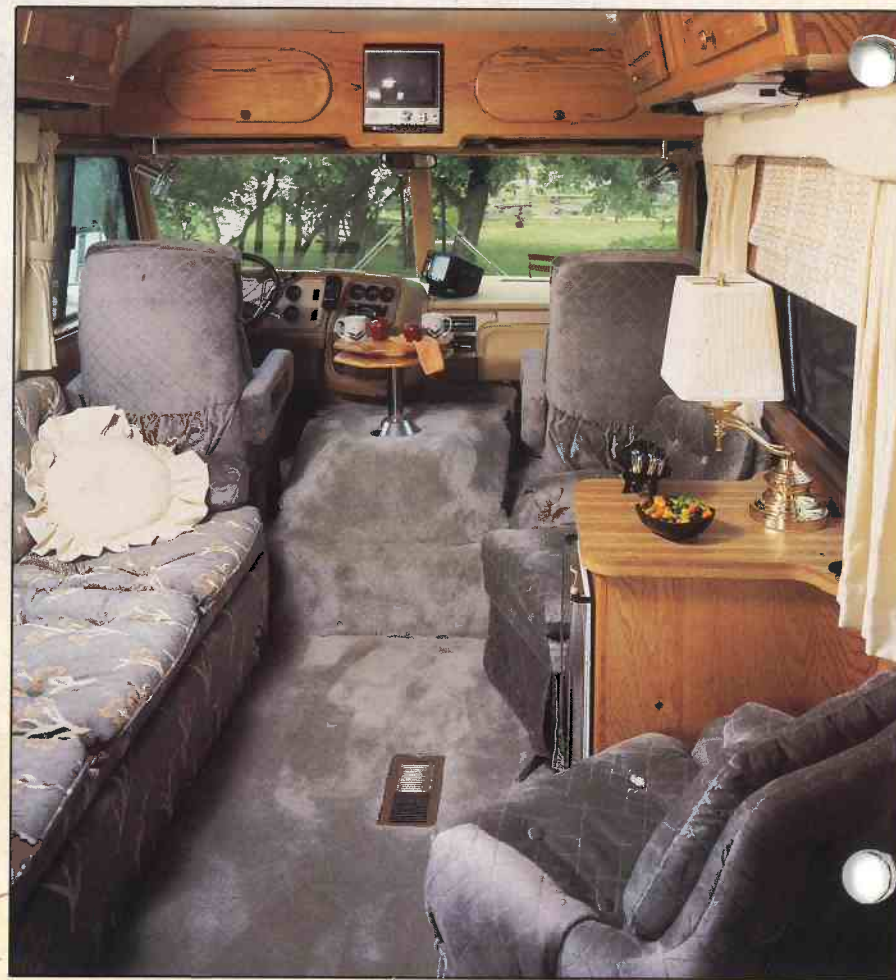


## Construction





*Bald Eagle: Indigenous to the American hand of the artist.*



Sleek, sumptuous, completely regal — the London Aire Class A for 1985.

## Crowning Achievement

American ingenuity and personal pride in one's work. These are the things that have made our Country foremost among nations.



Courtly cuisine can be prepared easily in this Class A kitchen complete with the finest appliances (all standard!).



See the sights in some of our big cities without worrying about accommodations. You're traveling first-class in London Aire motorized!



Modern-day throne for real road kings in the London Aire Motorhome.

They're the same things that have made Newmar Corporation foremost among recreational vehicle manufacturers.

**When imagination soars and work inspires pride, achievement reaches new heights.**

Newmar Corporation is proud to present their crowning achievement: the 1985 London Aire line. And nowhere is achievement more apparent than in the motorized vehicles.

Both the London Aire motorhome and mini home seem structurally akin to a powerful bird. Incredibly strong, and durable, yet lightweight enough to glide — thanks to aluminum construction. And a ride so quiet and smooth you'll feel as if you're actually in flight.

A level of luxury rare even in a regal domain.

London Aire has long been noted for pure excellence of design — inside and out. The

sleek dove grey exteriors draw admiring glances everywhere.

And the interiors are a decorator's dream. Standard features on all London Aire motorized vehicles include:

- Air Conditioning
- Automatic Icemaker
- Microwave Oven
- Built-in Color TV
- Portable Vacuum Systems
- Nutone Food Center
- Portable Gas Grill
- Automatic Electric Door Step

The list goes on. But these magnificent vehicles should be experienced to be appreciated. Take flight from the ordinary. Ride in Newmar Corporation's crowning achievement!

**HOW YOU TRAVEL IS AS IMPORTANT AS WHERE YOU TRAVEL...**

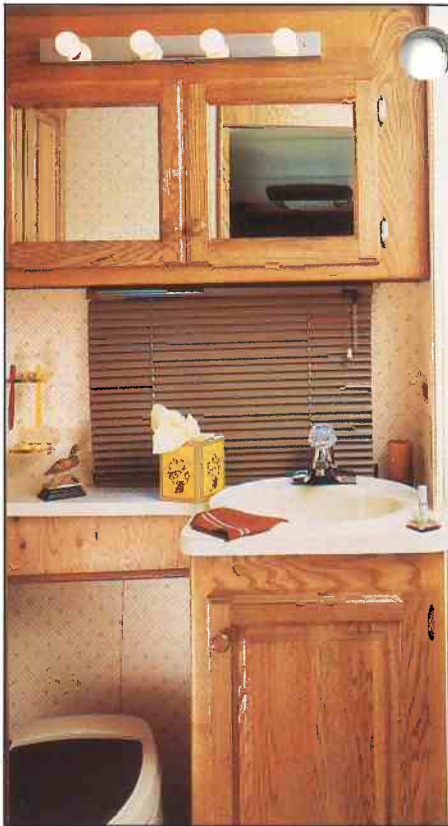


Ice on demand from the Dometic Icemaker — another great standard in our top-of-the-line.





Maximum luxury is yours in the London Aire Mini. This one is decorated in Plantation Cocoa.



Real oak cabinetry highlights all our London Aires. Shown here is the Mini Home vanity.



Believe it or not — a built-in color TV comes standard in the Class A.

## Standard and Optional Features

S = Standard  
O = Optional

### A. AIR CONDITIONING, GAS & HEATING

Electronic Ignit. Furnace 25M (20' - 24' Units)	1	S
Electronic Ignit. Furnace 32M (25' - 30' Units)	2	S
Electronic Ignit. Furnace 35M (31' - 35' Units)	3	S
Next Size Larger Furnace in Lieu of Standard	4	O
13.5 Coleman® Air Conditioner in Living Room	5	S
13.5 Coleman® Air Conditioner in Bed Room (Class A)	6	S
13.5 Coleman® Air Conditioner	7	O
Heat Strip for Air Conditioner	8	O
Wire for Extra Air Conditioner	9	O
Auxiliary Heater in Bedroom (Class A)	10	S
Gas Bottle Light	11	S
41 Gallon LP Gas Tank (Mini)	12	S
64 Gallon LP Gas Tank (Class A)	13	S
Defroster Fans (2) (Class A)	14	S
Under Floor Ducted Heat	15	S

### B. APPLIANCES

Ice Maker	1	S
1303 Dometic® Refrigerator - 3-Way AES	2	S
Range Hood w/Light & Fan	3	S
22" 4-Burner Range w/Oven, Top Pilot & Black Glass Door	4	S
Double Stainless Steel Sink	5	S
Oak Sink Covers (2 each)	6	S
Single Handle Mixing Faucet w/Spray Hose	7	S
Single Lever Lavatory & Shower Faucet	8	S
6 Gallon Atwood® Gas Water Heater w/Elect. Ignition	9	S
6 Gallon Gas/Electric Water Heater in Lieu of Std.	10	O
Water Heater Bypass Kit	11	O
Large Lavatory Sink	12	S
Tub/Shower Combination	13	S
Adjustable Height Shower Head	14	S
Microwave Oven	15	S
Space Maker Microwave Oven JVM in Lieu of Std.	16	O
Portable Vacuum System	17	S
Portable Gas Grill	18	S
Nutone® Food Center (Blender & Mixer)	19	S
Bi-Fold Range Cover	20	S
Water Purifier	21	O

### C. AWNINGS, DOORS, VENTS & WINDOWS

Power Roof Vent in Bath Area w/Wall Switch	1	S
Roof Vent	2	O
Power Roof Vent	3	O
30" Entrance Door w/Flush Mounted Latch & Dead Bolt Lock	4	S
Grab Handle	5	S
Radius Tinted Torque Safety Glass Windows (Hehr®)	6	S
Wood Folding Door	7	S
Carter® Side Awning	8	S
Exterior Window Shades (Class A)	9	S
Center Support for Side Awning	10	O
Door Bell	11	S

### D. CABINETS & FURNITURE

Twin or Double Bed	1	S
Medicine Cabinet	2	S
Silverware Drawer	3	S
Dinette w/Pedestal Table	4	S
Access Doors or Drawers under Dinette	5	S
Snack Table on Engine Cover	6	S
Decorative Headboards	7	S
Bar in Lieu of Dinette where Applicable	8	O
L-Shaped Dinette in Lieu of Standard	9	O

### E. ELECTRICAL & LIGHTING EQUIPMENT

AM/FM Stereo w/Cassette, Clock & 4 Speakers (Mini)	1	S
CB AM/FM Stereo w/Cassette, Clock, 4 Speakers & 1 Headphone & Power Antenna (Class A)	2	S
AM/FM Stereo w/Cassette, Clock & 2 Speakers (Bedroom Class A)	3	S
TV Antenna w/2 Jacks	4	S

Built-in Color TV AC/DC - 2 in CB Models (Class A)	5	S
Hook Up for Cable TV	6	S
Interior Courtesy Lights	7	S
Deluxe Monitor Panel	8	S
Automatic Wardrobe Lights	9	S
Florescent Lighting	10	S
1 - 110v GFI Interior Recept	11	S
12v Inverter for Ice Maker & 1 Recept (Class A)	12	S
Exterior Recept	13	S
Porch Light w/Inside Switch	14	S
Remote Controlled Roof Spot Light (Class A)	15	S
Light Under Hood to Check Fluids (Class A)	16	S
Air Horns (Class A)	17	S
70 AMP Chassis Battery	18	S
1 - 85 AMP Deep Cycle Battery (Mini)	19	S
2 - 85 AMP Deep Cycle Batteries (Class A)	20	S
Battery Isolator	21	S
Auxiliary Start Switch (Class A)	22	S
Generator Prep (Wire & Door Only) (Mini)	23	S
6.5 k.w. Onan® Generator Set w/2 Start Switches (Class A)	24	S
4.0 k.w. Onan® Generator (Mini)	25	O
40 AMP Converter w/Charger	26	S
110 AMP Alternator (Class A)	27	S
30 AMP Service	28	S
50 AMP Service	29	O
Fire Extinguisher 10 BC	30	S
Fog Lights (Class A)	31	S
Single Automatic Electric Step (Mini)	32	S
Double Automatic Electric Steps (Class A)	33	S
Smoke Detector	34	S
Closed Circuit Rear View Monitor (Class A)	35	S
Exterior Security Lights	36	O
CB Radio & Antenna (Mini)	37	O

### F. INTERIORS

Carpet w/Pad	1	S
1/4" Oak Paneling	2	S
Light Panel in Bedroom	3	S
Decorative Panels in Bath	4	S
Soft Shade Blinds w/Correlating Tie Back Draperies & Shirred Valance (Mini)	5	S
Wood Woven Shades w/Sheer Curtains & End Panels in Lieu of Soft Shades	6	O
Padded Automotive Style Vinyl Ceiling	7	S
Cushion Entrance Door Header	8	S
Bedsprings	9	S

### G. WATER SYSTEMS

Air Accumulator Tank	1	S
Demand Water System	2	S
City Water Hook-Up	3	S
Grey Water Tanks		
Mini Homes:		
24 RBRD, 26 RBRD, 26 RBDB 26 Gallon	4	S
26 RBB 36 Gallon	5	S
Class A's:		
33 CB, 35 CB 39 Gallon	6	S
Sewage Tanks		
Mini Homes:		
24 RBRD 26 Gallon	7	S
24 RBRD, 26 RBRD, 26 RBB 36 Gallon	8	S
Class A's		
33 CB, 35 CB 55 Gallon	9	S
Fresh Water Tanks		
Mini Homes:		
24 RBRD, 26 RBRD, 26 RBDB, 26 RBB 32 Gallon	10	S
Class A's:		
33 CB, 35 CB 56 Gallon	11	S

### H. EXTERIOR

Exterior Mirrors w/Defrost (Class A)	1	S
Stainless Exterior Mirrors (Mini)	2	S
Roof Rack Ladder	3	S
Exterior Storage w/Slide Out Drawers (Class A)	4	S
Chrome Auto-Style Read Bumper (Mini)	5	S
Stainless Steel Bumpers - Front & Rear (Class A)	6	S
Hitch for Towing Car w/Wire Connector (Class A)	7	S
Hitch for Towing Car w/Wire Connector (Mini)	8	O
Roof Storage Pods	9	O
Running Boards (Mini)	10	S

### I. RUNNING GEAR & CONSTRUCTION

Aluminum Structure	1	S
Shock Absorbers	2	S
Fome-Cor® Insulation Exterior Sidewalls & Roof	3	S
Fiberglass Insulation in Sidewalls, Floor & Roof (R5)	4	S
Double 1/2" Plywood Floor	5	S
Spare Tire, Wheel, Carrier, & Cover	6	S
Automatic Hydraulic Leveling Jacks (Class A)	7	S
4-Way Shocks on Front (Class A)	8	S
Radial Tires & Aluminum Wheels (Class A)	9	S
Radial Tires (Mini)	10	O
Mud Flaps - Front & Rear	11	S
Wire Style Wheel Covers (Mini)	12	S
Dual Fuel Conversion (Except for California)	13	S
Automatic Hydraulic Leveling Jacks (Mini)	14	O

### J. CHASSIS FEATURES

Automatic Transmission	1	S
Power Steering	2	S
Power Brakes	3	S
Cruise Control	4	S
Custom Tilt Wheel (Class A)	5	S
High Output Heater/Air Conditioner	6	S
6-Way Power Driver Seat (Class A)	7	S
78 Gallon Gasoline Fuel Capacity (Class A)	8	S
41 Gallon Gasoline Fuel Capacity (Ford Mini)	9	S
36 Gallon Gasoline Fuel Capacity (Chevy Mini)	10	S

### K. MISCELLANEOUS

Automatic Rewind Cord (Class A)	1	S
Automatic Rewind Water Hose (Class A)	2	S
Customer Pick Up	1	O

## Decor Packages

Plantation Cocoa

Ginger Nut

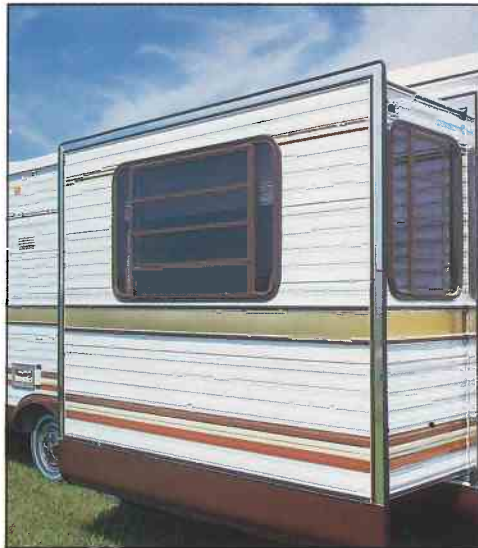


Sterling Silver

Sapphire Blue



## Special Features



Outer Space—an exterior view of the Kountry Aire Fifth Wheel power slide-out.



Fitted sheets are standard in all Kountry Aire and London Aire Towables.



12 volt Electric Tongue Jack, standard on London Aire Travel Trailers.



Watch it! Cable TV that is. The hook-up is standard on all London Aire units.



Kountry Aire Fifth Wheels all have extra room outside! Note the spacious exterior slide-out drawer.



Center Bath Class A bedrooms all come equipped with an AM-FM stereo w/cassette and clock.



Brand name, high quality furniture is used throughout all Kountry Aire and London Aire Lines.



Bring yourself to a new level! Stabilizer jacks are standard on all Kountry Aire and London Aire Travel Trailers and Fifth Wheels.

## Construction

### Kountry Kraftsmanship

Every one of us at Newmar Corporation — from the “top” on down — realizes that a lot of our own self-esteem is wrapped up in the work that we do. That’s why we work so hard to do things right. It’s almost as though we put our signature on everything we do.

Every RV we build is a solidly constructed aluminum superstructure for maximum lateral strength. The floor is double 1/2” plywood, giving you a 1” solid wood floor. The underbelly is completely enclosed. All wiring is code-approved copper.

Coaches are double insulated, with foam and fiberglass insulation featured in the sidewalls and roof. The aerodynamically designed exteriors reduce wind resistance and give you better gas mileage. Included are large dual holding tanks, and large fresh water tanks with demand systems. And there’s plenty of exterior storage space.

Every unit we manufacture is built to RVIA approved standards and codes for your complete satisfaction, safety and comfort.

At Newmar Corporation, we take pride in our craft. If you’d like to come and “watch us work,” scheduled plant tours are given Monday through Friday.

Every coach undergoes rigorous inspections periodically during the construction process.



Roof lines are aerodynamically rounded to reduce wind resistance.

Coaches have dual insulation plus Monsanto Fome-Cor®. You’ll be cool in the summer and warm in the winter, wherever you travel or live in your Kountry Aire.



Weather tight exterior seal being applied.





## Be Our Guest!

Each year, hundreds of visitors from around the United States, and even some foreign countries tour the Newmar facilities. We're proud of our community, our people, our home offices and especially proud of the coaches our craftsmen produce for the recreational vehicle industry.

Newmar Corporation is one of the most respected names in the RV business. The primary reason is quality. The quality that is engineered into every unit produced.

That quality begins here in Nappanee, Indiana.

Our facility is spread over 26 acres, and includes over 150,000 square feet of working space that includes executive offices, production facilities, engineering and drafting departments, IBM computer technology, research and development, and a large sales and customer service division.

Our artisans include some of the finest craftsmen in the country. And the result is some of the most beautiful and popular recreational vehicles in the world — Kountry Lite, Kountry Aire, and London Aire!

But, why not come visit us and see for yourself!

(Information contained in this brochure is presented as factually as possible and is current at time of printing. The manufacturer reserves the right at any time to make changes in product design or specifications at its sole option without notice. By the time you receive your copy, some information may have been updated. Please consult your dealer concerning optional extras and/or specification changes or corrections.)

An aerial view of the Newmar facilities.



Corporate headquarters.

## Editor's Note:

I'd like to extend my personal thanks to you for your interest in Newmar Corporation.

I hope that the preceding pages have further sparked your interest, and that you've enjoyed the manner in which we've chosen to present our product. Just as there's an art to capturing nature in watercolor, there's an art to building fine RV's too. I'm proud of the product designed and crafted here. I believe that our people are masters at their craft. A good deal of our success comes from our belief not only in ourselves but in good old-fashioned values as well.

In the years to come, we will strive for continued excellence in all our products. Because, at Newmar Corporation, we know that a thing of beauty must also endure.

Newmar Corporation,

A handwritten signature in cursive script that reads "Mahlon Miller".

Mahlon Miller  
President  
Chairman of the Board



**Newmar Corporation**

P. O. Box 30 • Nappanee, Indiana 46550  
(219) 773-7791



1984  
**A WORLD AHEAD**

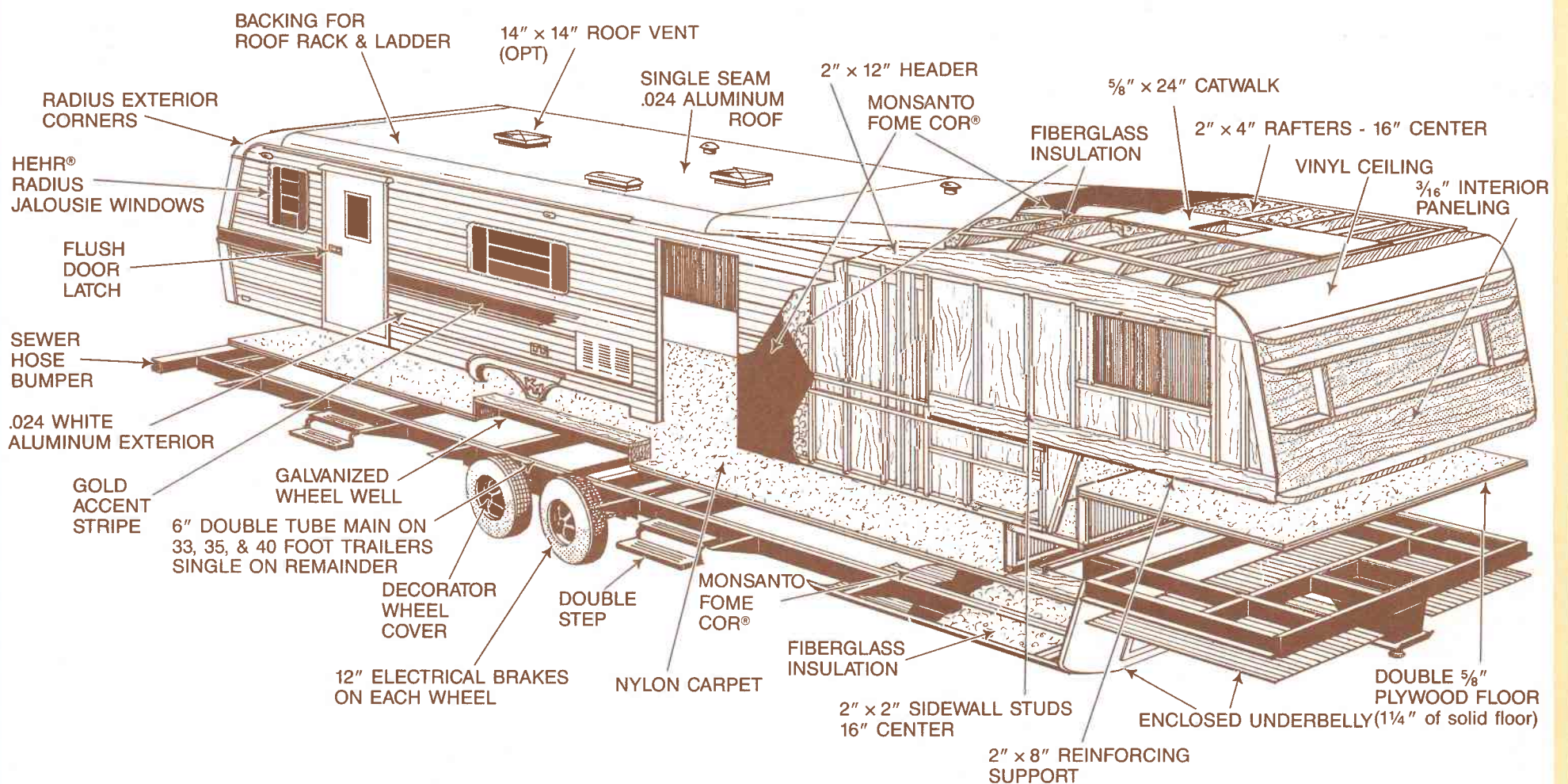


**Kountry Aire**®

**IN TIME AND DESIGN**



# A TRADITION OF QUALITY CRAFTSMANSHIP...



Nothing surpasses the rich warm feeling of nature's beautiful wood. And Kountry Aire has taken that wood and done magic with cabinetry, paneling and moldings, which accent whichever decor color you choose for your coach.

**QUALITY  
CRAFTSMANSHIP.  
ATTENTION TO  
DETAIL.  
PLUS, ALL  
THE EXTRAS  
YOU WANT  
IN A MINI.**

**Reasons why  
Kountry Aire  
is especially  
attractive.**

#### Automotive reasons:

Power steering • cruise control • air conditioning • 4 wheel power brakes automatic transmission • tinted safety glass • dual rear wheels • tilt steering wheel.

#### Interior reasons:

Gas electric refrigerator • 4 burner oven range • drapes, valances and roller shades • double stainless steel sink • complete bath with lavatory, medicine cab., tub and or shower • complete carpeting • choice of 6 decors • power vent in bath • vinyl coated paneling.

#### Exterior reasons:

All white aluminum exterior with radius corners and smooth design • gold accent stripe on side and hood • radius corner, sliding windows • 24" door with screen door • double foldaway steps • lockable exterior storage compartment.

#### Convenience reasons:

12V/110V electrical system • 22,000 BTU furnace with blower, thermostat and ducted heat • marine type toilet • demand water system • water heater • 2 holding tanks • R-7 insulation in sidewalls and R-14 in ceiling.

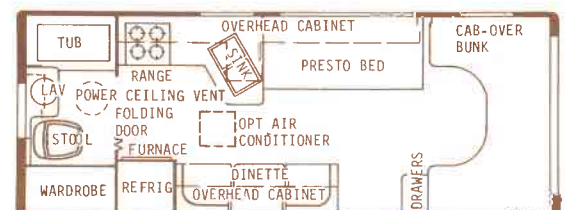
#### Safety reasons:

Emergency escape exit • running lights all around • safety glass in all windows • large side mirrors • safety belts.

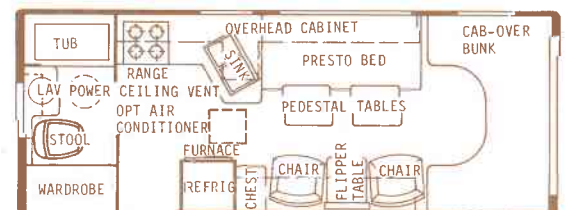
#### Optional reasons:

Roof air conditioning • AM-FM stereo radio • TV antenna • 4000 watt generator • bucket type driver and passenger seats.

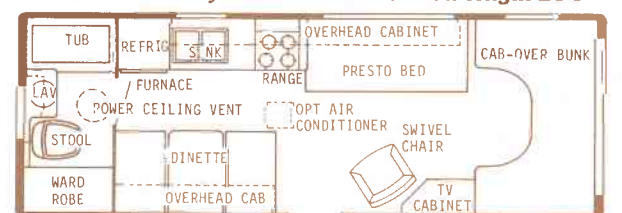
## MINI MOTOR HOMES



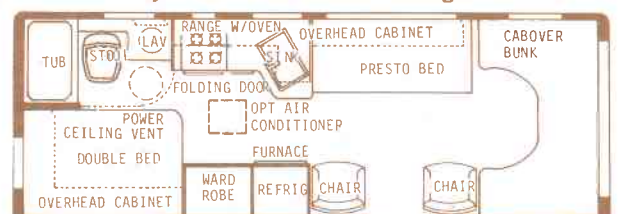
**23RB - Dry Wt. 9600 lbs. - Overall length 24'4"**



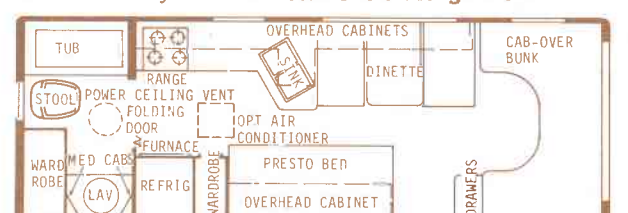
**23RBRD - Dry Wt. 9600 lbs. - Overall length 24'4"**



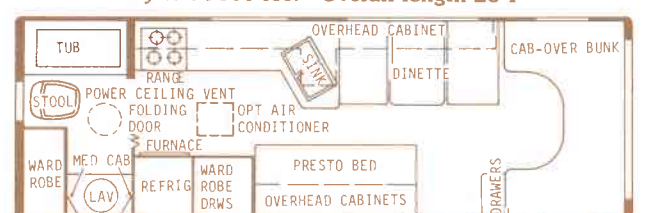
**26RBD - Dry Wt. 9800 lbs. - Overall length 26'4"**



**26RBDB - Dry Wt. 9800 lbs. - Overall length 26'4"**



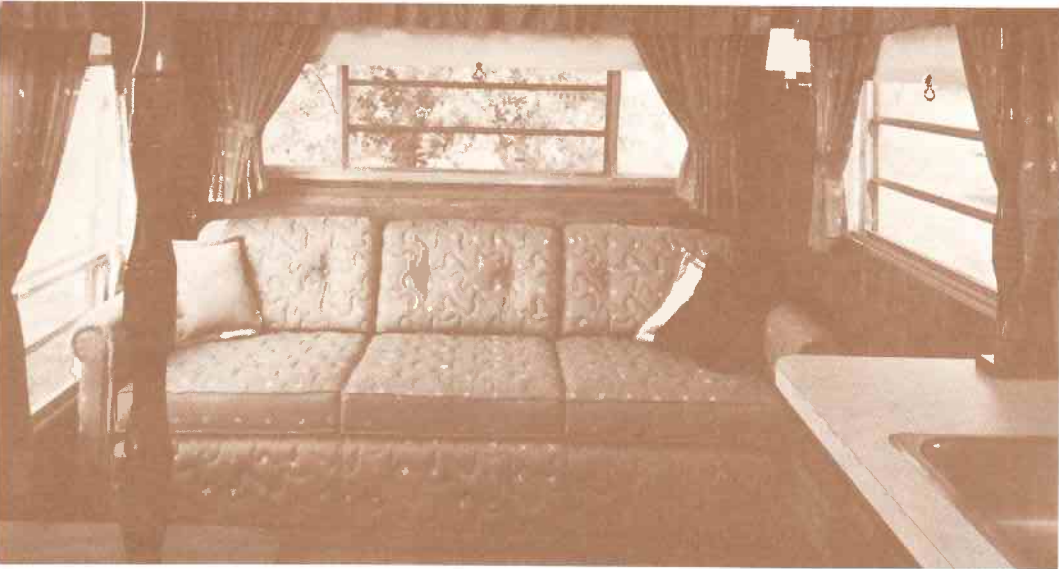
**26RB - Dry Wt. 9800 lbs. - Overall length 26'4"**



**28RB - Dry Wt. 10,000 lbs. - Overall length 27'4"**



BEAUTIFULLY ENGINEERED..



Kountry Aire living rooms are just that. Room for living, or entertaining, in your home away from home. Choose from six decor colors including: Tapioca Tan, Blue Horizon, Dusty Mauve, Bittersweet Brown, Nutmeg Brown and Terra Cotta Rust. Drapes, carpeting, upholstery and all fabrics in your Kountry Aire are color coordinated for maximum eye appeal. Clean up is easy too with our new wipe-clean upholstery finishes.



Attractive, comfortable, dinettes for lunching, or game playing, or visiting, or an afternoon tea. You'll like the convenience. And many models feature a foldaway dinette for additional sleeping space. Easy clean-up after the kids' lunch time too!

Kountry Aire Features and Specifications

	27 RB-TT	27 CB-TT	29 RB-TT	29 CB-TT	31 RB-TT	31 CB-TT	31 CBD-TT	33 CB-TT	33 RB-TT	33 CBD-TT	35 CB-TT	35 CBD-TT	28 RB-FW	28 WTB-FW	32 RB-FW	32 RBDK-FW	32 WTB-FW	32 WT2D-FW	32 EBDK-FW
Carpet with Pad	yes	yes	yes	yes	yes	yes	yes	yes	yes	yes	yes	yes	yes	yes	yes	yes	yes	yes	yes
Kitchen Linoleum	opt	opt	opt	opt	opt	opt	opt	opt	opt	opt	opt	opt	opt	opt	opt	opt	opt	opt	opt
10' Refrigerator (Nominal)	yes	yes	yes	yes	yes	yes	yes	yes	yes	yes	yes	yes	yes	yes	yes	yes	yes	yes	yes
Indirect Lighting	yes	yes	yes	yes	yes	yes	yes	yes	yes	yes	yes	yes	yes	yes	yes	yes	yes	yes	yes
Tub and Shower	yes	yes	yes	yes	yes	yes	yes	yes	yes	yes	yes	yes	yes	yes	yes	yes	yes	yes	yes
80" Sofa Bed	yes	yes	yes	yes	yes	yes	yes	yes	yes	yes	yes	yes	no	yes	no	no	yes	yes	yes
64" Sofa Bed	opt	opt	opt	opt	opt	opt	opt	opt	opt	opt	opt	opt	yes	opt	yes	yes	opt	opt	opt
Microwave Oven	opt	opt	opt	opt	opt	opt	opt	opt	opt	opt	opt	opt	opt	opt	opt	opt	opt	opt	opt
Foldout Table	yes	yes	yes	yes	yes	yes	opt	yes	yes	opt	yes	yes	yes	yes	yes	yes	yes	yes	yes
Wired for Air	yes	yes	yes	yes	yes	yes	yes	yes	yes	yes	yes	yes	yes	yes	yes	yes	yes	yes	yes
Range & Oven	yes	yes	yes	yes	yes	yes	yes	yes	yes	yes	yes	yes	yes	yes	yes	yes	yes	yes	yes
Range & Eyelevel Oven	opt	opt	opt	opt	opt	opt	opt	opt	opt	opt	opt	opt	opt	opt	opt	opt	opt	opt	opt
Furnace	24M	24M	30M	30M	30M	30M	30M	30M	30M	30M	34M	34M	30M	30M	30M	30M	30M	30M	30M
Range Hood	yes	yes	yes	yes	yes	yes	yes	yes	yes	yes	yes	yes	yes	yes	yes	yes	yes	yes	yes
Power Bath Vent	yes	yes	yes	yes	yes	yes	yes	yes	yes	yes	yes	yes	yes	yes	yes	yes	yes	yes	yes
Cabinet Bunk	opt	opt	opt	opt	opt	opt	opt	opt	opt	opt	opt	opt	no	opt	no	no	opt	opt	opt
Bunk	opt	opt	opt	opt	opt	opt	opt	opt	opt	opt	opt	opt	no	no	no	no	no	no	no
Mattress	yes	yes	yes	yes	yes	yes	yes	yes	yes	yes	yes	yes	yes	yes	yes	yes	yes	yes	yes
Box Springs	no	no	no	no	no	no	no	no	no	no	no	no	opt	opt	opt	opt	opt	opt	opt
Hutch	no	no	no	no	no	no	no	no	no	no	no	no	opt	no	no	opt	no	no	no
Counter Extension	opt	opt	opt	opt	opt	no	opt	no	opt	no	opt	no	opt	opt	opt	no	no	opt	opt
Clothes Hamper	no	yes	no	yes	no	yes	yes	yes	no	yes	yes	yes	no	yes	no	no	yes	yes	yes
AM-FM Stereo Cassette	opt	opt	opt	opt	opt	opt	opt	opt	opt	opt	opt	opt	opt	opt	opt	opt	opt	opt	opt
Stainless Sink	yes	yes	yes	yes	yes	yes	yes	yes	yes	yes	yes	yes	yes	yes	yes	yes	yes	yes	yes
Vinyl Coated Plywood	yes	yes	yes	yes	yes	yes	yes	yes	yes	yes	yes	yes	yes	yes	yes	yes	yes	yes	yes
Washer & Dryer	no	no	no	no	no	no	no	no	no	opt	no	no	no	no	no	no	no	no	no
Lighted Grab Handle	1	1	1	1	1	1	1	1	1	1	1	1	1	1	1	1	1	2	2
Gas Bottles Light	yes	yes	yes	yes	yes	yes	yes	yes	yes	yes	yes	yes	yes	no	no	no	yes	yes	yes
Exterior Storage	yes	yes	yes	yes	yes	yes	yes	yes	yes	yes	yes	yes	yes	yes	yes	yes	yes	yes	yes
Front Awning	yes	yes	yes	yes	yes	yes	yes	yes	yes	yes	yes	yes	opt	opt	opt	opt	opt	opt	opt
Rear Awning	no	opt	no	opt	no	opt	opt	no	opt	opt	opt	opt	no	opt	no	no	opt	opt	opt
30" Door	yes	yes	yes	yes	yes	yes	yes	yes	yes	yes	yes	yes	opt	opt	yes	yes	yes	yes	yes
26" Door	no	yes	no	yes	no	yes	yes	yes	no	yes	yes	yes	yes	yes	no	no	no	yes	yes
Tinted Windows	yes	yes	yes	yes	yes	yes	yes	yes	yes	yes	yes	yes	yes	yes	yes	yes	yes	yes	yes
Emergency Exit	yes	yes	yes	yes	yes	yes	yes	yes	yes	yes	yes	yes	yes	yes	yes	yes	yes	yes	yes
Escape Hatch	opt	opt	opt	opt	opt	opt	opt	opt	opt	opt	opt	opt	opt	opt	opt	opt	opt	opt	opt
Gal. Water Tank (Approx.)	45	45	45	45	45	56	56	45	56	56	56	42	45	45	45	45	45	45	45
City Water Fill	yes	yes	yes	yes	yes	yes	yes	yes	yes	yes	yes	yes	yes	yes	yes	yes	yes	yes	yes
Gal. Sewage Tank (Approx.)	35	35	35	35	35	35	35	35	35	35	35	25	25	35	35	35	35	35	35
Gal. Grey Water Tank (Approx.)	35	35	35	35	35	35	35	35	35	35	35	35	35	35	35	35	35	35	35
Gal. Water Heater	8	8	10	10	10	10	8	8	8	8	8	8	8	8	8	10	10	10	10
Demand Water System	yes	yes	yes	yes	yes	yes	yes	yes	yes	yes	yes	yes	yes	yes	yes	yes	yes	yes	yes
Converter & Charger	yes	yes	yes	yes	yes	yes	yes	yes	yes	yes	yes	yes	yes	yes	yes	yes	yes	yes	yes
12V Battery	yes	yes	yes	yes	yes	yes	yes	yes	yes	yes	yes	yes	yes	yes	yes	yes	yes	yes	yes
30 Amp Service	yes	yes	yes	yes	yes	yes	yes	yes	yes	yes	yes	yes	yes	yes	yes	yes	yes	yes	yes
50 Amp Service	opt	opt	opt	opt	opt	opt	opt	opt	opt	opt	opt	opt	opt	opt	opt	opt	opt	opt	opt
30 lb. Gas Bottles	yes	yes	yes	yes	yes	yes	yes	yes	yes	yes	yes	yes	yes	yes	yes	yes	yes	yes	yes
40 lb. Gas Bottles	opt	opt	opt	opt	opt	opt	opt	opt	opt	opt	opt	opt	opt	opt	opt	opt	opt	opt	opt
110V GFI Recept.	yes	yes	yes	yes	yes	yes	yes	yes	yes	yes	yes	yes	yes	yes	yes	yes	yes	yes	yes
Ducted Heat	yes	yes	yes	yes	yes	yes	yes	yes	yes	yes	yes	yes	yes	yes	yes	yes	yes	yes	yes
Generator	no	no	no	no	no	no	no	no	no	no	no	no	no	no	no	no	no	no	no
Power Jack	opt	opt	opt	opt	opt	opt	opt	opt	opt	opt	opt	opt	opt	opt	opt	opt	opt	opt	opt
Fiberglass Insulation	yes	yes	yes	yes	yes	yes	yes	yes	yes	yes	yes	yes	yes	yes	yes	yes	yes	yes	yes
Form Core Insulation	yes	yes	yes	yes	yes	yes	yes	yes	yes	yes	yes	yes	yes	yes	yes	yes	yes	yes	yes
5" or 6" Frame	5	5	6	6	6	6	6	no	no	no	no	no	6	6	6	6	6	6	6
Double 6" Frame	no	no	no	no	no	no	no	yes	yes	yes	yes	yes	no	no	no	no	no	no	no

TRAVEL TRAILERS

FIFTH WHEEL

All weights shown are approximate. All Kountry Aire features and options are not included. Your dealer has a complete list. Each Kountry Aire meets all requirements of the RVIA. Recreational Vehicle Industry Association; the ANSI, American National Standard Institute; and state and federal codes. Some features shown in the photographs are optional. Features and specifications are subject to change without prior notice.



Fifth Wheel Trailers

Mini Motor Homes

35 RB #1 FW	35 RB #2 FW	35 WTEB-FW	35 WTRF-FW	35 FBOK-FW	35 CB-FW	35 WTCB-FW	35 WT2D-FW	35 WRFD-FW	40 RB #1 FW	40 RB #2 FW	40 WTEB-FW	40 WTRF-FW	40 FBOK-FW	40 CB-FW	40 WTCB-FW	40 WT2D-FW	40 WRFD-FW	23 RB MINI	23 RBMD MINI	26 RBD MINI	26 RB MINI	26 RBD MINI	28 RB MINI
yes	yes	yes	yes	yes	yes	yes	yes	yes	yes	yes	yes	yes	yes	yes	yes	yes	yes	yes	yes	yes	yes	yes	yes
opt	opt	opt	opt	opt	opt	opt	opt	opt	opt	opt	opt	opt	opt	opt	opt	opt	opt	opt	opt	opt	opt	opt	opt
yes	yes	yes	yes	yes	yes	yes	yes	yes	yes	yes	yes	yes	yes	yes	yes	yes	yes	yes	yes	yes	yes	yes	yes
yes	yes	yes	yes	yes	yes	yes	yes	yes	yes	yes	yes	yes	yes	yes	yes	yes	yes	yes	yes	yes	yes	yes	yes
no	no	yes	yes	yes	no	no	yes	yes	no	no	yes	yes	yes	no	no	yes	yes	no	no	no	no	no	no
yes	yes	opt	opt	opt	yes	yes	opt	opt	yes	yes	opt	opt	opt	yes	yes	opt	opt	74"	74"	74"	74"	74"	74"
opt	opt	opt	opt	opt	opt	opt	opt	opt	opt	opt	opt	opt	opt	opt	opt	opt	opt	opt	opt	opt	opt	opt	opt
yes	yes	yes	yes	yes	yes	yes	yes	yes	yes	yes	yes	yes	yes	yes	yes	yes	yes	no	no	no	no	no	no
yes	yes	yes	yes	yes	yes	yes	yes	yes	yes	yes	yes	yes	yes	yes	yes	yes	yes	yes	yes	yes	yes	yes	yes
opt	opt	opt	opt	opt	opt	opt	opt	opt	opt	opt	opt	opt	opt	opt	opt	opt	opt	opt	opt	opt	opt	opt	opt
34M	34M	34M	34M	34M	34M	34M	34M	34M	34M	34M	34M	34M	34M	34M	34M	34M	34M	24M	24M	24M	24M	24M	24M
yes	yes	yes	yes	yes	yes	yes	yes	yes	yes	yes	yes	yes	yes	yes	yes	yes	yes	yes	yes	yes	yes	yes	yes
yes	yes	yes	yes	yes	yes	yes	yes	yes	yes	yes	yes	yes	yes	yes	yes	yes	yes	yes	yes	yes	yes	yes	yes
no	no	opt	opt	opt	opt	opt	opt	opt	no	no	opt	opt	opt	opt	opt	opt	opt	opt	opt	opt	opt	opt	opt
no	no	no	no	no	opt	opt	no	no	no	no	no	no	no	opt	opt	no	no	yes	yes	yes	yes	yes	yes
yes	yes	yes	yes	yes	yes	yes	yes	yes	yes	yes	yes	yes	yes	yes	yes	yes	yes	yes	yes	yes	yes	yes	yes
opt	opt	opt	opt	opt	opt	opt	opt	opt	opt	opt	opt	opt	opt	opt	opt	opt	opt	no	no	no	no	no	no
no	opt	no	no	no	no	no	no	no	no	opt	no	no	no	no	no	no	no	no	no	no	no	no	no
no	no	opt	opt	opt	opt	opt	opt	opt	no	no	opt	opt	opt	opt	opt	opt	opt	no	no	no	no	no	no
no	no	yes	yes	yes	yes	yes	yes	yes	yes	yes	yes	yes	yes	yes	yes	yes	yes	no	no	no	no	no	no
opt	opt	opt	opt	opt	opt	opt	opt	opt	opt	opt	opt	opt	opt	opt	opt	opt	opt	opt	opt	opt	opt	opt	opt
yes	yes	yes	yes	yes	yes	yes	yes	yes	yes	yes	yes	yes	yes	yes	yes	yes	yes	yes	yes	yes	yes	yes	yes
yes	yes	yes	yes	yes	yes	yes	yes	yes	yes	yes	yes	yes	yes	yes	yes	yes	yes	yes	yes	yes	yes	yes	yes
opt	opt	opt	opt	opt	opt	opt	no	no	opt	opt	opt	opt	opt	opt	opt	opt	opt	no	no	no	no	no	no
1	1	1	1	2	2	1	1	1	1	1	1	1	2	1	1	2	2	1	1	1	1	1	1
no	no	no	no	no	no	no	no	no	no	no	no	no	no	no	no	no	no	no	no	no	no	no	no
yes	yes	yes	yes	yes	yes	yes	yes	yes	yes	yes	yes	yes	yes	yes	yes	yes	yes	yes	yes	yes	yes	yes	yes
opt	opt	opt	opt	opt	opt	opt	opt	opt	opt	opt	opt	opt	opt	opt	opt	opt	opt	no	no	no	no	no	no
no	no	opt	opt	opt	opt	opt	opt	opt	no	no	opt	opt	opt	opt	opt	opt	opt	no	no	no	no	no	no
yes	yes	yes	yes	yes	yes	yes	yes	yes	yes	yes	yes	yes	yes	yes	yes	yes	yes	no	no	no	no	no	no
no	no	no	no	yes	yes	yes	yes	yes	no	no	no	no	no	yes	yes	yes	yes	24"	24"	yes	yes	yes	yes
yes	yes	yes	yes	yes	yes	yes	yes	yes	yes	yes	yes	yes	yes	yes	yes	yes	yes	yes	yes	yes	yes	yes	yes
yes	yes	yes	yes	yes	yes	yes	yes	yes	yes	yes	yes	yes	yes	yes	yes	yes	yes	yes	yes	yes	yes	yes	yes
opt	opt	opt	opt	opt	opt	opt	opt	opt	opt	opt	opt	opt	opt	opt	opt	opt	opt	opt	opt	opt	opt	opt	opt
56	56	56	40	45	56	56	56	40	56	56	56	40	45	56	56	56	40	26	26	26	26	30	30
yes	yes	yes	yes	yes	yes	yes	yes	yes	yes	yes	yes	yes	yes	yes	yes	yes	yes	yes	yes	yes	yes	yes	yes
35	35	35	35	35	35	35	35	35	35	35	35	35	35	35	35	35	35	29	29	29	29	18	29
35	35	35	35	35	35	35	35	35	35	35	35	35	35	35	35	35	35	18	18	18	18	29	18
10	10	10	10	10	10	10	10	10	10	10	10	10	10	10	10	10	10	6	6	6	6	8	8
yes	yes	yes	yes	yes	yes	yes	yes	yes	yes	yes	yes	yes	yes	yes	yes	yes	yes	yes	yes	yes	yes	yes	yes
yes	yes	yes	yes	yes	yes	yes	yes	yes	yes	yes	yes	yes	yes	yes	yes	yes	yes	yes	yes	yes	yes	yes	yes
yes	yes	yes	yes	yes	yes	yes	yes	yes	yes	yes	yes	yes	yes	yes	yes	yes	yes	yes	yes	yes	yes	yes	yes
opt	opt	opt	opt	opt	opt	opt	opt	opt	opt	opt	opt	opt	opt	opt	opt	opt	opt	opt	opt	opt	opt	opt	opt
yes	yes	yes	yes	yes	yes	yes	yes	yes	yes	yes	yes	yes	yes	yes	yes	yes	yes	yes	yes	yes	yes	yes	yes
opt	opt	opt	opt	opt	opt	opt	opt	opt	opt	opt	opt	opt	opt	opt	opt	opt	opt	no	no	no	no	no	no
yes	yes	yes	yes	yes	yes	yes	yes	yes	yes	yes	yes	yes	yes	yes	yes	yes	yes	yes	yes	yes	yes	yes	yes
opt	opt	opt	opt	opt	opt	opt	opt	opt	opt	opt	opt	opt	opt	opt	opt	opt	opt	opt	opt	opt	opt	opt	opt
opt	opt	opt	opt	opt	opt	opt	opt	opt	opt	opt	opt	opt	opt	opt	opt	opt	opt	no	no	no	no	no	no
yes	yes	yes	yes	yes	yes	yes	yes	yes	yes	yes	yes	yes	yes	yes	yes	yes	yes	yes	yes	yes	yes	yes	yes
yes	yes	yes	yes	yes	yes	yes	yes	yes	yes	yes	yes	yes	yes	yes	yes	yes	yes	yes	yes	yes	yes	yes	yes
no	no	no	no	no	no	no	no	no	no	no	no	no	no	no	no	no	no	NA	NA	NA	NA	NA	NA
yes	yes	yes	yes	yes	yes	yes	yes	yes	yes	yes	yes	yes	yes	yes	yes	yes	yes	no	no	no	no	no	no

TAILORED TO PLEASE...



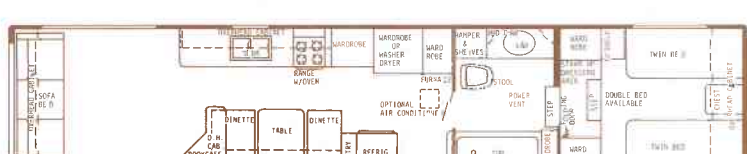
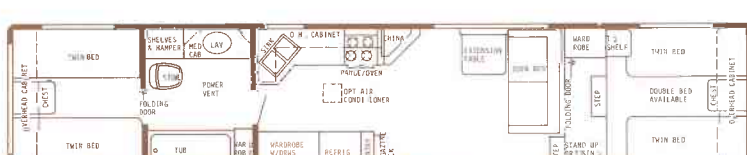
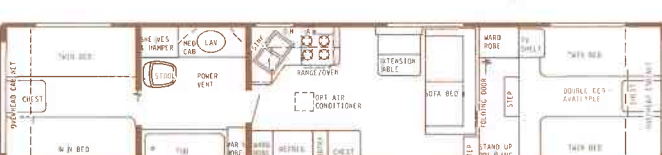
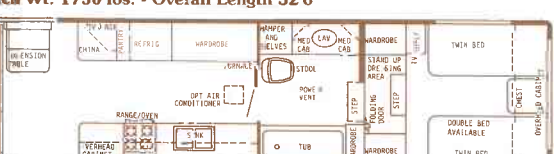
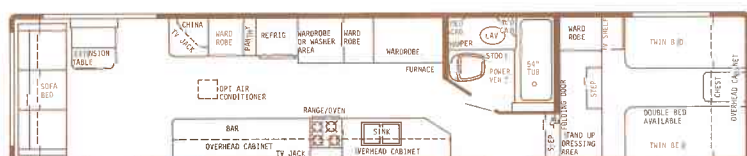
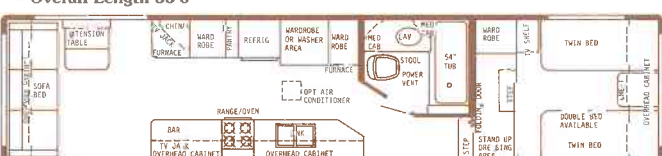
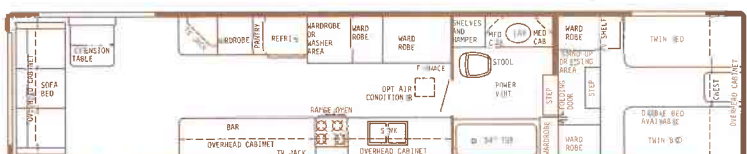
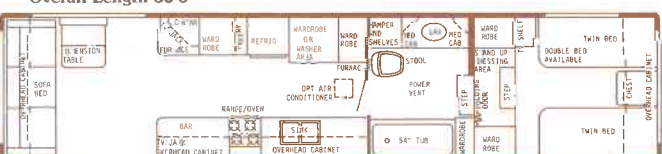
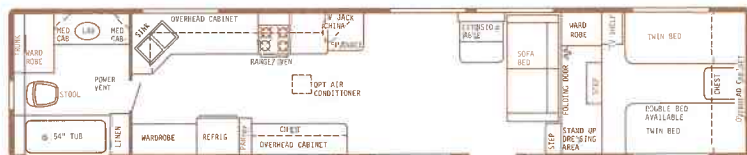
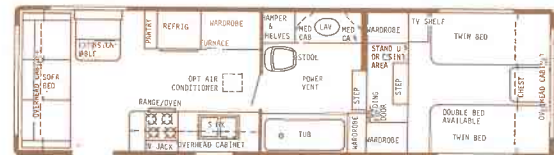
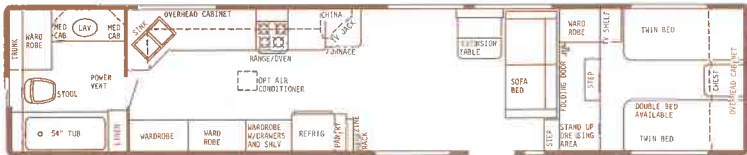
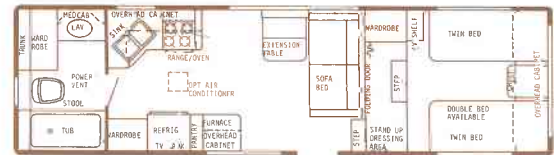
Beautiful vanities, generous lighting, custom-built showers and tubs with fiberglass curtains, and storage for towels and bathroom essentials. In a Kountry Aire, you have room to move around.

Generous sized bedrooms allow you to stretch out and provide plenty of head space in the fifth wheel and cab-over models.



Kountry Aire kitchens combine maximum working area with ample storage space. Features like slide out bread board, pull out pantry, four burner range with oven, and vented range hood and light make Kountry Aire kitchens a chef's delight and clean-up a breeze. Everything at your fingertips in a dream kitchen setting.

TRAILERS







# Kountry Aire®

## **NEWMAR QUALITY IS YOUR REASON TO BUY... HERE ARE TWENTY REASONS WHY YOU WILL VALUE YOUR DECISION.**

1. Rugged tubular steel frame with cross members and outriggers.
2. All four wheels equipped with 12" electric brake axles and shocks.
3. Rust-resistant, insulated, galvanized wheel wells.
4. Double 5/8" plywood floor. (1 1/4" of solid wood floor.)
5. Completely enclosed, fully insulated, wrap-around aluminum underbelly.
6. Large dual holding tanks.
7. Large fresh water tank with demand water system and standard city water hook up.
8. A.B.S. drain, waste, and vent lines for leakproof joints.
9. All copper "code" approved electrical wiring.
10. Completely reinforced superstructure for maximum lateral strength includes 2 x 2 wood sidewall studs on 16" center & 2 x 4 rafters on 16" centers.
11. Double insulated: Fully insulated with fiberglass plus completely enclosed and sealed with Monsanto Fome Cor®.
12. Smooth aerodynamically designed radius exterior corners.
13. Single seam, heat deflecting white aluminum roof.
14. .024 white aluminum exterior metal with color keyed gold accent stripping.
15. Full opening type, tinted, radius corner, Hehr jalousie style windows.
16. High quality wood plus wood grain vinyl finish.
17. Radius corner cabinets and drawers are glued and screwed for strength.
18. Brand new decor package includes following designer color-coordinated selections: Tapioca Tan, Blue Horizon, Dusty Mauve, Bittersweet Brown, Nutmeg Brown and Terra Cotta Rust.
19. Quality name brand fixtures and appliances used throughout.
20. Built to RVIA approved standards and codes for your complete satisfaction and comfort.