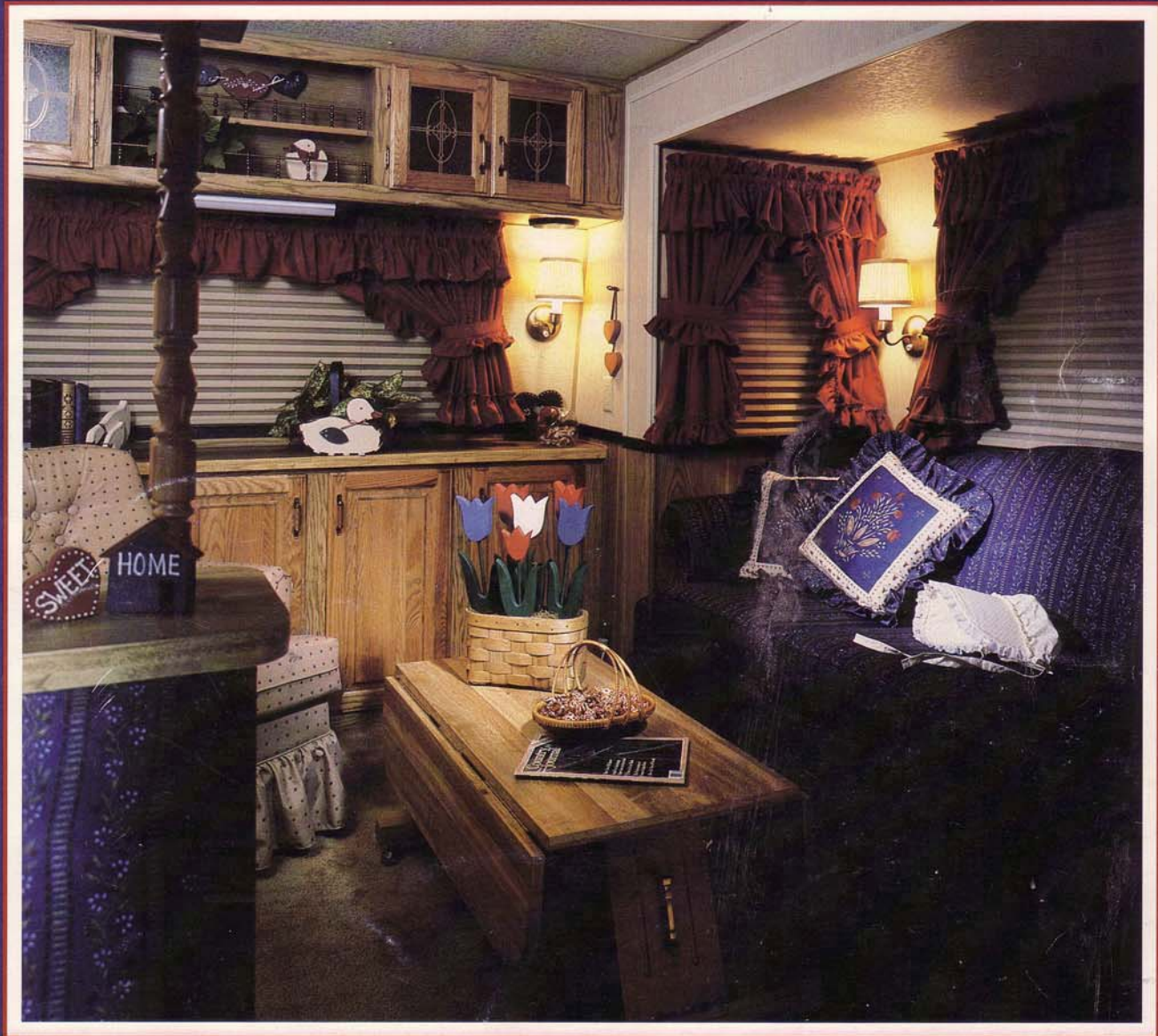


KOUNTRY STYLE

A publication of Newmar Corporation

Volume II Fall, 1985



*This magazine has been published
in celebration of the American way of life,
fine art and craftsmanship.*

KOUNTRY STYLE

Kountry Lite 3

Kountry Aire 9

London Aire 17

On our cover: Kountry Aire's Special Edition Fifth Wheel (with power slide-out) called "Kountry Bonnet by Bonnie". And all the unique little accessories you see are part of the package!

Special Features 24

Construction 26

Floor Plans appendix

Be Our Guest! back cover

Kountry Style is published annually by Newmar Corporation. Editorial and executive offices are located in Nappanee, Indiana 46550.

Copyright 1985 Newmar Corporation. All rights reserved. Copyright contents may not be reproduced in any manner without prior written permission of Kountry Style.

To our readers:

It is our pleasure to be able to introduce the 1986 product line from Newmar Corporation. It is also with pride that we present Kountry Style, Volume II.

Volume I acquainted you with the principles and philosophy of Newmar Corporation. It also paid high tribute to core characteristics of the company – American talent and integrity.

In this issue, we will focus on DESIGN – a very big word at Newmar. Industrial design, architectural design, and interior design. Volume II's secondary purpose pays tribute to still other important corporate characteristics – "Yankee" pride and ingenuity.

Enjoy!

The Publishers

KOUNTRY STYLE

Established 1984

Editor-in-Chief: Mahlon Miller

Associate Editor: Krisanne Anglin

Photographer: Gary Mills

Stylist: Bonnie Hoffer

Properties: Sports by Sullivan

Publishers: Hendershot & Associates

KOUNTRY LITE



The key word to the Kountry Lite line of recreational vehicles is "EASY."

Easy to own, because initial purchase is low. Easy to operate, because the lightweight aluminum structure and aerodynamic design reduces fuel consumption. Easy on the eyes, because of the clean, simple exterior lines. And **inside**, the Newmar Corporation commitment to design is apparent everywhere!

(This new front kitchen Travel Trailer is a good example.)

This year, the most difficult question you ask may very well be "Which one?" Because now, in addition to the two towables, two beautiful motorized vehicles have been added to the line – and all four have lots to offer!

Where else will you find **standard** features like designer velvets, routed pecan panelling, pull-out

kitchen pantry, deep double stainless steel sinks **and** an aluminum structure on 16" center – all in an economical vehicle? Where else are you assured of impeccable design and craftsmanship from an industry leader at such an affordable price?

No place **we** know of. Maybe that's why...

The Kountry Lite switch is on!



If it's livability and good design at an affordable price that you're looking for, you just may fall in love with the Kountry Lite Fifth Wheel. Routed pecan panelling, beautiful built-ins, and a lovely selection of decor packages make it hard to believe that Kountry Lite is actually our "economical line."

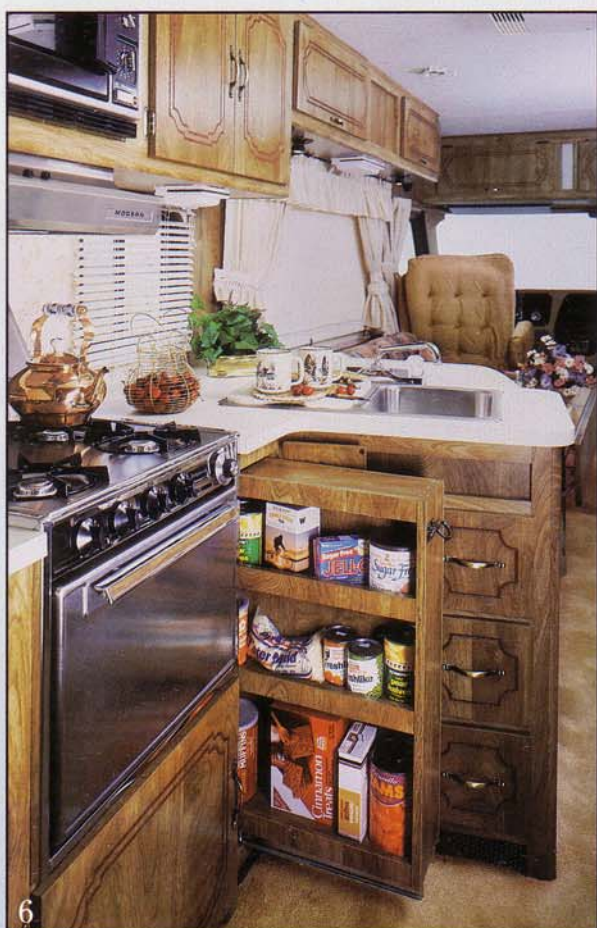




Careful attention to detail is apparent throughout the Kountry Lite Travel Trailer. Notice the decorative headboard that matches the draperies and spread in the bedroom. And the soft, subtle colors continue into the bath. Lighting is well-placed both for function and atmosphere. And with all this cabinet and drawer space, you'll find you have a place for everything!

Fabric: Kountry Lite's
Shadow Blue



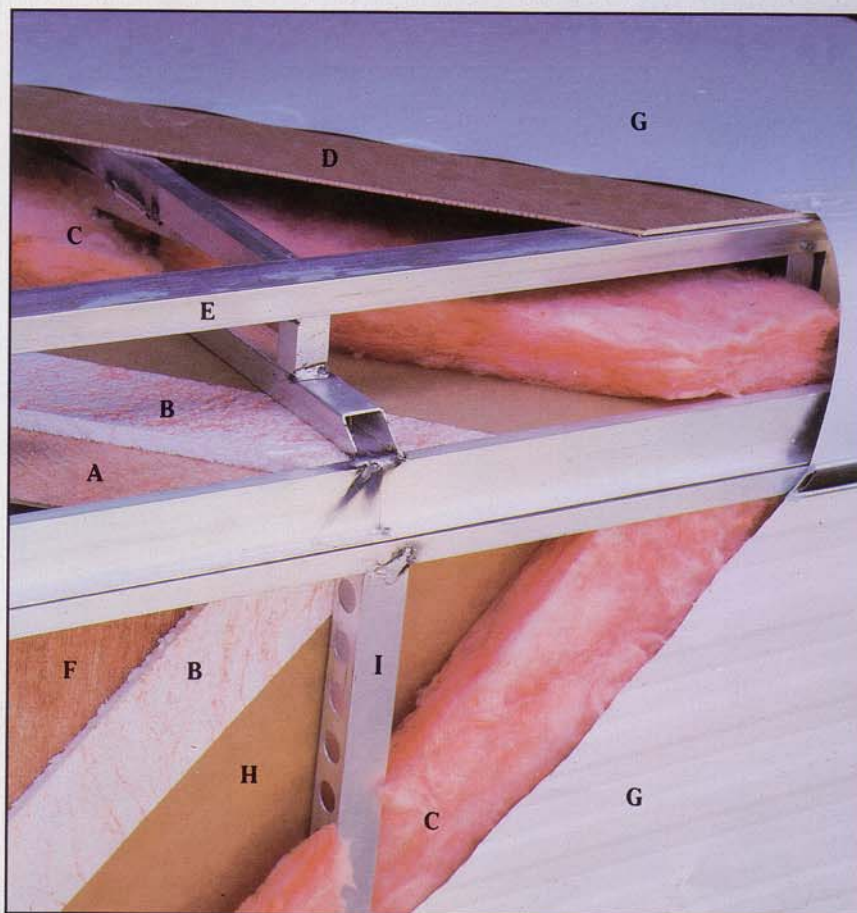


Here's Kountry Lite's newest arrival – the completely new Motorhome. It's easy to see the "family resemblance" to the other Newmar Class A vehicles. All have fiberglass fronts. All are well-designed, solidly built, and have amenities above and beyond similarly-priced motorhomes. The pull-out pantry in the kitchen, for instance, is a favorite among cooks!

Kountry Lite products are as practically constructed as they are prettily decorated. This insulation cross-section tells the story:

ALUMINUM SUPER STRUCTURE

- A Ceiling
- B 5/8" Bead Foam
- C R-5 Fiberglass Roof Insulation
- D Plywood Backer
- E Truss Style Roof Rafter 16" Center
- F Interior Panelling
- G Aluminum Exterior
- H Craft Paper
- I 1 1/2" Aluminum C Channel



The bath in the Kountry Lite Mini Home is light, and airy, thanks to a well-placed window. And it's spacious enough for a combination tub-shower.

Fabric: Kountry Lite's Plumberry



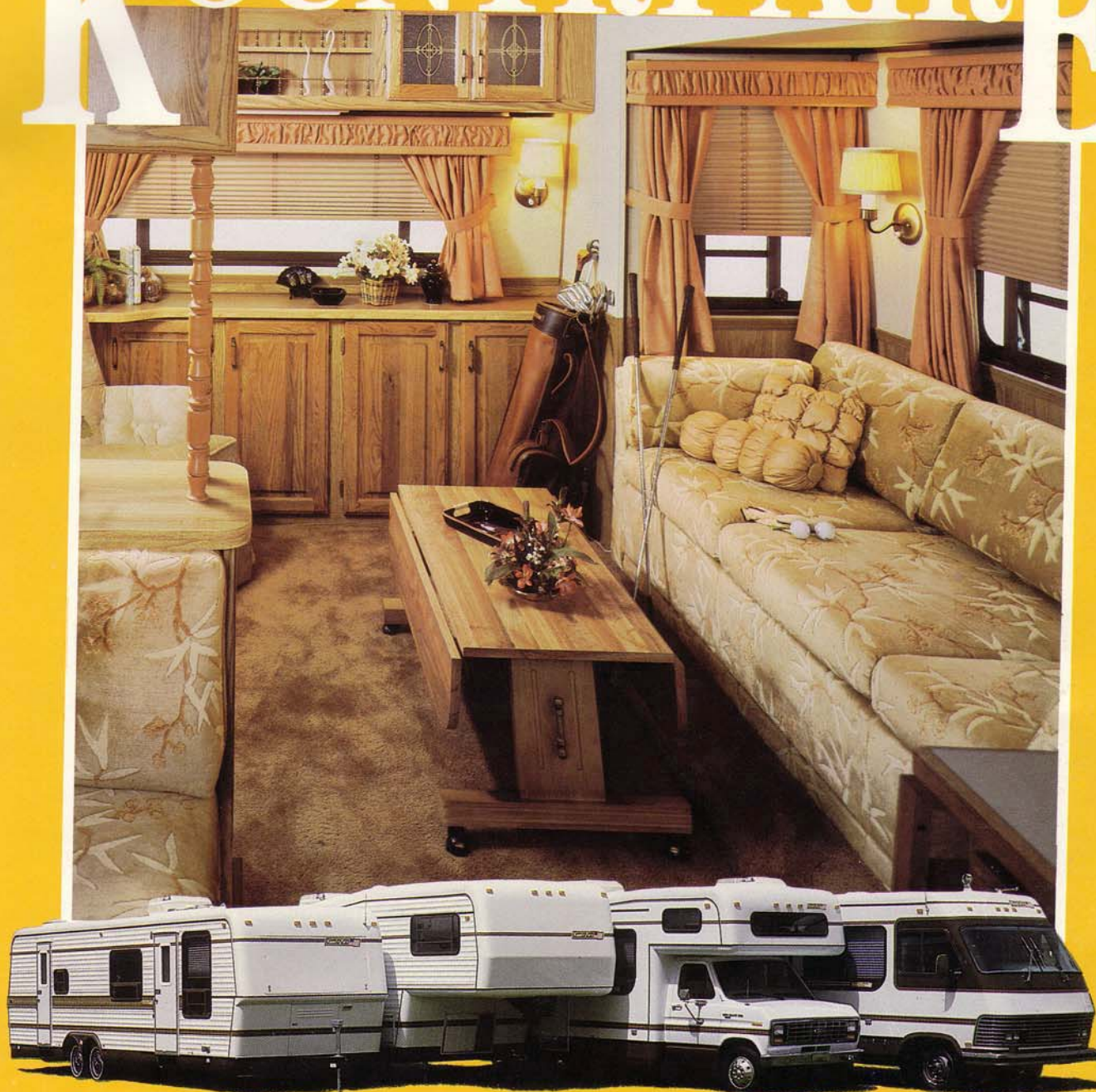


Fabric: Kountry Lite's
Copper Brown

Another newcomer to the Kountry Lite line is this spirited new Mini Home. Long on comfort and on space, it's ready to go on short notice. And speaking of notice, have you taken a good look at these Kountry Lite vehicles? How do you suppose we can offer so much for so little?



KOUNTRY AIRE



Here's the product line that Newmar Corporation has built its reputation on. And, year after year, inside and out, Kountry Aire vehicles just keep getting better!

Exteriors for '86 are sleeker, smoother – thanks to the new fiberglass sidewalls (standard on motorized, optional on towables). And to well-engineered features like the hidden gas bottles on the Fifth Wheel, or the concealed

battery-in-a-box (see page 24). And despite their good looks, they're tough – thanks to an aluminum superstructure (page 25) and unseen features like heavy-duty brake and axle systems.

Interiors – well, **you** be the judge! We think the photographs on these next few pages are worth well over a thousand words. Even a casual glance will tell you that "detail" is Kountry Aire's middle name.

Little touches, like shirred drapery valances, etched glass, reversible pillow shams, and brass and wood cabinetry hardware – they're the extras you usually find only in vehicles priced far in excess of Kountry Aire.

And **why** do the folks at Newmar build all this quality into each and every Kountry Aire made? It's no secret: we're trying to impress **YOU!**

Kountry Aire Fever...Katch It!



Fabric: Kountry Aire's
Burgundy Mocha

A particular point of pride with Newmar craftsmen is our cabinetry. And new for 1986 in the Kountry Aire line is handsome oak cabinetry with raised panel doors. Pictured above is our Fifth Wheel kitchen.

Exterior storage is plentiful in all Kountry Aire vehicles. And exterior drawers lock for added security.



Exciting new fabrics and textures. Soft yet efficient 12-volt recessed lighting. And improvements everywhere you look. This Kountry Aire Travel Trailer has a new double stainless steel sink that's deeper in '86 – because our customers asked for it!

Fabric: Kountry Aire's
"Kountry Bonnet by Bonnie"

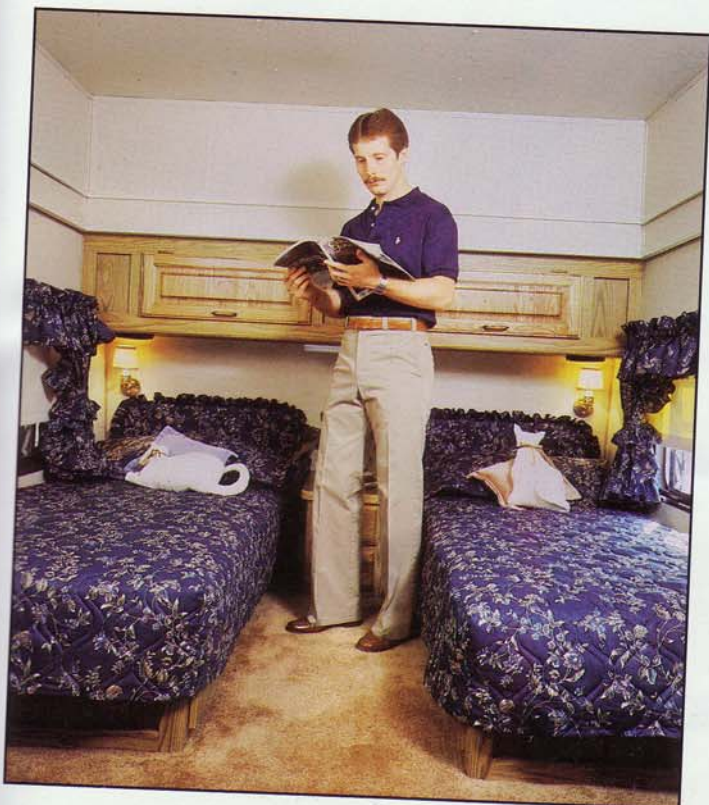




Fabric: Kountry Aire's Maple Sugar

Because they are center stage, the bedspreads with reversible pillow shams have been carefully chosen. Pictured here is Kountry Aire's Fifth Wheel, which features an expanded floor area. The privacy partition in this vehicle's bath is an especially convenient new addition for '86.





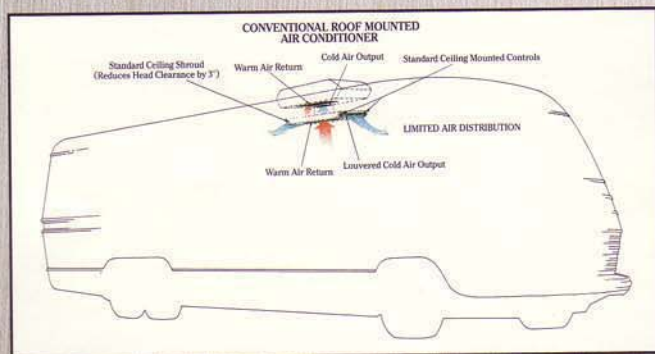
Design continuity prevails in the Kountry Aire Motorhome as coach and compartment come beautifully together. And something that's new this season in this outstanding vehicle is decor-coordinated vinyl dash.

Now you can "stand up and shout" if you like in our Fifth Wheel bedroom! We've raised the ceiling to accommodate the six-footers among you.

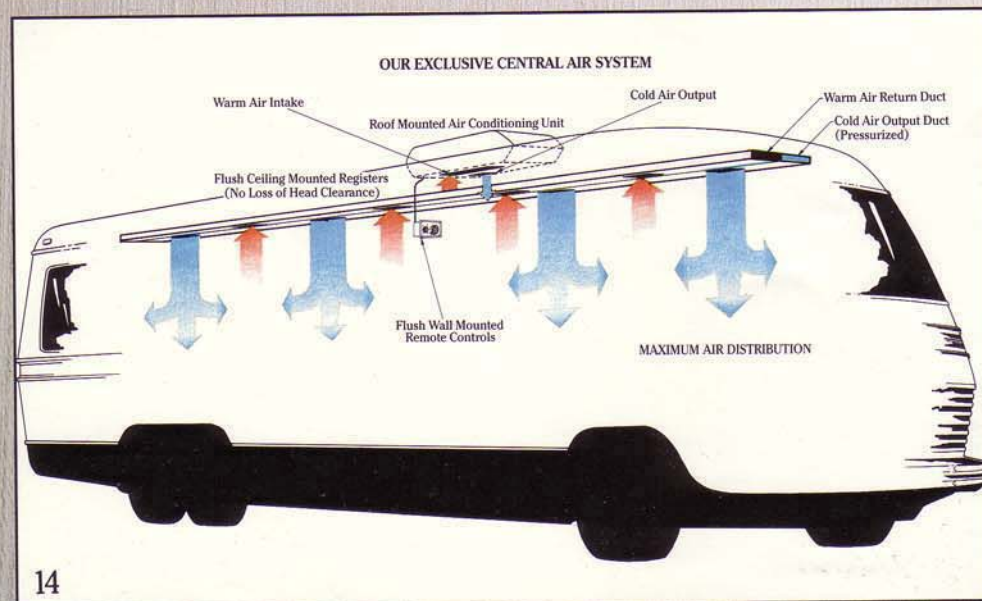
Fabric: Kountry Aire's
Fire Mist



Credit the folks in our accessories department for the added sparkle of these deluxe chrome wheel covers (standard on the Kountry Aire Motorhome). They're the same clever people who thought of the removable clothes rack in the tub area of our Mini-Homes. It's shown on the adjacent page as an option in the Kountry Aire.



Central air conditioning is so even and comfortable! And **now** it's available in the Kountry Aire and London Aire. Pretty cool!






Modern manufacturing techniques combine with the personal concern and skills of craftsmen to make every Newmar vehicle built a joy to its owner. Just look at the care that's gone into this Kountry Aire Mini Home!



Fabric: Kountry Aire's
Biscuit & Blue



A close-up photograph showing various fabric textures and colors. A spool of purple thread, a piece of pink fabric, and a small floral arrangement are visible. A piece of fabric with a geometric pattern is pinned to a larger piece of pink fabric.

Fabric: Kountry Aire's Rose Pearl



Subtle colors and wonderful textures grace the walls and window treatment throughout the Kountry Aire line. This year's collection has been chosen for its special compatibility with our new oak woodwork. (Pictured here: Kountry Aire Motorhome.)



LONDON AIRE



London Aire – truly mobile elegance. Deluxe accommodations that travel **with** you.

This is Newmar Corporation's top-of-the-line, and it's obvious why.

Look at these new exterior designs. A new, softer pearl-grey body. Bold, dramatic oxford striping. Radial tires with gleaming polished aluminum wheels.

And inside? Available for the first time in '86 is rich, sumptuous walnut woodwork. And it's magnificent, as you can see in this London Aire Fifth Wheel. Attention to detail is meticulous, as always. Notice the brass and porcelain cabinetry hardware, the silk textured feature wall in the towables, the woven wood shades throughout the line. These, and myriad other thoughtful

touches, go together to make this season's London Aire line superlative.

Each London Aire vehicle is carefully and lovingly crafted by Newmar Corporation with the attention and insistence on quality you'd give your own home.

London Aire – because *how* you travel is as important as where!



Color, pattern and texture – these are ingredients that bring a fresh exciting look to our London Aire Travel Trailer bedroom. (Beautiful ruffled pillow shams have been added this season!) And **comfort** is a feature that is not seen but heard! When someone stretches out here, you'll hear an "ahhh!"

Fabric: London Aire's Golden Suede

Innovation in art! Brand new (and **standard**) this year, every London Aire vehicle comes complete with an **original** oil painting. Each is professionally and individually selected to complement your decor!

"Getting hitched" was never easier, thanks to this 12-volt electric tongue jack – and it's standard on London Aire towables.

Unique to American design is the art of combining a handsome mix of classic and contemporary style. That's apparent in this London Aire Travel Trailer. Notice how well the richness of classic oak and etched glass blend with the contemporary fabrics and the woven wood shades. You'll feel at home here!



Although gourmet cooks feel perfectly at ease in this London Aire Fifth Wheel kitchen, we equipped it so that beginners can perform like stars, too! Simply **everything** you need – all within easy reach.



This delightful little relaxation spot is called our Garden Tub – and it's available in many models (see floor plans). The good-looking brass hardware is **standard** in all London Aire bathrooms.



How *is* it that our engineers manage to put all the convenience of a fifth wheel kitchen into our London Aire Motorhome? Brilliant! And a new standard in all London Aire motorized units this year is the combination convection/microwave with 4-burner range.

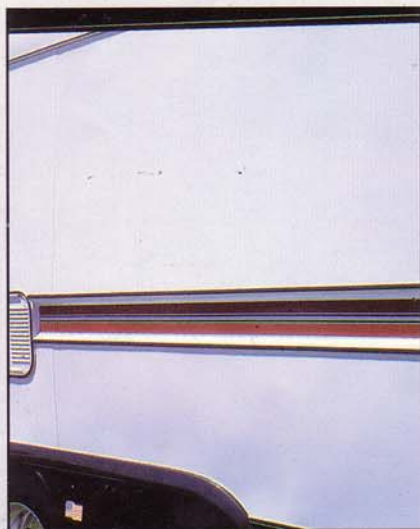


And here are two more features brought to you this year by the group in engineering: automatic hydraulic leveling jacks and an automatic rewind electric cord and water hose. Both are available on various motorized vehicles. (See specifications for details.)



Fabric: London Aire's
Mauve Blush





Luxurious yet durable sofas and chairs join with the handsome walnut woodwork to make this London Aire Motorhome one of the most inviting *and* liveable vehicles on the road today. Combine these with exterior features like fiberglass side-walls and closed-circuit monitor, and you'll wonder how others can compete!



We like to call this one the Maximum Mini – our 1986 London Aire – because we think it has virtually **everything** you could want in a mini home. What do **you** think?

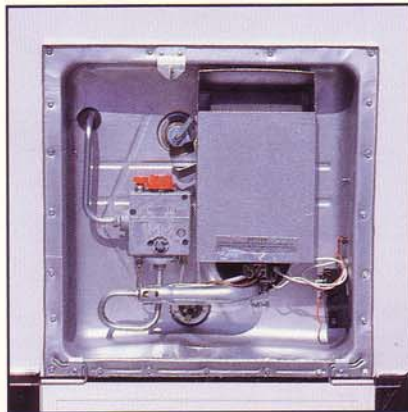


Fabric: London Aire's Polished Pewter





All Kountry Aire and London Aire towable units come fully-equipped this year with added convenience and security. A 30" entrance door with a completely flush latch and dead bolt.



A larger (10 gallon!) gas/electric water heater is standard in '86 on all Kountry Aire and London Aire vehicles.



Another industry first from Newmar! And what a neat idea! A hidden spare tire carrier in slide-out tray – standard on all Kountry Aire and London Aire vehicles.

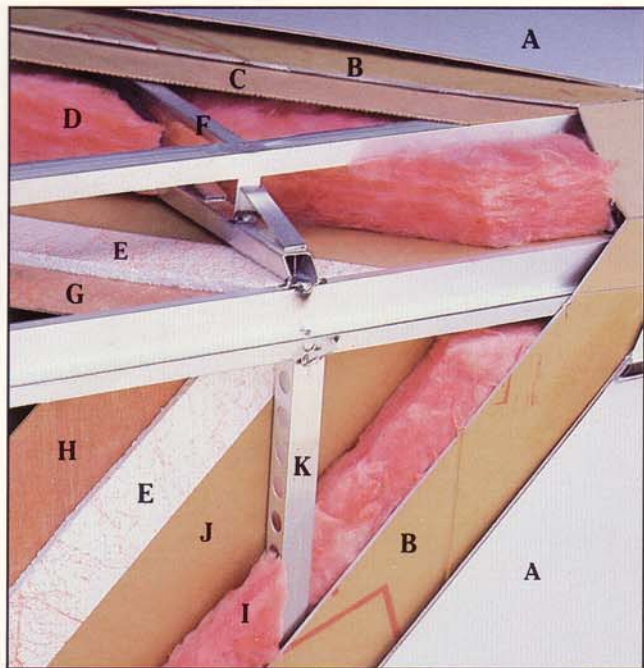
Special Features

So far, you've read a lot about the thought and design that's gone into the interiors – and just a little about exteriors – of the Newmar Corporation vehicles.

On these two pages, we want to give special emphasis to the contributions made to the '86 product line by our Research and Development staff. We think you'll agree: they've worked hard this year to create some exciting new features just for you.



These features were originally introduced at Louisville in '85: a) a slide-out battery compartment b) a pull-down vinyl stone-guard c) an electrically-powered front awning d) a compartment to conceal the gas bottles. (Consult the spec charts to see which towable units are equipped.)

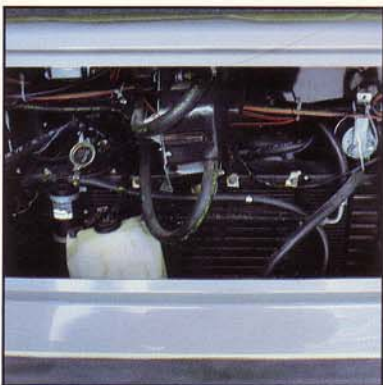


Kountry Aire and London Aire ALUMINUM SUPER STRUCTURE

- A Fiberglass or Aluminum Exterior (see specs)
- B Fome-Cor Insulation
- C Plywood Backer
- D R-10 Fiberglass Insulation
- E 5/8" Bead Foam Insulation
- F Truss Style Roof Rafter 16" Center
- G Ceiling Material
- H Interior Panelling
- I R-5 Fiberglass Insulation
- J Craft Paper
- K 1 1/2" Aluminum C Channel



Here's the exterior view of our ever-popular Kountry Aire power slide-out Fifth Wheel. This space-making feature is also optional this year on the Kountry Lite Fifth Wheel.



Dual fuel consumption is available in all motorized units (except units built for California).



There's more than storage space under our convertible dinettes. Flex-a-lators are built-in on all Newmar vehicles.



A-door-able! And new in '86 - a driver-side door that's available as a standard or an option on all three Motorhomes.

Kountry Kraftsmanship

Every one of us at Newmar Corporation – from the “top” on down – realizes that a lot of our own self-esteem is wrapped up in the work that we do. That’s why we work so hard to do things **right**. It’s almost as though we put our signatures on everything we do.

Every RV we build is a solidly constructed aluminum superstructure for maximum lateral strength. The floor is double ½” plywood, giving you a 1” solid wood floor. All towable underbellies are completely enclosed. All wiring is code-approved copper.

Coaches are double insulated, with foam and fiberglass insulation featured in the sidewalls and roof. The aerodynamically designed exteriors reduce wind resistance and give you better gas mileage. Included are large dual holding tanks, and large fresh water tanks with demand systems. And there’s plenty of exterior storage space.

Every unit we manufacture is built to RVIA approved standards and codes for your complete satisfaction, safety and comfort.

Before any unit leaves our factory – and at numerous intervals **during** construction – it undergoes a rigid inspection process. This quality control assures our customers of many years of happy travelling with their Newmar RV.

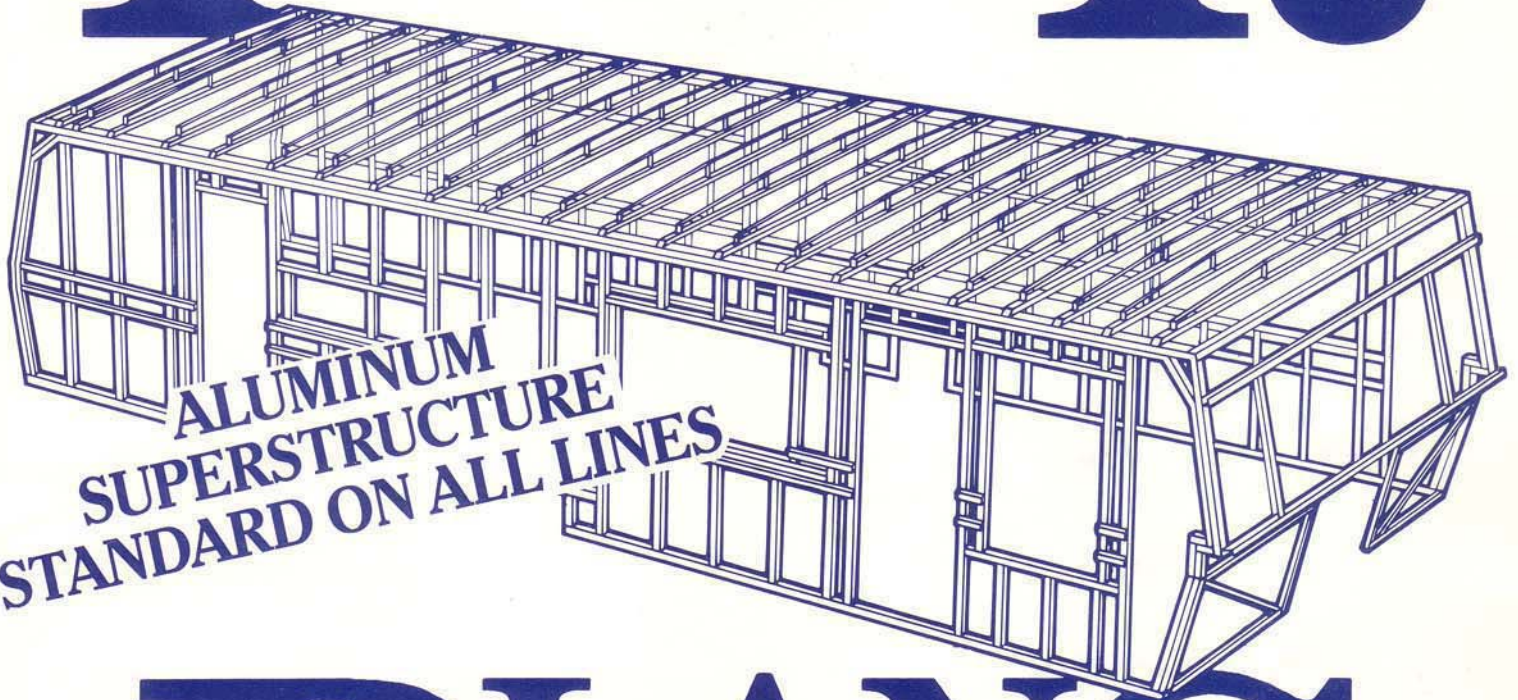
At Newmar Corporation, we take pride in our craft. If you’d like to come and “watch us work”, **scheduled** plant tours are given Monday through Friday.

(Information contained in this brochure is presented as factually as possible and is current at time of printing. The manufacturer reserves the right at any time to make changes in product design or specifications at its sole option without notice. By the time you receive your copy, some information may have been updated. Please consult your dealer concerning optional extras and/or specification changes or corrections).



Newmar Corporation

FLOOR



**ALUMINUM
SUPERSTRUCTURE
STANDARD ON ALL LINES**

PLANS

'86



The Newmar line of recreational Vehicles – Travel Trailers, Fifth Wheels, Mini Homes, Class A Motorhomes.

We begin with a commitment to solid construction in each and every vehicle. That means aluminum superstructures on 16" centers for maximum lateral strength and double ½" plywood for solid 1" wood floors. And each unit is double insulated to insure your comfort, with foam and fiberglass insulation featured in sidewalls and roof.

Then we design living space choices. Floor plan options carefully thought out to provide you with living areas suited to your specific needs. For instance, you can choose a walk through model; decide to omit the dinette area; select a unit with center, rear or side bath. This year you can even expand your living space with the power slide out option to increase room size or the power raised roof option to increase ceiling height in the Fifth Wheel bedroom.

Next we develop special features that help make your life a little easier. Whether it's exterior options like the new power hitch jack, driver side door, automatic water hose and electrical cord rewinds or interior features like central air conditioning, microwave oven and garden tub. The idea is to make your travelling more comfortable and more convenient.

Finally, we pay special attention to making your "home" attractive. Interior decorating at its finest! Plush carpeting throughout.

Routed pecan panelling and solid oak cabinetry with raised panel doors. (Or choose this year's new walnut cabinetry.) Carefully selected decorator fabrics and packages in rich luxurious colors, like this year's special edition "Kountry Bonnet by Bonnie" package.

The finished product? A recreational vehicle you'll be proud of. With all the superior craftsmanship, fine attention to detail and finishing touches to make it truly your "home."

Travel Trailers

The towables with lots to offer!

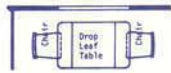
Check the outside. Aerodynamic styling to help improve fuel economy. And for your travelling convenience there are special features like the hidden spare tire in a slide-out tray, the pull-down vinyl stone guard to protect the vehicle's finish, a slide-out battery compartment and concealed gas bottles.

Step inside and notice the special attention given to every detail - from thick carpeting throughout to the fine wood cabinetry and carefully chosen decorator fabrics. Special touches like the stainless steel sink (deeper for '86), dinette with Flex-a-lator, pull-out pantry, textured panelling in the bedroom.

Enough? Not hardly. A variety of floor plans, choice of decorator fabrics and a long list of options make it possible for you to "design" your travel trailer to suit your specific needs.



Option D



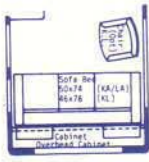
Option F • Free Standing Dinette Option



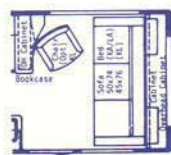
Power Slide Out Option
*Power Slide Outs may require cabinet changes



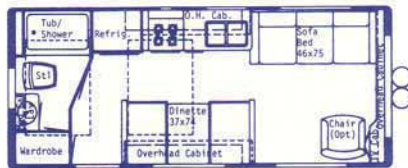
Option Q



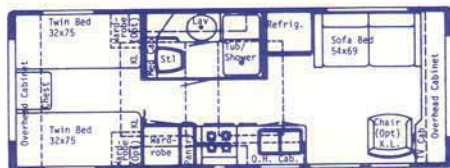
Option P



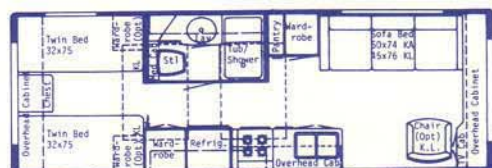
Option S



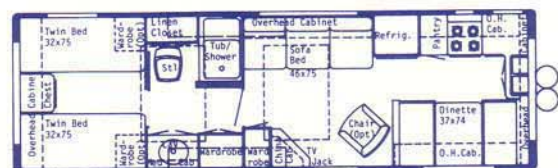
22' Rear Bath Dinette • Available Options P, S KL



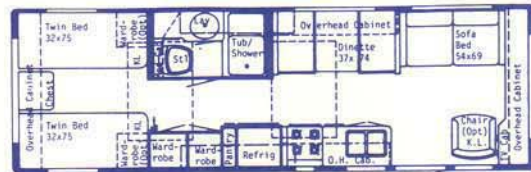
25' Center Bath • Available Options D, Q, P KL, KA



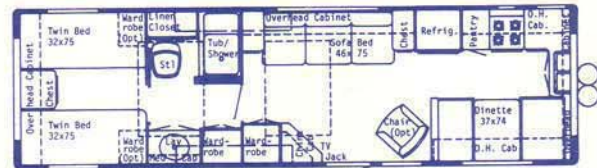
27' Center Bath • Available Options D, Q, P KL, KA



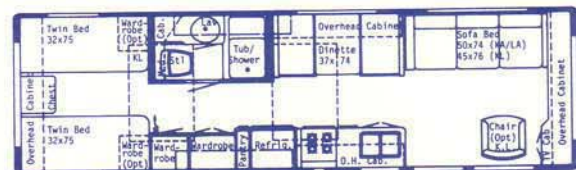
29' Front Kitchen Dinette • Available Options D, Q, F KL



29' Center Bath Dinette • Available Options D, Q, P, F KL, KA



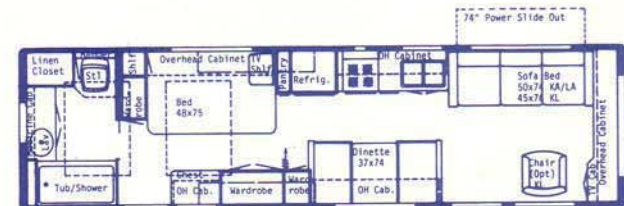
31' Front Kitchen Dinette • Available Options D, Q, F KL



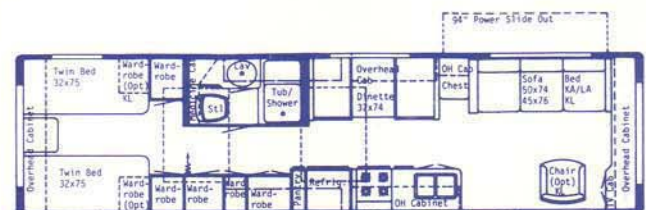
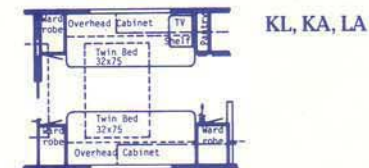
31' Center Bath Dinette • Available Options D, Q, S, F KL, KA, LA



33' Center Bath Dinette • Available Options D, Q, S, F KL, KA, LA



33' Rear Bath Dinette • Available Options S, F



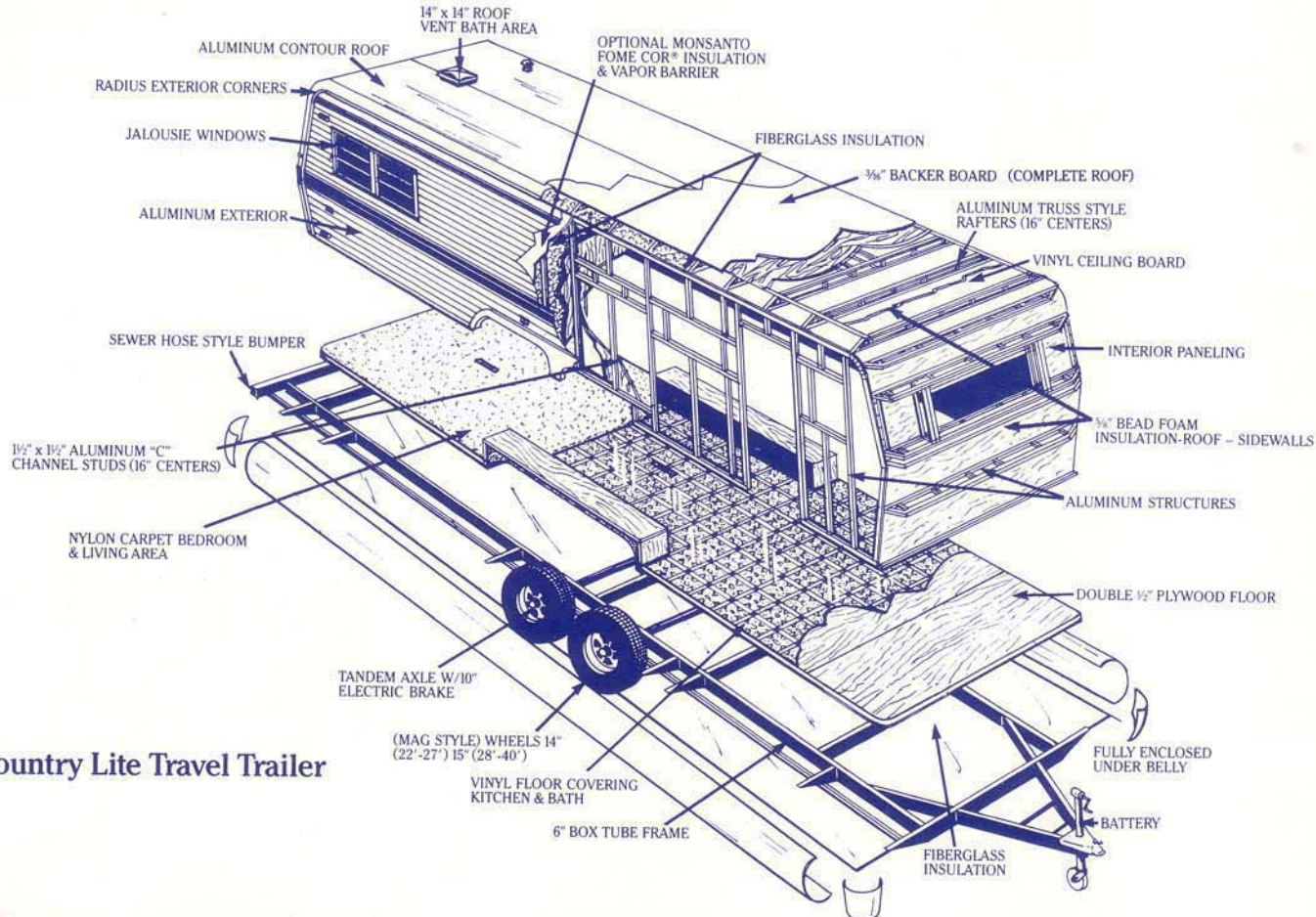
35' Center Bath Dinette • Available Options S, F



Optional Larger Window
KL, KA, LA



Optional Door



Kountry Lite Travel Trailer

TRAVEL TRAILER STANDARDS/OPTIONS

Retail Cost	KL	KA	LA	HEATING, AIR CONDITIONING & GAS
	S	NA	NA	Electronic Ignit. Furnace 25M (20'-24')
	S	S	NA	Electronic Ignit. Furnace 32M (25'-30')
	S	S	S	Electronic Ignit. Furnace 35M (31'-35')
\$29	O	O	O	Next Size Larger Furnace ILO of Std.
	NA	S	S	Under Floor Ducted Heat
	S	NA	NA	Above Floor Ducted Heat
\$861	NA	O	S	13.5 Central Air Cond. (1)
\$795	NA	O	O	Extra 13.5 Central Air Cond. w/Wiring
\$795	O	O	NA	13.5 Reg. Air Cond.
\$56	O	O	NA	Heat Strip for Reg. Air Cond.
\$0	NA	NA	O	13.5 Reg. Air Cond. w/Heat Strip ILO Central
	S	S	NA	Wire for Reg. Air Cond.
\$56	O	O	O	Wire for Extra Reg. Air Cond.
	S	NA	NA	2 - 20# Steel LP Gas Bottles w/Manual Reg.
	NA	S	NA	2 - 30# Steel LP Gas Bottles w/Automatic Reg.
\$47	O	NA	NA	2 - 30# Steel LP Gas Bottles w/Automatic Reg. ILO 20#
\$86	O	NA	NA	2 - 40# Steel LP Gas Bottles w/Automatic Reg. ILO 20#
\$47	NA	O	NA	2 - 40# Steel LP Gas Bottles w/Automatic Reg. ILO 30#
	NA	NA	S	2 - 40# Steel LP Gas Bottles w/Automatic Reg.
\$46	NA	O	O	LP See Level Gauges (set of 2)
\$55	O	O	S	LP Leak Detector
\$23	O	S	S	Gas Bottle Light
	S	NA	NA	Gas Bottle Cover - Vinyl

APPLIANCES

	S	NA	NA	RV106 Sibir Refrigerator 2-Way
\$219	O	NA	NA	RV108 Sibir Refrigerator 2-Way ILO Sibir RV106
	NA	NA	S	Dometic 1303 AES Refrigerator
	NA	S	NA	Dometic 1303 AES Refrigerator (30'-40')
	NA	S	NA	Dometic 763 AES (24'-29')
\$725	O	NA	NA	Dometic 1303 AES ILO Sibir RV106
\$200	NA	O	NA	Dometic 1303 AES ILO 763 (24'-29')
	S	NA	NA	18" 4-Burner Range w/Top Pilot/Oven
	NA	S	S	22" 4-Burner Range w/Top Pilot/Oven
	S	S	S	Range Hood w/Light & Fan
\$37	O	S	S	Bi-Fold Range Cover
\$459	O	O	NA	Microwave Oven
\$922	O	O	S	Spacemaker Microwave Oven JVM-48
\$40	O	S	NA	Microwave Prep 16"H x 20"W
	S	S	S	Deep Dbl. Stainless Steel Sink
	NA	NA	S	Single Handle Mixing Faucet w/Spray Hose
	NA	S	NA	Single Handle Mixing Faucet
	S	NA	NA	Dbl. Handle Mixing Faucet
	NA	NA	S	Hardwood Sink Covers - 2
	S	S	NA	Laminated Sink Cover - 1
	S	S	S	Large Lavatory Sink
	S	NA	NA	ABS Tub/Shower w/Curtain (except garden tub)
\$147	O	NA	NA	ABS Tub/Shower Surround (except garden tub)
\$351	O	S	S	Full Fiberglass Tub/Shower w/Door or Curtain
\$35	O	O	S	Clothes Rod in Tub/Shower (except garden tub)

Retail Cost	KL	KA	LA	APPLIANCES (Con't)
	S	S	S	Decorative Lavatory Faucet
	S	S	S	Decorative Shower Faucet
	S	NA	NA	6 Gal. Gas Water Heater
\$195	O	NA	NA	6 Gal. Gas Water Heater w/Elect. Ign. ILO Std.
	NA	S	S	10 Gal. Gas/Elect. Water Heater
\$149	O	NA	NA	10 Gal. Gas/Elect. Water Heater ILO Std.
\$70	O	O	S	Electronic Reignitor (for 10 gal. water heater)
\$44	O	O	S	Water Heater Bypass Kit
\$147	O	O	O	Water Purifier
\$676	NA	NA	S	Ice Maker
\$410	NA	O	S	Nutone Food Center (Blender & Mixer)
\$105	O	O	S	Portable Gas Grill
\$193	O	O	S	Portable Vacuum System
\$960	O	O	O	Washer & Dryer
\$200	O	O	O	Washer/Dryer Prep (plumbing, elec. recept., shelf)

AWNINGS, DOORS, VENTS & WINDOWS

	S	S	S	Front Travel Awning
\$120	O	NA	NA	Rear Travel Awning (where applic.)
\$222	NA	O	S	Recessed Rear Travel Awning (where applic.)
\$632	O	O	NA	Side Awning (A & E 8000)
	NA	NA	S	Side Awning (A & E 9000)
\$86	O	O	O	Center Support for Side Awning
\$204	NA	O	O	Exterior Window Shades (off door side)
	NA	S	S	30" Entrance Door w/Flush Latch & Dead Bolt Lock
	S	NA	NA	26" Entrance Door
\$77	NA	NA	O	26" Secondary Door (where applic.)
\$239	O	O	NA	24" Secondary Door (where applic.)
	S	S	S	Grab Handle
\$40	O	NA	NA	Dead Bolt Lock (each)
\$31	O	O	S	Door Bell
	NA	NA	S	Wood Folding Door (where applic.)
	NA	S	NA	Woven Folding Door (where applic.)
	S	NA	NA	Vinyl Folding Door (where applic.)
	NA	S	S	Power Roof Vent in Bath Area w/Wall Switch
	S	NA	NA	Power Roof Vent in Bath Area
\$81	O	O	O	Power Roof Vent
\$50	O	O	O	Non-Power Roof Vent
\$485	O	S	S	Rad. Tint Torque Safety Glass Windows (Hehr) (must opt. NJ)
	S	NA	NA	Brown Square Torque Reg. Glass Window (Hehr)
	S	NA	NA	30" x 42" Picture Window at Dinette - Square
	NA	S	S	30" x 48" Picture Window at Dinette
	NA	S	NA	48" x 36" Picture Window Door Side - Radius (31'-40')
	NA	S	NA	48" x 24" Picture Window Door Side - Radius (25'-29')
\$166	O	O	NA	48" x 24" Picture Window - Radius Only (each)
\$198	O	O	NA	48" x 36" Picture Window - Radius Only (each)
\$209	O	O	NA	48" x 48" Picture Window - Radius Only (each)
\$150	O	NA	NA	48" x 36" Picture Window - Square (each)
\$166	O	NA	NA	48" x 24" Picture Window - Square (each)

TRAVEL TRAILER STANDARDS/OPTIONS

Retail Cost	KL	KA	LA	STORM WINDOWS
\$432	NA	O	O	Storm Window Set (25'-29')
\$535	NA	O	O	Storm Window Set (31'-40')
\$68	NA	O	NA	Storms for Slide Out
CABINETS & FURNITURE				
\$0	S	S	S	Twin or Double Bed
\$60	O	O	O	Queen Bed (where applic.)
	S	S	S	Decorative Headboards (where applic.)
	S	S	S	Night Stand (1 for TB; 2 for DBL)
	S	S	S	Free Standing Sofa Bed (see floor plan)
	S	S	NA	Built in Sofa Bed (see floor plan)
\$0	NA	O	O	64" Sofa ILO Std.
\$213	O	NA	NA	Stationary Bunk w/Poly Foam Matt. 32"
\$307	NA	O	NA	Stationary Bunk w/Poly Foam Matt. 32"
\$352	O	NA	S	Free Standing Swivel Rocker Chair(s) (see floor plan)
\$0	NA	O	NA	Free Standing Swivel Rocker Chair(s) ILO of Std.
\$217	O	NA	NA	Free Standing Pedestal Chair
\$384	NA	S	NA	Free Standing Pedestal Chair (1 or 2 see floor plan)
\$384	NA	O	NA	Free Standing Pedestal Chair
\$64	O	O	O	Wood Folding Chair
	S	S	NA	Wall Mount Table (see floor plan)
\$136	O	O	O	Extra Wall Mount Table
\$198	O	O	S	Hi-Lo Table
\$116	O	O	NA	Hi-Lo Table ILO Wall Table
\$198	NA	NA	O	Extra Hi-Lo Table
\$53	S	S	S	Dinette w/Flex-a-lator (see floor plan)
\$0	O	O	O	Omit Dinette and Install Table Height Bar
\$0	O	O	O	Free Standing Dinette w/2 Chairs ILO Built In
\$44	O	S	NA	Access Doors under Dinette
	NA	NA	S	Access Drawers or Doors under Dinette
\$40	O	O	O	Counter Top Extension (where applic.)
	S	NA	NA	Wood Grain Cabinetry w/Complimentary Scroll
	NA	S	S	Oak Cabinetry w/Raised Panel Doors
\$1,476	NA	NA	O	Walnut Cabinetry w/Raised Panel Doors
	S	S	S	Pull-out Pantry (see floor plan)
	NA	S	S	Silverware Drawer
	S	S	S	Clothes Hamper (see floor plan)
	S	S	S	Medicine Cabinet
	S	S	S	Towel Ring, Soap Dish & Tissue Holder
\$44	O	S	S	Towel Rack in Bath Area
\$125	O	O	O	Extra Overhead Cabinet (each)
\$70	O	S	S	Shirt Wardrobe (where applic.) (each)
\$298	S	S	S	Bookcase Front Angle Cab. w/TV Shelf (where applic.)
\$241	O	O	O	Upper/Lower Bookcase Cab. (where applic.)
\$257	O	O	O	Sofa Across Front ILO Side (option S)
ELECTRICAL & LIGHTING EQUIPMENT				
\$320	O	S	S	AM/FM Stereo w/Cass. 6 Speakers (CB Models)
\$301	O	S	S	AM/FM Stereo w/Cass. 4 Speakers (except CB Models)
\$20	O	O	O	Shut-off Switch for Bedroom Speakers
	S	NA	NA	Wire for Stereo
\$101	O	NA	NA	Radio Antenna w/4 Speakers
\$31	O	S	S	Radio Antenna
\$42	O	S	NA	Battery Clock
\$632	O	O	S	Color TV AC/DC
\$59	O	S	S	TV Shelf & Remote Wall Switch (bedroom)
\$198	O	S	S	TV Antenna w/2 Jacks
\$81	O	O	S	Hook up for Cable TV
	S	NA	NA	Incandescent 12 Volt Lighting
	NA	S	S	Fluorescent 12 Volt Lighting
	NA	NA	S	Polished Brass/Crystal Block Ceiling Fixture
	NA	S	NA	Swag Light
	NA	S	S	Automatic Wardrobe Lights
	S	S	S	Porch Light w/Inside Switch
\$72	O	O	O	Exterior Security Lights (2)
\$47	O	O	O	Wire for Telephone
\$114	O	O	O	Intercom System
	NA	NA	S	Super Deluxe Monitor Panel w/Clock
\$191	O	S	NA	Deluxe Monitor Panel
	S	S	S	Smoke Detector
	S	S	NA	Fire Extinguisher 5 BC
	NA	NA	S	Fire Extinguisher 10 BC
\$11	O	O	NA	Fire Extinguisher 10 BC ILO 5 BC
\$2,035	O	O	O	2.5 kw LP. Gen. w/1 Remote Sw. & Auto Changeover (Kohler)
	S	S	S	1 - 110v GFI Interior Recept.
	S	S	S	Exterior Recept.
	S	S	NA	1 - 80 AMP Battery
\$26	O	O	NA	1 - 80 AMP Deep Cycle Bat. ILO Std. (Sears Die Hard)
	NA	NA	S	1 - 80 AMP Deep Cycle Bat. (Sears Die Hard)
\$145	O	O	O	2 - 80 AMP Deep Cycle Bat. ILO Std. (Sears Die Hard)
	NA	S	S	Slide Out Battery Box
	S	S	S	40 AMP Converter w/Charger
	S	S	S	30 AMP Service
\$173	O	O	O	50 AMP Service
\$18	O	O	S	Connector Plug & Bracket for Tow Vehicle
INTERIORS				
\$878	NA	O	NA	"Kountry Bonnet by Bonnie" Interior (w/94" slide out only)
	NA	S	S	Carpet w/Pad Throughout
\$18	O	NA	NA	Carpet w/Pad (per ft.)
	S	NA	NA	Carpet w/Pad in Bedroom & Living Room
	S	NA	NA	Vinyl Floor Covering (except br./living room)

Retail Cost	KL	KA	LA	INTERIORS (Con't)
\$0	NA	O	O	Vinyl Floor Covering ILO of Carpet
	NA	NA	S	Oak Hardwood Paneling
	NA	S	NA	Vinyl/Clad Oak Paneling
	S	NA	NA	Vinyl/Clad Pecan Paneling
\$66	O	S	NA	Wainscoting in Living Room
\$0	O	O	O	Wood Grain Paneling Throughout
	NA	NA	S	Silk Textured Feature Wall in Living Area
	S	S	S	Light Colored Textured Paneling in Bedroom
	S	S	S	Decorative Paneling in Bath
	NA	NA	S	Cushioned Entrance Door Header
	NA	NA	S	Woven Soft Touch Ceiling
	S	S	NA	Vinyl/Clad Ceiling
	NA	S	S	Decorative Etched Glass Doors
	NA	S	NA	Soft Shade Blinds w/Tie Back Drapes/Val. (liv. area)
	NA	S	NA	Coord. Roller Shades w/Tie Back Drapes/Val. (bedroom)
	S	NA	NA	Textured Roller Shades w/Tie Back Drapes/Val.
\$122	NA	O	S	Woven Wood Shades w/Tie Back Drapes/Val.
	S	S	S	Mini Blinds Kitchen/Bath Windows
	NA	NA	S	Queen/Db'l./Twin Quilted Bedspread(s) w/Matching Shams
\$136	NA	O	NA	Queen/Db'l./Twin Quilted Bedspread(s) w/Rev. Sham
\$83	O	NA	NA	Queen/Db'l./Twin Quilted Bedspread(s)
	S	S	NA	Wood Framed Decorative Mirror
	NA	NA	S	Original Oil Painting
WATER SYSTEMS				
\$40	O	S	S	Air Accumulator Tank
	S	S	S	Demand Water System and 5/8" Water Lines
	S	S	S	City Water Hook-Up
	S	S	S	48 Gal. Water Cap.
	S	S	S	35 Gal. Sewage Holding Tank
	S	S	S	35 Gal. Gray Water
EXTERIOR				
	NA	S	S	Fiberglass Front & Rear Caps
\$29	NA	O	S	Fiberglass Sides (per foot)
\$16	NA	NA	S	Fiberglass Roof (per foot)
	NA	S	S	Polished Auto Style Rear Bumper
\$44	O	NA	NA	Aluminum Bumper Cover
\$191	NA	O	S	Pull Down Vinyl Stone Guard
	NA	S	S	Concealed Gas Bottles
\$253	NA	S	S	Ext. Storage Slide Out Drawer 48"
\$226	NA	O	S	Ext. Storage Slide Out Drawer 29"
\$226	NA	O	S	Extra Ext. Storage Slide Out Drawer 29"
\$173	O	O	O	Roof Rack & Split Ladder
\$384	O	O	O	Roof Storage Pod 21 cu. ft.
\$246	O	O	O	Roof Storage Pod 10 cu. ft.
RUNNING GEAR & CONSTRUCTION				
	S	S	S	Aluminum Structure (16" centers)
\$0	NA	O	NA	Wood Structure ILO Aluminum
	NA	S	S	Frame Size 8" I-Beam
	S	NA	NA	Frame Size 6" Tube
\$79	NA	S	NA	Fome-Cor Insulation Exterior Sidewalls
\$46	NA	S	S	Fome-Cor Insulation Exterior Roof
\$219	O	NA	NA	Fome-Cor Insulation Complete Exterior
	S	S	S	Fiberglass Insul. in Sidewalls, Roof & Floor - R5
\$90	O	S	S	Additional R5 Fiberglass Insul. in Roof & Floor
	S	S	S	Laminated 5/8" Foam Insul. Sidewalls & Ceiling
	NA	S	S	Enclosed Underbelly w/Lam. 5/8" Foam
	S	NA	NA	Enclosed Underbelly
	S	S	S	1" Laminated Plywood Floor
\$31	O	S	NA	Double Entrance Step
	S	NA	S	Single Entrance Step
\$60	O	S	S	Shock Absorbers (22'-37')
	S	NA	NA	Drop Axle w/10" Electric Brakes
	NA	S	S	Drop Axle w/12" Electric Brakes
\$0	O	NA	NA	Straight Axle w/10" Brakes
\$0	NA	O	O	Straight Axle w/12" Brakes
	NA	NA	S	Radial Tires
	NA	S	NA	8.55 x 15 White Walls
	S	NA	NA	F78 x 14 Tires (22'-27')
	S	NA	NA	7.75 x 15ST Tires (28'-40')
	NA	NA	S	15" Aluminum Wheels
	NA	S	NA	15" Steel Wheels
	S	NA	NA	14" Spoke Wheels (22'-27')
	S	NA	NA	15" Spoke Wheels (28'-40')
\$509	NA	S	NA	Chrome Styled Wheel Covers
\$129	O	NA	NA	Spare Tire, Wheel, in Slide Out Tray
\$42	O	NA	NA	Spare Tire Carrier
\$51	O	O	S	Safety Chains
\$290	O	S	S	Stabilizer Jacks (set of 4)
\$145	O	O	O	Extra Set of Stabilizer Jacks (set of 2)
\$323	O	O	S	Power Hitch Jack
\$15	O	O	NA	Wire for Power Jack(s)
MISCELLANEOUS				
\$2,659	NA	O	NA	74" Power Slide Out, Lights, Rcpts., Hi-Lo Tble. & D/Leaf
\$2,833	NA	O	NA	94" Power Slide Out, Lights, Rcpts., Hi-Lo Tble. & D/Leaf
\$53	NA	O	NA	Hurricane Tie Down Brackets & Straps - 6
\$665	O	O	O	Customer Pick Up

Fifth Wheels

The towables with room-a-plenty!

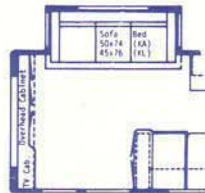
To begin with, there's the power slide-out, optional on the Kountry Aire and new this year as an option on the Kountry Lite. It's just like adding another room! And then there's the power-raised-roof option, also new for this year. It adds "standing room" in your Fifth Wheel bedroom.

To complete the sense of spaciousness, there are plenty of other thoughtful touches. A full tub and shower in the bathroom; a comfortable dinette with back bar for extra serving space; and excellent interior and exterior storage space, including exterior slide-out drawers.

And to make these rooms truly irresistible, there's plush carpeting throughout with your choice of exciting new decorator fabrics.

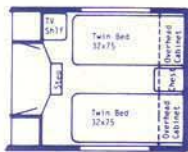


Rear Kitchen Power Slide Out Option



Power Slide Out Option

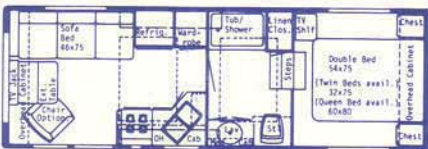
*Power Slide Outs may require cabinet changes
**Bookcase and TV Cabinet optional



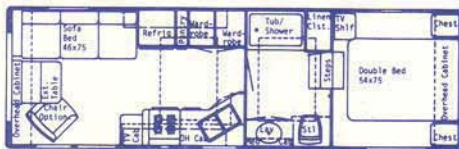
Option T



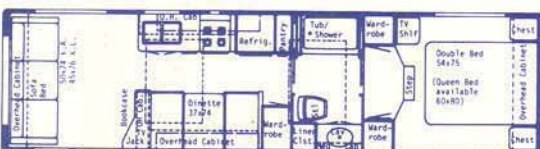
Option F • Free Standing Dinette Option



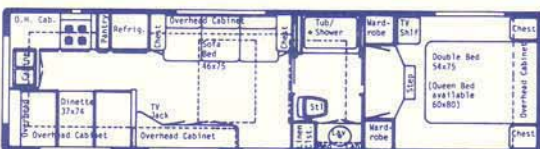
24' Walk Thru Raised Floor KL



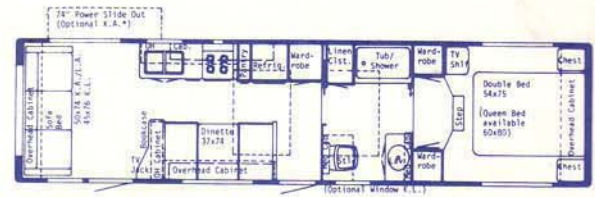
26' Walk Thru Raised Floor KL



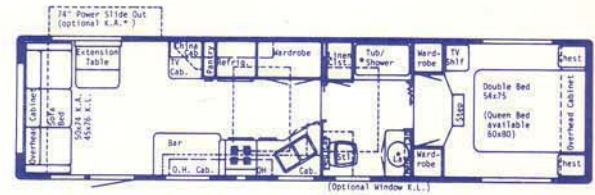
29' Walk Thru Raised Floor Dinette • Available Options F, T KL, KA



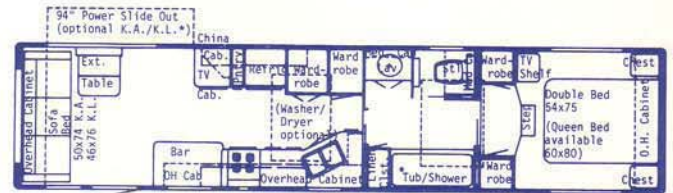
29' Walk Thru Rear Kitchen Dinette • Available Options F, T KL, KA



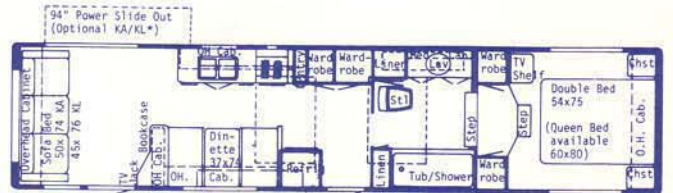
KL, KA, LA 32' Walk Thru Raised Floor Dinette • Available Options F, T



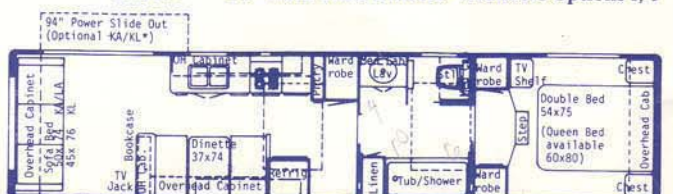
KL, KA 32' Walk Thru Raised Floor • Available Options T



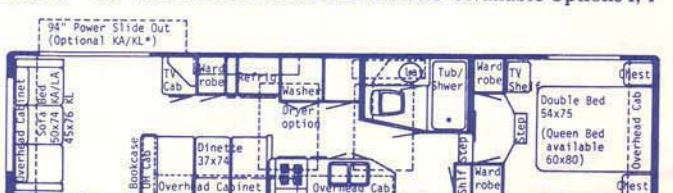
KL, KA 35' Walk Thru Raised Floor • Available Option T



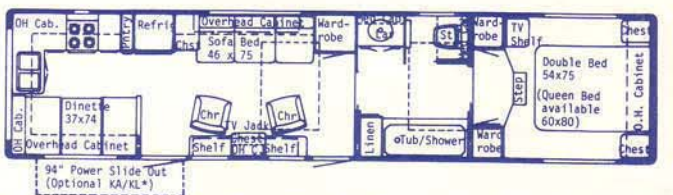
KL, KA 35' Walk Thru Dinette • Available Options F, T



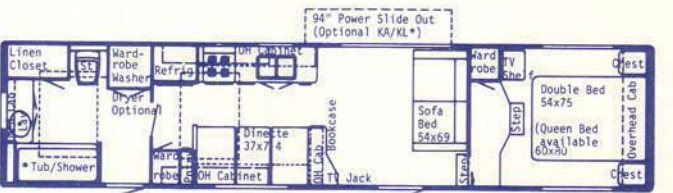
KL, KA, LA 35' Walk Thru Raised Floor Dinette • Available Options F, T



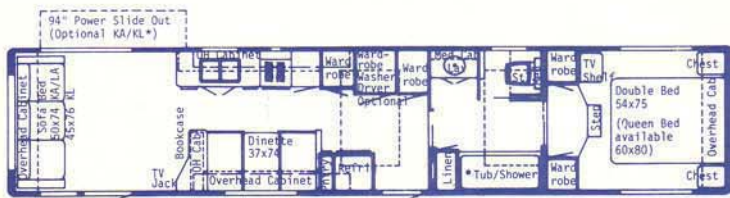
KL, KA, LA 35' Front Bath Dinette • Available Options F, T



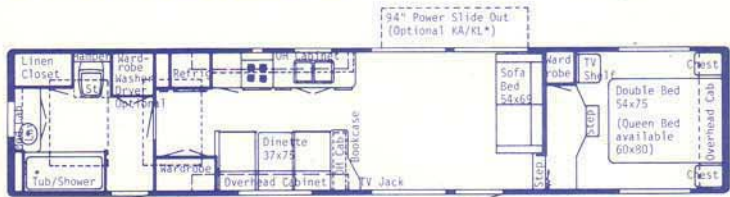
KL, KA 35' Walk Thru Rear Kitchen Dinette • Available Options F, T



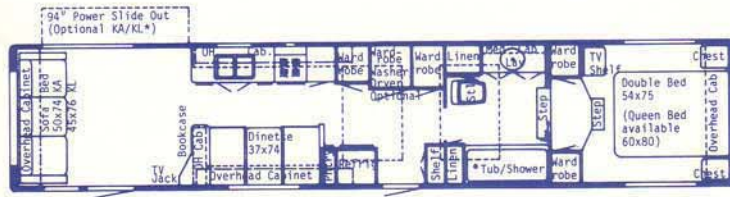
KL, KA, LA 35' Rear Bath Dinette • Available Options F, T



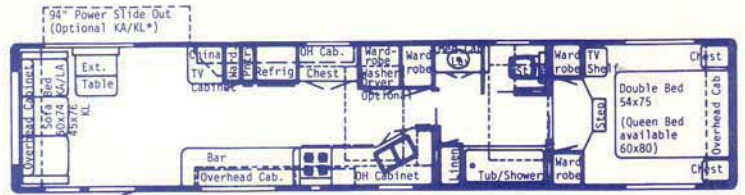
40' Walk Thru Raised Floor Dinette • Available Options F, T KL, KA, LA



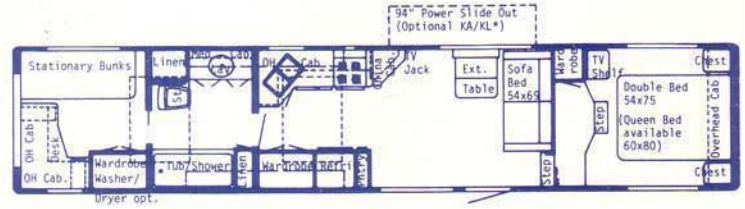
40' Rear Bath Dinette • Available Options F, T KL, KA, LA



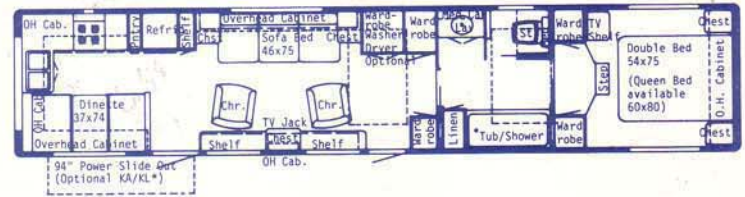
40' Walk Thru Dinette • Available Options F, T KL, KA



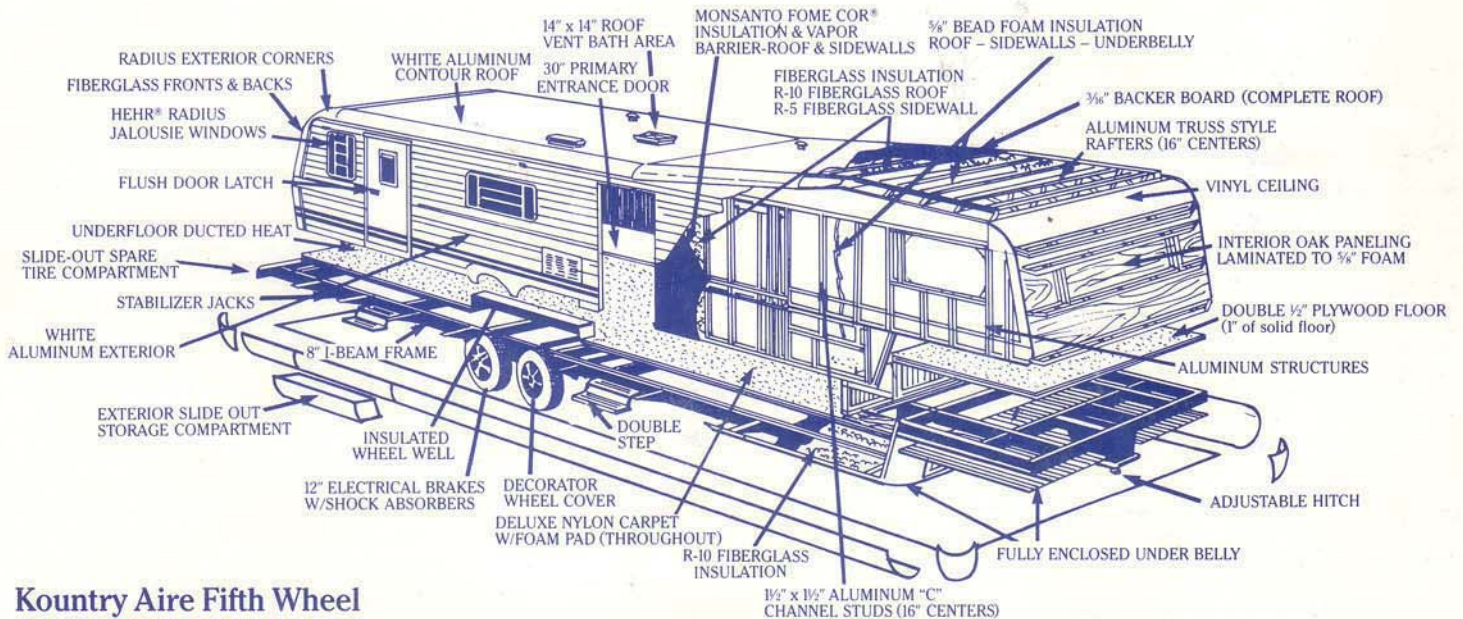
40' Walk Thru Raised Floor • Available Option T KL, KA, LA



40' Walk Thru Center Bath • Available Option T KL, KA



40' Walk Thru Rear Kitchen Dinette • Available Options F, T KL, KA



Kountry Aire Fifth Wheel

FIFTH WHEEL STANDARDS/OPTIONS

Retail Cost	KL	KA	LA	HEATING, AIR CONDITIONING & GAS
	S	NA	NA	Electronic Ignit. Furnace 25M (20'-24')
	S	S	NA	Electronic Ignit. Furnace 32M (25'-30')
	S	S	S	Electronic Ignit. Furnace 35M (31'-35')
	S	S	S	Electronic Ignit. Furnace 41M (36'-40')
\$29	O	O	O	Next Size Larger Furnace ILO of Std.
	NA	S	S	Under Floor Ducted Heat
	S	NA	NA	Above Floor Ducted Heat
\$861	NA	O	S	13.5 Central Air Cond. (1)
\$795	NA	O	O	Extra 13.5 Central Air Cond. w/Wiring
\$795	O	O	NA	13.5 Reg. Air Cond.
\$56	O	O	NA	Heat Strip for Reg. Air Cond.
\$0	NA	NA	O	13.5 Reg. Air Cond. w/Heat Strip ILO Central
	S	S	NA	Wire for Reg. Air Cond.
\$56	O	O	O	Wire for Extra Reg. Air Cond.
	S	NA	NA	2-20# Steel LP Gas Bottles w/Manual Reg.
	NA	S	NA	2-30# Steel LP Gas Bottles w/Automatic Reg.
\$47	O	NA	NA	2-30# Steel LP Gas Bottles w/Automatic Reg. ILO 20#
\$86	O	NA	NA	2-40# Steel LP Gas Bottles w/Automatic Reg. ILO 20#
\$47	NA	O	NA	2-40# Steel LP Gas Bottles w/Automatic Reg. ILO 30#
	NA	NA	S	2-40# Steel LP Gas Bottles w/Automatic Reg.
\$46	NA	O	O	LP See Level Gauges (set of 2)
\$55	O	O	S	LP Leak Detector
				APPLIANCES
\$219	S	NA	NA	RV106 Sibir Refrigerator 2-Way
	O	NA	NA	RV108 Sibir Refrigerator 2-Way ILO Sibir RV106
	NA	NA	S	Dometic 1303 AES Refrigerator
	NA	S	NA	Dometic 1303 AES Refrigerator (30'-40')
	NA	S	NA	Dometic 763 AES (24'-29')
\$725	O	NA	NA	Dometic 1303 AES ILO Sibir RV106
\$200	NA	O	NA	Dometic 1303 AES ILO 763 (24'-29')
	S	NA	NA	18" 4-Burner Range w/Top Pilot/Oven
	NA	S	S	22" 4-Burner Range w/Top Pilot/Oven
	S	S	S	Range Hood w/Light & Fan
\$37	O	S	S	Bi-Fold Range Cover
\$459	O	O	NA	Microwave Oven
\$922	O	O	S	Spacemaker Microwave Oven JVM-48
\$40	O	S	NA	Microwave Prep 16" H x 20" W
	S	S	S	Deep Dbl. Stainless Steel Sink
	NA	NA	S	Single Handle Mixing Faucet w/Spray Hose
	NA	S	NA	Single Handle Mixing Faucet
	S	NA	NA	Dbl. Handle Mixing Faucet
	NA	NA	S	Hardwood Sink Covers - 2
	S	S	NA	Laminated Sink Cover - 1
	S	S	S	Large Lavatory Sink
	S	NA	NA	ABS Tub/Shower w/Curtain (except garden tub)
\$147	O	NA	NA	ABS Tub/Shower Surround (except garden tub)
\$351	O	S	S	Full Fiberglass Tub/Shower w/Door or Curtain
\$35	O	O	S	Clothes Rod in Tub/Shower (except garden tub)
	S	S	S	Decorative Lavatory Faucet
	S	S	S	Decorative Shower Faucet
	S	NA	NA	6 Gal. Gas Water Heater
\$195	O	NA	NA	6 Gal. Gas Water Heater w/Elect. Ign. ILO Std.
	NA	S	S	10 Gal. Gas/Elect. Water Heater
\$149	O	NA	NA	10 Gal. Gas/Elect. Water Heater ILO Std.
\$70	O	O	S	Electronic Reignitor (for 10 gal. water heater)
\$44	O	O	S	Water Heater Bypass Kit
\$147	O	O	O	Water Purifier
\$676	NA	NA	S	Ice Maker
\$410	NA	O	S	Nutone Food Center (Blender & Mixer)
\$105	O	O	S	Portable Gas Grill
\$193	O	O	S	Portable Vacuum System
\$960	O	O	O	Washer & Dryer
\$200	O	O	O	Washer/Dryer Prep (plumbing, elec. recept, shelf)
				AWNINGS, DOORS, VENTS & WINDOWS
\$340	O	O	O	Front Window & Awning
\$120	O	NA	NA	Rear Travel Awning (where applic.)
\$222	NA	O	S	Recessed Rear Travel Awning (where applic.)
\$632	O	O	NA	Side Awning (A & E 8000)
	NA	NA	S	Side Awning (A & E 9000)
\$86	O	O	O	Center Support for Side Awning
\$204	NA	O	O	Exterior Window Shades (off door side)
	NA	S	S	30" Entrance Door w/Flush Latch & Dead Bolt Lock
	S	NA	NA	26" Entrance Door
\$77	NA	NA	O	26" Secondary Door (where applic.)
\$239	O	O	NA	24" Secondary Door (where applic.)
	S	S	S	Grab Handle
\$40	O	NA	NA	Dead Bolt Lock (each)
\$31	O	O	S	Door Bell
	NA	NA	S	Wood Folding Door (where applic.)
	NA	S	NA	Woven Folding Door (where applic.)
	S	NA	NA	Vinyl Folding Door (where applic.)
	NA	S	S	Power Roof Vent in Bath Area w/Wall Switch
	S	NA	NA	Power Roof Vent in Bath Area
\$81	O	O	O	Power Roof Vent
\$50	O	O	O	Non-Power Roof Vent
\$485	O	S	S	Rad. Tint Torque Safety Glass Windows (Hehr) (must opt NJ)
	S	NA	NA	Brown Square Torque Reg. Glass Window (Hehr)
\$110	O	S	S	15" x 24" Frosted Bathroom Window (where applic.)
	S	NA	NA	30" x 42" Picture Window at Dinette - Square

Retail Cost	KL	KA	LA	AWNINGS, DOORS, VENTS & WINDOWS (Con't)
	NA	S	S	30" x 48" Picture Window at Dinette
	NA	S	NA	48" x 36" Picture Window Door Side - Radius (31'-40')
	NA	S	NA	48" x 24" Picture Window Door Side - Radius (25'-29')
\$166	O	O	NA	48" x 24" Picture Window - Radius Only (each)
\$198	O	O	NA	48" x 36" Picture Window - Radius Only (each)
\$209	O	O	NA	48" x 48" Picture Window - Radius Only (each)
\$150	O	NA	NA	48" x 36" Picture Window - Square (each)
\$166	O	NA	NA	48" x 24" Picture Window - Square (each)
				STORM WINDOWS
\$432	NA	O	O	Storm Window Set (25'-29')
\$535	NA	O	O	Storm Window Set (31'-40')
\$68	NA	O	NA	Storms for Slide Out
				CABINETS & FURNITURE
\$0	S	S	O	Twin or Double Bed
\$60	O	O	S	Queen Bed (where applic.)
	S	S	S	Decorative Headboards (where applic.)
	S	S	S	Night Stand (1 for TB; 2 for DBL)
	S	S	S	Free Standing Sofa Bed (see floor plan)
	S	S	NA	Built in Sofa Bed (see floor plan)
\$0	NA	O	O	64" Sofa ILO Std.
\$213	O	NA	NA	Stationary Bunk w/Poly Foam Matt. 32"
\$307	NA	O	NA	Stationary Bunk w/Poly Foam Matt. 32"
\$352	O	O	S	Free Standing Swivel Rocker Chair(s) (see floor plan)
\$0	NA	O	NA	Free Standing Swivel Rocker Chair(s) ILO of Std.
\$217	O	NA	NA	Free Standing Pedestal Chair
\$384	NA	S	NA	Free Standing Pedestal Chair (1 or 2 see floor plan)
\$384	NA	O	NA	Free Standing Pedestal Chair
\$64	O	O	O	Wood Folding Chair
	S	S	NA	Wall Mount Table (see floor plan)
\$136	O	O	O	Extra Wall Mount Table
\$198	O	O	S	Hi-Lo Table
\$116	O	O	NA	Hi-Lo Table ILO Wall Table
\$198	NA	NA	O	Extra Hi-Lo Table
\$53	S	S	S	Dinette w/Flex-a-lator (see floor plan)
\$0	O	O	O	Omit Dinette and Install Table Height Bar
\$0	O	O	O	Free Standing Dinette w/2 Chairs ILO Built In
\$44	O	S	NA	Access Doors under Dinette
	NA	NA	S	Access Drawers or Doors under Dinette
\$40	O	O	O	Counter Top Extension (where applic.)
	S	NA	NA	Wood Grain Cabinetry w/Complimentary Scroll
	NA	S	S	Oak Cabinetry w/Raised Panel Doors
\$1,476	NA	NA	O	Walnut Cabinetry w/Raised Panel Doors
	S	S	S	Pull-out Pantry (see floor plan)
	NA	S	S	Silverware Drawer
	S	S	S	Clothes Hamper (see floor plan)
	S	S	S	Medicine Cabinet
	S	S	S	Towel Ring, Soap Dish & Tissue Holder
\$44	O	S	S	Towel Rack in Bath Area
\$125	O	O	O	Extra Overhead Cabinet (each)
\$298	O	O	O	Bookcase Front Angle Cab. w/TV Shelf (where applic.)
\$241	O	O	O	Upper/Lower Bookcase Cab. (where applic.)
\$351	O	O	O	Extra W/R, Door Side w/Angle Upper/Lower Cab. (RB & CB)
\$0	O	O	O	Omit Front Door Install W/R (WT Only)
\$149	O	O	O	Wall w/Pocket Door in Front of Lav & Stool
				ELECTRICAL & LIGHTING EQUIPMENT
\$320	O	S	S	AM/FM Stereo w/Cass. 6 Speakers (CB Models)
\$301	O	S	S	AM/FM Stereo w/Cass. 4 Speakers (except CB Models)
\$20	O	O	O	Shut-off Switch for Bedroom Speakers
	S	NA	NA	Wire for Stereo
\$101	O	NA	NA	Radio Antenna w/4 Speakers
\$31	O	S	S	Radio Antenna
\$42	O	S	NA	Battery Clock
\$632	O	O	S	Color TV AC/DC
\$59	O	S	S	TV Shelf & Remote Wall Switch (bedroom)
\$198	O	S	S	TV Antenna w/2 Jacks
\$81	O	O	S	Hook up for Cable TV
	S	NA	NA	Incandescent 12 Volt Lighting
	NA	S	S	Fluorescent 12 Volt Lighting
	NA	NA	S	Polished Brass/Crystal Block Ceiling Fixture
	NA	S	NA	Swag Light
	NA	S	S	Automatic Wardrobe Lights
	S	S	S	Porch Light w/Inside Switch
\$72	O	O	O	Exterior Security Lights (2)
\$47	O	O	O	Wire for Telephone
\$114	O	O	O	Intercom System
	NA	NA	S	Super Deluxe Monitor Panel w/Clock
\$191	O	S	NA	Deluxe Monitor Panel
	S	S	S	Smoke Detector
	S	S	NA	Fire Extinguisher 5 BC
	NA	NA	S	Fire Extinguisher 10 BC
\$11	O	O	NA	Fire Extinguisher 10 BC ILO 5 BC
\$374	NA	O	O	Double Automatic Electric Step ILO Std.
\$3,411	NA	O	O	7.0 kw Gen. w/1 Remote Sw. & Auto Changeover (Kohler)
\$3,937	NA	O	O	6.5 kw Gen. w/1 Remote Sw. & Auto Changeover (Onan)
\$2,294	O	O	O	4.5 kw Gen. w/1 Remote Sw. & Auto Changeover (Kohler)
\$2,508	O	O	O	4.0 kw Gen. w/1 Remote Sw. & Auto Changeover (Onan)
\$2,035	O	O	O	2.5 kw LP Gen. w/1 Remote Sw. & Auto Changeover (Kohler)
\$412	O	O	O	LP Gas Conversion for Gen. (except Emerald)
\$130	O	O	O	Gen. Prep (auto changeover, wire & door)

FIFTH WHEEL STANDARDS/OPTIONS

Retail Cost	KL	KA	LA	ELECTRICAL & LIGHTING EQUIPMENT (Con't)
\$26	S	S	S	1-110v GFI Interior Recept.
\$145	S	S	S	Exterior Recept.
	S	S	NA	1-80 AMP Battery
	O	O	NA	1-80 AMP Deep Cycle Bat. ILO Std. (Sears Die Hard)
	NA	NA	S	1-80 AMP Deep Cycle Bat. (Sears Die Hard)
	O	O	O	2-80 AMP Deep Cycle Bat. ILO Std. (Sears Die Hard)
	NA	S	S	Slide Out Battery Box
	S	S	S	40 AMP Converter w/Charger
	S	S	S	30 AMP Service
\$173	O	O	O	50 AMP Service
\$18	O	O	S	Connector Plug & Bracket for Tow Vehicle
INTERIORS				
\$878	NA	O	NA	"Kountry Bonnet by Bonnie" Interior (w/94" slide out only)
	NA	S	S	Carpet w/Pad Throughout
\$18	O	NA	NA	Carpet w/Pad (per ft.)
	S	NA	NA	Carpet w/Pad in Bedroom & Living Room
\$0	S	NA	NA	Vinyl Floor Covering (except br./living room)
	NA	O	O	Vinyl Floor Covering ILO of Carpet
	NA	NA	S	Oak Hardwood Paneling
	NA	S	NA	Vinyl/Clad Oak Paneling
	S	NA	NA	Vinyl/Clad Pecan Paneling
\$66	O	S	NA	Wainscoting in Living Room
\$0	O	O	O	Wood Grain Paneling Throughout
	NA	NA	S	Silk Textured Feature Wall in Living Area
	S	S	S	Light Colored Textured Paneling in Bedroom
	S	S	S	Decorative Paneling in Bath
	NA	NA	S	Cushioned Entrance Door Header
	NA	NA	S	Woven Soft Touch Ceiling
	S	S	NA	Vinyl/Clad Ceiling
\$768	O	O	NA	12" Raised Roof Option
\$1,975	O	O	NA	Power Raised Roof Option
	NA	S	S	Decorative Etched Glass Doors
	NA	S	NA	Soft Shade Blinds w/Tie Back Drapes/Val. (liv. area)
	NA	S	NA	Coord. Roller Shades w/Tie Back Drapes/Val. (bedroom)
	S	NA	NA	Textured Roller Shades w/Tie Back Drapes/Val.
\$122	NA	O	S	Woven Wood Shades w/Tie Back Drapes/Val.
	S	S	S	Mini Blinds Kitchen/Bath Windows
	NA	NA	S	Queen/Dbl./Twin Quilted Bedspread(s) w/Matching Shams
\$136	NA	O	NA	Queen/Dbl./Twin Quilted Bedspread(s) w/Rev. Sham
\$83	O	NA	NA	Queen/Dbl./Twin Quilted Bedspread(s)
	S	S	NA	Wood Framed Decorative Mirror
	NA	NA	S	Original Oil Painting
WATER SYSTEMS				
\$40	O	S	S	Air Accumulator Tank
	S	S	S	Demand Water System and 5/8" Water Lines
	S	S	S	City Water Hook-Up
	S	S	S	48 Gal. Water Cap.
	S	S	S	35 Gal. Sewage Holding Tank
	S	S	S	35 Gal. Gray Water
EXTERIOR				
	NA	S	S	Fiberglass Front & Rear Caps
\$29	NA	O	S	Fiberglass Sides (per foot)
\$16	NA	NA	S	Fiberglass Roof (per foot)

Retail Cost	KL	KA	LA	EXTERIOR (Con't)
	NA	S	S	Polished Auto Style Rear Bumper
\$44	O	NA	NA	Aluminum Bumper Cover
\$191	O	O	S	Pull Down Vinyl Stone Guard
	S	S	S	Concealed Gas Bottles
\$253	NA	S	S	Ext. Storage Slide Out Drawer 48"
\$226	NA	O	S	Ext. Storage Slide Out Drawer 29"
\$226	NA	O	S	Extra Ext. Storage Slide Out Drawer 29"
\$173	O	O	O	Roof Rack & Split Ladder
\$384	O	O	O	Roof Storage Pod 21 cu. ft.
\$246	O	O	O	Roof Storage Pod 10 cu. ft.
RUNNING GEAR & CONSTRUCTION				
	S	S	S	Aluminum Structure (16" centers)
\$0	NA	O	NA	Wood Structure ILO Aluminum
	NA	S	S	Frame Size 8" I-Beam
	S	NA	NA	Frame Size 6" Tube
\$79	NA	S	NA	Fome-Cor Insulation Exterior Sidewalls
\$46	NA	S	S	Fome-Cor Insulation Exterior Roof
\$219	O	NA	NA	Fome-Cor Insulation Complete Exterior
	S	S	S	Fiberglass Insul. in Sidewalls, Roof & Floor - R5
\$90	O	S	S	Additional R5 Fiberglass Insul. in Roof & Floor
	S	S	S	Laminated 5/8" Foam Insul. Sidewalls & Ceiling
	NA	S	S	Enclosed Underbelly w/Lam. 5/8" Foam
	S	NA	NA	Enclosed Underbelly
	S	S	S	1" Laminated Plywood Floor
\$31	S	S	S	Double Entrance Step
\$60	O	S	S	Shock Absorbers (22'-37')
\$89	O	S	S	Shock Absorbers (40')
\$0	S	NA	NA	Straight Axle w/10" Brakes
\$0	NA	S	S	Straight Axle w/12" Brakes
	NA	NA	S	Radial Tires
	NA	S	NA	8.55 x 15 White Walls
	S	NA	NA	F78 x 14 Tires (22'-27')
	S	NA	NA	7.75 x 15ST Tires (28'-40')
	NA	NA	S	15" Aluminum Wheels
	NA	S	NA	15" Steel Wheels
	S	NA	NA	14" Spoke Wheels (22'-27')
	S	NA	NA	15" Spoke Wheels (28'-40')
	NA	S	NA	Chrome Styled Wheel Covers
\$509	NA	S	S	Spare Tire, Wheel, in Slide Out Tray
\$129	O	NA	NA	Spare Tire, Wheel & Cover
\$42	O	NA	NA	Spare Tire Carrier
\$145	O	S	S	Stabilizer Jacks (set of 2)
\$145	O	O	O	Extra Set of Stabilizer Jacks (set of 2)
\$266	O	O	S	Power Hitch Jack(s)
\$15	O	O	NA	Wire for Power Jack(s)
\$258	O	O	S	48" or 54" Fifth Wheel Hitch Plate & Bracket
\$165	O	O	O	Install Fifth Wheel Hitch
MISCELLANEOUS				
\$2,659	NA	O	NA	74" Power Slide Out, Lights, Rcpts., Hi-Lo Tble. & D/Leaf
\$2,833	NA	O	NA	94" Power Slide Out, Lights, Rcpts., Hi-Lo Tble. & D/Leaf
\$3,370	O	NA	NA	94" Power Slide Out w/Dbl. Frame, Lights, Rcpts. (35' & 40')
\$53	NA	O	NA	Hurricane Tie Down Brackets & Straps - 6
\$665	O	O	O	Customer Pick Up

Mini Homes

The inviting homes on wheels!

Who says you can't take it with you? With standard features like wall-to-wall carpeting, an am/fm stereo cassette with four speakers, and a four-burner range in a fully equipped kitchen, this is indeed a home on wheels.

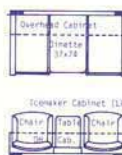
For added luxury in your living, select your choice of fine wood cabinetry, coordinated draperies, soft shades and decorator fabrics. Features like central air conditioning, an ice-maker, a portable gas grill and hook-up for cable television are all standard on London Aire products. Check specifications to see other availabilities.

Nor have we forgotten the comforts of home for the driver. Each Mini comes fully equipped with power steering, power brakes, cruise control and tilt steering wheel.

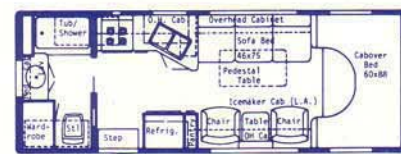
No doubt, you'll feel as if you never left home!



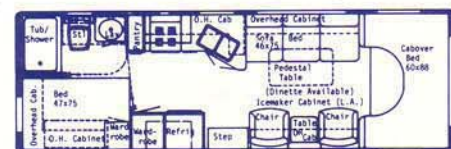
Option A



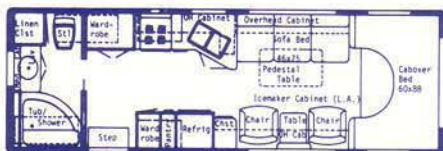
Option B



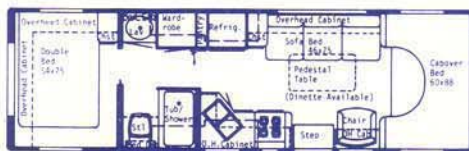
24' Rear Bath • Available Options A, B KL, KA, LA



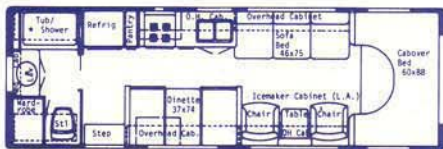
26' Side Bath KL, KA, LA



26' Rear Bath • Available Options A, B KL, KA, LA

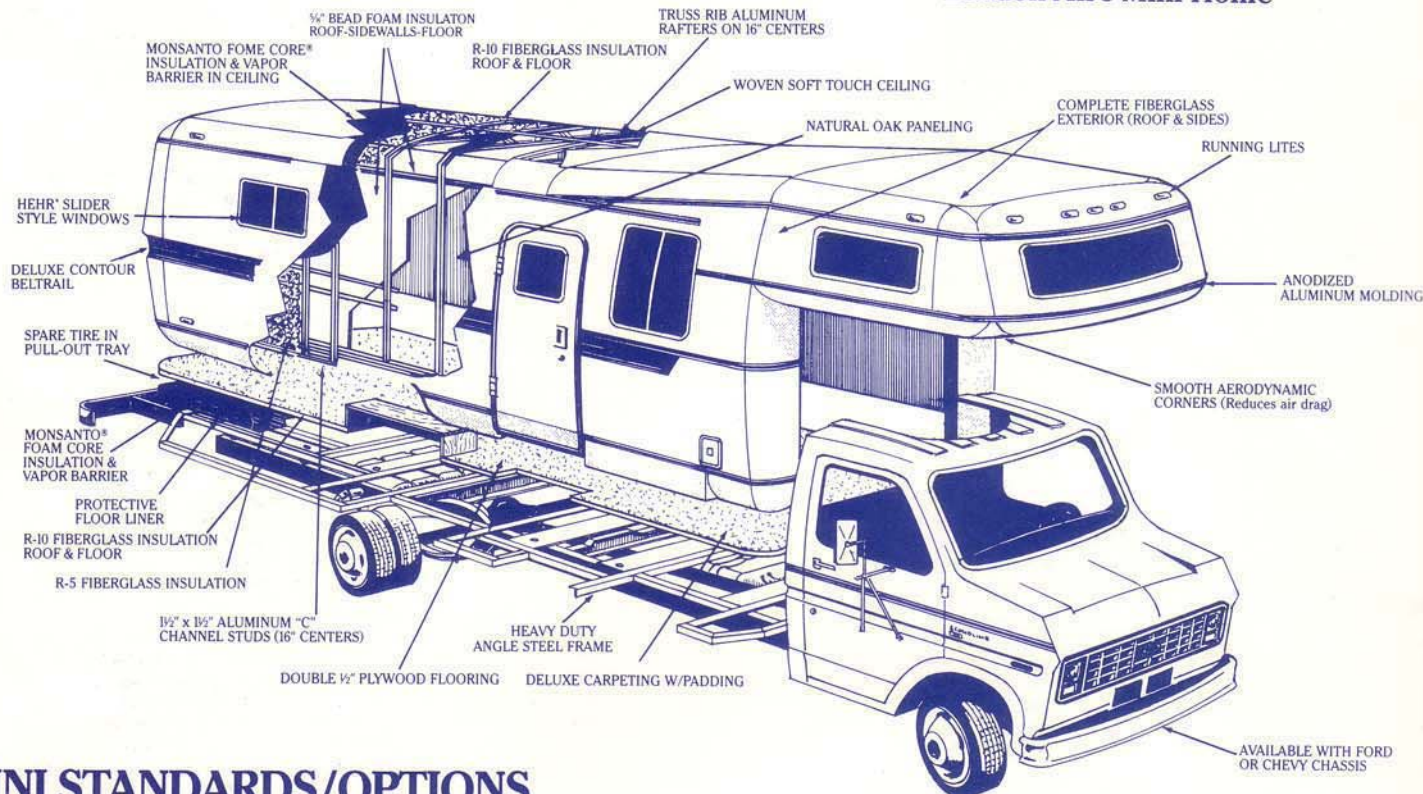


28' Walk Thru Center Bath KL, KA, LA



26' Rear Bath Dinette KL, KA, LA

London Aire Mini Home



MINI STANDARDS/OPTIONS

Retail Cost	KL	KA	LA	
	S	S	S	HEATING, AIR CONDITIONING & GAS
	S	S	S	Electronic Ignit. Furnace 25M (20'-24')
\$29	O	O	O	Electronic Ignit. Furnace 32M (25'-30')
	S	S	S	Next Size Larger Furnace ILO of Std.
	S	S	S	Under Floor Ducted Heat
\$861	NA	O	S	13.5 Central Air Cond. (1)
\$795	O	O	NA	13.5 Reg. Air Cond.
\$56	O	O	NA	Heat Strip for Reg. Air Cond.
\$0	NA	NA	O	13.5 Reg. Air Cond. w/Heat Strip ILO Central
	S	S	NA	Wire for Reg. Air Cond.
	S	S	NA	15 Gal. LP Gas Tank
\$285	O	O	S	41 Gal. LP Gas Tank
\$493	O	O	S	Dual Fuel Conversion - Ex. CA
\$55	O	O	S	LP Leak Detector
				APPLIANCES
\$219	S	NA	NA	RV106 Sibir Refrigerator 2-Way
	O	NA	NA	RV108 Sibir Refrigerator 2-Way ILO Sibir RV106
	NA	NA	S	Dometic 1303 AES Refrigerator
	NA	S	NA	Dometic 763 AES (24'-29')
\$725	O	NA	NA	Dometic 1303 AES ILO Sibir RV106
\$200	NA	O	NA	Dometic 1303 AES ILO 763 (24'-29')
	S	NA	NA	18" 4-Burner Range w/Top Pilot/Oven
	NA	S	NA	22" 4-Burner Range w/Top Pilot/Oven
\$274	NA	NA	O	22" 4-Burner Range w/Top Pilot/Oven ILO Hot Plate
	S	S	S	Range Hood w/Light & Fan
\$37	O	S	S	Bi-Fold Range Cover
\$459	O	O	NA	Microwave Oven
\$922	O	O	NA	Spacemaker Microwave Oven JVM-48
	NA	NA	S	Convection Microwave w/4 Burner Hot Plate
\$40	O	S	NA	Microwave Prep 16"H x 20"W
	S	S	S	Deep Dbl. Stainless Steel Sink

Retail Cost	KL	KA	LA	
	NA	NA	S	APPLIANCES (Con't)
	NA	S	NA	Single Handle Mixing Faucet w/Spray Hose
	S	NA	NA	Single Handle Mixing Faucet
	NA	NA	S	Dbl. Handle Mixing Faucet
	S	S	NA	Hardwood Sink Covers - 2
	S	S	S	Laminated Sink Cover - 1
	S	S	S	Large Lavatory Sink
	S	NA	NA	ABS Tub/Shower w/Curtain (except garden tub)
\$147	O	NA	NA	ABS Tub/Shower Surround (except garden tub)
\$351	O	S	S	Full Fiberglass Tub/Shower w/Door or Curtain
\$35	O	O	S	Clothes Rod in Tub/Shower (except garden tub)
	S	S	S	Decorative Lavatory Faucet
	S	S	S	Decorative Shower Faucet
\$195	O	NA	NA	6 Gal. Gas Water Heater
	NA	S	S	6 Gal. Gas Water Heater w/Elect. Ign. ILO Std.
\$149	O	NA	NA	10 Gal. Gas/Elect. Water Heater
\$70	O	O	S	10 Gal. Gas/Elect. Water Heater ILO Std.
\$44	O	O	S	Electronic Reigniter (for 10 gal. water heater)
\$147	O	O	O	Water Heater Bypass Kit
\$676	O	O	S	Water Purifier
\$410	NA	O	S	Ice Maker
\$105	O	O	S	Nutone Food Center (Blender & Mixer)
\$193	O	O	S	Portable Gas Grill
				Portable Vacuum System
				AWNINGS, DOORS, VENTS & WINDOWS
\$632	O	O	NA	Side Awning (A & E 8000)
	NA	NA	S	Side Awning (A & E 9000)
\$86	O	O	O	Center Support for Side Awning
\$204	NA	O	O	Exterior Window Shades (off door side)
	NA	S	S	26" Entrance Door w/Flush Latch & Dead Bolt Lock
	S	NA	NA	26" Entrance Door

MINI STANDARDS/OPTIONS

Retail Cost	KL	KA	LA	AWNINGS, DOORS, VENTS & WINDOWS (Con't)
	S	S	S	Grab Handle
\$40	O	NA	NA	Dead Bolt Lock (each)
\$31	O	O	S	Door Bell
	NA	NA	S	Wood Folding Door (where applic.)
	NA	S	NA	Woven Folding Door (where applic.)
	S	NA	NA	Vinyl Folding Door (where applic.)
	NA	S	S	Power Roof Vent in Bath Area w/Wall Switch
	S	NA	NA	Power Roof Vent in Bath Area
\$81	O	O	O	Power Roof Vent
\$50	O	O	O	Non-Power Roof Vent
	S	S	S	Radius Tinted Slider Safety Glass Windows (Hehr)
	S	S	S	30" x 48" Picture Window at Dinette
\$166	NA	O	NA	48" x 24" Picture Window - Radius Only (each)
\$198	NA	O	NA	48" x 36" Picture Window - Radius Only (each)
\$209	NA	O	NA	48" x 48" Picture Window - Radius Only (each)

CABINETS & FURNITURE

\$0	S	S	S	Twin or Double Bed
	S	S	S	Decorative Headboards (where applic.)
	S	S	S	Night Stand (1 for TB; 2 for DBL)
	S	S	S	Built-in Sofa Bed (see floor plan)
	S	S	S	Barrel Chair(s) (1 or 2 see floor plan)
	S	S	S	Snack Table btw. Barrel Chairs (where applic.)
\$59	O	S	S	Snack Tray on Engine Cover
	S	S	S	Free Standing Pedestal Table (see floor plan)
\$53	O	O	O	Dinette w/Flex-a-lator (see floor plan)
\$44	O	S	NA	Access Doors under Dinette
	NA	NA	S	Access Drawers or Doors under Dinette
\$40	O	O	O	Counter Top Extension (where applic.)
	S	NA	NA	Wood Grain Cabinetry w/Complimentary Scroll
	NA	S	S	Oak Cabinetry w/Raised Panel Doors
\$1,476	NA	NA	O	Walnut Cabinetry w/Raised Panel Doors
	S	S	S	Pull-out Pantry (see floor plan)
	NA	S	S	Silverware Drawer
	S	S	S	Medicine Cabinet
	S	S	S	Towel Ring, Soap Dish & Tissue Holder
\$44	O	S	S	Towel Rack in Bath Area

ELECTRICAL & LIGHTING EQUIPMENT

\$301	S	S	S	AM/FM Stereo w/Cass., 4 Speakers (except CB Models)
\$88	O	S	S	Clock for AM/FM Stereo
\$20	O	O	O	Shut-off Switch for Bedroom Speakers
\$31	S	S	S	Radio Antenna
\$248	O	O	S	CB Radio w/Antenna
\$42	O	S	NA	Battery Clock
\$632	O	O	S	Color TV AC/DC
\$198	O	S	S	TV Antenna w/2 Jacks
\$81	O	O	S	Hook-up for Cable TV
	S	NA	NA	Incandescent 12 Volt Lighting
	NA	S	S	Fluorescent 12 Volt Lighting
	NA	NA	S	Polished Brass/Crystal Block Ceiling Fixture
	NA	S	S	Automatic Wardrobe Lights
\$59	O	O	S	Interior Courtesy Lights
	S	S	S	Porch Light w/Inside Switch
\$72	O	O	O	Exterior Security Lights (2)
\$47	O	O	O	Wire for Telephone
	NA	NA	S	Super Deluxe Monitor Panel w/Clock
\$191	O	S	NA	Deluxe Monitor Panel
	S	S	S	Smoke Detector
	S	S	NA	Fire Extinguisher 5 BC
	NA	NA	S	Fire Extinguisher 10 BC
\$11	O	O	NA	Fire Extinguisher 10 BC ILO 5 BC
	S	S	S	Single Automatic Electric Step
\$2,508	O	O	S	4.0 kw Gen. w/1 Remote Sw. & Auto Changeover (Onan)
\$2,035	O	O	NA	2.5 kw LP Gen. w/1 Remote Sw. & Auto Changeover (Kohler)
\$412	O	O	O	LP Gas Conversion for Gen. (except Emerald)
\$130	O	S	S	Gen. Prep (auto changeover, wire & door)
	S	S	S	1 - 110v GFI Interior Recept.
	S	S	S	Exterior Recept.
	S	S	S	Automotive Battery
	S	S	NA	1 - 80 AMP Battery
\$26	O	O	NA	1 - 80 AMP Deep Cycle Bat. ILO Std. (Sears Die Hard)
	NA	NA	S	1 - 80 AMP Deep Cycle Bat. (Sears Die Hard)
\$145	O	O	O	2 - 80 AMP Deep Cycle Bat. ILO Std. (Sears Die Hard)
	S	S	S	Battery Isolator
	NA	S	S	Slide Out Battery Box
	S	S	S	40 AMP Converter w/Charger
	S	S	S	30 AMP Service
\$173	O	O	O	50 AMP Service

INTERIORS

S	S	S	Carpet w/Pad Throughout
---	---	---	-------------------------

Retail Cost	KL	KA	LA	INTERIORS (Con't)
	NA	NA	S	Oak Hardwood Paneling
	NA	S	NA	Vinyl/Clad Oak Paneling
	S	NA	NA	Vinyl/Clad Pecan Paneling
\$0	S	S	S	Wood Grain Paneling Throughout
	S	S	S	Decorative Paneling in Bath
	S	S	S	Cushioned Entrance Door Header
	NA	S	S	Woven Soft Touch Ceiling
	S	NA	NA	Vinyl/Clad Ceiling
	NA	S	S	Decorative Etched Glass Doors
	NA	S	NA	Soft Shade Blinds w/Tie Back Drapes/Val. (liv. area)
	NA	S	NA	Coord. Roller Shades w/Tie Back Drapes/Val. (bedroom)
	S	NA	NA	Textured Roller Shades w/Tie Back Drapes/Val.
\$122	NA	O	S	Woven Wood Shades w/Tie Back Drapes/Val.
	S	S	S	Mini Blinds Kitchen/Bath Windows
	NA	NA	S	Queen/Dbl./Twin Quilted Bedspread(s) w/Matching Shams
\$136	NA	O	NA	Queen/Dbl./Twin Quilted Bedspread(s) w/Rev. Sham
\$83	O	NA	NA	Queen/Dbl./Twin Quilted Bedspread(s)
	S	S	NA	Wood Framed Decorative Mirror
	NA	NA	S	Original Oil Painting

WATER SYSTEMS

\$40	O	S	S	Air Accumulator Tank
	S	S	S	Demand Water System and 5/8" Water Lines
	S	S	S	City Water Hook-Up
	S	S	S	48 Gal. Water Cap.
	S	S	S	25 Gal. Sewage Holding Tank
	S	S	S	25 Gal. Gray Water

EXTERIOR

\$29	NA	S	S	Fiberglass Front & Rear Caps
\$16	NA	S	S	Fiberglass Sides (per foot)
	NA	O	S	Fiberglass Roof (per foot)
	S	S	S	Exterior Mirrors
	NA	S	S	Polished Auto Style Rear Bumper
	S	S	S	Polished Auto Style Front Bumper
\$44	O	NA	NA	Aluminum Bumper Cover
\$185	O	O	S	Running Boards
\$285	O	O	O	Hitch for Towing Car w/Wire Connector
\$226	O	S	S	Ext. Storage Slide Out Drawer 29"
	S	NA	NA	Ext. Storage Compartment (1)
\$66	O	O	NA	Storage Compartment under Bed w/Exterior Door (see floor plan)
\$146	O	O	S	Roof Rack & Ladder
\$384	O	O	O	Roof Storage Pod 21 cu. ft.
\$246	O	O	O	Roof Storage Pod 10 cu. ft.

RUNNING GEAR & CONSTRUCTION

\$79	O	NA	NA	Aluminum Structure (16" centers)
\$46	O	S	S	Fome-Cor Insulation Exterior Sidewalls
	S	S	S	Fome-Cor Insulation Exterior Roof
\$90	O	S	S	Fiberglass Insul. in Sidewalls, Roof & Floor - R5
	S	S	S	Additional R5 Fiberglass Insul. in Roof & Floor
	S	S	S	Laminated 5/8" Foam Insul. Sidewalls & Ceiling
	S	S	S	1" Laminated Plywood Floor
	S	S	S	Shock Absorbers (22' -37')
	S	S	S	Mor-Ryde Suspension (where applic.)
	NA	NA	S	Radial Tires
\$439	O	O	NA	Radial Tires (set of 6)
\$553	O	O	NA	Radial Tires (set of 8)
	S	S	S	Radial Tires - Ford Chassis
	S	S	NA	Polyester Tires - Chevy Chassis
	S	S	S	Decorative Deluxe Wheel Covers
	NA	S	S	Spare Tire, Wheel, in Slide Out Tray
\$476	O	NA	NA	Spare Tire, Wheel & Cover
\$42	O	NA	NA	Spare Tire Carrier
\$80	O	S	S	Mud Flaps (front & rear)
\$31	O	S	S	Hydraulic Jack - 6 Ton
\$3,325	O	O	O	Hydraulic Leveling Jacks
\$3,973	NA	O	O	Automatic Hydraulic Leveling Jacks
\$172	O	O	O	Helper Springs (24"-26") Mandatory KA & LA

CHASSIS FEATURES

\$494	O	O	O	Automatic Transmission
	S	S	S	Power Steering
	S	S	S	Power Brakes
	S	S	S	Cruise Control
	S	S	S	Tilt Steering Wheel
	S	S	S	High Output Auto. Heater/Air Conditioner
	S	S	S	41 Gal. Gasoline Fuel Capacity (Ford)
	S	S	S	36 Gal. Gasoline Fuel Capacity (Chevy)
	O	O	O	California Emissions System

MISCELLANEOUS

\$665	O	O	O	Customer Pick Up
-------	---	---	---	------------------

Class A Motor Homes

Take them anywhere!

Inviting, liveable road homes you'll be proud to take anywhere. These Class As are already "dressed up" with standard amenities like textured panelling in the bedroom, decorative panelling in the bath, padded carpeting throughout, a picture window at the dinette and an am/fm stereo cassette with four speakers.

The driver will appreciate the six-way power seat and the driver's side door which is standard on Kountry Aire and London Aire.

And your passengers will enjoy that extra touch of class that comes from your selection of the optional walnut cabinetry (new in London Aire for '86), central air conditioning (also new for '86), color television, microwave oven, Nutone Food Center and gas grill.

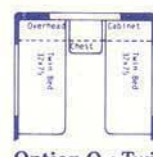
No doubt about it, from the specially chosen decorator fabrics to those options that let you personalize your "home," these motorhomes are in a "class" by themselves!



Option A



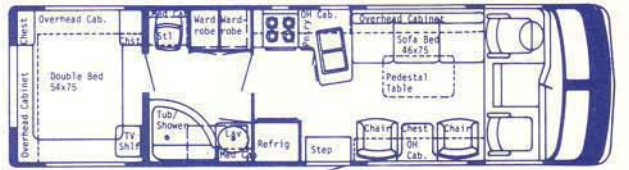
Option B



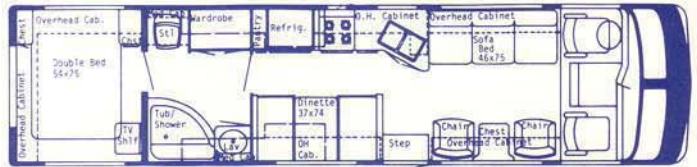
Option O • Twin Beds (Motorized)



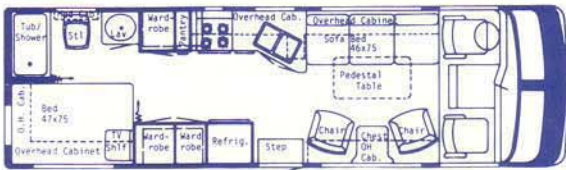
Option ST
Optional Bathroom



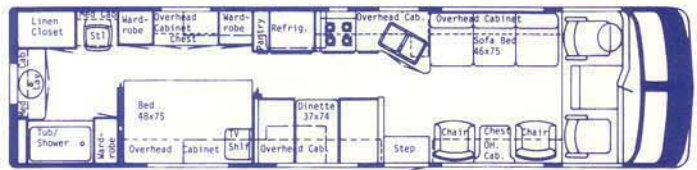
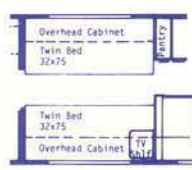
30' Walk Thru Center Bath • Available Options A, B, O, ST KL, KA, LA



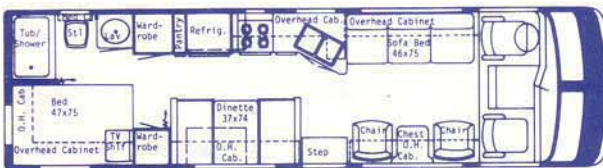
33' Walk Thru Center Bath Dinette • Available Options O, ST KL, KA, LA



28' Side Bath • Available Options A, B KL, KA, LA



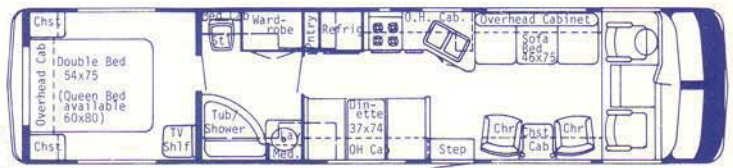
33' Rear Bath Dinette KL, KA, LA



29' Side Bath Dinette KL, KA, LA



Option ST7
Optional Bathroom



37' Walk Thru Center Bath Dinette • Available Options O, ST7 KL, KA, LA

CLASS A STANDARDS/OPTIONS

Retail Cost	KL	KA	LA	HEATING, AIR CONDITIONING & GAS
	S	S	S	Electronic Ignit. Furnace 32M (25'-30')
	S	S	S	Electronic Ignit. Furnace 35M (31'-35')
	S	S	S	Electronic Ignit. Furnace 41M (36'-40')
\$29	O	O	O	Next Size Larger Furnace ILO of Std.
\$230	O	O	O	Auxiliary Heater in Bedroom
	S	S	S	Under Floor Ducted Heat
\$861	NA	S	S	13.5 Central Air Cond. (1)
\$795	NA	O	O	Extra 13.5 Central Air Cond. w/Wiring
\$795	O	O	NA	13.5 Reg. Air Cond.
\$56	O	O	NA	Heat Strip for Reg. Air Cond.
\$0	NA	O	O	13.5 Reg. Air Cond. w/Heat Strip ILO Central
	S	NA	NA	Wire for Reg. Air Cond.
\$56	O	O	O	Wire for Extra Reg. Air Cond.
\$156	O	O	S	Defroster Fans
	S	NA	NA	15 Gal. LP Gas Tank
\$428	O	S	S	64 Gal. LP Gas Tank
\$493	O	S	S	Dual Fuel Conversion - Ex. CA
\$55	O	O	S	LP Leak Detector

Retail Cost	KL	KA	LA	APPLIANCES
\$219	S	NA	NA	RV106 Sibir Refrigerator 2-Way
	O	NA	NA	RV108 Sibir Refrigerator 2-Way ILO Sibir RV106
	NA	NA	S	Dometic 1303 AES Refrigerator
	NA	S	NA	Dometic 1303 AES Refrigerator (30'-40')
	NA	S	NA	Dometic 763 AES (24'-29')
\$725	O	NA	NA	Dometic 1303 AES ILO Sibir RV106
\$200	NA	O	NA	Dometic 1303 AES ILO 763 (24'-29')
	S	NA	NA	18" 4-Burner Range w/Top Pilot/Oven
	NA	S	NA	22" 4-Burner Range w/Top Pilot/Oven
\$274	NA	NA	O	22" 4-Burner Range w/Top Pilot/Oven ILO Hot Plate
	S	S	S	Range Hood w/Light & Fan
\$37	O	S	S	Bi-Fold Range Cover
\$459	O	S	NA	Microwave Oven
\$922	O	NA	NA	Spacemaker Microwave Oven JVM-48
\$463	NA	O	NA	Spacemaker Microwave Oven JVM-48 ILO Std.
	NA	NA	S	Convection Microwave w/4 Burner Hot Plate
\$40	O	NA	NA	Microwave Prep 16" H x 20" W
	S	S	S	Deep Dbl. Stainless Steel Sink
	NA	NA	S	Single Handle Mixing Faucet w/Spray Hose
	NA	S	NA	Single Handle Mixing Faucet
	S	NA	NA	Dbl. Handle Mixing Faucet

Retail Cost	KL	KA	LA	APPLIANCES (Con't)
	NA	NA	S	Hardwood Sink Covers - 2
	S	S	NA	Laminated Sink Cover - 1
	S	S	S	Large Lavatory Sink
	S	NA	NA	ABS Tub/Shower w/Curtain (except garden tub)
\$147	O	NA	NA	ABS Tub/Shower Surround (except garden tub)
\$351	O	S	S	Full Fiberglass Tub/Shower w/Door or Curtain
\$35	O	O	S	Clothes Rod in Tub/Shower (except garden tub)
	S	S	S	Decorative Lavatory Faucet
	S	S	S	Decorative Shower Faucet
	S	NA	NA	6 Gal. Gas Water Heater
\$195	O	NA	NA	6 Gal. Gas Water Heater w/Elect. Ign. ILO Std.
	NA	S	S	10 Gal. Gas/Elect. Water Heater
\$149	O	NA	NA	10 Gal. Gas/Elect. Water Heater ILO Std.
\$70	O	O	S	Electronic Reignitor (for 10 gal. water heater)
\$44	O	O	S	Water Heater Bypass Kit
\$147	O	O	O	Water Purifier
\$676	O	O	S	Ice Maker
\$410	NA	O	S	Nutone Food Center (Blender & Mixer)
\$105	O	O	S	Portable Gas Grill
\$193	O	O	S	Portable Vacuum System

Retail Cost	KL	KA	LA	AWNINGS, DOORS, VENTS & WINDOWS
\$632	O	O	NA	Side Awning (A & E 8000)
	NA	NA	S	Side Awning (A & E 9000)
\$86	O	O	O	Center Support for Side Awning
\$204	NA	O	O	Exterior Window Shades (off door side)
\$545	O	S	S	Driver Side Door
	NA	S	S	26" Entrance Door w/Flush Latch & Dead Bolt Lock
	S	NA	NA	26" Entrance Door
	S	S	S	Grab Handle
\$40	O	O	O	Dead Bolt Lock (each)
\$31	O	O	S	Door Bell
	NA	NA	S	Wood Folding Door (where applic.)
	NA	S	NA	Woven Folding Door (where applic.)
	S	NA	NA	Vinyl Folding Door (where applic.)
	NA	S	S	Power Roof Vent in Bath Area w/Wall Switch
	S	NA	NA	Power Roof Vent in Bath Area
\$81	O	O	O	Power Roof Vent
\$50	O	O	O	Non-Power Roof Vent
	S	S	S	Rad. Tinted Slider Safety Glass Windows (Hehr)
	S	S	S	30" x 48" Picture Window at Dinette

CLASS A STANDARDS/OPTIONS

Retail Cost	KL	KA	LA	AWNINGS, DOORS, VENTS & WINDOWS (Con't)
\$166	NA	O	NA	48" x 24" Picture Window - Radius Only (each)
\$198	NA	O	NA	48" x 36" Picture Window - Radius Only (each)
\$209	NA	O	NA	48" x 48" Picture Window - Radius Only (each)

CABINETS & FURNITURE

\$0	S	S	S	Twin or Double Bed
\$60	O	O	O	Queen Bed (where applic.)
	S	S	S	Decorative Headboards (where applic.)
	S	S	S	Night Stand (1 for TB; 2 for DBL)
	S	S	S	Built in Sofa Bed (see floor plan)
	S	S	S	Barrel Chair(s) (1 or 2 see floor plan)
	S	S	S	Snack Table btw. Barrel Chairs (where applic.)
\$88	O	S	S	Snack Tray on Engine Cover
	S	S	S	Free Standing Pedestal Table (see floor plan)
\$53	S	S	S	Dinette w/Flex-a-lator (see floor plan)
\$44	O	S	NA	Access Doors under Dinette
	NA	NA	S	Access Drawers or Doors under Dinette
\$40	O	O	O	Counter Top Extension (where applic.)
	S	NA	NA	Wood Grain Cabinetry w/Complimentary Scroll
	NA	S	S	Oak Cabinetry w/Raised Panel Doors
\$1,476	NA	NA	O	Walnut Cabinetry w/Raised Panel Doors
	S	S	S	Pull-out Pantry (see floor plan)
	NA	S	S	Silverware Drawer
	S	S	S	Medicine Cabinet
	S	S	S	Towel Ring, Soap Dish & Tissue Holder
\$44	O	S	S	Towel Rack in Bath Area

ELECTRICAL & LIGHTING EQUIPMENT

\$320	S	S	NA	AM/FM Stereo w/Cass. 6 Speakers (CB Models)
\$301	S	S	S	AM/FM Stereo w/Cass. 4 Speakers (except CB Models)
	NA	NA	S	AM/FM Stereo w/Cass. 2 Speakers
\$88	O	S	S	Clock for AM/FM Stereo
\$20	O	O	NA	Shut-off Switch for Bedroom Speakers
\$31	S	S	S	Radio Antenna
\$248	O	O	S	CB Radio w/Antenna
\$112	O	O	S	Headphone
\$42	O	S	NA	Battery Clock
\$632	O	S	S	Built-in Color TV AC/DC
\$632	O	O	S	Color TV AC/DC
\$59	O	S	S	TV Shelf & Remote Wall Switch (bedroom)
\$198	O	S	S	TV Antenna w/2 Jacks
\$81	O	O	S	Hook up for Cable TV
\$1,843	O	O	S	Closed Circuit Rear View Monitor
	S	NA	NA	Incandescent 12 Volt Lighting
	NA	S	S	Fluorescent 12 Volt Lighting
	NA	NA	S	Polished Brass/Crystal Block Ceiling Fixture
	NA	S	S	Automatic Wardrobe Lights
\$59	O	S	S	Interior Courtesy Lights
	S	S	S	Porch Light w/Inside Switch
\$72	O	O	O	Exterior Security Lights (2)
\$274	O	S	S	Remote Controlled Roof Spot Light
\$22	O	S	S	Service Light under Hood
\$47	O	O	O	Wire for Telephone
	NA	NA	S	Super Deluxe Monitor Panel w/Clock
\$191	O	S	NA	Deluxe Monitor Panel
\$121	O	S	S	Air Horns
	S	S	S	Smoke Detector
	S	S	NA	Fire Extinguisher 5 BC
	NA	NA	S	Fire Extinguisher 10 BC
\$11	O	O	NA	Fire Extinguisher 10 BC ILO 5 BC
\$483	O	S	S	6-way Power Driver Seat (Recliner)
\$483	O	O	O	6-way Power Passenger Seat (Recliner)
	S	NA	NA	Single Automatic Electric Step
\$200	O	S	S	Double Automatic Electric Step
\$3,259	O	S	NA	7.0 kw Gen. w/2 Remote Sw & Auto Changeover (Kohler) (33'-37')
\$678	NA	O	NA	6.5 kw Gen. Onan ILO Kohler
\$3,937	O	NA	S	6.5 kw Gen. w/2 Remote Sw & Auto Changeover (Onan) (33'-37')
\$2,508	O	NA	NA	4.0 kw Gen. w/1 Remote Sw & Auto Changeover (Onan)
	NA	S	S	4.0 kw Gen. w/1 Remote Sw & Auto Changeover (Onan) (28'-30')
\$412	O	O	O	LP Gas Conversion for Gen. (except Emerald)
\$130	S	NA	NA	Gen. Prep (auto changeover, wire & door)
\$65	O	S	S	Auxiliary Start Switch
\$1,729	O	O	S	12v Inverter for Ice maker & 1 Recept w/105 AMP Alt.
	S	S	S	1 - 110v GFI Interior Recept
	S	S	S	Exterior Recept
	S	S	S	Automotive Battery
	S	NA	NA	1-80 AMP Battery
\$26	O	NA	NA	1-80 AMP Deep Cycle Bat. ILO Std. (Sears Die Hard)
	NA	S	NA	1-80 AMP Deep Cycle Bat. (Sears Die Hard)
	NA	NA	S	2-80 AMP Deep Cycle Bat. (Sears Die Hard)
\$145	O	O	NA	2-80 AMP Deep Cycle Bat. ILO Std. (Sears Die Hard)
	S	S	S	Battery Isolator
	NA	S	S	Slide Out Battery Box
	S	S	S	40 AMP Converter w/Charger
	S	S	S	30 AMP Service
\$173	O	O	O	50 AMP Service

INTERIORS

S	S	S	Carpet w/Pad Throughout
---	---	---	-------------------------

Retail Cost	KL	KA	LA	INTERIORS (Con't)
	NA	NA	S	Oak Hardwood Paneling
	NA	S	NA	Vinyl/Clad Oak Paneling
	S	NA	NA	Vinyl/Clad Pecan Paneling
\$66	O	O	NA	Wainscoting in Living Room
\$0	O	O	O	Wood Grain Paneling Throughout
	S	S	S	Light Colored Textured Paneling in Bedroom
	S	S	S	Decorative Paneling in Bath
	S	S	S	Cushioned Entrance Door Header
	NA	S	S	Woven Soft Touch Ceiling
	S	NA	NA	Vinyl/Clad Ceiling
	NA	S	S	Decorative Etched Glass Doors
	NA	S	NA	Soft Shade Blinds w/Tie Back Drapes/Val. (liv. area)
	NA	S	NA	Coord. Roller Shades w/Tie Back Drapes/Val. (bedroom)
\$122	NA	O	S	Textured Roller Shades w/Tie Back Drapes/Val.
	S	S	S	Woven Wood Shades w/Tie Back Drapes/Val.
	NA	S	S	Mini Blinds Kitchen/Bath Windows
\$136	NA	O	NA	Queen/Dbl./Twin Quilted Bedspread(s) w/Matching Shams
\$83	O	NA	NA	Queen/Dbl./Twin Quilted Bedspread(s) w/Rev. Sham
	S	S	NA	Wood Framed Decorative Mirror
	NA	NA	S	Original Oil Painting

WATER SYSTEMS

\$40	O	S	S	Air Accumulator Tank
	S	S	S	Demand Water System and 5/8" Water Lines
	S	S	S	City Water Hook-Up
	S	S	S	60 Gal. Water Cap.
	S	S	S	39 Gal. Sewage Holding Tank
	S	S	S	55 Gal. Sewage Holding Tank (33' CBD, 37' CBD)
	S	S	S	39 Gal. Gray Water

EXTERIOR

	NA	S	S	Fiberglass Front & Rear Caps
\$29	NA	S	S	Fiberglass Sides (per foot)
\$16	NA	O	S	Fiberglass Roof (per foot)
	NA	S	S	Exterior Mirrors w/Defrost
	S	NA	NA	Exterior Mirrors
	S	S	S	Polished Auto Style Rear Bumper
	S	S	S	Polished Auto Style Front Bumper
\$285	O	O	S	Hitch for Towing Car w/Wire Connector
\$253	O	S	S	Ext. Storage Slide Out Drawer 48"
\$226	O	S	S	Ext. Storage Slide Out Drawer 29"
\$226	O	O	S	Extra Ext. Storage Slide Out Drawer 29"
	S	NA	NA	Ext. Storage Compartment (1)
\$66	O	O	NA	Storage Compartment under Bed w/Exterior Door (see floor plan)
\$146	O	O	S	Roof Rack & Ladder
\$384	O	O	O	Roof Storage Pod 21 cu. ft.
\$246	O	O	O	Roof Storage Pod 10 cu. ft.
\$456	NA	O	S	Automatic Rewind Elect. Cord
\$228	NA	O	S	Automatic Rewind Water Hose

RUNNING GEAR & CONSTRUCTION

	S	S	S	Aluminum Structure (16" centers)
\$79	O	NA	NA	Fome-Cor Insulation Exterior Sidewalls
\$46	O	S	S	Fome-Cor Insulation Exterior Roof
	S	S	S	Fiberglass Insul. in Sidewalls, Roof & Floor - R5
\$90	O	S	S	Additional R5 Fiberglass Insul. in Roof & Floor
	S	S	S	Laminated 5/8" Foam Insul. Sidewalls & Ceiling
	S	S	S	1" Laminated Plywood Floor
\$60	S	S	S	Shock Absorbers (22'-37')
	S	S	S	Mor-Ryde Suspension (where applic.)
\$200	O	S	S	4-Way Shocks on Front
	NA	NA	S	Radial Tires
\$439	O	O	NA	Radial Tires (set of 6)
\$553	O	O	NA	Radial Tires (set of 8)
	S	S	NA	Polyester Tires
\$1,663	NA	O	S	Polished Aluminum Wheels - Set of 6
\$1,262	NA	O	S	Polished Aluminum Wheels - Set of 4
\$854	O	S	NA	Deluxe Chrome Wheel Covers - Set of 6
\$755	O	S	NA	Deluxe Chrome Wheel Covers - Set of 4
	S	NA	NA	Decorative Deluxe Wheel Covers
\$509	O	S	S	Spare Tire, Wheel, in Slide Out Tray
\$80	O	S	S	Mud Flaps (front & rear)
\$31	O	S	S	Hydraulic Jack - 6 Ton
\$3,325	O	S	NA	Hydraulic Leveling Jacks
\$3,973	NA	O	S	Automatic Hydraulic Leveling Jacks

CHASSIS FEATURES

	S	S	S	Automatic Transmission
	S	S	S	Power Steering
	S	S	S	Power Brakes
	S	S	S	Cruise Control
	S	S	S	Tilt Steering Wheel
\$180	O	O	S	Custom Steering Wheel
	S	S	S	High Output Auto. Heater/Air Conditioner
	S	S	S	78 Gal. Gasoline Fuel Capacity
\$494	O	O	O	California Emissions System

MISCELLANEOUS

\$665	O	O	O	Customer Pick Up
-------	---	---	---	------------------

1986 TRAVEL TRAILER WEIGHTS

KOUNTRY LITE

Model	Approximate Axle Weight	Approximate Hitch Weight	GVWR
22 RBD	3450	500	5500
25 CB	3800	650	5900
27 CB	4050	650	6100
29 CBD	4300	700	6400
29 FKD	4100	900	6400
31 FKD	4550	900	7000
31 CBD	4750	700	7000
33 CBD	4850	750	7500
33 RBD	4850	750	7500
35 CBD	4950	750	7500

KOUNTRY AIRE

Model	Approximate Axle Weight	Approximate Hitch Weight	GVWR
25 CB	5000	650	6800
27 CB	5250	650	7200
29 CBD	5500	700	7500
31 CBD	5900	700	8000
33 CBD	6000	800	8500
33 RBD	6000	800	8500
35 CBD	6100	800	8500

LONDON AIRE

Model	Approximate Axle Weight	Approximate Hitch Weight	GVWR
31 CBD	6250	750	8000
33 CBD	6700	800	8900
33 RBD	6700	800	8900
35 CBD	7000	800	8900

1986 FIFTH WHEEL WEIGHTS

KOUNTRY LITE

Model	Approximate Axle Weight	Approximate Hitch Weight	GVWR
24 WRF	4200	1000	6100
26 WRF	4500	1000	6400
29 WRFD	4800	1200	7500
29 WRKD	4800	1200	7500
32 WRF	5000	1500	7900
32 WRFD	5000	1500	7900
35 WRF	5500	1400	8100
35 WD	5500	1400	8100
35 WRKD	5500	1400	8100
35 WRFD	5500	1400	8100
35 FBD	5500	1400	8100
35 RBD	5500	1400	8100
40 WCB	6400	1400	10000
40 WD	6400	1400	10000
40 WRKD	6400	1400	10000
40 WRFD	6400	1400	10000
40 WRF	6400	1400	10000
40 RBD	6400	1400	10000

KOUNTRY AIRE

Model	Approximate Axle Weight	Approximate Hitch Weight	GVWR
29 WRFD	6000	1200	8500
29 WRKD	6000	1200	8500
32 WRF	6200	1500	9000
32 WRFD	6200	1500	9000
35 WRF	6700	1400	10200
35 WD	6700	1400	10200
35 WRKD	6700	1400	10200
35 WRFD	6700	1400	10200
35 FBD	6700	1400	10200
35 RBD	6700	1400	10200
40 WCB	7600	1400	12000
40 WD	7600	1400	12000
40 WRKD	7600	1400	12000
40 WRFD	7600	1400	12000
40 WRF	7600	1400	12000
40 RBD	7600	1400	12000

1986 FIFTH WHEEL WEIGHTS

LONDON AIRE

Model	Approximate Axle Weight	Approximate Hitch Weight	GVWR
32 WRFD	6000	1500	9000
35 WRFD	7300	1500	10200
35 FBD	7300	1500	10200
35 RBD	7300	1500	10200
40 WRFD	8300	1500	12000
40 WRF	8300	1500	12000
40 RBD	8300	1500	12000

1986 MINI HOME WEIGHTS

KOUNTRY LITE

Model	GAWR Front	GAWR Rear	GAWR Tag
24 RB	4000	7370	
26 RB	4000	7370	
26 SB	4000	7370	
26 RBD	4000	7370	
28 WCB	4000	7370	3000

KOUNTRY AIRE

Model	GAWR Front	GAWR Rear	GAWR Tag
24 RB	4000	7370	
26 RB	4000	7370	
26 SB	4000	7370	
26 RBD	4000	7370	
28 WCB	4000	7370	3000

LONDON AIRE

Model	GAWR Front	GAWR Rear	GAWR Tag
24 RB	4000	7370	
26 RB	4000	7370	
26 SB	4000	7370	
26 RBD	4000	7370	
28 WCB	4000	7370	3000

1986 CLASS A MOTOR HOME WEIGHTS

KOUNTRY LITE

Model	GAWR Front	GAWR Rear	GAWR Tag
28 SB	5000	9840	
29 SBD	5000	9840	
30 WCB	5000	9840	
33 WCBD	5000	9840	3000
33 RBD	5000	9840	3000
37 WCBD	5000	9840	3000

KOUNTRY AIRE

Model	GAWR Front	GAWR Rear	GAWR Tag
28 SB	5000	9840	
29 SBD	5000	9840	
30 WCB	5000	9840	
33 WCBD	5000	9840	3000
33 RBD	5000	9840	3000
37 WCBD	5000	9840	3000

LONDON AIRE

Model	GAWR Front	GAWR Rear	GAWR Tag
28 SB	5000	9840	
29 SBD	5000	9840	
30 WCB	5000	9840	
33 WCBD	5000	9840	3000
33 RBD	5000	9840	3000
37 WCBD	5000	9840	3000

(Information contained in this brochure is presented as factually as possible and is current at time of printing. The manufacturer reserves the right at any time to make changes in product design or specifications at its sole option without notice. By the time you receive your copy, some information may have been updated. Please consult your dealer concerning optional extras and/or specification changes or corrections).

Newmar Corporation
P.O. Box 30
Nappanee, Indiana 46550
(219) 773-7791

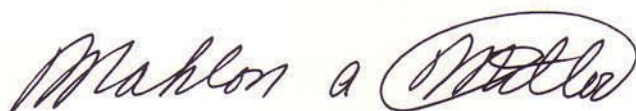
Editor's Note:

My personal thanks to each of you for your interest in Newmar Corporation. By the time you read this page, I hope it will be obvious to you the tremendous effort and dedication that has gone into bringing you this, our 1986 product line. I am proud, as I believe all of our people at Newmar are, to present these new vehicles. Each and every one is a confirmation of our commitment to continued excellence.

Even though it's difficult to imagine *what* you might want changed, we realize in some cases you may desire a special unit. So we've made customizing an available alternative in the hope that *you*, our customer, understand that we "aim to please".

After having read Kountry Style, Volume II, I hope that you will visit your nearest dealership and take a look at these exciting new vehicles. Naturally, they must be seen to be really appreciated. Once you've examined them, I believe our goal at Newmar will be clear to you: to produce fine recreational vehicles of honest worth through the principles and skills of American craftsmanship.

Newmar Corporation,

A handwritten signature in dark ink, reading "Mahlon A. Miller". The signature is fluid and cursive, with the first name "Mahlon" being larger and more prominent than the last name "Miller".

Mahlon A. Miller
President
Chairman of the Board

Be Our Guest!

Each year, hundreds of visitors from around the United States, and even some foreign countries, tour the Newmar facilities. We're proud of our community, our people, our home offices and especially proud of the coaches our craftsmen produce for the recreational vehicle industry.

Newmar Corporation is one of the most respected names in the RV business. The primary reason is quality. The quality that is engineered into every unit produced.

That quality begins here in Nappanee, Indiana.

Our facility is spread over 26 acres, and includes over 150,000 square feet of working space that includes executive offices, production facilities, engineering and drafting departments, IBM computer technology, research and development, and a large sales and customer service division.

Our artisans include some of the finest craftsmen in the country. And the result is some of the most beautiful and popular recreational vehicles in the world – Kountry Lite, Kountry Aire, and London Aire!

But, why not come visit us and see for yourself!



An aerial view of the Newmar facilities.

Newmar Corporation
P.O. Box 30
Nappanee, Indiana 46550
(219) 773-7791